

COLLAPSIBLE METAL DOG PLAYPEN/CRATE

PPCGMETLXLA & PPCGMETLMDA

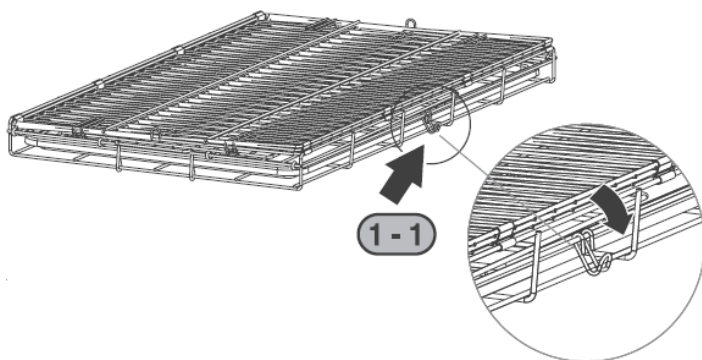
SAFETY & WARNINGS

Read these instructions carefully before use and keep them for future reference. Failure to follow this user guide may compromise the safety of your pet.

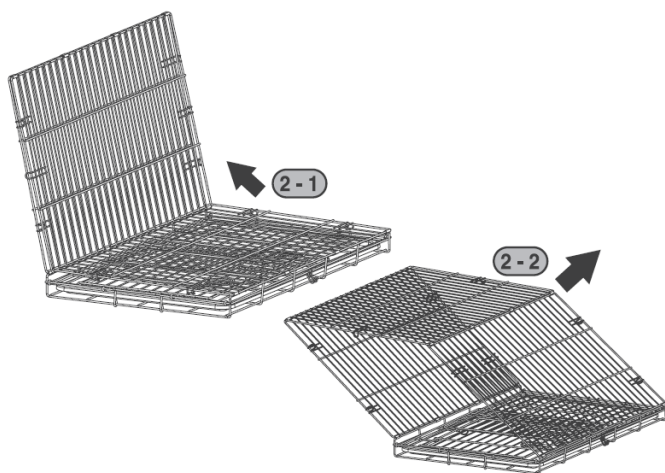
- For use with pets only.
- To avoid choking and other serious injuries, remove all collars, harnesses, and other items, such as pet clothing, before allowing the pet to enter the crate.
- This crate is not designed to restrain aggressive breeds of dogs.
- Never use a crate as a method of punishment.
- Pets should not be left unattended in the crate until and unless you are certain that the pet will respond properly to being left alone in the crate.
- Pet should always have access to food and water while in crate.
- Do not place any other items, such as toys, in the crate unless your veterinarian or trainer advises you that it is safe to do so.
- Do not allow more than one pet in the crate at a time.
- Do not allow children to play in, on or around the crate.
- Keep the crate door closed around children to avoid the hazard of protruding hinge or latch pins.
- If any structural component is discovered to be broken or missing, stop use of the crate immediately.

ASSEMBLY

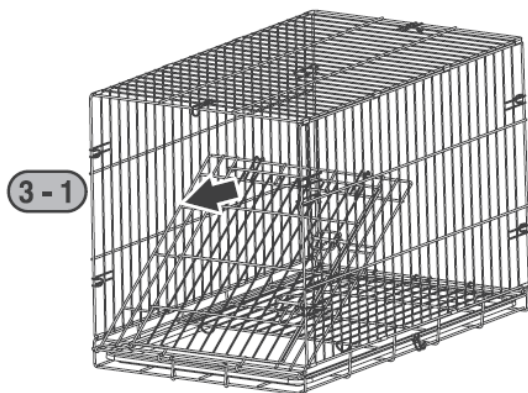
Step 1



Step 2



Step 3



Note:

A forceful pull will allow the hooks to snap into place.

Step 4



Note:

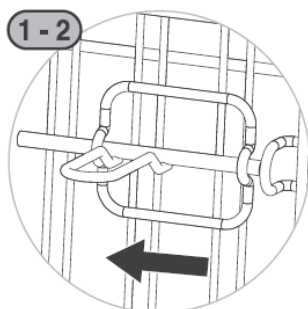
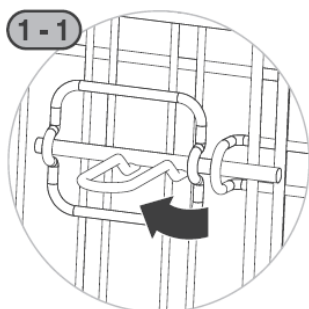
For cleaning purposes, the bottom tray is removeable.

Disassembly

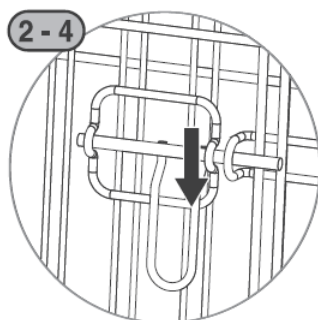
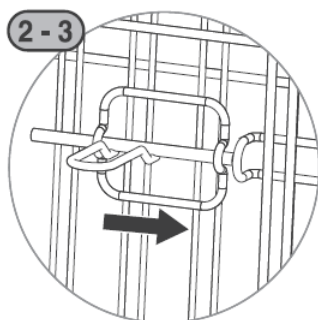
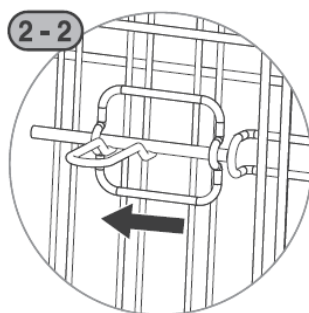
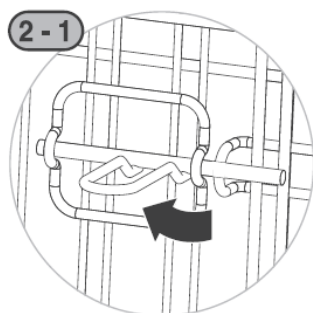
- 1.** Unhook the 7 hooks located around the edges of the door panel by pushing the panel into the crate.
- 2.** Repeat Step 1 on the other side of the crate.
- 3.** Allow the panels to all collapse flat. Fold the panels, like turning the page of a book.
- 4.** Hook the latch on the side of the crate to lock all the panels together.

OPERATION

Opening the Door



Closing the Door



CLEANING & CARE

- Periodically check the crate for signs of damage, wear, or missing components.
- Do not use if any part is missing, worn or damaged.
- Do not use abrasive cleaners or bleach to clean your crate.
- Clean by sponging with warm water and a mild detergent.
- Wipe it dry immediately after cleaning to avoid formation of rust.

SPECIFICATIONS

	Dog Crate (L x W x H)	Pet Pad (L x W x H)
Medium	76 x 48 x 55 cm	69 x 43 x 5 cm
Extra Large	107 x 71 x 77 cm	99 x 66 x 5 cm

Need more information?

We hope that this user guide has given you the assistance needed for a simple set-up.

For the most up-to-date guide for your product, as well as any additional assistance you may require, head online to **help.kogan.com**

kogan.com