

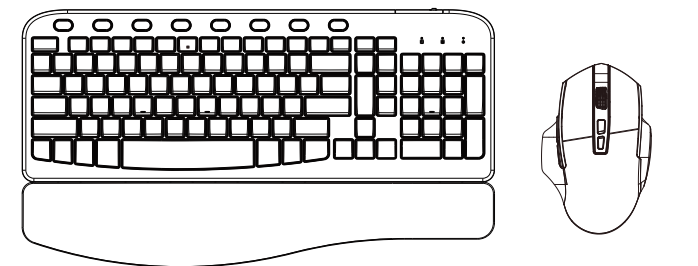
尺寸：105x148mm

材质：100g书纸

工艺：双面四色印刷 折页

Wireless Keyboard

2.4G Wireless Keyboard and Mouse Combo



Email: sabluteservice@outlook.com
sablute.com/pages/contact

Product Specification

Keyboard parameters:

Connectivity	2.4G Wireless Connection
Charging time of Keyboard	6h
Battery capacity	2000mAh
Battery endurance	20h (with backlight)
Operating voltage	3.7V
Connection distance	8~10m
Power Saving	Without action in 90 seconds, the backlight will be out on keyboard

Mouse parameters:

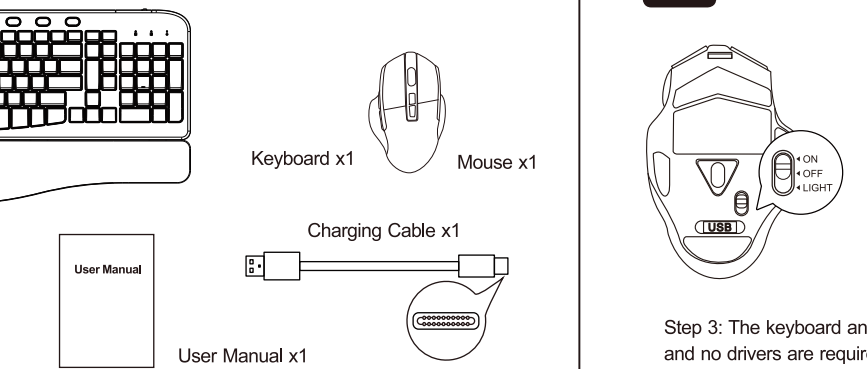
Mouse Battery Capacity	650mAh
Mouse DPI	800-1200-1600-2000
Charging Time of Mouse	3 hours
Working Current(with Backlight)	17 mA
Working Time(with Backlight)	30 hours
Connection Distance	10m
Power Saving	Without action in 90 seconds

Compatible Systems: Windows XP, Windows 7/8/10/11, Mac OS
iPad OS, IOS, Android

Note

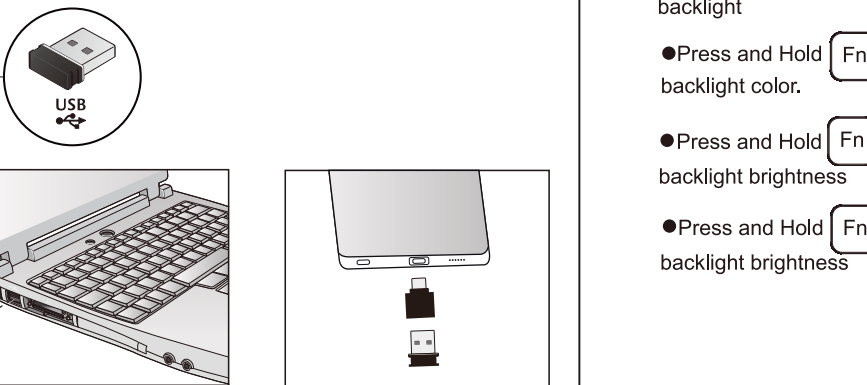
1. Compatible Systems: All Windows Series, Mac OS, Linux, Chrome OS
2. The multimedia keys are for Win 8 and Win 10, for other systems, there may be no function for some combined keys.

You will receive



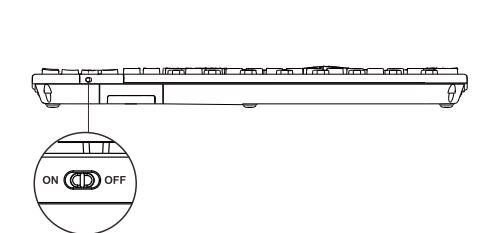
How to set up

- 1 Step 1: Please put the USB receiver into your computer.
If your device includes Type-C port, you can also use the Adapter.



2

Step 2: Turn on the keyboard and mouse.

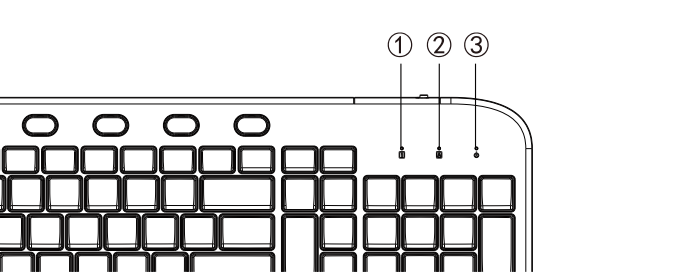


Step 3: The keyboard and mouse will connect to the computer automatically, and no drivers are required.

Instruction of the keyboard backlight

- Press and Hold **Fn** key , then press **Del** key to turn on/ turn off backlight
- Press and Hold **Fn** key, then press **Ins** key to change backlight color.
- Press and Hold **Fn** key ,then press **↑** key to increase backlight brightness
- Press and Hold **Fn** key ,then press **↓** key to decrease backlight brightness

LED indicators description

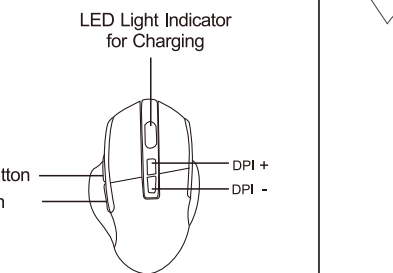


LED Indicator of the Keyboard

- ① **NUM LOCK**
The Num Lock LED light will turn green when Num Lock function is activated.
- ② **CAPS LOCK**
The Caps Lock LED light will turn green when Caps Lock function is activated.
- ③ **Charging Indicator**
When the battery is running down, the green LED light will flash. When charging, the red light will turn on. When fully charged, the red light will turn off.

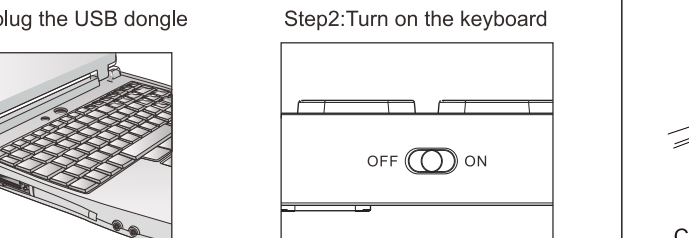
LED Indicator of the Mouse

Charging: the LED red light will turn on.
Fully Charged: the LED red light will turn off.
When the battery is running down, please charge the mouse to make sure it works properly.

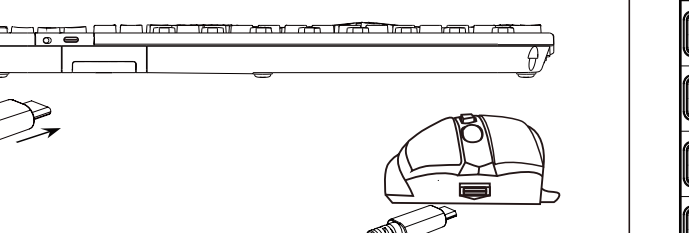


How to repair the keyboard to the USB receiver

(The keyboard and mouse share a USB receiver.)



Instruction for charging



Charging Troubleshooting
1.If the charging indicator light is not on:
A: Check if the charging power source is properly connected.
B: Inspect the charging port for any looseness.
C: Verify if the charging output voltage is at 4.2V.
2.If the charging indicator light is on but the device is not operational:
A: Generally, it may need around half an hour of charging. Please ensure that the charging time is sufficient.
B: Check if the USB receiver is connected to the keyboard.
If not, please reconnect it.

Multimedia button description

The functions down below can be realized by combining FN button.

Calculator	Screenshot	Previous song
Play/pause	Next song	Mute
Volume-	Volume•	Light color adjustment
Increase Brightness	Decrease Brightness	Backlight Switch

FAQ

Q1:What should I do if the keyboard gets delayed or stuck?
A1:

- 1 Please check there is no 2.4GHz device (e.g. router) nearby to interfere with the connection.
- 2 Please check the keyboard has been fully charged.
- 3 Please check there is no full metal case that may block the signal.

Q2: What should I do if the keyboard and mouse cannot be charged?

- A2:
- 1 Please check whether the charging port is connected. Please try to replace the charging cable.
 - 2 Try to change the USB port, and if the problem can not be solved, please feel free to contact us.

Q3: What should I do if the backlight stops working?
A3:

- 1 Please charge for half an hour and then re-insert the USB.
- 2 Please try to restart the keyboard and mouse.

Q4: Where is my USB receiver?
A4:

- 1 The USB receiver is placed on top of the keyboard inside the package, please look for it carefully.
- 2 Please contact us to get the free replacement if you have lost the USB receiver.

Q5: What should I do if the keyboard can not be connected?
A5:

- 1 Switch on the keyboard, press **Win** + **F12**, the light flashes quickly.
- 2 Plug the 2.4GHz USB receiver into the computer.
- 3 Within 10 seconds, put the keyboard at 10 cm from the receiver for pairing.
- 4 When the light turn off, the keyboard pairing is successful.

FAQ

Q1:What should I do if the keyboard gets delayed or stuck?
A1:

- 1 Please check there is no 2.4GHz device (e.g. router) nearby to interfere with the connection.
- 2 Please check the keyboard has been fully charged.
- 3 Please check there is no full metal case that may block the signal.

Q2: What should I do if the keyboard and mouse cannot be charged?

- A2:
- 1 Please check whether the charging port is connected. Please try to replace the charging cable.
 - 2 Try to change the USB port, and if the problem can not be solved, please feel free to contact us.

Q3: What should I do if the backlight stops working?
A3:

- 1 Please charge for half an hour and then re-insert the USB.
- 2 Please try to restart the keyboard and mouse.

Q4: Where is my USB receiver?
A4:

- 1 The USB receiver is placed on top of the keyboard inside the package, please look for it carefully.
- 2 Please contact us to get the free replacement if you have lost the USB receiver.

Q5: What should I do if the keyboard can not be connected?
A5:

- 1 Switch on the keyboard, press **Win** + **F12**, the light flashes quickly.
- 2 Plug the 2.4GHz USB receiver into the computer.
- 3 Within 10 seconds, put the keyboard at 10 cm from the receiver for pairing.
- 4 When the light turn off, the keyboard pairing is successful.

Cautions

- 1) Please fully charge the keyboard when you first receive the product as this helps to maintain the battery life.
- 2) Please remove the power supply when charging is complete.
- 3) If the keyboard is not used for a long time, it is recommended to turn off the power switch of the keyboard.
- 4) Please do not expose this product to water because it may cause short-circuit and damage the product.
- 5) Please do not drop or hit this product because shocks may damage the components inside.
- 6) Please do not place this product near the extreme heat or sources of fire.

FCC Statement

This equipment has been tested and found to comply with the limits for a Class B digital device, pursuant to part 15 of the FCC rules.

These limits are designed to protect reasonably against harmful interference in a residential installation. This equipment generates uses and can radiate radio frequency energy and, if not installed and used following the instructions, may cause harmful interference to radiocommunications. However, there is no guarantee that interference will not occur in a particular installation. If this equipment does cause harmful interference to radio or television reception, which can be determined by turning the equipment off and on, the user is encouraged to try to correct the interference by one or more of the following measures:

- (1) Reorient or relocate the receiving antenna.
- (2) Increase the separation between the equipment and receiver.
- (3) Connect the equipment to an outlet on a circuit different from that to which the receiver is connected.
- (4) Consult the dealer or an experienced radio/TV technician for help changes or modifications not expressly approved by the party responsible for compliance, which could void the user's authority to operate the equipment.

This device complies with Part 15 of the FCC Rules. Operation is subject to the following two conditions:

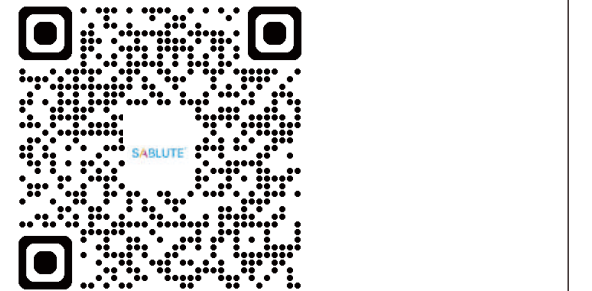
- (1) This device may not cause harmful interference
- (2) This device must accept any interference received, including interference that may cause undesired operation.

Customer service

Buy on SABLUTE, You will get:
30-Day Money-Back Guarantee
90-Day Free Replacement
Hassle-Free Warranty Without Returning
Lifetime Customer Support

Contact us

For FAQs and more information, please visit:



sablute.com/pages/contact
sabluteservices@outlook.com