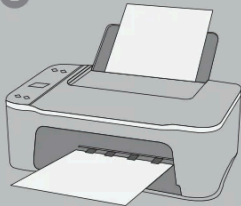
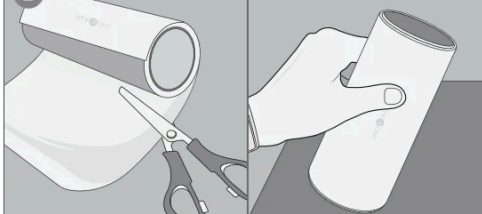


1



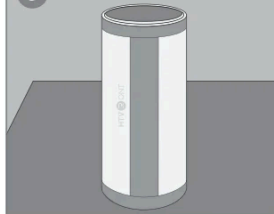
Print the design on sublimation paper.

2



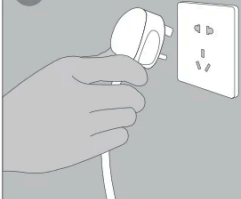
Cut the sublimation paper into the tumbler's size.

3



Fix the sublimation paper tightly to the tumbler with heat-resistant tape; (*The sublimation paper and the tumbler are not included.)

4



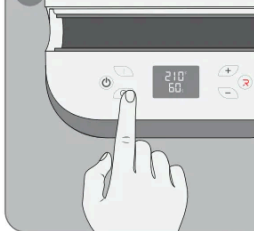
Power on the machine.

5



Press the "Power" button to turn on the machine (Default setting: 100°C/ 210°F, 60 s).

6



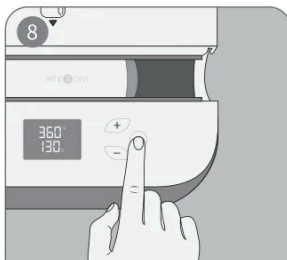
Set the proper temperature and time; wait for the screen to flash three times to preheat. The "Start" button is red, and the screen displays the real-time temp during the process.

7



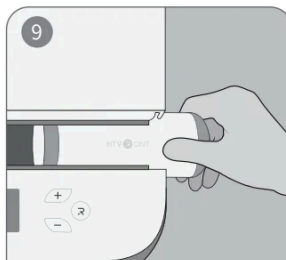
Once the "Start" button turns green, insert the tumbler in the center of the heating area.

8



Press the "Start" button to iron the tumbler.

9



After the countdown, wear the heat-resistant gloves and take the tumbler out.