

UniStrip G4

BCP385 60LED RGB 220V A1 L100 DMX D3

UniStrip G4 - 5090 lm - 120 W K

UniStrip G4 is a surface mounted, exterior-rated LED luminaire that is designed for façade and outdoor architectural lighting applications.;One family that fits all your needs, wall washing, grazing and also linear flood lighting.;The robust mechanical and unique optical designs make it ideal for illuminating buildings facades, bridges, overpasses and any application that requires a linear lighting solution.;Available in white, monochromatic colors, RGB, RGBW and tunable white and DMX control option available with up to 8 pixels (8IDs) to give architects and designers the freedom to explore a wide range of concepts and design with no limitations.

Warnings and Safety

- For outdoor use only

Product data

General information			
Light source color	Red, green and blue	Input Frequency	50 to 60 Hz
Driver included	Yes	Inrush current	70 A
Optical cover/lens type	GT [Tempered glass]	Power Factor (Min)	0.9
Control interface	Dynamic DMX	Controls and dimming	
Connection	Flying leads/wires and 2 Push-in connector 4-pole	Dimmable	Yes
Cable	Cable 0.3 m without plug 3-pole + 2 Cables 0.3 m with connector 4-pole	Mechanical and housing	
Protection class IEC	Safety class I (I)	Housing Material	Aluminum extruded
Flammability mark	F [For mounting on normally flammable surfaces]	Optical cover/lens material	Polymethyl methacrylate
CE mark	CE mark	Effective projected area	0.135 m²
Operating and electrical		Color	Dark gray
Input Voltage	220 to 240 V		

UniStrip G4

Approval and application

Ingress protection code	IP66 [Dust penetration-protected, jet-proof]
Mech. impact protection code	IK06 [1 J]

Initial performance (IEC compliant)

Initial luminous flux (system flux)	5090 lm
Luminous flux tolerance	+/-10%
Initial LED luminaire efficacy	42 lm/W
Init. Corr. Color Temperature	- K
Init. Color Rendering Index	-
Initial input power	120 W
Power consumption tolerance	+/-10%

Application conditions

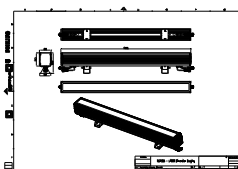
Ambient temperature range	-40 to +50 °C
---------------------------	---------------

Product data

Full product code	871951492247199
Order product name	BCP385 60LED RGB 220V A1 L100 DMX D3
EAN/UPC - Product	8719514922471
Order code	911401737263
Numerator - Quantity Per Pack	1
Numerator - Packs per outer box	2
Material Nr. (12NC)	911401737263
Net Weight (Piece)	3.949 kg



Dimensional drawing



BCP385 60LED RGB 220V A1 L100 DMX D3

