

## Important Information

When using electrical appliances, in order to reduce the risk of fire, electric shock, and/or injury to persons, basic safety precautions should always be followed.

This is not a toy. Close attention is necessary when used near children.  
Do not immerse the appliance in water or any other liquid.  
Do not allow children to play with the packaging materials.

## For your safety...

Read all instructions carefully, even if you are familiar with the appliance.

Do not use this appliance if it appears to be damaged.

Do not look directly into the light source or point it into the eyes of others. This can lead to retinal damage.

This appliance is not watertight and is unsuitable for use in damp environments.



xtralite

Unit 3a Eden Business Park  
Dunns Close  
Nuneaton  
Warwickshire  
CV11 4NE

t: 02476 586 845  
e: [info@xtra-lite.com](mailto:info@xtra-lite.com)

xtralite is a trading name of Trinity Xtras Ltd a Company  
registered in England No 4325172

One Year Limited Warranty  
Made in China  
For further product information visit  
[www.xtra-lite.com](http://www.xtra-lite.com)



 xtralite

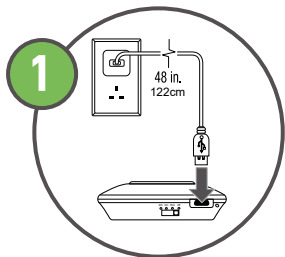
## omni Small LED Tap Light



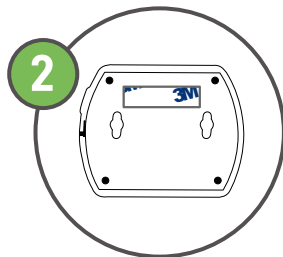
Instruction Manual  
Model: XL20717

Please read these instructions carefully before connecting  
or using the appliance. Keep for future reference.

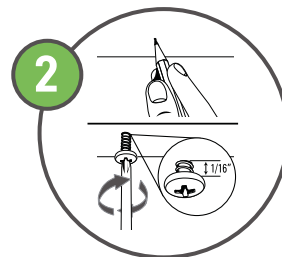
## EASY INSTALLATION:



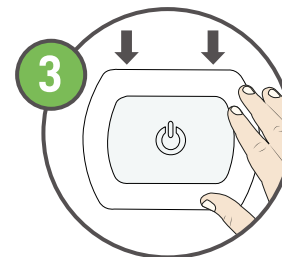
Before first use, use the micro USB cable (included) to charge the product until the indicator light turns green.



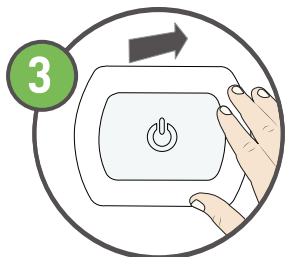
Place the magnetic strip on the back of the unit with the adhesive strip face up.



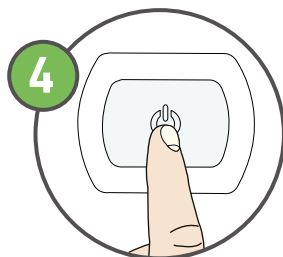
Mark the locations to install the 2 screws. Carefully drive screws in, leaving a little over a 1/16" gap.



Slide the product's two keyhole slots over the two screw heads until both sides are captured by the narrow end of the keyhole slots.

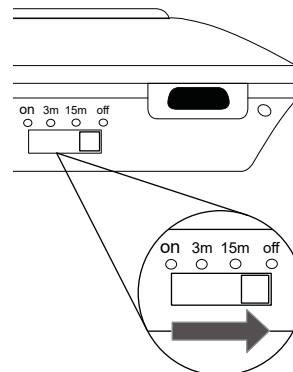


Remove the sticker from the magnetic strip and place the light onto the desired surface. Hold firmly against surface for 30 seconds.



Tap the light to turn on.

## SWITCH SETTINGS:



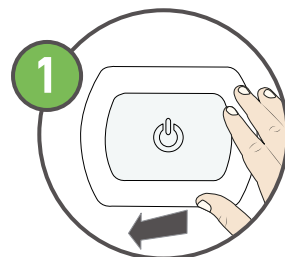
### Switch Controls:

**On:** Light stays on continuously  
**3m:** Light turns off after 3 minutes after being activated.  
**15m:** Light turns off after 15 minutes after being activated.  
**Off:** Light is off

**IMPORTANT:** Failure to follow instructions carefully may cause damage.

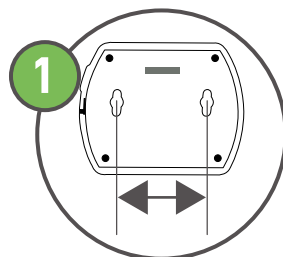
**CAUTION:** Do not hang over beds or on wallpaper. When disposing of, please locate local recycling centre.

## EASY REMOVAL:



Simply pull the unit off the wall. To remount it just place it back to where you had it previously mounted.

## SCREW FIXING:



Locate the sites for the screws by measuring the distance from the centre from one keyhole slot to the other.

Dimensions: 97mm x 77mm x 20mm  
Weight: 60g  
LED quantity: 3  
Lamp CCT: 4000K  
Lumens: 50  
Battery type: Rechargeable Li-ion 3.7V/1500mAh  
Power Switch: Tap ON/OFF  
Indoor use only