



RAMP DOOR
INFINITE HINGE[®]
INSTALLATION MANUAL

TABLE OF CONTENTS

Introduction	2
Safety	2
Weld On	3 - 4
Installation And Requirements	4
Maintenance	5
Bolt On	7 - 8
Installation And Requirements	8
Maintenance	9
Notes	11

Introduction

Additional information about this product can be obtained from lci1.com/support or by downloading the free LippertNOW app. The app is available on Apple App Store® for iPhone® and iPad® and also on Google Play™ for Android™ users.

Apple App Store®, iPhone®, and iPad® are registered trademarks of Apple Inc.
Google Play™ and Android™ are trademarks of Google Inc.

For additional support on this product, please visit: <https://support.lci1.com/ramp-doors>

NOTE: Images used in this document are for reference only when assembling, installing and/or operating this product. Actual appearance of provided and/or purchased parts and assemblies may differ.

Safety

Read and understand all instructions before installing or operating this product. Adhere to all safety labels. This manual provides general instructions. Many variables can change the circumstances of the instructions, i.e., the degree of difficulty, operation and ability of the individual performing the instructions. This manual cannot begin to plot out instructions for every possibility, but provides the general instructions, as necessary, for effectively interfacing with the device, product or system. Failure to correctly follow the provided instructions may result in death, serious personal injury, severe product and/or property damage, including voiding of the Lippert limited warranty.

WARNING

The "WARNING" symbol above is a sign that a procedure has a safety risk involved and may cause death or serious personal injury if not performed safely and within the parameters set forth in this manual.

WARNING

Failure to follow instructions provided in this manual may result in death, serious personal injury and/or severe product and property damage, including voiding of the component warranty.

CAUTION

The "CAUTION" symbol above is a sign that a safety risk is involved and may cause personal injury and/or product or property damage if not safely adhered to and within the parameters set forth in this manual.

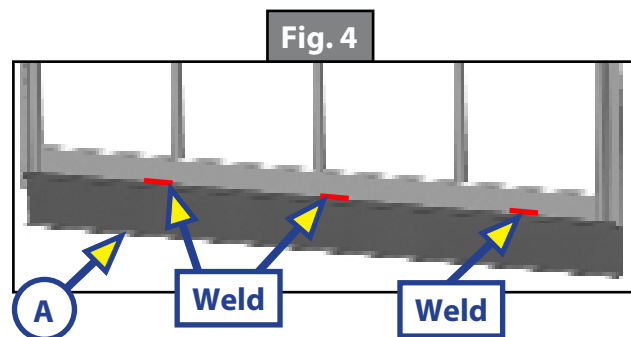
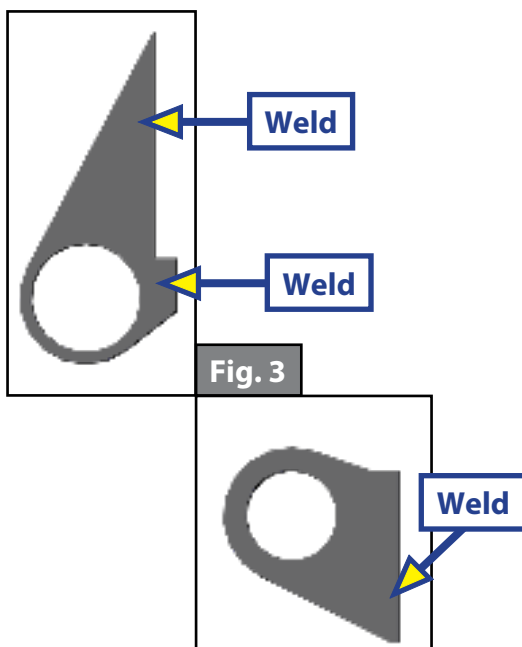
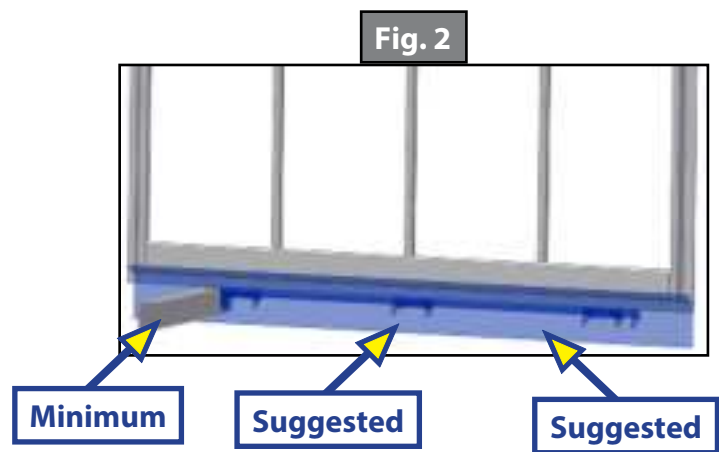
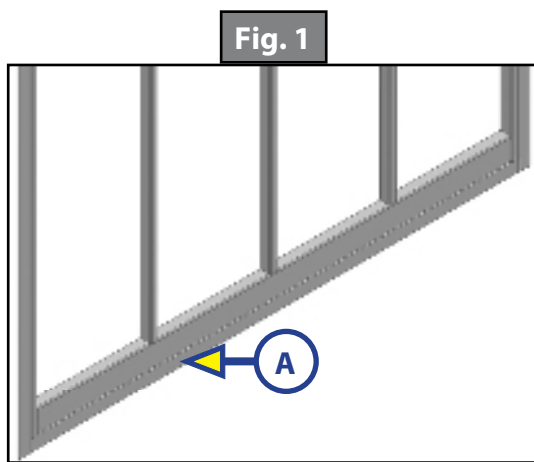
CAUTION

Always wear eye protection when performing service, maintenance or installation procedures. Other safety equipment to consider would be hearing protection, gloves and possibly a full face shield, depending on the nature of the task.

Weld On

1. Tube **MUST** be added to the hinge attachment area of the ramp door. Tube **MUST** be 1" x 3" - 8 ga. tube minimum (Fig. 1A).
2. Rear cross member **MUST** be tied to the next forward cross member. A support tube **MUST** be tied into the frame directly forward of the adjustment bracket at minimum. Forward of each hinge assembly is suggested. Support tube **MUST** be 2" x 3" - 8 ga. tube minimum (Fig. 2).
3. Hinge brackets weld locations noted below. Full welds over the length of each weld surface. Weld both sides of bracket (Fig. 3).
4. Bumper or rear cross member **MUST** be 8 ga. minimum (Fig. 4A). Reinforcing welds are to be applied to the 1" x 3" tube opposite of the hinges to ensure the torque on the hinges does not pull the door frame apart.

NOTE: Weld location highlighted in red.



Weld On

NOTE: Installation requirements and instructions for Torsion Hinge are for 5 - 8 ½ wide Trailers. The operation of this hinge will apply 5,000 – 9,000 in/lb of force to your Trailer.

The hinge and all components must be welded to the Trailer strong enough to withstand the in/lb forces being applied to the door and frame. Read and fully understand Instructions before Installing Hinge. Failure to adhere to these instructions and requirements shall void the limited warranty.

Installation and Requirements

1. The rear cross member and door of the trailer/frame **MUST** be designed, built and braced to eliminate any flexing. The same **MUST** be able to withstand the force applied to them by the torsion hinge while the door is being operated.
2. All Door Hinge Brackets (Fig. 6) **MUST** rest completely against the door without any gaps prior to welding. The Hinge **MUST** be centered on the door. The welds **MUST** be strong enough to withstand the in/lb forces applied. (Soldering and Brazing are not acceptable.)
3. As the door is being installed, the Frame Hinge Brackets (Fig. 7) **MUST** be rotated until full contact is made with the rear cross member. The welds **MUST** be strong enough to withstand the in/lb forces applied. (Soldering and Brazing are not acceptable.)
4. Insert the Hinge End Tube Assembly (Fig. 5) into the end of the hinge.

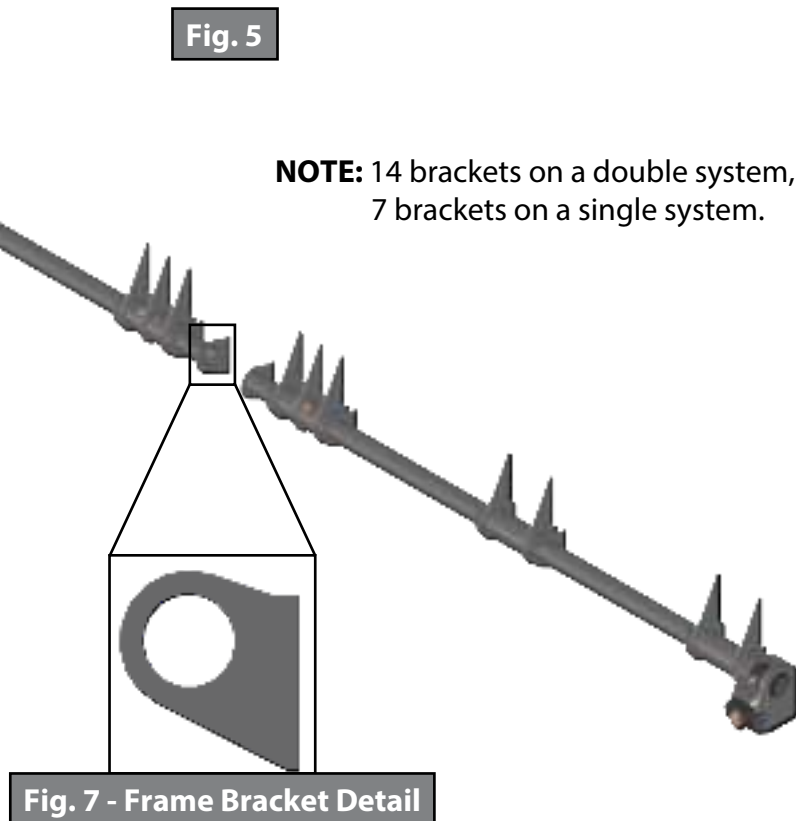
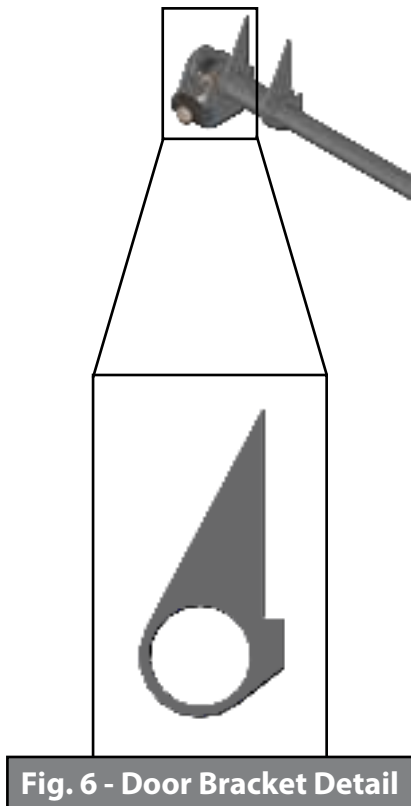


Fig. 7 - Frame Bracket Detail

5. Maintain proper alignment with the hinge assuring that the End Tube is installed on the same centerline as the Hinge. The welds **MUST** be strong enough to withstand the in/lb forces applied. (Soldering and brazing are not acceptable.)
6. Weld the Frame Torsion Bracket Assembly (Fig. 7) to the rear cross member with the back surface of the bracket making full contact with the rear cross member. The welds **MUST** be strong enough to withstand the in/lb forces applied. (Soldering and brazing are not acceptable.)
7. Turn Adjustment bolt (Bolt "A" - Fig. 9) clockwise to add preload as desired and lock the jam nut (Nut "B" - Fig. 9) to the Pivot shaft (Shaft "C" – Fig. 9) after adjustment is made.

NOTE: Adding preload will lessen the force required to raise the ramp door, however it will increase the closing force of the door.

NOTE: Hinge does **NOT** come from Lippert pre-adjusted.



All attachment points MUST have sufficient welds. Any flexing of the frame will result in fatigue fracture at attachment point. Do not attach the torsion hinge to a frame or door that flexes at the point of attachment.

Do not open the door with the infinite hinge only tacked, it MUST be fully welded before operation.

Do not stand behind the door while operating. Keep all body parts clear of the door while closing.

Maintenance

Add grease during torsion hinge installation - final assembly. General purpose chassis grease is recommended. Annual maintenance should be performed and documented with a visual inspection for any damage and application of lubricant at grease points.

Fig. 8 - Assembly A

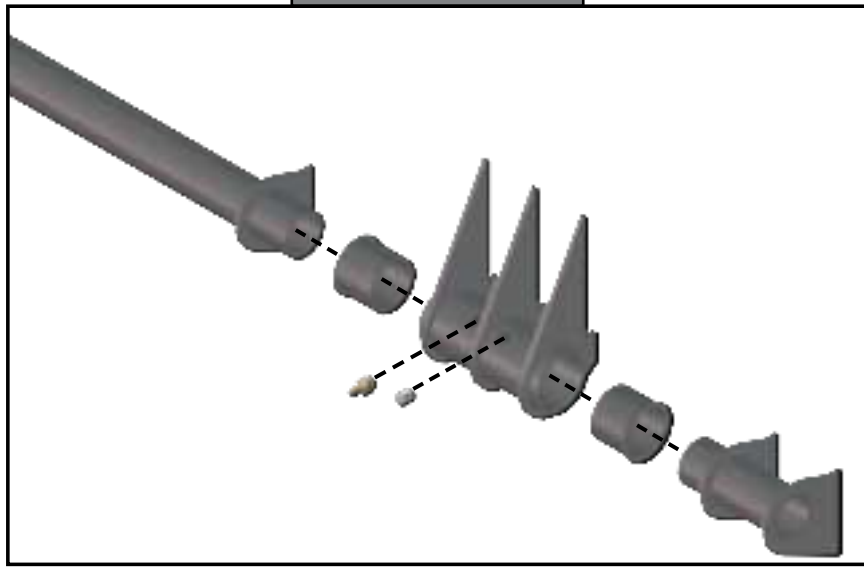
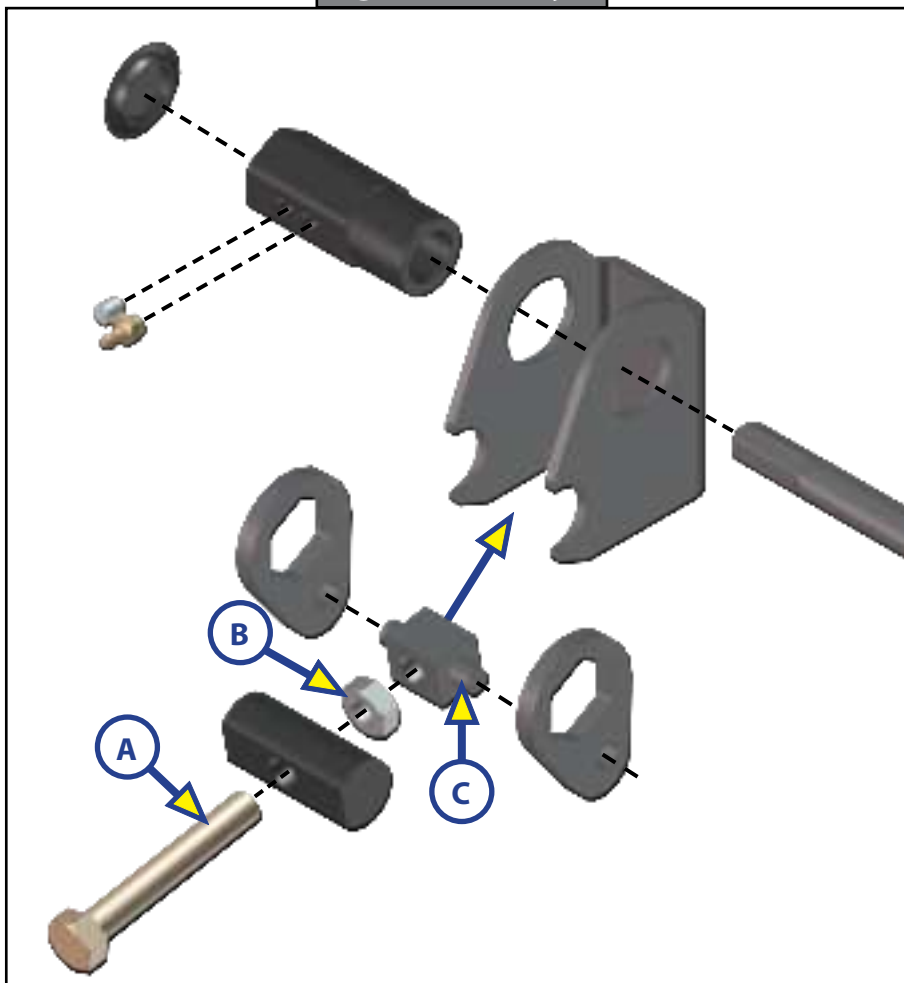


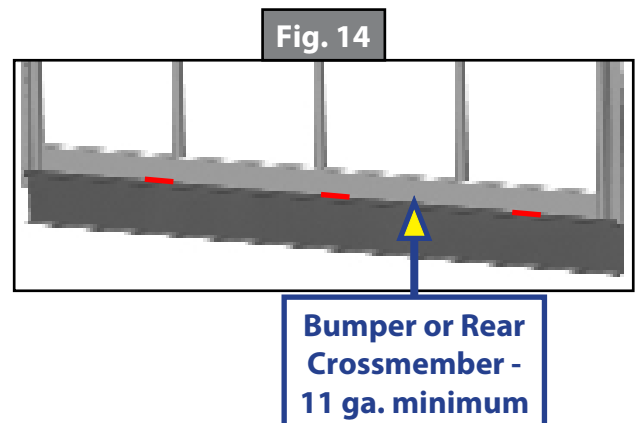
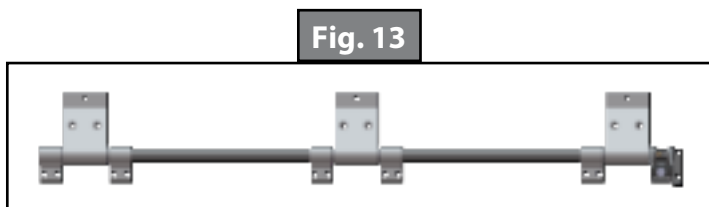
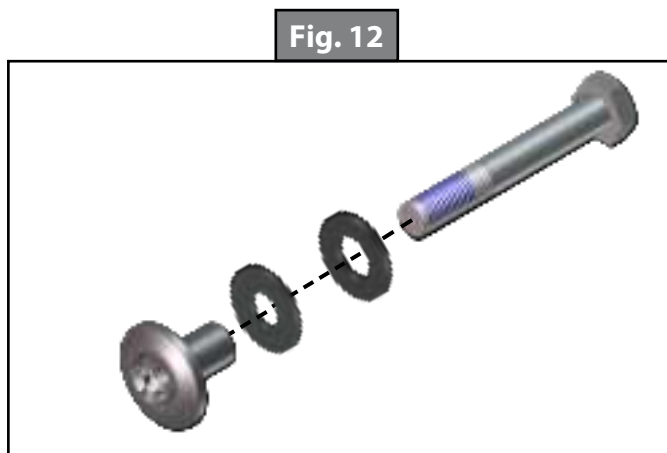
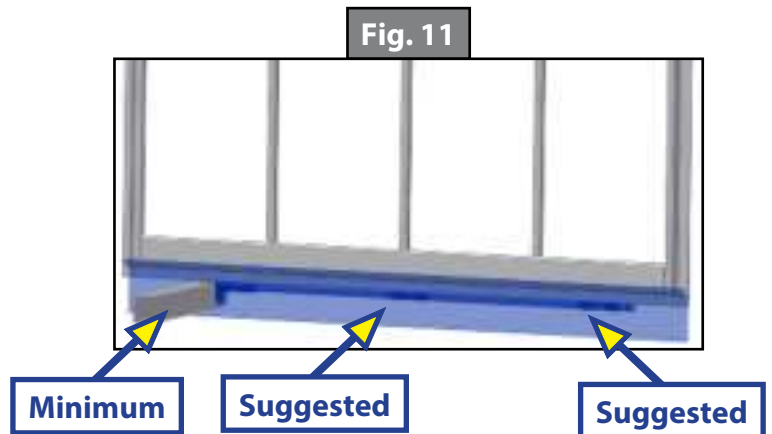
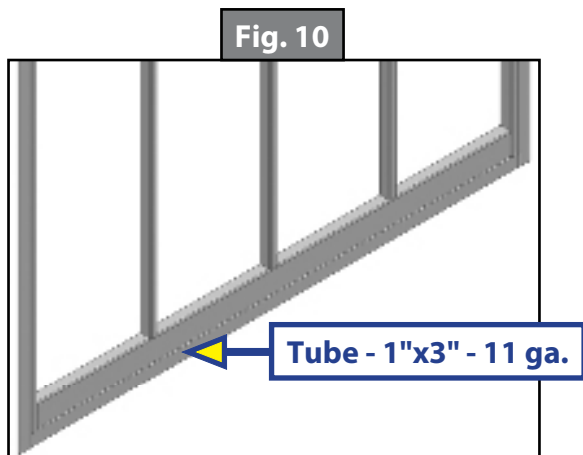
Fig. 9 - Assembly B



Bolt On

1. Tube **MUST** be added to the hinge attachment area of the ramp door. Tube **MUST** be 1" x 3" - 11 ga. tube minimum (Fig. 10).
2. Rear cross member **MUST** be tied to the next forward cross member. A support tube **MUST** be tied into the frame directly forward of the adjustment bracket at minimum. Forward of each hinge assembly is suggested. Support tube **MUST** be 2" x 3" - 11 ga. tube minimum (Fig. 11).
3. Hinge brackets are bolted using Torx barrel nut and hex cap screw and washers (Fig. 12).
4. Bumper or rear cross member **MUST** be 11 ga. minimum (Fig. 14). Reinforcing welds are to be applied to the 1" x 3" tube opposite of the hinges to ensure the torque on the hinges does not pull the door frame apart.

NOTE: Note weld location highlighted in red.



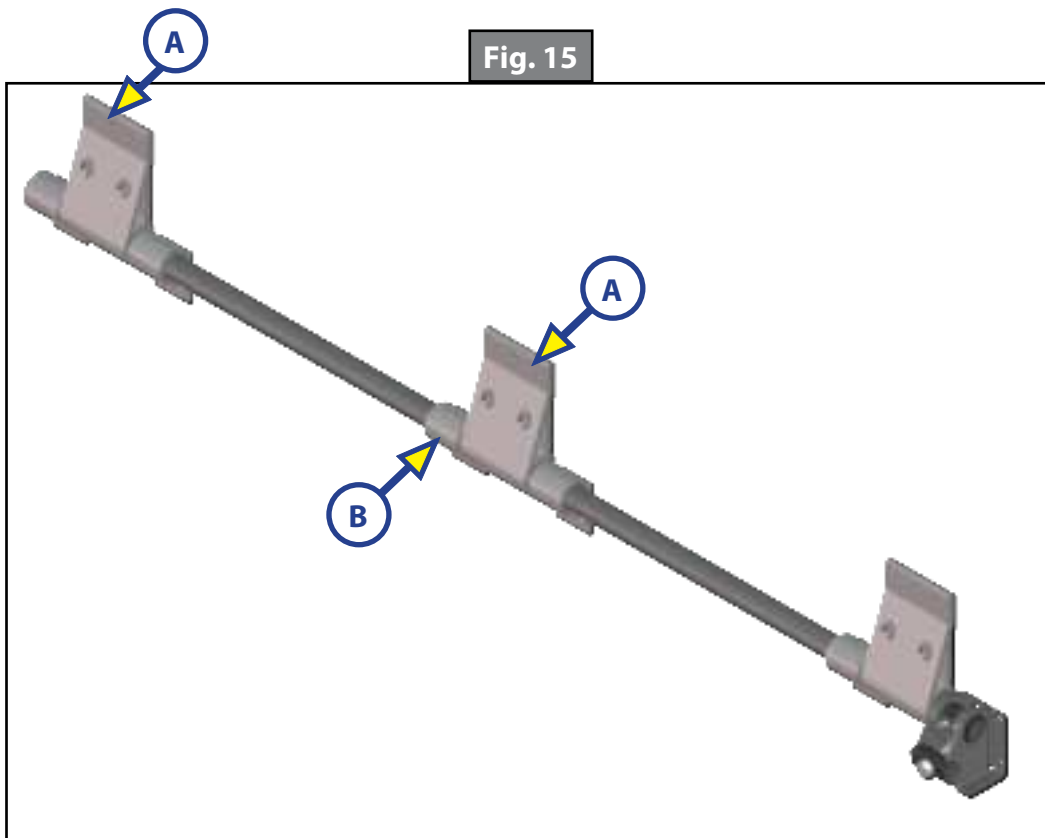
Bolt On

NOTE: Installation requirements and instructions for Torsion Hinge are for 5 and 8 ½ wide trailers. The operation of this hinge will apply 5,000 – 9,000 in/lb of force to your trailer.

The hinge and all components must be bolted to the Trailer strong enough to withstand the in/lb forces being applied to the door and frame. Read and fully understand instructions before installing hinge. Failure to adhere to these instructions and requirements shall void the limited warranty.

Installation and Requirements

1. The rear cross member and door of the trailer/frame **MUST** be designed, built and braced to eliminate any flexing. The same **MUST** be able to withstand the force applied to them by the torsion hinge while the door is being operated.
2. All Door Hinge Brackets (Fig. 15A) **MUST** rest completely against the door without any gaps prior to bolting. The hinge **MUST** be centered on the door. The bolts **MUST** be strong enough and torqued to withstand the in/lb forces applied.
3. As the door is being installed, the frame hinge brackets (Fig. 15B) **MUST** be rotated until full contact is made with the rear cross member. The bolts **MUST** be strong enough and torqued to withstand the in/lb forces applied.



4. Insert the Hinge End Tube Assembly (Fig. 16 - Assembly A) into the end of the hinge. Maintain proper alignment with the hinge assuring that the end tube is installed on the same centerline as the hinge. The bolts **MUST** be strong enough and torqued to withstand the in/lb forces applied.
5. Bolt the Frame Torsion Bracket Assembly (Fig. 17 - Assembly B) to the rear cross member with the back surface of the bracket making full contact with the rear cross member. The bolts **MUST** be strong enough and torqued to withstand the in/lb forces applied.
6. Turn adjustment bolt (Bolt "A" - see Fig. 17) clockwise to add preload as desired and lock the jam nut (Nut "B" - see Fig. 17) to the pivot shaft (Shaft "C" – see Fig. 17) after adjustment is made.

NOTE: Adding preload will lessen the force required to raise the ramp door, however it will increase the closing force of the door.)

NOTE: Hinge does NOT come from Lippert pre-adjusted.



All attachment points MUST have Grade 8 bolts torqued correctly.

Any flexing of the frame will result in fatigue fracture at attachment point. Do not attach the torsion hinge to a frame or door that flexes at the point of attachment.

Do not stand behind the door while operating. Keep all body parts clear of the door while closing.

Maintenance

Annual maintenance should be performed and documented with a visual inspection for any damage and application of lubricant at grease points.

Fig. 16 - Assembly A

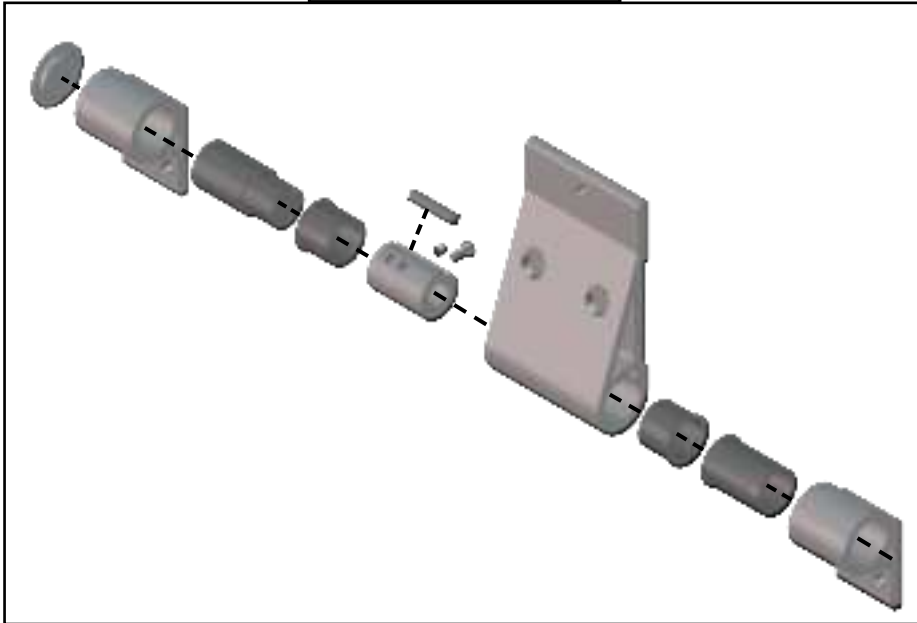
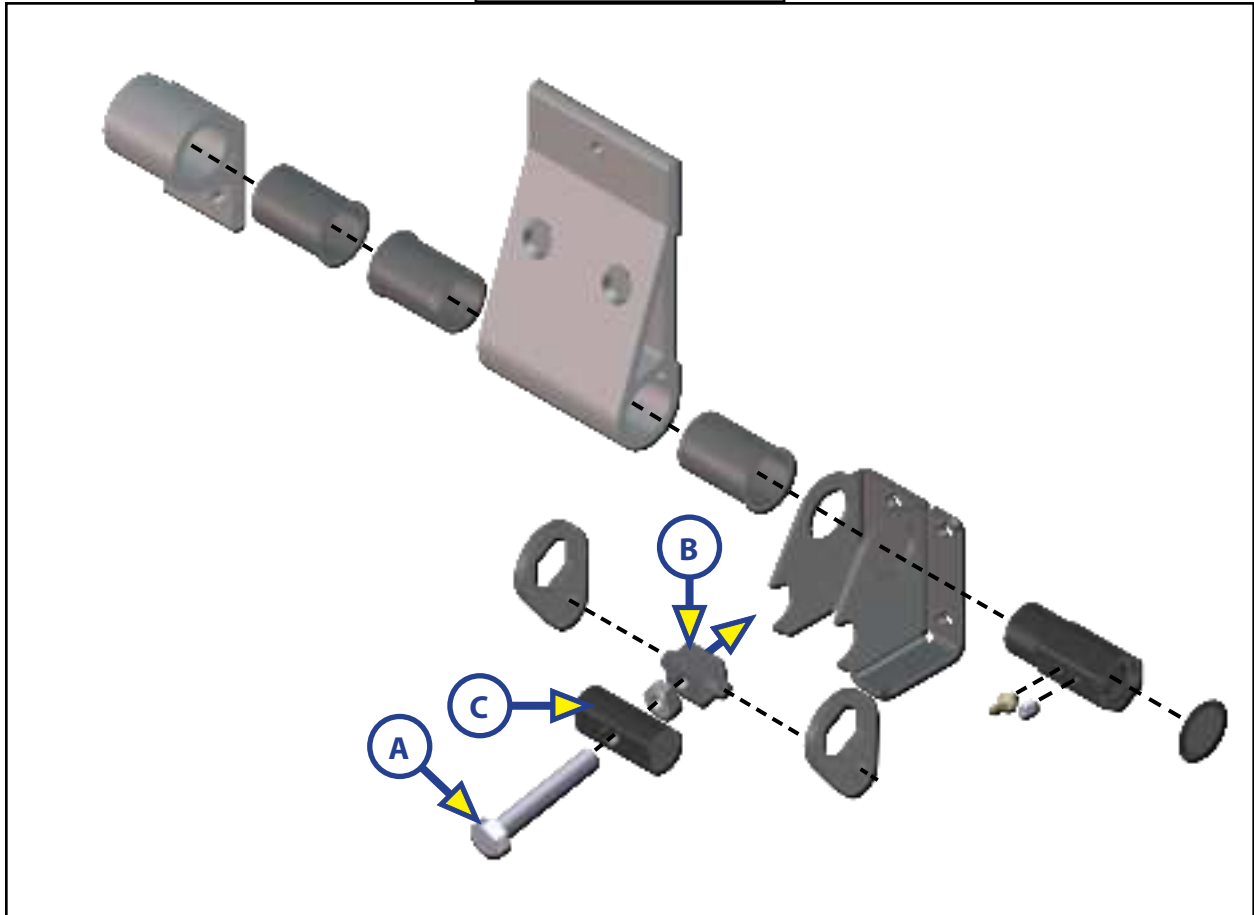


Fig. 17 - Assembly B



Notes

[illegible]



The contents of this manual are proprietary and copyright protected by Lippert. Lippert prohibits the copying or dissemination of portions of this manual unless prior written consent from an authorized Lippert representative has been provided. Any unauthorized use shall void any applicable warranty. The information contained in this manual is subject to change without notice and at the sole discretion of Lippert. Revised editions are available for free download from lippert.com.

Please recycle all obsolete materials.

For all concerns or questions, please contact Lippert
Ph: 432-LIPPERT (432-547-7378) | Web: lippert.com | Email: customerservice@lci1.com