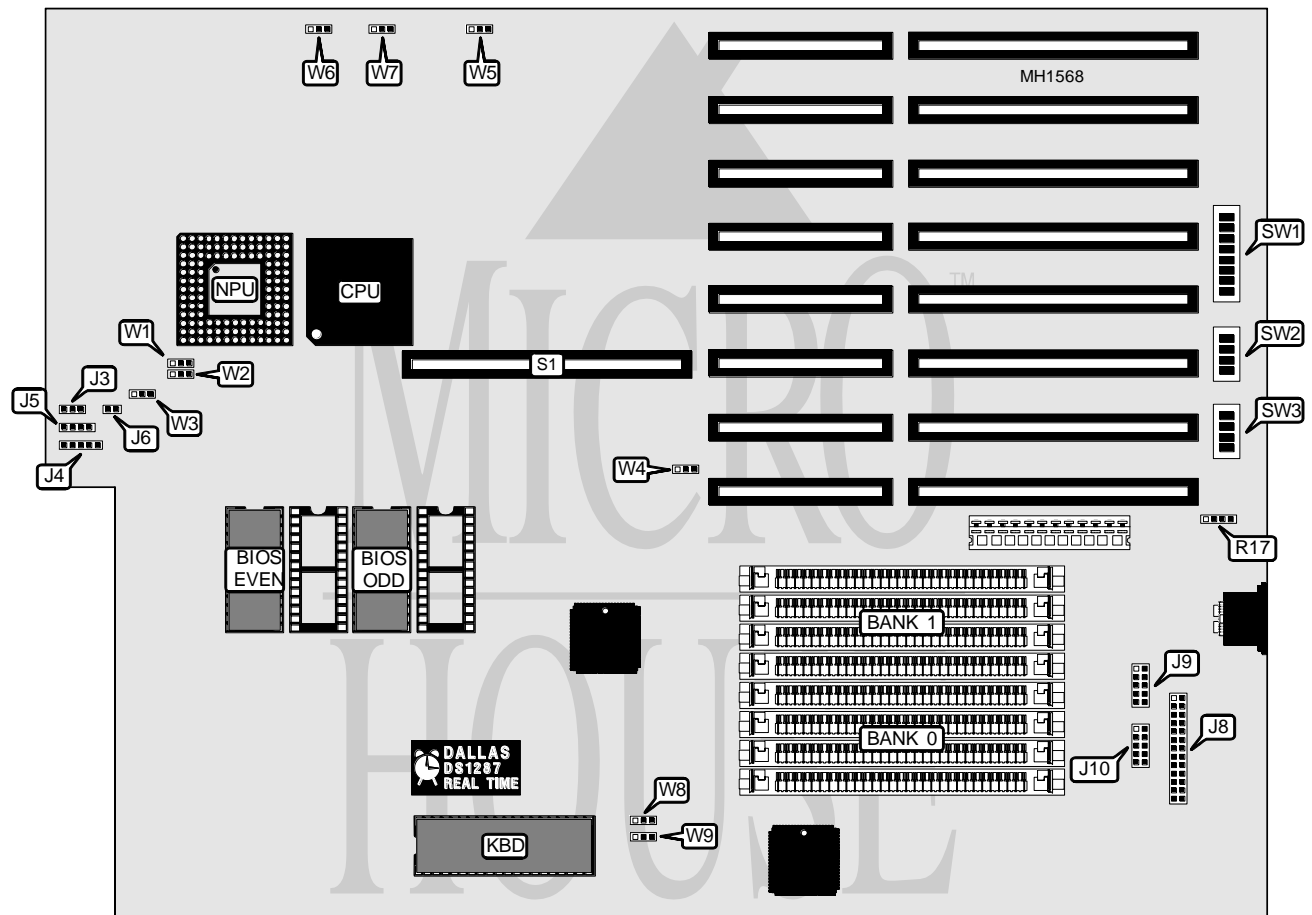


EVEREX SYSTEMS, INC.

AGI 3000M 386/20 (EV-1830D)

Processor	80386DX
Processor Speed	20MHz
Chip Set	C & T
Max. Onboard DRAM	8MB
Cache	None
BIOS	AMI
Dimensions	350mm x 280mm
I/O Options	32-bit external memory card, parallel port, serial ports (2)
NPU Options	80387DX/3167



CONNECTIONS			
Purpose	Location	Purpose	Location
Turbo LED	J3	Serial port 1	J9
Power LED & keylock	J4	Serial port 2	J10
Speaker	J5	External battery	R17
Reset switch	J6	32-bit external memory card	S1
Parallel port	J8		

Continued on next page . . .

EVEREX SYSTEMS, INC.

AGI 3000M 386/20 (EV-1830D)

... continued from previous page

USER CONFIGURABLE SETTINGS		
Function	Jumper/Switch	Position
í System speed normal	W3	pins 2 & 3 closed
System speed low	W3	pins 1 & 2 closed
í Monitor type select color	W4	pins 2 & 3 closed
Monitor type select monochrome	W4	pins 1 & 2 closed
í Factory configured - do not alter	W5	pins 2 & 3 closed
í Factory configured - do not alter	W8	pins 2 & 3 closed
í Factory configured - do not alter	W9	pins 2 & 3 closed

PARALLEL PORT CONFIGURATION					
LPT	Address	SW2/3	SW2/4	SW3/3	SW3/4
2	378-37Fh	Off	Off	Off	On
3	278-27Fh	Off	On	On	Off
Disabled	N/A	On	On	Off	Off

Note: IRQ7 is assigned to LPT2 and IRQ5 is assigned to LPT3 by default.

SERIAL PORT CONFIGURATION					
PORT1 (J9)	PORT2 (J10)	SW2/1	SW2/2	SW3/1	SW3/2
COM1	COM2	Off	Off	On	On
COM1	Disabled	Off	On	On	Off
Disabled	COM2	On	Off	Off	On
Disabled	Disabled	On	On	Off	Off

WAIT STATE CONFIGURATION		
Wait state	W1 (8-bit)	W2 (16-bit)
4 wait state	pins 2 & 3 closed	pins 2 & 3 closed
í5 wait state	pins 1 & 2 closed	pins 1 & 2 closed

SYSTEM DRAM CONFIGURATION				
Size	Bank 0	Bank 1	W6	W7
1MB	(4) 256K x 9	NONE	pins 1 & 2 closed	pins 1 & 2 closed
2MB	(4) 256K x 9	(4) 256K x 9	pins 1 & 2 closed	pins 1 & 2 closed
4MB	(4) 1M x 9	NONE	pins 2 & 3 closed	pins 1 & 2 closed
5MB	(4) 256K x 9	(4) 1M x 9	pins 1 & 2 closed	pins 2 & 3 closed
8MB	(4) 1M x 9	(4) 1M x 9	pins 2 & 3 closed	pins 2 & 3 closed

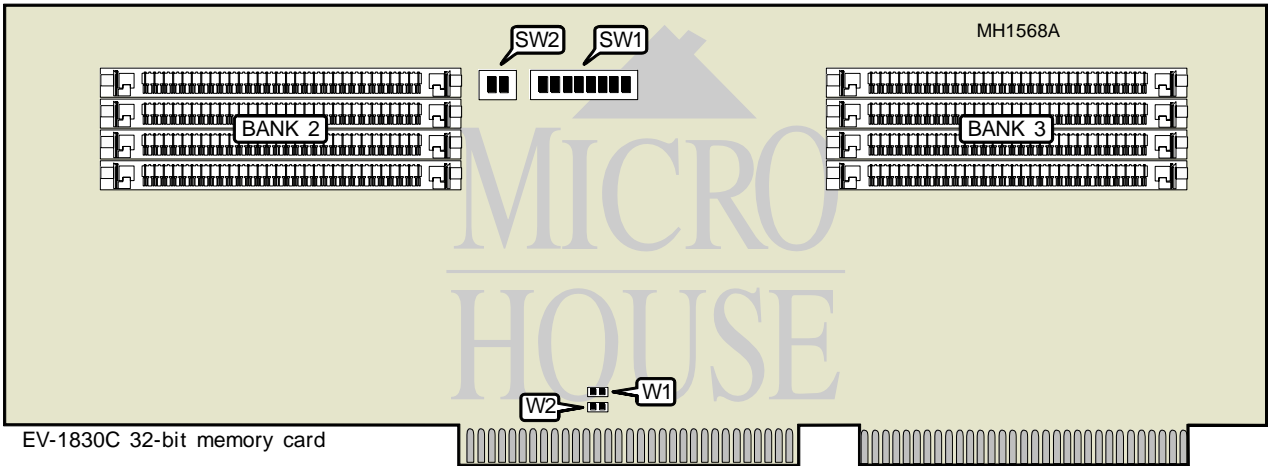
SYSTEM MEMORY CONFIGURATION SW1								
Size	Switch 1	Switch 2	Switch 3	Switch 4	Switch 5	Switch 6	Switch 7	Switch 8
1MB	On	On	On	On	On	On	On	On
2MB	On	On	Off	On	On	Off	On	On
4MB	Off	Off	On	On	On	Off	Off	On
5MB	On	Off	Off	On	On	Off	Off	Off
8MB	Off	Off	Off	Off	On	Off	Off	Off

Continued on next page

EVEREX SYSTEMS, INC.

AGI 3000M 386/20 (EV-1830D)

... continued from previous page.



USER CONFIGURABLE SETTINGS		
Function	Jumper	Position
Memory type select 256K SIMMs	W1	pins 2 & 3 closed
Memory type select 1MB SIMMs	W2	pins 1 & 2 closed

EXTERNAL MEMORY DRAM CONFIGURATION CARD #1 (SW1)											
Total Memory	System Memory	Bank 0	Bank 1	1	2	3	4	5	6	7	8
3MB	2MB	(4) 256K x 9	NONE	Off	Off	Off	Off	Off	Off	On	On
4MB	2MB	(4) 256K x 9	(4) 256K x 9	On	Off	Off	On	Off	Off	On	On
5MB	1MB	(4) 1M x 9	NONE	Off	Off	Off	Off	On	Off	On	On
6MB	2MB	(4) 1M x 9	NONE	Off	Off	Off	On	Off	Off	On	On
7MB	1MB	(4) 256K x 9	(4) 1M x 9	On	Off	Off	On	Off	Off	On	On
8MB	0MB	(4) 1M x 9	(4) 1M x 9	On	Off	Off	Off	Off	Off	Off	Off
9MB	1MB	(4) 1M x 9	(4) 1M x 9	On	Off	Off	Off	On	Off	On	On
10MB	2MB	(4) 1M x 9	(4) 1M x 9	On	Off	Off	On	Off	Off	On	On
Notes: System memory refers to memory on the main board only. For the 8MB configuration, ICX-1930B and ICX-1830C-009D must be installed. Use PAL U108 on the system board and PAL U9 on the external memory card #1.											

Continued on next page

EVEREX SYSTEMS, INC.

AGI 3000M 386/20 (EV-1830D)

... continued from previous page

c

EXTERNAL MEMORY DRAM CONFIGURATION CARD #1 (SW2)

Total Memory	System Memory	Bank 1	Bank 2	Switch 1	Switch 2
3MB	2MB	(4) 256K x 9	NONE	On	On
4MB	2MB	(4) 256K x 9	(4) 256K x 9	On	On
5MB	1MB	(4) 1M x 9	NONE	Off	Off
6MB	2MB	(4) 1M x 9	NONE	Off	Off
7MB	1MB	(4) 256K x 9	(4) 1M x 9	On	Off
8MB	0MB	(4) 1M x 9	(4) 1M x 9	Off	Off
9MB	1MB	(4) 1M x 9	(4) 1M x 9	Off	Off
10MB	2MB	(4) 1M x 9	(4) 1M x 9	Off	Off

Notes: System memory refers to memory on the mainboard only.

For the 8MB onfiguration, ICX-1930B and ICX-1830C-009D must be installed. Use PAL U108 on the system board and PAL U9 on the external memory card #1.

EXTERNAL MEMORY DRAM CONFIGURATION CARD #2 (SW1)

Total Memory	System Memory	Bank 2	Bank 3	1	2	3	4	5	6	7	8
11MB	2MB	(4) 256K x 9	NONE	Off	On	Off	On	Off	Off	On	On
12MB	2MB	(4) 256K x 9	(4) 256K x 9	On	On	Off	On	Off	Off	On	On
13MB	1MB	(4) 1M x 9	NONE	Off	On	Off	Off	On	Off	On	On
14MB	2MB	(4) 1M x 9	NONE	Off	On	Off	On	Off	Off	On	On
15MB	2MB	(4) 256K x 9	(4) 1M x 9	On	On	Off	On	Off	Off	On	On
16MB	0MB	(4) 1M x 9	(4) 1M x 9	On	On	Off	Off	Off	On	On	On

Notes: External memory on card #1 must be fully populated before installing card #2.

Total memory includes the memory installed on card #1.

System memory refers to memory on the mainboard only.

For the 16MB configuration, ICX-1930B and ICX-1830C-009D must be installed. Use PAL U108 on the system board and PAL U9 on the external memory card #1.

EXTERNAL MEMORY DRAM CONFIGURATION CARD #2 (SW2)

Total Memory	System Memory	Bank 2	Bank 3	Switch 1	Switch 2
11MB	2MB	(4) 256K x 9	NONE	On	On
12MB	2MB	(4) 256K x 9	(4) 256K x 9	On	On
13MB	1MB	(4) 1M x 9	NONE	Off	Off
14MB	2MB	(4) 1M x 9	NONE	Off	Off
15MB	2MB	(4) 256K x 9	(4) 1M x 9	On	Off
16MB	0MB	(4) 1M x 9	(4) 1M x 9	Off	Off

Notes: External memory on card #1 must be fully populated before installing card #2.

Total memory includes the memory installed on card #1.

System memory refers to memory on the mainboard only.

For the 16MB configuration, ICX-1930B and ICX-1830C-009D must be installed. Use PAL U108 on the system board and PAL U9 on the external memory card #1.