

SOFTWARE

Miko 3 connects with proprietary software developed and copyrighted by Miko. ©2021 RN Chidakashi Technologies Private Limited. All Rights Reserved. Miko logo and Miko 3 logo are trademarks of RN Chidakashi Technologies Private Limited. All other trademarks mentioned in this guide are the property of their respective owners. Certain portions of the software included or downloaded into the Products contain objects and/or executables derived from copyrighted sources and licensed to RN Chidakashi Technologies Private Limited. RN Chidakashi Technologies Private Limited grants you a nonexclusive, non-transferable license to use its proprietary software included in the Products (the "Software"), in executable form, solely as embedded in the Products, and solely for your non-commercial use. You may not copy or modify the Software. You acknowledge that the Software contains trade secrets of RN Chidakashi Technologies Private Limited. To protect such trade secrets, you agree not to disassemble, decompile or reverse engineer the Firmware nor permit any third party to do so, except to the extent such restrictions are prohibited by law. RN Chidakashi Technologies Private Limited reserves all rights and licenses in and to the Software not expressly granted to you here under. App availability badges are the trademarks of the respective owners.

MIKO ONE-YEAR LIMITED WARRANTY SUMMARY

Your purchase comes with a one-year limited warranty in the U.S. For consumers who are covered by consumer protection laws or regulations in their country of purchase or, if different, their country of residence, the benefits conferred by this warranty are in addition to all rights and remedies conveyed by such consumer protection laws and regulations. The warranty covers against manufacturing defects. It does not cover abuse, alteration, theft, loss, unauthorized and/or unreasonable use or normal wear and tear. During the warranty period, RN Chidakashi Technologies Private Limited will make sole determination of a defect. If RN Chidakashi Technologies Private Limited determines a defect, RN Chidakashi Technologies Private Limited at its sole discretion, will repair or replace the defective part or product with a comparable part. This does not affect your statutory rights. For full details, safety updates, or support, see miko.com/warranty


© 2021 RN Chidakashi Technologies Private Limited. All rights reserved. Miko, Miko 3, and the Miko and Miko 3 logos are registered or pending trademarks of RN Chidakashi Technologies Private Limited.

Flat No-4, Plot No – 82, Stambh Tirth
R.A. Kidwai Road, Wadala West
Mumbai – 400031, Maharashtra, India

Designed in India. Made in China.

SUPPORT

www.miko.ai/support

PDF icon  Save these instructions for future reference, as they contain important information. For warranty details and updates to regulatory information, visit miko.ai/compliance.

ENVIRONMENT

Operating Temperature: 0°C to 40°C (32°F to 104°F)

Storage/Transportation Temperature: 0°C to 50°C (32°F to 122°F)

IP Rating : IP20 (Do not expose to any form of liquids / fluids / gases)

Low air pressure at high Altitude: 54KPa (high: 5000m);

Using Miko 3 in very cold conditions could temporarily shorten battery life and cause the robot to turn off. Battery life will return to normal when you bring Miko 3 back to higher ambient temperatures. Using Miko 3 in very hot conditions could permanently shorten battery life. Do not expose Miko 3 to high temperature conditions such as direct sunlight or hot car interiors. Avoid using Miko 3 in areas with dust, dirt or liquids, as they could damage or impede the robot's motors, gears and sensors.

MAINTENANCE

For best results, use indoors only. Never expose Miko 3 to water. Miko 3 is built with no user serviceable parts. For optimal performance, keep Miko 3 and the sensors clean.

SAFETY INFORMATION

WARNING: Failure to follow these instructions could result in electric shock, other injury or damage.

The USB-C Power adapter may become very warm during normal charging. The robot complies with the user accessible surface temperature limits defined by the International Standard for Safety of Information Technology Equipment (IEC60950-1). However, even within these limits, sustained contact with warm surfaces for long periods of time may cause discomfort or injury. To reduce the possibility of overheating or heat-related injuries:

- I. Always allow adequate ventilation around the power adapter and use care when handling it.
- II. Do not place the power adapter under a blanket, a pillow or your body when the adapter is connected to the bot and charging.
- III. Take special care if you have a physical condition that affects your ability to detect heat against the body.

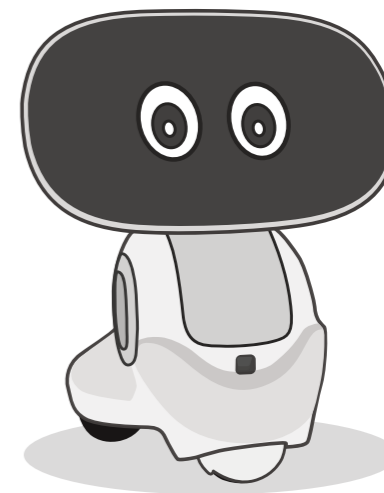
Don't charge the robot in wet locations such as near a sink, bathtub, or shower stall and don't connect or disconnect the adapter cable with wet hands.

Unplug the USB-C Power adapter if any of the following conditions exists:

1. Recommended Adaptor Output: 15W Power; 5V --- 3A
2. Your USB cable becomes frayed or damaged.
3. The plug part of the adapter or adapter has become damaged.
4. The adapter is exposed to rain, liquid or excessive moisture.



Ridiculously smart. Seriously fun.



Product Information Guide

By using Miko 3, you agree to the terms and policies found at miko.ai/terms, including the Miko Privacy Policy.

Caution – Electrically operated product: As with all electric products, precautions should be observed during handling and use to prevent electric shock.

Caution- Battery should only to be charged by adults. Risk of explosion if battery replaced by an incorrect type. Dispose of used batteries according to the instructions.

Small Part Warning:

- Miko 3 and accessories have small parts contained within them that may present a choking hazard to small children and pets. Keep your robots and accessories away from children under 3yrs.
- If your robot is broken, gather all parts immediately and store them in a safe place away from small children

Warning:

Class 1 laser product. This class is eye-safe under all operating conditions. A Class1 laser is safe for use under all reasonably anticipated conditions of use; in other words, it is not expected that the maximum permissible exposure (MPE) can be exceeded.

BATTERY INFORMATION

Don't attempt to replace the Miko battery yourself—you may damage the battery, which could cause overheating, fire, and injury. Replacement of a battery with an incorrect type can defeat a safeguard. The lithium-ion battery in your Miko should be serviced or recycled by Miko or an authorized service provider of Miko, and must be recycled or disposed off separately from household waste. Dispose of batteries according to your local environmental laws and guidelines. Disposal of a battery into fire or a hot oven may result in an explosion.

SAFETY AND HANDLING

To avoid injury or harm, please read all the safety information and operating instructions. To reduce the risk of damage or injury, do not attempt to remove Miko 3's shell. Do not attempt to service Miko 3 by yourself. Please refer all non-routine service questions to MIKO.

FCC STATEMENT

This device complies with Part 15 of the FCC Rules. Operation is subject to the following two conditions:

(1) This device may not cause harmful interference and (2) this device must accept any interference received, including interference that may cause undesired operation.

Note: This equipment has been tested and found to comply with the limits for a Class B digital device, pursuant to Part 15 of the FCC Rules. These limits are designed to provide reasonable protection against harmful interference in a residential installation. This equipment generates, uses and can radiate radio frequency energy and, if not installed and used in accordance with the instructions, may cause harmful interference to radio communications. However, there is no guarantee that interference will not occur in a particular installation. If this equipment does cause harmful interference to radio or television reception, which can be determined by turning the equipment off and on, the user is encouraged to try to correct the interference by one of the following measures:

- Reorient or relocate the receiving antenna.
- Increase the separation between the equipment and receiver.
- Connect the equipment into an outlet on a circuit different from that to which the receiver is connected.
- Consult the dealer or an experienced radio/TV technician for help.

Any changes or modifications not expressly approved by the party responsible for compliance could void the user's authority to operate this equipment

Warning:

The device must not be co-located or operating in conjunction with any other antenna or transmitter.

RF Exposure - This device is only authorized for use in a mobile application. At least 20 cm of separation distance between the device and the user's body must be maintained at all times.

RESPONSIBLE PARTY FOR FCC MATTERS:

RN Chidakashi Technologies Private Limited
Flat No -4, Plot No 82, Stambh Tirth,
R.A. Kidwai Road, Wadala West,
Mumbai – 400 031



CE COMPLIANCE STATEMENT

This product complies with the requirements of European Directives. For more details on compliance, visit miko.ai/compliance. Hereby, RN Chidakashi Technologies Private Limited declares that the radio equipment type Miko 3 is in compliance with Directive 2014/53/EU. The full text of the EU declaration is available at the following internet address: miko.ai/compliance

RADIO FREQUENCY BANDS AND POWER

WiFi frequency band: 2.4 GHz - 5 GHz

WiFi maximum transmitting power: 20 mW

BLE frequency band: 2.4 GHz - 2.483 GHz

BLE maximum transmitting power: 1.2 mW



WEEE

The symbol above means that according to local laws and regulations, your product should be disposed of separately from household waste. When this product reaches its end of life, take it to a collection point designated by local authorities. Some collection points accept products for free. The separate collection and recycling of your product at the time of disposal will help conserve natural resources and ensure that it is recycled in a manner that protects human health and the environment. Keep these instructions for future reference as they contain important information. For alternate translations of these instructions and updates to regulatory information, visit miko.com/compliance.

RoHS COMPLIANCE

This product is in compliance with Directive 2011/65/EU of the European Parliament and of the council of 8 June 2011 on the restriction of the use of certain hazardous substance

CAMERA / DISTANCE SENSOR

Lightly wipe Miko 3's sensors (located on the front face and chest) with a lint-free cloth to remove any smudges or debris. Avoid any contact or exposure that might scratch the lenses. Any damage to the lenses has the potential to impair Miko 3's capabilities.