



**2017-2023 Chevrolet Camaro ZL1 and
2016-2018 Camaro SS
BIG MOUTH Ram Air Intake
Installation Guide**

Kit Contents

Please review this document before attempting installation.

You will need basic hand tools and about 2 hours of installation time.

Please review the table below and make sure you have received the kit contents.

Description	Qty in kit
	#
M6 x 65mm socket head cap screw	1
M6 x 100mm socket head cap screw	1
Steel mount plate	1
M6 lock nut	2



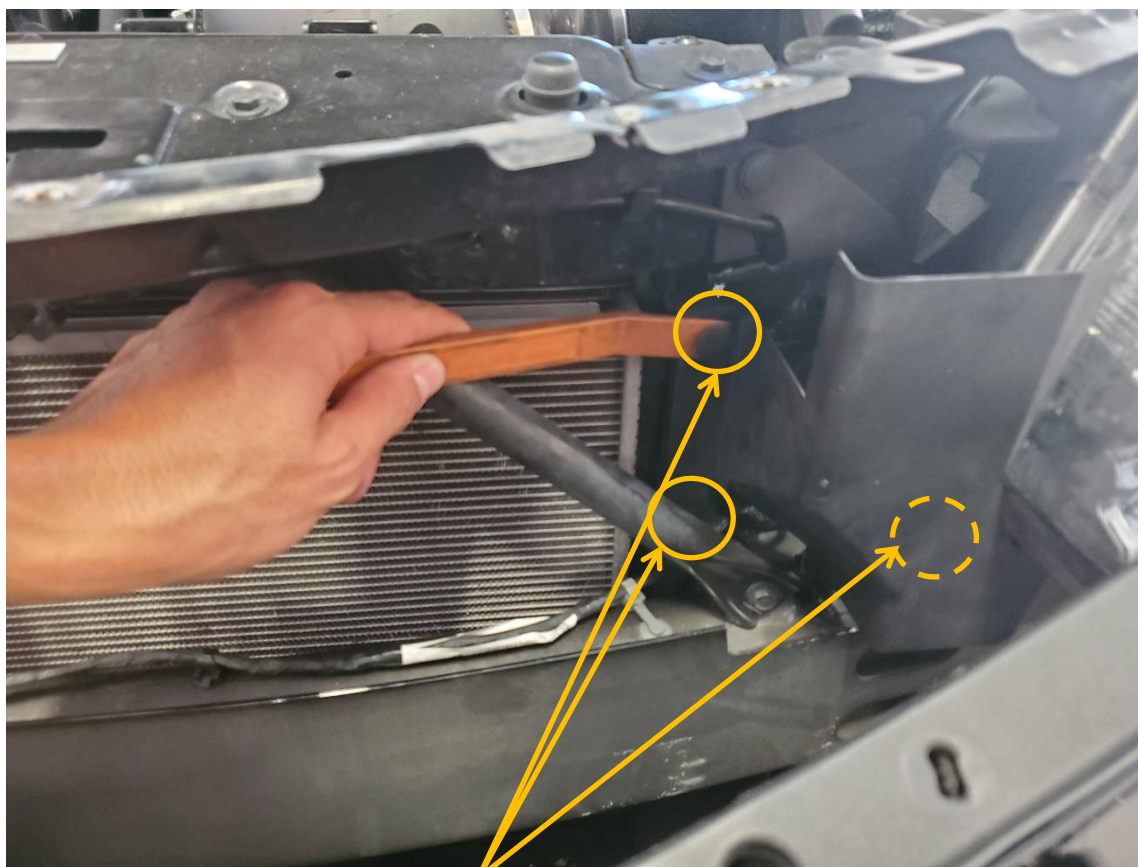
Stock Components Removal

Get access to the area shown below by removing the top screws bumper screws and wheel well screws of the bumper. Complete bumper removal is not necessary, just the top portion of the bumper to allow access to the cowl. Using a jack on the driver's side is suggested since it helps the bumper sit lower.



Stock Components Removal

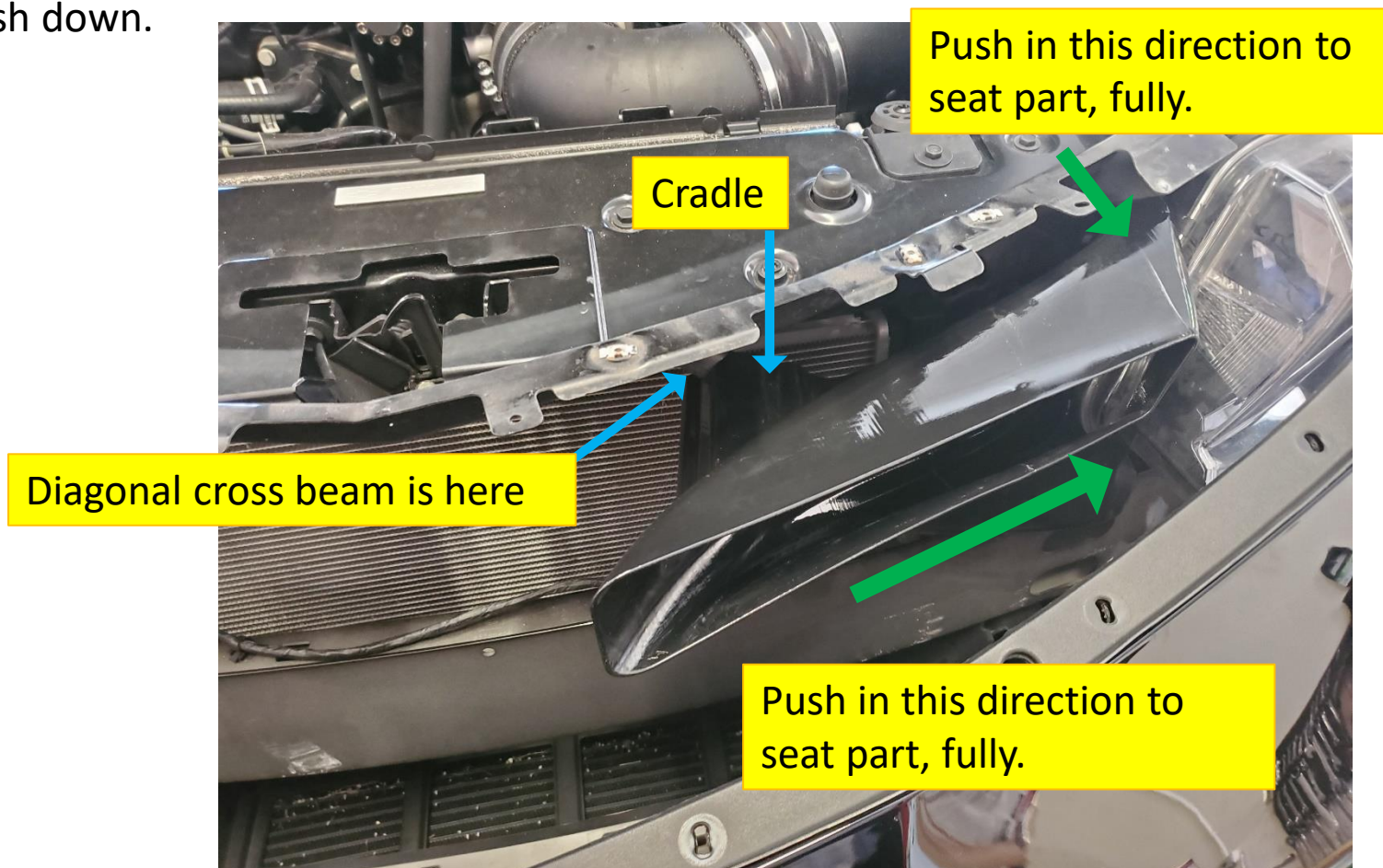
Begin by removing the 3 ribbed clips that hold this plastic piece to the radiator shroud and crash bar.



Use a non-marring pry tool to assist you.

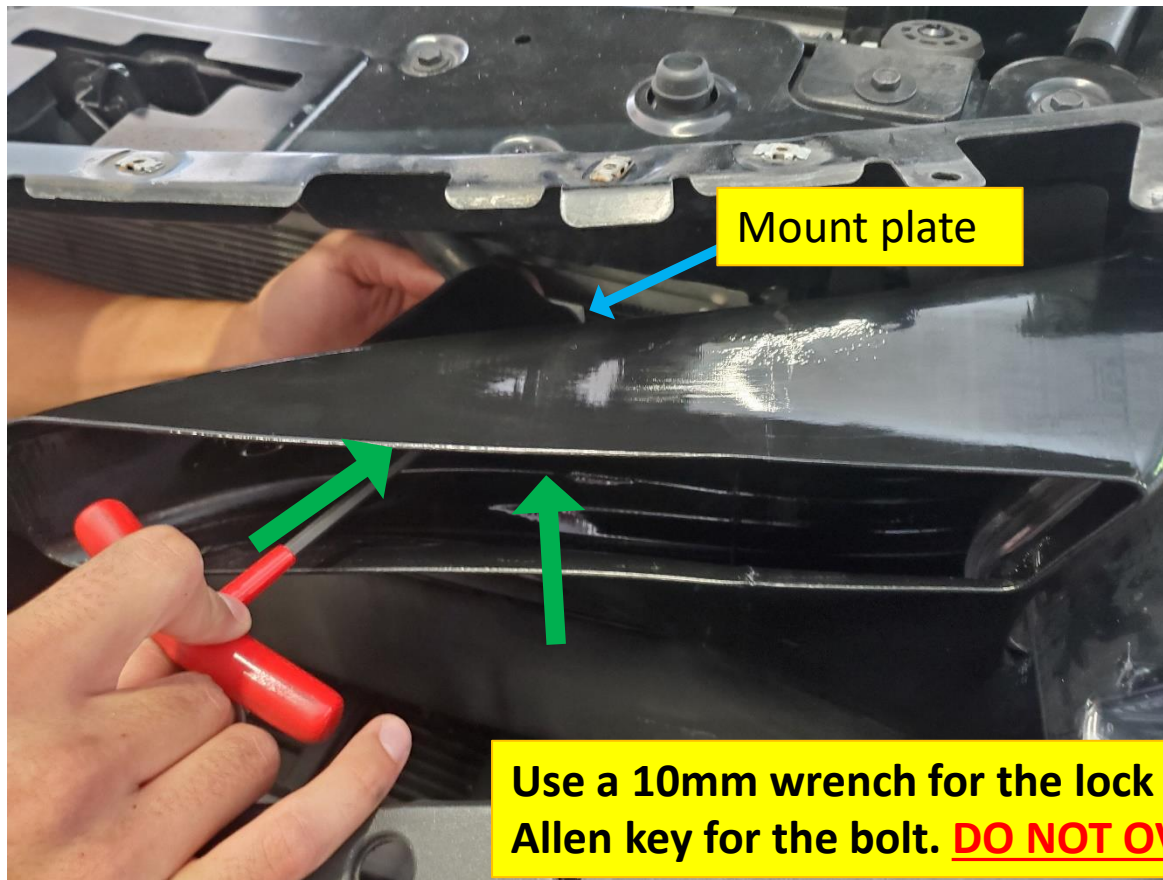
Stock Component Removal

The Big Mouth is meant to be tucked as shown below. Ensure that the cradle mounting region grips the diagonal crossbeam. Push the rightmost area up against the headlight and push down.



Big Mouth Installation

Place the mount plate behind the crossbeam and insert the 65mm bolt through the right-side hole. Spin the nut on by hand, do not tighten yet. Insert the 100mm bolt in the passenger side hole and begin tightening both nuts in an alternating pattern, **SNUG IS ENOUGH.**



Finalize

Re-install the bumper the same way it was removed and ENJOY!

