

# USER MANUAL



Thank you for choosing Better Bathrooms.  
Please read this manual before installing your product  
and keep for future reference.

**better  
bathrooms**

Solid surface Oval Basin- Opal    OPALMW500    Solid Surface Deep Basin- Jasper    JASPMW400



Solid Surface Pedestal Basin-Ruby    RUBYMW40    Solid Surface Gloss Round Basin- Jade    JADEMW420



Solid Surface Oval basin- Almas    ALMAMW560



- **Single-person assembly**
- **Tools required**
- **We always recommend using professional tradespeople to install your product**

V1\_11.02.25

# Congratulations on your purchase

*And welcome to our growing gang of savvy shoppers*

We're on a mission to bring you extraordinary bathroom products, for less. From modern to traditional style ceramics, plus the gorgeous fixtures, fittings and furniture to match. So, you can fall in love with your space every single day.

As one of the UK's largest independent bathroom stores, we've received countless awards; including the National Business Awards UK, the Digital Entrepreneur Awards and being placed on The Sunday Times Fast Track 100.

We hope your new product goes above and beyond your expectations. However, should any problems occur, please:

- log in to your account and contact our customer services team via your self-serve portal – [betterbathrooms.com/CustomerAccount/Login](https://betterbathrooms.com/CustomerAccount/Login)
- contact us via [betterbathrooms.com/content/contact-us](https://betterbathrooms.com/content/contact-us)

## Important information

- Please read these instructions thoroughly and retain for future reference
- Waste pipe are not supplied.

# Contents

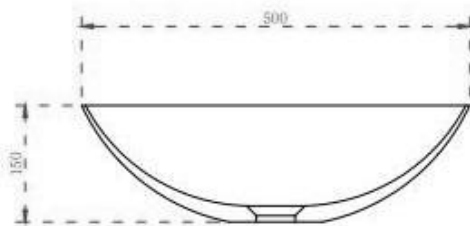
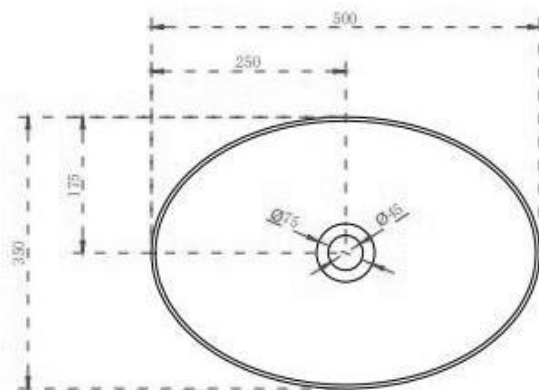
- Component Listing
- Technical Drawing
- Tools Required
- Installation Instructions
- Maintenance, Care & Cleaning

# Component Listing

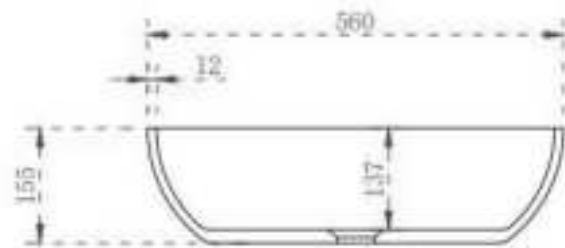
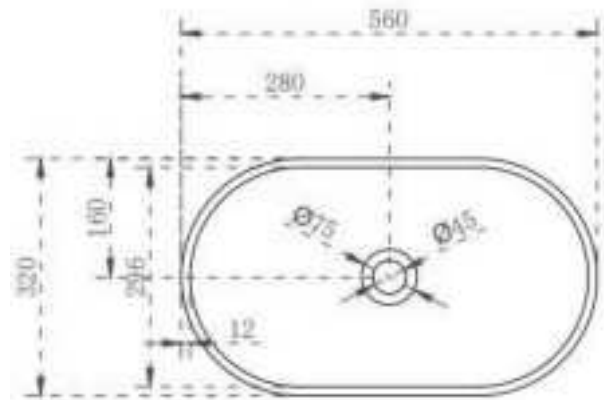
1. Basin
- 2.IM
- 3.Waste
- 4.Sanding sponges

# Technical Drawing

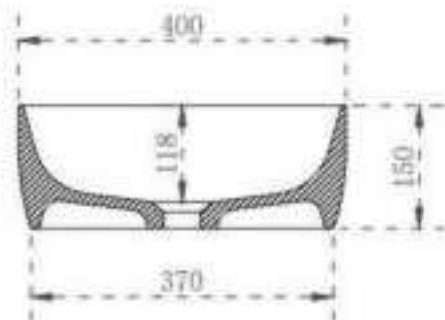
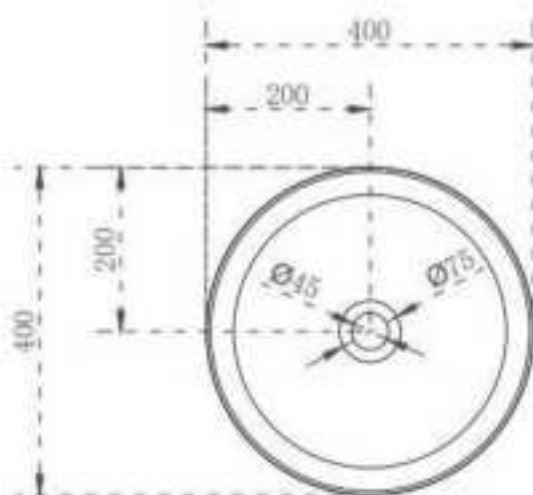
Solid surface Oval Basin- Opal      OPALMW500



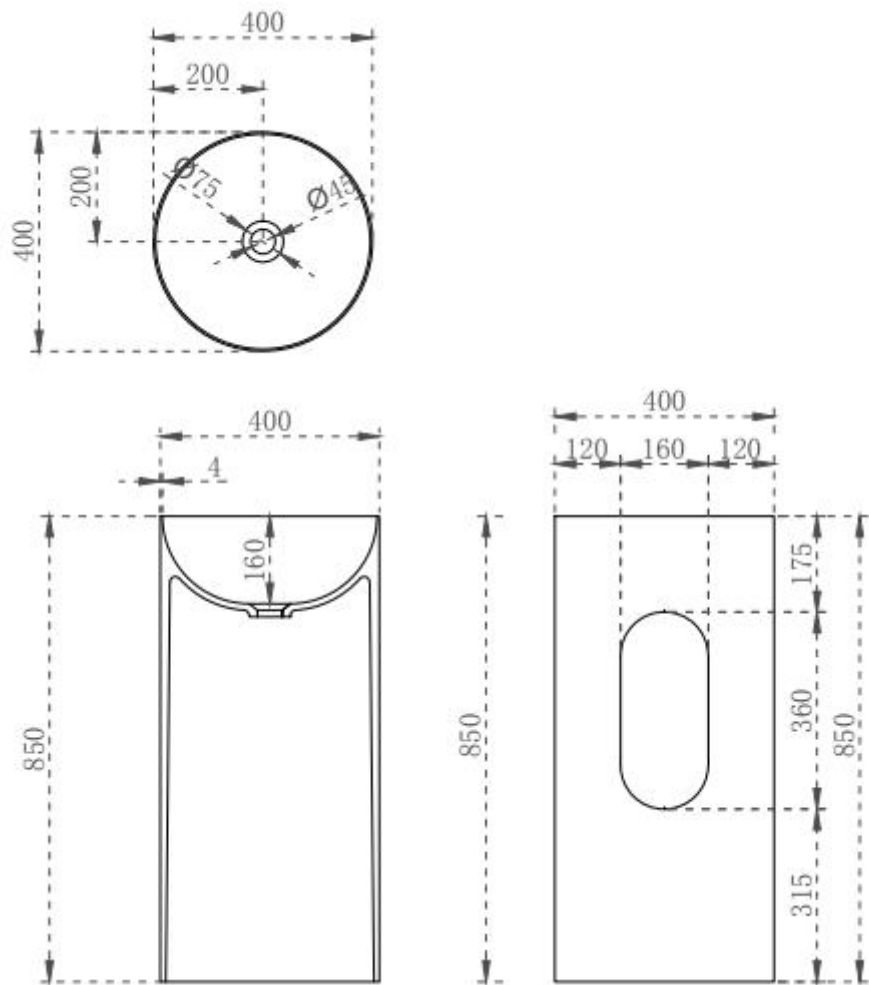
Solid Surface Oval basin- Almas      ALMAMW560



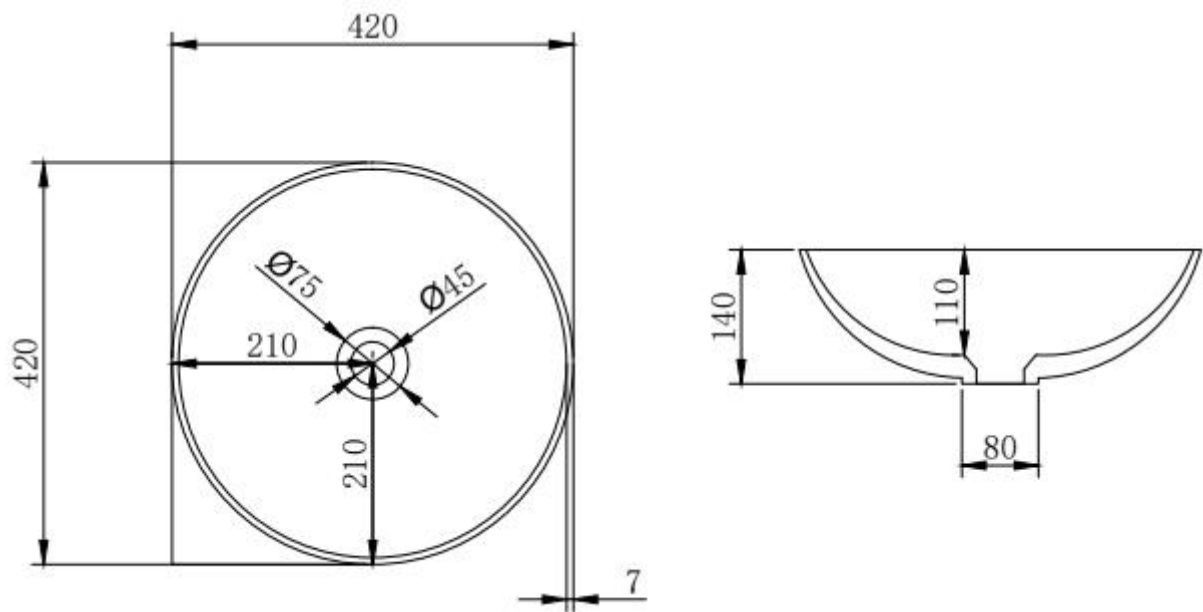
Solid Surface Deep Basin- Jasper      JASPMW400



Solid Surface Pedestal Basin- Ruby RUBYMW40



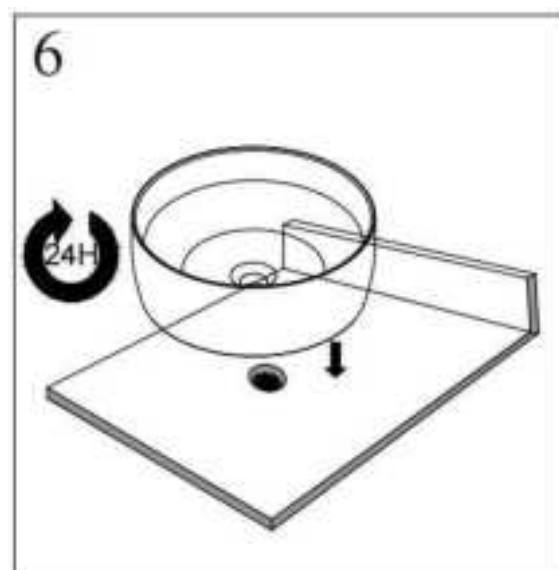
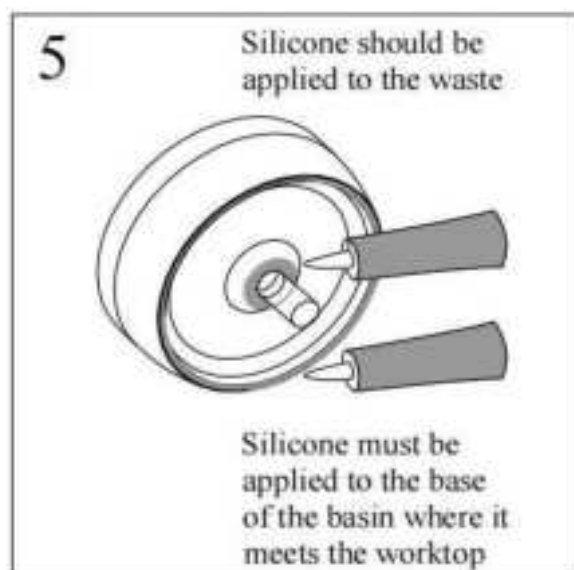
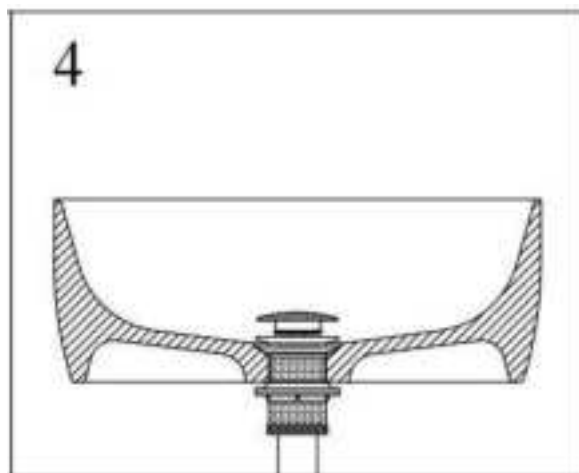
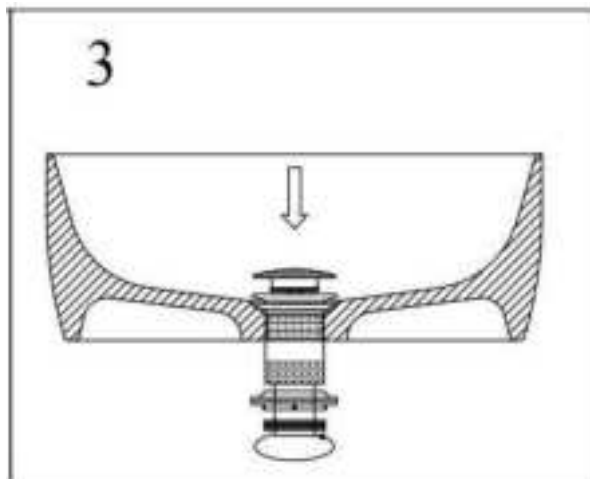
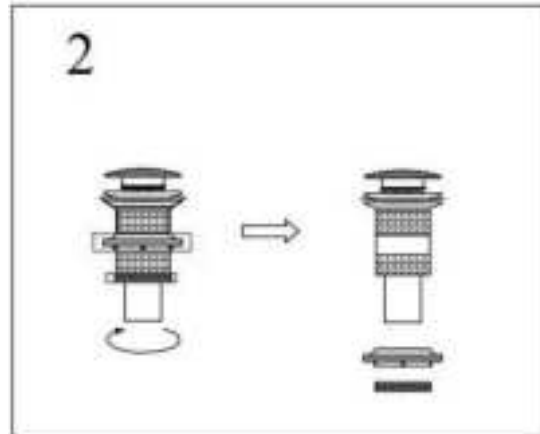
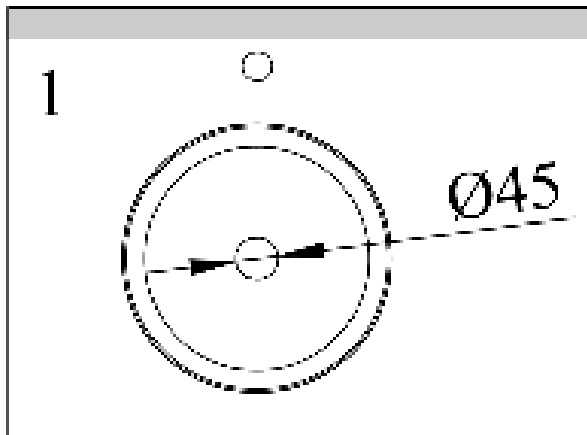
Solid Surface Gloss Round Basin- Jade JADEMW420



# Tools Required

Silicone Adhesive

## Installation Instructions



# Maintenance, Care & Cleaning

## Maintenance and Cleaning Instructions

1. For regular cleaning of both Glossy or Matte finishes, we recommend using widely available cleaning products. The Matte finish may occasionally require a mildly abrasive product.

2. Wipe surface with a soft cloth after each use.

To use a mild cleaning product.

For more stubborn stains, use a mildly abrasive cream cleanser.

## 3. Stubborn Stains, Scratches, and Damaged Surfaces

To repair/remove stubborn stains, scratches, smudges, and scuffs:

1) Use water to remove dirt and dust from the surface.

2) Use 800 grit sandpaper and sand lightly in small circular motions.

3) Follow with 1200 grit sandpaper (finer-grit) sanding lightly in small circular motions until smooth.

4) Dry with a towel.

5) For the Glossy finish, polish the surface with a cloth and a polishing compound for automobiles, such as 3M Extra Cut Compound.

## Care Instructions

Wipe surface with a soft cloth after each use.

To use a mild cleaning product.

For more stubborn stains, use a mildly abrasive cream cleanser.

### For more information

- visit [betterbathrooms.com](http://betterbathrooms.com)
- email [customerservices@buyitdirect.co.uk](mailto:customerservices@buyitdirect.co.uk)
- call 0330 390 3062
- write to Trident Business Park, Neptune Way, Huddersfield, HD2 1UA

**better  
bathrooms**

Part of the BuyItDirect Group