

# User Manual

**M27**



**AZDOME**

[www.azdome.com](http://www.azdome.com)

Enjoy Your Smart Driving



---

## •» Table of Contents

---

1. Customer Service.....	4
2. Introduction .....	5
3. In The Box.....	6
4. Specification.....	7
5. Product Diagram .....	9
6. Buttons And Functions.....	11
7. Installation .....	12
8. Using AZDOME Dashcam.....	15
9. Playing Video Files Using AZDOME Dash Cam.....	17
10. Playing Video Files Using Your Smartphone .....	18
11. Playing Video Files Using Your Computer.....	24
12. Menu.....	26
13. Firmware Update.....	31
14. FAQ .....	32
15. Notice.....	34

## •» 1. Customer Service



Defective or damaged item?

Inaccurate description?

Missing parts or accessories?

Performance or quality not adequate?

Wrong item was sent?



**service@azdome.hk**

Response in just 12 hours

Contact us before returning the item.  
We will help you resolve any issue asap.



Scan this QR code using  
the WhatsApp camera to  
add me on WhatsApp



WhatsApp Contact

---

## •» 2. Introduction

---

Thank you for purchasing this AZDOME dashcam.

This instruction manual contains information on how to operate your dash cam. Before using your dashcam, we recommend that you read through this manual to ensure correct usage.

To improve the performance of the product, the contents of this manual are subject to change without prior notice.



### **Note:**

1. A U3 type microSD card (Not included) is required to use this Dash Cam. For best results, we recommend using our AZDOME branded SD cards with your Dash Cam.
2. Be sure to format your microSD card with your dash cam for the first time use.
2. Please ALWAYS connect with power when using. As it is built in Super Capacitor (Only has a 1mAh Lithium Metal Battery used to memorize time).



[service@azdome.hk](mailto:service@azdome.hk)

**Scan QR code to download Manual**



### » 3. In The Box

Check the box for each of the following items before installing the dash cam.



Dash camera ×1



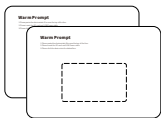
Sticky mount ×1



Double-sided  
tape ×1



Car charger  
(3.5M/12ft) ×1



Electrostatic films  
for front cam x2



Cable clips x5  
Pry tool x1



User manual x 1



#### Note:

1. A U3 type microSD card (Not included) is required to use this Dash Cam.
2. To improve the performance of the product, the contents of this manual are subject to change without prior notice.

## •» 4. Specification

Model Name	M27
Screen Size	3 Inch
Aperture	F=1.8
Color	Black
Language	English / Deutsch / Français / Español / Italiano / 日本語 / 简体中文 / 繁體中文 / Русский / ไทย
Video Format	MOV
Photo Format	JPG
Video Code	H.264
Video Resolution /Frame Rate	2K (2560x1440@30FPS) 1296P (2304x1296 @30FPS) FHD (1920x1080 @30FPS) Full HD (1280x720 @30FPS)
G-sensor	Built-in 3-Axis Acceleration Sensor
Loop Recording	Support

Timelapse Record	Support (Fast Video Playback)
Wi-Fi / Application	Support, AZDOME Application
Parking Mode	Support (ONLY works when the dash cam is connected to 3-Lead Hardwire Kit)
Memory	Max support 128GB (Class 10, U3 Speed. Not included)
Microphone	Built-in
Speaker	Built-in
Battery	Built-in Super Capacitor (Only has a 1 mAh Lithium Metal Battery used to memorize time)
Power Interface	5V/1.5A
Working Temperature	-20°C to 70°C (-4°F to 158°F)

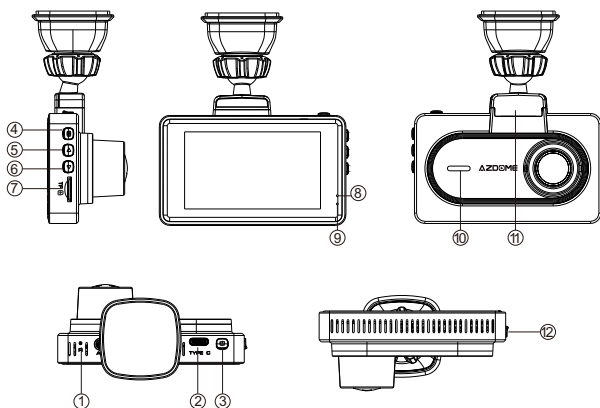


**Note:**

1. Please only use AZDOME car charger in this package.
2. Please ALWAYS connect with power when using. As it is built in Super Capacitor (Only has a 1mAh Lithium Metal Battery used to memorize time).
3. We recommend using AZDOME SD cards for optimal performance. Using third party or unqualified SD cards can affect dashcam's performance and in some cases, force the dashcam to reboot randomly during recording.



## •» 5. Product Diagram



① Reset Hole

② USB charging port

③ Power / OK

④ Menu

⑤ Up

⑥ Down

⑦ microSD card slot

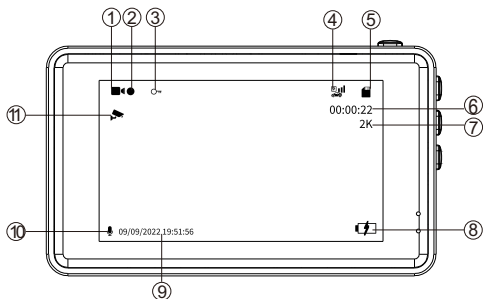
⑧ Power LED Light

⑨ Recording LED Light

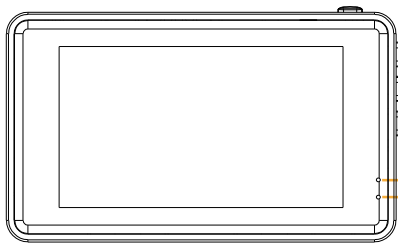
⑩ Speaker

⑪ Mounting bracket

⑫ Ventilation Hole



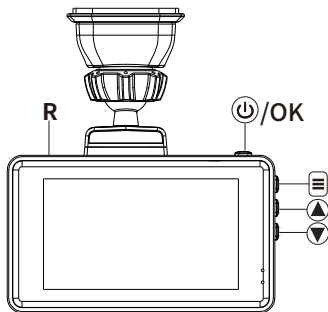
- ① Video Mode      ② Recording Indicator      ③ Lock Video
- ④ G-sensor      ⑤ microSD Card Indicator      ⑥ Loop Recording Timer
- ⑦ Video Resolution      ⑧ Power Indicator      ⑨ Date/Time
- ⑩ Record Audio      ⑪ Parking Mode



No Blue: The camera is ON but NOT Recording  
 Blinks Blue: The camera is ON and Recording

No Red: The camera is OFF  
 Solid Red: The camera is ON

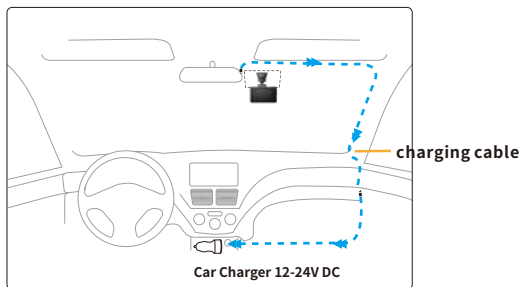
## •» 6. Buttons And Functions



Key	Functions
⏻/OK	<ol style="list-style-type: none"> <li>1. Press Once while the camera is OFF - to Turn ON the camera</li> <li>2. LONG PRESS for 3-Seconds while the camera is ON - to Turn OFF the camera</li> </ol> <ol style="list-style-type: none"> <li>1. Press Once - to Start/Stop Video Recording</li> <li>2. Press Once - to Play/Pause Video while in Playback Mode</li> <li>3. Press Once - to Enter / Confirm Specific Settings while in Menu Settings</li> </ol>
☰	<ol style="list-style-type: none"> <li>1. Press Once - to enter/exit menu settings</li> <li>2. LONG PRESS for 2-Seconds - to switch Video Mode /Photo Mode / Play Mode</li> </ol>
▲	<ol style="list-style-type: none"> <li>1. Press Once - to shift camera display mode. Note: Rear camera is not included in the package.</li> <li>2. LONG PRESS for 2-Seconds - to Turn ON WiFi, this will turn ON WiFi signals from the dash cam.</li> </ol>
▼	<ol style="list-style-type: none"> <li>1. Press Once - to Turn OFF/ON audio recording</li> <li>2. LONG PRESS for 2-Seconds - to Lock the Current Loop Cycle Video File while Video is being recorded</li> </ol>
<b>R</b>	Reboot the device and default settings

## •» 7. Installation

Install the front camera at the top of the front windshield. Remove any foreign matter and clean and dry the windshield before installation.



1. Insert a suitable microSD card (Class 10, U3, minimum 48/Mbps) into the Dash Cam, taking care that the gold contacts are facing towards the LCD screen side of the Dash Cam. Push the memory card until it clicks into place. Format your SD card for the first time use.



Note:

- Use the edge of a small coin (or similar object) to push the memory card in place if required. Take care that card has 'clicked' into place, a second push inwards will release the memory card.
- For best results, we recommend using AZDOME branded SD cards.
- Do not remove or insert the memory card when the Dash Cam is turned on. This may damage the memory card, or the recordings within.

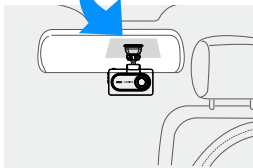
2. Correctly connect the bracket and M27 dash cam. Do NOT rotate to remove this mount. The rotating structural part is only used to adjust this angle.



3. Stick the electrostatic film on your windshield. Peel back the blue cover layer to expose the adhesive surface, ready to mount on your windscreen. Firmly place the mount to the electrostatic film.



Remove the film of the Static Clings Sticker



4. Connect the charging cable to the Type-C/USB port of the dash cam. Use the pry tool to lift the edges of the windshield trim/molding and tuck in the power cord.

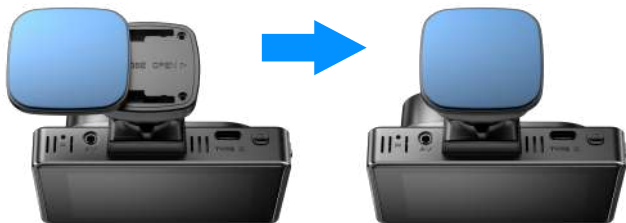
5. Adjust the angle of the lens by the bracket of the front camera. We recommend pointing the lens slightly downwards ( $\approx 10^\circ$  below horizontal), so as to record video with a 6:4 road to background ratio.

6. Turn on the engine. The dashcam will power up and start recording. Video files are stored on the microSD card. When the microSD card fills up, the newest video files will start to replace the oldest video files (called loop recording) – so you will always have the most recent video files.

## **Remove or mount the top adhesive attachment**

To attach the mount, align the pins on the mount with the holes on the adhesive attachment and slide firmly to the right until you hear the pieces click into place. To remove the top, simply do the reverse, slide it to the left until you can lift it off of the mounting pins.

Ensure the windshield is free of grease and dirt before mounting; if necessary, clean with a warm, clean cloth. Ensure that the Mount and Dash Cam do not obstruct the driver's view.



---

## •» 8. Using AZDOME Dash Cam

---

The camera is designed to power up and record automatically when it receives power. Then saves the video record and turns off automatically when the car shuts off.

### **1. Auto Power ON/OFF:**

- ① Plug car charger to cigarette lighter socket.
- ② When the car engine is on, dash cam will turn ON and start recording automatically.

When the car key is turned to LOCK position, dash cam automatically saves the recording and turns OFF.

### **2. Manual Power ON/OFF**

Manually Turn ON: Press the power button once.

Manually Turn OFF: Press and hold the power button for at least 2 seconds.



- 1. A U3 type microSD card (Not included) is required to use this Dash Cam. Be sure to format your microSD card with your dash cam for the first time use.
- 2. Please ALWAYS connect with power when using. As it is built in Super Capacitor (Only has a 1mAh Lithium Metal Battery used to memorize time).
- 2. Some trucks/cars' s 12V cigarette outlet is always HOT, which means it provides constant power even when the car is turned off and locked. If this is the case for your vehicle, then the auto ON/OFF feature will not work. And if you leave the camera continuously recording when the car is turned off, then it will drain your car/truck' s battery and you might not have enough power to start your car for next time. To Remedy this situation, you can do one of the two options:

- ①Hardwire your dash cam to your car' s fuse box with AZDOME 3-Lead Auto Trigger Hardwire Kit.
- ②Change the connection in the fuse box for your 12V outlet to socket which only supplies power when car key is turned to ACC or ON position.



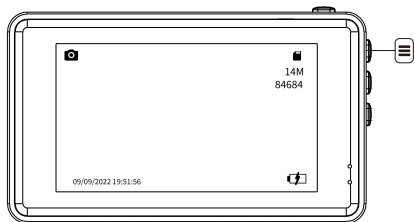
## •» 9. Playing Video Files Using AZDOME Dash Cam

First press once the '⏻/OK' to stop video recording. LONG PRESS '☰', for 2-Seconds - to switch Video Mode /Photo Mode / Playback Mode.

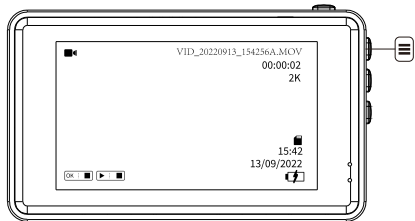
### 1. VIDEO MODE



### 2. PHOTO MODE



### 3. PLAYBACK MODE



In the Playback Mode:  
you can press once the '⏻/OK' button to play/stop video.  
you can press once the '☰' button to delete or protect related files.

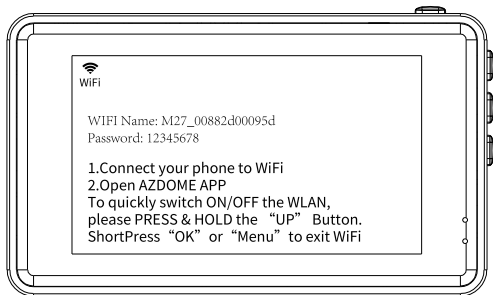
## » 10. Playing Video Files Using Your Smartphone

### Check real-time video using your smartphone

1. Search for the AZDOME app in the Google Play Store or Apple App Store and install it on your smartphone.



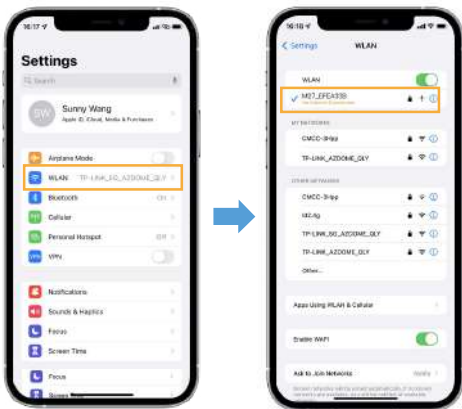
2. Turn on WiFi of the dash cam: Long press Down Button for two seconds to turn on the WiFi Mode.



3. Turn on WiFi of your phone and connect: Go to Phone's Settings > WiFi > Select WiFi of the dashcam. After it's connected to the WiFi, it will say 'No Internet Connection' which was normal. Because dash cam WiFi is ONLY for video/photo transfer function, NOT made to broadcast footage over the cloud or internet, please ignore the prompt.

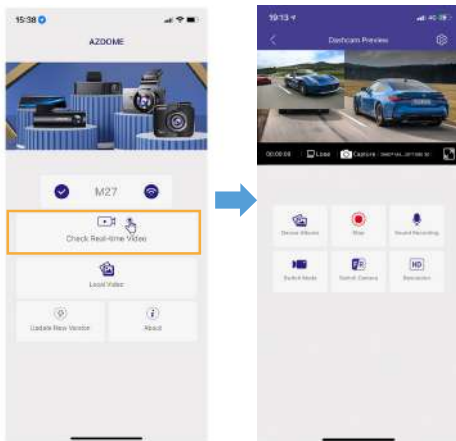
**WiFi Name SSID: M27\_\*\*\*\*\***

**Default PASSWORD: 12345678**



#### 4. Open the AZDOME App

Now you can view in real-time the video currently being recorded by connecting your smartphone to the dashcam via Wi-Fi Direct.

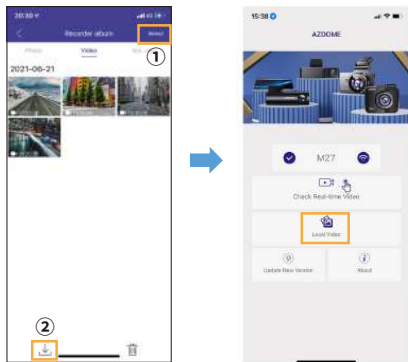


## Download the video files into your smartphone

1. Go to Dashcam Preview interface. Please STOP recording first, then press the 'Device Album' to get Photo, Video, Emergency files.



2. Select the video files to download into your phone, then you can find these downloaded video files in APP original interface menu named 'Local Video'. However, it will take a bit of time to download one video file.





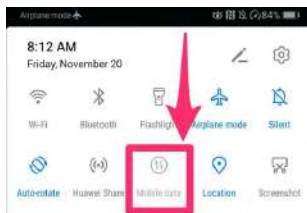
## Note:

1. You can't operate the dash cam when your phone is connected to WiFi.
2. WiFi Direct lets you directly connect your smartphone to your dash cam via WiFi within a range of 10FT.

## The app won't show the live video on your phone. It only shows a picture of the beach?

The cellular data will cause the live video not to be viewed. If the APP won't show the live video, please disable the 'AZDOME' cellular data of your phone. Sure that the Local Network of the 'AZDOME' is turned on.

- ① For Latest iOS System: Setting→AZDOME→Click 'Wireless Data' → Select 'WLAN' .
- ② For Older iOS System: Setting→AZDOME→Disable the 'Cellular Data' .



## What is a WiFi Feature?

The WiFi feature has been designed so you can pair your dash camera wirelessly with your smartphone and access your recording instantly from the dash cam. Here you can view, download and share your videos easily with your friends and family. Just like how you would connect your Bluetooth speaker to your smartphone for wireless music play, the same way dash cameras use WiFi signal (instead of a Bluetooth) to pair your smartphone with AZDOME M27.

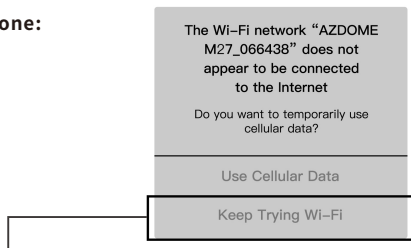
## Can I watch the videos around my car remotely?

NO. AZDOME M27 dash cam is NOT made to broadcast footage over the cloud or internet. It is NOT a cloud or an IP camera and it is NOT meant to do that. You can get live video and footage on AZDOME dash cam's APP as long as you stay within the 10FT range from the dashcam.

## What is the WiFi Range?

The WiFi signal range is about 10FT when there are NO obstructions in the middle. Please NOTE that just like your home WiFi network, you don't have WiFi signal outside your home, the same way, WiFi range is 10FT from this small device.

## For iPhone:

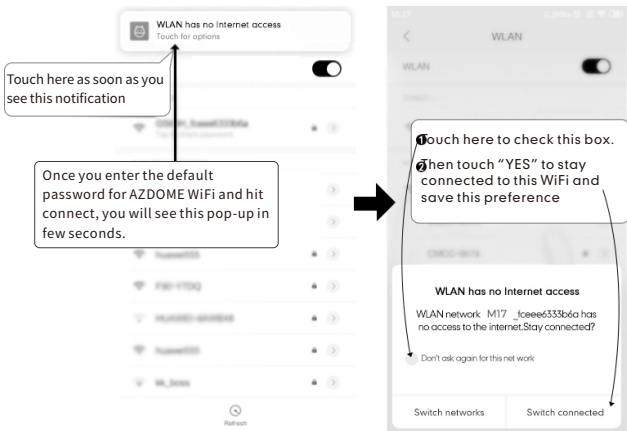


If you get this pop up for your iPhone while using WiFi feature, make sure to tap on 'Keep Trying WiFi'. Otherwise the camera will get disconnected from the WiFi and then you will have to forget the AZDOME WiFi and then start to pair again to make it work again.

## For Android phones:

When installing the AZDOME APP, it will have two pop-up prompts, select 'While using the APP' to allow AZDOME to access this device's location, and select 'Allow' to allow AZDOME to access photos and media on your device.

There is one extra step you will have to take for the first time. Once you connect to the WiFi of M27, it will say 'No Internet'. Which is fine. Wait about 10-15 seconds until you see the below pop up or notification. You just have to tap on the pop up notification that will show up in few seconds to select that you still want to stay connected even though there is NO Internet. Once you select this OK, you are set to go.

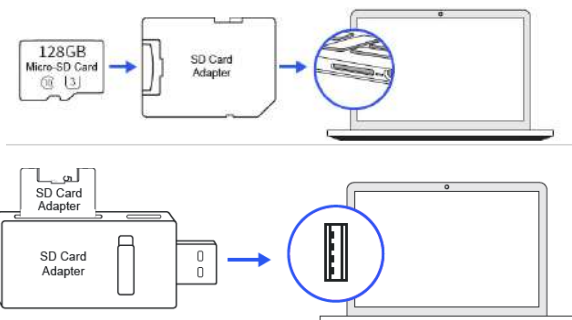


---

## •» 11. Playing Video Files Using Your Computer

---

1. Remove the microSD card from the dashcam.
2. Insert the card into the microSD card reader and connect it to a computer.



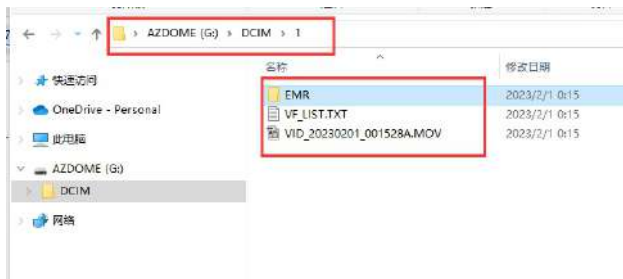
3. You should be able to see drive "D" or "E" or other name depending on the pre-installed hard drives. Once you find the added flash drive, double click it, then you will see a folder named DCMI.

EMR: The video file will be locked so it will NOT be deleted by loop recording function.

Then simply double click on the video to play them.

We recommend VLC Media player. You can get it free at [www.videolan.org](http://www.videolan.org).





File named VID\*\*\*\*\*A = Front camera video file

## » 12. Menu



**Resolution — 2K 2560\*1440(Default)/ 2304\*1296/ FHD 1920\*1080/ HD 1280\*720**

Allow to choose the video resolution.

**Loop Recording — 1min(Default)/ 2mins/ 3mins**

Please select the length of each video clip (1/2/3 minutes) for loop recording. This function enables continuous recording on the dash cam. Please note that when the memory card is full, the dash cam will automatically delete the oldest files to make space for new recordings.

**Audio Recording — On(Default)/Off**

Turn On/Off the microphone for video recording.

**Rear Cam Mirror — On(Default)/Off**

This feature works only for the rear camera image.

On: The image of the rear camera is as same as in the rear mirror , what on the left in reality --> on the right of the dash cam screen.

Off: The rear camera image is as same as what you see, what on the left in reality --> on the left of the dash cam screen.

Note: Rear camera is not included in the package.

## 24HR Parking Mode — Off(Default)

To ensure proper functionality, this function requires the installation of a Type-C 3-Lead Hardwire Kit and an output current of at least 2.5A. Once these requirements are met, select the parking mode which offers two options to choose from.



### **Note:**

AZDOME's custom-designed **Type-C 3-Lead Hardwire Kit** is required to use this new feature. Not included in the packaging,  
on Amazon search: [AZDOME Type-C 3-Lead Hardwire Kit](#)

### **\*Collision wake-up Parking Mode:**

1. When you turn OFF the car's engine and turn the key to the lock position. Then the camera will STOP the continuous video recording and it will go into the impact detection mode and the camera will turn OFF.
2. Now while the camera stays in impact detection mode, if someone hits your car and if the impact reaches the set G-Sensor level, then the camera will turn ON > then it will start to record 1-min continuous video, save & lock that video in EMR folder > then the camera will turn OFF.
3. Now when you start your car for the next time, the camera will automatically go back into normal video mode automatically to start the continuous video recording.

### **\*One shot per second Parking Mode:**

1. When you turn OFF the car's engine and turn the key to the lock position. Then the camera will STOP the continuous video recording and it will go into the timelapse 1fps recording mode automatically.

2. Now while this timelapse is being recorded, if someone hits your car and if the impact reaches the set G-Sensor level, then the camera will start to lock the current looping timelapse video clip, save & lock that video in EMR folder > then return to the timelapse 1fps recording.
3. Now when you start your car for the next time, the camera will automatically STOP the timelapse parking mode. Then it will go into normal video mode automatically to start the continuous video recording.

### **G-Sensor — Off/ High/ Medium(Default)/ Low**

G-sensor is a 3-axis impact gravitational accelerometer, designed to detect physical and gravitational forces on the dash cam. Once G-sensor has been triggered due to physical or gravitational impact force on the camera, the current video file will be locked as an emergency file so it won't be deleted by loop cycle function. The higher the G-Sensor sensitivity is, the less force will be needed to trigger automatic file protection.

### **Exposure —-3.0/ -2.0/ -1.0/ +0.0(Default)/ +1.0/ +2.0/ +3.0**

To adjust video exposure setting for either brighter or darker video according to your preference.

### **Video Stamp — Off/On(Default)**

Turn On/Off the Time Stamp / LOGO Stamp shown on recorded files.

### **WiFi— Off(default )/On**

Turn On/Off the WiFi of the dash cam.

WiFi Name SSID: M27\_\*\*\*\*\*

Default PASSWORD: 12345678



## Note:

The AZDOME is available for devices running Android 5.0 and higher, or iOS 9.0 and higher. You can't operate the dash cam when your phone is connected to WiFi.

### **Frequency — 50HZ/ 60HZ(Default)**

According to the power supply specification used in your country.

60HZ-Used in USA, North America

50HZ-Used in Europe, most Asian Countries.

### **Date time**

Adjust the time & date as required.

Note: Time and date settings will be overwritten upon satellite connection.

### **Data Format — mm/dd/yyyy(Default), dd/mm/yyyy, yyyy/mm/dd**

Allows you to set the format of the date finally displayed.

### **Language — Multilingual, English(Default)**

Allow to choose your desired language for dash-cam system.

### **Screen Saver — Off/ 1(Default)/3/5 minutes**

**Off:** It will make the screen always stay ON.

**1/3/5 Minutes:** It will shut down the screen after 1/3/5 minutes without any interaction. With the screen off, recording will continue as normal. Press the button to re-open the screen.

## **Car License Plate**

This feature will allow you to insert custom vehicle ID or Driver ID to be stamped on video.

## **Prompt tone — On(default )/Off**

To switch on/ off the key tone.

## **Speaker Volume— Low/Medium(default )/High**

Adjust the volume of the internal speaker.

## **Storage Info**

Storage information of memory card can be found here.

## **Format**

The formatting process will make sure that the card's file system format is optimized for the camera.

Note: For stable performance, it is recommended that you format the memory card every 1-2 months.

## **Reset Setup**

Reset the Dash Cam to default settings. Your recordings will not be affected.

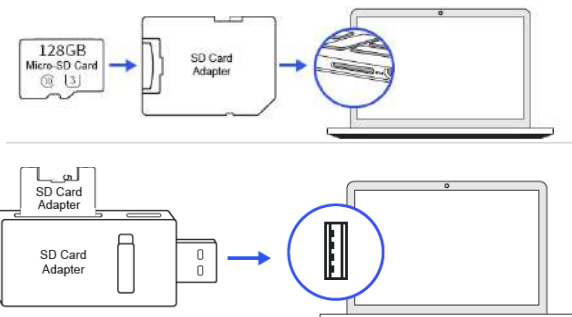
## **Version**

To check the current firmware in the dash cam. You'll need this necessary information to check if newer version firmware is available to update.

On the computer visit the AZDOME website ([www.azdomes.com](http://www.azdomes.com) > **Support** > **Download**) to check for M27 Firmware Upgrade Guide.

## » 13. Firmware Update

1. Remove the microSD card from the dashcam.
2. Insert the card into the microSD card reader and connect it to a computer.



3. Download the latest M27 Firmware from [www.azdomes.com](http://www.azdomes.com) > **Support** > **Downloads** on your computer.

4. Unzip the downloaded firmware (Zip file) and copy the 'JL\_AC5X.bfu' firmware file to the root directory of microSD card.

5. Connect the camera to the car charger. Press the POWER button to start the firmware update process. You should see the upgrade progress bar which means your AZDOME M27 dash camera is updating the new firmware. Please NOTE:

The firmware update may take up to 1 or 2 mins. So please be patient. Make sure the POWER does NOT get disconnected while the firmware is being updated. Once the firmware is updated, the camera will turn ON automatically.

- 6 After the update is completed, make sure to format the memory card.

7. You can now check the latest firmware version by going into the camera's menu> Version.

---

## •» 14. FAQ

---

### **Q1: Video Image is blurred?**

To prepare the windshield for use, follow these steps: remove the protective lens film, clean the lens thoroughly, and ensure that there is no grease, dirt or debris on the windshield.

### **Q2: Camera gets HOT?**

It is normal for your camera to become slightly warm while in use, especially when recording high-speed videos. The dash cam may reach temperatures of up to 158°F/70°C, which is within the acceptable range.

### **Q3: My dash cam has no power, but it works on my computer?**

. The issue is with the cigarette power cable which seems to be malfunctioning. To resolve this, check the fuse in the car power cable plug. If you find that the fuse is blown, inspect the power cable for any damage that may have caused it.

### **Q4: Video Files cannot be played on my computer?**

If you don't have the appropriate playback software installed, your PC may not be able to play the video files from the Dash Cam as they are in MOV format.

### **Q5: Video has no sound?**

Make sure that the "Audio Recording" setting is enabled. To mute the built-in microphone while recording a video, simply press the DOWN button once.





---

## •» 15. Notice

---

 This product complies with the radio interface requirements of the European Community.

 This symbol means the product must not be discarded as household waste, and should be delivered to an appropriate and recycling helps protect natural resources, human health and the environment. For more information on disposal and recycling of this product, contact your local municipality, disposal service, or the shop where you bought this product.

 Changes or modifications not expressly approved by the party responsible for compliance could void the user's authority to operate the equipment. This equipment has been tested and found to comply with the limits for a Class B digital device, pursuant to Part 15 of the FCC Rules. These limits are designed to provide reasonable protection against harmful interference in a residential installation. This equipment generates, uses and can radiate radio frequency energy and, if not installed and used in accordance with the instructions, may cause harmful interference to radio communications. However, there is no guarantee that interference will not occur in a particular installation.

If this equipment does cause harmful interference to radio or television reception, which can be determined by turning the equipment off and on, the user is encouraged to try to correct the interference by one or more of the following measures:

- Reorient or relocate the receiving antenna.
- Increase the separation between the equipment and receiver.
- Connect the equipment into an outlet on a circuit different from that to which the receiver is connected.
- Consult the dealer or an experienced radio/TV technician for help.

This device complies with Part 15 of the FCC Rules.

Operation is subject to the following two conditions: (1) this device may not cause harmful interference, and (2) this device must accept any interference received, including interference that may cause undesired operation.

This equipment complies with FCC radiation exposure limits set forth for an uncontrolled environment. This equipment should be installed and operated with a minimum distance of 20cm between the radiator & your body. This transmitter must not be co-located or operating in conjunction with any other antenna or transmitter.



Apple logo & App Store are trademarks of Apple Inc., Google logo and Google Play are trademarks of Google Inc.

 **service@azdome.hk**

Response in just 12 hours



WhatsApp Contact

Scan this QR code using the WhatsApp  
camera to add me on WhatsApp

<b>Product</b>	Car Dashcam
<b>Manufacturer</b>	Dong Guan KAKA Electronic Technology Co., Ltd.
<b>Address</b>	No.395,HuanshiEast Road Shitanpu Tangxia Town Dongguan CN. 518000
<b>Product Warranty</b>	One-Year Limited Warranty
<b>Customer Support</b>	service@azdome.hk

[www.azdomes.com](http://www.azdomes.com)



FCC ID: 2ASWVM27