



5-587.8

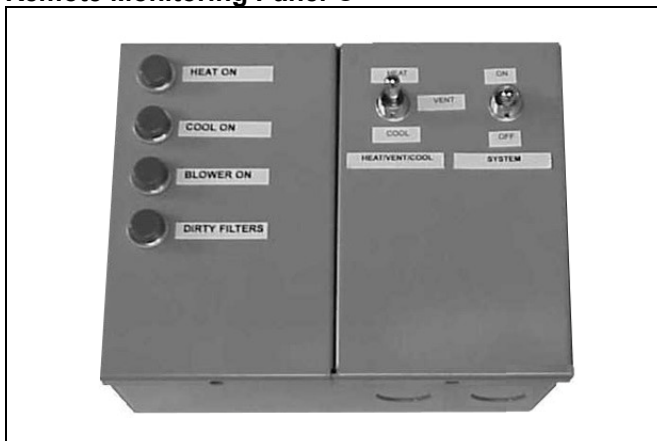
5H0763520000

March, 2024

## INSTALLATION INSTRUCTIONS & SUBMITTAL DATA

### Remote Monitoring Panel indirect gas-fired heating & make-up air units model series "D", "H", "I", & "O"

#### Remote Monitoring Panel ①



① Example panel shown. Actual panel may be configured differently.



### WARNING

1. Disconnect power supply before making wiring connections or working on this equipment. Follow all applicable safety procedures to prevent accidental power up. Failure to do so can result in injury or death from electrical shock or moving parts and may cause equipment damage.
2. All appliances must be wired strictly in accordance with wiring diagram furnished with the unit. Any wiring different from the wiring diagram could result in a hazard to persons and property.
3. All wiring must be done with a wiring material having a temperature rating of at least 105°C.

### IMPORTANT

1. The use of this manual is specifically intended for a qualified installation and service agency. All installation and service of these kits must be performed by a qualified installation and service agency.
2. These instructions must be used in conjunction with the Installation and Service Manual originally shipped with the appliance being converted, in addition to any other accompanying component supplier literature.

#### Model Application

The purpose of the remote monitoring panel is to offer control and/or indication of the current operating conditions of a heating/make-up air unit, model series "D", "H", "I", or "O".

#### Remote Panel Components

The standard panel includes two lights ("Heat On" and "Blower On"). Other panels are available with the following options:

- **Indicator Light Tags (panel holds two to five lights):**

Heat On	Cool On
Blower On	Dirty Filters
Power On	
- **Switch Tags (panel holds one to two switches):**

2-Position Switches	3-Position Switches
Day/Night	Heat/Vent/Cool
Occupied/Unoccupied	Summer/Off/Winter
On/Off	Heat/Off/Vent
Heat/Off	On/Off/Auto
High/Low	Day/Off/Night
Summer/Winter	Occupied/Off/Unoccupied
Heat/Cool	
Auto/Off	
- **Other Devices Available:**
  - Maxitrol Electronic Set Point Adjuster – TD121

#### Component Data:

- **Lights:**
  - Red, 24VAC, 60Hz, 1 Watt
- **Switches:**
  - DPDT (2 position) or DPDT-Center Off (3 position)
- **Thermostats:**
  - None
  - Modulating Discharge Air Set Point Adjuster

#### Installation

The remote monitoring panel is to be mounted indoors in an environment free of excessive contaminants such as oil, moisture, and dirt. Mounting holes are provided in the rear of the enclosure for mounting to a wall, terminal box, etc. Conduit entrance knockouts are provided on the sides, bottom, and rear of the enclosure.

# INSTALLATION – REMOTE MONITORING PANEL

## Wiring

Installation of wiring must conform with local building codes, or in the absence of local codes, of the National Electric Code ANSI/ NFPA 70 – Latest Edition. Unit must be electrically grounded in conformance to this code. In Canada, wiring must comply with CSA C22.1, Part 1, Electrical Code.

The remote monitoring panel components are designed to accept the following connections:

- **Lights:**  
3/16" quick connect terminals
- **Switches:**  
1/4" quick connect terminals
- **Maxitrol TD121 Set-Point Adjuster:**  
1/4" quick connect terminals

## Wiring Diagram Selection

- For system units (factory supplied blower), refer to the job specific unit wiring diagram provided with the unit.
- For deviations to these wiring diagrams or the job specific wiring diagrams, consult the factory.

## Remote Panel Dimensions

Figure 2.1 - Remote Panel Dimensions (inches)

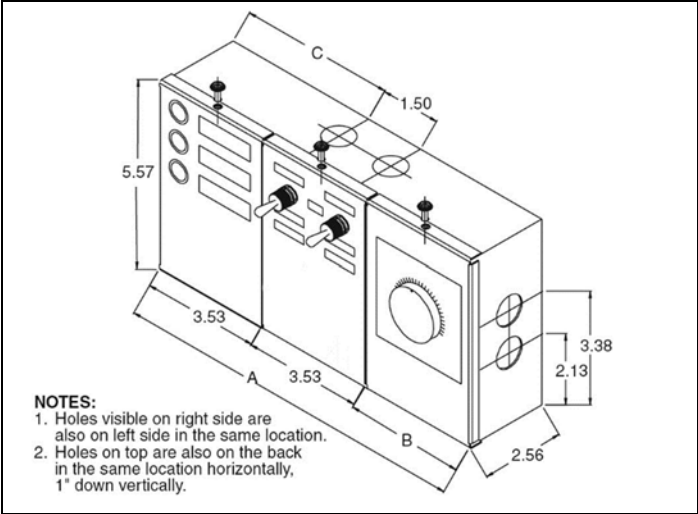


Table 2.1 - Remote Panel Dimensions (inches)

Remote Panel Type	A	B	C
Lights and Switches Only	7.06"	—	2.75"
With Electronic Set Point Adjustor	10.60"	3.53"	4.52"

Modine Manufacturing Company has a continuous product improvement program, it reserves the right to change design and specifications without notice.

