

Outdoor Pan/Tilt Security Wi-Fi Camera

Tapo C530WS

 Starlight Color Night Vision

Person/Pet/
Vehicle Detection

360° Motion
Tracking

Local microSD Storage
(Up to 512 GB)*

works with


 works with
Google Home

3K
5MP



// Highlights

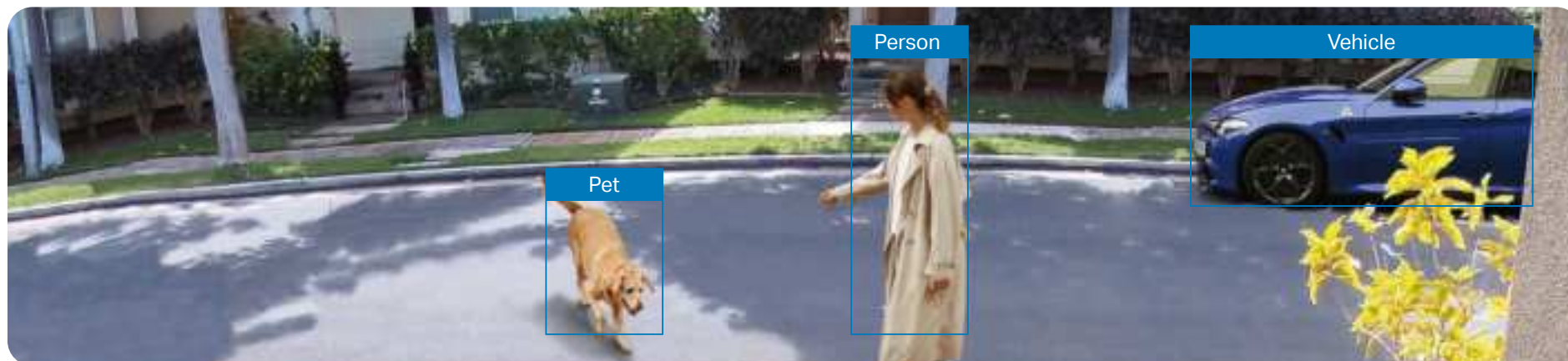
Build to Withstand Water & Dust

The Tapo camera is protected against jets of water and dust with IP66 weatherproof rating. It works well in rain, snow, dust, and heat.



Person/Pet/Vehicle Detection and Notification

Smart AI identifies people, pets, and vehicles, notifying users as needed.



// Features



360° Motion Tracking

Provides 360° horizontal & 130° vertical viewing range, enabling you to focus on more vital areas and eliminate blind spots.



3K 5MP

Now with 2.25 times more pixels than 1080p, providing clearer videos and photos.



Local[†] and Cloud[‡] Storage

Save recorded video on a microSD card (up to 512 GB)[†] without monthly fees, or by using Tapo Care[‡] cloud storage services.



Multiple Installation Options

Use the mounting screws, template and loops^{*} to install on any wall, ceiling or pole for the perfect view.



Starlight Color Night Vision

Equipped with an F1.6 large-aperture lens and starlight sensor, the camera captures more light and has higher photosensitivity, revealing colorful images even without spotlights on.



IP66 Weatherproof

Offers excellent waterproof and dustproof performance for outdoor scenarios.



Customizable Sound and Light Alarm

Records your customized audio as an alarm to extend your usage. Set to trigger a light/sound alarm when detecting activity.



Wired/Wireless Networking

Connect your camera to the network through WiFi or Ethernet for more flexible installation.

[†]microSD card purchased separately. Actual storage capacity depends on the size of the microSD card used.

[‡]Subscribe for cloud storage at <https://www.tapo.com/tapocare/>

^ΔCompatible with Alexa and Google Assistant supported displays. User experience is dependent on the connected device's specifications.

^{*}Mounting loops purchased separately.

For more information, please visit <https://www.tapo.com/>

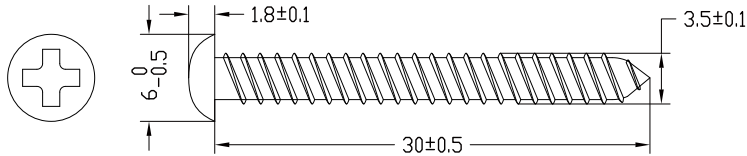
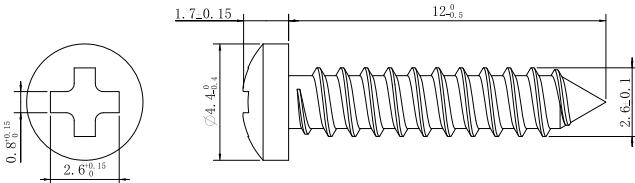
All brands and product names are trademarks or registered trademarks of their respective holders. Specifications are subject to change without notice.

// Specifications

Camera	Image Sensor	1/2.7" Progressive Scan CMOS Starlight Sensor
	Lens	Focal Length: 4 mm Aperture: F1.6 Field of View: 102° (Diagonal), 87° (Horizontal), 45.5° (Vertical)
	Night Vision	850 nm IR LED (98 ft / 29.87 m) Starlight Color Night Vision
	Day/Night Switch	IR-Cut Filter with Auto-Switching
	Lighting	2× Built-in Spotlights
	Interface & Button	1× Ethernet Port 1× RESET Button 1× microSD Card Slot (Up to 512 GB)
	Hub Compatibility	/
Video & Audio	Maximum Resolution	3K 5MP (2880× 1620 px)
	Frame Rate	15/20/25/30 fps (Default 15fps)
	Digital Zoom	None
	Video Compression	H.264
	Live View	Yes

Video & Audio	Image Enhancement	3DNR WDR
	Audio Input & Output	Built-in Microphone and Speaker
	Audio Communication	Two-Way Audio with Noise Cancellation
	Siren Volume	93 dB (Level measured at 4-inch/10-cm distance)
Storage	Local Storage	microSD Card Slot on Camera (Up to 512 GB)
	Cloud Storage	Tapo Care Cloud Storage Services (Subscription required)
Detection & Notification	Sensor	/
	AI Detection	Motion Detection Person Detection Pet Detection Vehicle Detection Line-Crossing Detection Camera Tampering
	Activity Zones	Yes *Only works with Motion Detection.
	Output Notification	System Notification System Notification with Snapshot (Tapo Care Services)
Network	Network Connectivity	Connect via Wi-Fi or Ethernet
	Wireless Connectivity	IEEE 802.11b/g/n/ax, 2.4 GHz Wi-Fi

Network	Transmission Rate	11b: 11 Mbps 11g: 54 Mbps 11n: 72.2 Mbps 11ax: 143.4 Mbps
	Protocol	TCP/IP, DHCP, ICMP, DNS, NTP, HTTPS, TCP, UDP
	Max. Distance Between Hub and Camera/Doorbell	/
	Ethernet Port	1× 10/100 Mbps RJ45 Port on Camera
	RTSP	Yes
	ONVIF	Yes
Security	Security	On-Device Machine Learning 128-bit AES Encryption with SSL/TLS WPA/WPA2-PSK/WPA3
Power	Power Source	9V DC Power Adapter
	Input Voltage	100-240 V, 50/60 Hz
	Output Voltage	9 V, 0.85 A (DC Power)
	DC Power Connector Size	Inside Ø: 2.1 mm Outside Ø: 5.5 mm
	Power Cord Length	3 m
	Typical Power Consumption	3.9 W
	Maximum Power Consumption	7.41 W

General	Smart Integration	Google Assistant, Amazon Alexa
	Weather Resistance	IP66
	Mounting Options	Ceiling-Mounted Wall-Mounted Pole-Mounted (Pole-Mounting loops required but not included)
	Operating Temperature	-30 °C ~ 60 °C (-22 °F ~ 140 °F)
	Storage Temperature	-40 °C ~ 60 °C (-40 °F ~ 140 °F)
	Operating Humidity	10% ~ 90% RH, Non-condensing
	Storage Humidity	0 ~ 90% RH, Non-condensing
	Charging Temperature	/
	Mounting Screw Size	
	Bracket Screw Size	
	Dimensions	4.8 × 4.8 × 3.5 in (121.7 × 123 × 90 mm)

General	Weight	12.2 oz / 347 g
	Package Contents	Tapo C530WS Camera Power Adapter Mounting Anchors Mounting Screws Bracket Screws Mounting Template Mounting Bracket Waterproof Seal Waterproof Cable Attachments Quick Start Guide