

Honeywell Home



T5 Smart Thermostat

Programmable
Thermostat

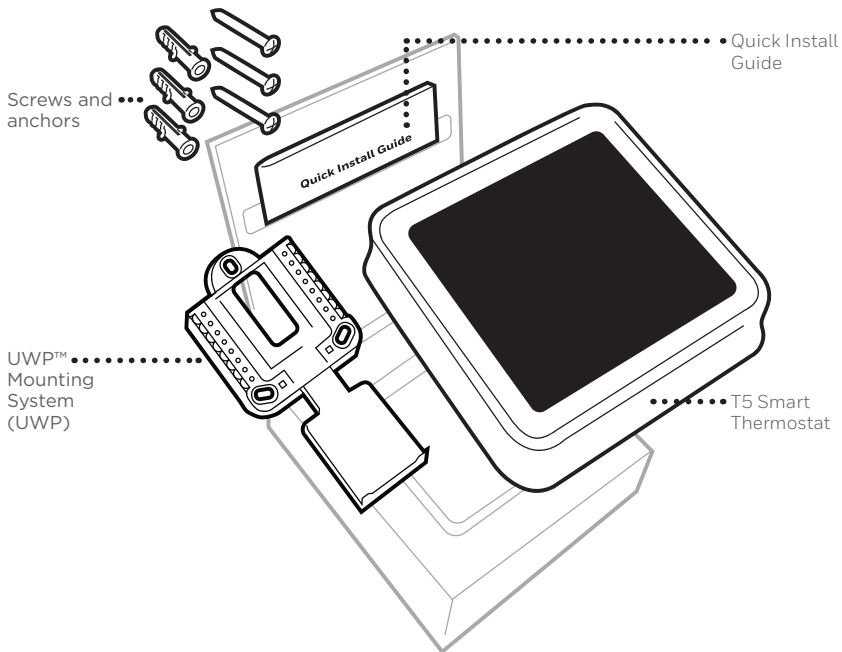
Quick Install Guide



RCHT8610WF,
RCHT8612WF,
RTH8800WF,
Read before installing

For more information visit honeywellhome.com

Included in your box:



Get the most from T5 Smart Thermostat

Multiple programming options that fit your lifestyle:



1. **Location-Based scheduling** – The thermostat uses your smartphone's location to know when you're away, and saves you energy. Through geofence technology, it senses your return and helps make you comfortable upon arrival. You can always manually change your preset Home and Away temperature either on the thermostat or on the Honeywell Home app.
2. **Smart scheduling** – Use a combination of geofencing and time scheduling to fit your busy, active lifestyle.
3. **Time-Based scheduling** – Program your thermostat for one week; each day (each day is a different schedule); Mon-Fri, Sat, Sun; or Mon-Fri, Sat-Sun. All days with four adjustable periods per day.
4. **No scheduling** – Control your comfort manually by adjusting temperature set points only.



Smart Alerts. Push notifications remind you of filter changes and warn you of extreme indoor temperatures.



Smart Response. Learns your heating and cooling system to deliver the optimal temperature at the right time.



Auto Change From Heat to Cool. Automatically determine if your home needs heating or cooling to provide maximum comfort.

Tools you will need:



Phillips screwdriver



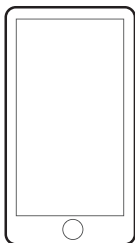
Small flat head screwdriver



Pencil



Level



Smartphone

To install your thermostat and photograph existing wiring.



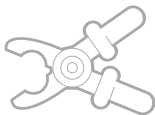
Home Wi-Fi Password



Honeywell Home app

To configure your system and connect to your smartphone.

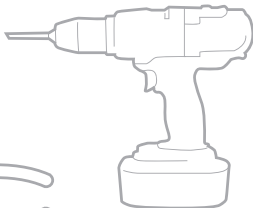
You may need:



Wire stripper



Needle-nose pliers



Drill and
drill bit (7/32 in)

**CAUTION: ELECTRICAL HAZARD**

Can cause electrical shock or equipment damage. Disconnect power before beginning installation.

**CAUTION: EQUIPMENT DAMAGE HAZARD**

Compressor protection is bypassed during testing. To prevent equipment damage, avoid cycling the compressor quickly.

**CAUTION: MERCURY NOTICE**

If this product is replacing a control that contains mercury in a sealed tube, do not place the old control in the trash. Contact your local waste management authority for instructions regarding recycling and proper disposal.

**REQUIRED: 24 VAC POWER (“C” WIRE)****CAUTION: ELECTRONIC WASTE NOTICE**

The product should not be disposed of with other household waste. Check for the nearest authorized collection centers or authorized recyclers. The correct disposal of end-of-life equipment will help prevent potential negative consequences for the environment and human health.

Compatibility

- Compatible with most heating, cooling, and heat pump systems
- Required: 24 VAC power (“C” wire)
- Does not work with electric baseboard heat (120-240V)
- Does not work with millivolt systems
- Does not support input (S terminals) for indoor and outdoor sensors
- Does not support relay (U terminals) for ventilation
- Android or iOS smartphone, tablet, or device

For help, contact:


WEB honeywellhome.com/support

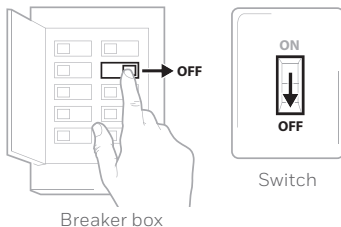
PHONE 1-800-633-3991

SOCIAL Twitter: @Honeywell_Home, Facebook: Honeywell Home

Removing your old thermostat

1 Turn power OFF

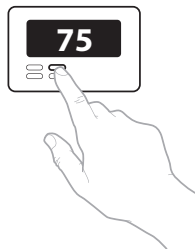
 To protect yourself and your equipment, Turn off the power at the breaker box or switch that controls your heating/cooling system.



2 Check that your system is off

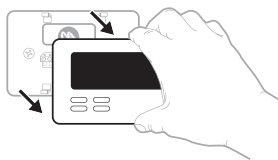
Change the temperature on your old thermostat. If you don't hear the system turn on within 5 minutes, the power is off.


Note: If you have a digital thermostat that has a blank display, skip this step.



3 Remove your old thermostat from the wall plate

On most thermostats, you can take off the thermostat by grasping and gently pulling. Some thermostats may have screws, buttons, or clasps.



 **Do not remove any wires from your thermostat at this time!**

4 Make sure there are no 120/240V wires

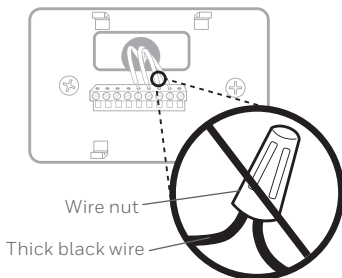


Do you have thick black wires with wire nuts?

Is your thermostat 120V or higher?

If you answered yes to either of these questions, you have a line voltage system and the thermostat will not work.

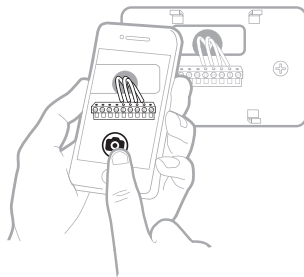
If you are unsure visit:
honeywellhome.com



5 Take a picture of how your wiring looks right now

Be sure to include the letters next to the terminals where the wires are inserted. This will be a helpful reference when wiring your thermostat.

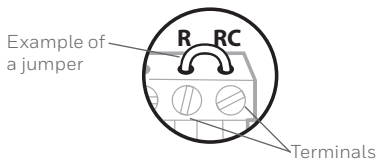
Tip: If the color of your wires has faded or if 2 terminals have the same wire color, use the wire labels provided in the package to label each wire.



6 Remove any jumpers

A jumper connects one terminal to another terminal. It may look like a small staple or even a colored wire and must be removed before continuing. Use a screwdriver to release wires from terminal.

The thermostat does not need jumpers.



- 7 **Record if you have wires in the following terminals**
Do not include jumpers as a part of your count. The thermostat does not need jumpers.

Terminal	Wire Color
<input type="checkbox"/> R	_____
<input type="checkbox"/> R _H	_____
<input type="checkbox"/> R _C	_____

- 8 **Write down the color of the wires**

Check mark the wires that are connected to terminals. Next to the check mark, write down the color of the wire. **Do not include jumpers as a part of your count.**

Check all that apply (Not all will apply):

Terminal	Wire Color
<input type="checkbox"/> Y	_____
<input type="checkbox"/> Y2	_____
<input type="checkbox"/> G	_____
<input type="checkbox"/> C	Required _____

Terminal	Wire Color
<input type="checkbox"/> A or L/A	_____
<input type="checkbox"/> O/B	_____
<input type="checkbox"/> W2 or AUX	_____
<input type="checkbox"/> E	_____
<input type="checkbox"/> W	_____
<input type="checkbox"/> K	_____

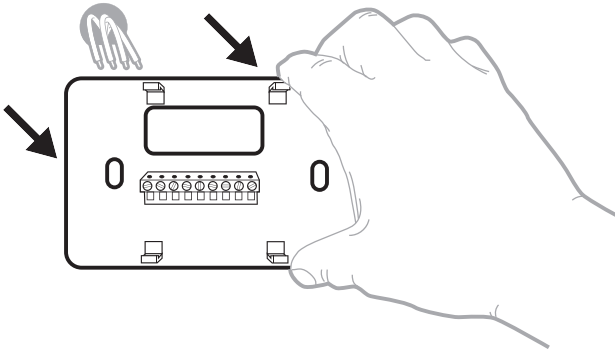
S and U terminals are not supported with this thermostat.

If there are wires in terminals that are not listed, you will need additional wiring support. Visit honeywellhome.com to find out if the thermostat will work for you.

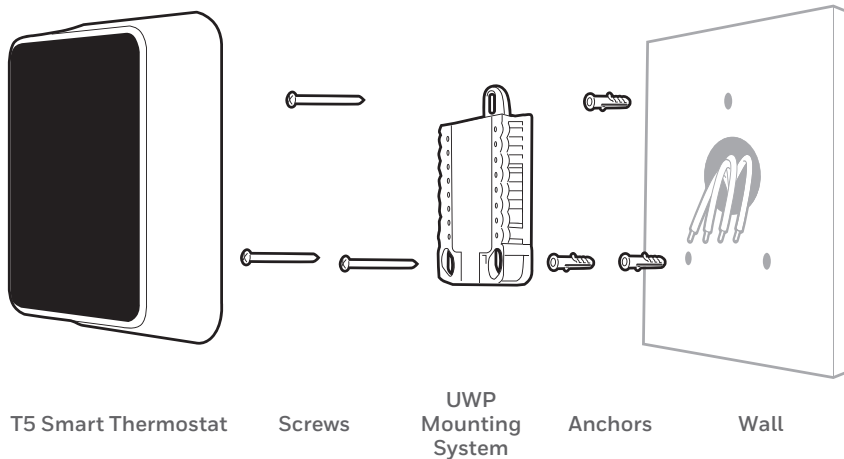
9 Disconnect the wires and remove the old wall plate

Use a screwdriver to release wires from terminals.

Tip: To prevent wires from falling back into the wall, wrap the wires around a pencil.



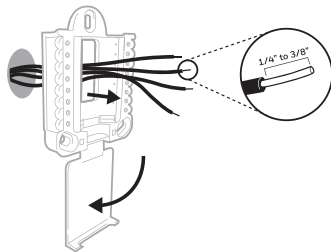
Installing your T5 Smart Thermostat



10 Bundle and insert wires through the UWP

Pull open the UWP and insert the bundle of wires through the back of the UWP.

Make sure at least **1/4-inch** of each wire is exposed for easy insertion into the wire terminals.



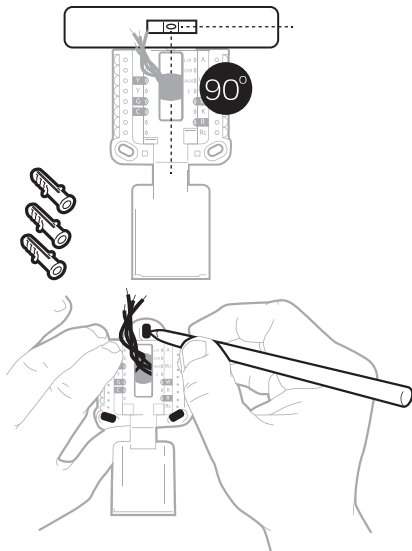
11 Insert the wall anchors

It is recommended that you use the wall anchors included in the box to mount your thermostat.

You can use the **UWP** to mark where you want to place the wall anchors.

- Level the wall plate.
- Mark the location of the wall anchors using a pencil.
- Drill the holes.
- Insert wall anchors.
- Make sure anchors are flush with wall.

Tip: Use a **7/32 drill bit**.

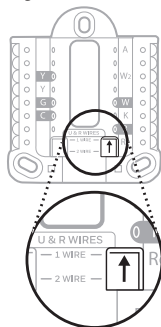


12 Set R-switch position and insert R-wire or wires

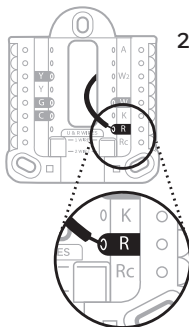
Set the R-switch up or down based on your wiring notes in **Step 7**.

! Insert wires into the inner holes of the terminals on the UWP. The tabs will stay down once the wire is inserted.

If you have 1 R-wire (R, Rh, or Rc)



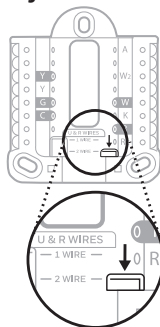
1. Set R-switch to the up position.



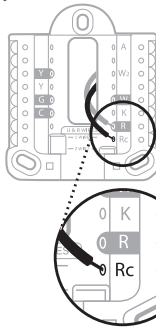
2. Insert your R-wire (R, Rh or Rc) into R-terminal.

or

If you have 2 R-wires (R or Rh, and Rc)



1. Set R-switch to the down position.



2. Insert your Rc wire into Rc-terminal.
3. Insert your R or Rh wire into R-Terminal.



13 Connect remaining wires from Step 8

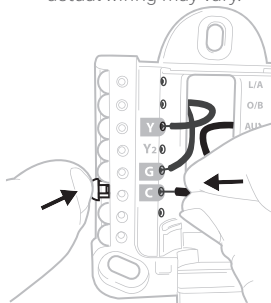
Tip: Do not mount the UWP to the wall prior to connecting the wires.

Depress the tabs to put the wires into the inner holes of their corresponding terminals on the UWP (one wire per terminal) until it is firmly in place.

Gently tug on the wires to verify they are secure.

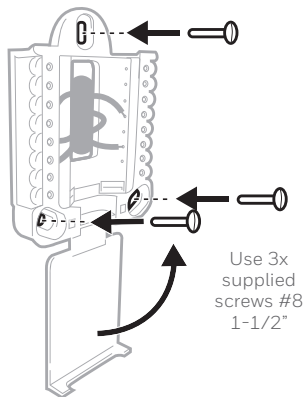
Tip: If you need to release the wires again, push down the terminal tabs on the sides of the UWP.

This wiring is just an example, actual wiring may vary.



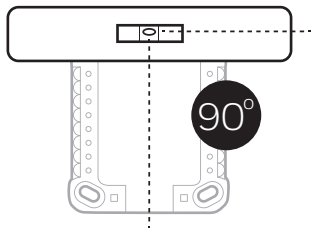
14 Mount the UWP and close the door

Mount the UWP using the provided screws. Install all three screws for a secure fit on your wall. Close the door after you're finished.



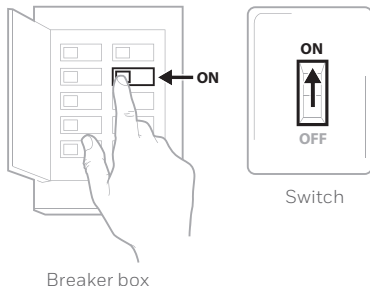
15 Attach your thermostat

Align the thermostat onto the UWP and firmly snap it into place.



16 Turn your power ON

Turn on the power at the breaker box or switch that controls the heating/cooling system.



17 Return to the thermostat

Return to the thermostat. Confirm the screen shows **START SETUP**. If it does, continue to “Setup with Honeywell Home App” on page 15.

If your thermostat does not show **START SETUP**, please contact Resideo support.



Setup with Honeywell Home App

1 Start Setup with the app

Touch **START SETUP** on thermostat.



2 Select to setup with the app

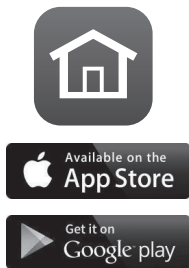
Touch **Yes** on the **USE APP** screen.



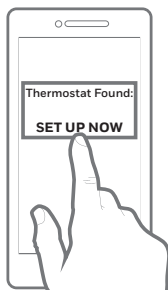
3 Your thermostat is now ready to be configured using the Honeywell Home app

- Download the **“Honeywell Home”** app from the App store or Google play.
- Open the Honeywell Home app. Your thermostat should appear under Thermostat Found. Tap **SET UP NOW** as shown below to continue. If your thermostat doesn't appear, create an account (if necessary), or sign in to your Honeywell Home account. Then select the T5 Smart Thermostat to install.
- The Honeywell Home app will walk you through the rest of setup.

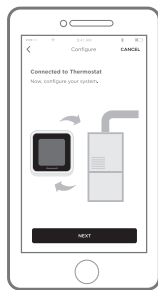
A



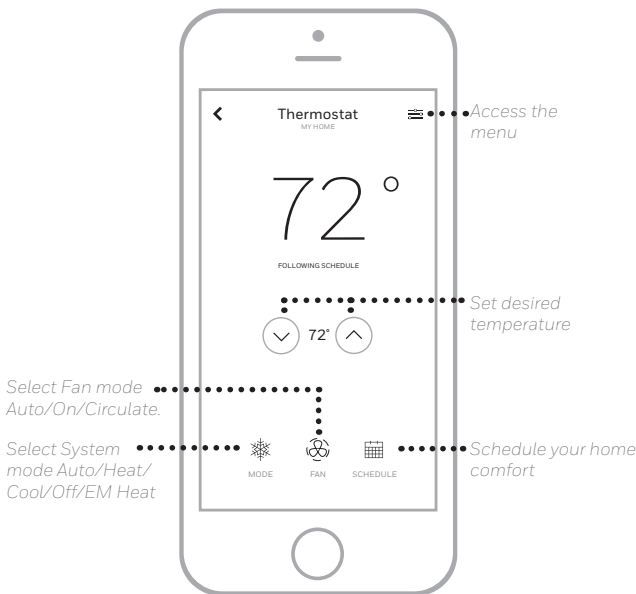
B



C



How to use your Honeywell Home App



Interested in more Resideo products? Visit honeywellhome.com to learn about all available products connected by the Honeywell Home app.

App is regularly enhanced and may change.