

TOSHIBA

TOSHIBA Label Printer

BCP Setting Tool Custom Language Manual

8th Edition: September, 2022

Toshiba Tec Corporation

TABLE OF CONTENTS

1. INTRODUCTION	3
CUSTOM LANGUAGE	3
2. CUSTOM LANGUAGE	4
3. IMPORT, EXPORT AND INITIALIZATION	5
IMPORTING OF THE CUSTOM LANGUAGE FILE	5
EXPORTING OF THE CUSTOM LANGUAGE FILE	5
INITIALIZE CUSTOM LANGUAGE FILE.....	5
4. EDITION OF CUSTOM LANGUAGE	6
EDITION OF PRINTER DEFINITIONS.....	7
EDITION OF MESSAGE DATA	15
EDITION OF LICENSE AGREEMENT	16
5. MESSAGE TEXT	17

1. Introduction

Thank you for purchasing the "BCP Setting Tool", a setting tool for the label printers of Toshiba Tec Corporation (hereinafter referred to as "Toshiba Tec").

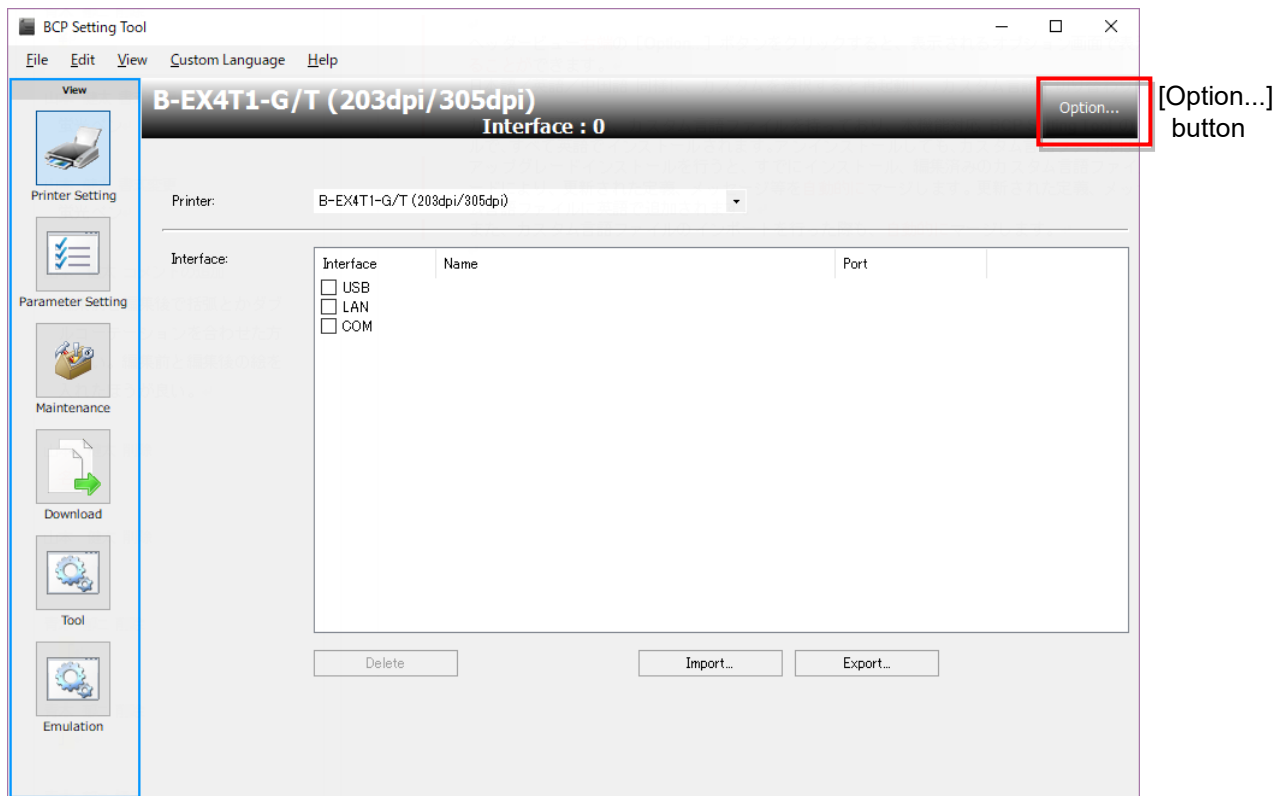
This document gives you a general description of the "BCP Setting Tool" including the editing function of custom language.

Custom Language

Custom Language refers to displaying the BCP Setting Tool in a language other than Japanese, English and Chinese.

This BCP Setting Tool has a feature to edit the custom language function.

2. Custom Language



When you click [Option...] at the right end of the header view, the display language can be changed on the option screen displayed.

When Custom is selected in the same manner as that for Japanese, English and Chinese, the printer reboots and the language is changed to the custom one.

The Custom Language function has a custom language file. This language file is installed while setting English as the default at the first installation of the BCP Setting Tool which supports this function. The custom language file is not deleted even if an uninstallation is carried out.

When an upgrade installation is carried out, the edited custom language file and upgraded definitions and messages are merged automatically. These upgraded definitions and messages are added to the custom language file in English.

In addition, when the custom language file is imported, merging is performed automatically.

3. Import, Export and Initialization

Importing of the custom language file

Importing of the printer definition and message files

From the menu, select [Custom Language] - [Importing custom language file...] to display the file selection screen. Then choose the file to import.

Only a file exported by the Export option of Custom Language can be imported.

Importing of the license agreement of OpenTypeFont

From the menu, select [Custom Language] - [Importing custom language file...] to display the file selection screen. Select [License file(*.rtf)] for the file type and choose the file to import.

Exporting of the custom language file

Exporting of the printer definition and message files

From the menu, select [Custom Language] - [Exporting custom language file...] to display the file selection screen. Then choose the file to export.

All printer definition and message files are imported by one file.

Exporting of the license agreement of OpenTypeFont

From the menu, select [Custom Language] - [Exporting custom language file...], to display the file selection screen. Select [License file(*.rtf)] for the file type and choose the file to export.

Initialize custom language file

From the menu, select [Custom Language] - [Initialize custom language file] to display the confirmation screen. When you click "Yes", the custom language file is initialized.

Once the initialization has been performed, the custom language has been changed to English.

Note:

When the custom file is imported, the custom language is compared.

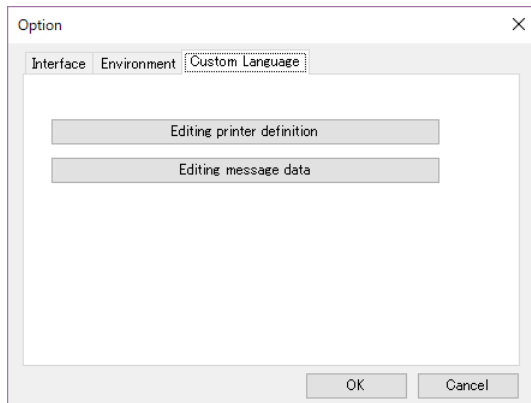
As a result of this comparison, if there is a difference in the number of options for the setting items, the custom language of all options for the concerned setting items will be changed to English.

(Import of the custom language file is carried out when this tool is updated.)

4. Edition of Custom Language

Click [Option...] at the right end of the header view to open the Option screen.

When you press the [Ctrl], [Alt], [Shift] and [Z] keys simultaneously while this screen is displayed, the [Language] tab appears on it.



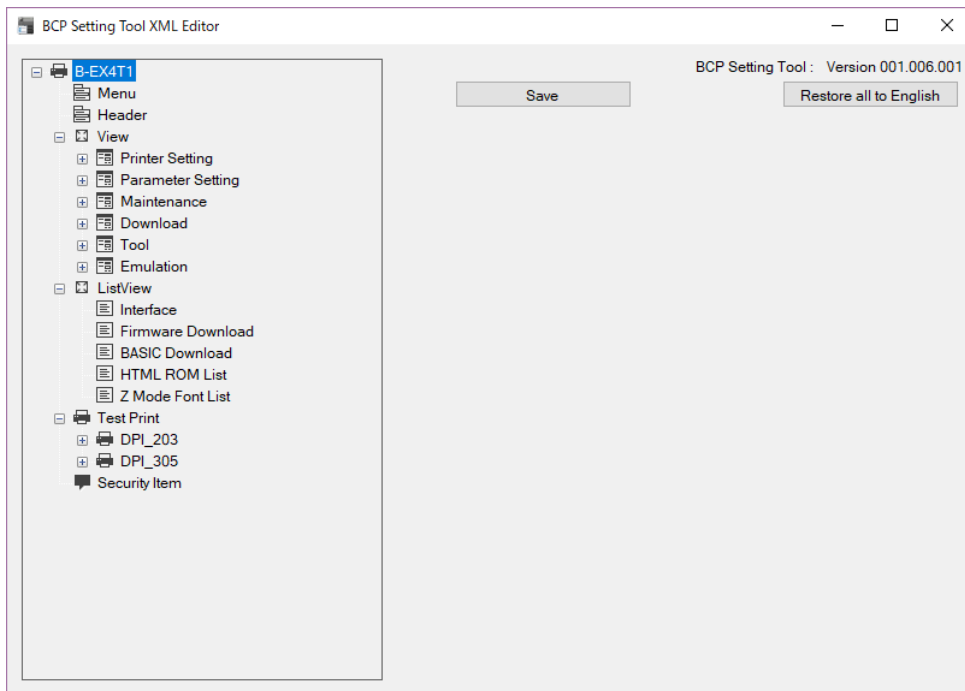
[Editing printer definition]

The tool to edit various definitions of the printer selected in the BCP Setting Tool can be started.

[Editing message data]

The tool to edit messages of the BCP Setting Tool can be started.

Edition of printer definitions



Tree view

The list of edit items is displayed.

Click the item. The data to be edited are displayed at the right-hand screen. T

[Save]

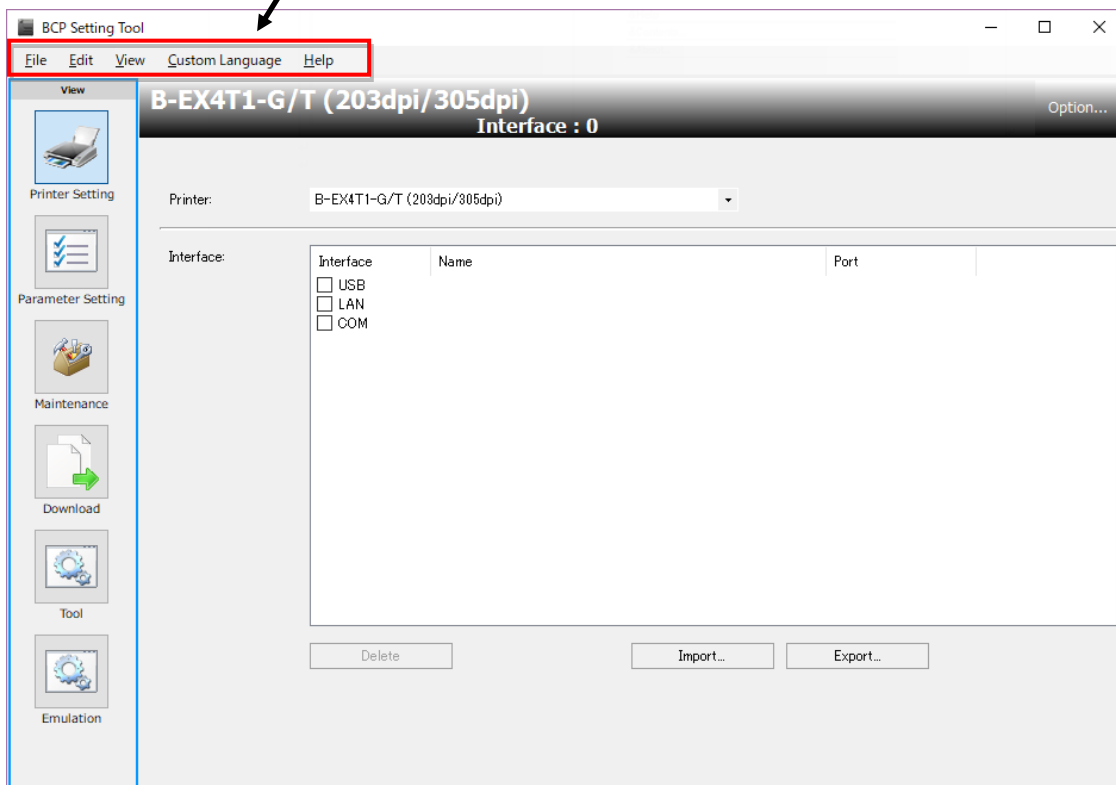
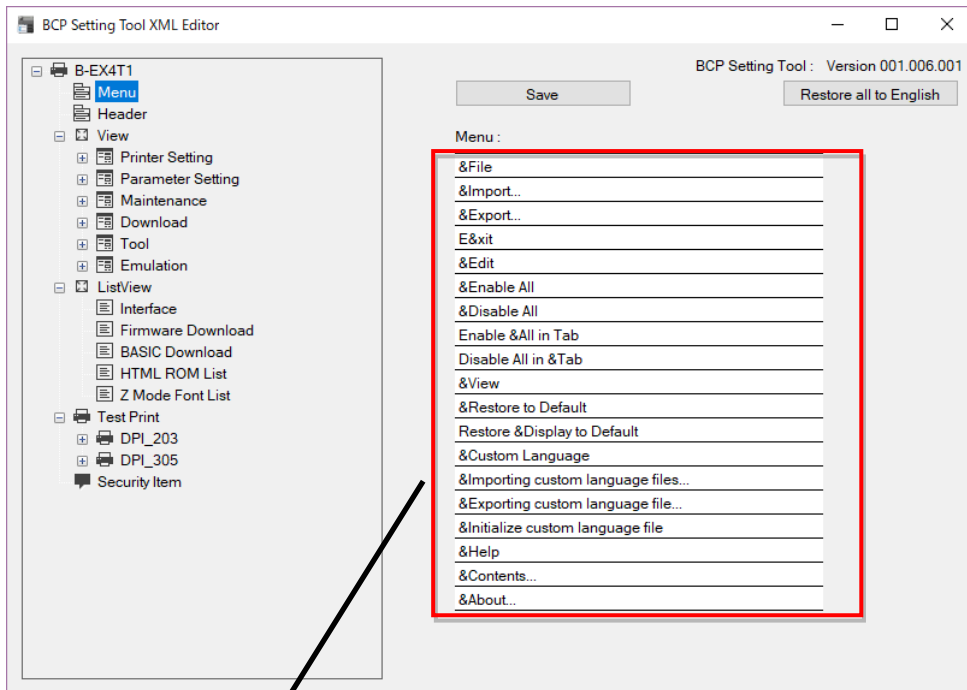
The edited data can be saved.

When [Custom] is selected for the display language of the BCP Setting Tool and the printer is rebooted, the edited data are reflected.

[Restore all to English]

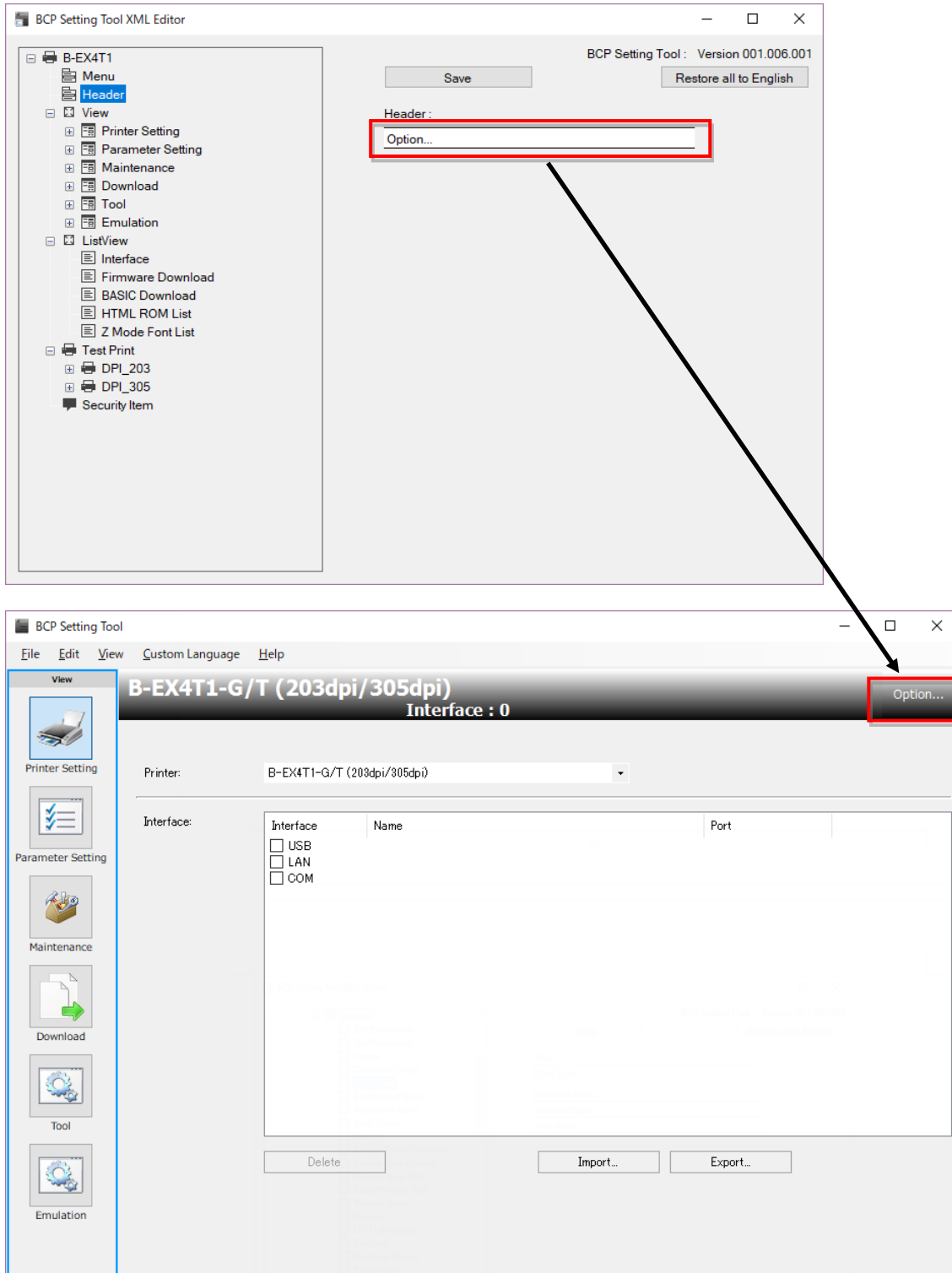
The edited data are canceled and the language is returned to English.

◆ Edition of menu text



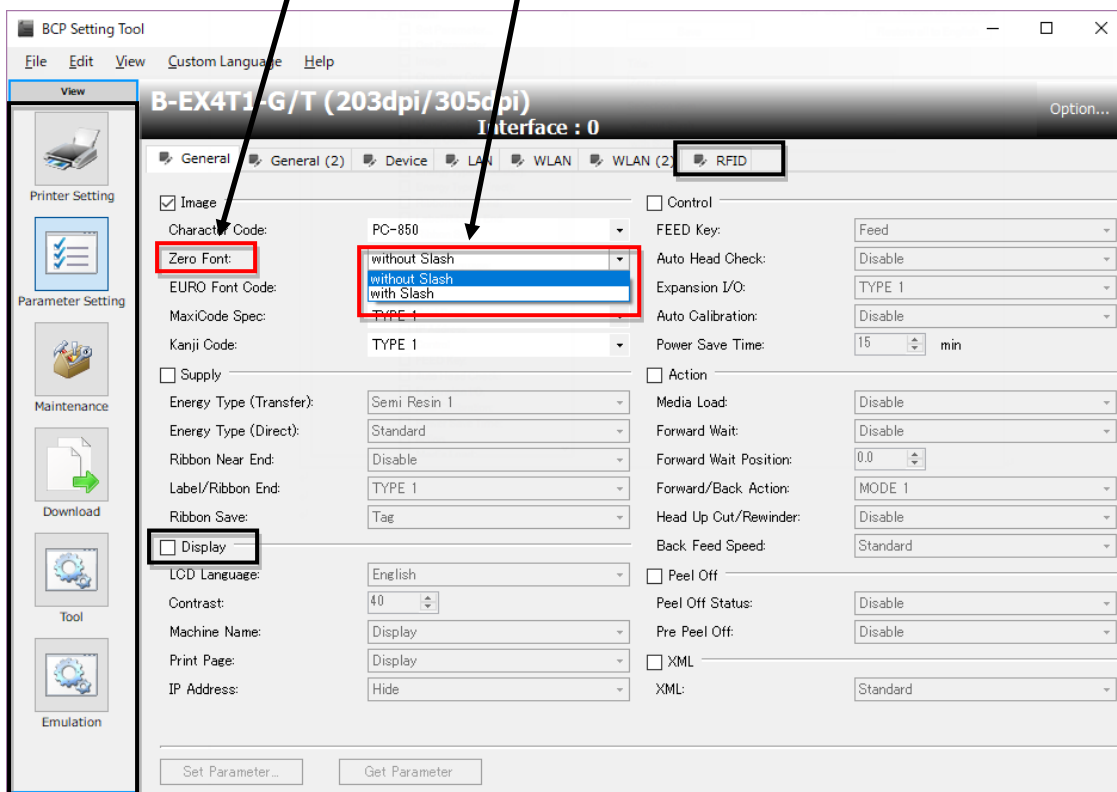
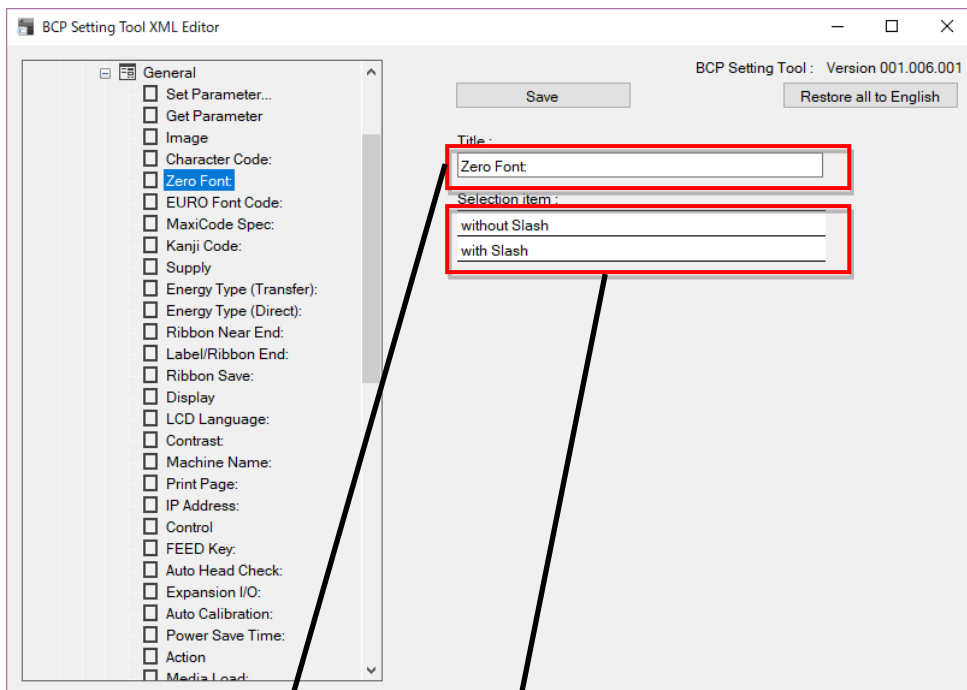
Click [Menu] to display the list on the Menu field.
 Click the menu text to edit and arrange the content directly.
 The string after "&" is the name of the shortcut key of the menu.

◆ Edition of the option button



Click [Header] to display the list on the Header field. Edit the text to be displayed on [Option...].

◆ Edition of Unit, View, Select text



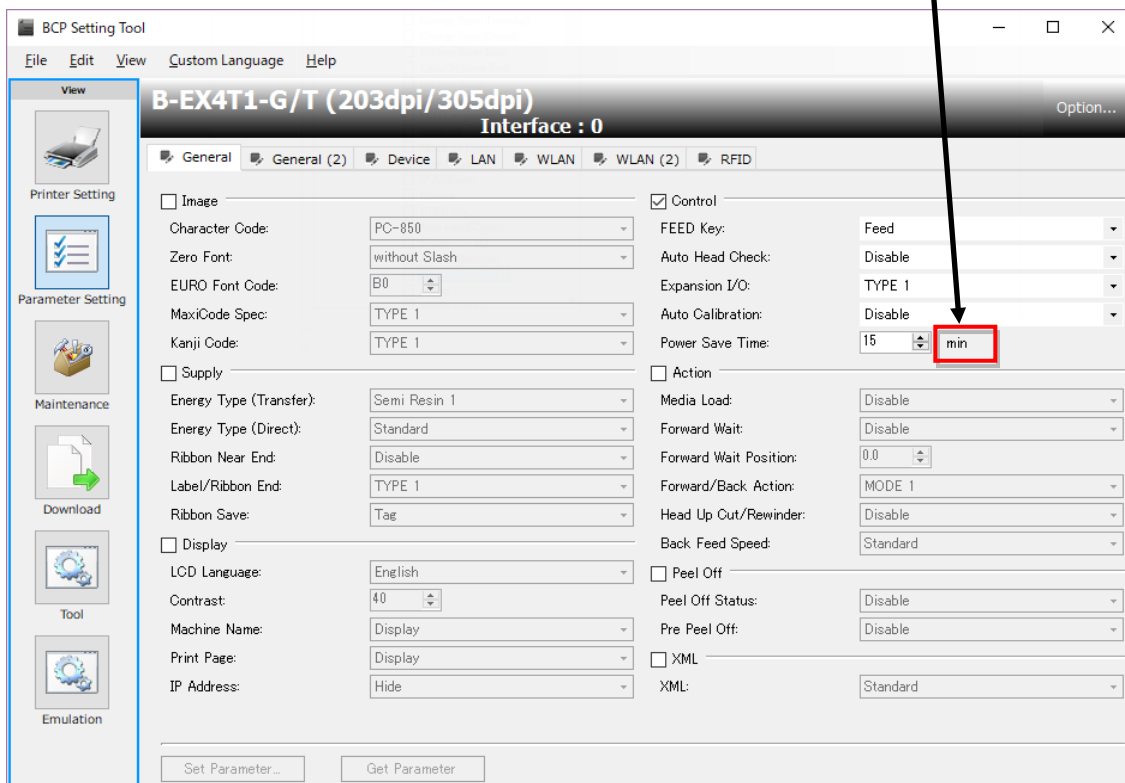
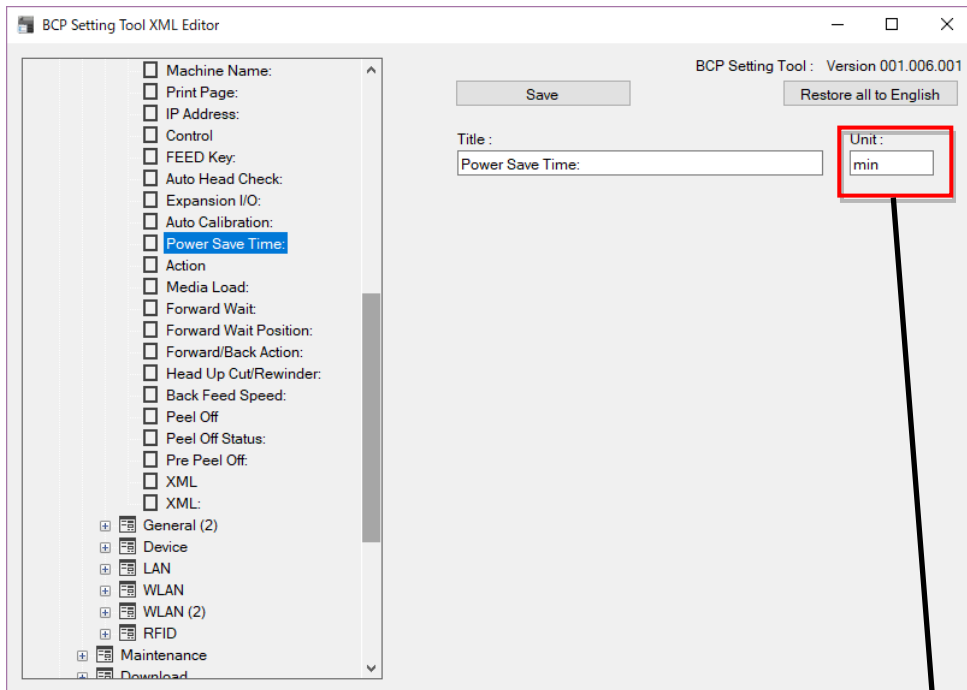
Click the item under [View] to display the edit items such as menu icon text, tab name text of each page, group name text and item name text.

The item name is displayed on the Title field.

As for the item with a content to be selected, a selection item text is displayed on the Selection item field.

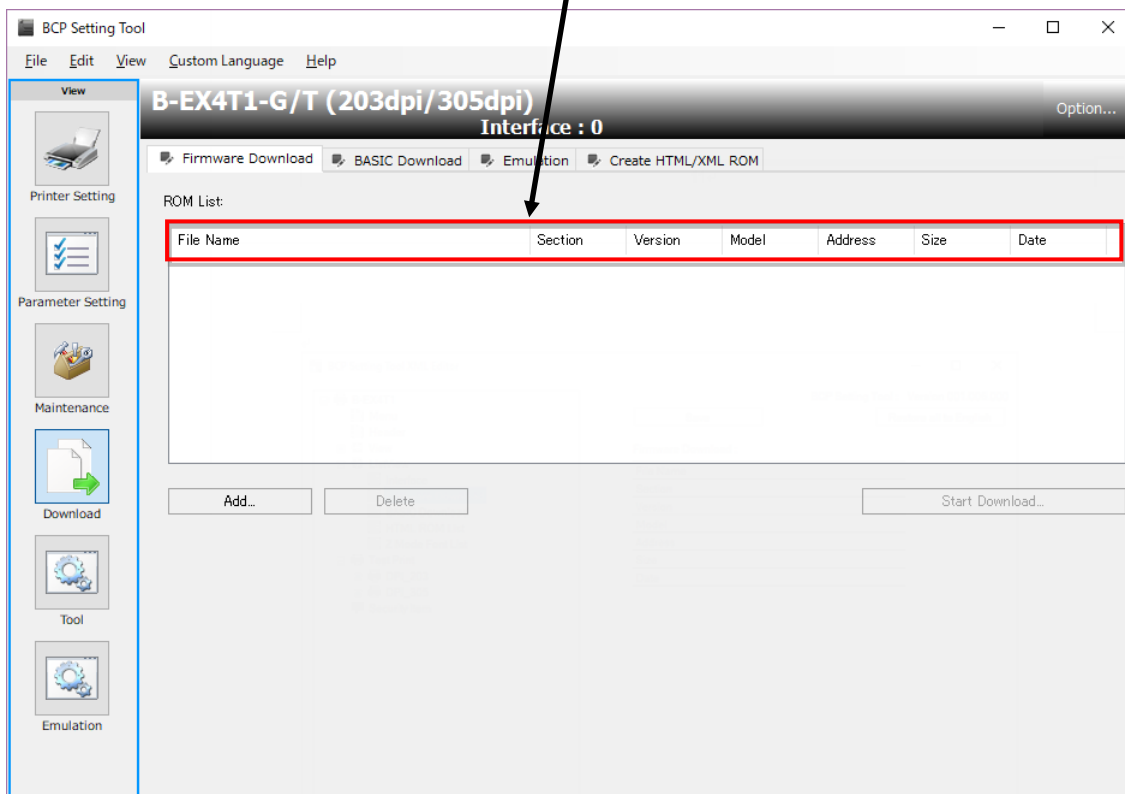
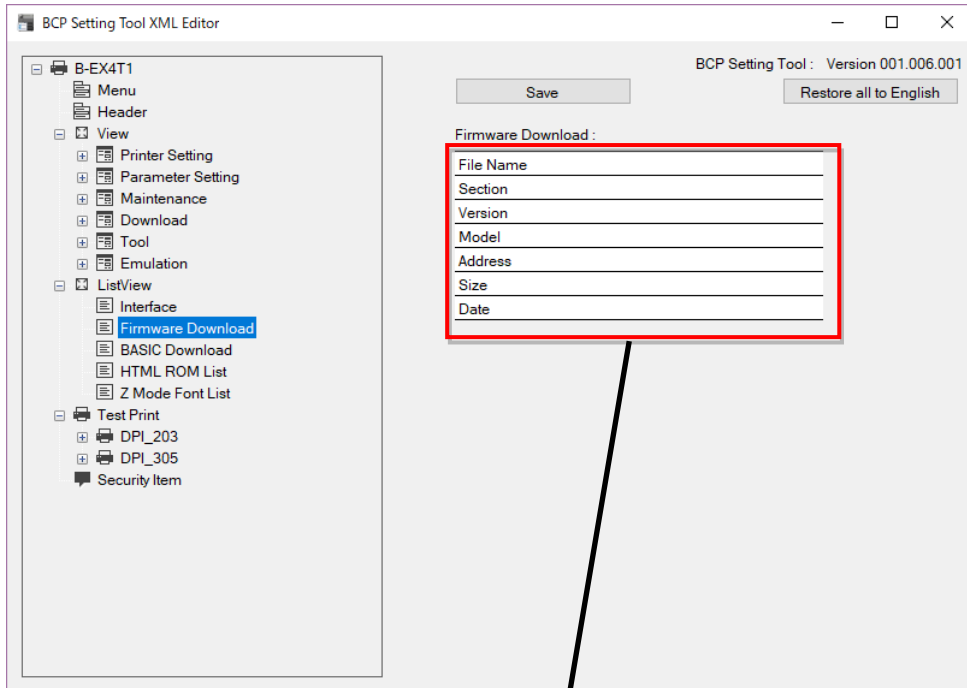
* About an improper change item

If an item which is using the numerical value and the text according to a program is changed, the printer will not be operated properly. Therefore, those items are not displayed on the tree view.



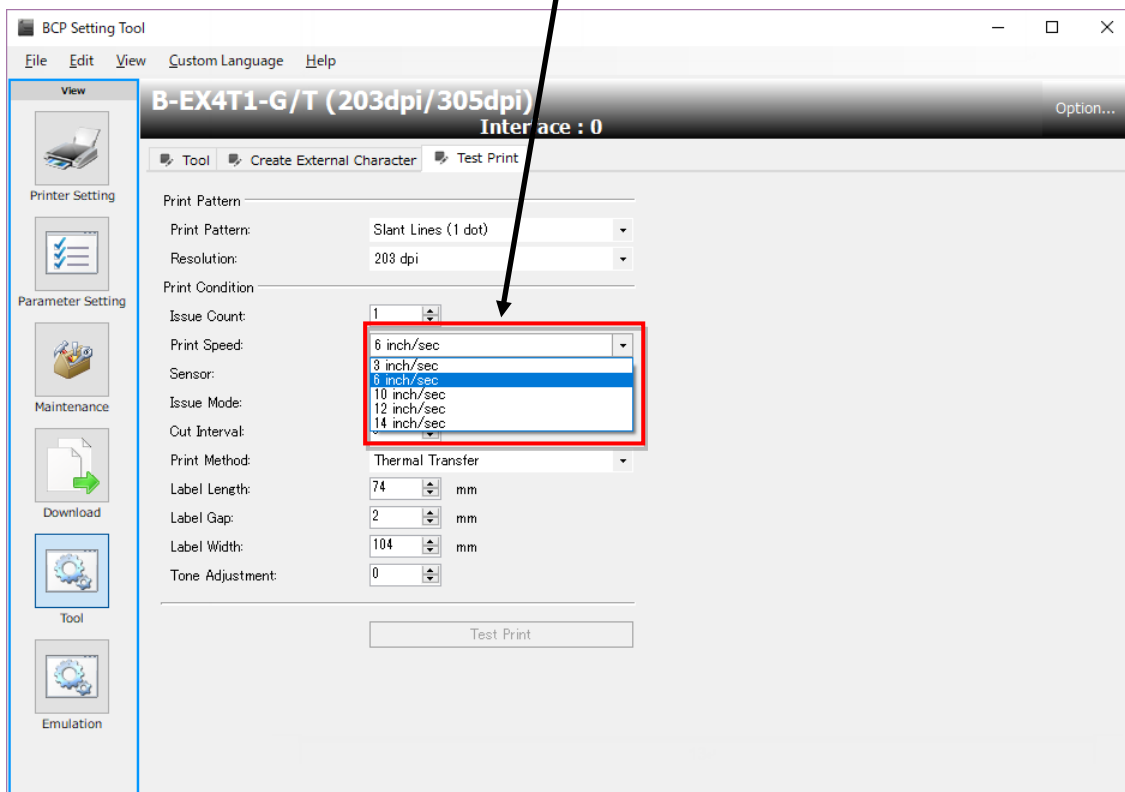
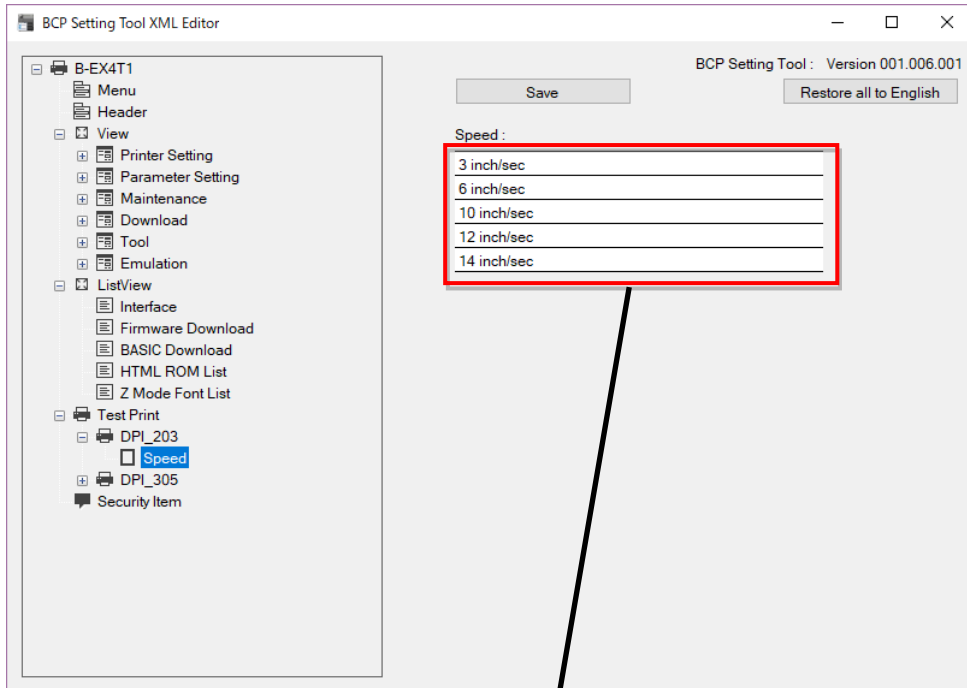
If the item has a unit, it is displayed on the Unit field.

◆ Edition of List Header text



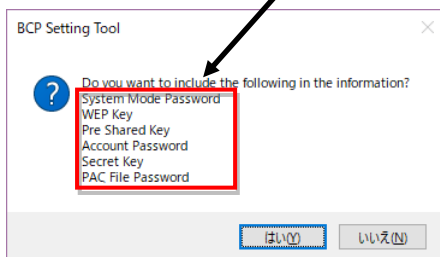
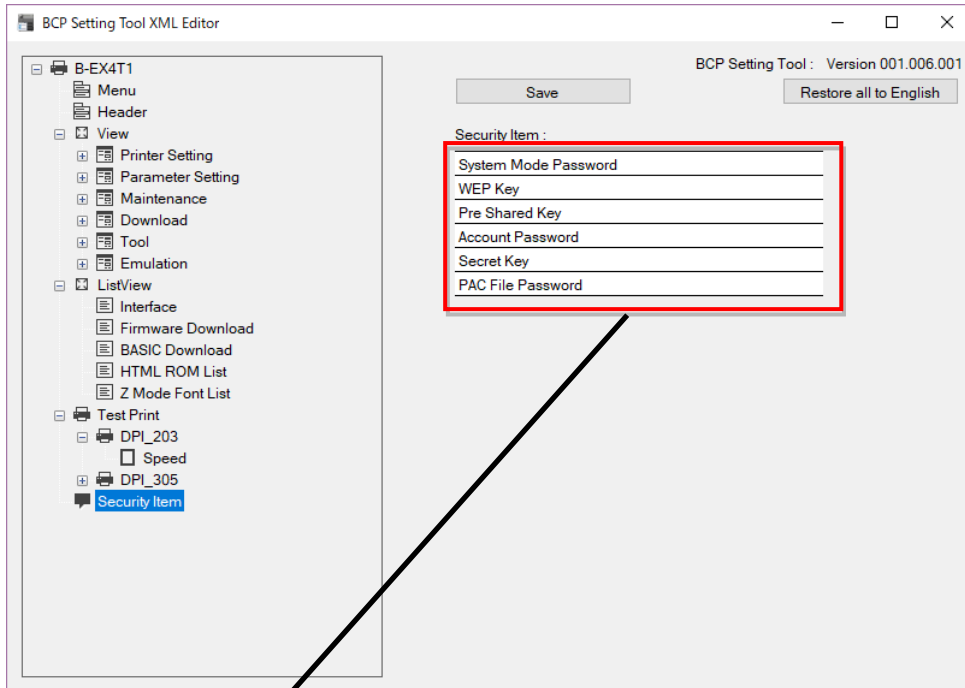
Click the item under [ListView] to display the items of the header text of each ListView.

◆ Edition of Speed for test print



Click [Test Print] – [Resolution] - [Speed] to edit the items for the speed selection text of test printing. Edit the speed list for each resolution.

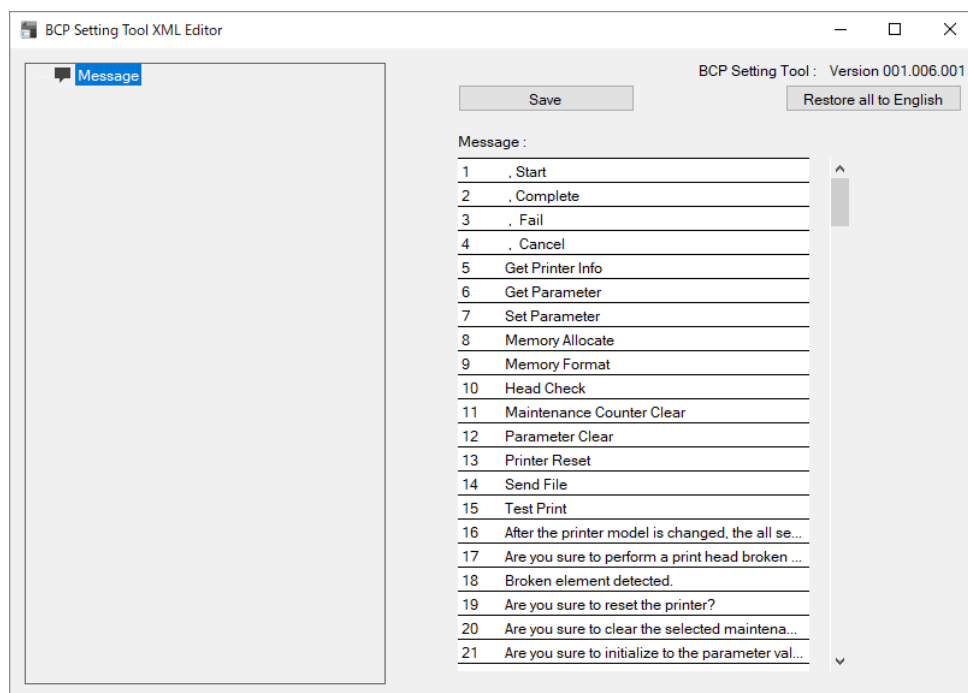
◆ Edition of the security category



The item name text of the message displayed for importing and exporting of the parameter settings can be edited.

Click [Security Item] and edit the security item name text.

Edition of message data



[Save]

The edited data can be saved.

When [Custom] is selected for the display language of the BCP Setting Tool and the printer is rebooted, the edited data are reflected.

[Restore all to English]

The edited data are canceled and the language is returned to English.

The text displayed on the common screen for printers, errors and message box for warnings of the BCP Setting Tool can be edited.

For details about the display location and meanings for each message, refer to "5. Message Text".

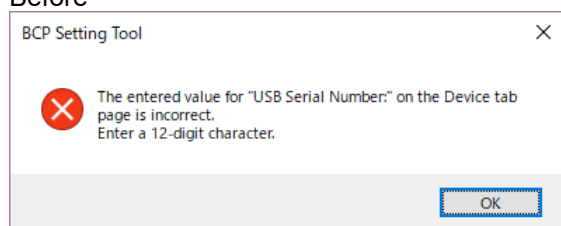
- As for messages of two or more lines, such as an error message, "\r\n" is displayed as a line feed code. Input "\r\n", If you insert a new-line at the time of edit.
- Values with braces such as {0} and {1} mean the variable number inserted by the program. When editing, by following the text to edit, enter the value including braces before the edition. The values including braces must not be changed since they indicate the order of the variable numbers to be inserted by the program

Ex:

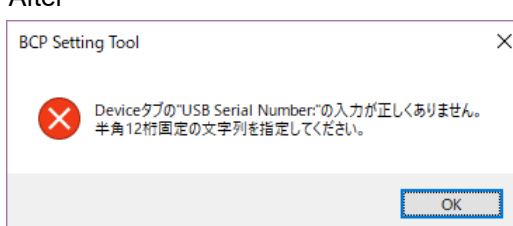
Before The entered value for "{1}" on the {0} tab page is incorrect.\r\nEnter a {2:0}-digit character.

After {0}タブの"{1}"の入力が正しくありません。半角{2:0}桁固定の文字列を指定してください。

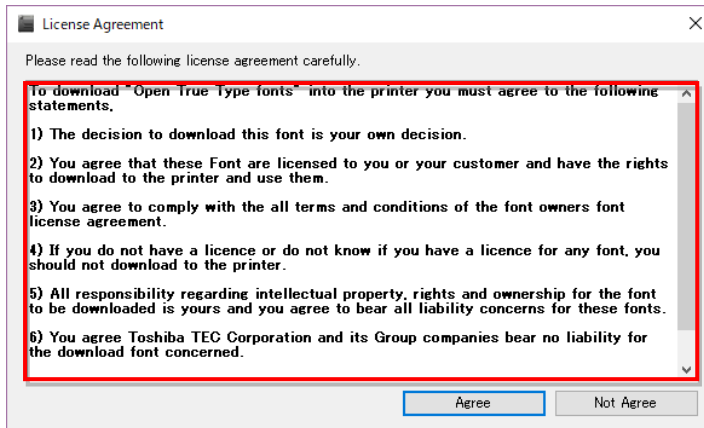
Before



After



Edition of License Agreement



The License Agreement at the downloading of OpenTypeFont cannot be edited by this tool.
Edit this in accordance with the following procedure.

- Click [Custom Language] - [Exporting custom language file...].
- Select [License file (*.rtf)] for the file type and specify the file name. Then perform exporting.
- The exported file is in a rich text format. This can be edited and saved by a Word format file.
- Click [Custom Language] - [Importing custom language file...].
- Select [License file (*.rtf)] for the file type. Choose the file to perform importing.

5. Message Text

* \r\n: Line Break, {xx}: Program Variable

No.	Message	Display position
1	, Start	②
2	, Complete	②
3	, Fail	②
4	, Cancel	②
5	Get Printer Info	②
6	Get Parameter	②
7	Set Parameter	②
8	Memory Allocate	②
9	Memory Format	②
10	Head Check	②
11	Maintenance Counter Clear	②
12	Parameter Clear	②
13	Printer Reset	②
14	Send File	②
15	Test Print	②
16	After the printer model is changed, the all setting values on the all menu screens except the [Printer Setting] screen are initialized.¥r¥nAre you sure to change?	⑦
17	Are you sure to perform a print head broken element check?	⑦
18	Broken element detected.	⑦
19	Are you sure to reset the printer?	⑦
20	Are you sure to clear the selected maintenance counter?	⑦
21	Are you sure to initialize to the parameter values for the selected destination?	⑦
22	Are you sure to allocate the memory as specified size?	⑦
23	Are you sure to format the specified memory?	⑦
24	Factory default	②
25	Are you sure to restore the factory default?	⑦
26	Data Logging	②

27	Firmware is downloaded to the printer.¥r¥nMake sure the printer is ready.¥r¥nAre you sure to start downloading?	⑦
28	Firmware Download	②
29	BASIC Download	②
30	Emulation Download	②
31	Get OTF Info.	②
32	OTF Download	②
33	Please select a file name {0} characters or less.	⑦
34	Files already downloaded.¥r¥n{0}	⑦
35	{0} already exists.¥r¥nDo you want to replace it?	⑦
36	, Defragmentation {0:#,0} KB	②
37	, Deleting {0}.	②
38	, Over Write Mode	②
39	, No enough space available to download.({0:#,0} byte / {1:#,0} byte)	②
40	BASIC program is downloaded to the printer.¥r¥nMake sure the printer is ready¥r¥nAre you sure to start downloading?	⑦
41	No printer connection is detected.	②
42	Cannot confirm the printer is in online mode.	②
43	Cannot confirm the printer is in download mode.	②
44	The printer is not in idle state.	②
45	I failed to open the file.	②
46	I failed to write the file.	②
47	Communication error	②
48	An error ({0}) occurred on the printer.	②
49	Timeout error	②
50	, Preparing for downloading...	②
51	, Changing to download mode...	②
52	Printer is not ready.	②
53	, Sending {0} firmware to the printer...	②
54	, Completed {0} firmware to the printer...	②

55	, Sending {0} to the printer...	②
56	, Completed {0} to the printer...	②
57	, Updating the printer...	②
58	A file already exists in the same section.¥r¥nDo you want to replace it?	⑦
59	, Updating the main program...	②
60	, Updating the system mode program...	②
61	, Updating the data file...	②
62	, Updating the Z Mode system parameter file...	②
63	, Updating the Z Mode Initial values & table file...	②
64	, Updating the D Mode Initial values file...	②
65	, Updating the S Mode Initial values file...	②
66	, Sending the file...	②
67	No file is found in the specified file.¥r¥nSelect the folder containing a file in the correct format.	⑦
68	There is an empty file.	⑦
69	The max. acceptable size for the HTML/XML ROM files is exceeded.¥r¥nCheck the file size in the folder.	⑦
70	Creating an HTML/XML ROM file failed.¥r¥nCheck if the file in the list is readable.	⑦
71	The max. acceptable number of files for HTML/XML ROM files is exceeded.¥r¥nCheck the number of files in the file.	⑦
72	Total	⑭
73	Date,Time,Interface,Device Name,Processing,Process,Detailed status	
74	Add LAN Interface	⑩
75	Host Name	⑩
76	IP Address	⑩
77	Port Number	⑩
78	Add Bluetooth Interface	⑪
79	Virtual COM Port:	⑪
80	About {0}	⑫
81	Option	⑧
82	Interface	⑧

83	Environment	⑧
84	&Language:	⑧
85	&Multiple select device	⑧
86	&Get parameter on start up	⑧
87	M&ax device count:	⑧
88	&Default Domain Name:	⑧
89	&Control Code:	⑧
90	Code &1:	⑧
91	Code &2:	⑧
92	Code &3:	⑧
93	Cancel	
94	Close	④
95	&Password...	⑧
96	Retry	⑥
97	Logging...	⑤
98	Password Change	⑨
99	&Old Password:	⑨
100	&New Password:	⑨
101	&Confirm New Password:	⑨
102	The old password is not correct.¥r¥nEnter a correct password.¥r¥nThe password is case-sensitive.	⑦
103	The new password and the confirmation password do not match.¥r¥nEnter a correct password.¥r¥nThe password is case-sensitive.	⑦
104	Login	⑮
105	Please enter the password.	⑮
106	The password is not correct.¥r¥nEnter a correct password.¥r¥nThe password is case-sensitive.	⑦
107	Do you want to include the following in the information?¥r¥n{0}	⑦
108	The following data not found in the specified file.¥r¥nThey have no setting value.¥r¥n{0}	⑦
109	The selected file is for the different printer model.¥r¥nIf this file is imported, the printer model on the [Printer Setting] screen is changed.¥r¥nAre you sure to import the file?	⑦
110	Obtaining the printer settings failed.({0}/{1})	②

111	Updating the printer settings failed.({0}/{1}/{2})	②
112	Not supported.({0}/{1}/{2})	②
113	Do you want to cancel the processing?	⑦
114	The configuration file for a wrong printer was specified.¥¥¥nSelect a file in the correct format.	⑦
115	Failed to import the following parameter. Set the default value.¥¥¥n¥¥¥n{0}¥¥¥n{1}	⑦
116	Saving data in the specified file failed.¥¥¥nCheck if the file is writable.	⑦
117	Wrong values were entered.¥¥¥n{0} {1} {2}	⑦
118	The same value is set for all of "Code 1", "Code 2" and "Code 3" on the {0} tab page.¥¥¥nSet a different value for each.	⑦
119	The entered value for "{1}" on the {0} tab page is incorrect.¥¥¥nEnter a {2:0}-digit character.	⑦
120	The entered value for "{1}" on the {0} tab page is incorrect.¥¥¥nWhen using hex. format, enter an even-digit code.	⑦
121	The entered value for "MAC Address {1:0}" on the {0} tab page is incorrect.¥¥¥nEnter a {2:0}-digit hex. code.	⑦
122	The entered value for "{1}" on the {0} tab page is incorrect.¥¥¥nWhen using hex. format, enter a 10-digit or 26-digit hex. code.¥¥¥nWhen using ASCII, enter a 5-digit or 13-digit character string.	⑦
123	The entered value for "{1}" on the {0} tab page is incorrect.¥¥¥nThe specified path does not exist.¥¥¥n{2}	⑦
124	Main Program	⑩
125	System Mode Program	⑩
126	Data File	⑩
127	Z Mode System parameter file	⑩
128	Z Mode Initial values & table file	⑩
129	Send test file	⑩
130	D Mode Initial values file	⑩
131	Main Program	⑩

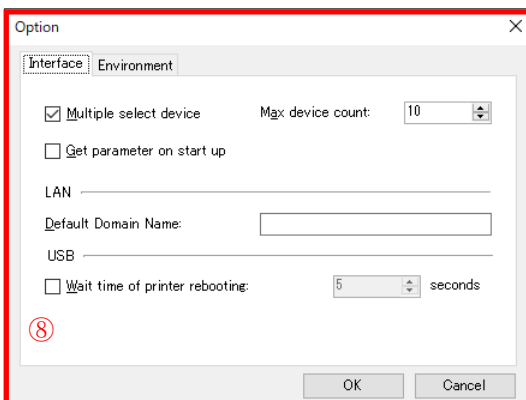
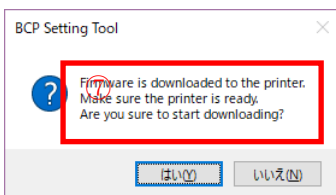
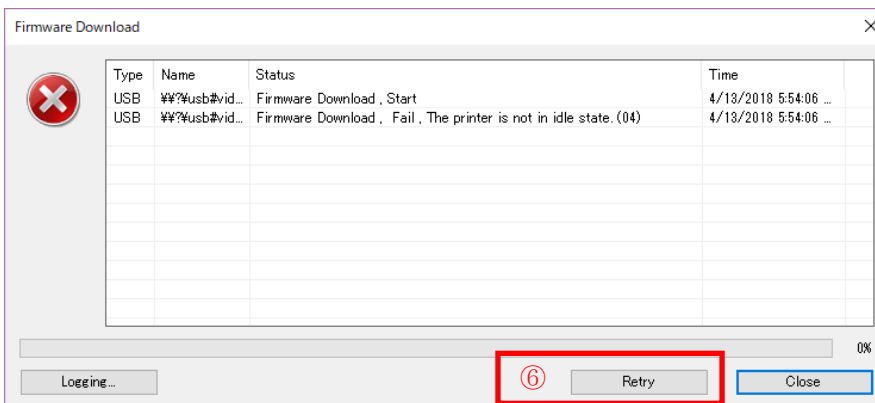
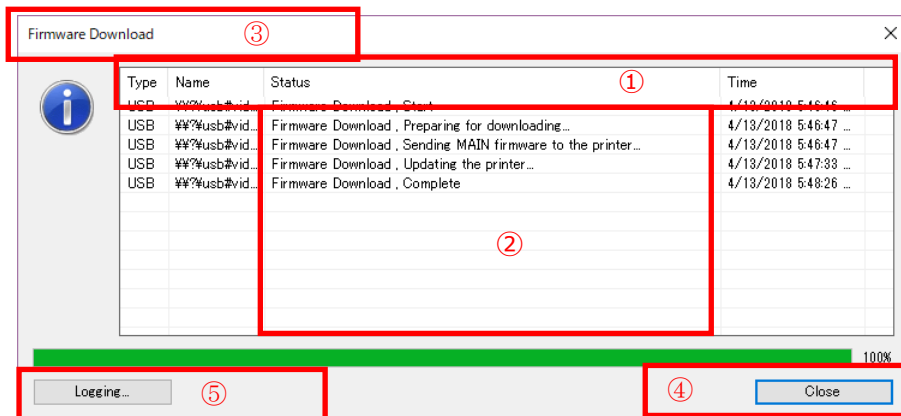
132	System Mode Program	⑩
133	Z Mode System parameter file	⑩
134	Z Mode Initial values & table file	⑩
135	Send test file	⑩
136	D Mode Initial values file	⑩
137	Selected file is not a monochrome bitmap file.¥¥¥nSelect a file in the correct format.	⑦
138	The specified file exceeds the maximum width or height of the external character.¥¥¥nSpecify the file with the proper size.	⑦
139	The specified file exceeds the maximum width or height of the external character.¥¥¥nSpecify the file with the proper size.	⑦
140	Creating an external character file failed.¥¥¥nCheck if the bitmap file in the bitmap list is readable.	⑦
141	The external character data created successfully.	⑦
142	Saving data in the specified file failed.¥¥¥nCheck if the file is writable.	⑦
143	The Product needs to be restarted for the changed language take effect.¥¥¥nDo you want to save the changes and restart this tool?	⑦
144	Add COM Interface	⑬
145	Port Number	⑬
146	Baud Rate	⑬
147	Data Length	⑬
148	Parity	⑬
149	Stop Bit	⑬
150	COM port not found.	⑦
151	Generation of print data failed.¥¥¥nRestart the Product, and retry the operation.If printing cannot be performed, re-install the Product.	⑦
152	The same value is set for all of "Code 1","Code 2" and "Code 3".¥¥¥nSet a different value for each.	⑦
153	The specified file is the ROM file for the printer model different from the specified one on the Printer Setting screen.¥¥¥nSelect the proper ROM file.	⑦

154	The specified file is not a ROM file for the printer.¥r¥nSelect the file in the proper format.	⑦
155	Emulation	③
156	Z Mode	③
157	D Mode	③
158	S Mode	③
159	Z Mode Get System parameter setting	③
160	Z Mode Get Initial values & table setting	③
161	D Mode Get Initial values setting	③
162	S Mode Get Initial values setting	③
163	Z Mode Set System parameter setting	②
164	Z Mode Set Initial values & table setting	②
165	D Mode Set Initial values setting	②
166	Download	⑱
167	Start to send	⑱
168	Cancel	⑱
169	Active Emulation after download	⑱
170	Start block:	⑱
171	MODE ON/OFF	⑰
172	MODE ON	⑰
173	MODE OFF	⑰
174	NONE	⑰
175	{0}¥r¥nThe number of parameters is incorrect.	⑦
176	Do you want to reset the {0} to the default?	⑦
177	Do you want to save changes to the Z Mode system parameter?	⑦
178	Do you want to save changes to the Z Mode initial value && table settings?	⑦
179	Do you want to save changes to the D Mode initial value?	⑦
180	Do you want to save changes to the S Mode initial value?	⑦
181	The BASIC program has an error. ¥r¥n({0})¥r¥nCheck the program code.	⑦
182	The BASIC program does not conform to the defined specification. ({0})¥r¥nCheck the program code.	⑦
183	Reading the specified file failed.¥r¥nCheck if the file is readable.	⑦

184	License Agreement	①⑨
185	Please read the following license agreement carefully.	①⑨
186	Agree	①⑨
187	Not Agree	①⑨
188	Do you want to change the mode?¥¥¥nIt takes a few seconds to complete.	⑦
189	Print Command Mode Change	③
190	TOTAL FEED {0}m[{12}]¥¥¥nTOTAL PRINT {1}m¥¥¥nFEED {2}m¥¥¥nFEED1 {3}m¥¥¥nFEED2 {4}m¥¥¥nFEED3 {5}m¥¥¥nFEED4 {6}m¥¥¥nPRINT {7}m¥¥¥nPRINT1 {8}m¥¥¥nPRINT2 {9}m¥¥¥nPRINT3 {10}m¥¥¥nPRINT4 {11}m¥¥¥n	②⑩
191	Enable Emulation	③
192	Disable Emulation	③
193	If you "enable" the "XML" or "Basic Interpreter" functions then please set the "Print Command Mode" to "TPCL".	⑦
194	The data entered for the "Device Nickname" on the Device tab is incorrect.¥¥¥nPlease enter a character string of 1 to 32-digits.	⑦
195	Firmware download works with one file only.¥¥¥nDo you want to change the file ?	⑦
196	Firmware download will start.¥¥¥nPlease set the printer in download mode.¥¥¥nStart downloading, are you sure?	⑦
197	OK	
198	Block	①⑦
199	The configuration file for a wrong interface was specified.¥¥¥nSelect a file in the correct format.	⑦
200	Custom Language	⑧
201	Edit printer definition	⑧
202	Editing message data	⑧
203	Initialize the custom language file.	⑦
204	Type	①
205	Name	①
206	Status	①
207	Time	①
208	The custom language file for a wrong was specified.¥¥¥nSelect a file in the correct format.	⑦

209	S Mode Set Initial values setting	③
210	Get printer parameter	②②
211	Do you want to set Emulation enable after getting parameter?	②②
212	&Wait time of printer rebooting:	⑧
213	seconds	⑧
214	Do you want to set Emulation enable after downloading? (Only BA400T-G/T)	②①
215	The setting information for "{0}" is imported.¥r¥nHowever, the setting information for the [WLAN] tab and the [WLAN(2)] tab is not imported.¥r¥nThe default values for each item of the [WLAN] tab and the [WLAN(2)] tab will be displayed. (Only B-EX4 WLAN3)	②③
216	Could not allocate the selected memory size on this printer.	②
217	The combination of these two firmwares are not compatible.¥r¥n¥r¥n{0}¥r¥n{1}	⑦
218	This ROM file is not compatible with target printer.	②
219	Not supported	②
220	Complete	②
221	Updating the E Mode Initial values file...	②
222	E Mode	③
223	E Mode Get Initial values setting	②
224	E Mode Set Initial values setting	②
225	Do you want to save changes to the E Mode initial value?	⑦
226	I Mode	③
227	I Mode Get Initial values setting	②
228	I Mode Set Initial values setting	②
229	Do you want to save changes to the I Mode initial value?	⑦

Display



Password Change

Old Password:

New Password:

Confirm New Password:

⑨

Add LAN Interface

☒ Host Name

☐ IP Address

Port Number

Add Bluetooth Interface

Virtual COM Port:

⑪

About BCP Setting Tool

BCP Setting Tool
Version 001.006.000

⑫ Copyright (C) 2016-2018 TOSHIBA TEC CORPORATION
All Rights Reserved.

Add COM Interface

⑬ Port Number

Baud Rate

Data Length

Parity

Stop Bit

BCP Setting Tool

File Edit View Custom Language Help

View

Printer Setting

Parameter Setting

Maintenance

Download

Tool

Emulation

B-EX4T1-G/T (203dpi/305dpi)
Interface : USB

Option...

Firmware Download BASIC Download Emulation Create HTML/XML ROM

ROM Type: HTML/XML

Source Path: C:\XML

Section: XML Address: 00B00000

Version: V1.0 Size: 1024

Model: B-EX Date: 01JAN2008

Source List: 19 ROM List:

No.	ID	File Name	Offset	Size
7	/	XML/invoice1.FTR	54DD	24
8	/	XML/invoice1.HDR	54F5	3924
9	/	XML/invoice1.INI	6449	5228
10	/	XML/SAPsam.FTR	78B5	24
11	/	XML/SAPsam.HDR	78CD	776
12	/	XML/SAPsam.INI	78D5	481
13	/	XML/XML.INI	7DB6	200
14	/	GRP_DATA/enjoy.bmp	7E7E	1566
15	/	GRP_DATA/SAP_TES1.bmp	849C	334
16	/	GRP_DATA/SAP_TES2.bmp	85EA	334
17	/	GRP_DATA/SAP_TES3.bmp	8738	334
18	/	GRP_DATA/SAP_TES4.bmp	8886	470
19	/	GRP_DATA/SAP_TES5.bmp	8A5C	334
		Total	8BAA	35754

Data Size + Index = 34.9KB(3.4%)

⑭

Login

Please enter the password.

15 OK Cancel

BCP Setting Tool

File Edit View Custom Language Help

B-EX4T1-G/T (203dpi/305dpi) Interface : USB

Firmware Download BASIC Download Emulation Create HTML/XML ROM

☒ Memory Allocate

True Type Font Storage Area: 0 KB (0 Block)

Bitmap External Character Storage Area: 0 KB (0 Block)

☐ Retain BASIC Area

BASIC File Storage Area: 768 KB (6 Block)

PC Save Storage Area: 2304 KB (18 Block) 17

Type	Start Block	Use Block	File Name	Add	Clear
Main Program	0			Add	Clear
System Mode Program	2			Add	Clear
Z Mode System parameter file	3			Add	Clear
Z Mode Initial values & table file	4			Add	Clear
D Mode Initial values file	5			Add	Clear
MODE ON/OFF			NONE		
Send test file				Add	Clear

16

Start Download...

Download

Start block: 3

☒ Active Emulation after download

Start to send Cancel

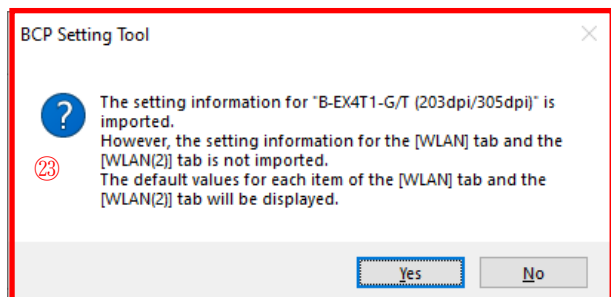
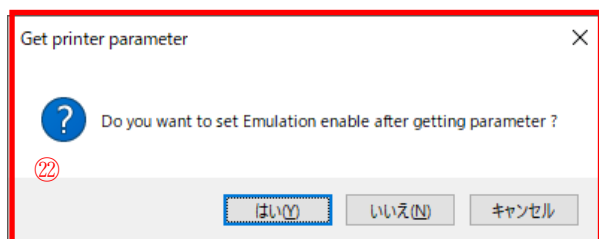
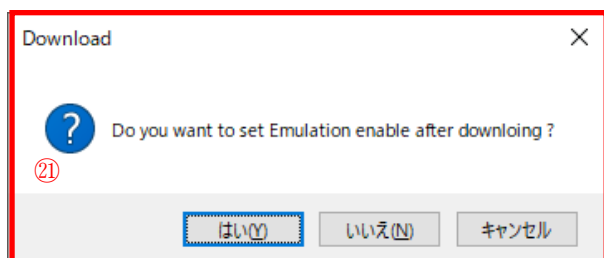
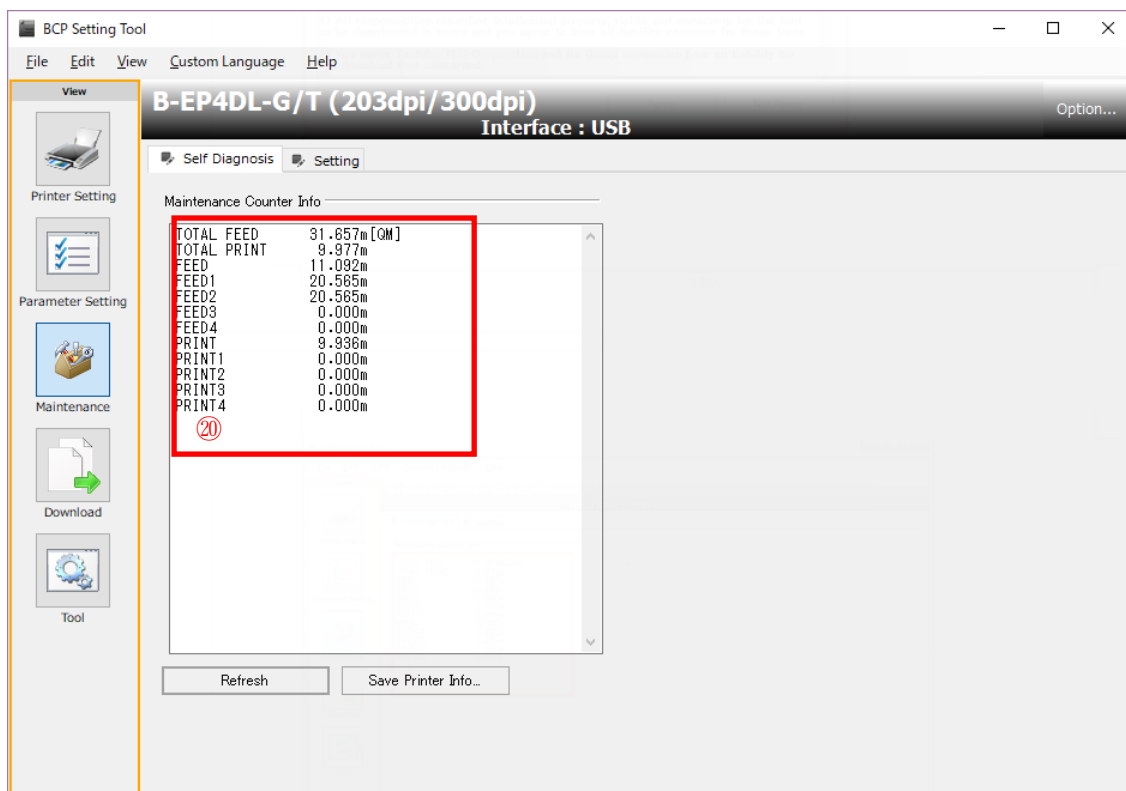
License Agreement

Please read the following license agreement carefully.

To download "Open True Type fonts" into the printer you must agree to the following statements.

- 1) The decision to download this font is your own decision.
- 2) You agree that these Font are licensed to you or your customer and have the rights to download to the printer and use them.
- 3) You agree to comply with the all terms and conditions of the font owners font license agreement.
- 4) If you do not have a licence or do not know if you have a licence for any font, you should not download to the printer.
- 5) All responsibility regarding intellectual property, rights and ownership for the font to be downloaded is yours and you agree to bear all liability concerns for these fonts.
- 6) You agree Toshiba TEC Corporation and its Group companies bear no liability for the download font concerned.

19 Agree Not Agree



.....
8th Edition issued: September, 2022

Toshiba Tec Corporation

1-11-1, Osaki, Shinagawa-ku, Tokyo 141-8562
Gate City Ohsaki West Tower

.....
© Toshiba Tec Corporation 2020-2022 All rights reserved.

BS22003000-EN