

Receiver of Remote Control

GENERAL INFORMATION

This FAN28R receiver of ceiling fan remote control is designed to separately control your ceiling fan speed(HI, MED, LOW, OFF) and light brightness(ON,OFF,DIMMING). It to work with ceiling fan that requires a remote control (**Not included**).

Note:

This FAN28R Ceiling Fan Remote Control Receiver 240w works at radio frequency 303.9MHz, 5-wires, Replace for 28R FAN18R 18R which works with Fan-HD FAN-53T FAN-35T1.

When installing the remote control, be sure your fan is operated in “ **HIGH SPEED** ” and light is in “ **ON** ” condition at the switch knob.

Installation and operating instructions

Safety precautions:

WARNING: HIGH VOLTAGE! Disconnect power by removing fuse or switching off circuit breaker.

Do not use with solid state fans.

Electrical wire must meet all local and national electrical code requirements.

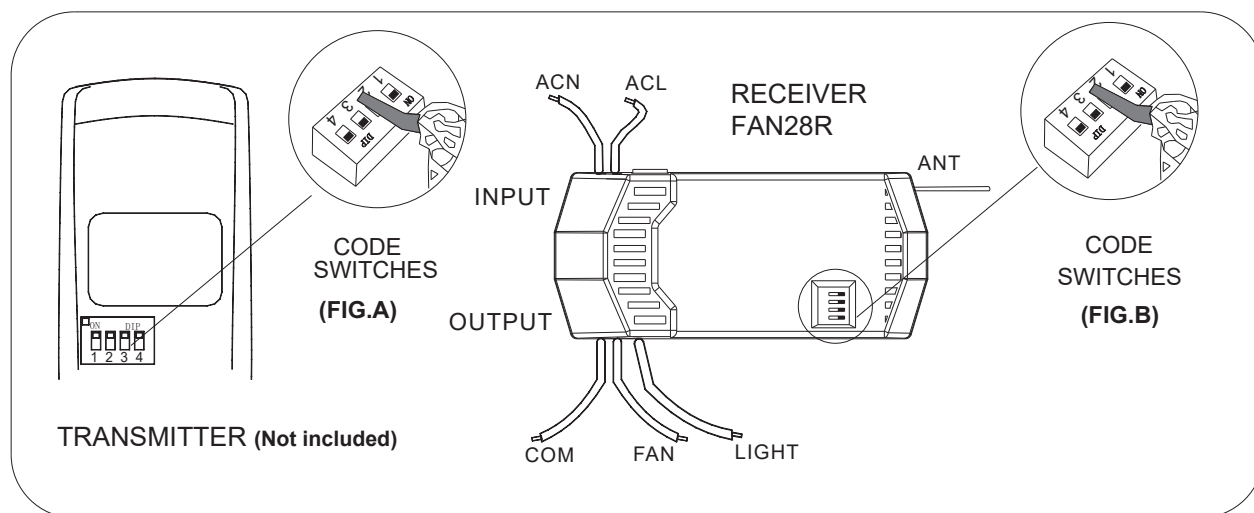
Supply for fan must be 110/120 volt, 60Hz. Maximum fan motor amps: 1.0, Maximum light watts: 240 incandescent or ballast.

Otherwise power can cause serious injury or death.

Note: This receiver has 16 different code combinations. To set the code, perform these steps:

1. Setting the code on the remote:
 - a. Remove the battery cover. Press firmly below the arrow and slide battery cover off.
 - b. Slide the code switches to your choice of up or down position (factory setting is all up). Do not use this position. Use a small screwdriver or a ballpoint pen to slide firmly up or down (Fig. A).
 - c. Replace the battery cover on the transmitter.
2. Setting the code on the receiver:
 - a. Slide the code switches to the same positions as set on your transmitter (Fig. B).

NOTE: The remote and receiver depicted in images may look different than your actual product.



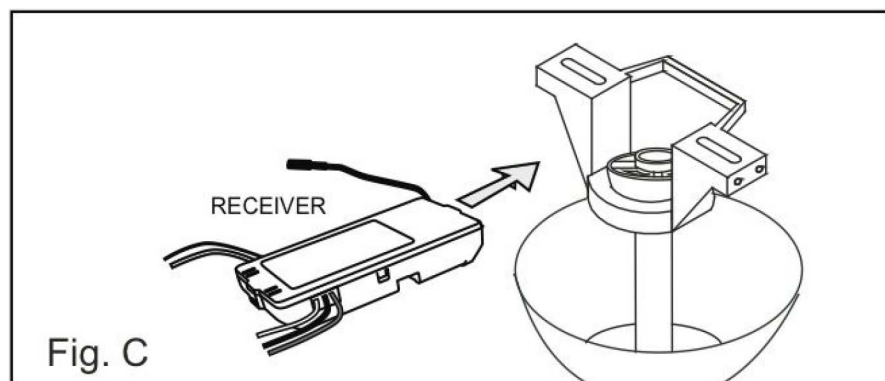
If you will be installing the receiver in your fan, please proceed to page 2.

INSTALLING RECEIVER IN THE CEILING FAN (Canopy Receiver only)

WARNING: High voltage! Household electrical power can cause serious injury or death. Disconnect the source of electrical power to the ceiling fan by removing the fuse or switching off the circuit breaker.

Installing receiver in fan:

1. Remove the ceiling fan canopy from the mounting bracket.
2. Disconnect the existing wiring between the ceiling fan and supply at the electrical junction box. If you already have a receiver installation (and are replacing it), please disconnect all wires to it.
3. Lay the black antenna wire on top of the receiver, and put the receiver in the mounting bracket (Fig. C).
4. Make the connections as follows, using the wire nuts supplied (Fig. D).



CONNECT

Green fan wire

Red receiver wire (AC IN L)

White receiver wire (AC IN N)

White receiver wire (TO MOTOR N)

Black receiver wire (TO MOTOR L)

Blue receiver wire (FOR LIGHT)

TO

Bare supply wire

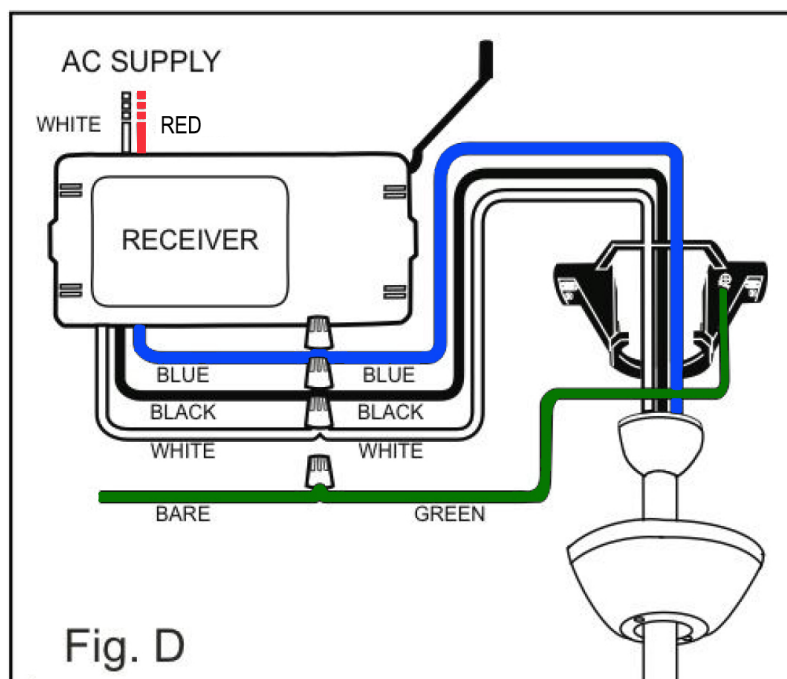
Black supply wire

White supply wire

White fan wire

Black fan wire

Blue lights wire



5. Push all connected wires up into junction box.
6. Reinstall the canopy on the mounting bracket.
7. Restore the electrical power