

## **USER'S MANUAL**

### **Kids ATV Quad Ride-On Car Toy**

THIS INSTRUCTION BOOKLET CONTAINS **IMPORTANT** SAFETY INFORMATION. PLEASE READ AND KEEP FOR FUTURE REFERENCE.

--	--

---

# Contact Us!

## **Do NOT return this item.**

Contact our friendly customer service department for help first.



## Before You Start

- ⚠ Please read all instructions carefully.
- ⚠ Retain instructions for future reference.
- ⚠ Separate and count all parts and hardware.
- ⚠ Read through each step carefully and follow the proper order.
- ⚠ We recommend that, where possible, all items are assembled near to the area in which they will be placed in use, to avoid moving the product unnecessarily once assembled.
- ⚠ Always place the product on a flat, steady and stable surface.
- ⚠ Keep all small parts and packaging materials for this product away from babies and children as they potentially pose a serious choking hazard.



---

# CH9955

## Baby Ride On Car Install & Operation Manual

- Slow start
- The simulation scooter model
- Foot forward backward function
- Radio Function
- Executive standard: F963;

The picture in this manual is to show the product operation and structure, please follow the real product only if any difference between picture and product happens.

There must be chance not to inform you on time to improve the product result from appearance or structure, please be understood.



Please read this manual carefully before play the product, it tells you the right way for operation and install to avoid any possible hurt to your kids.  
Please keep this manual and put it in a place where is easy to get.

### Specification

---

Item	Specification
Batteries	12V
Motor	12V
Age	3-7 years old
Max Weight	77 LBS
Dimension	42" x 25.5" x 29"
Speed	High- speed:5KM/H Low-speed:2.8KM/H
Play Time	1-2 hours / recharging time 8-12hours
Charger	12V

Assembly By Adult Only

Please follow real product, Photo for reference only

## TOOLS REQUIRED



77LBS



2 PERSON  
ASSEMBLY



APPROXIMATELY  
45 MIN.  
ASSEMBLY

## HARDWARE

1

Large gasket



1 PC

2

M4\*12mm  
SCREW



1 PCS

3

WASHER



10PCS

4

M10 NUT



7 PCS

## PARTS

A

Chair



1 PC

B

CHARGER



1 PC

C

FRONT WHEEL



2 PCS

D

REAR WHEEL



2 PCS

E

HUB CAP



4 PCS

F

GEAR BOX L / R



2 PCS

G

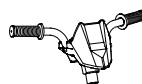
Anti-collision beam



2 PCS

H

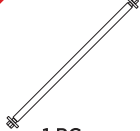
Headstock



1 PC

I

REAR AXLE



1 PC

J

Steering rod



1 PC

K

Steering bracket

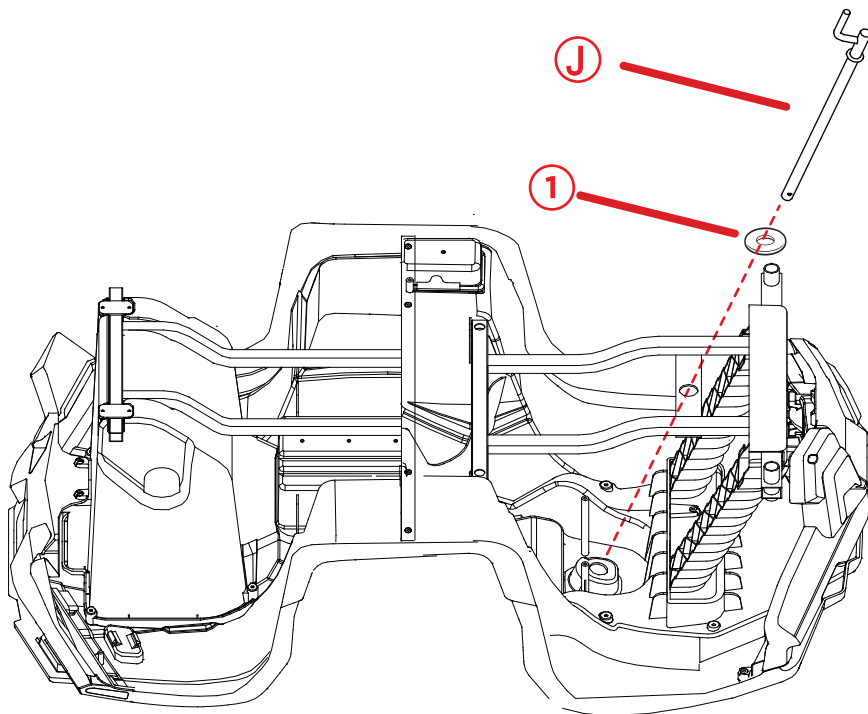


1 PC

---

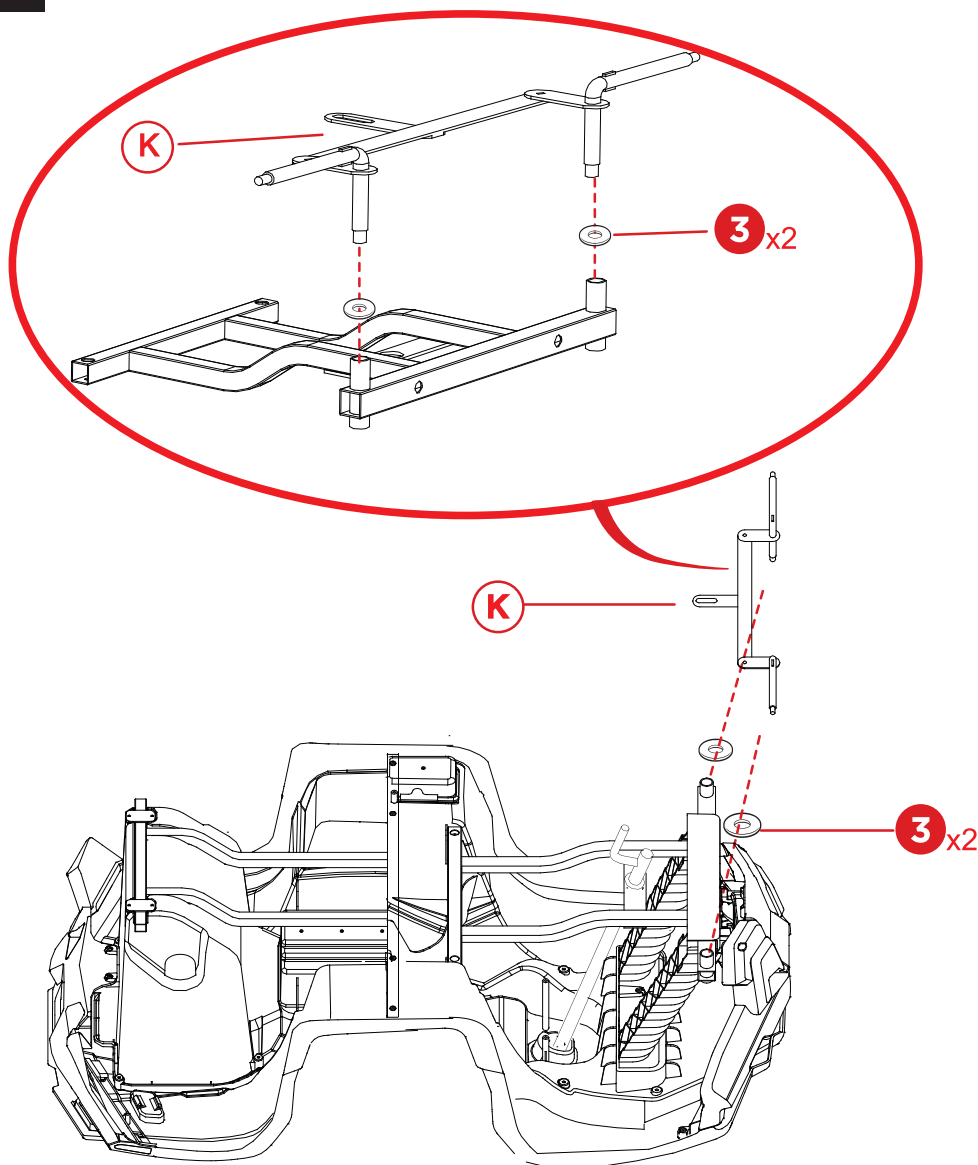
**1**

The large gasket and steering rod are inserted into the body in turn.

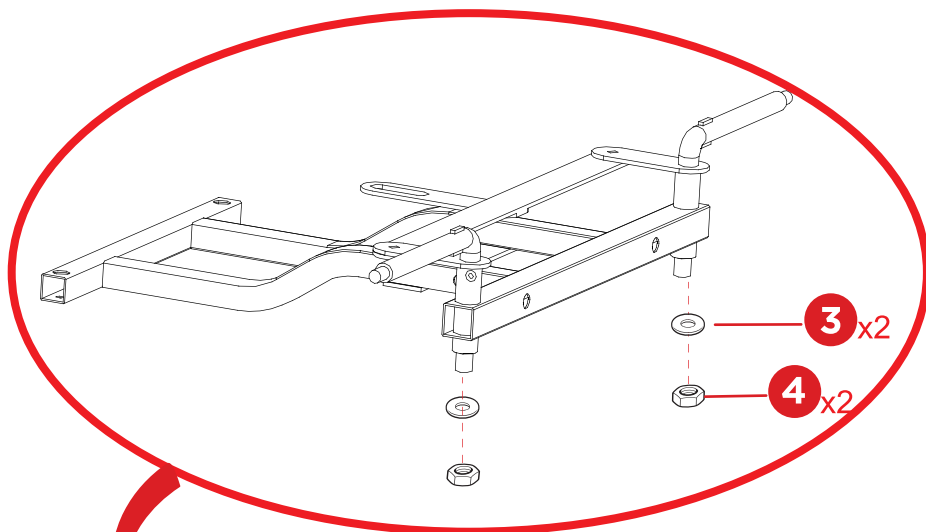


2

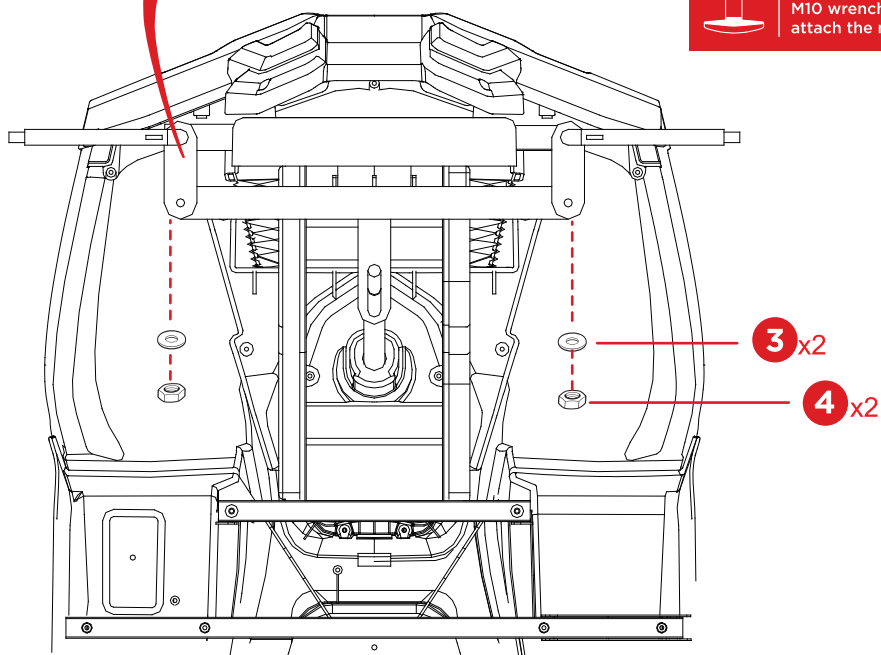
Turn gasket and steering bracket into square pipe



### 3 Lock Steering Bracket Gasket Nut Fixation



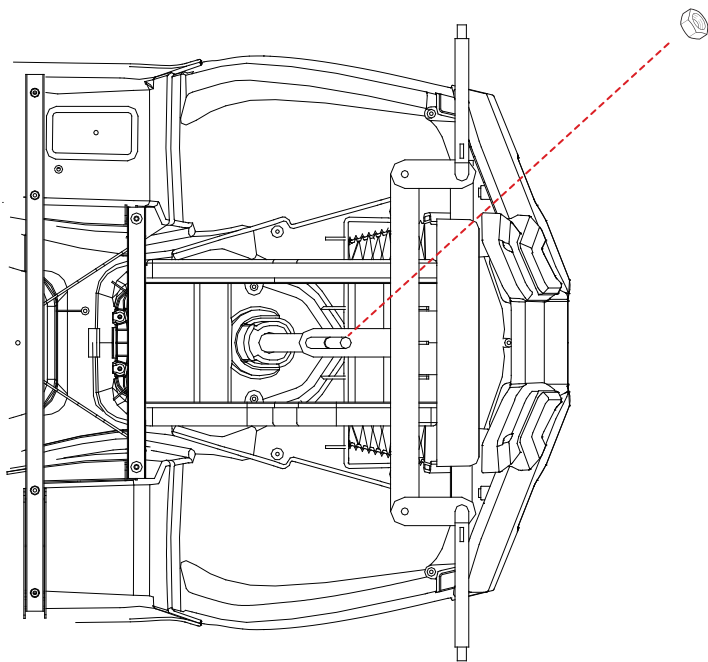
Use the provided  
M10 wrench to  
attach the nuts.



---

4

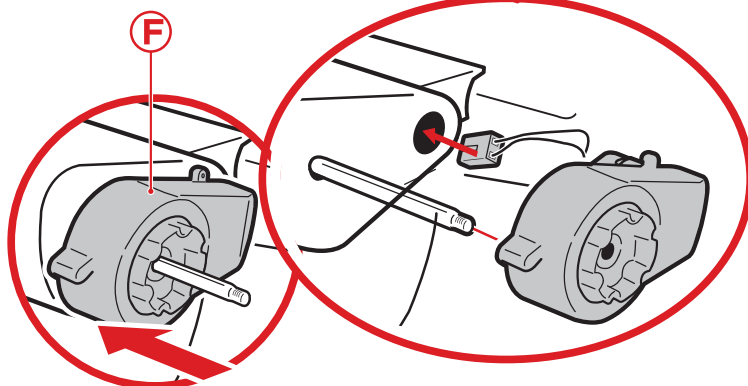
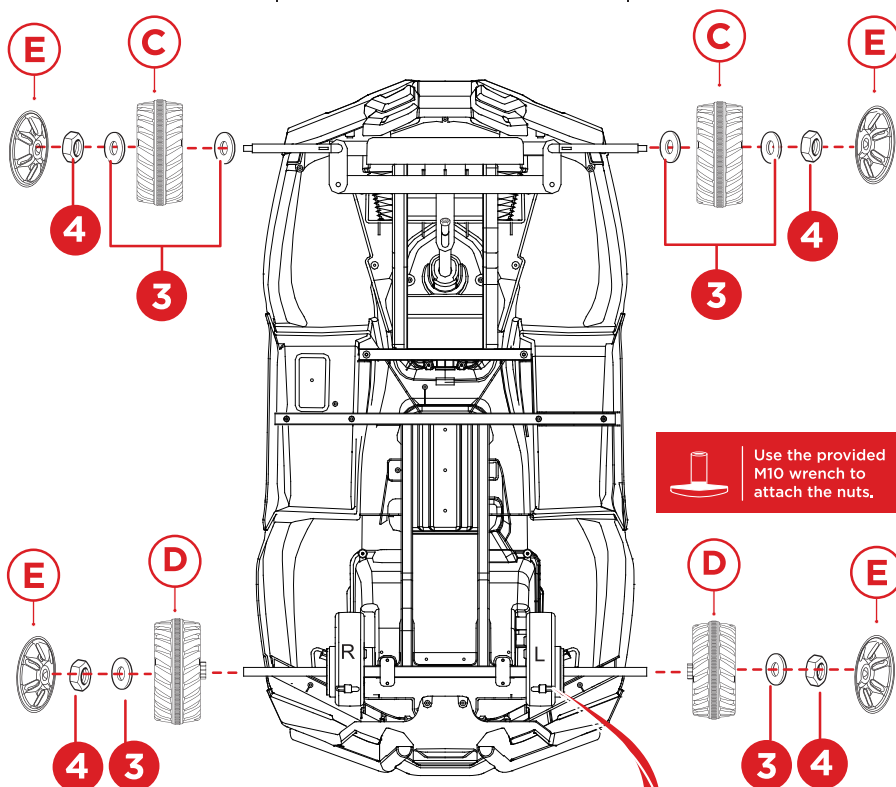
Lock nut fixed with wrench



Use the provided  
M10 wrench to  
attach the nuts.

5

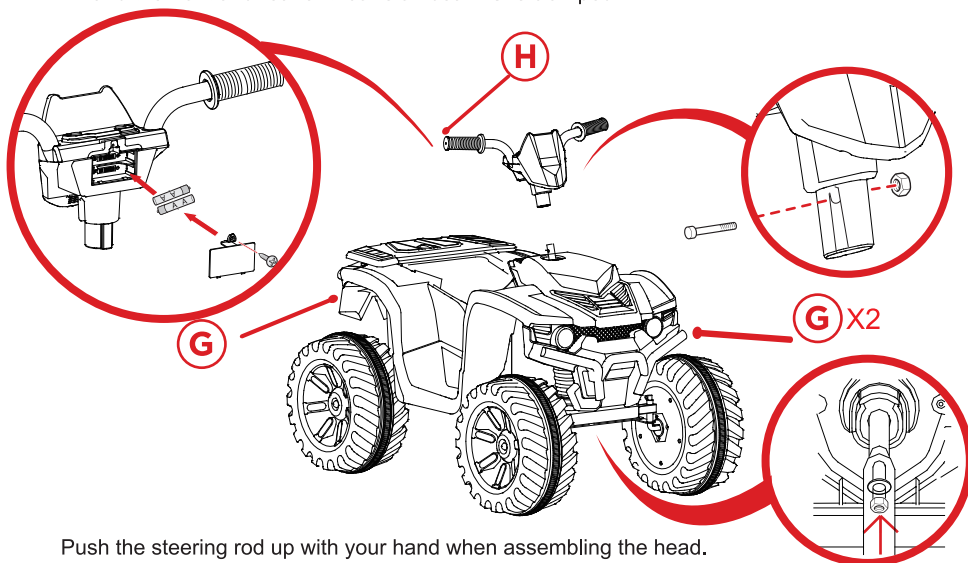
Put the gasket, front wheel, gasket and nut into the front axle in turn.  
Fix the nut with the plate hand, and then fix the wheel cover on the wheel.



Put the rear wheel, gasket and nut into the rear axle in turn.  
Fix the nut with a wrench, and then fix the wheel cover on the wheel.

6

Head H is equipped with 2 AA batteries. Lock the battery cover screw and fix it. The head H is clamped into the steering rod, the screw nut is fixed, and the front and rear anti-collision beam G is clamped.

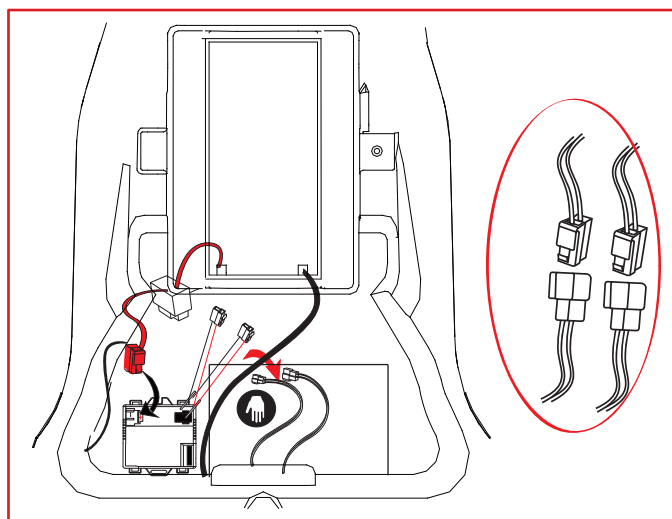


Push the steering rod up with your hand when assembling the head.

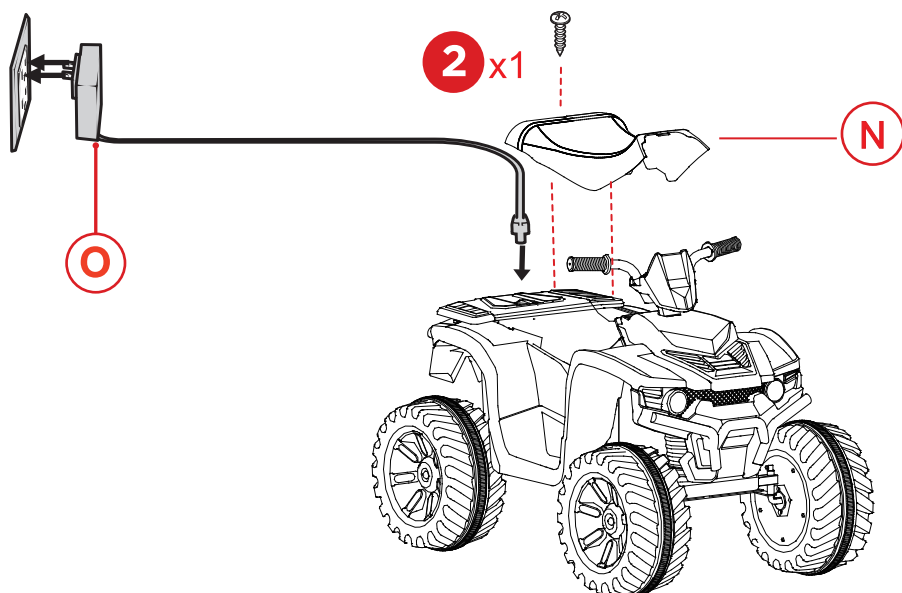
## PRODUCT ASSEMBLY

7

Remove the motor wire from the pocket by hand. Insert the motor wire and lock the seat N with the power cord.



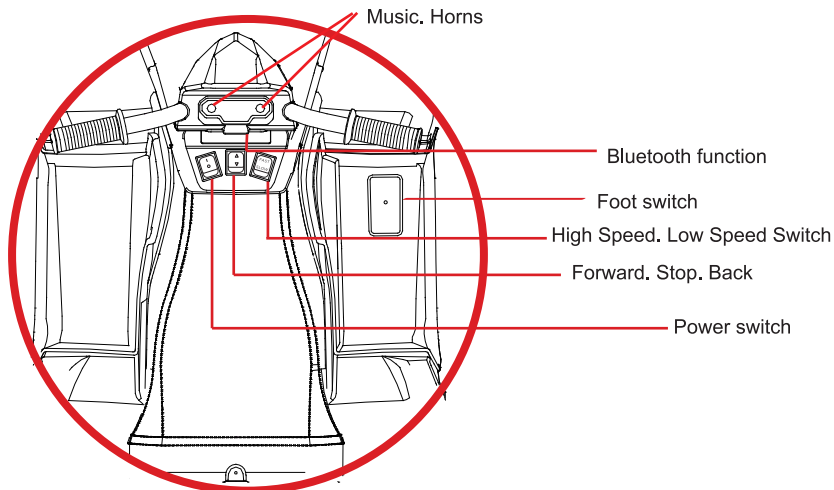




Open the tank cover. Insert the charging terminal for charging.

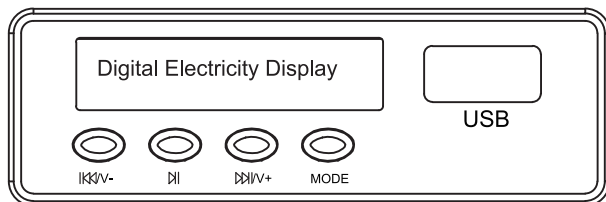
### DASHBOARD DIAGRAM

Step on the pedal. Back up. Loosen the pedal to slow down and stop.



---

## DASHBOARD DIAGRAM



### Functional description

- **MODE:** Switching mode. 1. Radio. 2. Bluetooth. 3. Music
- **⏮/V-:** 1. Short press to play the previous song. 2. Long press to decrease volume
- **⏪/V+:** 1. Short press to play the next song. 2. Long press to increase volume
- **⏩:** 1. Short press to pause/playback. 2. Radio Mode: Press 1 second to automatically search for stations.



**WARNING:** CHOKING HAZARD-Small parts.  
Not for children under 3yrs.

To reduce the risk of injury, adult supervision is required. Never use in roadways, near motor vehicles, on or near steep inclines or steps, swimming pools or other bodies of water; always wear shoes, and never allow more than one rider

The battery on the vehicle is not replaceable.

Do not mix old and new batteries.

Do not mix alkaline, standard (carbon-zinc), or rechargeable batteries.

Not to be used in traffic.

## Troubleshooting

<i>Type</i>	<i>Causes</i>	<i>Solutions</i>
The car doesn't move.	1. The battery voltage is too low; 2. Electrical protection; 3. The switch isn't operated properly; 4. The battery connectors drop off; 5. Abnormal battery; 6. Electrical damage; 7. Motor failure;	Charge the batteries fully; Stop for a few minutes and restart ; Reinsert; Replace with new battery; Contact maintenance personnel for further repair ; Contact maintenance personnel for further repair ;
The battery can't be charged;	1. The battery connectors drop off; 2. The battery charger isn't powered on ; 3. The charger is damaged;	Plug in again; Plug in again; replace the charger;
Short working duration;	1. The battery runs off; 2. The battery is out of service life;	Fully charge the battery; Replace the battery;
Slight noise and heat during charging process;	1. Normal chemical reactions	Normal;
Slow running speed;	1. The battery is out of service life 2. The battery runs off 3. Overload 4. Uneven pavement	Replace the battery; Fully charge the battery again; Reduce weight to 77lbs or less; Operate on a flat ground;
Gearbox noise;	Gear damage	Contact maintenance personnel for further repair
Jitter during moving process;	1. Poor contact of motor cable. 2. Short-circuited motor.	Reconnect; Contact maintenance personnel for further repair;
The car runs without voice;	1. Steering wheel connector is not plugged properly	Reconnect;
The car can't stop;	1. Electrical damage	Contact maintenance personnel for further repair;



## **WARNING**

- For safe driving, please kindly pay attentions to the following warning matters:
- The product must be assembled and adjusted by adult, please keep children away from moving parts.
- The product doesn't apply to 3 years and younger children due to internal small parts!
- During driving, a child must be fixed by seat belt properly. Do not close to any fire!
- Any child must be supervised by adult while using the product and such the adult caregiver should not leave during driving process.
- Do not allow your children to stand or play on the foot pedal or in the electric car.
- The battery must be charged only by adult. Please charge the product before using!
- To avoid any harm to children, please keep plastic bags and other packaging materials away from children! Such the materials may cause suffocation!
- It is prohibited to use any parts from other manufacturers.
- The charger should not be played as a toy.
- The vehicle maximum load weight is 77lbs , and please do not use on overload.
- The product applies to children at 3-7years old
- The toy should not be connected to excessive powers (more than the quantity specified herein), and it should not be operated during charging process.
- must with the protection device, can't use as traffic tools.
- this toy without braking device.

### **Instructions for remote controller batteries**

- All batteries should be inserted with the correct polarity.
- Non-rechargeable battery should not be charged, please remove any running-off battery from the toy.
- Do not use old and new batteries together, or mix different types of batteries.
- Power terminals should not be short-circuited
- Any rechargeable battery must only be charged under adult's supervision.  
Rechargeable batteries should be removed from the toy before charging.

### **Precautions for charging**

- Before the initial using, the electric car batteries must be charged for 18 hours, thus to avoid permanent damage to the battery, otherwise, they will not be repaired. Insert the charger DC plug into the charging jack, and then plug the charger in power socket.
- After the product is operated each hour, it should be promptly charged, the normal charging time is 8-12 hours,
- And each charging time should not exceed 20 hours. In the charging process, it is a normal phenomenon the battery or charger becomes hot (less than 60 centigrade):
- Connect; when any water exist in the car, it is prohibited to charge, or it may cause short circuit.
- Only the original charger and battery with electric car must be charged or used to avoid any damage to the charger, battery or short circuit. When the electric car is standby for a long time, it should be charged at least once a month.

---

## Precautions for operations

---

- Before using, please check if various components are mounted properly and connected solidly.
- Do not operate in any streets, roads, slopes, ditches and other hazardous environment.
- Please do not operate on any smooth ground, such as marble and tiles.
- Do not switch between forward and backward during the moving process of electric car; do not allow your child to stand on the seat.
- Please do not modify the car's circuit or mount any additional electric device. Remote controller, and electric car should not be exposed to the rain or used in the water, Do not pour water or other liquids in the car or soak in water in other improper operating manner; please keep away from the fire source, in order to avoid circuit damage.
- When any obstacle appears, remove your child from the electric car, until the car goes cross the obstacle.
- Do not operate the product indoors to avoid furniture damage and children injury.
- When the remote controller battery is lack of power, the vehicle will be remotely controlled to move forward only, but not rightward / leftward, and the remote control distance becomes short, and the car is jittered, etc., please immediately replace the battery! When the acousto-optic battery is lack of power, the sound and light functions will be disenabled, but other functions are still normal.
- Replace the acousto-optic batteries immediately. The product should be only ridded by one person, and can't be overloaded; the maximum load is 35 KG. after using, please turn off the power switch; if it is to be standby for a long-time, the battery connector should be unplugged.
- ∴ Notes: The product images, features, and content are used only for reference, and the product in kind shall prevail.

## Maintenances

---

- To prevent your baby from accidental injury, please inspect and maintain the car regularly.
- Please check if the attached components are complete, and please don't hesitate to contact us ASAP if find loss of quantity.
- Regularly check existence of any loose screws and damaged parts.
- Each component should be checked before installation or use,
- As for disassembly, please operate carefully in accordance with the manual, thus to avoid unnecessary damage.
- Please regularly check if the product and the charger are in good conditions, if any wires, plugs, and housings are damaged; any damaged should be replaced and repaired to intact.
- The product should be periodically cleaned, and please do not clean it with water thus to avoid any damage to electric elements; the product should be cleaned with a dry cloth.