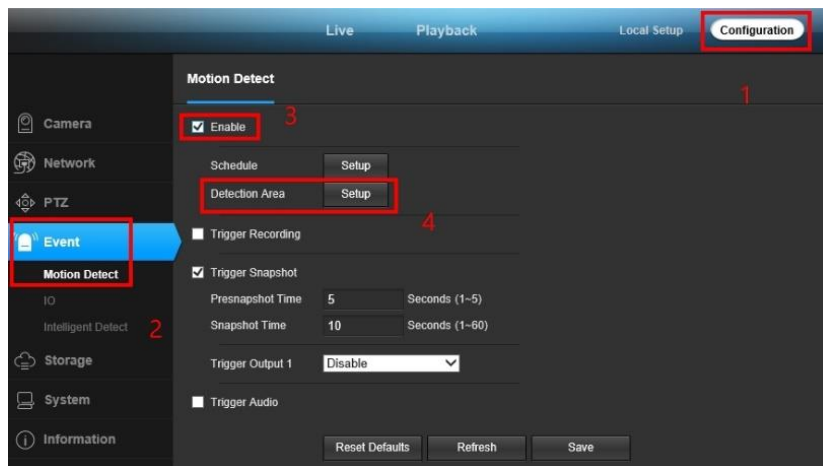


# MOTION DETECTION SETUP GUIDE:

## DGM5107T, DGM5407T, DGM5547T, and DGM5447T.

Motion Detection function is a feature present in all models of our starlight 5MP IP models, in order to activate and configure this feature please refer to the below steps:

1. Go to the CONFIGURATION page of the camera.
2. Go to EVENT and then to MOTION DETECT.
3. Make sure to check the ENABLE box in order to activate this feature.
4. In order to adjust the area of motion detection click on the SETUP button next to DETECTION



5. After clicking on the SETUP button, the DETECTION AREA page will come up.
  - You may add a motion area by dragging from left to right, or you may remove a motion area by dragging from right to left.
  - You may adjust relevant settings to the detection area with the options on the right.
6. After all changes have been made make sure to press the button OK to save them.

