

FOR PROFESSIONALS



Cochlear™

# Bone conduction solutions

Product catalog



# Contents

1

## Osia® System

Osia® 2 and 2(I) Sound Processors.....	4
Osia Sound Processor accessories .....	5
Aqua+ .....	11
Surgical products .....	13
MRI products .....	16
Fitting Software .....	17
Osia Smart App .....	18
Training and demo products .....	19



Click on any category or item to  
navigate to the corresponding page

2

## Baha® System

Baha® 6 Max Sound Processor .....	22
Baha 5 SuperPower Sound Processor .....	23
Sound Processor accessories .....	24
Baha Start Sound Processor wearing options .	33
Surgical products .....	35
Fitting Software .....	39
Smart App .....	42
Training and demo products .....	43

3

## Bone conduction portfolio shared items

Sound Processor accessories .....	48
True Wireless™ devices .....	49
Surgical instrumentation .....	50
Surgical accessories .....	54
Training and demo products .....	55

# Osia<sup>®</sup> System

## Sound Processors ..... 4

Osia<sup>®</sup> 2 and 2(I) Sound Processors..... 4

## Sound Processor accessories... 5

Magnets ..... 5

Sound Processor covers ..... 6

Wearing option - Headband .....7

Safety Lines ..... 8

Other..... 9



Click on any category or item to  
navigate to the corresponding page

## Aqua+ .....11

Activity kit ..... 11

Accessories .....12

## Surgical products ..... 13

BI300 Implants .....13

OSI300 Implant.....14

OSI200 Implant.....15

## MRI products ..... 16

## Fitting Software .....17

## Osia Smart App ..... 18

## Training and demo products ... 19



Click here to return  
to the contents page

# Osia® Sound Processors

## Osia® 2 and 2(I) Sound Processors

The Osia 2 Sound Processor is compatible with the OSI200 Implant and the Osia 2(I) Sound Processor is compatible with the OSI300 Implant.

### **P1233400**

Osia 2 Sound Processor kit



### **P1900830**

Osia 2(I) Sound Processor kit



### **Included in the sound processor kit**

- Sound processor with programming cover
- Inner case
- Tamperproof tool
- Cover black
- Cover chocolate brown
- Cover sandy blonde
- Cover silver grey
- Cover slate grey
- Quality certificate

When ordering, specify your language requirements for the document pack. It contains important information such as the User Manual and the Warranty Card.

#### **NOTE**

Not all products are available in all markets. Product availability is subject to regulatory approval in respective markets. Images are not to scale.



# Osia Sound Processor accessories

## Magnets

Magnets and magnet tool compatible with the Osia 2 Sound Processor and the OSI200 Implant.



### P1631251

Osia 2 Sound Processor  
Magnet pack  
(strength 1), 1 pc



### P1631252

Osia 2 Sound Processor  
Magnet pack  
(strength 2), 1 pc



### P1631263

Osia 2 Sound Processor  
Magnet pack  
(strength 3), 1 pc



### P1631265

Osia 2 Sound Processor  
Magnet pack  
(strength 4), 1 pc



### P1631253

Osia 2 Sound Processor  
Magnet Tool



Magnets and magnet tool compatible with the Osia 2(I) Sound Processor and the OSI300 Implant.



### P1900472

Osia® 2(I) Sound Processor  
Magnet strength 1(I)



### P1900824

Osia 2(I) Sound Processor  
Magnet strength 2(I)



### P1900825

Osia 2(I) Sound Processor  
Magnet strength 3(I)



### P1900826

Osia 2(I) Sound Processor  
Magnet strength 4(I)



### P1900829

Osia 2(I) Sound Processor  
Magnet (I) Tool



#### NOTE

Not all products are available in all markets. Product availability is subject to regulatory approval in respective markets.  
Images are not to scale. Items in this product catalogue that carry the Nucleus or Baha name are also compatible with the Osia System.

# Osia Sound Processor accessories

## Sound Processor covers

Compatible with Osia 2 and 2(I) Sound Processors.



**P1244701**

Silver Grey, 2 pcs



**P1244702**

Slate Grey, 2 pcs



**P1244703**

Black, 2 pcs



**P1244705**

Sandy Blonde, 2 pcs



**P1244706**

Chocolate Brown, 2 pcs



# Osia Sound Processor accessories

## Wearing option - Headband

Compatible with Osia 2 and 2(I) Sound Processors. Place sound processor(s) inside Headband pocket(s) to provide additional retention support, if needed, during physical activity.

### **P1434787**

Cochlear Headband  
L, Black

### **P1434786**

Cochlear Headband  
M, Black

### **P1434780**

Cochlear Headband  
S, Vanilla

### **P1434785**

Cochlear Headband  
S, Black

### **P1533353**

Cochlear Headband  
S, Grey

### **P1434779**

Cochlear Headband  
XS, Vanilla

### **P1434783**

Cochlear Headband  
XS, Black

### **P1434782**

Cochlear Headband  
XS, Grey



- Size Large is designed for an average head circumference of 58 cm.
- Size Medium is designed for an average head circumference of 54 cm.
- Size Small is designed for an average head circumference of 50 cm.
- Size Extra Small is designed for an average head circumference of 47 cm.

# Osia Sound Processor accessories

## Safety Lines

Compatible with Osia 2 and 2(I) Sound Processors.



21 cm

**Z467062**

Cochlear Nucleus® Safety Line  
2 pieces



26 cm

**P742062**

Cochlear Safety Line (Long)  
2 pieces



**P789715**

Cochlear Safety Line (Short Double loop)  
Brown

**P789713**

Cochlear Safety Line (Short Double loop)  
White

**P743011**

Cochlear Safety Line (Short Double loop)  
Black

### NOTE

Not all products are available in all markets. Product availability is subject to regulatory approval in respective markets.  
Images are not to scale. Items in this product catalog that carry the Nucleus name are also compatible with the Osia System.



# Osia Sound Processor accessories

## Other

Compatible with Osia 2 and 2(I) Sound Processors.



### **P1247104**

Osia 2 Inner case



### **P1612909**

Osia 2 Sound Processor Button  
15 pcs



### **P1244690**

Osia 2 Battery door  
3 pcs

#### **NOTE**

Not all products are available in all markets. Product availability is subject to regulatory approval in respective markets.  
Images are not to scale. Items in this product catalogue that carry the Nucleus or Baha name are also compatible with the Osia System.

# Osia Sound Processor accessories

## Other

Compatible with Osia 2 and 2(I) Sound Processors.



### **P1343785**

Tool kit (includes Programming cover, Tamperproof tool)



### **P793406**

Cochlear Softwear™ Pad, 20 pcs

### **P793408**

Cochlear Softwear Pad, 5 pcs



### **P1343629**

CS45 Programming cable  
long blue



### **P1343630**

CS45 Programming cable  
long red

# Osia Sound Processor Aqua+\*

## Activity kit

Compatible with Osia 2 and 2(I) Sound Processors.

### Included in the kit

- Two Osia 2 Aqua+
- Cochlear Safety line
- Cochlear Headband
- Recommended batteries to use with the Aqua+
- Activity kit case
- Osia 2 Aqua+ User Manual



\* The Cochlear Osia 2 and 2(I) Sound Processors with Aqua+ are dust and water resistant to the level of IP68 of the International Standard IEC60529 when used with LR44 alkaline or nickel metal hydride disposable batteries. This water protection rating means that the sound processor with the Aqua+ can be continuously submerged under water to a depth of up to 3 meters (9 feet and 9 inches) for up to 2 hours. Refer to the relevant User Guide for more information.

# Osia Sound Processor Aqua+

## Accessories

Compatible with Osia 2 and 2(I) Sound Processors.



**Z467062**

Cochlear Nucleus Safety Line



**P742062**

Cochlear Safety Line (Long)



**P743011**

Cochlear Safety Line (Short double loop) Black

**P789713**

Cochlear Safety Line (Short double loop) White

**P789715**

Cochlear Safety Line (Short double loop) Brown



**P740569 Activity kit case**

Included in the Osia 2 Aqua+ Activity kit

### NOTE

Not all products are available in all markets. Product availability is subject to regulatory approval in respective markets. Images are not to scale.



**P1302699**

Osia 2 Aqua+ (2 pcs)



**P1434787**

Cochlear Headband L, Black

**P1434786**

Cochlear Headband M, Black

**P1434780**

Cochlear Headband S, Vanilla

**P1434785**

Cochlear Headband S, Black

**P1533353**

Cochlear Headband S, Grey

**P1434779**

Cochlear Headband XS, Vanilla

**P1434783**

Cochlear Headband XS, Black

**P1434782**

Cochlear Headband XS, Grey

# Osia System surgical products

## BI300 Implants

The BI300 Implant is compatible with both the OSI200 and OSI300 Implants.

### Cochlear BI300 Implants and Cover screw\*

**NOTE:** The cover screw conical is only compatible with the BI300 implants.

The BI300 Implant osseointegrates with the bone.



**92128**

BI300 Implant,  
3 mm



**92129**

BI300 Implant,  
4 mm



**92136**

Cover screw  
conical

\* All sterile products are for single use only..

# Osia System surgical products

## OSI300 Implant

The Osia OSI300 Implant is only compatible with a Cochlear B1300 Implant and a Cochlear Osia 2(I) Sound Processor.



**P1772248**

Osia OSI300 Implant



Click for Osia System surgical instrumentation on page 50

## Accessories (sterile) for OSI300



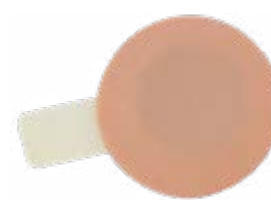
**P1773917**

Cochlear Magnet Cassette



**P782484**

Cochlear Non-Magnetic Cassette



**S15249**

Disk Retainer

### NOTE

These accessories are not required for standard surgery. All sterile products are for single use only. Not all products are available in all markets. Product availability is subject to regulatory approval in respective markets. Images are not to scale. Items in this product catalog that carry the Nucleus or Baha name are also compatible with the Osia System.

# Osia System surgical products

## OSI200 Implant

The Osia OSI200 Implant is only compatible with a Cochlear B1300 Implant and a Cochlear Osia 2 Sound Processor.

Cochlear will cease sale of the OSI200 Implant on June 1, 2024. We will continue to support current recipients and recommend professionals use the OSI300 Implant for new patients.



**P1170466**

OSI200 Implant

---

## Accessories (sterile) for OSI200



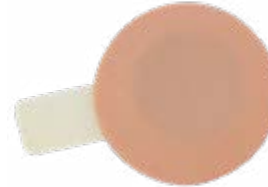
**P1620873**

Cochlear Sterile  
Replacement Magnet



**P1620901**

Cochlear Sterile  
Non-Magnetic Plug



**S15249**

Disk Retainer

### NOTE

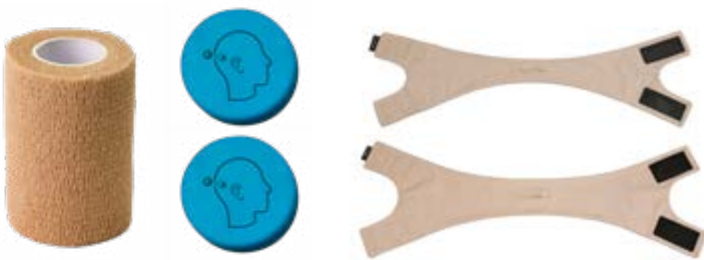
These accessories are not required for standard surgery. All sterile products are for single use only. Not all products are available in all markets. Product availability is subject to regulatory approval in respective markets. Images are not to scale. Items in this product catalog that carry the Nucleus or Baha name may also be compatible with the Osia System.



# Osia System MRI products

## MRI Kit

Compatible with the OSI100 and OSI200 Implants.



### **P1890818**

Cochlear Osia MRI Kit

**NOTE**

United States only



### **P773147**

Cochlear Nucleus Implant Bandage and Splint Kit for MRI

**NOTE**

Canada only

For additional information on MRI guidelines for the Osia System please view [www.cochlear.us/mri](http://www.cochlear.us/mri) in the United States, or [www.cochlear.com/ca/en/professionals/resources-and-training/mri-guidelines](http://www.cochlear.com/ca/en/professionals/resources-and-training/mri-guidelines) in Canada.

**NOTE:** Regulatory approval and availability of the MRI Kit differs in respective markets. Please contact your Cochlear representative for further information.

**NOTE**

Not all products are available in all markets. Product availability is subject to regulatory approval in respective markets. Images are not to scale.

# Osia System Fitting Software

## Osia Fitting Software 2

### Osia Fitting Software (OFS) Version 2.1

The OFS 2.1 User Guide is distributed embedded in the software, and also available at [www.cochlear.com/global/en/manuals](http://www.cochlear.com/global/en/manuals).



### P1348428 – Osia Fitting Software 2

Available for download from Cochlear Software Distribution System (CSDS)

Included:

- OFS Version 2.1
- OFS 2.1 User Guide (multilingual)
- OFS 2.1 User Guide (United States and Canada)

### P1593077 – Osia Fitting Software 2 (Veterans Affairs)

Available for download from CSDS.

Included:

- OFS Version 2.1 (.msi version)
- OFS 2.1 User Guide (Veterans Affairs)

### Programming Cables:

#### P1343629

CS45 Programming cable long blue

#### P1343630

CS45 Programming cable long red

# Osia Smart App

## Compatible with Osia 2 and 2(I) Sound Processors

The Osia Smart App allows the user to control and monitor their Osia 2 and 2(I) Sound Processor directly from their iPhone®, Apple Watch® or Android™ smartphone.

The app also provides functionality for personal customization of sound and the ability to locate a lost sound processor.

For more information and support, see [www.osiasmartapp.com](http://www.osiasmartapp.com).

For information regarding Cochlear's Sound Processors, operating systems and devices that are compatible with Cochlear's range of Smart Apps, Apple or Android devices, visit [www.cochlear.com/compatibility](http://www.cochlear.com/compatibility).



Osia Smart



**Download from App Store and Google Play**

### NOTE

Not all products are available in all markets. Product availability is subject to regulatory approval in respective markets. Images are not to scale. Items in this product catalogue that carry the Nucleus or Baha name are also compatible with the Osia System.

# Osia System training and demo products



## P1571591

½ Skull model with soft tissue

For surgical training. The tray is not included and must be ordered separately from Phacon.



## P1574901

OSI200 Demo Implant

Non-functioning demo implants and fixation screws. Contains one fixation screw. They have a space to place the Dummy BI300 Implant 4 mm (ordered separately).



## P1772347

OSI300 Demo Implant

Non-functioning demo implant and fixation screws. Contains two fixation screws. It has a space to place the Dummy BI300 Implant 4 mm (ordered separately).



## 92150

Dummy BI300  
Implant 4mm

# Osia System training and demo products



## **P1343783**

Osia 2 Sound Processor Dummy  
base with a magnet

## **P2039265**

Osia 2(I) Sound Processor Dummy  
base with a magnet



## **FUZ374**

Osia System Experience Kit box -  
Products may be ordered separately

Includes 1 Osia 2(I) Sound Processor dummy,  
5 Sound Processor color covers (1 of each color), 1  
Aqua+ and 1 OSI300 Demo Implant.

## **NOTE**

Not all products are available in all markets. Product availability is subject to regulatory approval in respective markets.  
Images are not to scale. Items in this product catalogue that carry the Nucleus or Baha name are also compatible with the Osia System.

# Baha System

## Sound Processors ..... 22

Baha 6 Max Sound Processor.....	22
Baha 5 SuperPower Sound Processor.....	23

## Sound Processor accessories.. 24

Baha 6 Max Sound Processor.....	24
Baha 5 SuperPower Sound Processor.....	25
Baha Connect System .....	30
Baha Attract System.....	31
Other.....	32



Click on any category or item to  
navigate to the corresponding page

## Baha Start Sound Processor wearing options..... 33

Baha Softband.....	33
Baha SoundArc™ .....	34

## Surgical products ..... 35

Baha Connect System .....	35
Baha Attract System.....	38

## Fitting Software ..... 39

Baha Fitting Software 6.....	39
Baha Fitting Software 5.....	40

## Smart App ..... 42

## Training and demo products ... 43

Skull models.....	43
Baha 6 Max Sound Processor.....	44
Baha 5 SuperPower Sound Processor.....	45
Dummy implants, abutments and magnets ...	46



Click here to return  
to the contents page

# Baha® Sound Processors

## Baha® 6 Max Sound Processor

Included in the order:

- Sound processor
- Abutment cover
- Battery multi-pack
- Cleaning kit
- Safety line
- Test rod
- Document pack



**P1668389** Blonde



**P1668390** Black



**P1668391** Silver



**P1668392** Brown



**P1668393** Copper



**P1668394** Mint

Cochlear Baha 6 Max Sound Processor, 2mm  
Extended Snap Coupling: **P1809177** Blonde,  
**P1809178** Black, **P1809179** Silver, **P1809180** Brown,  
**P1809221** Copper, **P1809222** Mint

Not all products are available in all markets.



# Baha Sound Processors

## Baha 5 SuperPower Sound Processor

Cochlear will cease sale of the Baha® 5 SuperPower for new systems and sound processor upgrades on August 1, 2024. We will continue to support current Baha 5 SuperPower recipients with parts, accessories, service and repairs.



### Sound processing unit



96001 Carbon



96002 Smoke



96003 Mocha



96004 Maize

### Actuator unit



95461 Carbon



95462 Smoke



95463 Mocha



95464 Maize

# Baha Sound Processor accessories

## Baha 6 Max Sound Processor

### Battery doors



**P1668404** Baha 6  
Max Battery Door -  
Tamper Resistant  
(including 3 battery  
doors, tool and  
sticker sheet)



**P1668436** Baha 6  
Max Battery Door,  
3 pcs  
(including 3 battery  
doors and tool)



**P1668427** Baha  
6 Max Battery  
Door, 10 pcs  
(including  
10 battery doors  
and tool)

# Baha Sound Processor accessories

## Baha 5 SuperPower Sound Processor

### Rechargeable batteries



**Standard**



**Carbon**

**Z285983** Standard

**Z285988** Compact



**Compact**



**Smoke**

**Z285984** Standard

**Z285989** Compact



**Mocha**

**Z285986** Standard

**Z285991** Compact



**Maize**

**Z285985** Standard

**Z285990** Compact

### Charging



**Z341685**  
Battery Charger



**Z342011**  
Charging Kit

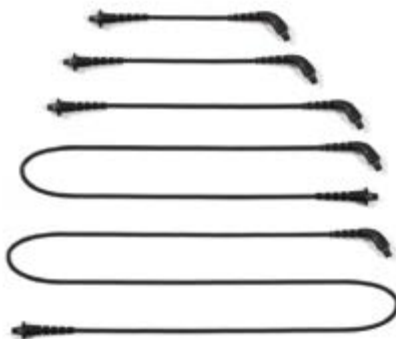
# Baha Sound Processor accessories

## Baha 5 SuperPower Sound Processor

### Cables

These are the recommended cables for Baha 5 SuperPower:

- 6cm, 8cm, and 11cm cables are for Same ear fittings
- 28cm cables are for Other ear fittings
- 50cm cables are for Body-worn fittings



**Carbon**

**Z299503** 6cm

**Z299507** 8cm

**Z299515** 11cm

**Z299519** 28cm

**95938** 50cm



**Smoke**

**Z299504** 6cm

**Z299508** 8cm

**Z299516** 11cm

**Z299521** 28cm

**95939** 50cm



**Mocha**

**Z299506** 6cm

**Z299513** 8cm

**Z299518** 11cm

**Z299525** 28cm

**95937** 50cm



**Maize**

**Z299505** 6cm

**Z299512** 8cm

**Z299517** 11cm

**Z299522** 28cm

**95936** 50cm

# Baha Sound Processor accessories

## Baha 5 SuperPower Sound Processor

### Earhook

For behind-the-ear  
(BTE).



**Z285994**  
Small, 3 pcs  
Fitting tool and 3  
fitting pins included  
(tamper resistant)



**Z285995**  
Medium, 3 pcs



**Z285996**  
Large, 3 pcs

### Snugfit

For behind-the-ear  
(BTE).



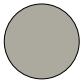
**Small**  
  
**Carbon**

**Z285998** Small

**Z285999** Medium

**Z286000** Large



**Medium**  
  
**Smoke**

**Z286001** Small

**Z299502** Medium

**Z299510** Large



**Large**  
  
**Mocha**

**Z299520** Small

**Z299524** Medium

**Z299523** Large



**Maize**

**Z299511** Small

**Z299514** Medium

**Z299509** Large

# Baha Sound Processor accessories

## Baha 5 SuperPower Sound Processor

### LiteWear™

For clip-on  
(Body-worn).



**Z327614** LiteWear™ Fixing Aids  
Includes: Alligator clip, safety pin, hook & loop.

**Z327613** LiteWear Case

### Earhook+

For under-the-ear  
(UTE).



**Medium**

**Large**



**Carbon**

**Smoke**

**Mocha**

**Maize**

**P771900** Medium

**P771901** Medium

**P771902** Medium

**P771903** Medium

**P771904** Large

**P771905** Large

**P771906** Large

**P771907** Large

# Baha Sound Processor accessories

## Baha 5 SuperPower Sound Processor

### Other accessories



**Z300304** Mic Lock



Microphone  
Protector  
Applicator with  
Removal Tool

**Z322658** 2 pcs

**Z354058** 4 pcs



**Z342010** Storage  
case



# Baha Sound Processor accessories

## Baha Connect System

### Abutment covers



**90744** Blonde



**90745** Black



**90746** Silver grey



**90747** Brown

# Baha Sound Processor accessories

## Baha Attract System

### SP Magnet and Baha SoftWear™ Pads\*

The SP Magnet includes Baha SoftWear™ Pads\* (6 pcs).

\*SP Magnet soft pads.



**95771** SP Magnet 1



**95772** SP Magnet 2



**95773** SP Magnet 3



**95774** SP Magnet 4



**95775** SP Magnet 5



**95776** SP Magnet 6



**94175** SP Magnet soft pads, 24 pcs  
Can be ordered separately (compatible with the Baha Attract Sound Processor Magnet).

### Color covers

The Color covers includes a centering pin for easy application.



**95190** Blonde, 3 pcs



**95191** Brown, 3 pcs



**95192** Silver, 3 pcs



**95193** Copper, 3 pcs



**96005** Maize, 3 pcs

### Case



**94125** End user case

# Baha Sound Processor accessories

## Other



**90711** Safety line



**95458** Baha  
Sound processor  
Cleaning kit



**P1316179** Cochlear  
Magnetic Battery  
Removal Tool



**92657** Screwdriver  
for Tamperproof  
battery doors

# Baha Start Sound Processor wearing options

## Baha Softband

The Baha Softband is available in both unilateral and bilateral models. It comes in one adjustable size to fit all.



**Unilateral**



**Bilateral**



**95809** Baha Softband soft pad, 6 pcs (compatible with the Baha Softband and SoundArc)



**Pink**

**95750** Unilateral

**95760** Bilateral



**Light blue**

**95751** Unilateral

**95761** Bilateral



**Dark blue**

**95752** Unilateral

**95762** Bilateral



**Brown**

**95753** Unilateral

**95763** Bilateral



**Black**

**95754** Unilateral

**95764** Bilateral



**Blonde**

**95755** Unilateral

**95765** Bilateral



**Red**

**95756** Unilateral

**95766** Bilateral



**Jungle**

**95757** Unilateral

**95767** Bilateral

# Baha Start Sound Processor wearing options

## Baha SoundArc™

The Baha SoundArc is delivered as unilateral and it is possible to make it bilateral by adding a second Connector disc (P807181).



**Baha SoundArc**

**P1324401** Extra Small (30.6cm)

**P807175** Small (31.5cm)

**P807176** Medium (33cm)

**P807177** Large (36cm)

**P807178** Extra Large (39cm)



**P807181**

Baha SoundArc  
Connector disc



**95809** Baha

Softband soft pad,  
6 pcs



**P1572994** Baha SoundArc  
Hair matching Color Kit

The item includes one pair of tips for each color.



**P1573011** Baha SoundArc Fun Color Kit

The item includes one pair of tips for each color.

# Baha System surgical products

## Baha Connect System

The BI300 Implant is used for Baha Connect two-stage surgery.

### Cochlear BI300 Implants and Cover screw\*

**NOTE:** The cover screw conical is only compatible with the BI300 implants.

The BI300 Implant osseointegrates with the bone.



**92128**

BI300 Implant,  
3 mm



**92129**

BI300 Implant,  
4 mm



**92136**

Cover screw  
conical

\* All sterile products are for single use only..

# Baha System surgical products

## Baha Connect System

### Baha Implants with DermaLock™ Abutments\*

Used for Baha  
FAST surgery.



**93329** BIA400  
Implant 4mm  
Abutment 6mm



**93330** BIA400  
Implant 4mm  
Abutment 8mm



**93331** BIA400  
Implant 4mm  
Abutment 10mm



**93332** BIA400  
Implant 4mm  
Abutment 12mm



**93338** BIA400  
Implant 4mm  
Abutment 14mm

### Baha DermaLock™ Abutments\*

Used for Baha  
two-stage surgery.



**93333** BA400  
Abutment 6mm



**93334** BA400  
Abutment 8mm



**93335** BA400  
Abutment 10mm

**NOTE:** The  
DermaLock™  
Abutments (BA400)  
are only compatible  
with the  
BI300 Implants.



**93336** BA400  
Abutment 12mm



**93337** BA400  
Abutment 14mm

\* All sterile products are for single use only..



# Baha System surgical products

## Baha Connect System

### Baha BIA300 Implants with Titanium Abutments\*

Used for Baha  
FAST surgery.



**92126** BIA300  
Implant 3mm  
Abutment 6mm



**92127** BIA300  
Implant 4mm  
Abutment 6mm



**92346** BIA300  
Implant 4mm  
Abutment 9mm

### Baha BA300 Titanium Abutments\*

The BA300 Series  
abutments are only  
compatible with  
the BI300 implants.



**92130** BA300  
Abutment 6mm



**92131** BA300  
Abutment 9mm



**93357** BA300  
Abutment 12mm

### Baha BA210 Titanium Abutments\*

**Note:** The BA210  
Series abutments  
are compatible  
with the Fixture  
ST Implants  
with hexagonal  
connection.



**92132** BA210  
Abutment 5.5mm  
for Fixture ST  
Implants



**92133** BA210  
Abutment 8.5mm  
for Fixture ST  
Implants

\* All sterile products are for single use only..

# Baha System surgical products

## Baha Attract System

### Cochlear BI300 Implants and Cover screw\*

**NOTE:** The cover screw conical is only compatible with the BI300 implants.

The BI300 Implant osseointegrates with the bone.



**92128**

BI300 Implant,  
3 mm



**92129**

BI300 Implant,  
4 mm



**92136**

Cover screw  
conical

### Baha BIM400 Implant Magnet\*

**NOTE:** The BIM400 Implant Magnet is only compatible with the BI300 Implants.



**93550**

BIM400 Implant  
Magnet

\* All sterile products are for single use only..

# Baha System Fitting Software

## Baha Fitting Software 6

### **Baha Fitting Software 6 (BFS) Version 6.1**

The BFS 6.1 User Guide is distributed embedded in the software and is also available at [www.cochlear.com/global/en/manuals](http://www.cochlear.com/global/en/manuals).



### **P1682914 – Baha Fitting Software 6**

Available for download from Cochlear Software Distribution System (CSDS)

Included:

- BFS Version 6.1
- BFS 6.1 User Guide (multilingual)
- BFS 6.1 User Guide (United States)
- BFS 6.1 Addendum to user guide  
Remote Assist

### **P1701584 – Baha Fitting Software 6 (Veterans Affairs)**

Available for download from CSDS.

Included:

- BFS Version 6.1 (.msi version)
- BFS 6.1 User Guide (Veterans Affairs)
- BFS 6.1 Addendum to user guide  
Remote Assist

# Baha System Fitting Software

## Baha Fitting Software 5

### **Baha Fitting Software (BFS) 5 Version 5.4**

The BFS 5.4 User Guide is distributed embedded in the software and is also available at [www.cochlear.com/global/en/manuals](http://www.cochlear.com/global/en/manuals).



### **Baha Fitting Software 5**

Available for download from CSDS

Included:

- BFS Version 5.4
- BFS 5.4 User Guide (multilingual)

### **Baha Fitting Software 5 (Veterans Affairs)**

Available for download from CSDS

Included:

- BFS Version 5.4 (.msi version)
- BFS 5.4 User Guide (Veterans Affairs)

# Baha System Fitting Software

## Baha Fitting Software 5 (continued)

### Baha Fitting Software 5 Product keys:

The product keys can be used if a restricted software version has been installed previously. The specific product key will only provide a specific type of access.

**NOTE:** As soon as a new product key is being entered, previous accessed content will be overwritten.

**P1325948** Product key-access to SoundArc

**P1325955** Product key-access all Baha 5 generation sound processors, excluding BA300 connection type

**P1325949** Product key-access all Baha 5 generation sound processors, excluding BA300 and SoundArc connection types

**P1325950** Product key-access all Baha 5 generation sound processors excluding SuperPower, excluding BA300 connection type

**P1325951** Product key-all Baha 5 generation sound processors and connection types excluding SuperPower, BA300 and SoundArc

**P1325952** Product key-all Baha 5 generation sound processors and connection types excluding SuperPower, DermaLock

**P1325953** Product key-all Baha 5 generation sound processors and connection types excluding SuperPower, DermaLock, SoundArc

**P1325954** Product key-access to BA300 and SoundArc

### Programming cables:

These articles can be ordered as spare parts when fitting a:

- Baha 5 Sound Processor
- Baha 5 Power Sound Processor
- Baha 5 SuperPower Sound Processor\*
- Baha 5 SuperPower Fitting adaptor required

**95948** Baha 5 SuperPower Fitting adaptor (9cm, 3.5in long)

**95386** Baha Programming cable CS44 short blue (50cm, 19.7in long)

**95387** Baha Programming cable CS44 short red (50cm, 19.7in long)

**95388** Baha Programming cable CS44 long blue (200cm, 78.7in long)

**95389** Baha Programming cable CS44 long red (200cm, 78.7in long)

# Baha Smart App

## Compatible with Baha 5 generation and Baha 6 Max Sound Processors

The Baha Smart App allows the user to control and monitor their Baha 5 generation Sound Processor and/or their Baha 6 Max Sound Processor directly from their iPhone, Apple Watch or Android smartphone.

The app also provides functionality for personal customization of sound and the ability to locate a lost sound processor.

For more information and support, see [www.bahasmartapp.com](http://www.bahasmartapp.com).

For information regarding Cochlear's Sound Processors, operating systems and devices that are compatible with Cochlear's range of Smart Apps, Apple or Android devices, visit [www.cochlear.com/compatibility](http://www.cochlear.com/compatibility).



Baha Smart



**Download from App Store and  
Google Play**

# Baha System training and demo products

## Skull models



**91153**

½ Skull model with soft tissue



**90644**

½ Skull model, plastic  
temporal bone

# Baha System training and demo products

## Baha 6 Max Sound Processor

### Demo sound processor



**P1668395**

Baha 6 Max Demo

**P1809223**

Baha 6 Max Demo, 2mm

### Demonstration equipment\*



**92612**

Test Rod



Baha Softband



**Click for Baha Softband on page 33**



Baha SoundArc



**Click for Baha SoundArc on page 34**



**P1668399**

Baha 6 Max Presentation

Kit Includes:

- Baha Color Guide
- Baha 6 Max Dummy
- Baha 6 Sound Processor Magnet Dummy



**P1668423**

Baha Color Guide



# Baha System training and demo products

## Baha 5 SuperPower Sound Processor

### Demo sound processor



**96000**

Baha 5  
SuperPower  
Processing Unit  
Demo

### Dummy sound processor\*

Non functioning.

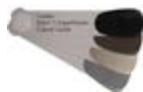


**95465**

Baha 5  
SuperPower  
Dummy

### Demonstration equipment

Note: For information about the Baha 5 SuperPower Demo kit please contact your local Cochlear representative.



**96051**

Baha 5 SuperPower  
Color Guide

# Baha System training and demo products

## Dummy implants, abutments and magnets

### Dummy implants and abutments\*



**92150**

Dummy BI300  
Implant 4mm



**92149**

Dummy BIA300  
Implant 4mm with  
Abutment 6mm



**93362**

Dummy BIA400  
Implant 4mm with  
Abutment 10mm



**93426**

King Size Dummy  
Implant 4mm with  
Abutment 10mm

### Test Rod



**92612**

Test Rod

### Demo Baha Connect System\*



**92151**

Snap trainer  
BIA300

### Dummy magnets for Baha Attract System\*



**93580**

Dummy BIM400  
Implant Magnet



**95821**

SP Magnet dummy\*

Note: The Dummy BIM400 Implant Magnet does not include an implant.

\* Not for clinical use

# Bone conduction shared portfolio items



Click on any category or item to  
navigate to the corresponding page

## **Sound Processor accessories... 48**

Accessories compatible with both  
Osia and Baha Sound Processors. .... 48

## **True Wireless™ devices ..... 49**

## **Surgical instrumentation ..... 50**

Osia System instrumentation ..... 50  
Baha Connect instrumentation ..... 51  
Baha Attract instrumentation ..... 52  
Drilling equipment. .... 53

## **Surgical accessories ..... 54**

Compatible with Osia and Baha Systems ..... 54

## **Training and demo products ... 55**



Click here to return  
to the contents page

# Sound Processor accessories

Compatible with both Osia and Baha Sound Processors



**742313**

Super Dri Aid



**2836**

Mini Super Dri Aid



**P1668419**

Cochlear Stickers



**Z339244**

Adhesive labels, 15 pcs

## NOTE

For information regarding the compatibility of Cochlear's Sound Processors with True Wireless devices, visit [www.cochlear.com/compatibility](http://www.cochlear.com/compatibility)

# True Wireless™ devices

Compatible with both Osia and Baha Sound Processors



**94771**

Cochlear Wireless Phone Clip



**94791**

Cochlear Baha® Remote Control 2



**P770848**

Cochlear Wireless Mini Microphone 2+



**94761**

Cochlear Wireless TV-Streamer

## NOTE

For information regarding the compatibility of Cochlear's Sound Processors with True Wireless devices, visit [www.cochlear.com/compatibility](http://www.cochlear.com/compatibility)

# Surgical instrumentation

## Osia System instrumentation

### Reusable instruments \*



**P1593725**  
Raspatorium  
/ Probe



**90469**  
Screwdriver  
Unigrip  
95mm



**90381**  
Machine  
Screwdriver  
Unigrip  
25mm



**P1582230**  
Implant  
inserter



**91116**  
Drill  
Indicator  
for WS-75  
and Osscora



**C9866**  
Multi  
wrench  
with ISO  
adapter†



**P1469690**  
Bone bed indicator 17mm

### Single-use instruments

#### Drills

NOTE: The Conical Guide drill has a removable spacer for drilling to different depths.



**93363**  
Conical guide drill  
3+4mm



**92140**  
Widening drill 3mm  
with countersink



**92141**  
Widening drill 4mm  
with countersink

#### OSI200 - Implant Template

NOTE: Two implant templates are needed in each surgery, one for use in the non-sterile field and one for use in the sterile field.



**P1291019**  
OSI200 Implant Template

#### NOTE

Images are not to scale.

All sterile products are for single use only. Not all products are available in all markets. Product availability is subject to regulatory approval in respective markets. Images are not to scale. Items in this product catalogue that carry the Nucleus or Baha name are also compatible with the Osia System.

\* Find Cochlear reprocessing instructions at [www.cochlear.us/surgicalguides](http://www.cochlear.us/surgicalguides). Excluding P1469690 Bone Bed Indicator for Osia, instrumentation purchased prior to May 17, 2023 is validated for reprocessing with BUN257 Cochlear Baha System Surgical Tools Reprocessing Guidelines.

† Reprocess using the Elos Pinol manufacturer instructions: <https://elosmedtech.com/IFU/>

# Surgical instrumentation

## Baha Connect instrumentation

### Reusable instruments\*



**P1593725**

Raspatorium  
/ Probe



**90469**

Screwdriver  
Unigrip  
95mm



**90381**

Machine  
Screwdriver  
Unigrip  
25mm



**P1582230**

Implant  
inserter



**91116**

Drill Indicator  
for WS-75  
and Osscora



**C9866**

Multi  
wrench  
with ISO  
adapter<sup>†</sup>



**P1582203**

Baha Indicator



**P1582229**

Abutment inserter



**P1582231**

Counter torque wrench

### Single-use instruments

#### Drills

**NOTE:** The Conical Guide drill has a removable spacer for drilling to different depths.



**93363**

Conical  
guide drill  
3+4mm



**92140**

Widening drill  
3mm with  
countersink



**92141**

Widening drill 4mm  
with countersink



**P806653**

Indicator for Baha 5  
SuperPower,  
Baha Connect System<sup>†</sup>

#### Biopsy Punch

#### Healing Cap & Wound Dressing

The Healing Cap is fully compatible with all Baha abutments.



**Y00022**

Biopsy Punch Ø 5mm



**95084**

Healing cap with  
plug Ø 30mm



**FUD021**

Allevyn Non-Adhesive  
Wound Care Dressing

#### NOTE

Images are not to scale.

All sterile products are for single use only. Not all products are available in all markets. Product availability is subject to regulatory approval in respective markets. Images are not to scale. Items in this product catalogue that carry the Nucleus or Baha name are also compatible with the Osia System.

\* Find Cochlear reprocessing instructions at [www.cochlear.us/surgicalguides](http://www.cochlear.us/surgicalguides). Excluding P1469690 Bone Bed Indicator for Osia, instrumentation purchased prior to May 17, 2023 is validated for reprocessing with BUN257 Cochlear Baha System Surgical Tools Reprocessing Guidelines.

<sup>†</sup> Reprocess using the Elos Pinol manufacturer instructions: <https://elosmedtech.com/IFU/>

<sup>‡</sup> Use when patients will be fit with a Baha 5 SuperPower.

# Surgical instrumentation

## Baha Attract instrumentation

### Reusable instruments\*



**P1593725**  
Raspatorium  
/ Probe



**90469**  
Screwdriver  
Unigrip  
95mm



**90381**  
Machine  
Screwdriver  
Unigrip  
25mm



**P1582230**  
Implant  
inserter



**91116**  
Drill Indicator  
for WS-75  
and Osscora



**C9866**  
Multi  
wrench  
with ISO  
adapter†



**P1582203**  
Baha Indicator



**P1578046**  
Bone bed indicator  
14mm



**94071**  
Implant Magnet  
Template



**95070**  
Soft Tissue  
Gauge 6mm

### Single-use instruments

NOTE: The Conical Guide drill has a removable spacer for drilling to different depths.



**93363**  
Conical guide  
drill 3+4mm



**92140**  
Widening drill  
3mm with countersink



**92141**  
Widening drill  
4mm with  
countersink



**P806693**  
Indicator  
for Baha 5  
SuperPower,  
Baha Attract  
System‡

#### NOTE

Images are not to scale.

All sterile products are for single use only. Not all products are available in all markets. Product availability is subject to regulatory approval in respective markets. Images are not to scale. Items in this product catalogue that carry the Nucleus or Baha name are also compatible with the Osia System.

\* Find Cochlear reprocessing instructions at [www.cochlear.us/surgicalguides](http://www.cochlear.us/surgicalguides). Excluding P1469690 Bone Bed Indicator for Osia, instrumentation purchased prior to May 17, 2023 is validated for reprocessing with BUN257 Cochlear Baha System Surgical Tools Reprocessing Guidelines.

† Reprocess using the Elos Pinol manufacturer instructions: <https://elosmedtech.com/IFU/>




‡ Use when patients will be fit with a Baha 5 SuperPower.



# Surgical instrumentation

## Drilling equipment\*

The following instrumentation is required for the Baha Attract surgical procedure.  
All instruments can be ordered individually.

Image	Part Name	Part Number
	Osscora Console	
	Osscora Foot Control	
	Osscora Handpiece	<b>91050</b>
	Osscora Motor with Cable 3.5m	<b>91054</b>
	Motor Protective Cover	<b>04032600</b>
	Power Cord	
	Irrigation tubing set 3.8m	<b>91061</b>
	Spray clip, 3 pcs (for Osscora handpiece)	<b>91891</b>
<i>Not pictured</i>	Irrigation stand	

### NOTE

Images are not to scale.

All sterile products are for single use only. Not all products are available in all markets. Product availability is subject to regulatory approval in respective markets. Images are not to scale. Items in this product catalogue that carry the Nucleus or Baha name are also compatible with the Osia System.

\* Find Cochlear reprocessing instructions at [www.cochlear.us/surgicalguides](http://www.cochlear.us/surgicalguides). Excluding P1469690 Bone Bed Indicator for Osia, instrumentation purchased prior to May 17, 2023 is validated for reprocessing with BUN257 Cochlear Baha System Surgical Tools Reprocessing Guidelines.

# Surgical accessories

Compatible with Osia and Baha Systems



**Z25017**

Retrieved Device Kit

## NOTE

Not all products are available in all markets. Product availability is subject to regulatory approval in respective markets.  
Images are not to scale.

# Training and demo products

Compatible with Osia and Baha Systems



**92150**

Dummy BI300 Implant 4mm

For surgical training



**P1607869**

Cochlear Ear Model

# Hear now. And always

Cochlear is dedicated to helping people with moderate to profound hearing loss experience a world full of hearing. As the global leader in implantable hearing solutions, we have provided more than 750,000 devices and helped people of all ages to hear and connect with life's opportunities.

We aim to give people the best lifelong hearing experience and access to next generation technologies. We collaborate with leading clinical, research and support networks to advance hearing science and improve care.

That's why more people choose Cochlear than any other hearing implant company.



Click here to return  
to the contents page

This material is intended for health professionals. If you are a consumer, please seek advice from your health professional about treatments for hearing loss. Outcomes may vary, and your health professional will advise you about the factors which could affect your outcome. Always read the instructions for use. Not all products are available in all countries. Please contact your local Cochlear representative for product information.

The images in this publication are conceptual and used for illustrative purposes only.

Android, Google Play and the Google Play logo are trademarks of Google LLC.

Apple, the Apple logo, Apple Watch, FaceTime, Made for iPad logo, Made for iPhone logo, Made for iPod logo, iPhone, iPad Pro, iPad Air, iPad mini, iPad and iPod touch are trademarks of Apple Inc., registered in the U.S. and other countries. App Store is a service mark of Apple Inc., registered in the U.S. and other countries.

Dolby and the double-D symbol are registered trademarks of Dolby Laboratories Licensing Corporation.

©Cochlear Limited 2024. All rights reserved. ACE, Advance OffStylet, AOS, Ardium, AutoNRT, Autosensitivity, Baha, Baha SoftWear, BCDrive, Beam, Bring Back the Beat, Button, Carina, Cochlear, 科利耳, コクレア, 코클리어, Cochlear SoftWear, Contour, 콘트واء, Contour Advance, Custom Sound, DermaLock, Freedom, Hear now. And always, Hugfit, Human Design, Hybrid, Invisible Hearing, Kanso, LowPro, MET, MP3000, myCochlear, mySmartSound, NRT, Nucleus, Osia, Outcome Focused Fitting, Off-Stylet, Piezo Power, Profile, Slimline, SmartSound, Softip, SoundArc, SoundBand, True Wireless, the elliptical logo, Vistafix, Whisper, WindShield and Xidium are either trademarks or registered trademarks of the Cochlear group of companies.

## Cochlear Americas

10350 Park Meadows Drive, Lone Tree, CO 80124, USA

Tel: +1 303 790 9010 Support: Tel: +1 800 483 3123

## Cochlear Canada Inc.

2500-120 Adelaide Street West, Toronto, ON M5H 1T1, Canada

Tel: +1 800 483 3123 Fax: +1 416 972 5083

[www.cochlear.com](http://www.cochlear.com)



OSI025 ISS4 MAR24

Follow us on

