

86" Smart Interactive Display

MW3586-U-CE-KT Plus



Features

- 4K UHD anti-glare display delivers images with extreme detail.
- Ultra-narrow bezel design for perfect aesthetics.
- Dual Wi-Fi modules with both Wi-Fi and hotspot support for other mobile devices.
- High-precision infrared touch technology allows up to 50-point touch and 20-point write, realizing smooth co-authoring.
- Multiple utility buttons on the front panel such as power, volume control, settings, etc.
- A variety of quick tools such as annotation, screenshot, etc., with a floating window, improves usability and interaction efficiency.
- Wireless screen mirroring from various operating systems such as Android, iOS, and Windows to the display with one touch.
- Fast file transfer allows users to quickly transfer files to the display via a QR code.
- OTA remote upgrade allows the system to be upgraded online without backing up data.
- Optional 4K camera and microphone modules for immersive remote collaboration.
- A variety of front interfaces allow users to easily and quickly plug/unplug USB drives and other tools.
- OCR recognition. The whiteboard can automatically recognize text

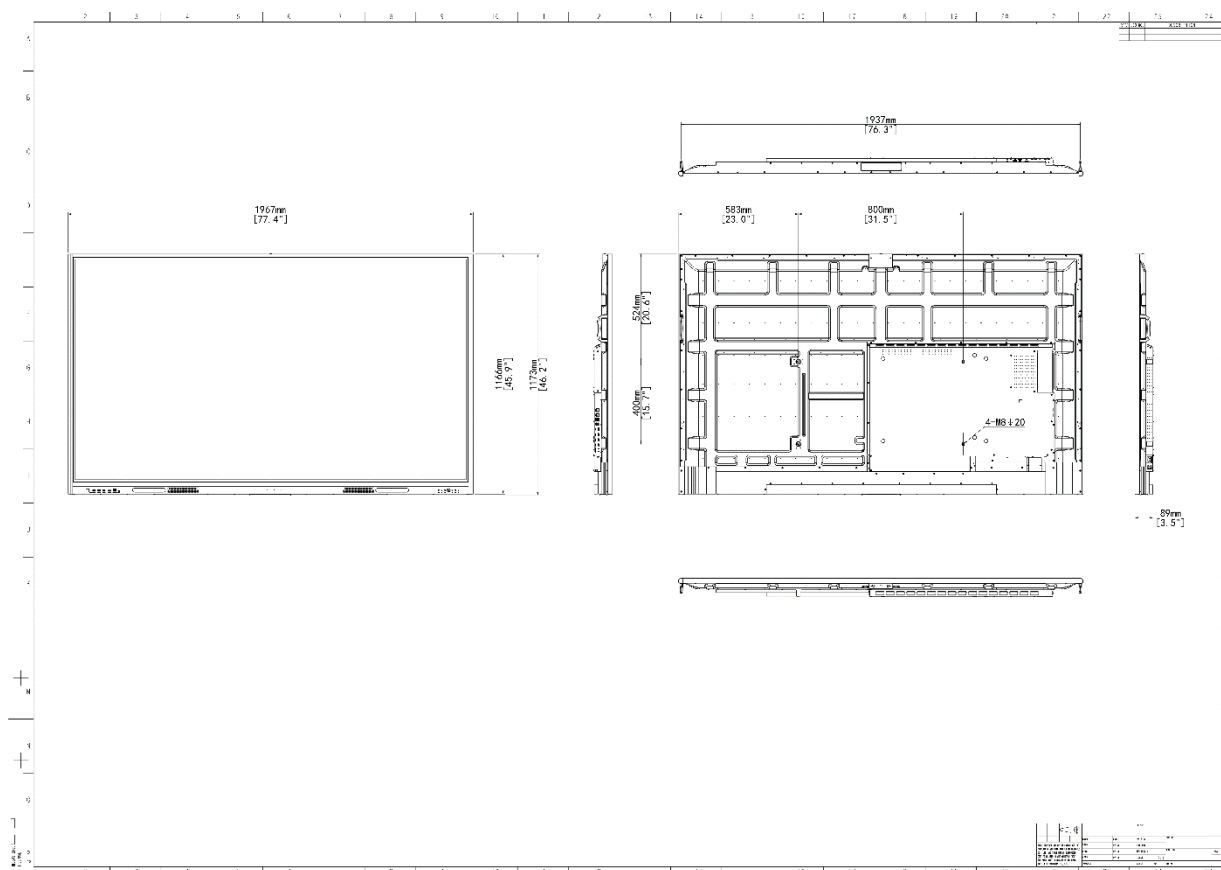
Specifications

Model	MW3586-U-CE
Panel	
Backlight	DLED
Panel Size	86"
Resolution	3840 × 2160
Brightness (cd/m ²)	500
Contrast Ratio	5000 : 1
Response Time (ms)	8
Color Support	1.07 billion

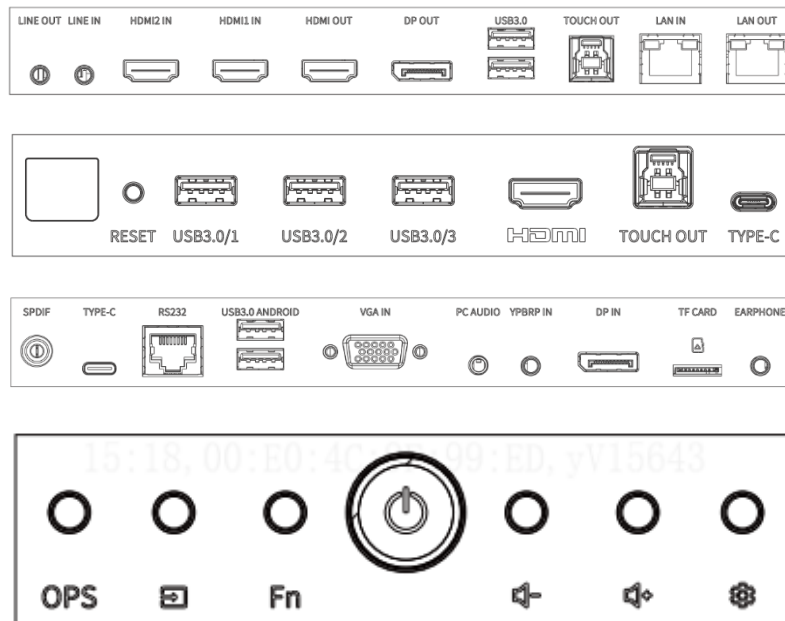
Viewing Angle (H/V)	178°/178°
Refresh rate (Hz)	60
Color Gamut	72%
Lifespan (h)	50000
Glass	4 mm tempered glass, level 7 on Mohs hardness scale, anti-glare
Surface Hardness	9H (7 on the Mohs scale)
Haze Value	25%
Display Size (mm)	1895.04 x 1065.96
Pixel Pitch (H x V) (mm)	0.4935 x 0.4935
Touch	
Touch Control	Up to 40-point multi-touch (WIN: 40-point, Android: 32-point)
Touch Precision (mm)	±1
Touch Response Time (ms)	≤2
Touch technology	Infrared touch
Touchscreen Input	Opaque objects (e.g. fingers, pens)
System	
CPU	4 x A76 (2.4 GHz) and 4 x A55 (1.8 GHz)
CPU Frequency	2.4GHz
RAM/ROM	8GB/128GB
Operation System	Android 13.0
Interface	
Video Input	3 x HDMI IN (4K), 1 x DP IN, 1 x VGA IN, 1 x YPbPr IN
Video Output	1 x DP OUT, 1 x HDMI OUT (4K)
Audio Input	1 x AUDIO IN
Audio Output	1 x EARPHONE, 1 x coaxial audio output interface (COAX)
Other Interfaces	1 x RS232, 3 x front USB 3.0, 4 x on-board USB 3.0, 2 x TOUCH USB, 2 x Type-C, 1 x TF CARD, 1 x IR IN
Network	1 x LAN OUT, 1 x LAN IN
Audio	
Speaker	2 x 15 W
Wi-Fi	
Wi-Fi Configuration	Wi-Fi 5+Wi-Fi 6, supports 5 GHz/2.4 GHz
Wi-Fi Performance	30m ² coverage, 20m transmission distance in open space
Bluetooth	
Bluetooth Version	5.2
Bluetooth Performance	10m transmission distance in open space
OSD	
Multi-Language	27 (Simplified Chinese, Traditional Chinese, English, Japanese, Arabic, French, Spanish(ES-ES), Spanish(ES-MX), Portuguese(Brazil), Portuguese, German, Italian, Dutch, Polish, Korean, Catalan, Galician, Vietnamese, Bulgarian, Kazakh, Russian, Ukrainian, Thai, Uzbek, Hungarian, Croatian, Romanian)
VESA	
Wall Mount Hole (mm)	800 x 400

Wall Mount Screw	4 x M8 screw hole
General	
Power Supply	AC 100 to 240 V, 50/60 Hz
Overall Power Consumption (W)	<360 (without OPS)
Standby Power Consumption (W)	< 0.5
Product Dimensions (W × H × D) (mm)	1967 x 1173 x 89
Package Dimensions (W × H × D) (mm)	2119 x 1339 x 259
Operating Temperature	0°C to 50°C
Weight (kg)	Net weight: 68 Gross weight: 82
Operating Humidity	10% to 90% RH (noncondensing)
Storage Temperature	-20°C to 60°C
Storage Humidity	0% to 95% RH (noncondensing)
Accessories Included	1 x power cable, 2 x stylus pen, 1 x quick guide, 1 x wall mounting bracket, 1 x IR remote control
Certification	
Certification	CE-EMC, CE-RED, CB/LVD, FCC, FCC-ID

Dimensions



Interface



Ordering Info

Product Model	Description
MW358 6-U-CE	86" Smart Interactive Display, Camera, projection device, OPS computer, floor stand, and smart pen need to be addition ally configured

Zhejiang Uniview Technologies Co., Ltd.

No. 369, Xietong Road, Xixing Sub-district, Binjiang District, Hangzhou City, 310051, Zhejiang Province, China

Email: overseasbusiness@uniview.com; globalsupport@uniview.com

<http://www.uniview.com>

©2023-2025 Zhejiang Uniview Technologies Co., Ltd. All rights reserved.

*Product specifications and availability are subject to change without notice.

*Despite our best efforts, technical or typographical errors may exist in this document. Uniview cannot be held responsible for any such errors and reserves the right to change the contents of this document without prior notice.