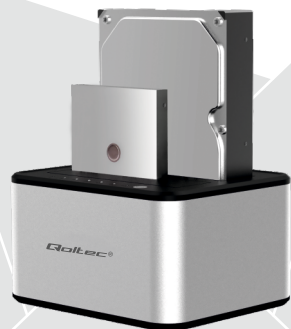




USER MANUAL

HDD DOCKING STATION

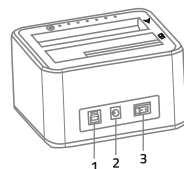


www.qoltec.com

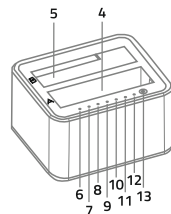
Model: 50316

PRODUCT DESCRIPTION

1. Allows you to connect 2.5" and 3.5" SSD/HDD to your computer via USB connection. Possibility of simultaneous connection of 2 hard drives.
2. Obsługa dysków SATA III
3. Offline disk cloning function, with a single button, without the need to connect the bay to the computer.
4. Plug and Play - docking station requires no installation.



1. USB 3.0 B connector
2. 12/3A DC port
3. Power switch
4. HDD A
5. HDD B
6. LED indicator for HDD A
7. LED indicator for HDD B



8. Power indicator
9. 25%
10. 50%
11. 75%
12. 100%
13. Offline clone switch

CONTENTS OF THE PACKAGE

1. Docking station.
2. Power supply.
3. USB 3.0 cable.
4. User manual.

OFFLINE CLONING FUNCTION

The station should not be connected to a computer. Insert into the bay the disk **A** from which the data on it will be cloned, and disk **B** on which the data from disk **A** will be saved. Disk **A** must not have a larger capacity than disk **B**. Connect the power and turn on the device holding the CLONE button pressed for 3 seconds. When the progress LED starts blinking, press the CLONE button again to start cloning. The progress of cloning can be observed on the LEDs. When all the lights are on, cloning is complete. You can then turn off the power and remove the disks.

NOTE: The data on disk **B** will be irretrievably deleted during cloning. If cloning is interrupted before the operation is complete, the entire process will have to be started all over again.

INSTRUCTIONS

1. Insert a 2.5" or 3.5" SATA drive into the docking station to connect the SATA hard drive to the SATA connector of the docking station, respectively.
2. Connect the docking cable to the computer port with the USB cable.
3. Connect the power supply to the socket and to the station.
4. The device will install automatically and be operational in seconds.

TROUBLESHOOTING

If the hard drive is new, start by reformatting it.

If the set does not function correctly, check that:

- The hard drive is connected to the connectors on the case.
- The USB cable is directly connected to one of the USB ports.

WARNING

1. Keep away from water, fire, liquids and out of reach of children.
2. Avoid prolonged exposure of the product to high

EN

or low temperatures.

3. To avoid danger, do not attempt to disassemble or repair the product on your own.

TECHNICAL SPECIFICATIONS

Transfer interface	USB 3.0
Transfer rate	Up to 5Gb/s
Support HDD	2.5" & 3.5"
Support SSD	2.5" & 3.5"
Dimensions	135 (L) x 114 (W) x 77 (H) mm
Case Material	Aluminum
Input Voltage	DC 12V / 3A
Internal Interface	SATA III
Supports	Windows XP/7/ 8/10/Linux Fedora FC8/ MAC OS 10.6.2

Producer:
NTEC sp. z o.o.
ul. Chorzowska 44B
44-100 Gliwice, Poland

www.b2b.ntec.eu
WEEE/BDO: 000137497
Made in China
Designed in Europe



www.qoltec.com

