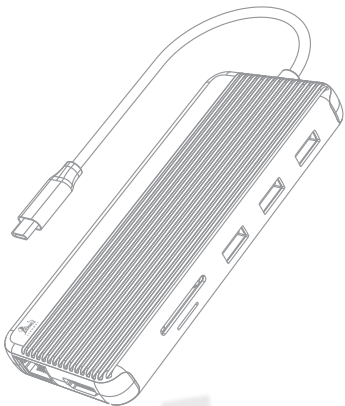


LIONWEI Dual DisplayPort USB C Laptop Docking Station

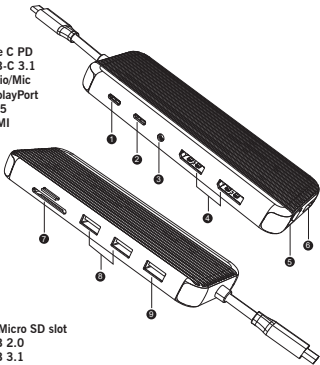


Product Manual

English

Product information

- 1: Type C PD
- 2: USB-C 3.1
- 3: Audio/Mic
- 4: DisplayPort
- 5: RJ45
- 6: HDMI



- 7: SD/Micro SD slot
- 8: USB 2.0
- 9: USB 3.1

Product Specification

- 1.USB C PD port: support PD v3.0,100W input max.
- 2.HDMI and DisplayPort: Supports up to 8K@30Hz or 4K@120Hz with DSC,Supports up to 4K@60Hz without DSC,Support High Dynamic Range (HDR) transport.
- 3.RJ45: Integrated 10/100/1000M network interface.
- 4.SD/Micro SD: Support Secure Digital v4.0 UHS-II,read: 250MB/s,write: 250MB/s, Support Secure Digital v1.0/ v1.1/ v2.0/ SDHC/ SDXC
- 5.USB2.0: 480Mbps,for keyboard,mouse,GamePad.etc.
- 6.USB3.1: Up to 10Gbps,Backward compatible with USB3.0,USB2.0,USB1.1.

HDMI and DisplayPort performance

- 1.Please confirm the dp alt mode version of your laptop's USB-C port using.
- 2.MacOS can only external one monitor, and the second/third external monitor just mirrors the first one.
- 3.Windows without this limitation.

Product information

<In DP1.4>

	HDMI	HDMI	DP
Single display	8k@30Hz or 4K@120Hz		
		8k@30Hz or 4K@120Hz	
Dual display			8k@30Hz or 4K@120Hz
	4K@60Hz	4K@60Hz	
Triple display	4K@60Hz	4K@60Hz	4K@60Hz
	4K@60Hz	4K@30Hz	4K@30Hz

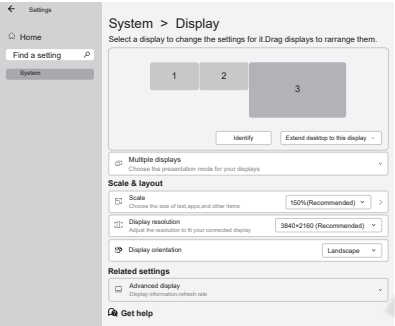
<In DP1.2>

	HDMI	HDMI	DP
Single display	4K@30Hz		
		4K@30Hz	
Dual display			4K@30Hz
	2K@30Hz	1080P@60Hz	
Triple display		2K@30Hz	1080P@60Hz
	1080P@60Hz		2K@30Hz
Only can light up two displays			

How to set up the extend display?

A: Windows

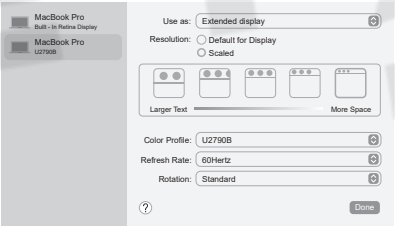
Windows11: Start>Setting>System>Display



In there, you can set the Display mode, Rearrange the position of the screen, Change Resolution, Color Profile, Orientation and Refresh Rate in Advanced display.

B: Mac OS

Monterey: System Preferences > Displays > Display Settings.



Then you can change the display mode in "Use as" menu and set up these setting like: Resolution/ ColorProfile / Refresh Rate and Rotation

FAQ

Q1:When connecting a wireless mouse or keyboard, it may not work properly?

Most wireless device like mouse, keyboard, and Bluetooth device work in the 2.4Ghz wireless band. USB 3.0 Port has potential for interference that can affect the device's performance. The most effective method is to add a USB 2.0 extension cable between the HUB and the receiver.

Q2:The display won't work, the resolution or refresh rate is abnormal.

1. Confirm that the USB-C port in your laptop supports dp alt mode.This information you can find out in your laptop's specification or consult your laptop's official customer service.
2. There are some software conflicts,usually the driver problem of the GPU.Upgrade or roll back the driver of GPU version may solve it.

Q3:The device I connect didn't work , Or the laptop suddenly shuts down.

The connected devices consume too much power, please connect the PD charger.

The tips can't solve my problem, or I have more questions.

If you encounter any problem during using our product,please contact us through amazon's after-sale service or our e-mail: supportus@lionweitech.com, we will help you solve any problem.

