



Freestyle Smart Portable Projector

KAPFSPB100A

Safety & Warnings	3
Components	5
Overview	6
Operation	8
Notes	18

Safety & Warnings

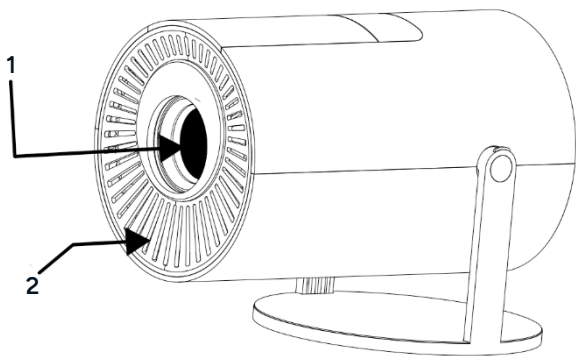
- Read all instructions carefully before use and retain this user guide for future reference.
- This projector is neither dustproof nor waterproof.
- To reduce the risk of fire or electric shock, do not expose the projector to rain or moisture.
- Always use the provided power cord. Operate the projector only with the specified rated power supply.
- Do not look directly into the lens while the projector is operating. The intense light can cause eye discomfort or temporary visual disturbance.
- Children should use the projector only under adult supervision.
- Do not cover the projector's vents. Overheating may shorten the projector's lifespan and pose a safety hazard.
- Regularly clean the vents. Dust buildup can impair cooling performance.
- Do not operate the projector in greasy, damp, dusty, or smoky environments. Exposure to oil or chemicals can cause malfunction.
- Handle the projector with care during daily use.
- Disconnect power if the projector will not be used for an extended period.
- Do not attempt to disassemble the projector yourself. If the projector is damaged, cease use immediately and contact **help.Kogan.com** for support.
- This device is not intended for use by persons (including children) with reduced physical, sensory, or mental capabilities, or lack of experience and knowledge, unless supervised or instructed by a responsible person.
- For indoor, household use only. Not intended for commercial or industrial environments.
- Do not use in wet or humid locations such as bathrooms, steamy kitchens, or near swimming pools.
- Avoid use in areas where condensation may occur.
- Do not place the projector on surfaces subject to vibrations or shocks.
- Ensure the projector is not exposed to dripping or splashing. Do not place containers with liquids, such as vases, on or near the unit.
- Avoid direct sunlight, high heat, excessive dust, and vibrations.

- Do not use a damaged power cord, plug, or a loose outlet. These may cause fire or electric shock. If the power cord is damaged, cease use immediately and contact **help.Kogan.com** for support.
- Follow all operational and maintenance guidelines to ensure safe use and prolong the life of the projector.
- Keep the projector away from flammable materials, explosive environments, strong electromagnetic interference (e.g., near radar stations or substations), and intense ambient light (e.g., direct sunlight).
- Ensure proper ventilation. Do not obstruct the vents.
- Do not bend, drag, or place heavy objects on the power cord.
- Do not cover the power cord with soft materials or expose it to heat.
- Avoid touching the power cord with wet hands.

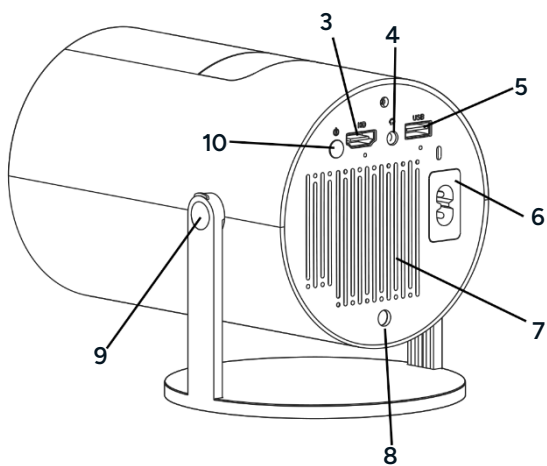
Components

- Projector
- Power Cord
- Remote Control

Overview



- 1 Lens
- 2 Air Inlet



- 3 HDMI 1.4 Port
- 4 Earphone Port
- 5 USB Port
- 6 Power Port
- 7 Vent
- 8 DC Port
- 9 Rotator
- 10 Power Button and Indicator

Remote Control



- | | | | |
|----|-----------------|----|---------------------|
| 1 | Power | 11 | Return |
| 2 | USB Source | 12 | Settings |
| 3 | Projection Mode | 13 | Home |
| 4 | Signal Source | 14 | Volume +/- |
| 5 | Backspace | 15 | Focus +/- |
| 6 | Up | 16 | Mute Switch |
| 7 | Left | 17 | Netflix Hotkey |
| 8 | Right | 18 | YouTube Hotkey |
| 9 | Down | 19 | Prime Video Hotkey |
| 10 | Ok | 20 | Open Browser Hotkey |

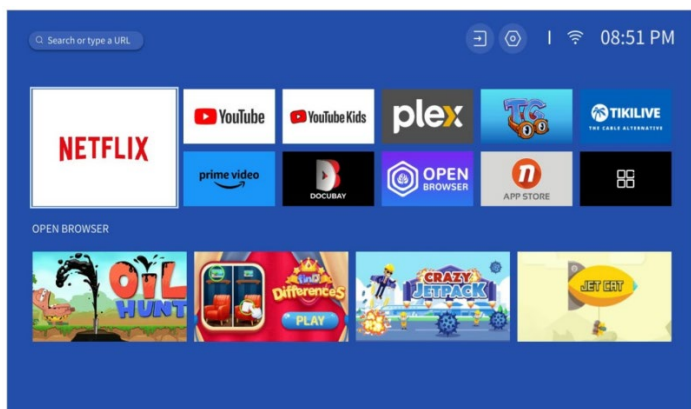
Operation

Note:

Images are for illustration purposes only. The actual screen may differ.

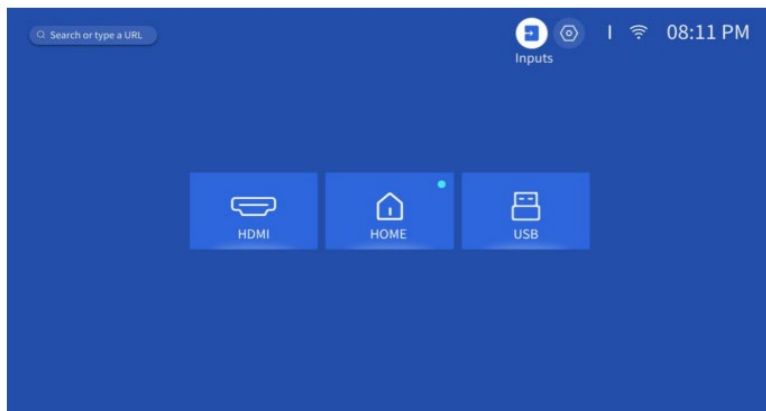
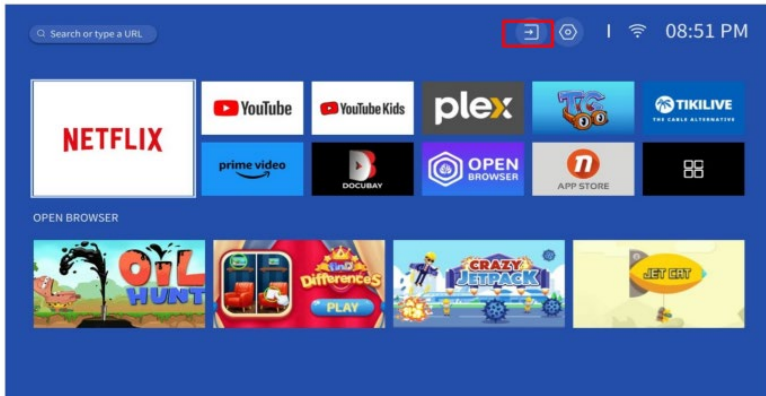
Power On

1. Connect one end of the provided power cord to the power port on the projector and the other end to an electrical outlet. The 'Power' indicator will illuminate.
2. Press the 'Power' button on the projector or the Remote Control to turn on the device.
3. Follow the startup guide to complete the initial setup, including connecting to a network and setting up apps like Netflix.



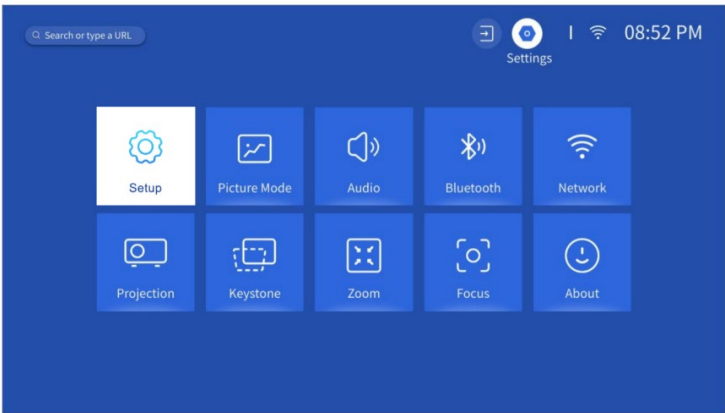
USB and HDMI Connection

1. Insert the USB drive or connect an HDMI cable to the projector.
2. Press the 'Input Source' button on the Remote Control or select it on the home page.
3. Choose the USB or HDMI icon and press the 'OK' button to enter the corresponding channel.



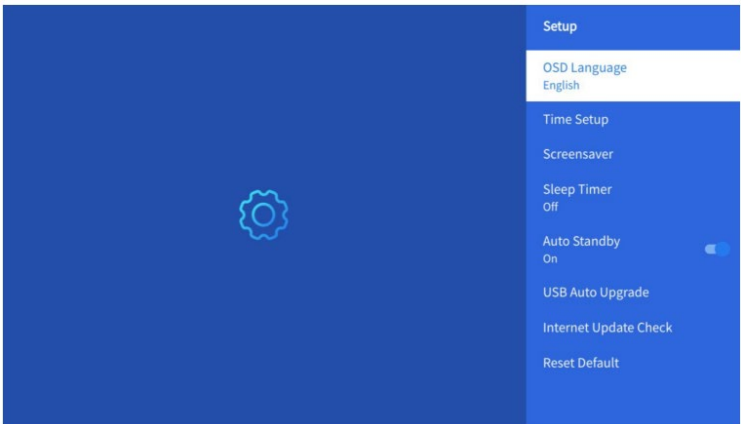
Settings

Select 'Settings' on the projector's home screen.



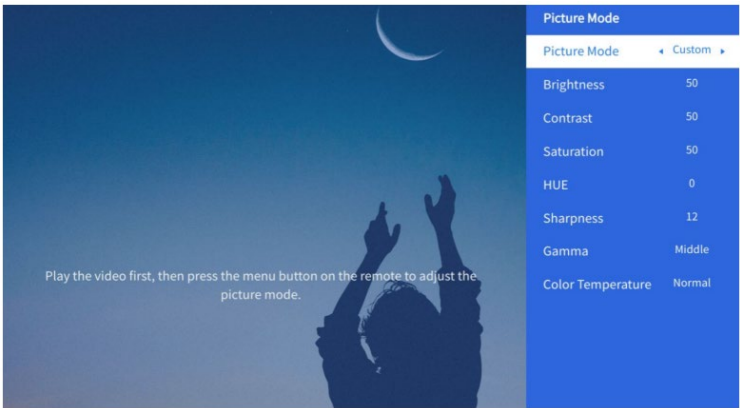
Setup

Go to 'Settings' > 'Setup' to configure language, reset options, and other preferences.



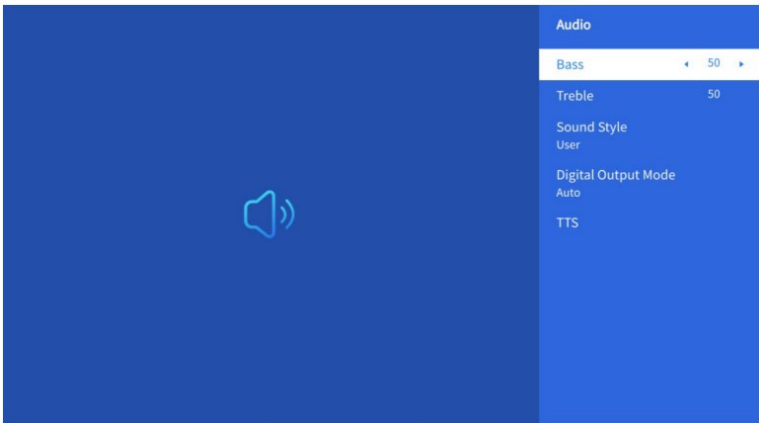
Picture Mode

- Navigate to 'Settings' > 'Picture Mode' to adjust picture settings.
- If Custom Mode is selected, additional adjustments can be made.



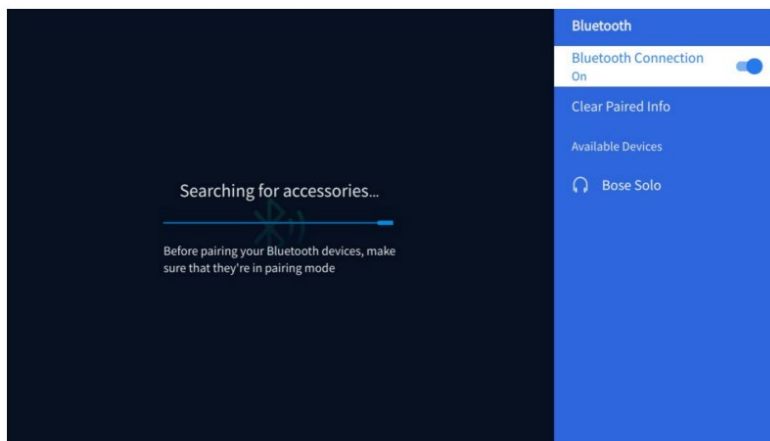
Audio Settings

Navigate to 'Settings' > 'Audio' to adjust audio preferences.



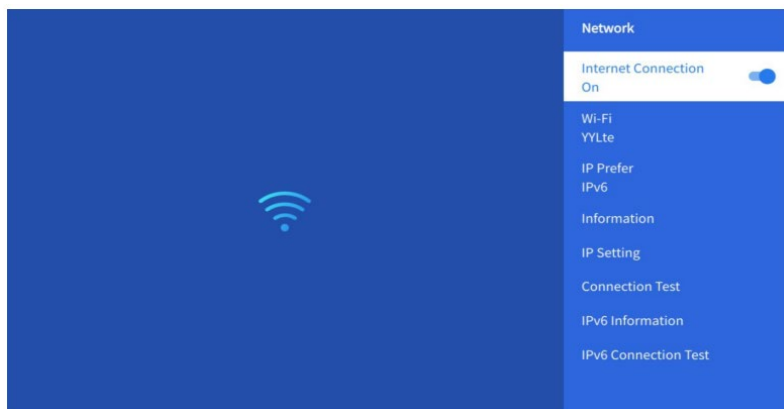
Bluetooth Settings

1. Go to 'Settings' > 'Bluetooth'.
2. Turn Bluetooth on, select 'Search for Devices', then choose your Bluetooth speaker or headphones to pair.



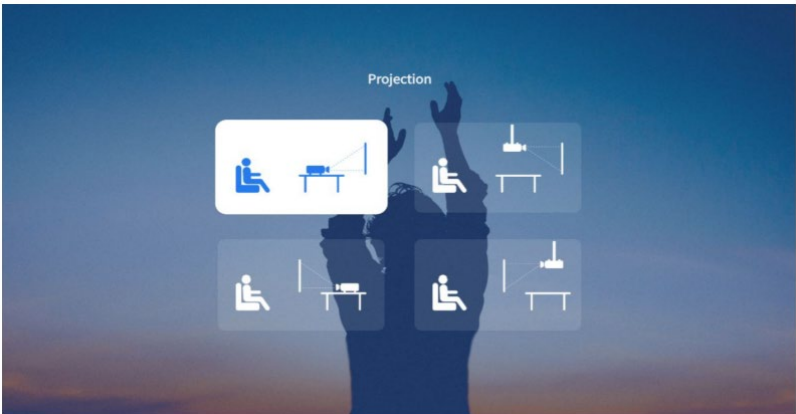
Network Settings

1. Navigate to 'Settings' > 'Network' > 'Wi-Fi'.
2. Turn Wi-Fi on, select your network, and enter the password to connect to the internet.



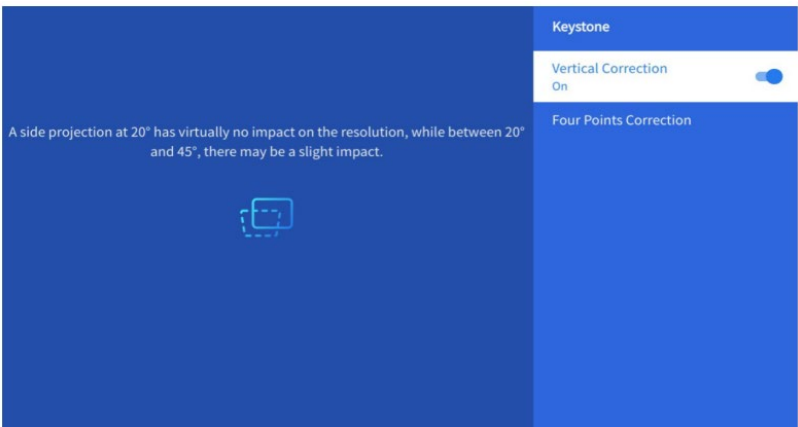
Projection Settings

Go to 'Settings' > 'Projection' to adjust the projection mode as needed.



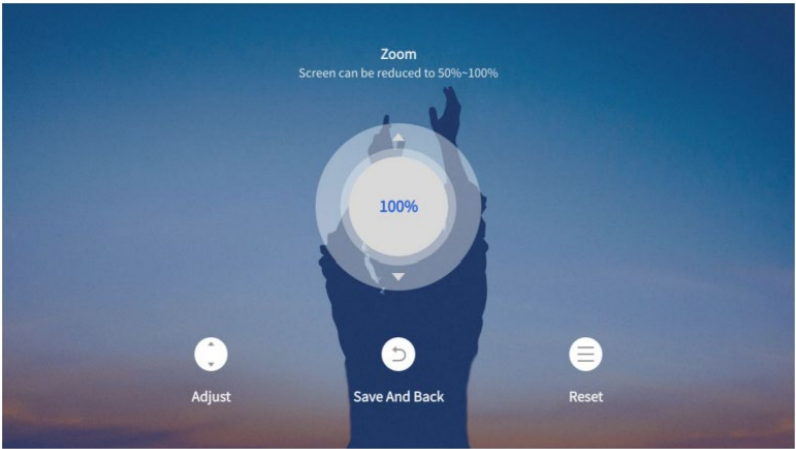
Keystone Correction

Go to 'Settings' > 'Keystone' to adjust keystone correction.



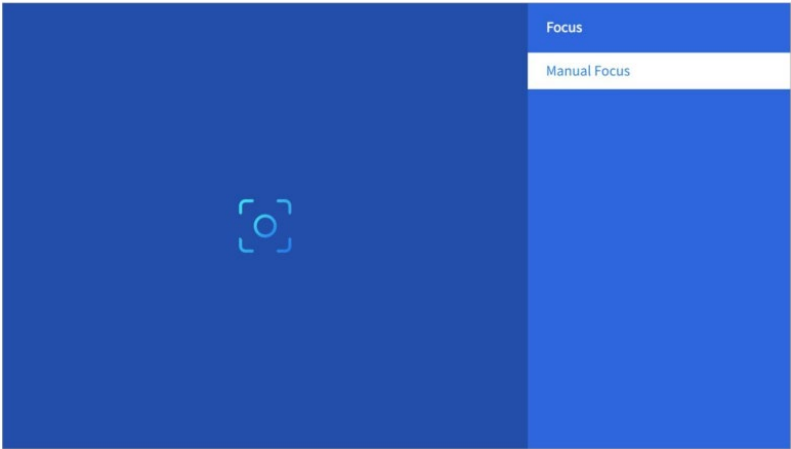
Zoom Settings

Go to 'Settings' > 'Zoom' to adjust the zoom level.



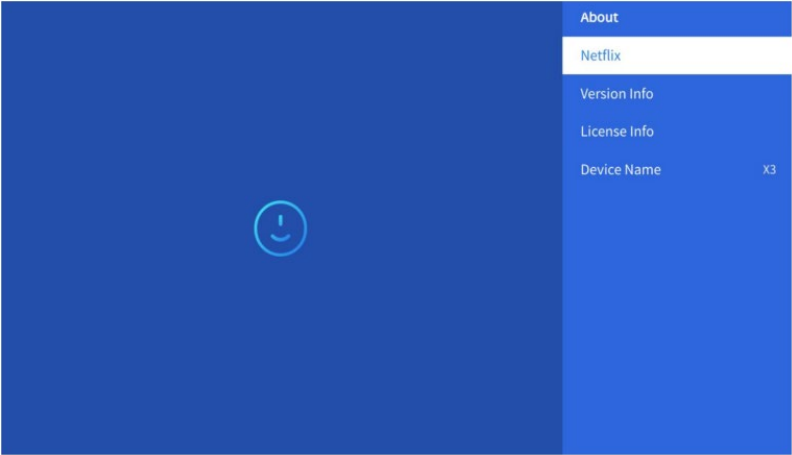
Focus Settings

Navigate to 'Settings' > 'Focus' to adjust the image focus.



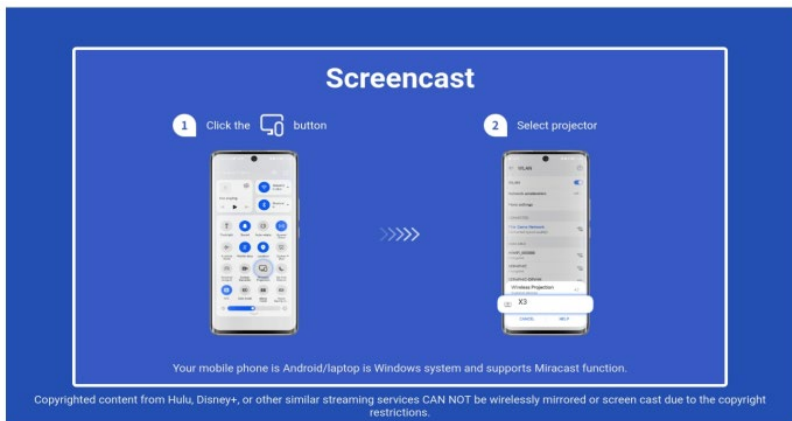
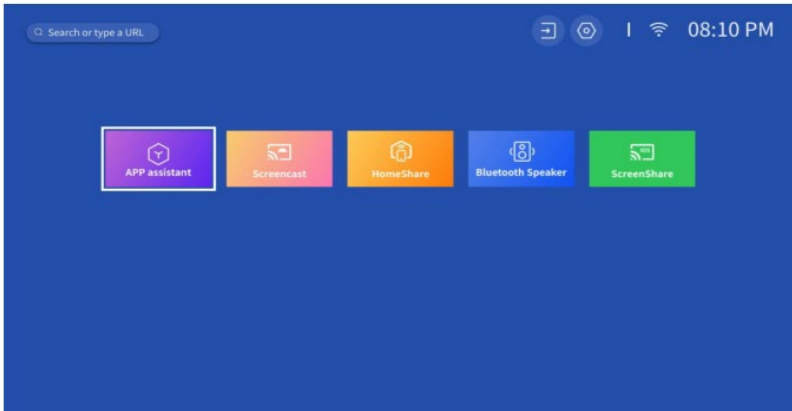
About

Go to 'Settings' > 'About' to view system information.



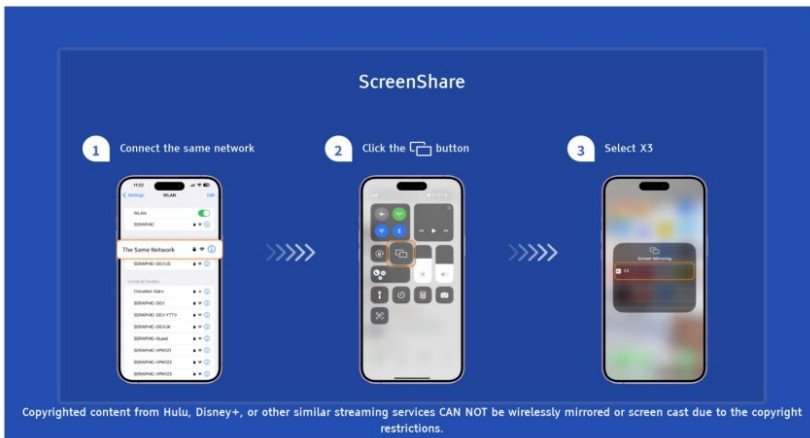
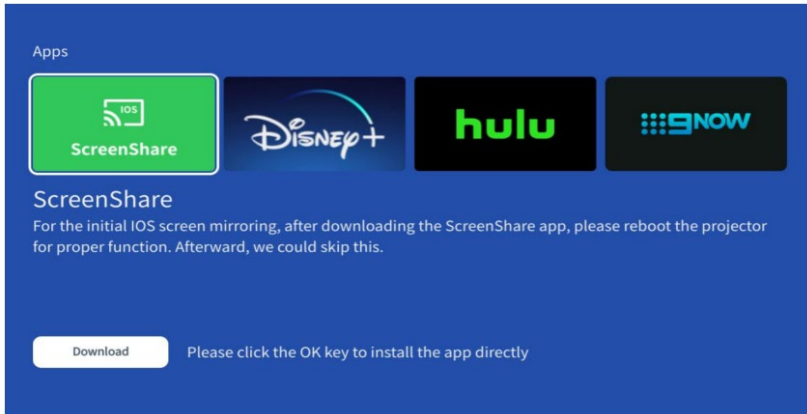
Screen Cast (Android Devices)

1. Ensure the Android device and projector are connected to the same Wi-Fi network.
2. Follow these steps on the Android device: 'Home Page' → 'Screencast' → 'Enable Miracast Service' → 'Enable phone mirroring' → 'Connect'.



Screen Share (Apple Devices)

1. Ensure the Apple device and projector are connected to the same Wi-Fi network.
2. Follow these steps on the Apple device: 'Home Page' → 'APP Assistant' → 'Download Screen Share' → 'Enable phone mirroring' → 'Connect'.



[illegible]

[illegible]

Need more information?

We hope that this user guide has given you the assistance needed for a simple set-up.

For the most up-to-date guide for your product, as well as any additional assistance you may require, head online to **help.Kogan.com**.

