

- ⑤ Perform step 4 for all additional remotes.
- ⑥ After all remotes have been programmed, turn the key to the OFF position, remove the programmer and test each remote. If remote programming was unsuccessful, repeat the process from step 1.

Note: Some vehicles may need to have the engine started and stopped, and the driver's door opened and closed before the remotes will work.

FREQUENTLY ASKED QUESTIONS

Q: Can I use the same PROGRAMMER on other vehicles?

A: No, the programmer will be locked to the first vehicle that uses it. You may add more keys to the same vehicle again as needed, but it will not work on different vehicles.

Q: Where is the location of OBD port

A: This port located under steering column, near the brake pedals. It may be covered by a faceplate that will easily pop off.

Thank you for purchasing the ANGEWOZ key fob and programmer. Our tools are manufactured to high standards, following these instructions will provide trouble-free performance.

For help or assistance, please contact technical support at:

Tel: (+86)17727801121
E-Mail: angewoz_service@163.com

V1.0100



USER GUIDE

Pairing Instructions for Chevrolet, Buick, GMC, Cadillac,
Pontiac, Saturn, Suzuki Replacement Remotes.

IMPORTANT NOTES

Before operating this equipment, please read these instructions carefully, paying particular attention to safety warnings and cautions. Failure to use this product correctly may result in damage and make the remote control unsuitable for the vehicle.

1. **All currently programmed and new remotes** must be reprogrammed to your vehicle. Please have all remotes in hand at time of programming.

2. You must have at least one of original keys or fobs for programming process.

3. Only the original functions of the remote control can be used on the new key, regardless of the buttons on the new key. This key doesn't add remote features that your vehicle did not have before.

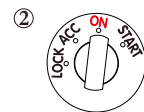
4. The vehicle allows add up to **4 total remotes**.

5. Do not use the programmer while the vehicle is in motion. Unplug it from the OBD port before driving the vehicle. An alarm will sound reminding you to remove it after 5 minutes.

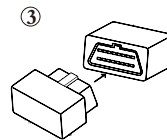
PROGRAMMING INSTRUCTIONS

Instructions have timing requirements. If you wait too long between steps, your vehicle's computer may time out, requiring you to start over. Once plugging the programmer in, you will have **2 MINUTES** to program all new and existing remotes to the vehicle. After 2 minutes your session will time out and your vehicle will no longer be in programming mode.

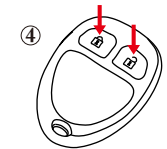
① Enter the vehicle and close all doors.



Insert the key into ignition and turn to **ON** position. **DO NOT** start the engine.



Insert the programmer into your vehicle's on-board diagnostic(OBD) port. The programmer will beep **3 times** rapidly when it powers up and starts the process.



PRESS and **HOLD** both **LOCK** and **UNLOCK** button simultaneously on the remote until you hear a beep from the vehicle or the door locks cycle

(approximately 15~30 seconds).

Note: Your vehicle may or may not provide feedback such as the door lock cycling, a message on the dashboard, or a chime.