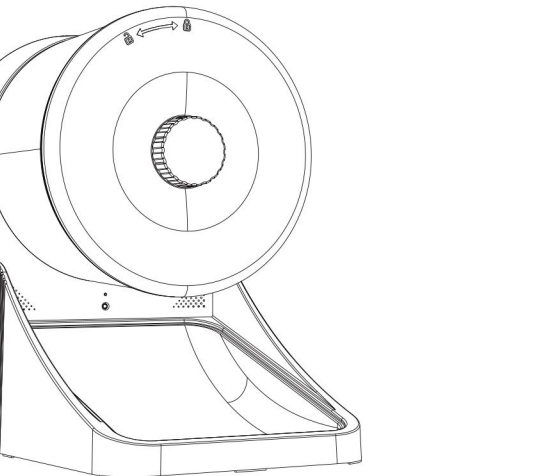


Wheel Pet Feeder AF050 WIFI Version

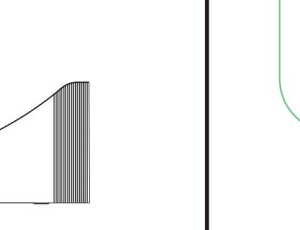


After-sales Service: Should any questions, please contact the 24-hour online customer service team directly.

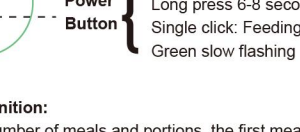
Product Information

Product Model:	AF050
Product Material:	ABS
Capacity:	2.6L/0.69GAL (fit for dry food only)
Feeding Amount:	1-10 portions
Maximum meal output:	4 meals/day
Notice:	Please use 3 D-size batteries

Packing List



Pet Feeder Machine x1



Feeding Bowl x1

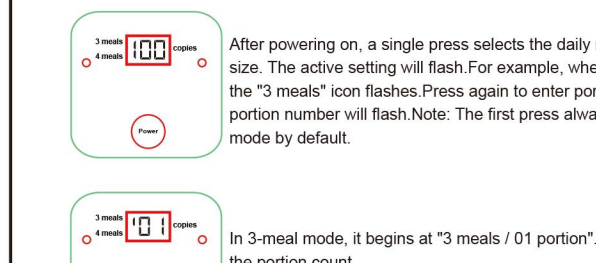


USB cable x1



AC power adapter x1

Control Panel



3 Meals Per Day Definition:
After confirming the number of meals and portions, the first meal is dispensed, and the timer starts. The three meals are evenly distributed over 24 hours, with one meal dispensed every 8 hours.

4 Meals Per Day Definition:
After confirming the number of meals and portions, the first meal is dispensed, and the timer starts. The four meals are evenly distributed over 24 hours, with one meal dispensed every 6 hours.

Long-press Operation

Power On/Off:
Press and hold for about 2 seconds to turn the device on/off. When powered on, the screen will light up and the device enters operational mode.

Factory Reset:
During operation: Press and hold for 6-8 seconds. The device will power off and restart automatically. Upon successful reset, the indicator light will pulse slowly (breathing effect). All meal schedules will be cleared and paired mobile devices will be unlinked.

When powered off: Press and hold for 8 seconds. The device will power on and perform reset. Successful reset is indicated by a slow-pulsing (breathing) light.

Set meal delivery mode by pressing

After powering on, a single press selects the daily meal count and portion size. The active setting will flash. For example, when setting "3 meals/day", the "3 meals" icon flashes. Press again to enter portion size setting—the portion number will flash. Note: The first press always starts in "3 meals/day" mode by default.

In 3-meal mode, it begins at "3 meals / 01 portion". Each press increases the portion count.
※ Auto-confirm: If no action for 10 seconds, the display stops flashing to confirm.

Maximum: 10 portions per meal. After reaching "3 meals/10 portions", the next press switches to 4-meal mode.

In 4-meal mode, it resets to "4 meals / 01 portion". Each press increases the count.
※ Auto-confirm: Same 10-second rule applies.

Maximum setting: **【10】** portions. After reaching "4 meals/10 portions", the next press cycles back to "3 meals / 01 portion". This pattern repeats indefinitely. (Memory function: Settings persist after power-off/on.) Once target meal count and portions are set, inaction for 10 seconds stops flashing to confirm.
After confirmation, the device dispenses the first meal and starts the timer.

Installation Steps

- Put in dry batteries
- Install the power cable. It is recommended to keep the device connected to the power supply continuously.
- Take out the bowl
- Dump the feeder, twist open the lid
- Pour in pet dry food
- Be careful not cover this area with food to avoid affecting the installation

Detachment Steps

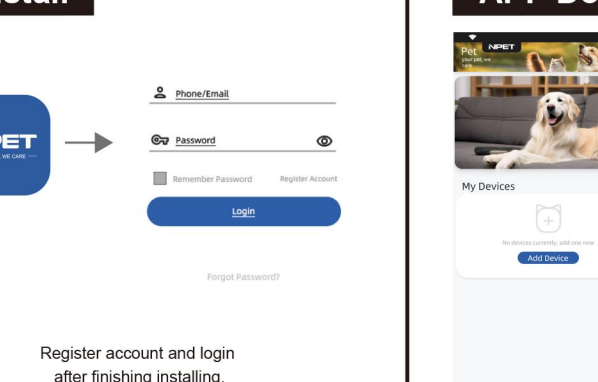
- Take out the bowl
- Remove the food bucket
- Twist open the lid, take out the food pipe
- All washable parts, the machine body cannot be cleaned

- Install the lid
- Keep the food outlet facing upwards to avoid the leakage
- According to the arrow indication to install the lid
- Install the bowl

Installation Steps

- Install the food pipe
- Notice the direction between the food pipe and the middle cylinder
- According to the arrow indication to install the lid
- Install the food bucket and bowl

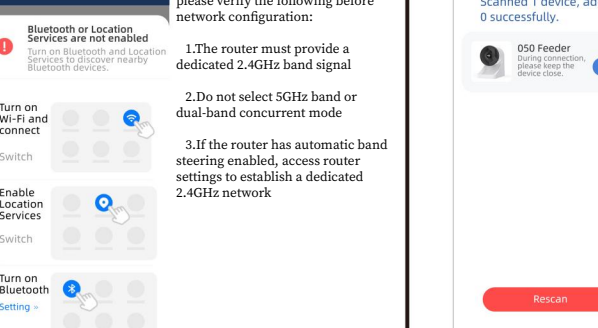
APP Download & Install



Scan QR code to download and install it.

Register account and login after finishing installing.

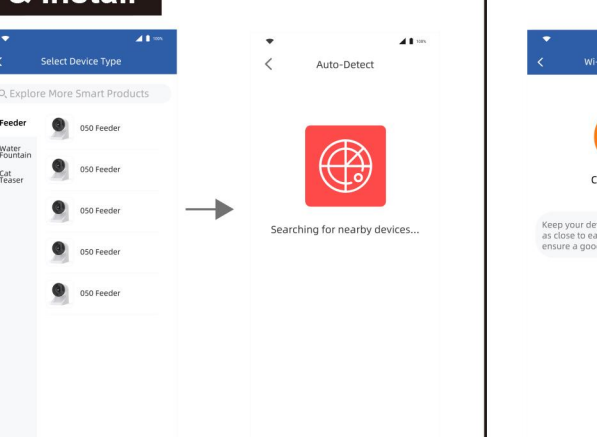
Connection Preparation



Bluetooth or Location Services are not enabled. Please verify the following before network configuration:

- The router must provide a dedicated 2.4GHz band signal
- Do not select 5GHz band or dual-band concurrent mode
- If the router has automatic band steering enabled, access router settings to establish a dedicated 2.4GHz network

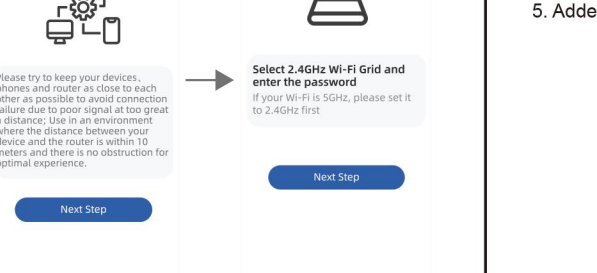
APP Download & Install



Scan QR code to download and install it.

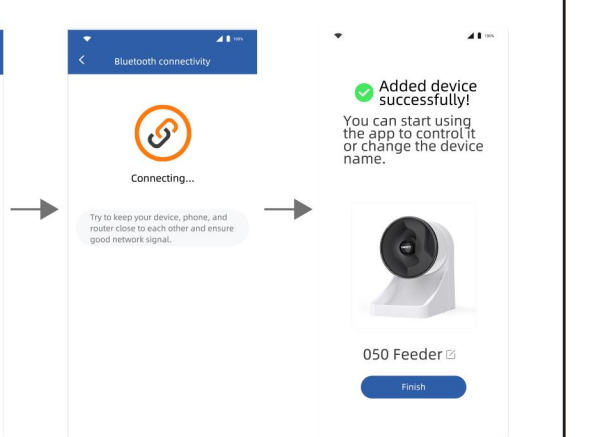
Register account and login after finishing installing.

Connection Preparation



- The router must provide a dedicated 2.4GHz band signal
- Do not select 5GHz band or dual-band concurrent mode
- If the router has automatic band steering enabled, access router settings to establish a dedicated 2.4GHz network

Feeding Setting Steps



Scan QR code to download and install it.

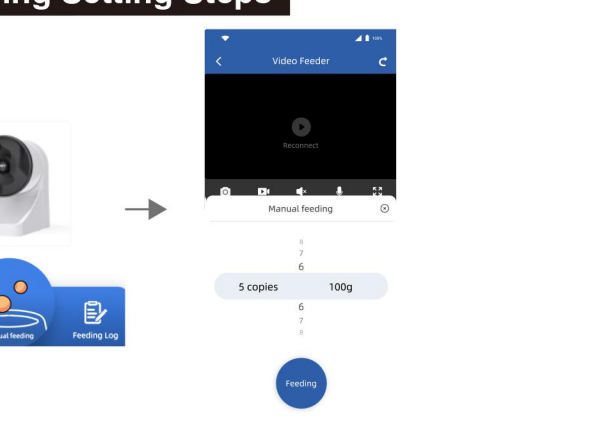
Register account and login after finishing installing.

Connection Preparation



- The router must provide a dedicated 2.4GHz band signal
- Do not select 5GHz band or dual-band concurrent mode
- If the router has automatic band steering enabled, access router settings to establish a dedicated 2.4GHz network

Feeding Setting Steps



Scan QR code to download and install it.

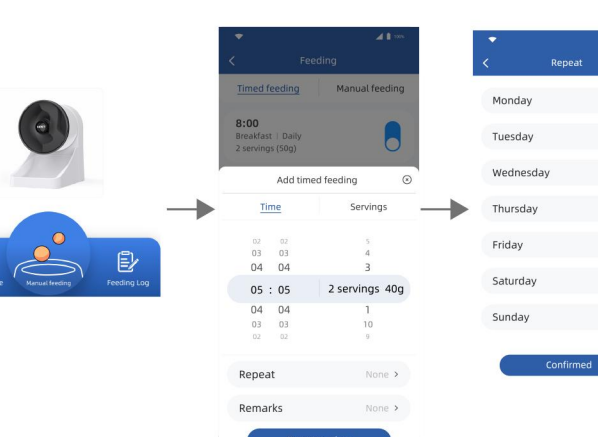
Register account and login after finishing installing.

Connection Preparation



- The router must provide a dedicated 2.4GHz band signal
- Do not select 5GHz band or dual-band concurrent mode
- If the router has automatic band steering enabled, access router settings to establish a dedicated 2.4GHz network

Feeding Setting Steps



Scan QR code to download and install it.

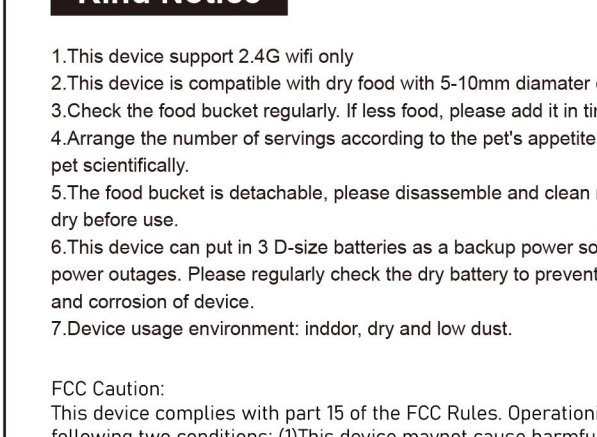
Register account and login after finishing installing.

Connection Preparation



- The router must provide a dedicated 2.4GHz band signal
- Do not select 5GHz band or dual-band concurrent mode
- If the router has automatic band steering enabled, access router settings to establish a dedicated 2.4GHz network

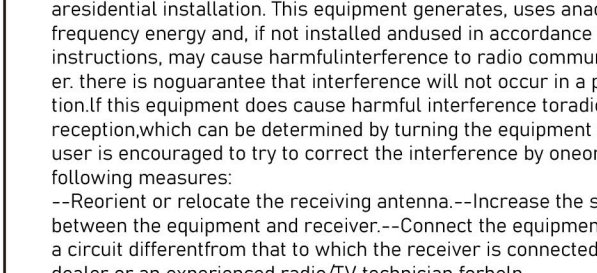
Feeding Setting Steps



Scan QR code to download and install it.

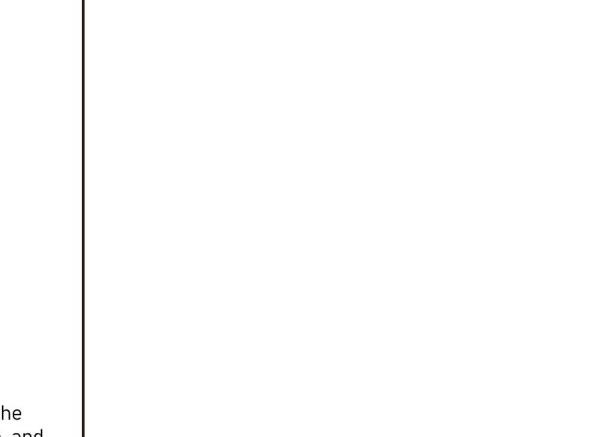
Register account and login after finishing installing.

Connection Preparation



- The router must provide a dedicated 2.4GHz band signal
- Do not select 5GHz band or dual-band concurrent mode
- If the router has automatic band steering enabled, access router settings to establish a dedicated 2.4GHz network

Feeding Setting Steps



Scan QR code to download and install it.

Register account and login after finishing installing.

Connection Preparation



- The router must provide a dedicated 2.4GHz band signal
- Do not select 5GHz band or dual-band concurrent mode
- If the router has automatic band steering enabled, access router settings to establish a dedicated 2.4GHz network

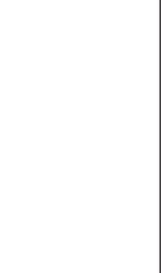
Feeding Setting Steps



Scan QR code to download and install it.

Register account and login after finishing installing.

Connection Preparation



- The router must provide a dedicated 2.4GHz band signal
- Do not select 5GHz band or dual-band concurrent mode
- If the router has automatic band steering enabled, access router settings to establish a dedicated 2.4GHz network

Kind Notice

- This device support 2.4G wifi only
- This device is compatible with dry food with 5-10mm diameter only
- Check the food bucket regularly. If less food, please add it in time.
- Arrange the number of servings according to the pet's appetite and feed the pet scientifically.
- The food bucket is detachable, please disassemble and clean regularly, air dry before use.
- This device can put in 3 D-size batteries as a backup power source during power outages. Please regularly check the dry battery to prevent leakage and corrosion of device.
- Device usage environment: indoor, dry and low dust.

FCC Caution:
This device complies with part 15 of the FCC Rules. Operation is subject to the following two conditions: (1) This device may not cause harmful interference, and (2) this device must accept any interference received, including interference that may cause undesired operation. Any changes or modifications not expressly approved by the party responsible for compliance could void the user's authority to operate the equipment.

NOTE: This equipment has been tested and found to comply with the limits for a Class B digital device, pursuant to Part 15 of the FCC Rules. These limits are designed to provide reasonable protection against harmful interference in residential installation. This equipment generates, uses, and can radiate radio frequency energy and, if not installed and used in accordance with the instructions, may cause harmful interference to radio communications. However, there is no guarantee that interference will not occur in a particular installation. If this equipment does cause harmful interference to radio or television reception, which can be determined by turning the equipment off and on, the user is encouraged to try to correct the interference by one or more of the following measures:
--Reorient or relocate the receiving antenna.
--Increase the separation between the equipment and receiver.
--Connect the equipment into an outlet on a circuit different from that to which the receiver is connected.
--Consult the dealer or an experienced radio/TV technician for help.
The device has been evaluated to meet general RF exposure requirement. The device can be used in portable exposure condition without restriction.

MADE IN CHINA