

## Device Parameter

Working Voltage: DC 12V  
Working Current: Non-loaded <200mA  
Working Temperature: -20°C - 50°C (-4°F - 122°F)  
Working Humidity: 10% - 90%  
Power Consumption: <3W  
Size: 342x241x83mm (13.46x9.49x3.27in.)  
Communication Mode: TCP/IP  
Communication Rate: 10/100M (TCP/IP)  
Extension Communication: RS485  
Users Capacity: 20000  
Users Capacity: 70000 Records  
Max. Doors: 4  
Dry Contact Input: 5  
Dry Contact Output: 12  
Access Group: 200 Groups  
Default IP Address: 192.168.0.245  
Default Communication Password: NULL

## Basic Function

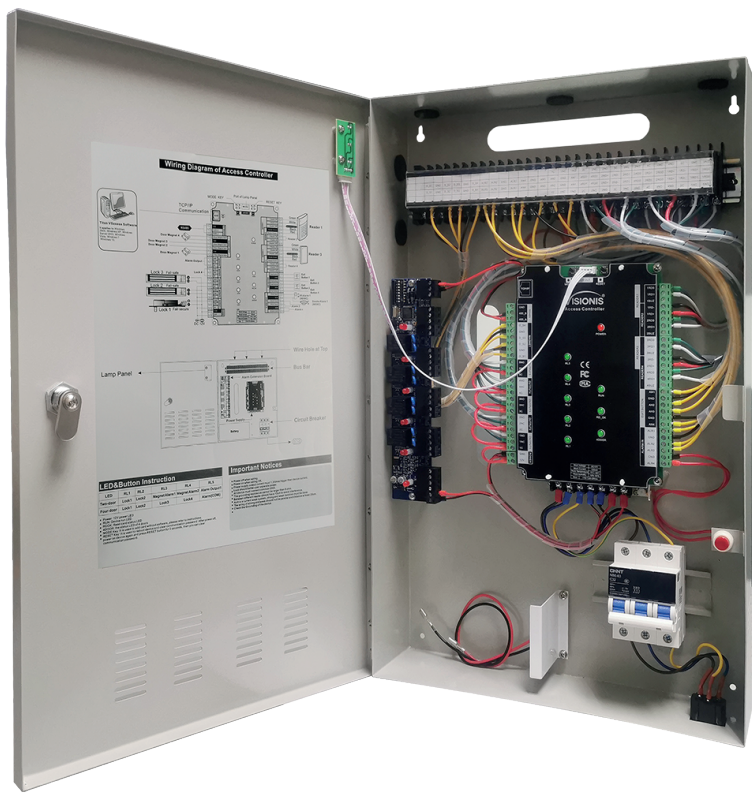
- First card open
- Multi-card open
- Anti-passback
- Multi-door interlock
- Card, password, card+password, card or password open mode
- Different time different open mode
- Transmission encryption setup
- Self-checking function
- Remote control
- Wiegand format can be self-defined
- Add card without software
- Multi-channel connection (max. 3 channels)
- Real-time events active or passive upload
- Arm/disarm by card
- Arm/disarm by software
- Relieve alarm by software
- Multi-event linkage alarm
- One event related to multi-relay trigger
- Alarm delay turn off
- Capacity can be expanded

**IMPORTANT:** These access control panels (Version 2.0) are only compatible with access control panels (Version 2.0) and with the Titan VSAccess software. They are not compatible with access control panels (Version 1.0) nor with VSAccess software.

- Self-defined door lock relay
- Self-defined control door quantity
- Door latch mode
- Active door normal open mode by card
- Timed automatic normal open mode
- Timed invalid for exit button
- Normal open time
- Normal open holiday forbidden schedule
- Access time schedule
- Forbid access holiday schedule
- Door lock delay setup
- Access group setup
- Threaten code setup
- Force open/close door
- Open door by software
- Relieve normal open by card
- Relieve card and card valid date setup
- Expand RS485 communication
- Real-time monitoring door and relay state

**VISIONIS**  
Technology Within Your Reach

# Commercial Access Control VS-AXESS-4ETL



## User Guide



www.visionistech.com

## Wiring Introduction

Wiring Position	Wire Model	Remark
Power Supply - Access Controller	RVV2*1.0	Distance < 100M
Access Controller - Reader	RVV4*0.5	Distance 60M, max. can not over 100M.
Access Controller - Electric Lock	RVV4*1.0 (Door-magnet feedback)	Distance < 150M
Access Controller - Exit Button	RVV2*0.5	Distance < 200M
Access Controller - IR Alarm	RVV2*1.0	Distance < 200M
Access Controller - Sound-light Alarm	RVV2*1.0	Distance < 150M
RS485 Communication Cable	RVVP2*1.0	Distance < 1000M, shield layer connect to ground
TCP/IP Communication Cable	CAT-5	Distance < 100M

### Disclaimer

The document provides information according to products specification. Visionis does not undertake any type of guarantee, express or implied warranties, including any implied merchantability, specific purposes or of the infringement. The information in the document are changed without prior notice. Visionis and its associated sales agents special statement does not assume the result of the use of Visionis equipment of any and all direct, indirect, special, in general, by chance, inevitably, punitive damages. Any user's improper operation or use of the environment problem caused by direct or indirect losses, user pays full responsibility, equipment manufacturers and related sales agents does not undertake any responsibility.

## Connection

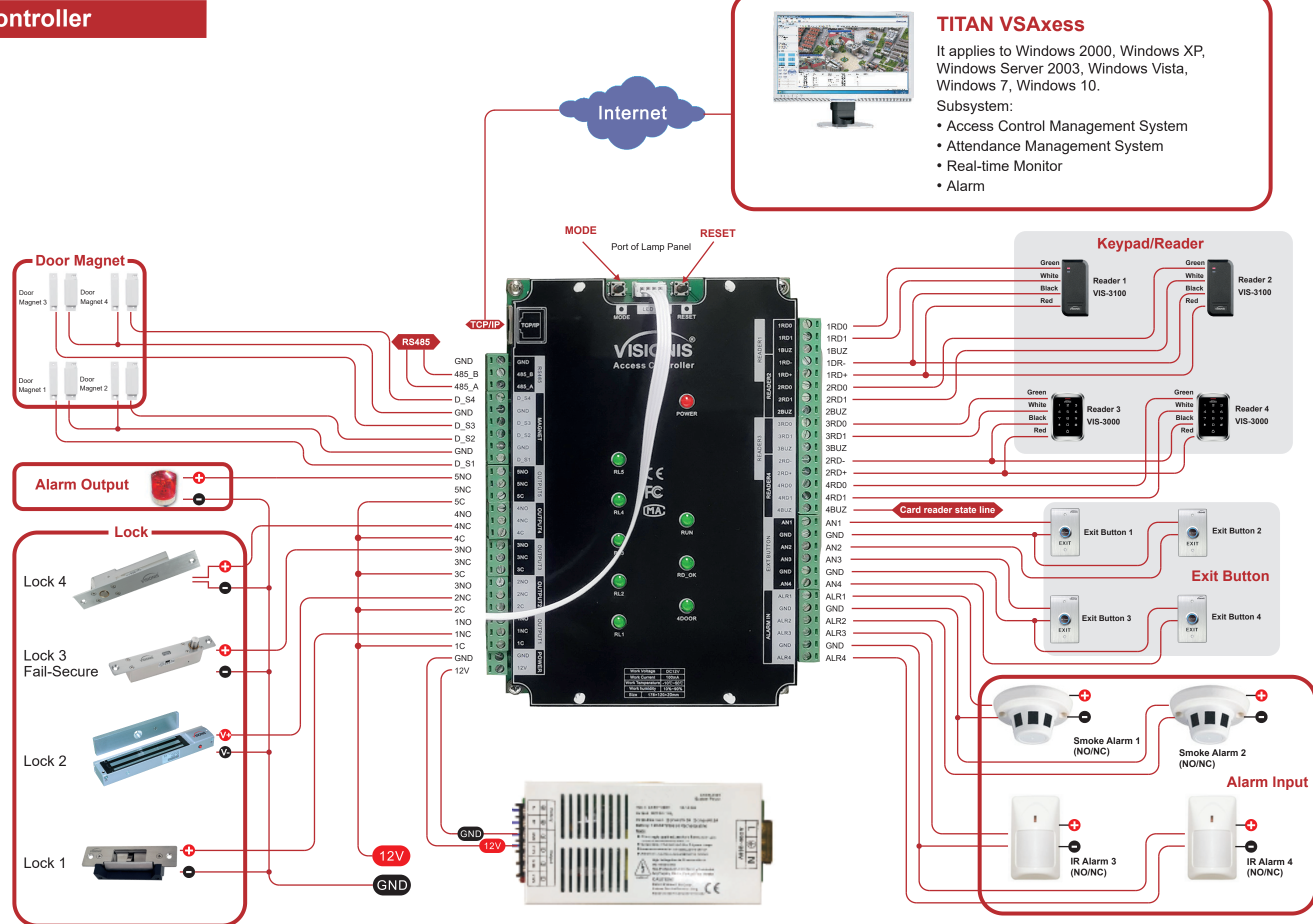
I/O	Device	Standard	Quantity	Setup
Input	Reader	Wiegand 26-40	2/4	as function
Output	Electric Lock	Switch Signal	2/4	as doors
Input	Door-magnet	Switch Signal	2/4	Support
Output	Sound-light alarm	Switch Signal	1	
Input	IR Sensor/Smoke Sensor/Others	Switch Signal	2/4	
Input	Exit button	Switch Signal	2/4	Support
Input	RS485 device	Communication	1	

## LED&Button Instruction

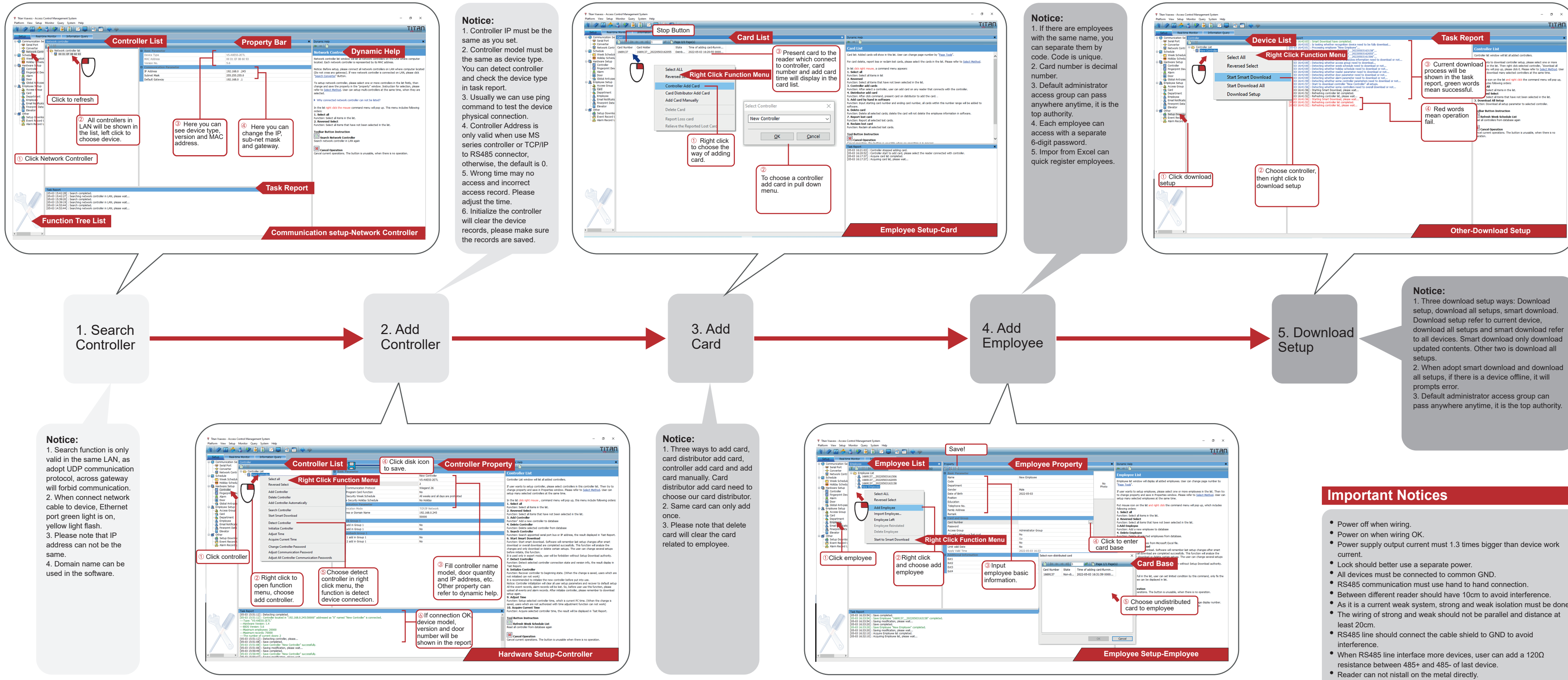
LED	RL1	RL2	RL3	RL4	RL5
Two-door	Lock1	Lock2	Magnet Alarm1	Magnet Alarm2	Alarm Output1
Four-door	Lock1	Lock2	Lock3	Lock4	Alarm (COM)

- Power: 12V power LED
- RUN: Device run LED
- RDOK: Read card status LED
- 4DOOR: The status LED of 4 doors
- RESET Key: It is used to reboot device and clear communication password. After power off, power on device again and press RESET button for 3 seconds, then you can clear communication password.

## Wiring Diagram of Access Controller



## Quick Start



The manual is a quick start for system, the user can refer to software help file or other technical files for details.