

Wallystech AP Controller User Manual

www.wallystech.com



Date:2025-1-20

User Manual

Wallystech AP Controller

Hardware-Based Wired and Wireless Device Network Controller



Industrial AP
Local Controller

Keep It Local,
Keep It Secure



<https://www.wallystech.com/>

Manage Your Network Securely and Effortlessly

Contents

Section I Getting Started

1 Introduction

- Wallys AP Controller Login
- Capture APs
- Firmware Upgrade Button
- Filtering the Device View
- Change Default Password
- Change AP Controller IP Address
- Set Up Multiple IP Addresses Across Different Network Segments
- System Upgrade and User Manage



Section II Configuration

2 Batch Configuration

- Upgrading Device Firmware
- Configure WiFi
- Upgrading Device Firmware
- Deleting Offline Devices
- Update Equipment Notes
- Importing Whitelist
- Execute Command

Section I

Getting Started



This section provides an overview of the Wallys AP Controller software and describes the initial steps required to start using the service.

Chapter 1 | Introduction

Wallys AP Controller Login

The Wallys AP Controller is a hardware-based network solution tailored for efficiently configuring multiple access points through a web browser interface. With its robust scalability, it supports the management of unlimited networks and devices.

By integrating network management and wireless controller functionalities, it allows Wallystech access points (APs) to seamlessly connect and operate as a unified network.

The following devices are supported by Wallys AP Controller:

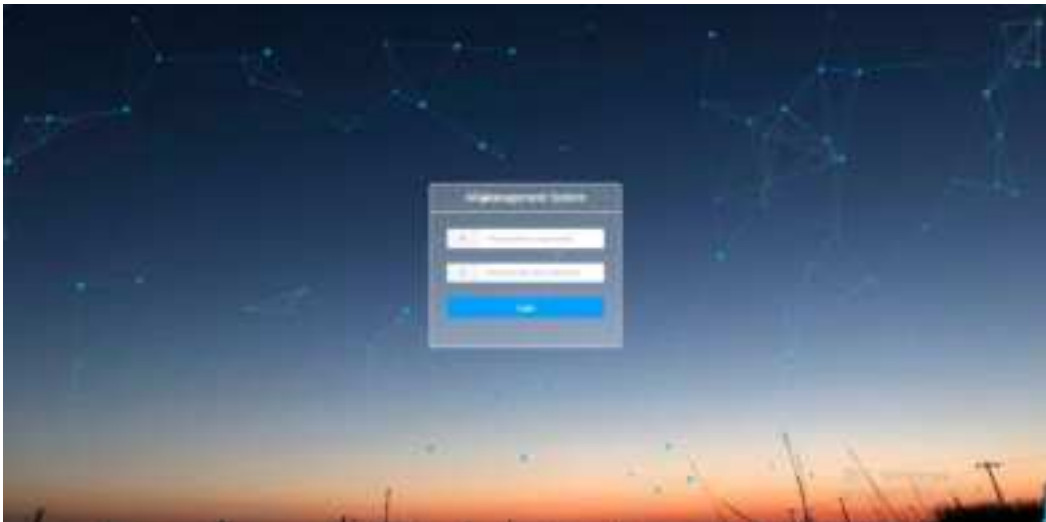
◆ **Wallys APs:** DR5018,DR5018S,DR6018,DR6018S,DR6018C,DR4019

Wallys AP Controller Login

From a web browser, go to **192.168.1.1** to login.

Default User Name:admin

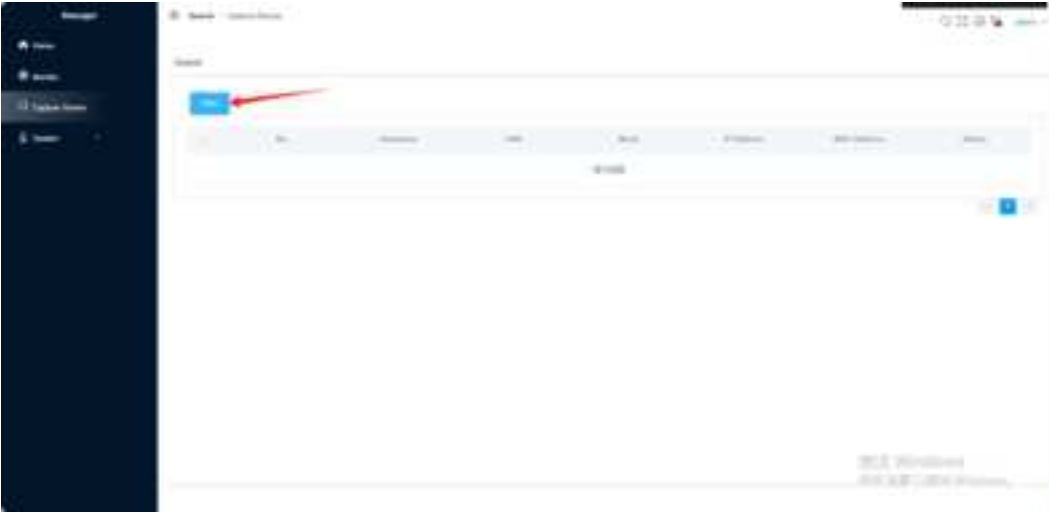
Default Password:123456



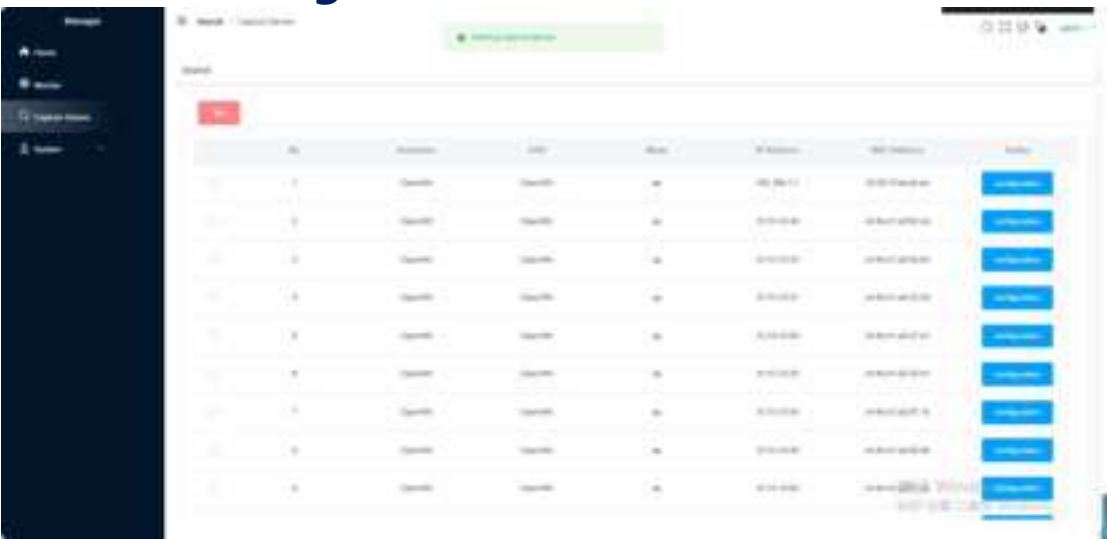
Chapter 1 | Introduction

Capture APs

Adding Devices(Capture APs)



Device Management View



Chapter 1 | Introduction

Adding Devices

Adding Devices Warning Message



Adding Devices Successful Message



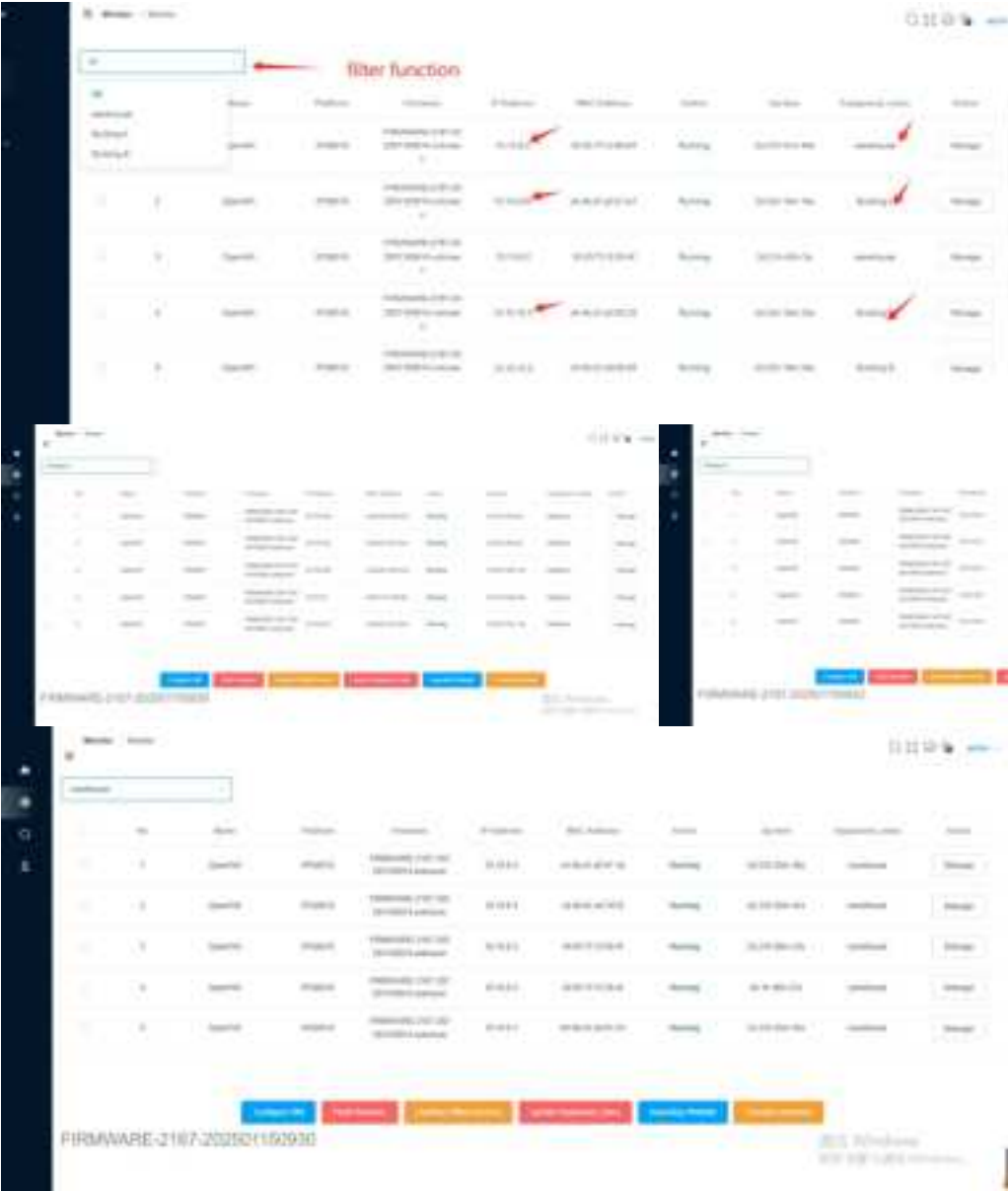
Chapter 1 | Introduction

Firmware Upgrade & Filtering

Firmware Upgrade Button



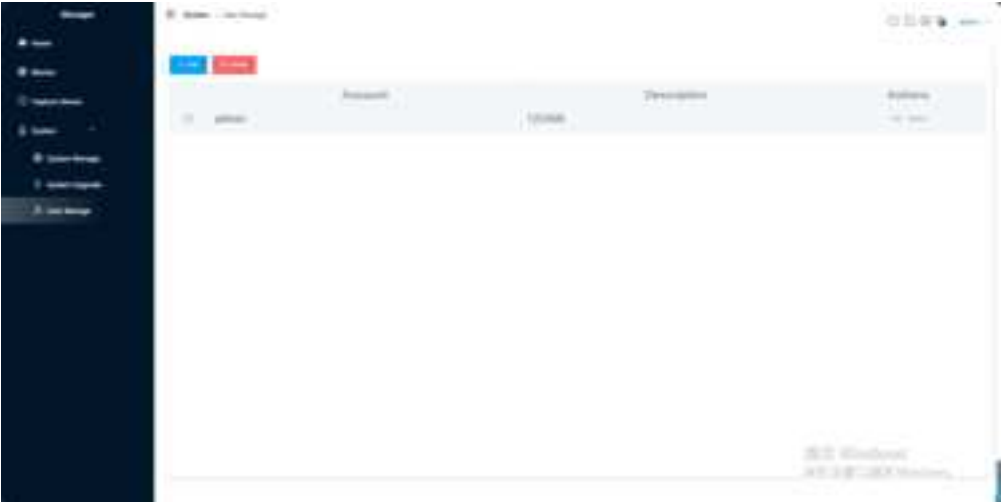
Filtering the Device View



Chapter 1 | Introduction

Change Default Password

Change Default Password



Change Default Password Successful



After New Password Applied,the webpage will auto turn to Home page.

Chapter 1 | Introduction

Change AP Controller IP Address

Change Default AP Controller IP Address



Change Default IP Address Successful

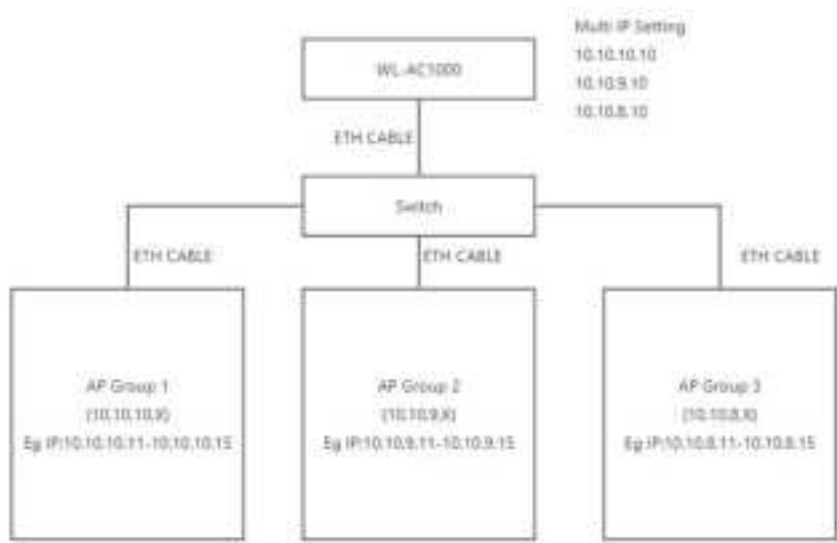


After New IP address Applied,the webpage will auto turn to Home page.

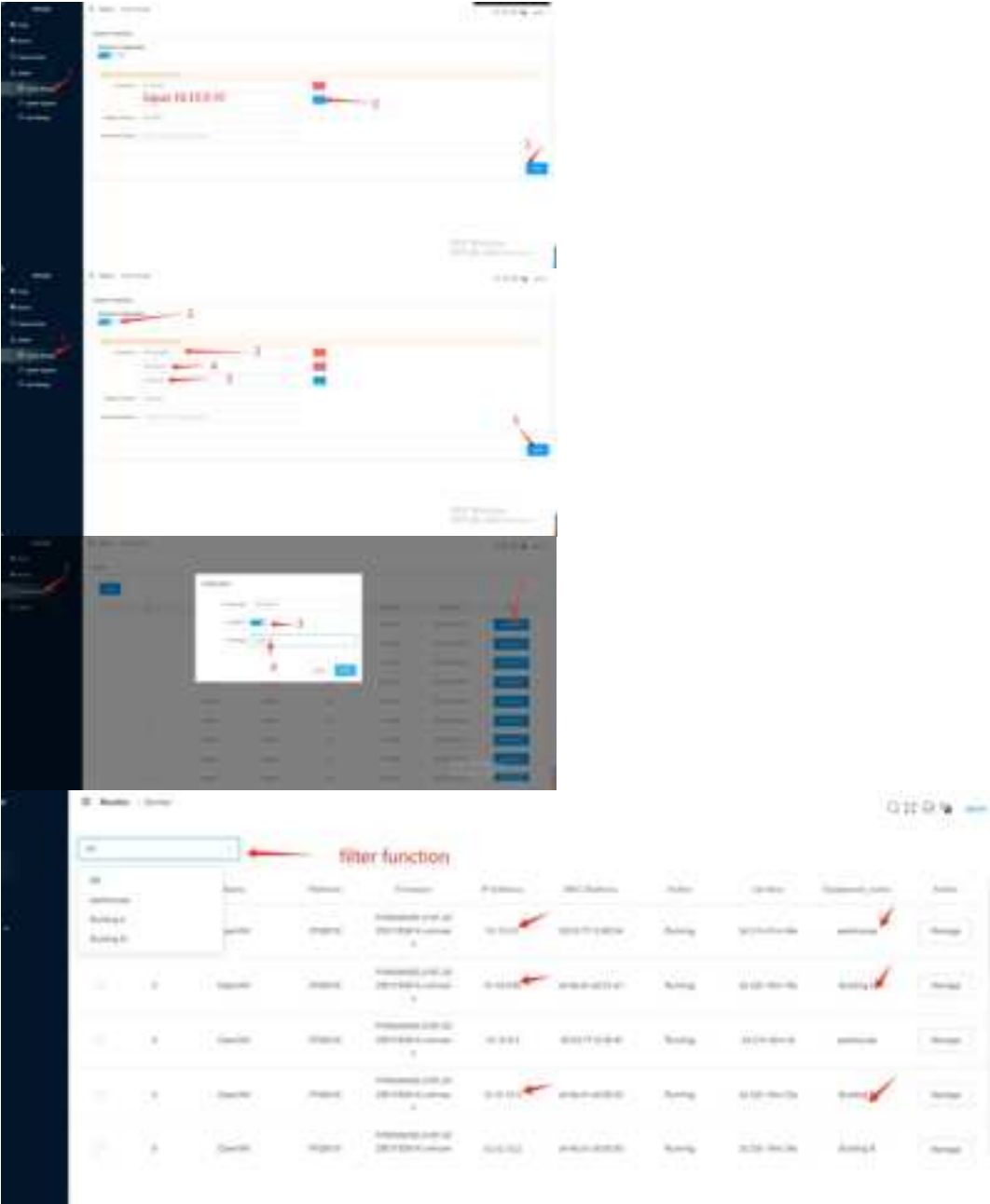
Chapter 1 | Introduction

Set Up Multiple IP Addresses Across Different Network Segments

Function Diagram



Set Up Multiple IP Address Successful



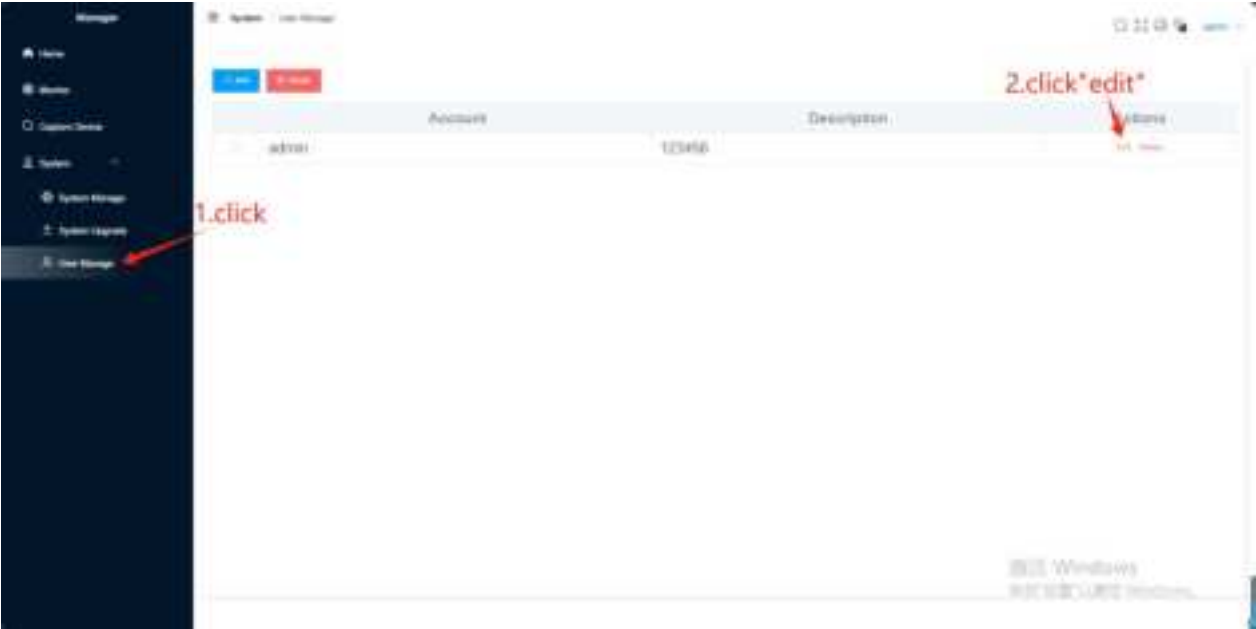
Chapter 1 | Introduction

System Upgrade

System Upgrade



User Manage



Section II

Configuration



This section provides details on configuring access point settings.

Chapter 2 | Configuration

The Dashboard

The Dashboard

The dashboard provides an overview of status for configured devices, recent activity information overview.



Monitor

The Monitor page displays a table of device status. The table has columns for ID, Name, Status, IP Address, MAC Address, SSID, and Action. The table contains five rows of data. The first row shows a device with ID 1, Name 'Client1', Status 'Online', IP Address '192.168.1.100', MAC Address '08:00:27:1234:5678', and SSID 'Client1-SSID'. The second row shows a device with ID 2, Name 'Client2', Status 'Online', IP Address '192.168.1.101', MAC Address '08:00:27:1234:5679', and SSID 'Client2-SSID'. The third row shows a device with ID 3, Name 'Client3', Status 'Online', IP Address '192.168.1.102', MAC Address '08:00:27:1234:5680', and SSID 'Client3-SSID'. The fourth row shows a device with ID 4, Name 'Client4', Status 'Online', IP Address '192.168.1.103', MAC Address '08:00:27:1234:5681', and SSID 'Client4-SSID'. The fifth row shows a device with ID 5, Name 'Client5', Status 'Online', IP Address '192.168.1.104', MAC Address '08:00:27:1234:5682', and SSID 'Client5-SSID'. The table also includes a 'Manage' button for each row. The sidebar on the left contains navigation options: Home, Monitor, Configure Device, and System. The bottom of the page displays the firmware version 'FIRMWARE-2167-202501150930' and the Windows logo.

ID	Name	Status	IP Address	MAC Address	SSID	Action
1	Client1	Online	192.168.1.100	08:00:27:1234:5678	Client1-SSID	Manage
2	Client2	Online	192.168.1.101	08:00:27:1234:5679	Client2-SSID	Manage
3	Client3	Online	192.168.1.102	08:00:27:1234:5680	Client3-SSID	Manage
4	Client4	Online	192.168.1.103	08:00:27:1234:5681	Client4-SSID	Manage
5	Client5	Online	192.168.1.104	08:00:27:1234:5682	Client5-SSID	Manage

Chapter 2 | Configuration

Configure WiFi

Configure WiFi in Batch



Configure WiFi



Chapter 2 | Configuration

Upgrading Device Firmware

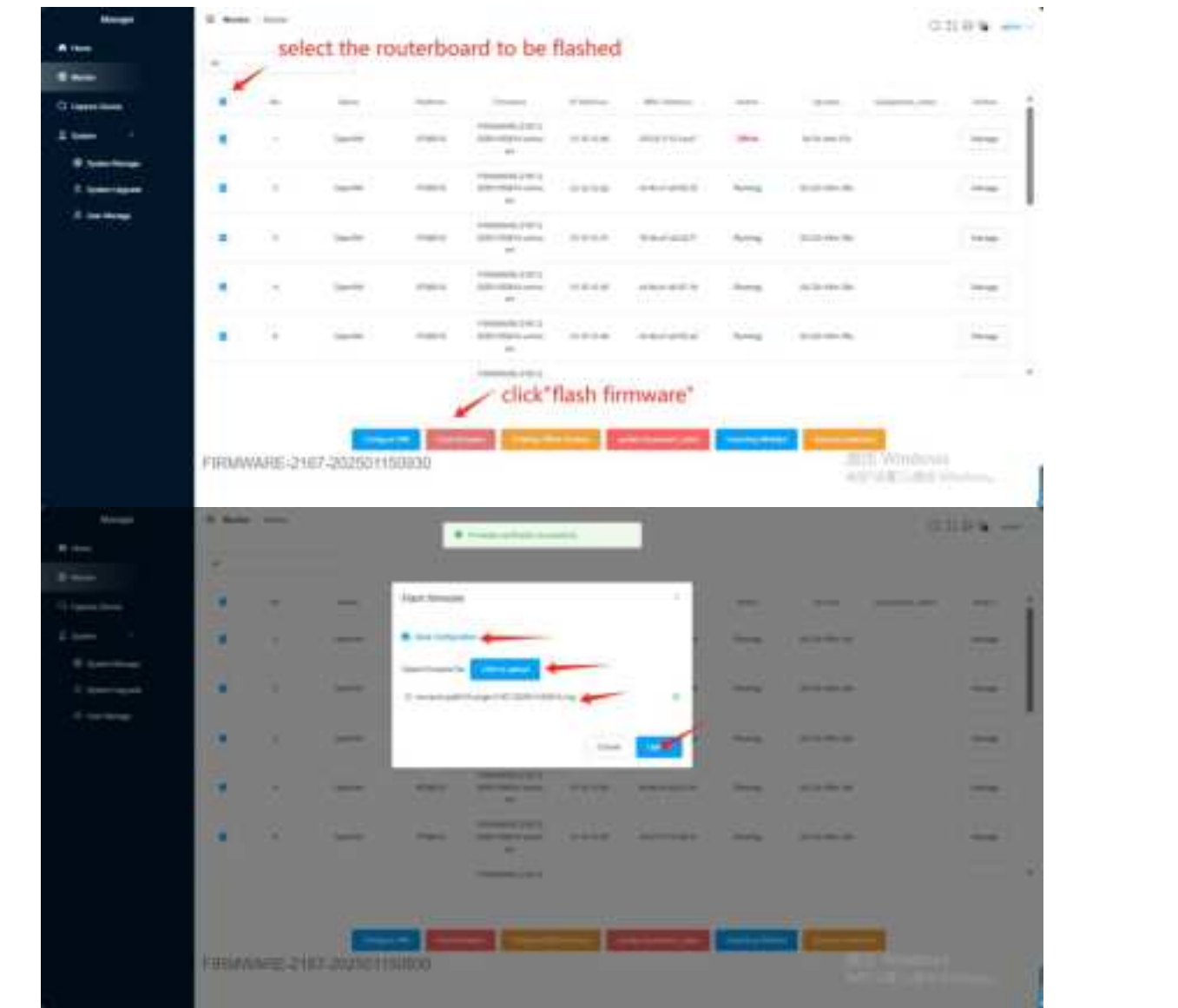
Viewing Device Information

Click a device name link in the Name column to access the detailed device information.



Upgrading Device Firmware

Click the upgrade icon in the FW column when new firmware is available for a device.

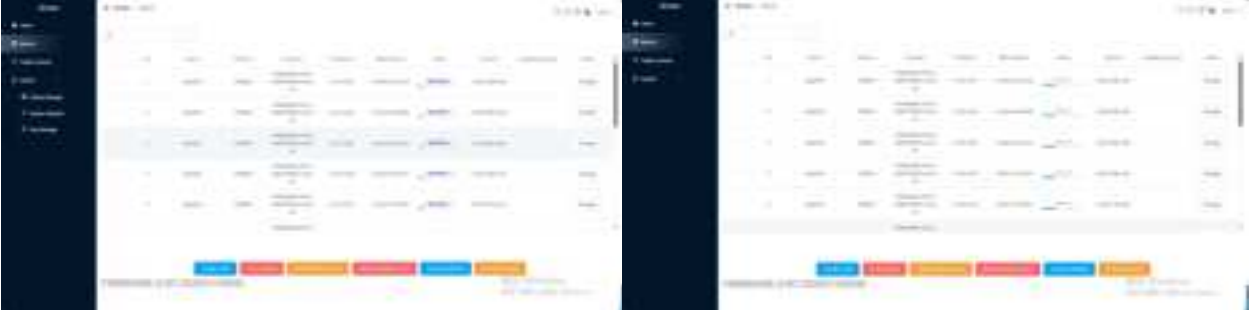


Note:checkV the box “save configuration” if need to keep the configuration remain.

Chapter 2 | Configuration

Upgrading Device Firmware

New FW Upgrading process



Upgrading Device Firmware Successful

Active: running-upgrading-flashing-upgrade success-running



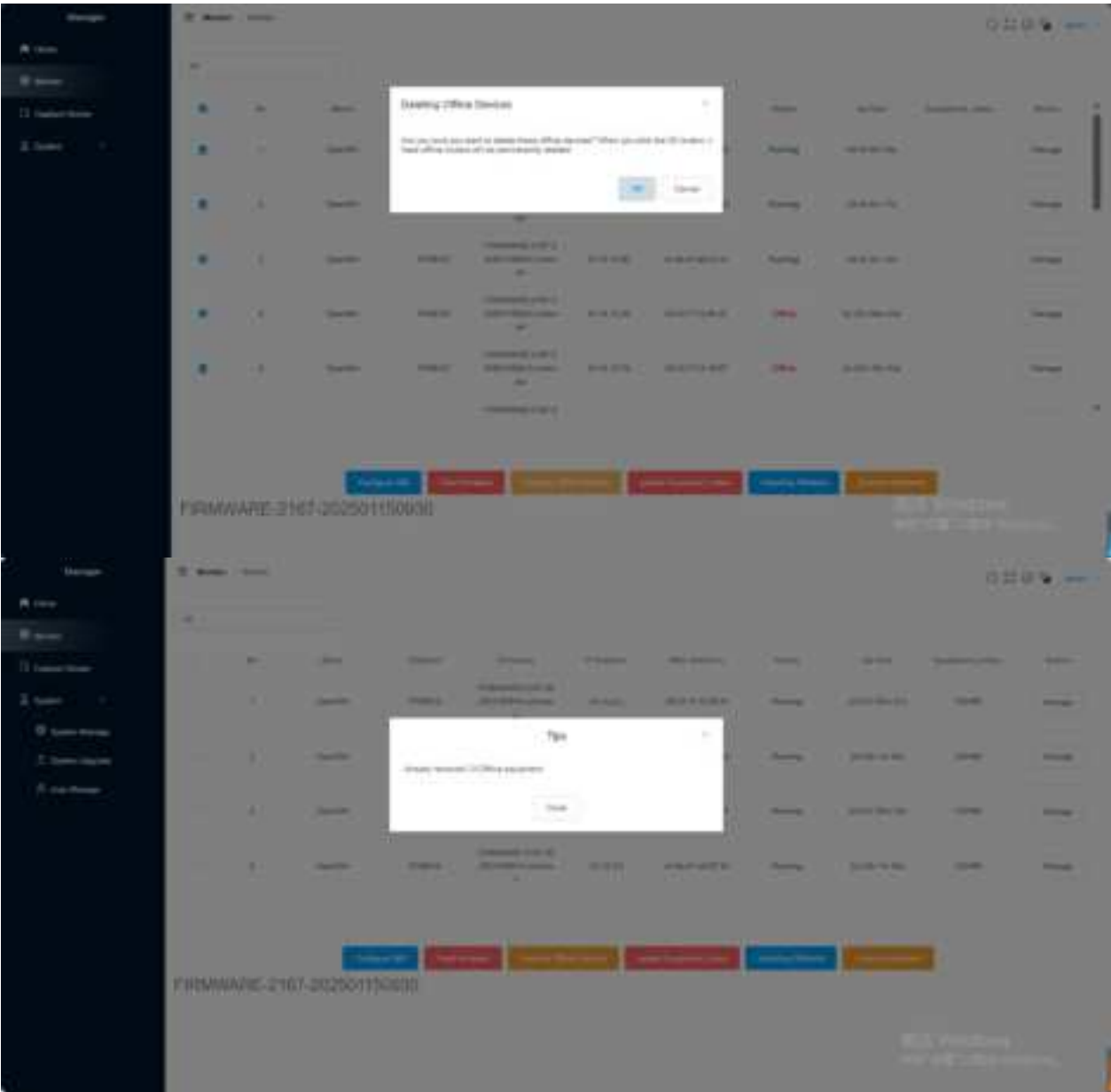
Chapter 2 | Configuration

Deleting Offline Devices

Deleting Offline Devices



Deleting Offline Devices Successful



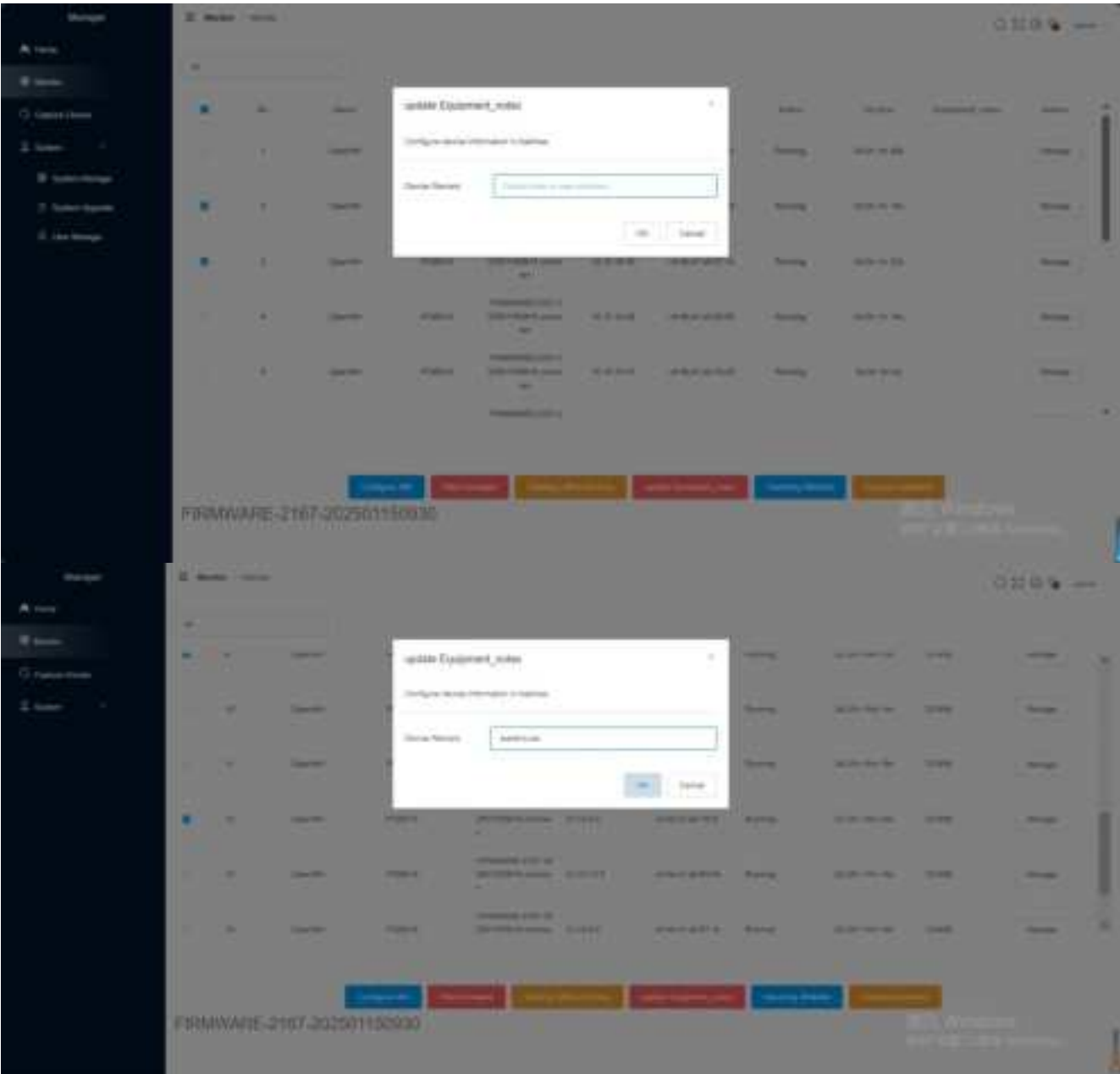
Chapter 2 | Configuration

Update Equipment Notes

Update Equipment Notes



Equipment Notes for Group Management



Chapter 2 | Configuration

Importing Witelist

Importing Witelist



Execute Command

The screenshot shows the 'Add User' dialog box in WinBox. The 'Name' field is highlighted with a red circle, and a red arrow points from it to the 'Add' button. The 'Add' button is also highlighted with a red circle. The 'Add' button is located at the bottom right of the dialog box.