

INSTRUCTIONS

Replacing the Display with a Frame in Android-based Smartphones

UTS_GSM
uts.groua.poland@gmail.com

Preparing

Welcome! In this guide, we will show you how to replace the display in Android-based smartphones. This will require the appropriate tools, parts, and some technical skills. The tools you received with the display are suitable for the replacement, but you will also need a few additional items:

- A hairdryer
- A silicone mat or a mouse pad

First, turn off the device and remove the SIM card tray. Now heat the back cover with a hair dryer to loosen the adhesive. We recommend heating the entire surface for about 5 minutes. Using the suction cup, slowly pull the cover off, and at the point where it first peels off, help yourself with a spatula or playing card.



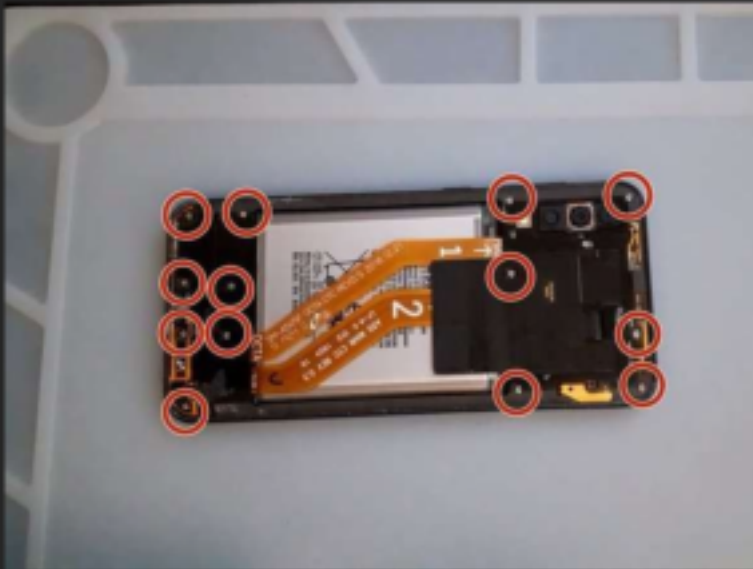
Run a spatula or card along the entire surface of the lid until it peel off. We recommend that you do not push the spatula too far, so as not to break the tapes or cables.



At this stage, we recommend taking photos of the open smartphone so you don't forget what it must look like when you reassemble it. Clean any leftover adhesive tape from the cover to get rid of any areas that are unglued areas. You can use a spatula.



Use a screwdriver to remove all the screws from the plastic frame. Remove the plastic frame using a spatula as shown in the picture. We recommend starting to the left or right of the battery. Be aware of the tapes and cables hidden under the frame





After dismantling the frame, the first thing to do is to remove the battery strap, it is necessary!

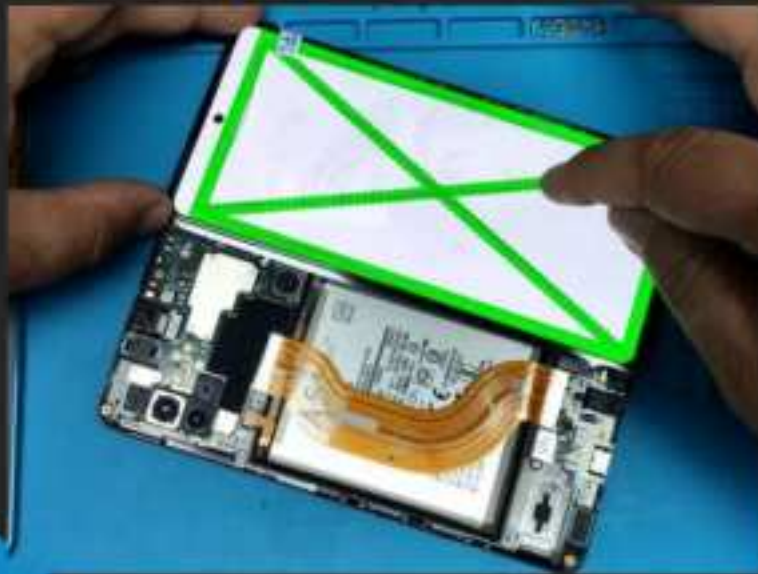


Disconnect the ribbon of the installed display and connect the new display.
Connect batteries to the board and start the gadget. To play the display test:
Open the Phone application, click the Keyboard option and type:

##0##*

Click Call.

Unfortunately this does not work on all models and versions of Android.



Remember!

- Kindly check the LCD and touch screen thoroughly (minimum test period 15 minutes) before actual assembly (gluing into housing).
- The buyer is obliged to check the display himself before installation.
- Do not tear off the protective film and do not paste the display until you are sure that the display has no defects and works properly.
- If the display does not work properly, please report it to us using the Allegro message. We will be happy to help you solve any problems.

Disconnect the batteries before you disconnect the display and the rest of the signal tapes, sensors. Only use a plastic paddle to avoid damaging any of the components. Only after you have disconnected all the tapes and sensors can you remove the motherboard, charging charging board, speakers, vibration motor and batteries. We recommend that you use a hairdryer to loosen the glue before removing.



CAUTION, the battery may explode if removed carelessly!

Heat the display surfaces firmly before removing the battery. Do not use sharp objects that could damage the battery. Do not bend the battery.



Notes and recommendations

- After removing all parts from the phone frame, remember to bring all the rubber bands and washers from the old frame to the new one. This is essential for proper operation of the phone's functions.
- We recommend installing the batteries with double-sided tape.
- We recommend that you apply the adhesive in an even and thin layer across the country of the frame plastic frame itself. After fitting, reinforce the cover with rubber bands and leave it for 2-3 hours. You can clean up any glue residue with a spatula or wet napkin.