

Model: SP-B150

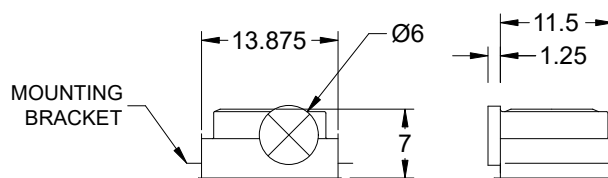
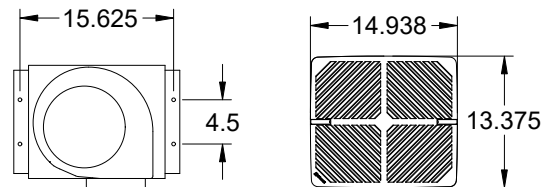
Ceiling Exhaust Fan

Standard Construction Features:

- Corrosion resistant galvanized steel scroll and housing - White designer non-yellowing grille - Round outlet duct collar with integral backdraft damper - Single inlet forward curved wheel - Plug type disconnect - Adjustable mounting brackets

Selected Options & Accessories:

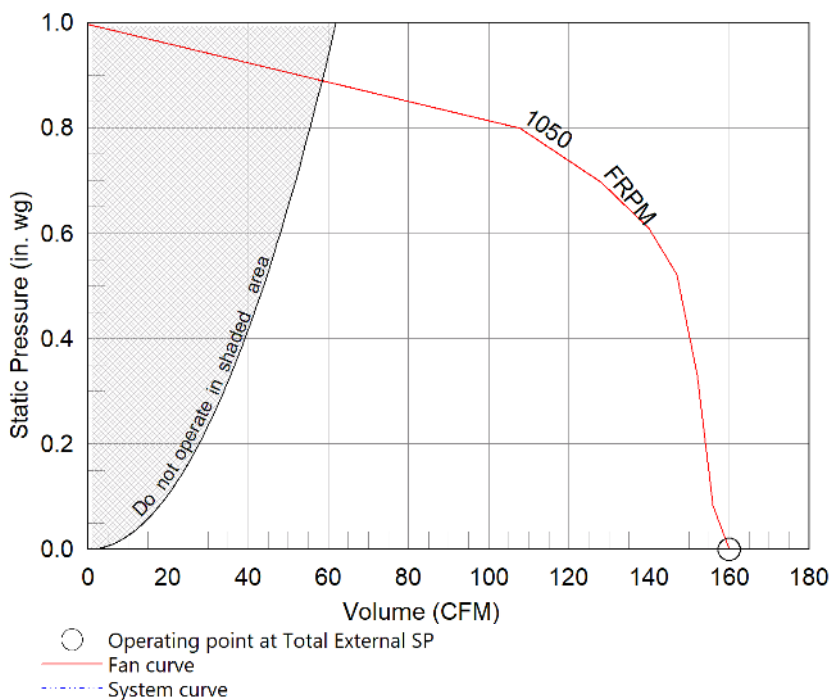
Motor with Thermal Overload
Motor with CSA Approval
Motor with 40 Degree C Ambient Temperature
UL/cUL 507 Listed - Electric Fan
Round Duct Connection
Adjustable easy installation mounting bracket
Standard Grille
Polypropylene Wheel Material
Can Be Used to Comply with: ASHRAE 62.2 and Washington State Energy Code



Dimensional	
Quantity	5
Weight w/o Acc's (lb)	10
Weight w/ Acc's (lb)	10

Performance	
Requested Volume (CFM)	150
Actual Volume (CFM)	160
Total External SP (in. wg)	0
Fan RPM	1050
* FLA (A)	1.8
Elevation (ft)	5,138
Airstream Temp.(F)	70
Air Density (lb/ft3)	0.062
Sones	2.5

Motor	
Motor Mounted	Yes
** Input Watts (W)	128
Voltage/Cycle/Phase	115/60/1
Enclosure	ODP



Notes:

All dimensions shown are in units of in.
*FLA is approximate and will vary slightly with the motor.
Sones - calculated using AMCA 301 at 5 ft
** Wattage is shown at free air.
** Wattage is approximate and may vary between motors.

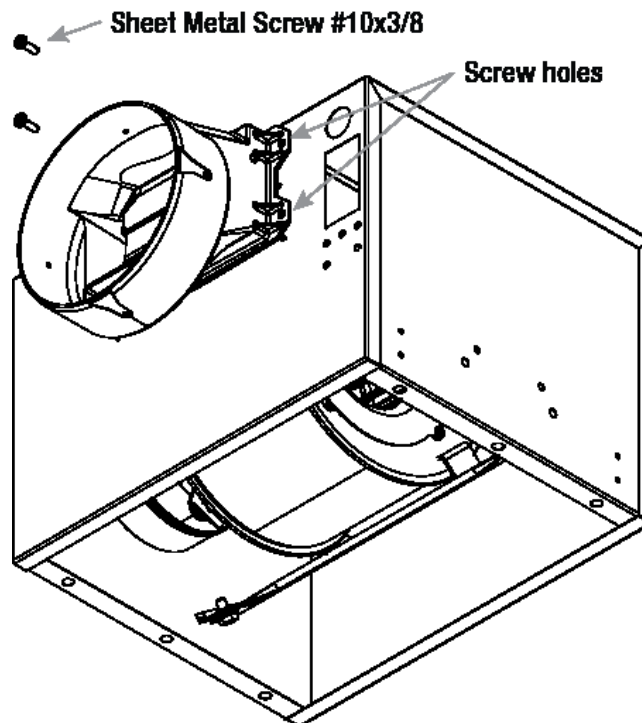


Round Duct Connector

Model: RDC

Standard Construction Features:

-Constructed of Polypropylene - Replaces the square discharge duct connector and damper using the existing mounting holes



Notes: All dimensions shown are in units of in.