



Nanoleaf Lines

Smarter Kit

Quick Start Guide



Detailed Tutorials & Warranty

go.nanoleaf.me/mylines

What's in the Box



9x

Light
Lines



9x

Mounting
Connectors



9x

Connector
Caps



1x

Controller
Cap



10x

Mounting
Plates & Tape



1x

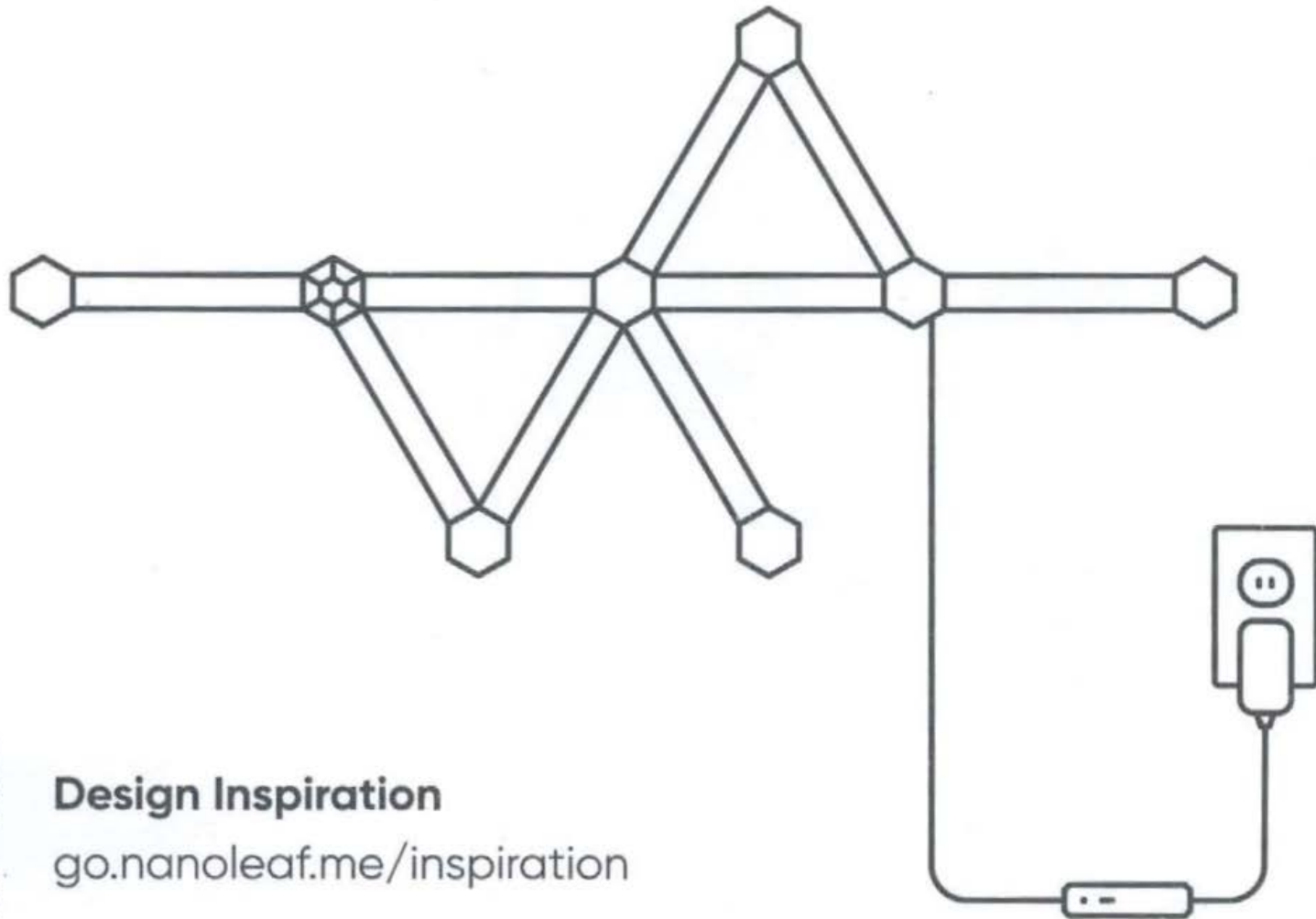
Processor &
Power Connector



1x

Power
Supply

Overview

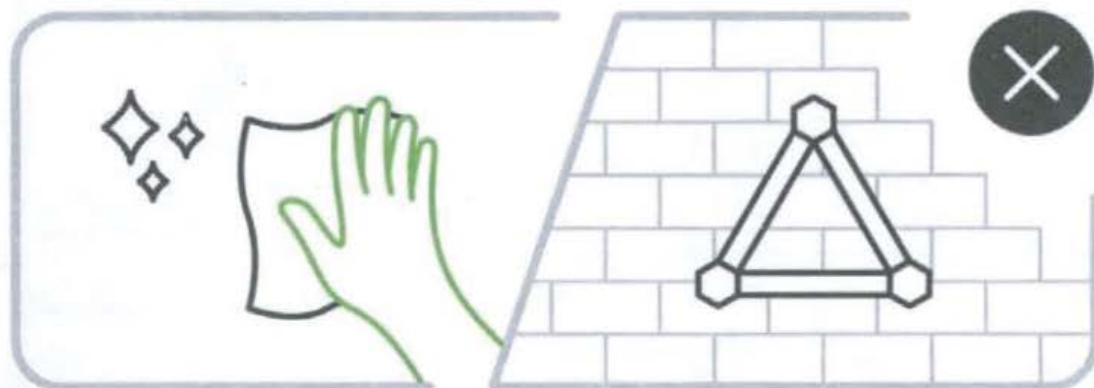


Design Inspiration

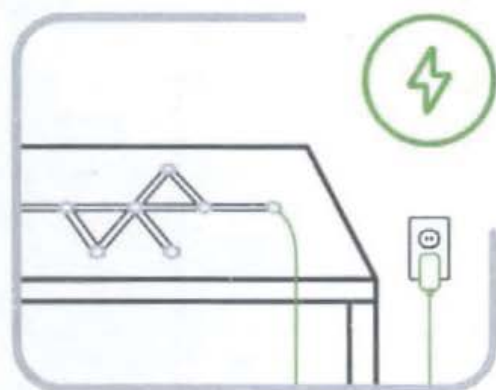
go.nanoleaf.me/inspiration



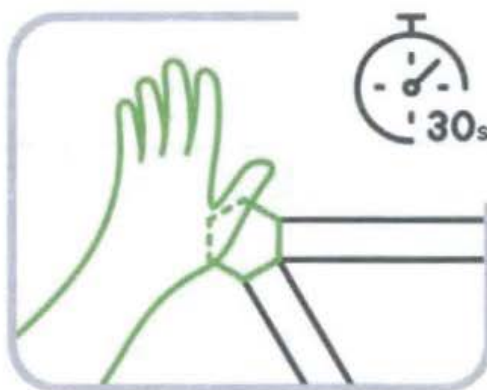
Important Installation Tips



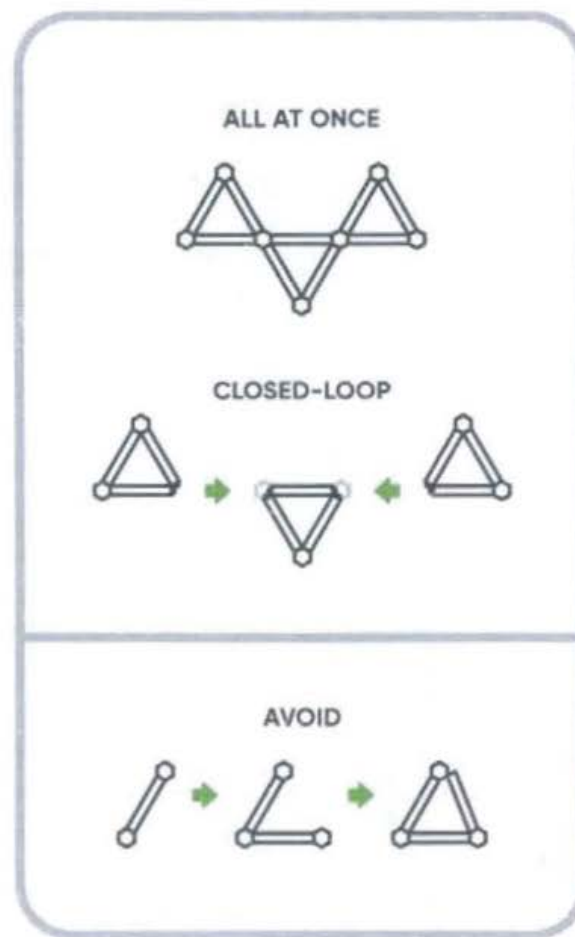
Clean your surface of dust, moisture and oil. Tape is **NOT** recommended for textured, porous, and ceiling surfaces (ie. wallpaper or brick walls). For ceiling installations, or to learn how to use the screw mount option - go to go.nanoleaf.me/mylines.



Before mounting, lay your design out on a table and power ON to ensure everything is working.

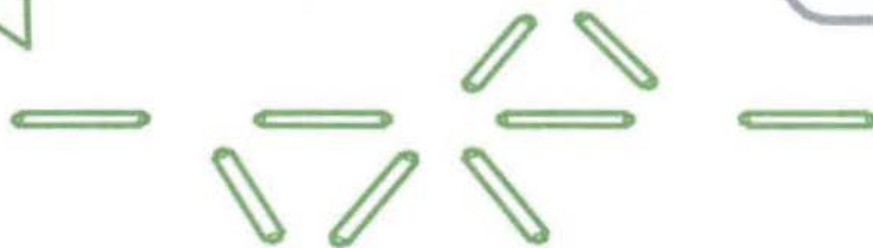
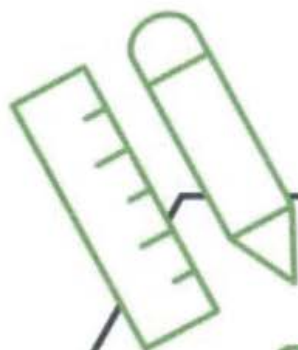


To secure your layout, **press and push** each of the mounting connectors against the wall for 30 seconds.



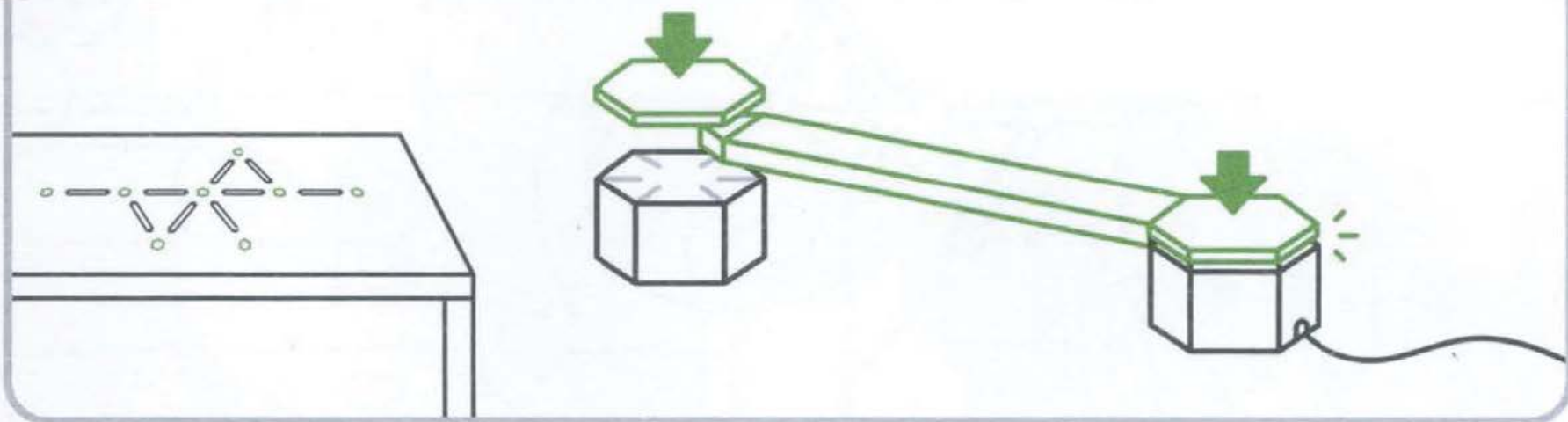
When mounting, grab a friend to help! For the best result, mount your layout **all at once**. Or for larger layouts, mount in **closed-loop** sections (triangles, hexagons, etc).

1

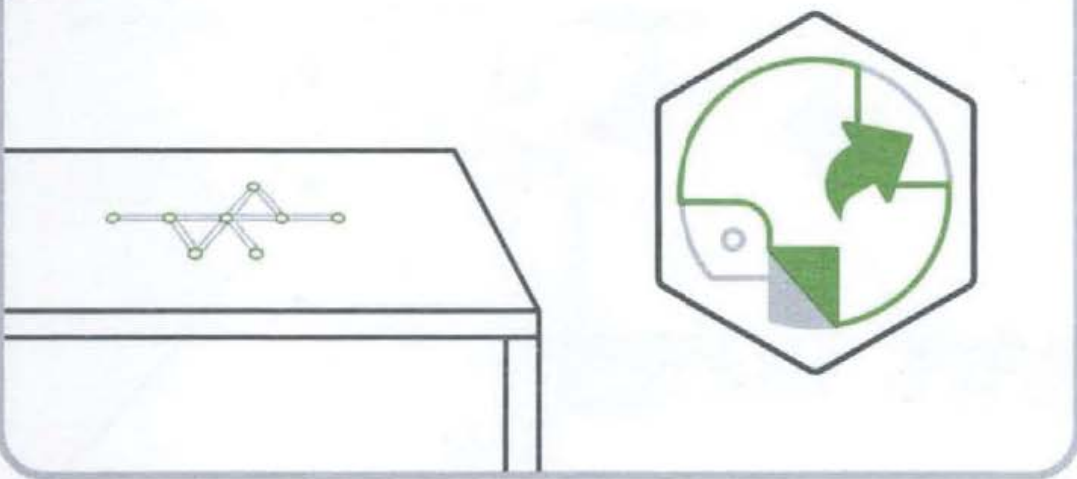


Nanoleaf App
Layout Assistant

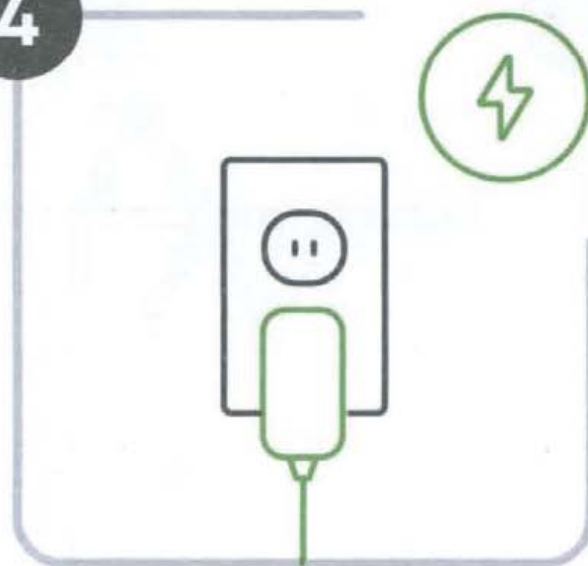
2



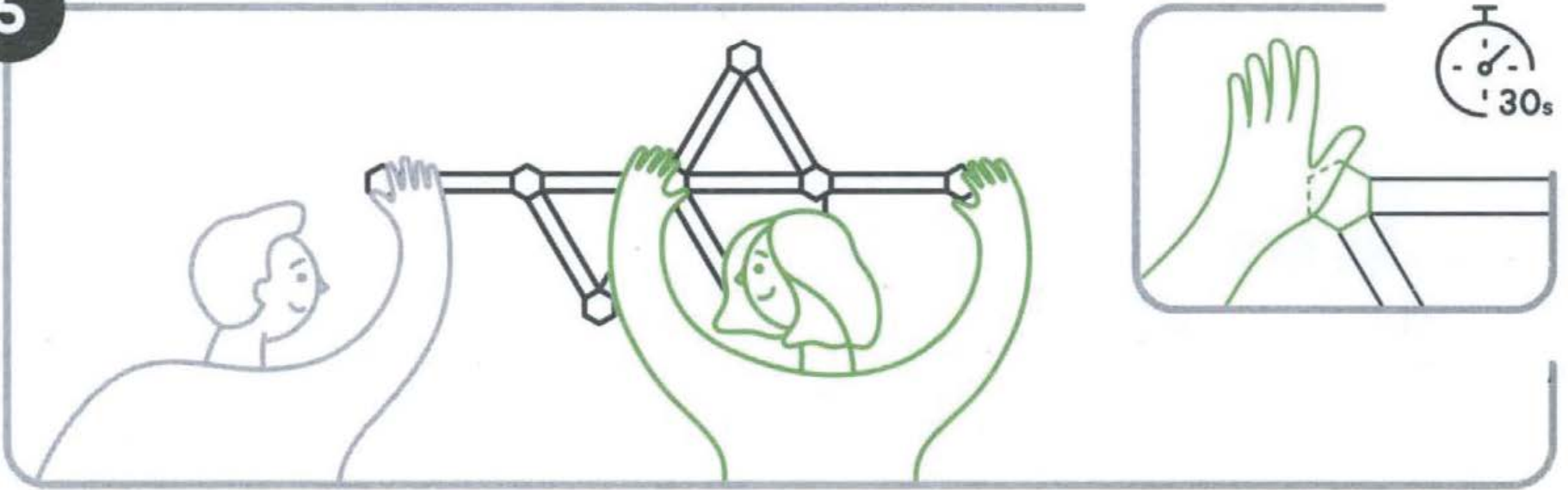
3



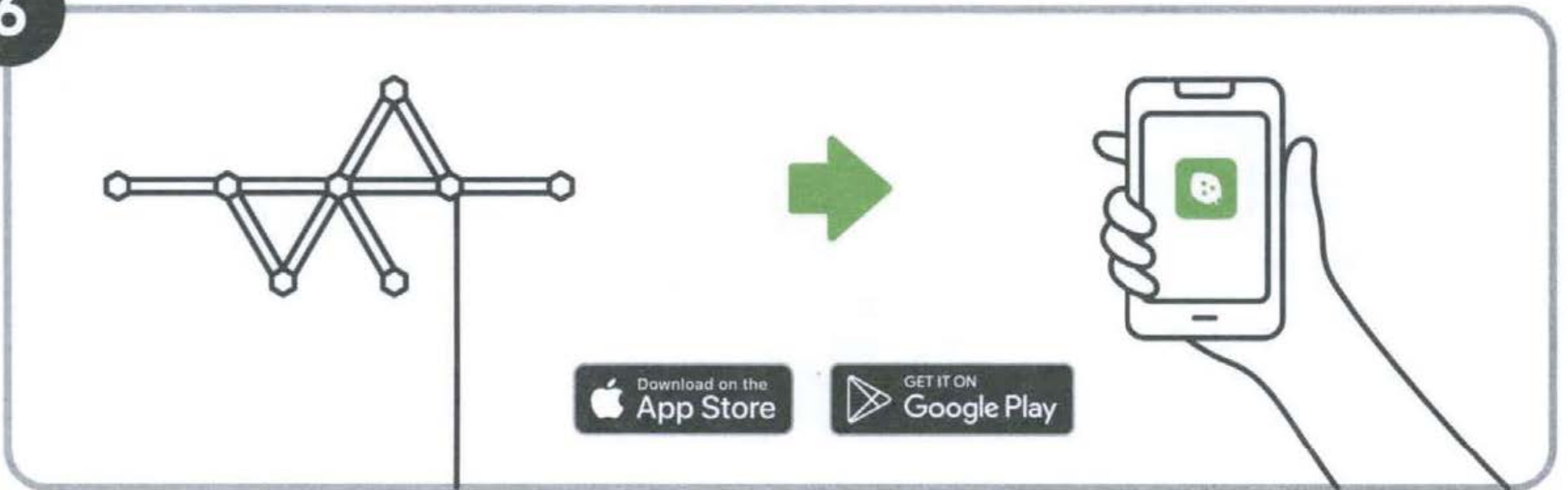
4



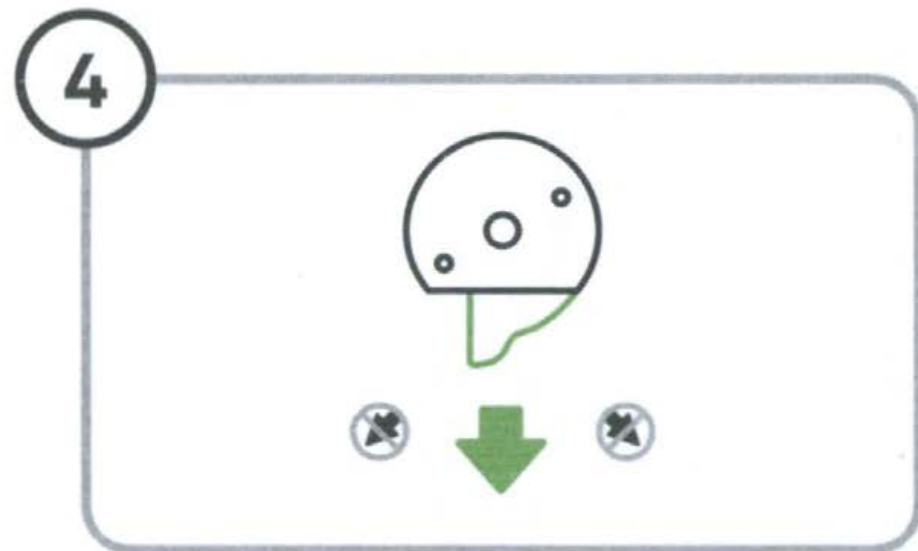
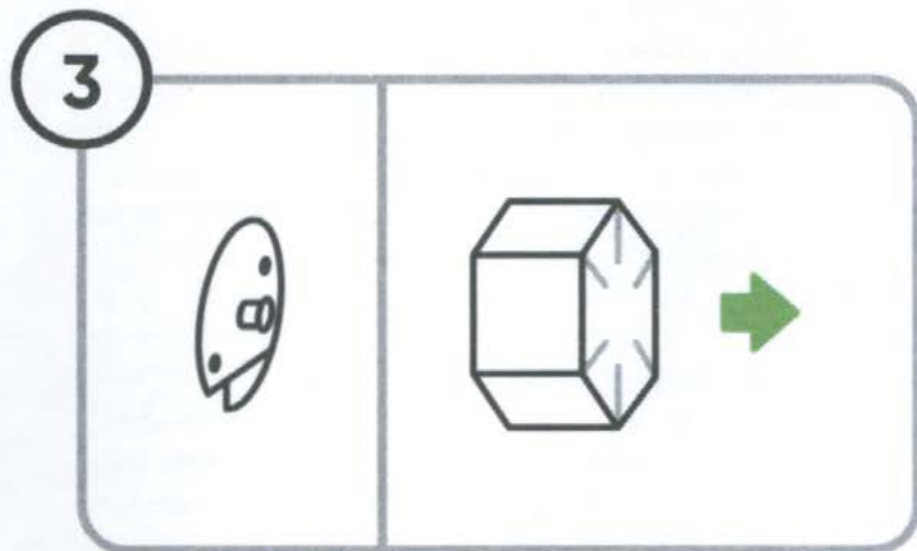
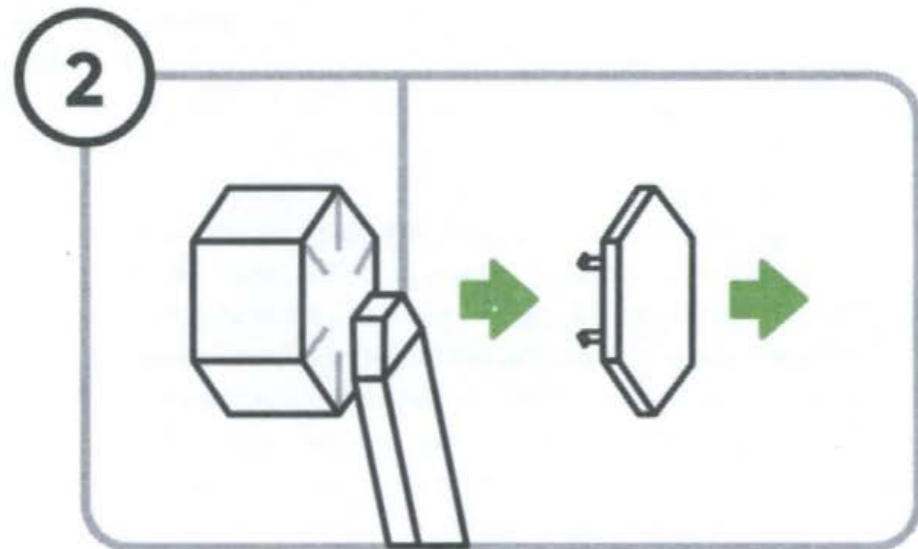
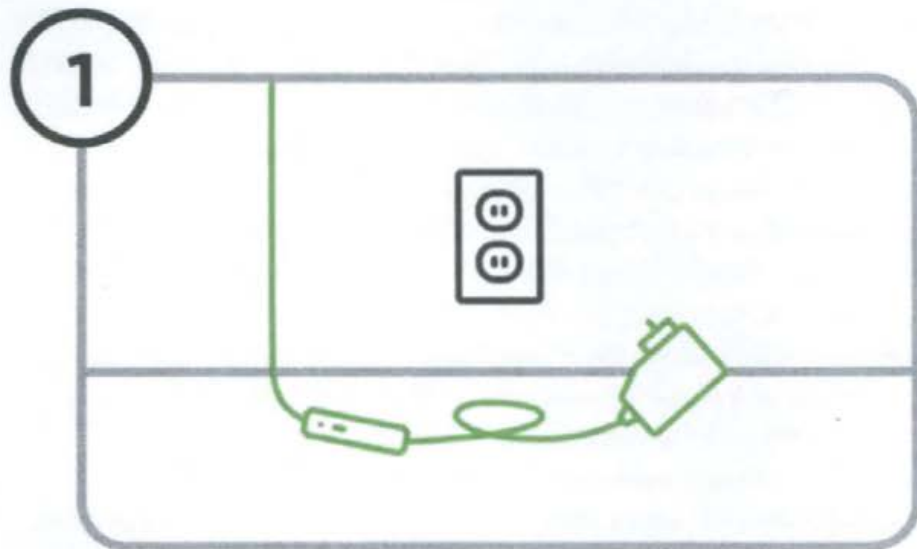
5



6



Dismounting Your Lines



EN WARNINGS & CAUTIONS Please read this safety information carefully and keep this document for future reference. Help articles and customer support is always available at <https://go.nanoleaf.me/support>. This Nanoleaf® product is not designed, certified, nor intended for use in: enclosed locations that limit the flow of air and/or trap heat. Product is intended for environment temperature of 0-40 degrees Celsius and < 95% RH; emergency exits, emergency lighting, or other use cases involving critical systems for human safety; in conjunction with 3rd party devices that are not approved by Nanoleaf® for use with Nanoleaf® products; locations or use cases where there is a risk of electric shock; outdoor areas, regardless of weather conditions; wet or damp conditions; excessively hot environments that are consistently above 40 degrees Celsius for extended periods of time (for example: near ovens, space heaters, clothing dryers); excessively humid areas; regions or countries other than that in which the product was intended for and certified for sale in. When using this Nanoleaf® product: Do not open or disassemble the device, as this will void the warranty and make the product unsafe for use. While connected to the electrical supply of the building, line voltages will be present in the power supply, panels, linkers, so do not place any metallic or conductive objects near any exposed metal contacts on any component. Unplug the power supply unit from the power source before dismounting the product. Do not allow small children to operate this device without adult supervision. This device contains small parts that may be a choking hazard to small children. Loose or dangling cords may cause an entanglement hazard to small children. Do not leave cords dangling or loose on the floor to help prevent accidents from tripping. Do not clean the device with liquid or sprays when it is connected to power. Clean the panels with a soft dry cloth, and do not use harsh cleaning agents. Do not step on any part of the device, as this will cause breakage. Do not submerge any part of the device in water, or expose any part of the device to water. Do not attach the product together with any connector or device other than original equipment manufactured by Nanoleaf®. Do not puncture any part of the device with sharp objects, as this will cause the device to cease working as designed and may present a safety hazard. If adhesive tape is a component of this product, please note that it is not designed to be used with unpainted brick wall, wallpaper, uneven/textured surfaces, or highly porous surfaces. If applicable, do not use double-sided tape to attach any part of the device to a ceiling or surface greater than 90 degrees relative to the floor, as the device will eventually fall down—creating a safety hazard and risk of damage to the device. Optional secure mounting solutions for these use cases are available, sometimes through added accessories offered for purchase separately. Your warranty DOES NOT COVER damage caused by falling devices. The flexible cable and power supply cannot be replaced by another third party product. If the cable is damaged, the entire controller and power supply should only be replaced with original equipment manufactured by Nanoleaf®. Using any non-approved replacement component will void the warranty and may present a serious safety hazard. This Nanoleaf product is primarily intended for decorative use, with RGBW output function that can dim.

WI-FI/RF This equipment has been tested and found to comply with the limits of a Class B digital device, pursuant to part 15 of the FCC Rules and the Canadian ICES-003 Class B specifications. These limits are designed to provide reasonable protection against harmful interference in a residential installation. This equipment generates, uses and can radiate radio frequency energy and, if not installed and used in accordance with the instructions, may cause harmful interference to radio communications. However, there is no guarantee that interference will not occur in a particular installation. If this equipment does cause harmful interference to radio or television reception, which can be determined by turning the equipment off and on, the user is encouraged to try to correct the interference by one or more of the

following measures: Reorient or relocate the receiving antenna; increase the separation between the equipment and receiver; connect the equipment into an outlet on a circuit different from that to which the receiver is connected. Consult the dealer or an experienced radio/TV technician or visit <https://go.nanoleaf.me/support>.

FREQUENCY RANGE

2.4GHz Wi-Fi: 2412-2462 MHz, Max RF e.i.r.p power < 20 dBm

2.4GHz Radio: 2402-2480 MHz, Max RF e.i.r.p power < 10 dBm

NFC: 13.56MHz, Max RF e.i.r.p power 0 dBm

WARRANTY INFORMATION This product is covered by a limited warranty from Nanoleaf®: a two-year complimentary replacement of defective hardware. For full details visit: <https://go.nanoleaf.me/warranty>.



DISPOSAL OF YOUR OLD PRODUCT Your product is designed and manufactured with high-quality materials and components, which can be recycled and reused. When this crossed-out wheeled bin symbol is attached to a product, it means that the product is covered by European Directive 2012/19/EU. Please find out about your local collection system for electrical and electronic products. Please act according to your local rules and do not dispose of your old products with your normal household waste. The correct disposal of your old product will help to prevent potential negative consequences for the environment and human health.



Still Need Help?

go.nanoleaf.me/support

- FR** Besoin d'aide? go.nanoleaf.me/support
- ES** ¿Aún necesita ayuda? go.nanoleaf.me/support

Models: NL59-K-0003LW-9PK
NL59-K-0003LW-9PK-AMZ
Rating Input: 120V AC 60Hz

Models: NL59-K-0005LW-9PK
NL59-K-0007LW-9PK
NL59-K-0016LW-9PK
NL59-K-0017LW-9PK
NL59-K-0002LW-9PK-UK
NL59-K-6002LW-15PK-UK
Rating Input: 100-240V~, 50/60Hz

Rated Power: 25W (9PK); 40W (15PK)

PSU Max Power: 48W

Color Temperature: 5700K-6300K+RGB

FCC ID: 2AEWY-NL59

IC: 20489-NL59

Nanoleaf Canada

#400 - 100 Front Street East
Toronto, ON
M5A 1E1, Canada

Nanoleaf Europe SAS

11 Rue de Lourmel
75015 Paris
France

Nanoleaf Europe SAS

P/A 4 Eyes Ltd, Bay House, Cocks Hill,
Perranzabuloe, Cornwall TR6 0AT,
United Kingdom

Manufacturer

NanoGrid Limited
#1301-483A Castle Peak Road,
Kowloon, Hong Kong





@nanoleaf



@nanoleafofficial



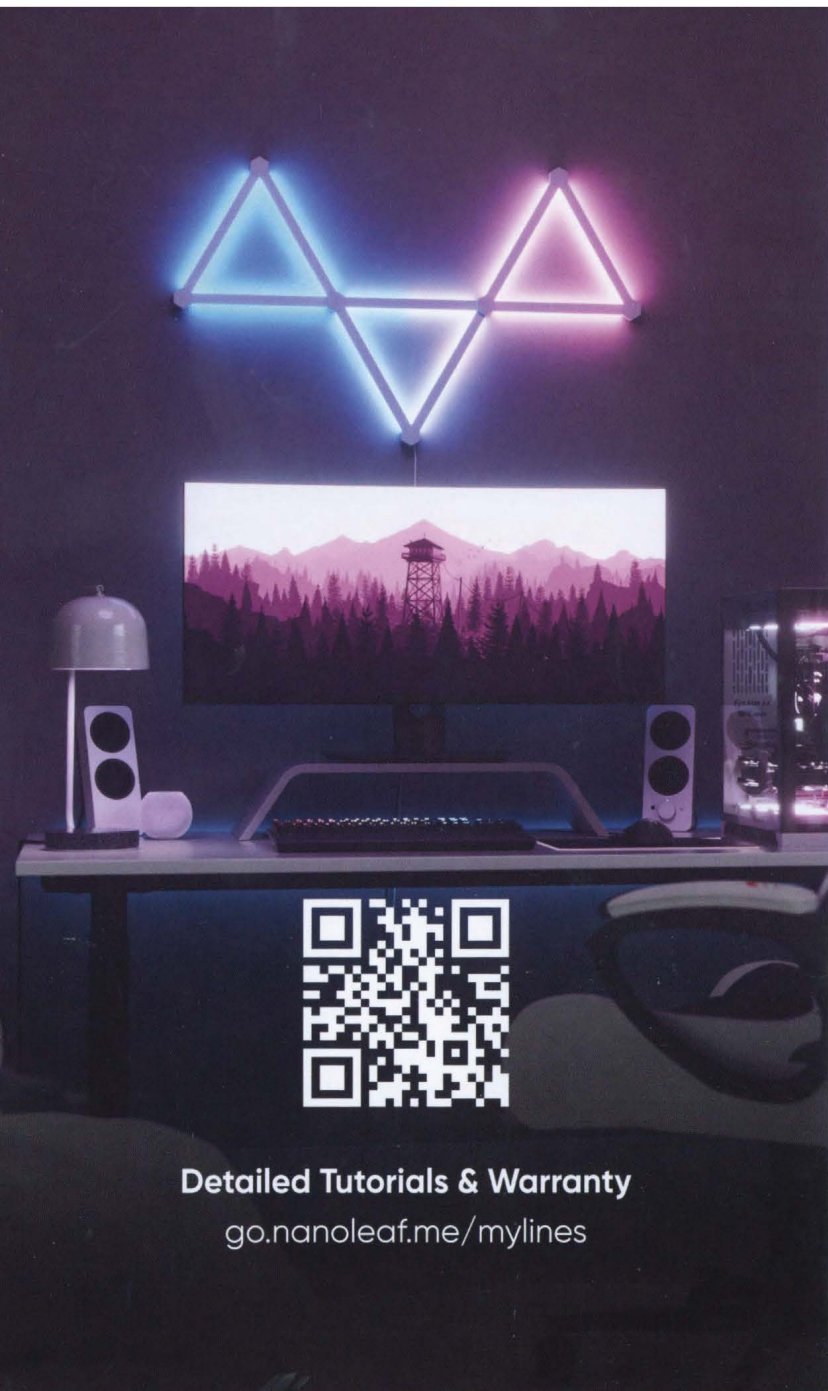
/thenanoleaf

Learn more at
nanoleaf.me

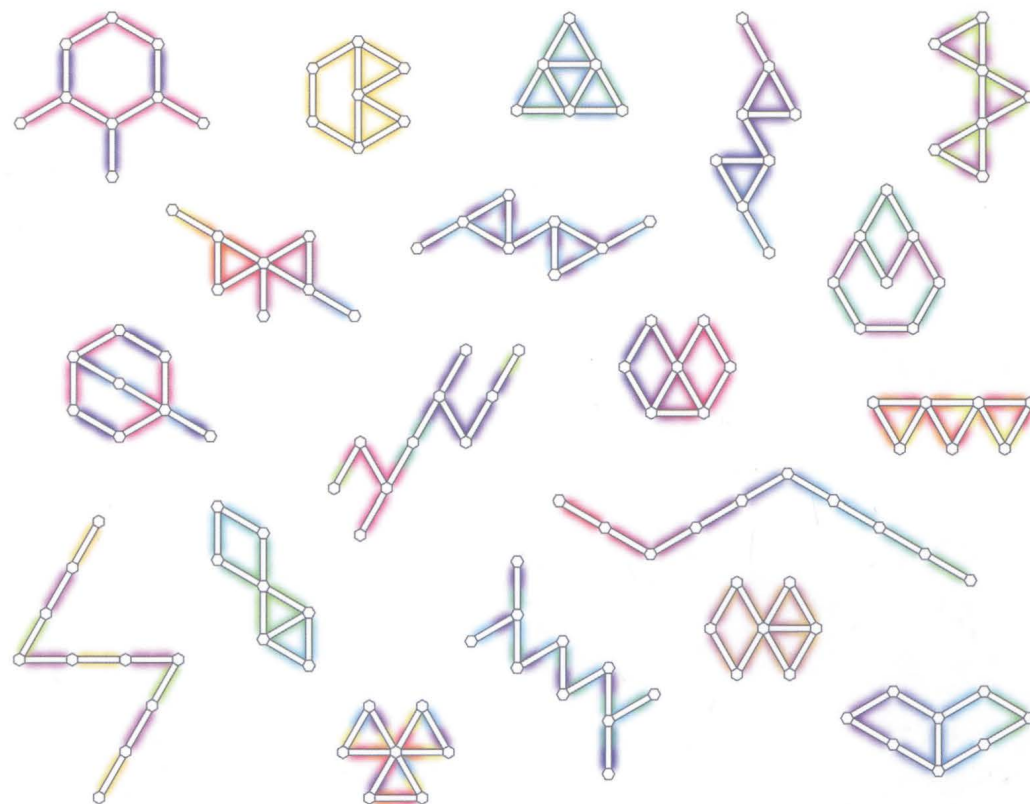


nanoleaf[®]
Smarter by Design

**Color Outside
the Lines**



Detailed Tutorials & Warranty
go.nanoleaf.me/mylines



Expand Your Design
with Expansion Packs
go.nanoleaf.me/lines



iOS



Android

