

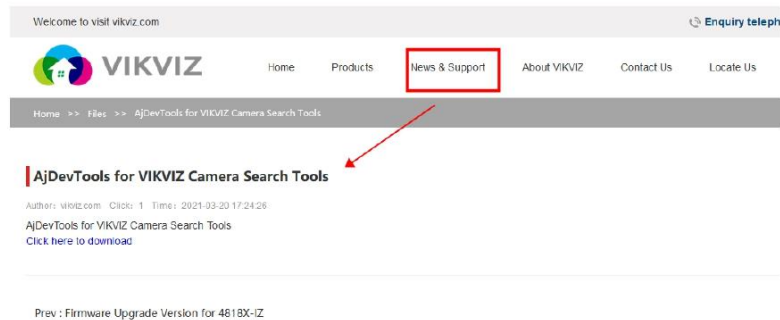
VIKVIZ Network Camera

User Manual

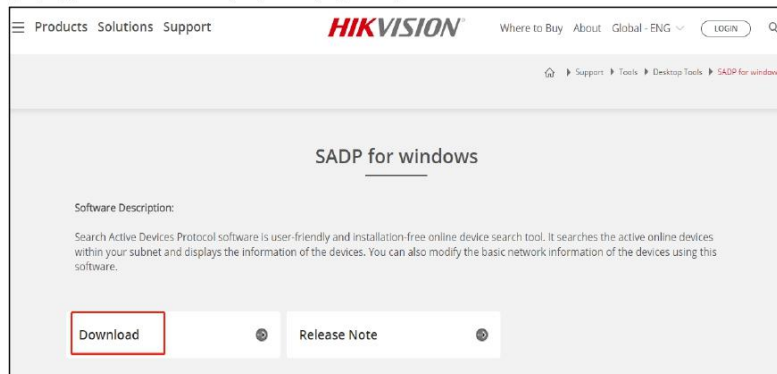
1. Device Search Tool	2
1-1. AjDevTools	2
1-2. SADP Tool	2
2. IE Management	3
2-1. Connect the Camera to Your Network	3
2-2. Check the Camera's IP with SADP Tool or AjDevTool	3
2-3. View Your Computer IP	5
2-4. Modify the IP Address	6
2-5. Login the IE Page	8
3. Connect the camera to the Hikvision NVR	9
3-1. Modify the Camera's IP	9
3-2. Connect the camera to the POE port of Hikvision NVR	9
3-3. Add the Camera	9
3-4. Add successfully and Live View	10
4. Connect the camera to the Dahua NVR	11
4-1. Modify the Camera's IP	11
4-2. Connect the camera to the POE port of Dahua NVR	11
4-3. Add the Camera	11
4-4. Add successfully and Live View	12
5. Danale app for iOS or Android	13
6. FAQ	13
7. About VIKVIZ and Tech Support	14

1. Device Search Tool

1-1. Computer download and install vikviz "AjDevTools" software tool,
(<http://www.vikviz.com/NewsDetail/2520633.html>)



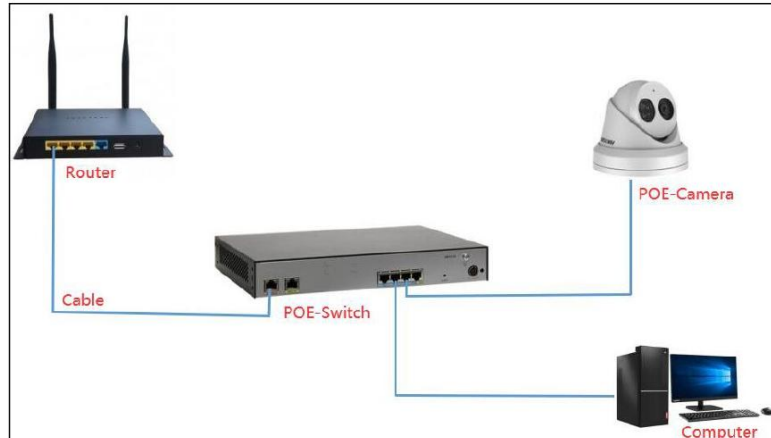
1-2. Or you can use Hikvision "SADP" tool
(<https://www.hikvision.com/en/search/?q=SADP>)



2. IE Management

2-1.Connect the Camera to Your Network.

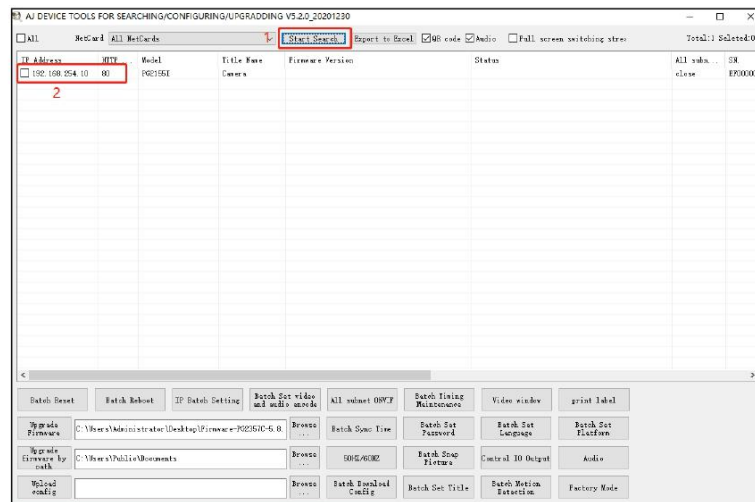
Please keep the computer and camera on the same LAN--Please use a network cable to connect, do not use Wi-Fi.

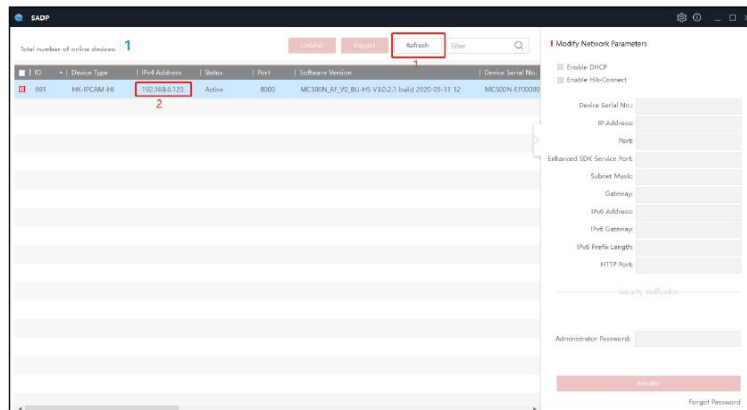


2-2.Check the Camera's IP with SADP Tool or AjDevTool

After installation, opening the software and click the Start Search

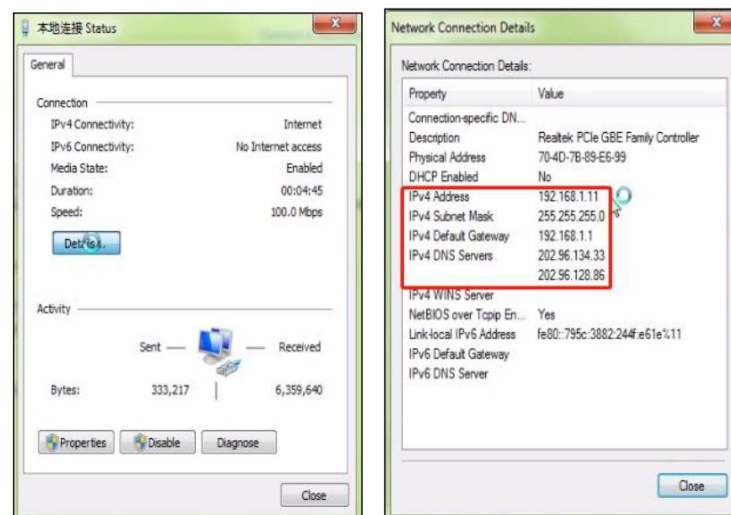
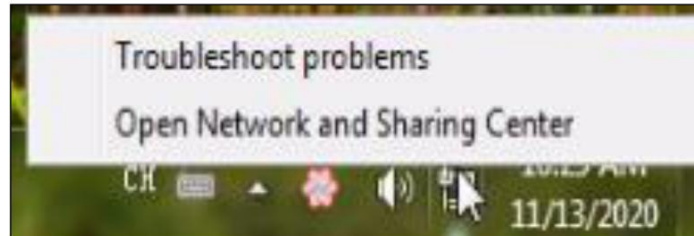
- ① Search for the IP address of the camera;
- ② Query the IP address of the camera.





2-3. View Your Computer IP

- ① Query your computer IP address
- ② Open Network and Sharing Center
- ③ Details
- ④ View your computer's IPV4 Address, Subnet Mask and Gateway

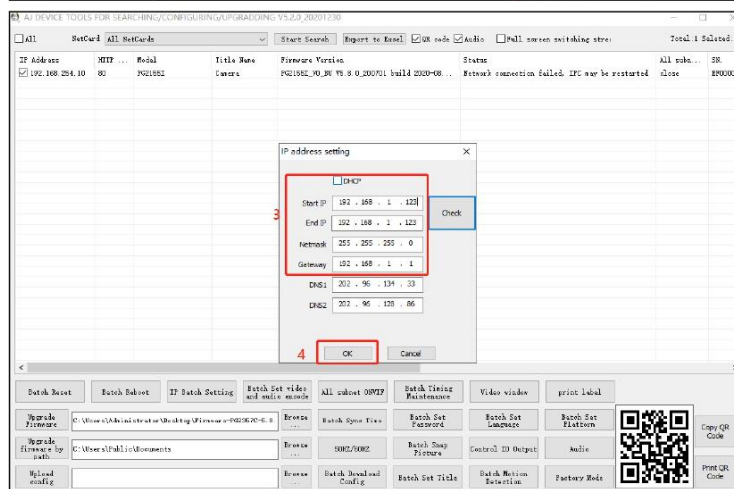
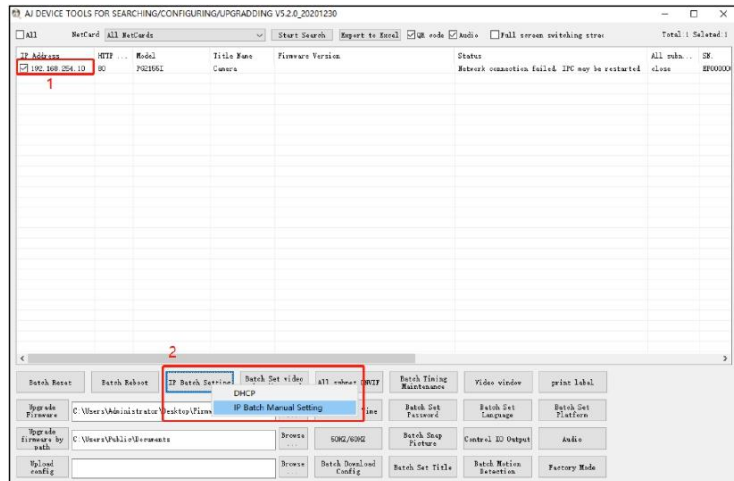


2-4. Modify the IP Address

Modify the IP address of the camera and computer in the same network segment.

AjDevTool Setting Method ↓

- ① Select the IP address of the camera;
- ② Click IP Batch Manual Setting IP address;
- ③ Modify the IP address of the camera to be in the same network segment as the IP address of the computer or choose DHCP to obtain an IP address automatically;
- ④ Select OK--Successfully modified.



SADP Tool Setting Method ↓

- Setting method:
- ① Select the IP address of the camera
 - ② Modify the IP address and gateway of the camera
 - ③ Enter the camera password: 123456
 - ④ Select Modify--Parameters modification completed

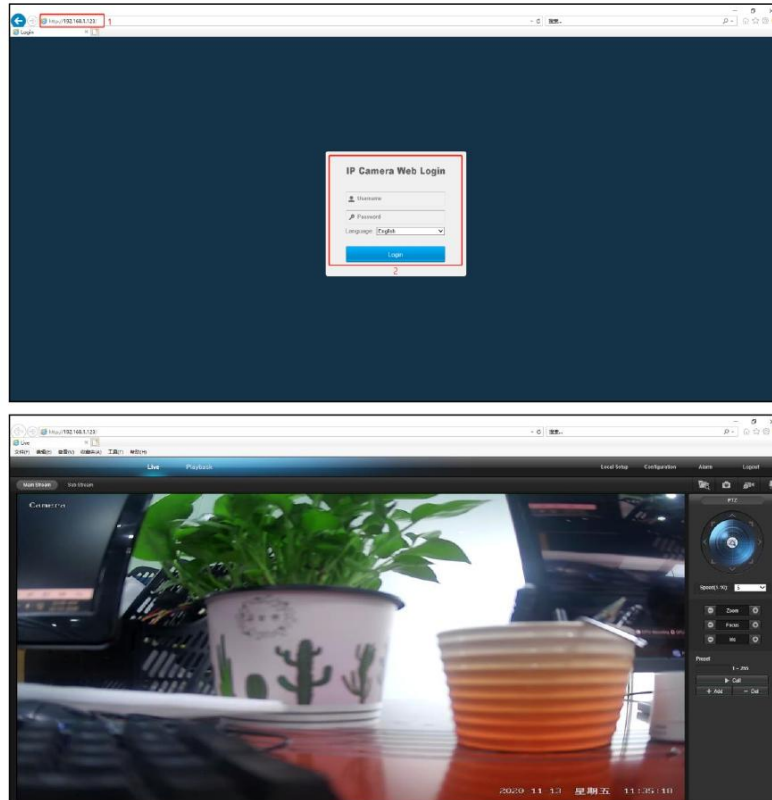
The first screenshot shows the SADP tool interface with a table of online devices. The first device is selected, and its IP address (192.168.1.123) is highlighted with a red box and labeled ①. The right panel shows the 'Modify Network Parameters' section with fields for IP Address, Port, Subnet Mask, and Gateway, all of which are highlighted with a red box and labeled ②. Below these fields is a 'Security Verification' section with an 'Administrator Password' field (labeled ③) and a 'Modify' button (labeled ④).

The second screenshot shows the same interface after the parameters have been modified. The IP address field in the 'Modify Network Parameters' section is now empty, and the 'Modify' button is disabled (grayed out).

ID	Device Type	IP Address	Status	Port	Software Version	Device Serial No.
001	HK-IPCAM-H	192.168.1.123	Active	8000	MC500N_AT_VO_BU-H5 V3.0.2.1 build 2020-05-11 12	MC500N-ET0000

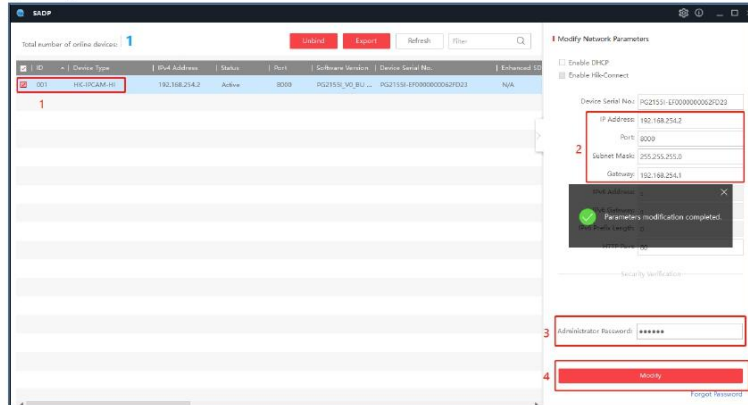
2-5 . Login the IE Page

Double click the camera IP address or Enter the camera IP address, (ex.192.168.1.110) in the browser URL bar to visit the web page login interface.
Login with the username:admin and password :123456.

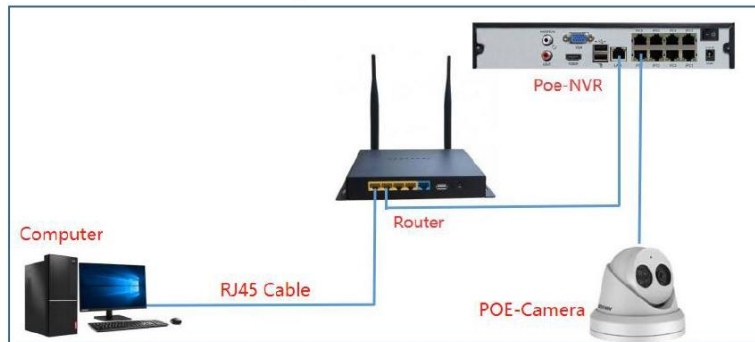


3. Connect the camera to the Hikvision NVR

3-1. Modify the IP address to be an address between 192.168.254.2---192.168.254.254 and the gateway is set to 192.168.254.1

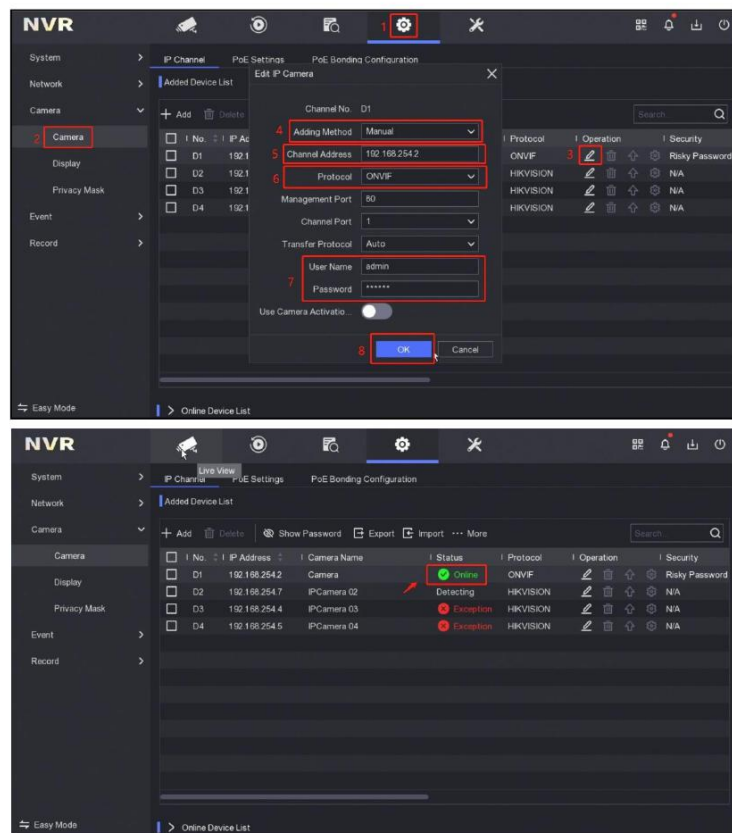


3-2. Connect the camera to the POE port of Hikvision NVR

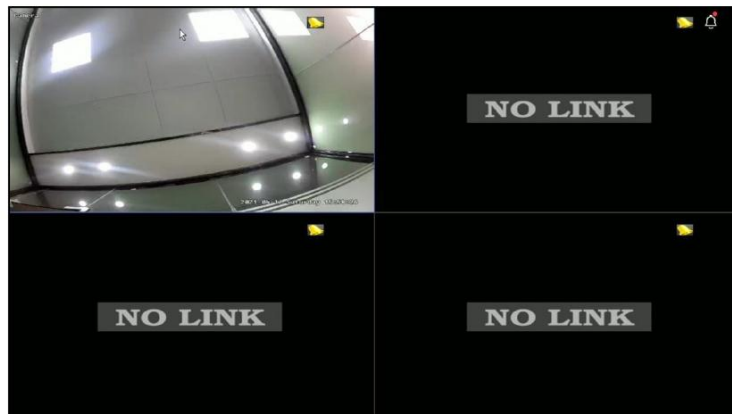


3-3. Right mouse button--Select Menu

- ① Configuration
- ② Camera
- ③ Click Edit
- ④ Choose Manual
- ⑤ Enter 192.168.254.2
- ⑥ Choose ONVIF
- ⑦ Enter IP Camera Password
- ⑧ Click OK

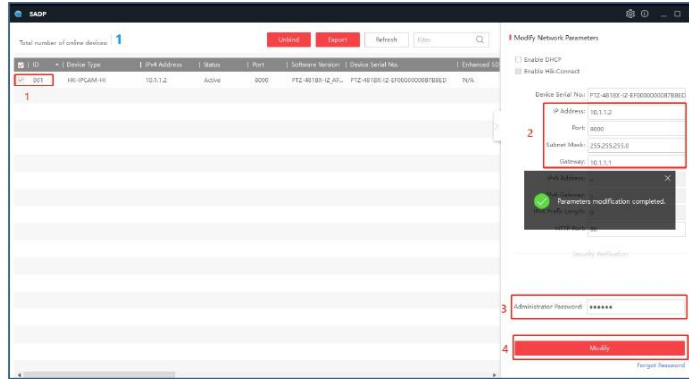


3-4. Added complete --Status Online connection is successful--Live View;

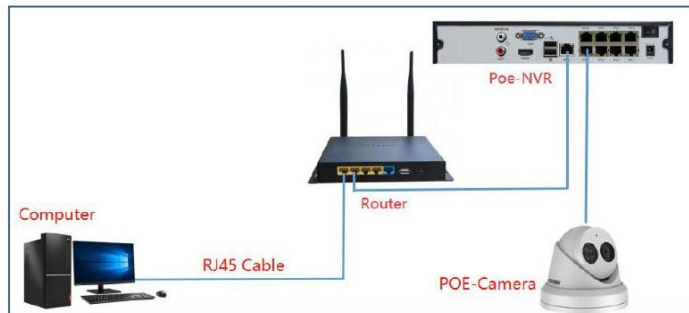


4. Connect the camera to the Dahua NVR

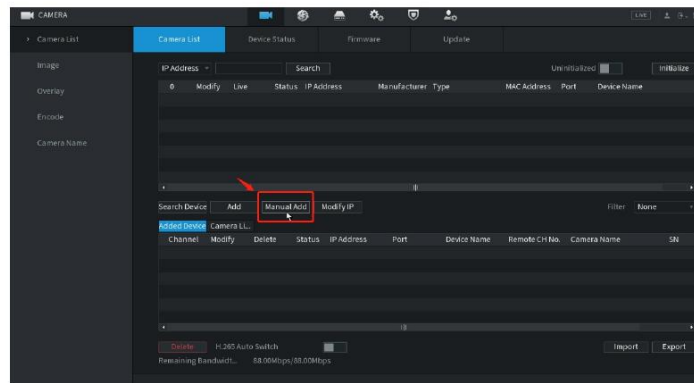
4-1. Modify the IP address to be an address between 10.1.1.2--10.1.1.254 and the gateway is set to 10.1.1.1



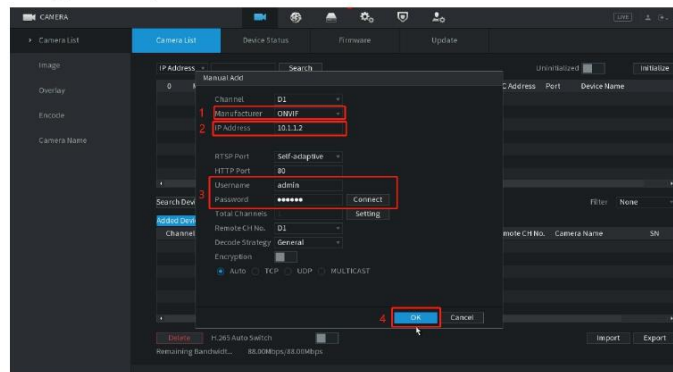
4-2. Connect the camera to the POE port of Dahua NVR



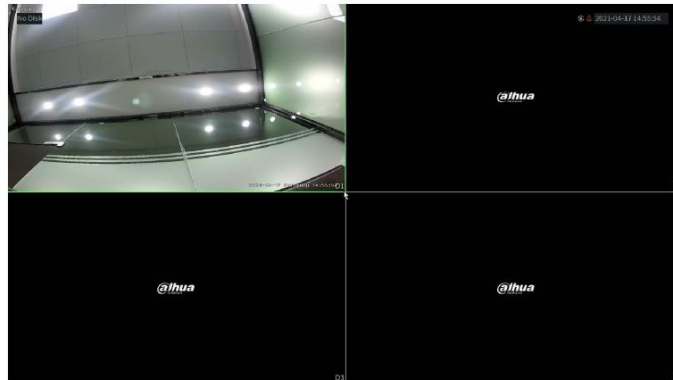
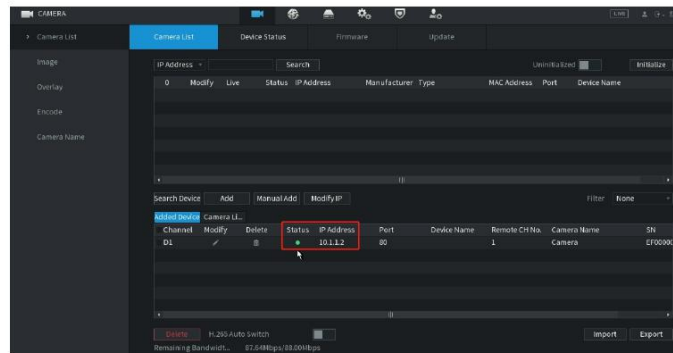
4-3. Log in to the GUI interface of the NVR--Click CAMER--Camera list--Click Manual Add



- 4-4. ①Manufacturer (Choose Onvif)
 ②IP Address (Camera IP: 10.1.1.2)
 ③ Password : 123456
 ④ OK--Complete the camera addition

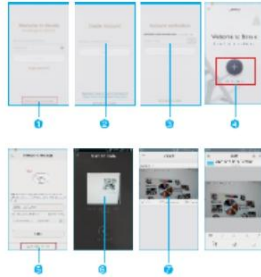


4-5. The display status is green, indicating that the addition is successful



5. Danale app for iOS or Android

Visit the Apple App Store or the Google Play Store to download the Danale app for iOS or Android devices.



For new users, please tap CREATE NEW ACCOUNT to register an account.

5-1.Type in your mobile phone number or email address, then tap NEXT .

5-2.Check your SMS or Email for the verification code, then tap NEXT .


5-3.Tap to Add devices

5.Tap QR Code to add to get into the scan camera QR code page, or click NEXT to discover the connected local LAN IP camera.

5-4.Put the IP camera QR code in the app effective scan area, and then give a nickname for the recognized camera.

5-5.Tap the camera list to start live video.

Tips:

a.Tap  to check your account profile and configure settings

b.To share your camera with your friends or another user, click “ ” icon and type in or scan his/her Danale account.

Note: if you cannot connect the camera, please check your Internet connection and verify the IP address, gateway, and DNS setting in the camera. The Cloud login status should be online, which means the camera has registered to the cloud server. You may also want to connect your phone to WiFi for better performance.

6. FQA

6-1.Why can't I open the default IP address 192.168.1.110 via web browser?

Check your computer's IP address before accessing the camera. If the IP address does not match the 192.168.1.x scheme.

Make sure the IP address of the camera matches the LAN IP scheme. For example, if the LAN is 192.168.1.xxx, then set the IP camera to 192.168.1.110 and so on. Only IE and Firefox ESR windows computer are supported by the camera.

6-2.How to reset the password?

The default Username: admin, Password: 123456. If you lost the password or would to reset the camera's setting, please install the search tool to search the camera IP and click Reset factory button.

6-3.How to upgrade the IP camera?

- a. Ask the supplier for the suitable firmware
- b. you can use the web browser, search tool, or PC client to upgrade the camera
- c.go to the Configuration > System > update, click browse and select the firmware, then click Upgrade button and wait for the operation to complete.

6-4.How to fetch the RTSP video stream and http snapshot?

- a. Main Stream: rtsp://IP:554/h264?username=admin&password=123456
- b. Sub Stream: rtsp://IP:554/h264cif?username=admin&password=123456
- c. low resolution snapshot: http://IP/cgi-bin/snapshot.cgi?stream=1
- d. HD snapshot : http://IP/cgi-bin/snapshot.cgi?stream=0

6-5.Why does the NVR not show image after adding your IP camera?

- a. Make sure you selected the right protocol and enter the correct username and password when adding the cameras,
- b. Make sure the NVR and IP camera are the same IP scheme.(eg. NVR:192.168.1.x, and IP camera:192.168.1.y),
- c. try changing the camera encode mode to H.264 if the NVR can't support H.265. (Configuration -> Camera -> Video > Encode mode: H.264)

6-6.How to make the NVR record in motion detection mode?

- a. Enable the IP camera motion detection function via web browser or Search configure tool,
- b. add the IP camera via ONVIF protocol,
- c. change the NVR record mode to Motion Detection mode,
- d. check the NVR screen MD icon and try playback. Please refer to your NVR manual for NVR motion record option.

7. After-sale Support

If you need tech support, please contact us to after-sale@vikviz.com. Also you can download the user manual from the **item description page on Amazon**.

More details for further setting, you can visit our site (<https://www.vikviz.com>)

Youtube (https://www.youtube.com/channel/UC-Dm5QknD1_DDfLLDw0APlw)

Facebook (<https://www.facebook.com/Vikviz-Store-109417197949500>)