

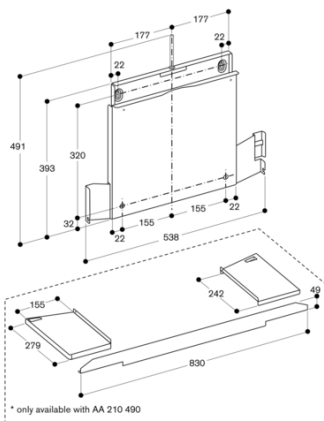
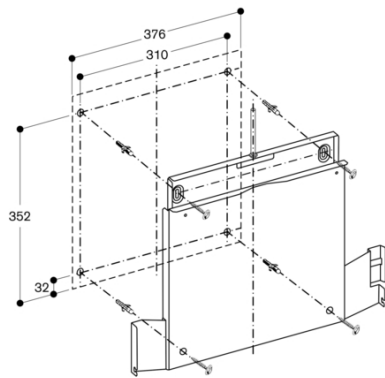
Color Variants
AA210460

AA210460
Lowering frame for 60 cm flat kitchen hood

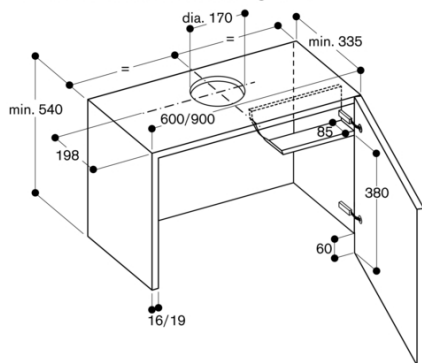
Can be combined with flat kitchen hood series 200.
The patented lowering frame allows the flat kitchen hood to disappear completely into the upper cabinet.
For assembly directly on the kitchen wall or reinforced upper cabinet.
The required cavity depth of the upper cabinet together with the lowering frame measures 335 mm.
For assembly in the upper cabinet.
In combination with a back wall panel >5 mm the lowering frame needs to be lined and the cavity depths must be adapted accordingly.
For the installation of the lowering frame a flexible hose is needed.

Characteristics
Dimensions (HxWxD)
Dimensions of the packed product (HxWxD)
90 x 530 x 630
Dimensions of the master case (mm)
Pallet dimensions
140.0 x 80.0 x 120.0
Quantity per packing unit
Standard number of units per pallet
30
Units per layer
Net weight
2.8
Gross weight
5.0
EAN code
4242006256654
Maximum Power
Voltage
Frequency
Length electrical supply cord
Plug type

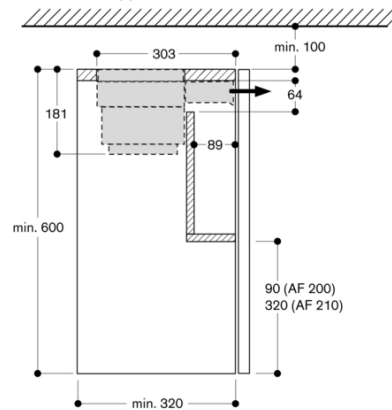
Consumption and connection features
2023-01-19
Page 1



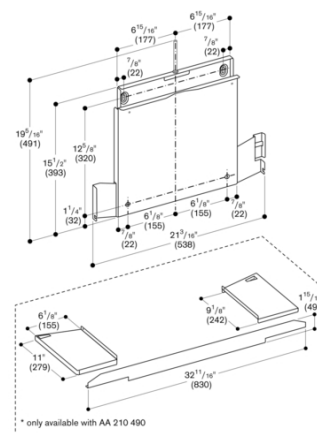
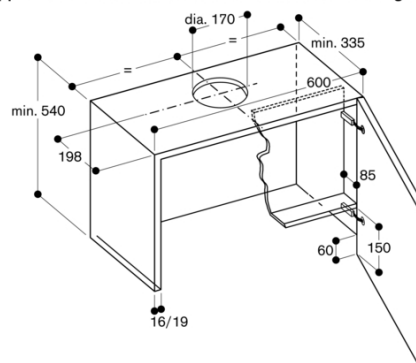
Upper cabinet for AF 210
with AA 210 460/AA 210 490 lowering frame

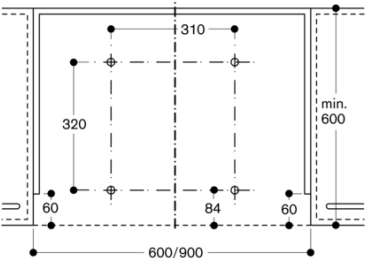
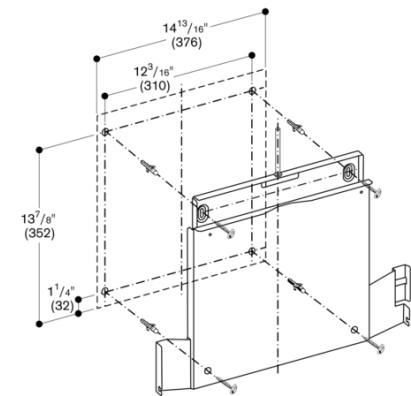


Cross-section of upper cabinet with AA 211 812

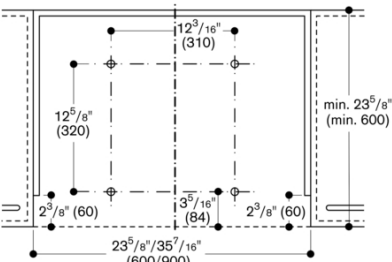


Upper cabinet for AF 200 160 with AA 210 460 lowering frame





Fitting directly to the kitchen wall



Fitting directly to the kitchen wall