

LIFETAIL

SMART WATER DISPENSER

USER MANUAL



Contents

Warning-----	1
User safety guide-----	1
Key Features-----	2
Listing of accessories-----	3
Product Overview-----	4-5
Before assembly-----	7
Product installation-----	8
Product Usage-----	9
LED description -----	10
Battery LED Description-----	10
Conservation and cleaning-----	12
FAQ -----	13-14
Product Parameters-----	14
LIFETAIL after-sales service card-----	6、11

(Please cut out the card and use it)

Warning

- Thank you for purchasing the petsuper smart water dispenser. The petsuper allows technology to change the way pets are raised, making pet raising easier and happier.
- The power adapter of this product must use a socket that meets the national standard and be grounded reliably. Do not cut off or remove the power adapter under any circumstances.
- Please read this product manual carefully before use. Once installed or used, it means that the following safety instructions have been carefully read and accepted.
- The company is not responsible or liable for any accidents and losses caused by illegal operations.
- The right to interpret and modify this statement belongs to the company.

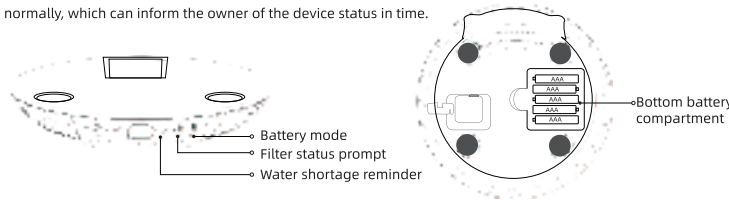
Troubleshooting Guide

- * Failure to comply with the following terms may result in the product not being used normally, or other accidental losses.
- Please install and use the equipment strictly according to the instructions.
- It is not recommended to use this device for pets within three months.
- Please use it in an indoor environment.
- If children are using this device, please ensure that it is used with an adult.
- The device is in low voltage mode, but pets biting the wire will still cause leakage, please use it correctly.
- Please use the original power adapter and original host base, otherwise it will damage the equipment or cause safety hazards.
- Keep it horizontal, do not overturn the device, otherwise it will cause the device to not work properly or spill water.
- The bottom of the main unit and the base of the main unit of this product are prohibited from being immersed in water.
- In addition to maintenance personnel, other people are not allowed to repair this product, so as to avoid various accidental injuries.
- Before the long holiday, be sure to check or update the battery status in the battery box (this product is only suitable for alkaline AAA batteries).
- If you have any problems with the product, please contact customer service in time 400-106-2818.

Key Features

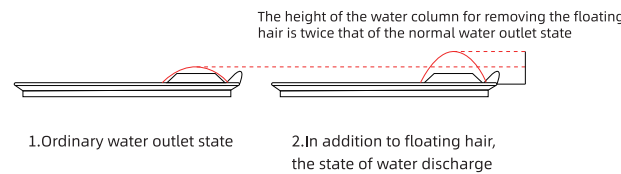
Dual power system

- Adhering to the concept of raising pets with science and technology, the smart water dispenser is equipped with an emergency power supply system. Only five AAA batteries can supply water continuously in the event of a power outage, escorting the life and safety of pets.
- See the description of the battery mode indicator for the operating status of the device in the emergency power supply state. At the same time, the host buzzer, water shortage indicator, filter status indicator and battery indicator operate normally, which can inform the owner of the device status in time.



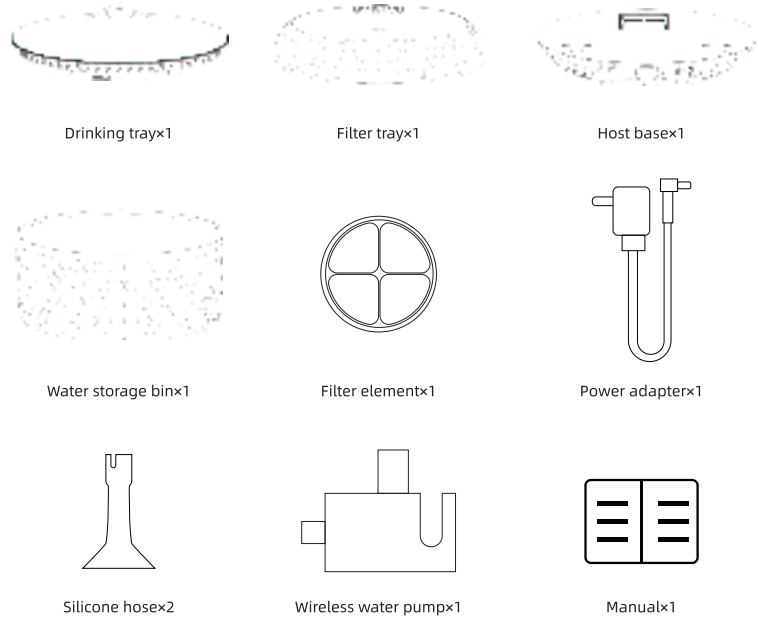
Smart fountain removes floating hair

- In order to make pets drink more healthy water, the function of removing floating hair from the smart spring has been added.
- Every four hours, a high-power spring will push the floating hair on the water surface to the filter element (does not operate when the battery is low).
- Not only can it quickly and powerfully clean the impurities on the surface of drinking water, it is more conducive to the health of pets drinking water, and reduces the situation of pets swallowing too much hair.
- The height of the spring will be reduced at low water level.

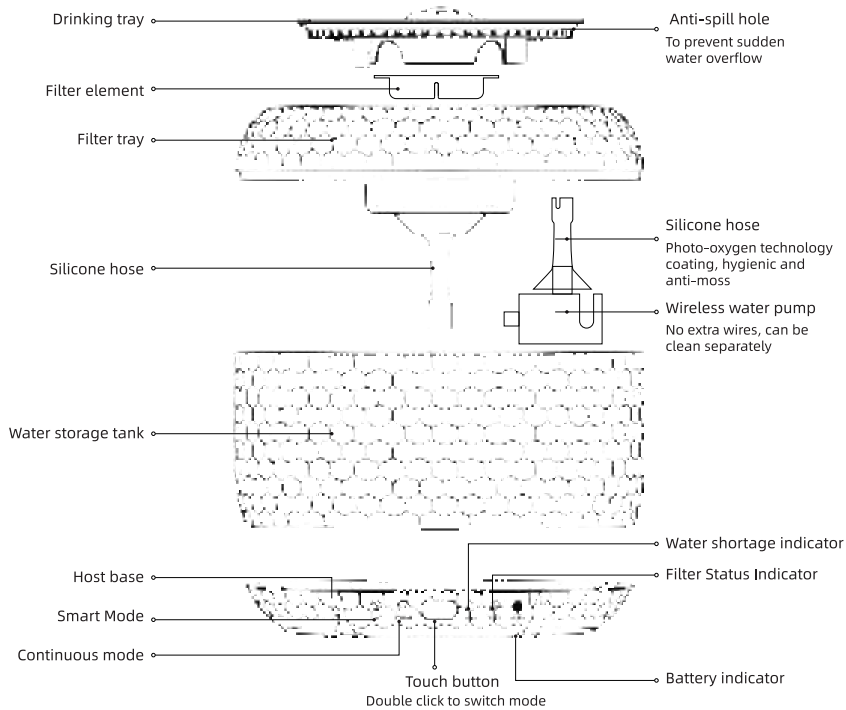


Listing Of Accessories

*Please confirm before installation and use. (This product is not equipped with battery and screwdriver, you need to buy it by yourself)

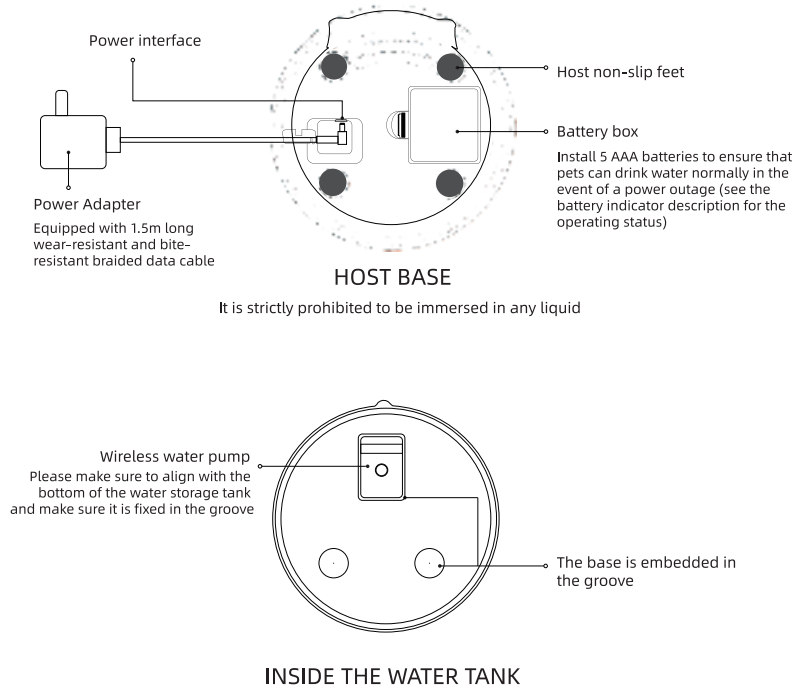


Product Overview



*Note: In order to provide better products, we will regularly carry out product improvement. When the product picture is slightly different from the actual product, please refer to the actual product.

Product Overview



LIFETAIL After-Sales Service Card

Warranty Regulations

- During the warranty period, product performance failures caused by non-human damage can enjoy the following three guarantees:
- Within 7 days from the date of purchase, if there is a quality problem with the petsuper product, consumers can choose to refund and return the product at one time according to the invoice price or replace the product of the same model and specification;
 - Within 15 days from the date of purchase, if there is a quality problem in the product, consumers can choose to replace the product of the same model and specification;
 - The three-guarantee period of this product is one year;
- This certificate shall not be altered, otherwise it will be regarded as an invalid certificate; This certificate can only be valid after the seal of the sales unit.

Non-Warranty Regulations

- The following situations (but not limited to the following situations) are not included in the scope of "Three Guarantees":
- 1. There is no "Three Guarantees" certificate or valid invoice is missing or the validity period of the "Three Guarantees" service has expired;
 - 2. Damage caused by the use, maintenance and storage not in accordance with the requirements of the user manual;
 - 3. Damage caused by force majeure such as fire, lightning strike, flood, etc.;
 - 4. The product model or serial number on the warranty card does not match the actual product;
 - 5. Damage caused by dismantling and repairing are not petsuper authorized service providers;
 - 6. Normal fading, wear and tear during use of the product is not a malfunction covered by the warranty.

Use after cropping along the dashed line



Before Assembly

1 Remove the device

Unpack it and then remove the console and then remove all accessories.
(See accessories list for details)

2 Immersion filter element

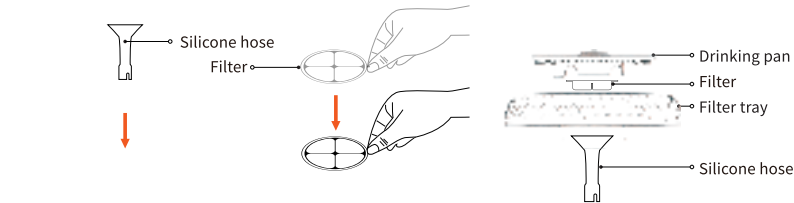
Before installing the filter element, please immerse the filter element in water and clean it thoroughly.
(It is recommended to soak twice for 5 minutes and rinse slightly)

3 Rinse the drinking pan and filter tray

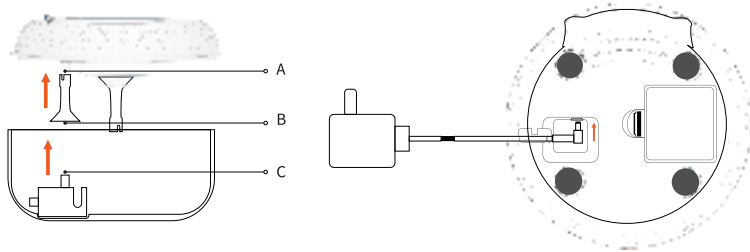
Please wash the tray set (drinking tray and filter tray) with clean water before use, and water storage silos and internal accessories.
(Recommended to wash twice)

Product Installation

4 Install the filter element tray assembly



1. Place the hose in the recess of the filter tray
2. Place the filter element in the recess of the filter element tray
3. Install according to the location of each component



5 Installation of the storage silo components

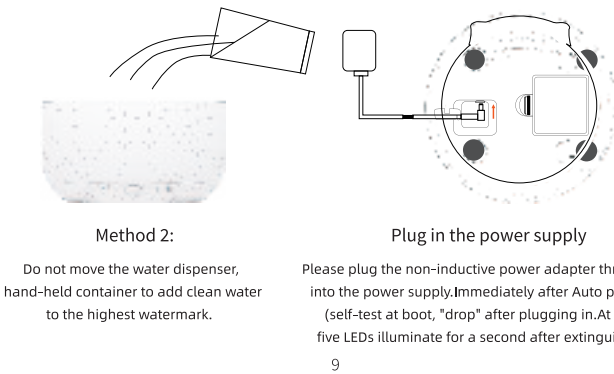
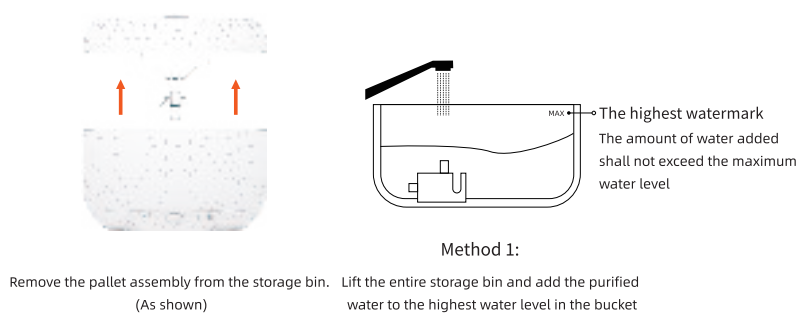
1. Make sure that the pump is aligned with the bottom of the storage bin in the fixed groove.
2. Align the silicone hose at point A of the tray, after confirming the hose alignment,
3. Align the B point of the silicone hose with the C point of the pump to complete the connection.

6 Connect to no inductive power adapter (no power at the moment)

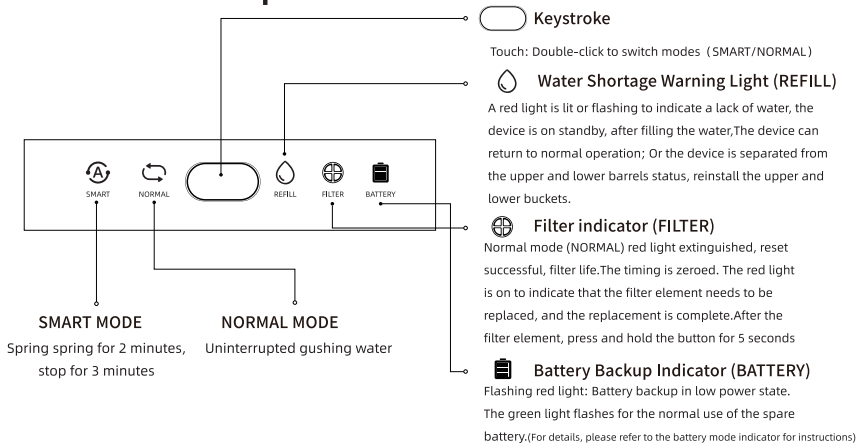
Plug the non-inductive power adapter socket into the base of the console. The power connector of the surface. (Do not turn on the power supply)

Product Usage

I. How to add water



LED Description



Battery LED Description

Spare batteries take the new Nanfu battery as an example, this product is limited to alkaline batteries.

BATTERY LEVEL	LIGHT	THE HEALTH STATUS	WORKING	REMARK
NEW BATTERY	Flashing green light	About 5 seconds per minute, the cycle works	2-3 DAYS	Battery mode can be run
LOW BATTERY	The red light flashes	About every 7 minutes for 5 seconds, the cycle works	4 DAYS	Battery mode can be run

(*The battery can be used for seven days when fully charged)

Maintenance Records

The name of the repair center: _____

Repair center telephone: _____

Sending the repair date: _____

Cause of the obstacle: _____

Send for repair of fault conditions: _____

Refund certificate: _____

Signed by the maintenance personnel: _____

Repair center stamped: _____



Service & Support

400-106-2818

WWW.PETSUPER.COM.CN

Scan the QR code
Download LIFETAIL APP for help



Use after cropping along the dashed line

Conservation And Cleaning

I. Cleaning and maintenance of water storage tanks

1. Please do not place in a place where the sun shines directly, so as not to accelerate the yellowing and aging of the machine.
2. Please disconnect the power supply after the whole machine cleaning work, please ensure that the host base is dry.
3. Please clean the storage tank in a large volume container such as a sink to prevent water from spilling.
4. Please do not use gasoline, kerosene, polishing powder, bleach and other chemical reagents to clean the equipment.
5. Water storage silos, drinking water trays and filter trays should be rinsed with hot water within 80 degrees Celsius if necessary. (Do not soak in hot water)
6. Daily maintenance can be wiped with a soft cloth rinsed with warm water to wipe the surface stains of the cleaning equipment or power cord. (Please remove the power supply first)
7. It is recommended to completely replace the drinking water once in 3-4 days, please empty the water dispenser when replacing, remove the water storage silo and the water dispenser wireless water pump and filter
8. When the machine is not used for a long time, please clean it, dry it, and then put the parts into the box in the original packaging order and place it in a dry place for safe storage.

II. Replacement of the filter element

1. Smart mode (SMART) requires about 60 days to replace the filter element, and normal mode (NORMAL) to replace the filter element about every 30 days. The specific replacement shall be subject to the filter element indicator
2. Please soak the new filter well before replacing the filter (it is recommended to soak twice for five minutes each) and rinse slightly.
3. For the health of the pet, please change the filter according to the use of the filter element.

III. Cleaning of wireless water pumps

1. The wireless water pump needs to be cleaned weekly to prevent dirt from blocking the waterway, resulting in abnormal phenomena such as poor water quality and poor water discharge.
2. Please scan the QR code to view the cleaning steps of the wireless water pump.

Scan the code to watch
the cleaning video

FAQ

I. About power base failures:

1. Host base water: please find the power supply first, hold the level to the ventilation place for 12 hours (please note not to reverse the base, so as not to avoid the motherboard water), after installing the water dispenser, if the equipment still cannot work, please contact customer service to deal with.
2. After replacing the battery, the base of the host has no reaction, please confirm whether the location environment of the base is wet, check whether the battery shrapnel of the base has corrosion and yellowing and other undesirable phenomena. If the above phenomenon exists, please contact customer service.
3. The device emits a "click" sound during use: the physical switching when the device automatically detects the battery voltage is a normal phenomenon.

II. About LED failures:

1. The indicator light is not lit after power-on: please reseat or replace the original non-inductive adapter, if it is still not lit, please contact customer service.
2. After replacing the battery, the battery indicator is still red: please check to make sure that five fully charged batteries have been replaced.
3. Cannot be reset after replacing the new filter element (the filter indicator light does not turn off): Please confirm whether you can switch the Smart/Persistent mode normally when clicking. Or power off reboot reset. If you still can't reset, please contact customer service.
4. In battery mode, the red water deficiency indicator is bright, but the water shortage is still displayed after adding water: Normal phenomenon: the device will only detect the water level and turn off the indicator light when the pump is working, and in order to maximize the battery life, The device transitions to a sleep mode, which pauses the detection of water levels. Plug-in can also be restored, and the LED can be turned off.

III. About filter elements:

1. A little black powder floating in the water is not: the filter element uses non-toxic and harmless coconut shell activated carbon will drift out with the water flow, which is a normal situation, please rest assured to use.
2. The use of the pump makes a clicking sound: due to the circulation of water flow, the coconut shell activated carbon in the floating water may be adsorbed by the pump, please check and clean it in time.

FAQ

VI. About the effluent fault

1. Switch to continuous mode without water: (1) Please confirm whether the water shortage lamp is lit, if the water shortage lamp is still bright when the water in the storage tank is full, it may be poor contact and can be tasted Try separating and relocating the storage bin, or contact customer service. (2) Take down the tray set and confirm whether the pump is working and whether it is blocked, if the pump is working normally, try to replace it. The filter element or tray pack is cleaned and repositioned in alignment with the outlet. (3) The pump does not work, you can clean the pump according to the instructions of the pump cleaning video (see the QR code of the instruction manual, Cleaning the base of the host must be carried out in a power-off state), if the above steps can not solve the problem, please contact customer service.
2. The water outlet becomes smaller: (1) Check whether the water outlet of the filter tray is aligned with the outlet of the bottom pump. (2) The water level may be too low due to the small amount of water in the storage bin, please Add water as appropriate. (3) Please check whether the filter element, silicone hose or wireless water pump is blocked, you can take it apart and clean it and try again, or contact customer service.
3. Water overflow after a period of use: After the filter element is used for too long, the dirty residue on the surface will affect the water leakage effect of the filter element, please replace the filter element in time. Or troubleshoot. If the water pipe and pump are dirty and blocked, you can clean it and try again.
4. Switch to battery mode after the power failure, but the water dispenser does not produce water: It is a normal phenomenon: in battery mode, if it is exactly at the sleep time of the device, the pump will not work for the time being; You can also press the button briefly, and the device immediately comes out of the water and restarts Circulate.

Product Parameters

Product Name	Smart Water Dispenser (Diamond model)
Product model	PW01
Product size	200*200*140mm
Applicable to pets	Cats and small dogs
Product weight	0.82kg
Rated voltage	5VDC
Rated power	2W

FCC Caution:

This device complies with part 15 of the FCC Rules. Operation is subject to the following two conditions: (1) This device may not cause harmful interference, and (2) this device must accept any interference received, including interference that may cause undesired operation.

Any Changes or modifications not expressly approved by the party responsible for compliance could void the user's authority to operate the equipment.

Note: This equipment has been tested and found to comply with the limits for a Class B digital device, pursuant to part 15 of the FCC Rules. These limits are designed to provide reasonable protection against harmful interference in a residential installation. This equipment generates uses and can radiate radio frequency energy and, if not installed and used in accordance with the instructions, may cause harmful interference to radio communications. However, there is no guarantee that interference will not occur in a particular installation. If this equipment does cause harmful interference to radio or television reception, which can be determined by turning the equipment off and on, the user is encouraged to try to correct the interference by one or more of the following measures:

- Reorient or relocate the receiving antenna.
- Increase the separation between the equipment and receiver.
- Connect the equipment into an outlet on a circuit different from that to which the receiver is connected.
- Consult the dealer or an experienced radio/TV technician for help.

This equipment complies with FCC radiation exposure limits set forth for an uncontrolled environment. This equipment should be installed and operated with minimum distance 20cm between the radiator & your body.