

Use & care manual

ELECTRIC HEATING PAD

KH-019F8



Snailax **SNAILAX[®]**

Safety Instructions



IMPORTANT-- PLEASE STORE THESE INSTRUCTIONS FOR FUTURE REFERENCE. READ THE INSTRUCTIONS CAREFULLY BEFORE USING THE UNIT.

SAFETY INFORMATION

- THE APPLIANCE IS ONLY TO BE OPERATED THROUGH ITS CONTROL.
- PLEASE CHECK THE HEATING PAD BEFORE EACH USE. DO NOT USE IF YOU NOTICE WEAR, DAMAGE OR SIGNS OF IMPROPER USE ON THE CONTROL, CABLE OR HEATING PAD.
- BEFORE CONNECTING THE PRODUCT TO A POWER SUPPLY, PLEASE MAKE SURE THAT THE SUPPLY VOLTAGE STATED ON THE RATING PLATE IS WITHIN THE ALLOWED POWER RANGE.
- DO NOT FOLD OR CREASE THE HEATING PAD DURING USE.
- DO NOT PIERCE THE PAD WITH OR ATTACH SAFETY PINS OR OTHER SPIKY, OR SHARP OBJECTS TO THE PAD.
- DO NOT USE THE HEATING PAD ON CHILDREN OR PERSONS WHO ARE DISABLED, ASLEEP OR INSENSITIVE TO HEAT.
- THE UNIT IS DESIGNED FOR HOME USE ONLY.
- DO NOT KEEP THE HEATING PAD SWITCHED ON AFTER YOU FALL ASLEEP.
- PROLONGED USE OF THE HEATING PAD AT A HIGH SETTING COULD LEAD TO SKIN BURNS.
- DO NOT COVER THE HEATING PAD WITH ANY OTHER CUSHIONS. THE CONTROL SHOULD NOT BE COVERED OR PLACED ON OR BELOW THE HEATING PAD WHILE IT IS IN OPERATION.
- DO NOT SIT ON THE HEATING PAD, ONLY PLACE THE PAD ON THE PART OF YOUR BODY YOU WANT TO TREAT.
- NEVER TOUCH A HEATING PAD THAT HAS FALLEN INTO WATER, UNPLUG THE UNIT FROM POWER IMMEDIATELY.
- KEEP THE POWER CORD AWAY FROM HOT SURFACES.
- NEVER CARRY, PULL OR TURN THE HEATING PAD BY THE CORD AND DO NOT LET THE CORD GET TANGLED.
- DO NOT USE THE HEATING PAD WHEN IT IS WET AND ONLY USE IT IN DRY ENVIRONMENTS (NOT IN THE BATHROOM OR SIMILAR ENVIRONMENTS).
- DO NOT EXPOSE THE CONTROL AND CABLE TO MOISTURE OR HUMID.
- IF A FAULT OCCURS, DO NOT ATTEMPT TO REPAIR THE UNIT BY YOURSELF. REPAIRS MUST ONLY BE CARRIED OUT BY AN AUTHORIZED TECHNICIAN OR OTHER SUITABLY QUALIFIED PERSONNEL.
- IF THE CABLE IS DAMAGED, IT MUST BE REPLACED BY ITS MANUFACTURER, ITS SERVICE AGENT OR SIMILARLY QUALIFIED PERSONS IN ORDER TO AVOID A HAZARD.

WARNING:

- CONSULT YOUR DOCTOR BEFORE USING THE HEATING PAD IN CASE YOU HAVE ANY HEALTH CONCERNS.
- DO NOT USE THE HEATING PAD ON PARTS OF THE BODY THAT ARE SWOLLEN, INJURED OR INFLAMED
- IF YOU EXPERIENCE PERSISTENT PAINS, IT CAN BE SYMPTOMS OF SERIOUS ILLNESS STOP USING IMMEDIATELY AND CONSULT YOUR DOCTOR.
- IF YOU EXPERIENCE ANY PAIN OR DISCOMFORT WHILE USING THE UNIT, STOP USING IT IMMEDIATELY
- DO NOT USE THIS PRODUCT FOR MEDICAL TREATMENT.

Safety Instructions

INSTRUCTIONS BEFORE USING

PLEASE CHECK IF THE UNIT AND ITS PARTS ARE INTACT AND UNDAMAGED. IN ANY WAY, IF THERE IS ANY ISSUE, PLEASE CONTACT THE SELLER.



WARNING:

**PLEASE ENSURE THAT POLYBAG IS KEPT AWAY FROM CHILDREN!
RISK OF SUFFOCATION!**



IMPORTANT SAFETY INSTRUCTIONS, DO NOT DESTROY

DANGER-- To reduce the risk of burns, electric shock and fire, this product must be used in accordance with the following instructions.

1. READ ALL INSTRUCTIONS
2. DO NOT USE WHILE SLEEPING.
3. NEVER LEAVE THIS APPLIANCE UNATTENDED, ESPECIALLY IF CHILDREN ARE PRESENT.
4. DO NOT USE ON AN INFANT.
5. DO NOT USE ON AN ANIMAL.
6. THIS PAD IS NOT TO BE USED ON OR BY AN INVALID, SLEEPING OR UNCONSCIOUS PERSON, OR A PERSON WITH POOR BLOOD CIRCULATION UNLESS CAREFULLY ATTENDED.
7. DO NOT USE ON AREAS OF INSENSITIVE SKIN.
8. BURNS CAN OCCUR REGARDLESS OF CONTROL SETTING, CHECK SKIN UNDER PAD FREQUENTLY.
9. DO NOT USE PINS OR OTHER METALLIC MEANS TO FASTEN THIS PAD IN PLACE.
10. DO NOT SIT ON OR CRUSH PAD – AVOID SHARP FOLDS.
11. POSITION PAD ON TOP OF, AND NOT UNDERNEATH THE BODY. HEAT LEVEL MAY INCREASE WHEN HEAT IS TRAPPED.
12. NEVER USE PAD WITH LINIMENTS, OINTMENTS OR SALVES, ESPECIALLY THOSE CONTAINING HEAT-PRODUCING INGREDIENTS, AS SKIN BURNS COULD RESULT.
13. NEVER PULL THIS PAD BY THE SUPPLY CORD.
14. DO NOT USE THE CORD AS A HANDLE
15. LOOP CORD LOOSELY WHEN STORING. TIGHT WRAPPING MAY DAMAGE CORD AND INTERNAL PARTS
15. NEVER UNPLUG PAD FROM ELECTRICAL OUTLET WITH A WET HAND.
16. USE THIS PAD ONLY ON A 120 VOLT AC ELECTRICAL OUTLET. UNPLUG WHEN NOT IN USE.

Failure to observe the above instructions may constitute misuse of the product and can cause serious injury or burns.

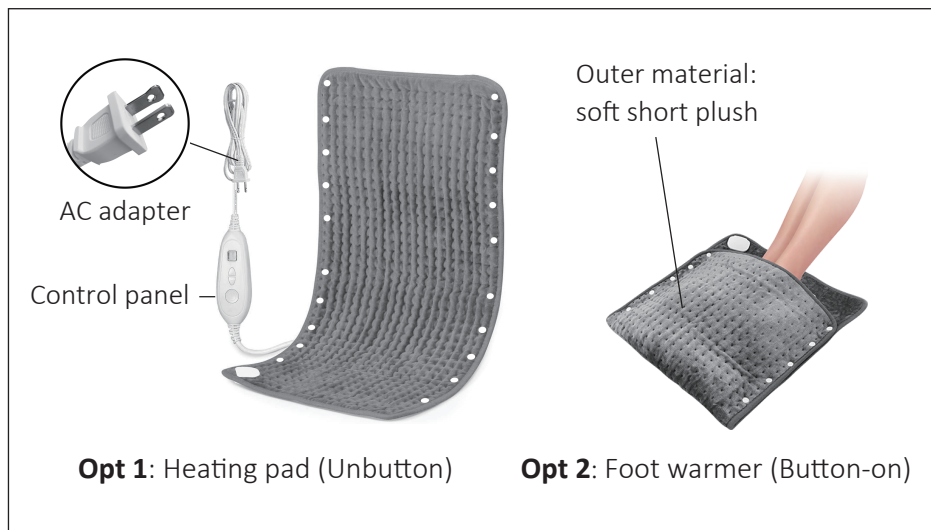
Instruction

Thank you for purchasing Electric Heating Pad from SNAILAX.
With normal care and proper treatment, it will provide years of reliable service.

Please read all instructions carefully before use this product.

Please retain this manual for future reference.

FEATURES



CONTENTS

- 1x Electric Heating Pad
- 1x User manual

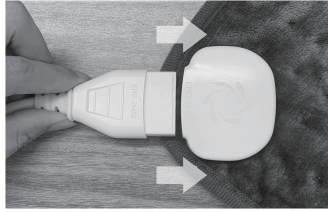
TECHNICAL DATA

Item No.:	KH-019F8
Measurements:	17 x 33 inches (Unbutton)
Weight:	1.0lbs
Input:	Input: AC120V/60Hz
Rated Power:	100W
Automatic runtime:	2Hours



Setup and Operation

1. Connect the power cable to the corresponding port on the heating pad.



2. Plug in an electric outlet(120V/60Hz).

3. Turn on the device by operating controller(refer to controller instructions.).

4. When finished unplug the power cable from the outlet.

- The device will automatically switch off after 2-hour timer runs out.
- Do not setup or use the device in a bathroom or similary wet/damp areas.
- Ensure the device is not exposed to direct sunlight or placed near sources of heat.

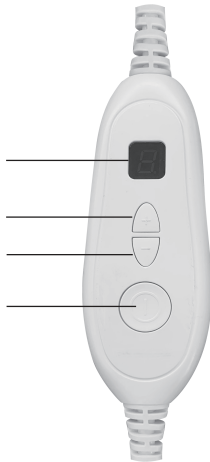
Controller instructions

**Digital Display
Screen**

Temperature +

Temperature -

Power Button



1. Plug into an electric outlet,
The digital screen will show 8 , and
after 1 second, 8 will disappear and
the heating pad is on standby mode.

2. Press the Power button to turn on
the heating pad.

Press the Temperature + /- Button to
select the heat between 1-6 levels.
(Default setting is level 3.)

Note:

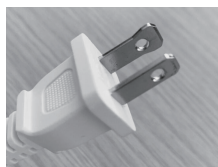
This product produces a warming heat. It is not intended to be used as a therapeutic heating pad. Please allow a few minutes to reach maximum temperature.
The maximum temperature: approx 140F.

Care and Cleaning Instructions

1. Before cleaning the pad, unplug it from the power outlet, unplug the cable from heating pad and let it cool down for at least ten minutes.
2. DO NOT immerse the power cable with controller in water.
3. The heating pad can be washed in a normal wash at Max 104F.
4. DO NOT wipe the product with alcohol or harsh chemicals such as thinner or bleach.
5. DO NOT try the heating pad in a tumble drier.
6. The heating pad can be cleaned with a soft brush when dry.
7. DO NOT dry cleaning.
8. Make sure the product is completely dry before the next use.
9. Store the heating pad in a cool, dry place out of reach of children.
10. Avoid contact with sharp edges or pointed objects which might cut or puncture the fabric surface.

TROUBLESHOOTING GUIDE

Problem	Cause	Solution
The appliance does not warm up	The appliance is not connected to power	Inset the power plug into the power socket and switch on the appliance
	The appliance is not seitched on	Switch on the appliance
	The appliance is defective	Please contact customer service
The letter "P" is shown on the display screen or the display does not light up	The pad part and the controller are not, or not correctly connected	Unplug the power plug properly. plug the heating pad into the controller, re-switch on the controller.
	The appliance is defective	Please contact customer service
The letter "E" is shown on the display screen	The pad controller has overheated protection	Unplug the power plug, sprecd out the pad and let it cool down, then re-switch the controller.
	The pad heating element has damaged due to overheated, the controller has blown the over-tempthermal fuse	The pad is damaged. Need to be scrapped.



Note:

This heating Pad has a polarized plug (one blade is wider than the other) as a safety feature. This plug will fit into a polarized outlet only one way. If the plug does not fit fully into the outlet, reverse the plug. If it still does not fit, contact a qualified electrician.

Warranty

If you have any issue about the product, please feel free to contact us by sending email to support@snailax.com. We will strive to provide the best service possible within 24 hours.

30 days unconditionally return

Snailax product can be returned to receive a full refund for any reason within 30 days. Please contact our customers service (support@snailax.com), our staff will contact you within 24 hours.

90 days return/replace

Snailax product can be returned / replaced within 90 days if the product break down in the period of proper use.

12 months Warranty

If the product breaks down within 12 months in the period of proper use, customers can still seek for the relevant product warranty to get it replaced.

Attention!

No warranty will be given to any force majeure or man-made causes for a defective product, such as improper care, personal tear down and willful damage, etc.

Extend Warranty for Free

- 1) Enter the following URL or scan the QR code below to find Snailax facebook page and like it, enter "Warranty" to messenger to extend your warranty from 1 year to 3 years.



<https://www.facebook.com/snailax>

- OR 2) Send message "Warranty" and email us support@snailax.com to extend your warranty from 1 year to 3 years.

Have question ?



Tel: 734-709-6982
Monday-Friday 9:00AM-4:30PM



Email: support@snailax.com

FCC STATEMENT

NOTE: This equipment has been tested and found to comply with the limits for a Class B digital device, pursuant to Part 15 of the FCC Rules. These limits are designed to provide reasonable protection against harmful interference in a residential installation. This equipment generates, uses and can radiate radio frequency energy and, if not installed and used in accordance with the instructions, may cause harmful interference to radio communications. However, there is no guarantee that interference will not occur in a particular installation. If this equipment does cause harmful interference to radio or television reception, which can be determined by turning the equipment off and on, the user is encouraged to try to correct the interference by one or more of the following measures:

- Reorient or relocate the receiving antenna.
- Increase the separation between the equipment and receiver.
- Connect the equipment into an outlet on a circuit different from that to which the receiver is connected.
- Consult the dealer or an experienced radio / TV technician for help.

This device complies with Part 15 of the FCC Rules. Operation is subject to the following two conditions: (1) this device may not cause harmful interference, and (2) this device must accept any interference received, including interference that may cause undesired operation.

WARNING: Changes or modifications to this unit is not expressly approved by the party responsible for compliance could void the user's authority to operate the equipment.



2750 Carpenter Road,
Suite 1 B, Ann Arbor, 48108
Tel: 734-709-6982
support@snailax.com
www.snailax.com



Manufacturer: Ningbo Kanghong Electrical Appliance CO., LTD

Model: KH-019F8