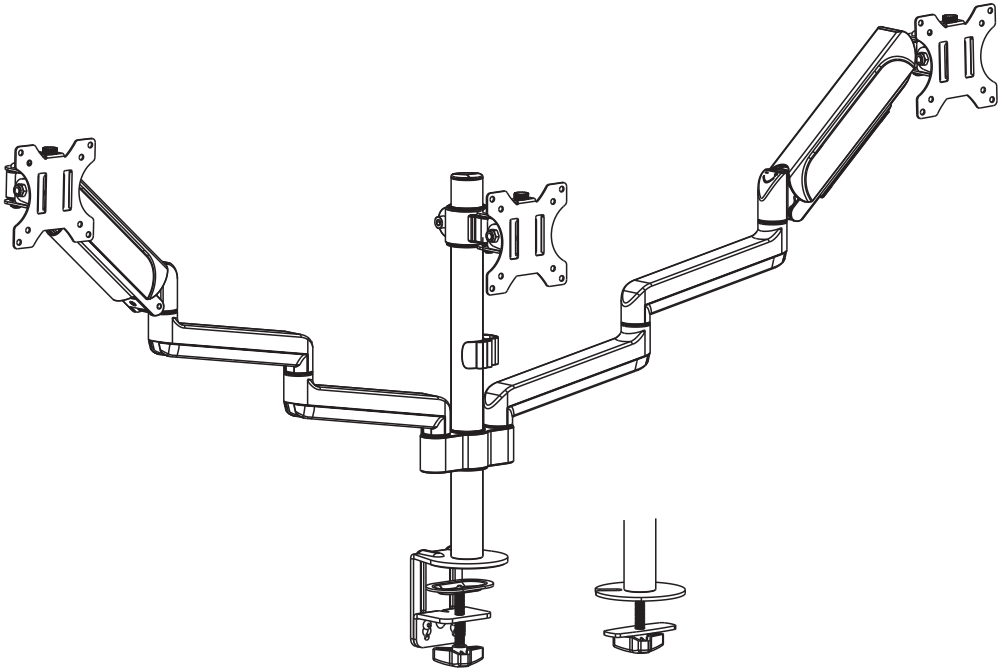




Triple Monitor Desk Mount



GSDM003



75x75/100x100



27"
MAX



(1-7kg)x3
(2.2-15.4lbs)x3
RATED



support@walielectric.com

WARNING!

If you do not understand these directions, or if you have any doubts about the safety of the installation, please call a qualified technician. Check carefully to make sure there are no missing or defective parts. Improper installation may cause damage or serious injury. Do not use this product for any purpose that is not explicitly specified in this manual. Do not exceed weight capacity. We cannot be liable for damage or injury caused by improper mounting, incorrect assembly or inappropriate use.



TIPOVER WARNING

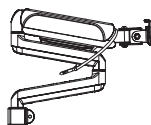
**SERIOUS OR FATAL CRUSHING INJURIES CAN OCCUR FROM TIPOVER.
TO HELP PREVENT TIPOVER:**

- NEVER ALLOW CHILDREN TO CLIMB, STAND, HANG, OR PLAY ON ANY PART OF MONITOR OR STAND.
- USE TIPOVER RESTRAINT OR ANCHOR STAND TO WALL.

USE OF TIPOVER RESTRAINTS MAY ONLY REDUCE, BUT NOT ELIMINATE RISK OF TIP OVER.

SMALL PARTS- NOT FOR CHILDREN UNDER 3 YEARS. ADULT SUPERVISION IS REQUIRED.

Supplied Parts List



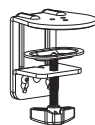
Arm
A (x1)



Monitor Arm
B (x1)



VESA Plate
C (x3)



C-Clamp
D (x1)



Pole
E (x1)



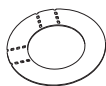
Wire Clip
F (x1)



Grommet Base Plate
G (x1)



Support Plate
H (x1)



Anti-skid Pad
I (x1)



Top Screw
J (x3)



M6X16 Bolt
K (x3)



4mm Allen Key
L (x1)



6mm Allen Key
M (x1)



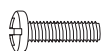
M4X12 Bolt
M-A (x12)



M4X16 Bolt
M-B (x12)



M5x12 Bolt
M-C (x12)



M5x16 Bolt
M-D (x12)



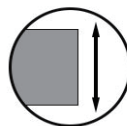
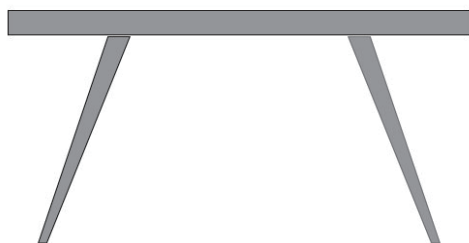
D5 Washer
M-E (x12)



Spacer
M-F (x12)

Step 1

Measure the thickness of your mounting surface or desk

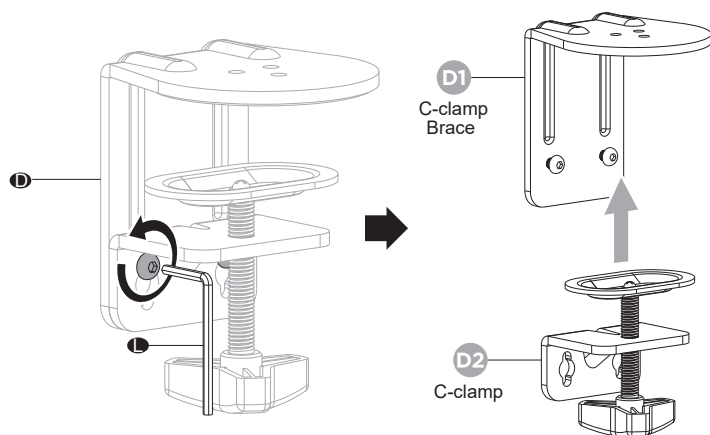


Fit clamp: 0.4"-3.3"
Grommet: 0.4"-1.6"

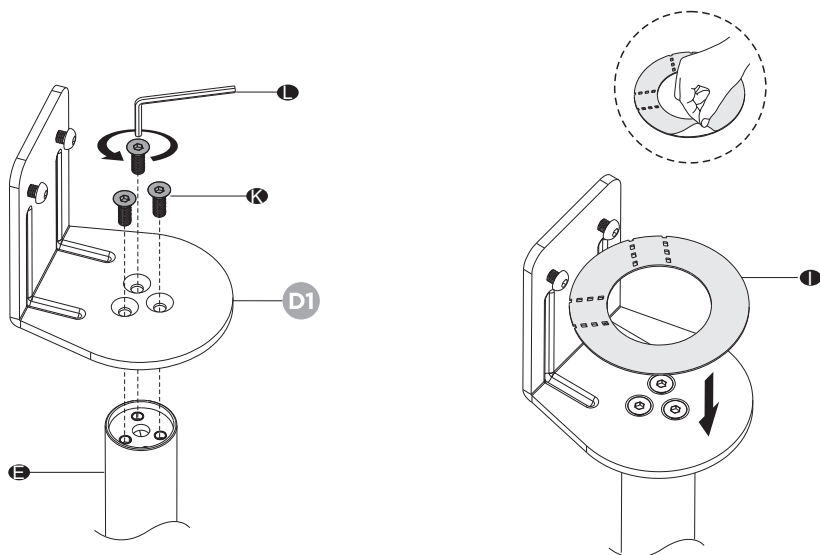
Step 2

Option A Clamp Installation

1. Loosen the bolts on C-clamp **D** using 4mm Allen Key **L**.

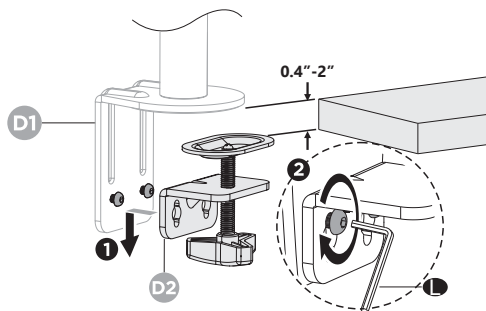


2. Connect Pole **E** and C-clamp Brace **D1** from the bottom using M6x16 Bolt **K** and tighten with 4mm Allen Key **L**. Tear off the protective paper and attach Anti-Skid Pad **I** to the bottom designated position of C-Clamp Brace **D1** as image shown.



3.1 For 0.4"- 2" thick desk

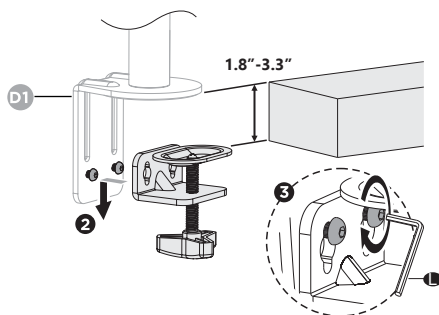
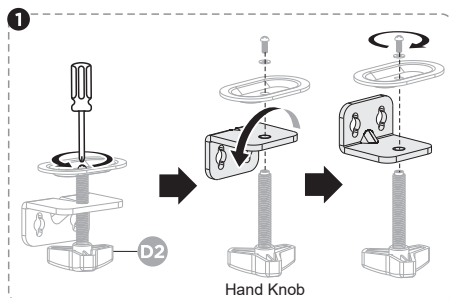
Loosen the Bolts on the C-Clamp Brace **D1** using 4mm Allen Key **L**. Hang the C-Clamp **D2** on the bolts and tighten using 4mm Allen Key **L**.



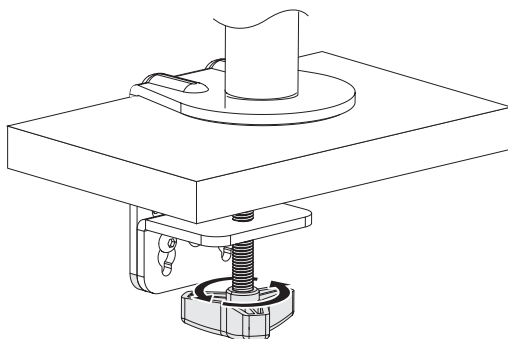
3.2 For 1.8"- 3.3" thick desk

Loosen the screw to release the hand knob using a screwdriver as image shown. Turn over the bracket and tighten the screw.

Loosen the Bolts on the C-Clamp Brace **D1** using 4mm Allen Key **L**. Hang the C-Clamp **D2** on the bolts and tighten using 4mm Allen Key **L**.



4. Rotate the hand knob clockwise to fasten for stability.

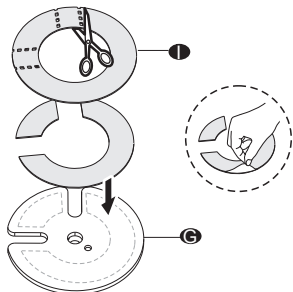


Step 2

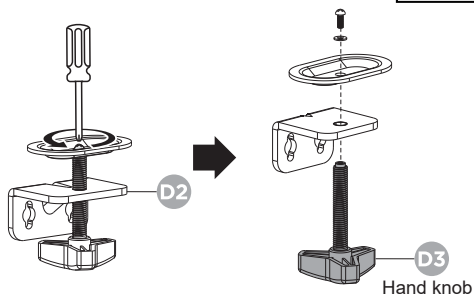
Option B

Grommet Base Installation

1. Cut the Anti-skid Pad **1** along the broken line. Tear off the protective paper and attach Anti-Skid Pad **1** to the bottom designated position of Grommet Base Plate **2** as the image shown.



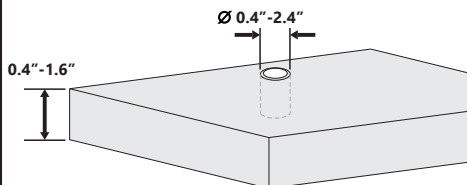
2. Loosen the screw to release the hand knob using a screwdriver as image shown. (Screwdriver not included)



3a.Existing Grommet Hole Installation

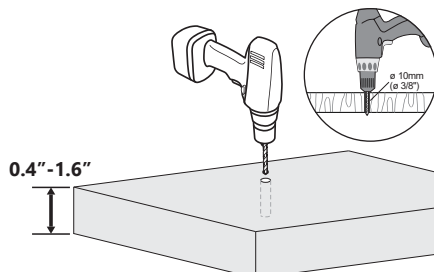
If the existing grommet hole comes with a plastic protector, remove it to ensure a flat surface before installing the desk mount.

Desktop with Existing Through-hole.

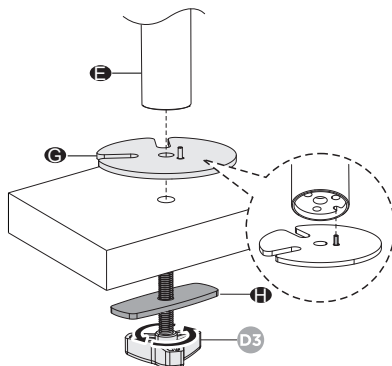


3b.Self-drilled Grommet Hole Installation

Mark the position of the hole on your mounting surface. Drill a 3/8"(10mm) diameter hole at the marked position through the mounting surface.



4. Place the Grommet Base Plate **2** and Pole **3** to the grommet hole. Insert the hand knob through the center hole of Support Plate **1** and desk hole, rotate the hand knob **D3** clockwise to fasten for stability.

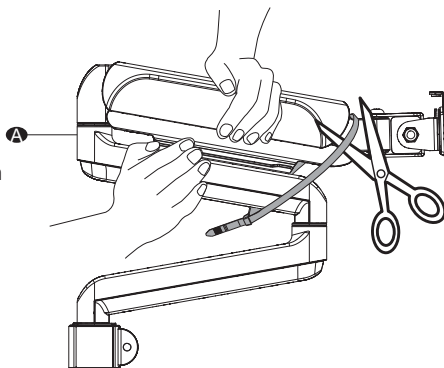


Step 3



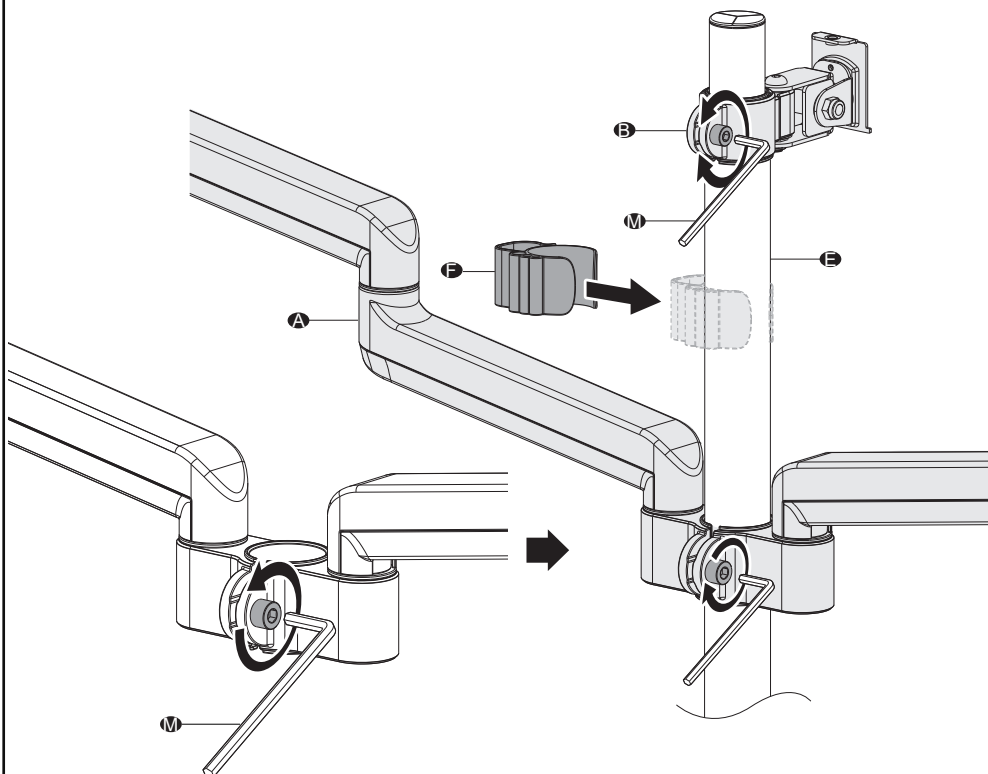
WARNING:

1. Firmly hold the two halves of the spring arm together and have another person cut off the cable tie from around the spring arm.
2. Slowly release the pressure on the spring arm and allow it to gradually stretch to its full extension.



Step 4

Put the Arm **A** and Monitor Arm **B** through the Pole **C**, adjust the preferred height and tighten using 6mm Allen Key **M**. Attach the Wire Clip **F** to the Pole **C**.



Step 5

Step 5.1 Select Monitor Screws

Only one screw size fits your Monitor

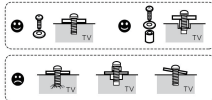
M4



M5

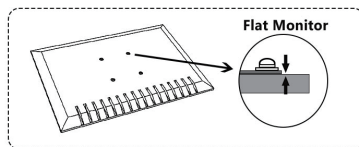


Hand thread screws into the threaded inserts on the back of your Monitor to determine which screw diameter (M4 or M5) to use.

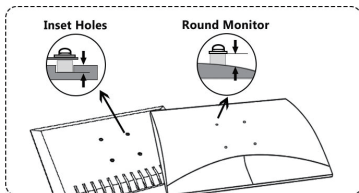


Step 5.2 Select Spacers (if needed)

NOT NEEDED

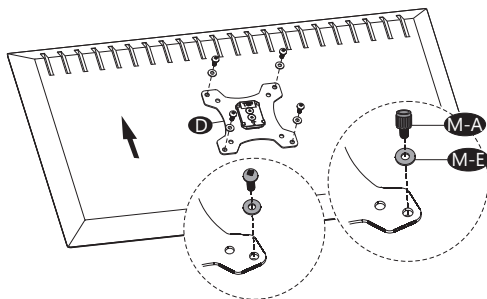


NEEDED FOR



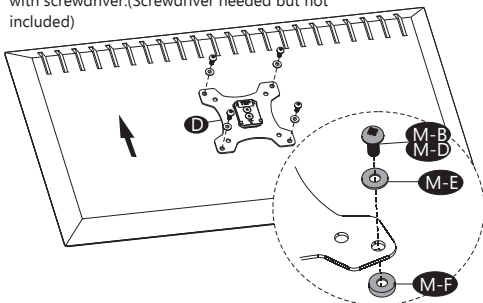
Step 5.3a

Select M4x12 Bolt **M-A** or M5x12 Bolt **M-C** according to your TV/Monitor, connect VESA Plate **D** together with D5 Washer **M-E** into the mounting holes on the back of TV/Monitor, tighten with screwdriver. (Screwdriver needed but not included)



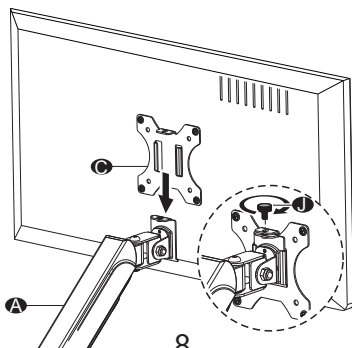
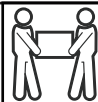
Step 5.3b

Select M4x16 Bolt **M-B** or M5x16 Bolt **M-D** according to your TV/Monitor, connect VESA Plate **D** together with D5 Washer **M-E** and Spacer **M-F** into the mounting holes on the back of TV/Monitor, tighten with screwdriver. (Screwdriver needed but not included)



Step 6

Put the assembled TV/Monitor onto the Arm **A** and ensure stability, tighten the VESA plate using Top Screw **1**.



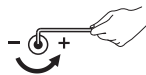
Step 7

To properly balance the arm with monitors mounted, adjust the spring tension with Allen Key 6mm .

First, position and firmly hold the arm horizontally as shown. Ask for assistance should you require it.



CAUTION: To avoid damage to monitors or mount, always keep the arm in a horizontal position while making adjustments. Again, ask for assistance if required.



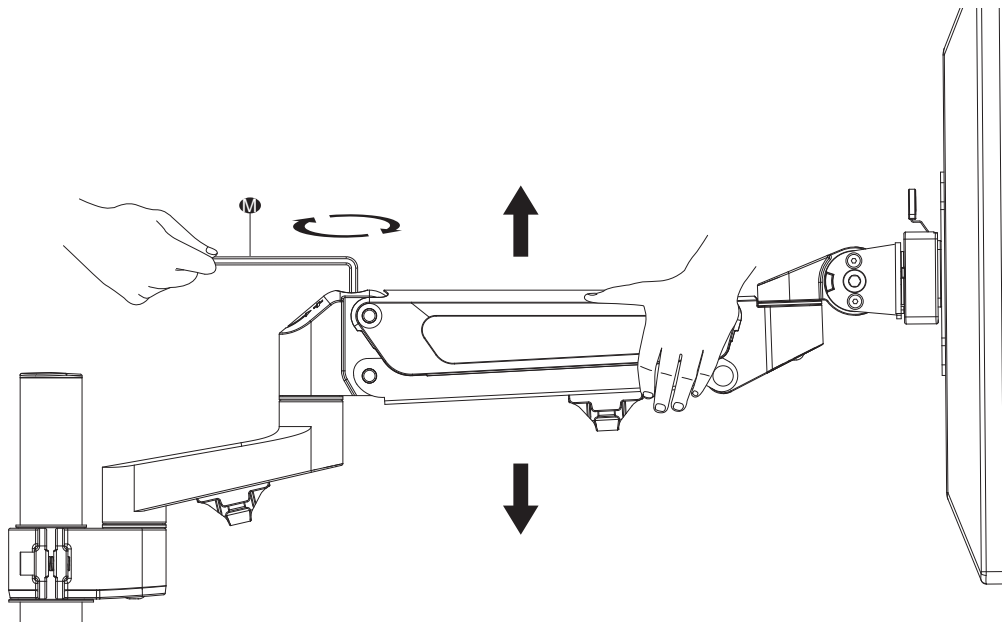
If the arm **drops**, turn the adjustment screw counter-clockwise until it stays in a horizontal position.



If the arm **risers**, turn the adjustment screw clockwise until it stays in a horizontal position.

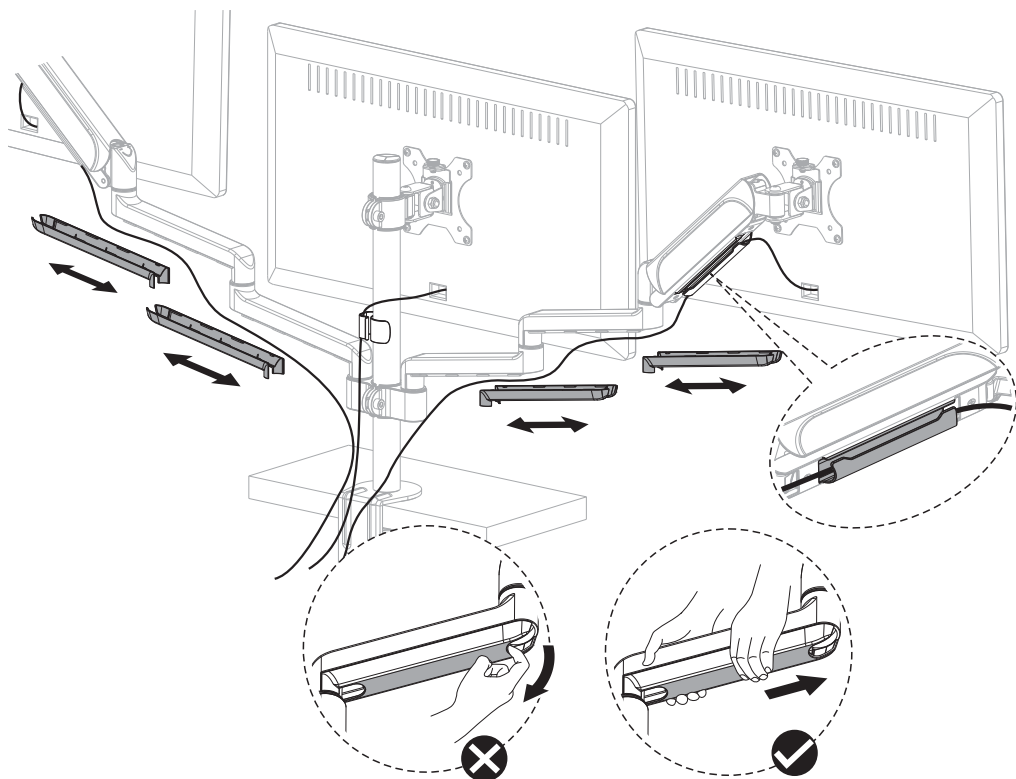


CAUTION: **DO NOT** over tighten the screws.



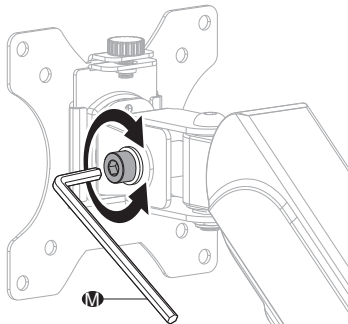
Step 8

Slide the cable slot covers towards the VESA plate direction to detach it off the arm. Guide the cable through the cable slot and put the cover back to the arm.

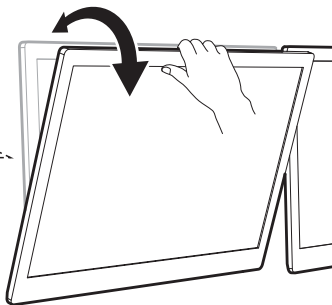


Step 9 Angle Adjustments

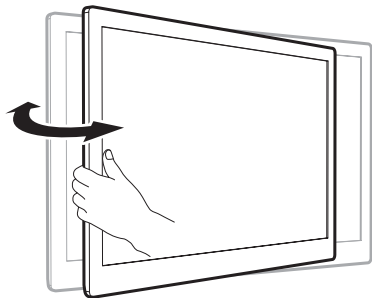
Tilt: Adjust the VESA Plate tilt using 6mm Allen Key **M**. (Tilt $+35^{\circ}/-35^{\circ}$)



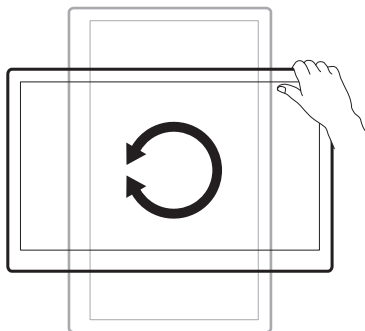
Note: If the display does not stop at your desired position, tighten the screws as shown.



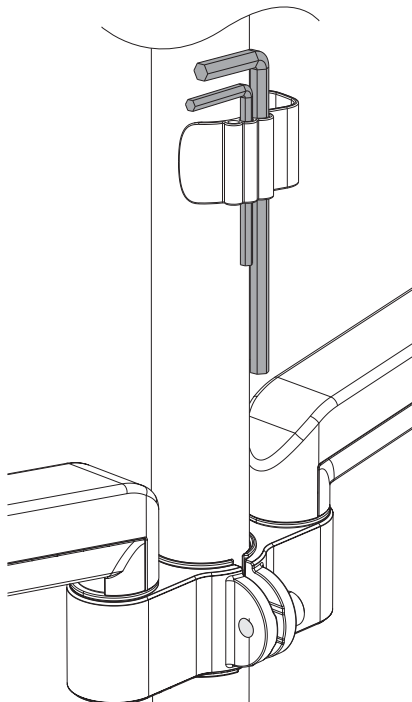
Swivel: Manually adjust swivel angle. (swivel $-90^{\circ}/+90^{\circ}$)



Rotate: Manually adjust rotate angle. (Rotate 360°)



Store the Allen Keys **L** **M** in the Wire Clip **P**.





Thank you for choosing us!

We support the technology that brings your home to life.
We offer high quality products, professional customer service,
and extensive technical support.

If you have any questions, please contact us.

 1-844-SATTLER (18447288537)

 support@wallelectric.com

 www.wallelectric.com