

# PRINTER CARD MANUAL

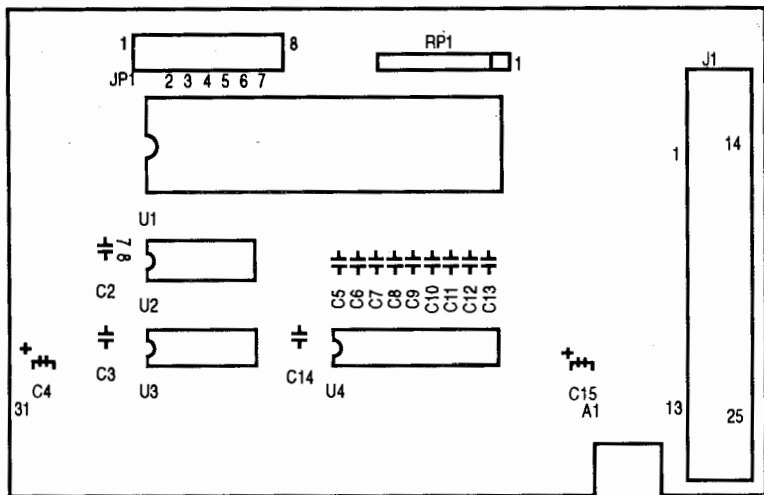
PT-2

® IBM PC, PC-XT, AT are registered trademarks  
of International Business Machines Corporation.

## GENERAL DESCRIPTION

PT2 Parallel Printer Adapter provides an interface between the 8088/80286/80386-based personal computer and parallel device such as the parallel printer. Eight bits of data are sent through the 25-pin D type connector at a time, with the data flow regulated by a set of data controlling signals.

## BOARD LAYOUT



## I/O ADDRESS & IRQ ASSIGNMENT

The I/O address can be jumper-selected among LPTA, LPTB, LPTC (which have the base I/O address 3BC, 378, and 278 respectively.)

I/O Address	JP1					
	1	2	3	4	5	6
378*	ON	OFF	OFF	ON	ON	OFF
278	ON	OFF	OFF	ON	OFF	ON
3BC	OFF	ON	ON	OFF	ON	OFF

"\*" Factory Setting

The IRQ assignment of PT2 can be jumper-selected among IRQ5, IRQ7.

IRQ	JP1	
	7	8
IRQ5	OFF	ON
IRQ7*	ON	OFF

"\*" Factory Setting

## PIN ASSIGNMENTS OF J1

Printer	- Strobe	1	Printer Adapter
	+ Data Bit 1	2	
	+ Data Bit 2	3	
	+ Data Bit 3	4	
	+ Data Bit 4	5	
	+ Data Bit 5	6	
	+ Data Bit 6	7	
	+ Data Bit 7	8	
	- Acknowledge	10	
	+ Busy	11	
	+ P. End (out of paper)	12	
	+ Select	13	
	- Auto Feed	14	
	- Error	15	
	- Initialize Printer	16	
	- Select Input	17	
	Ground	18-25	

This equipment has been tested and found to comply with the limits for a Class A digital device, pursuant to Part 15 of the FCC Rules. These limits are designed to provide reasonable protection against harmful interference when the equipment is operated in a commercial environment. This equipment generates, uses, and can radiate radio frequency energy and, if not installed and used in accordance with the instruction manual, may cause harmful interference to radio communications. Operation of this equipment in a residential area is likely to cause harmful interference in which case the user will be required to correct the interference at his own expense.