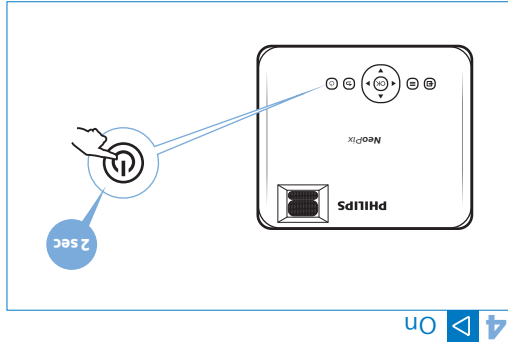
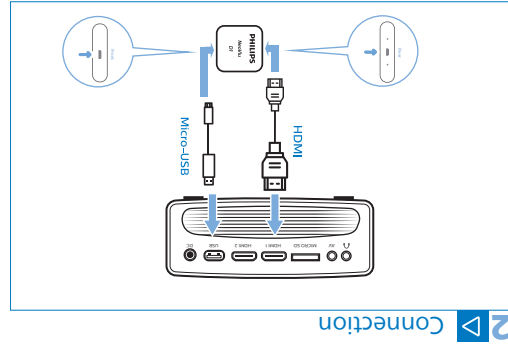


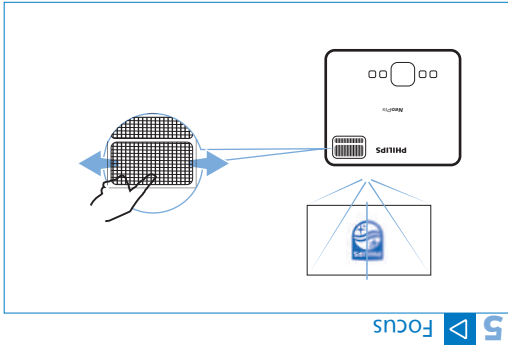
6 Keystone



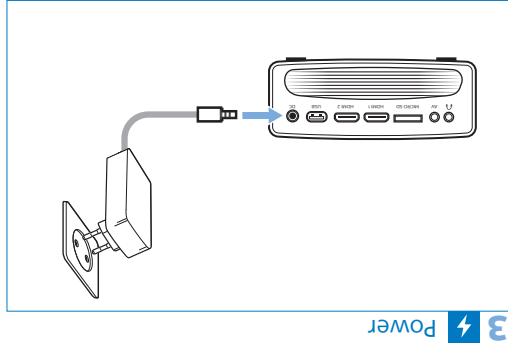
4 On



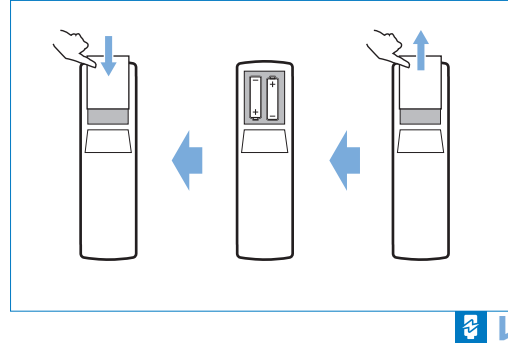
2 Connection



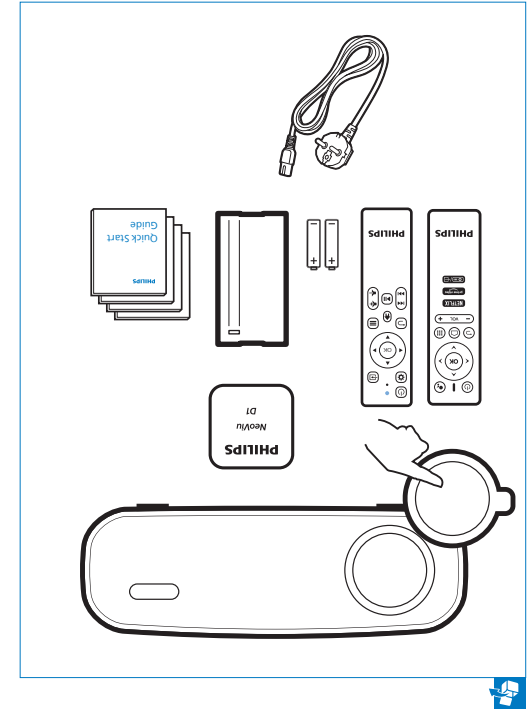
5 Focus



3 Power



1



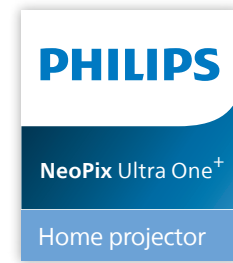
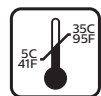
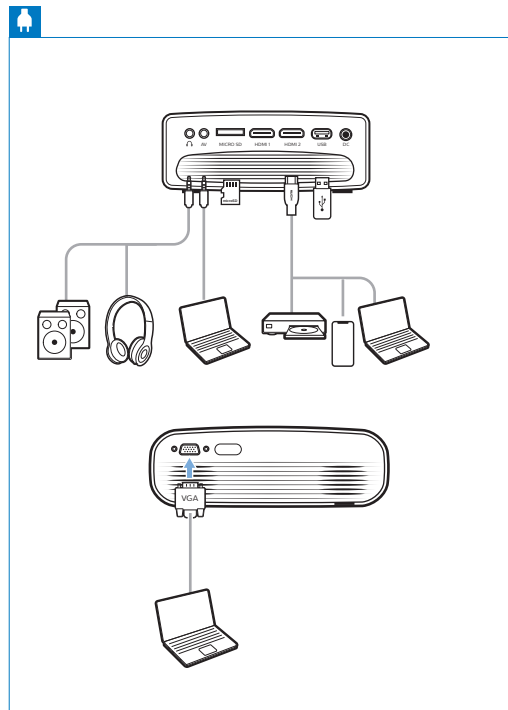
Screeneo Innovation SA
Route de Lully 5C
1131 - Tolochenaz - Switzerland
www.philips.com/welcome
philips.projector.eu@screeneo.com

Philips and the Philips Shield Emblem are registered trademarks of Koninklijke Philips N.V. and are used under license. Screeneo Innovation SA is the warrantor in relation to the product with which this booklet was packaged.

2022 © Screeneo Innovation SA
All right reserved

FCC ID:2ASRT-NPX646

This device complies with part 15 of the FCC Rules. Operation is subject to the following two conditions: (1) This device may not cause harmful interference, and (2) this device must accept any interference received, including interference that may cause undesired operation.

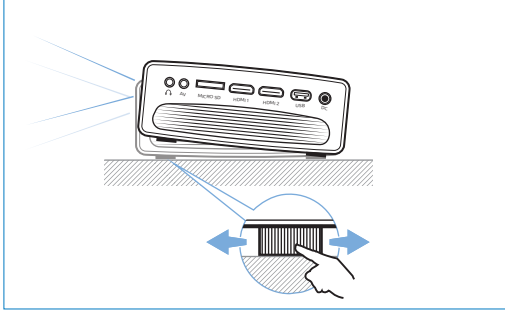


Quick Start Guide

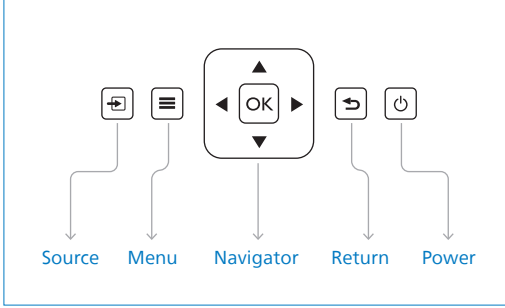
Download the **full user manual** at:
www.philips.com/support and register your product for further support



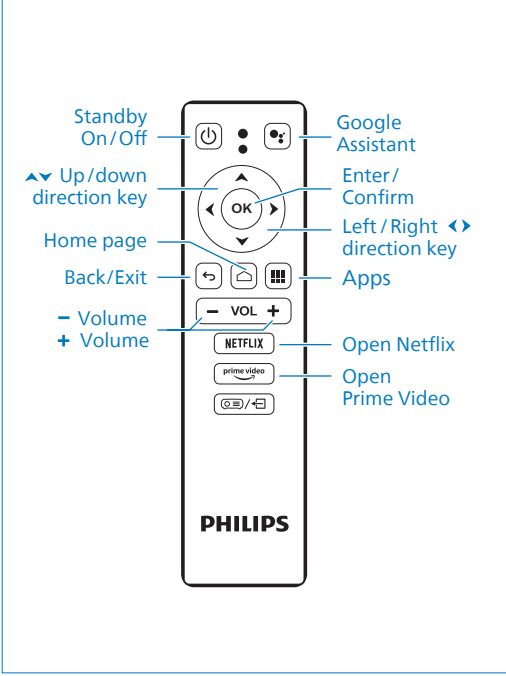
7 Adjustment knob



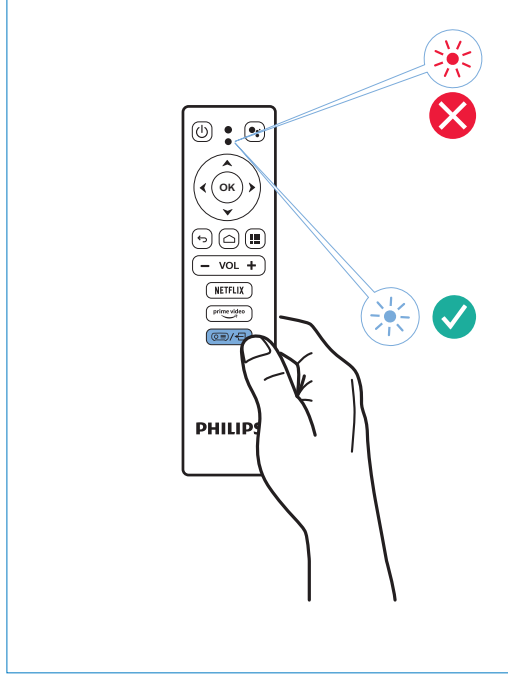
8 Keys



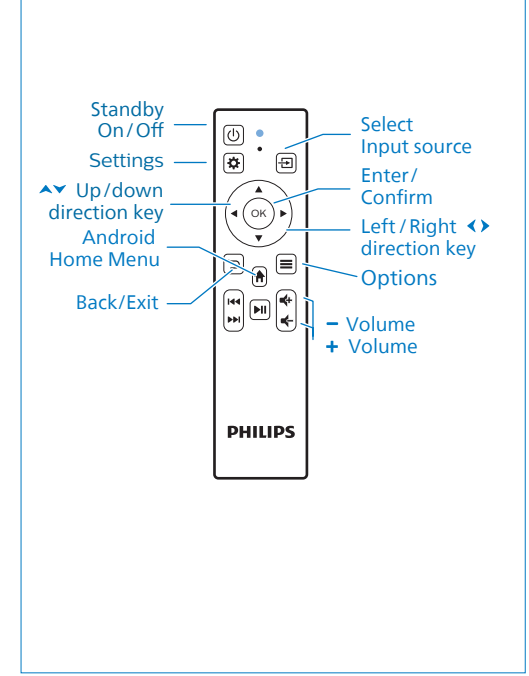
9 Android TV Dongle remote control



Android TV Navigation



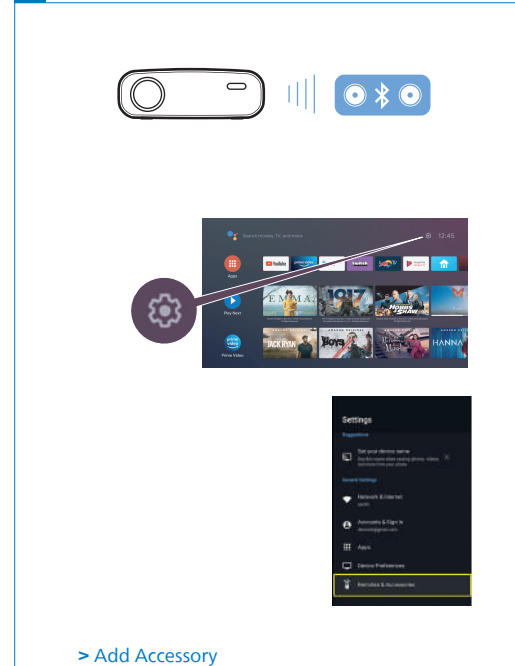
10 Projector remote control



Access to Android TV



Bluetooth speaker



Connecting phones/tablets to HDMI

