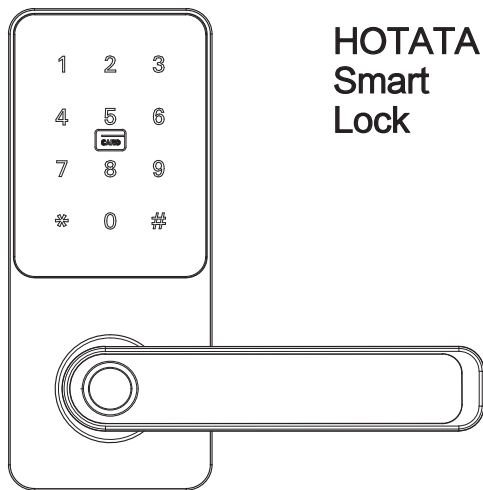


HOTATA

ENGLISH



HOTATA L
Smart
Lock

HOTATA SMART LOCK Installation Guide Model: SL102

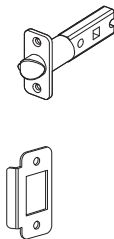
Installation video



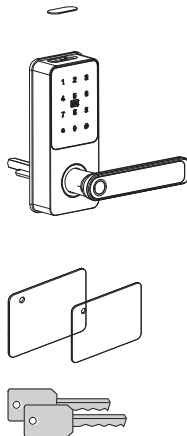
go to <https://www.amazon.com/hotata>
to watch short installation video

WHAT'S INCLUDED

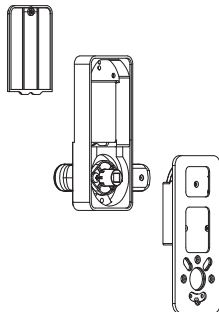
Latch and strike



Exterior Assembly



Interior Assembly



Screws



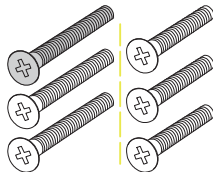
Step 2



Step 3.1



Step 3.2



Step 4



Step 6



What
you'll
need

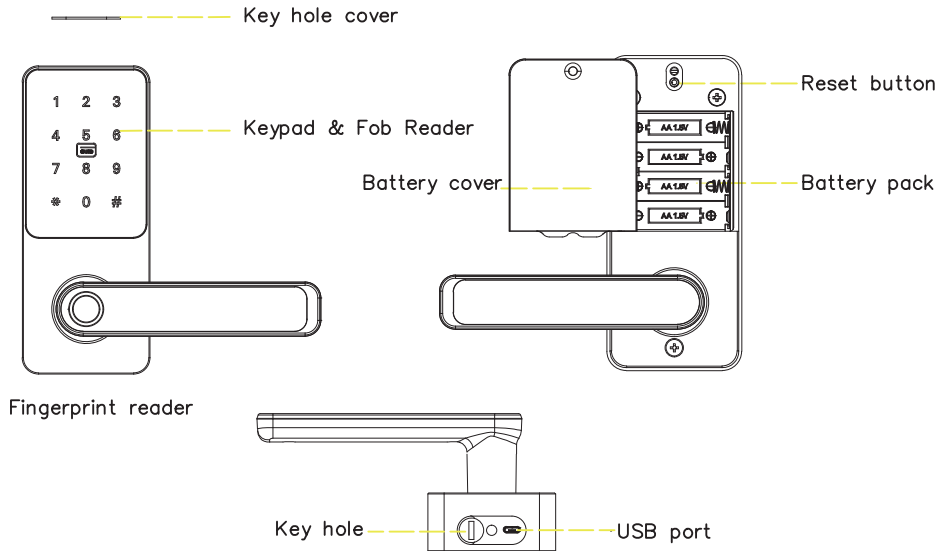


Phillips head Screwdriver
Note: No drill needed

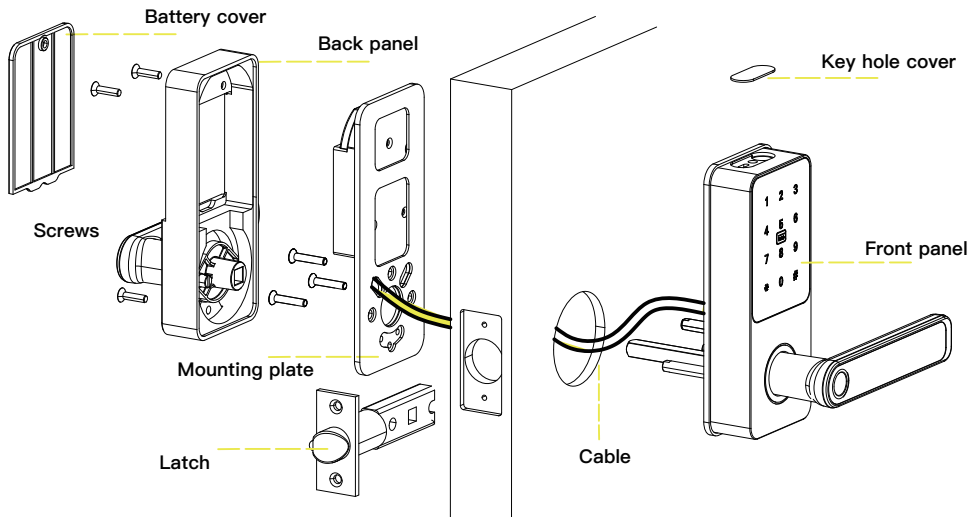
PRODUCT OVERVIEW

Front Panel

Back Panel



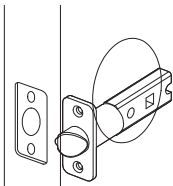
EXPLOSIVE VIEW



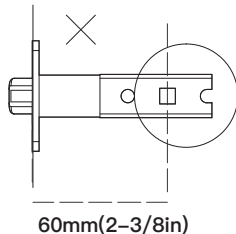
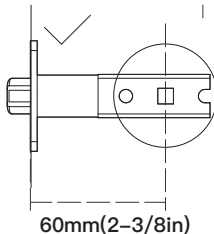
1

Adjust The Backset of Latch(If NEEDED)

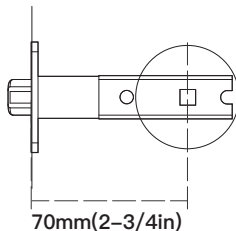
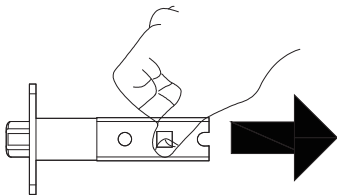
A Hold the latch in front of the door hole with the latch face flush against the door edge.



B If the latch holes are centered in the door hole, no adjustment is required. Proceed to step 2. If the latch holes are NOT centered, adjust latch. See "Latch Adjuster".



 Latch adjustment (only if needed)

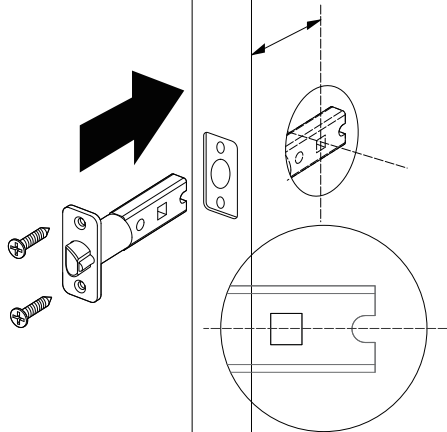


2

Install Latch

A

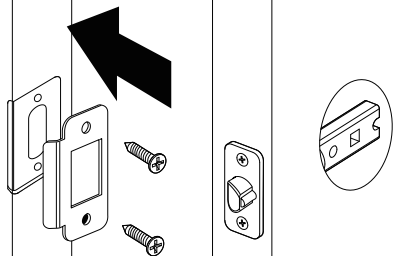
inside



Note:
The square hole
must be horizontal

B

inside

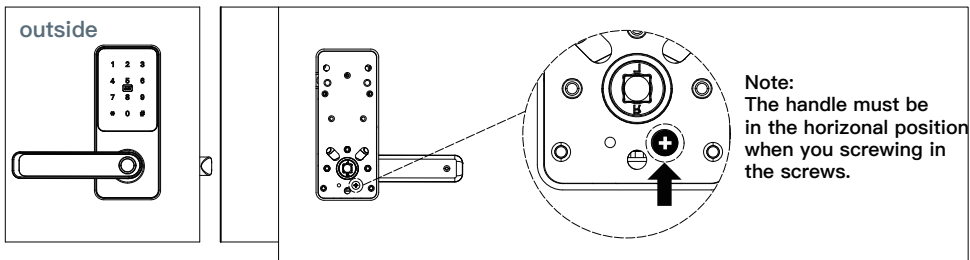


3

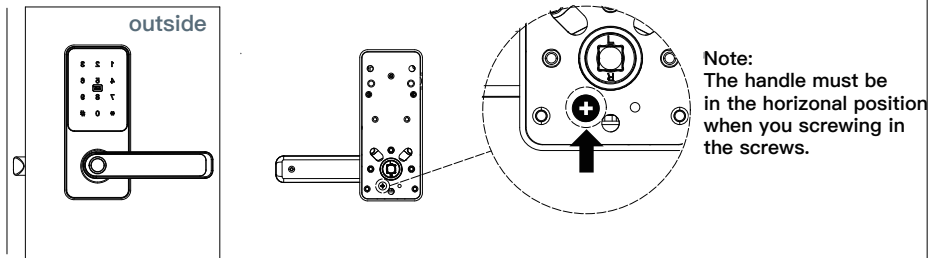
Adjust Lock Handle Direction

3.1 Exterior handle direction

Left hand



Right hand



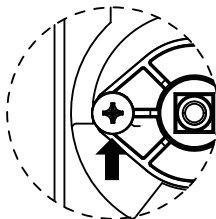
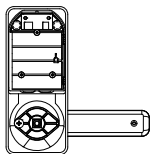
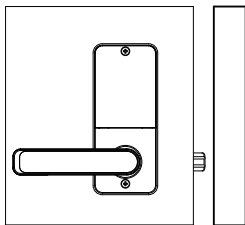
3

Adjust Lock Handle Direction

3.2 Interior handle direction

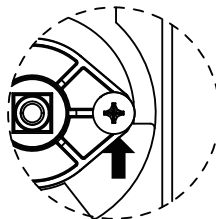
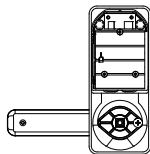
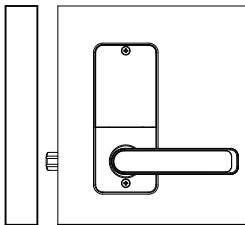
Left hand

Inside



Note:
The handle must be in the horizontal position when you screwing in the screws.

Right hand



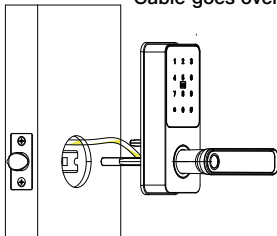
Note:
The handle must be in the horizontal position when you screwing in the screws.

4 Install Front Panel

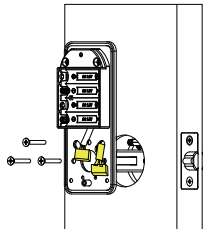
A

outside

Cable goes over latch



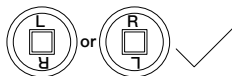
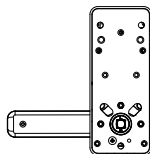
B



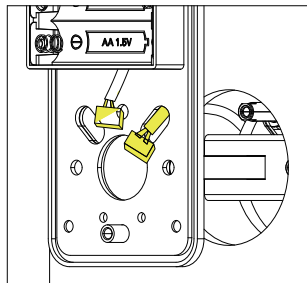
outside

IMPORTANT!

lock spindle is facing upside
before put the spindle through
the square hole.



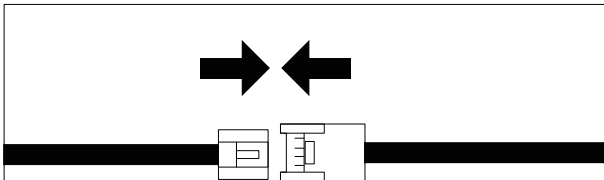
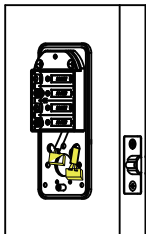
inside



5

Connect Wire Connector

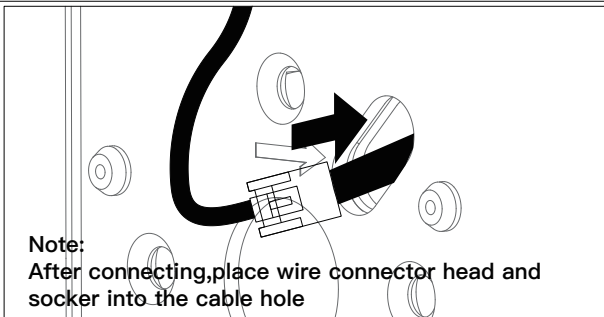
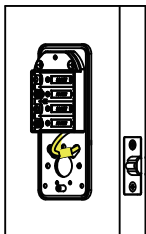
A inside



Note:

The wire connectors can only be connected in one way

B inside



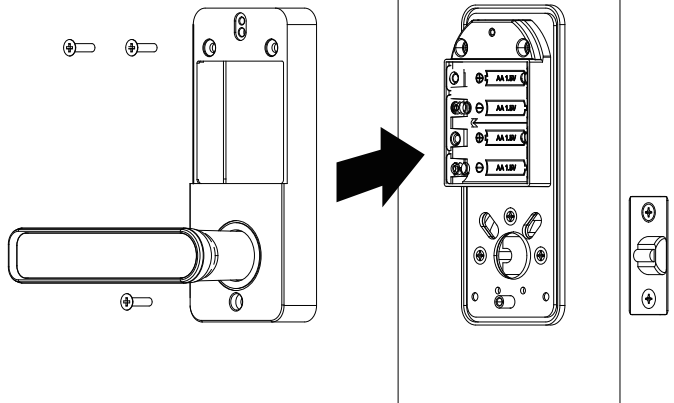
Note:

After connecting, place wire connector head and socker into the cable hole

6

Install Back Panel

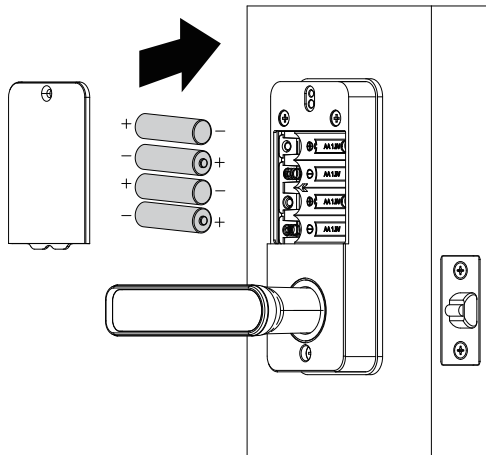
inside



7

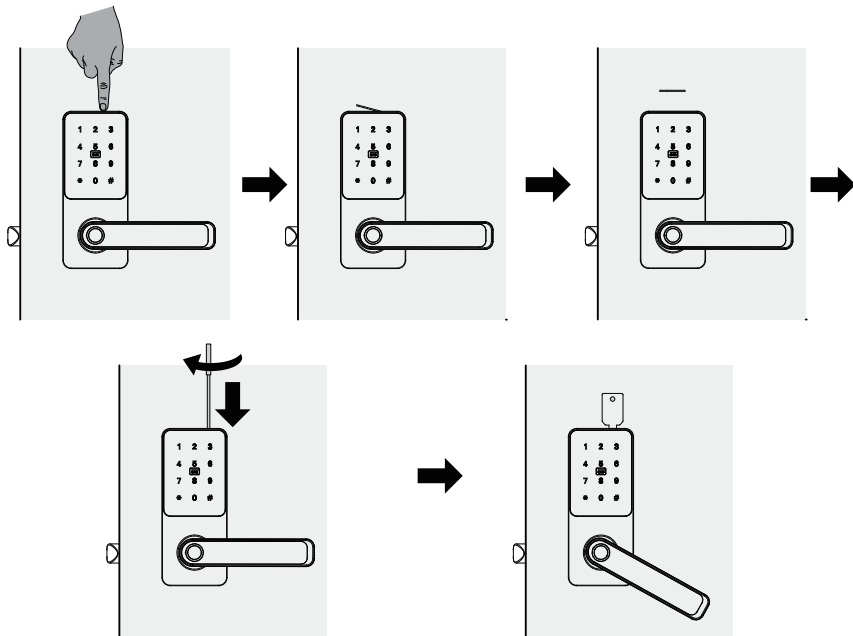
Install Batteries and Battery Cover

inside



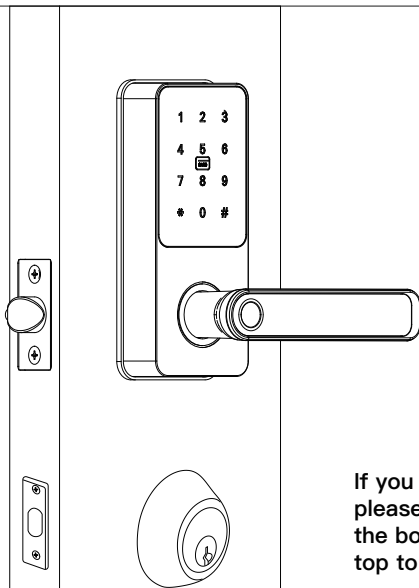
8

Insert The Key and Test The Installation



9

Install Our Lock On Top



FCC

This equipment has been tested and found to comply with the limits for a Class B digital device, pursuant to part 15 of the FCC Rules. These limits are designed to provide reasonable protection against harmful interference in a residential installation.

This equipment generates, uses and can radiate radio frequency energy and, if not installed and used in accordance with the instructions, may cause harmful interference to radio communications. However, there is no guarantee that interference will not occur in a particular installation. If this equipment does cause harmful interference to radio or television reception, which can be determined by turning the equipment off and on, the user is encouraged to try to correct the interference by one or more of the following measures:

- Reorient or relocate the receiving antenna
- increase the separation between the equipment and receiver.
- Connect the equipment into an outlet on a circuit different from that to which the receiver is connected.
- Consult the dealer or an experienced radio/TV technician for help.

E-Mail: aftersale@hotata.com

Return and Warranty Information

Return Policy

30 day money back guarantee from date of purchase. Some exceptions may be made with a restocking fee on a case by case basis and buyer may be responsible for return shipping cost. For inquiries regarding this, please contact us at Email: aftersale@hotata.com.

Product Warranty

We offer a 1 year free replacement from the date of purchase. To claim your warranty replacement, the first request or inquiry must be made within 1 year of date of purchase. Any requests or inquiries after 1 year from the date of purchase are not eligible for warranty. HOTATA reserves the right to deny a replacement request.

For inquiries regarding this, please contact us at aftersale@hotata.com.

Thank you for choosing HOTATA. Your opinion is matter to us!
We are always here to help.

In case of special circumstances,
there are several ways to get help:

1. Email us via aftersale@hotata.com
2. Use the chat box on the Amazon website.