



# SLIDE TRACK

## OEM INSTALLATION MANUAL

# TABLE OF CONTENTS

Introduction .....	2
Safety .....	2
Resources Required .....	2
Installation .....	3

## Introduction

This manual describes installation of seat slide tracks, a horizontally-mounted assembly that allows a seat to slide from front-to-back and then lock in a fixed position.

For additional support on this product, please visit: <https://support.lci1.com/seating-structures-and-mechanisms>

**NOTE:** Images used in this document are for reference only when assembling, installing and/or operating this product. Actual appearance of provided and/or purchased parts and assemblies may differ.

## Safety

Read and understand all instructions before installing or operating this product. Adhere to all safety labels.

This manual provides general instructions. Many variables can change the circumstances of the instructions, i.e., the degree of difficulty, operation and ability of the individual performing the instructions. This manual cannot begin to plot out instructions for every possibility, but provides the general instructions, as necessary, for effectively interfacing with the device, product or system. Failure to correctly follow the provided instructions may result in death, serious personal injury, severe product and/or property damage, including voiding of the Lippert limited warranty.

### WARNING

The "WARNING" symbol above is a sign that an installation procedure has a safety risk involved and may cause death, serious personal injury or severe product and/or property damage if not performed safely within the parameters set forth in this manual.

### WARNING

Failure to follow the instructions provided in this manual may result in serious injury, damage or voiding of the product warranty. Always wear eye protection when performing installation, service or maintenance. Other safety equipment to consider would be hearing protection, gloves and possibly a full face shield, depending on the nature of the service.

### CAUTION

The "CAUTION" symbol above is a sign that a procedure has a risk involved that may cause personal injury and/or product damage if not performed safely and within the parameters set forth within this manual.

### CAUTION

Moving parts can pinch, crush or cut. Keep clear and use caution.

## Resources Required

- Cordless or electric drill or screw gun
- Appropriate drive bits
- Needle-nose pliers
- X-frame alignment tool (See Note)
- 5/16" washers
- 5/16" flange nuts

**NOTE:** To receive the proper X-frame alignment tool, contact Lippert. Lippert can fabricate an X-frame alignment tool based on dimensions detailed by the OEM, including measurements from center-to-center of the bolts used for the particular application. Alternatively, the OEM can create a X-frame alignment tool from instructions provided by Lippert, including recommended material to be used for the tool.

## Installation

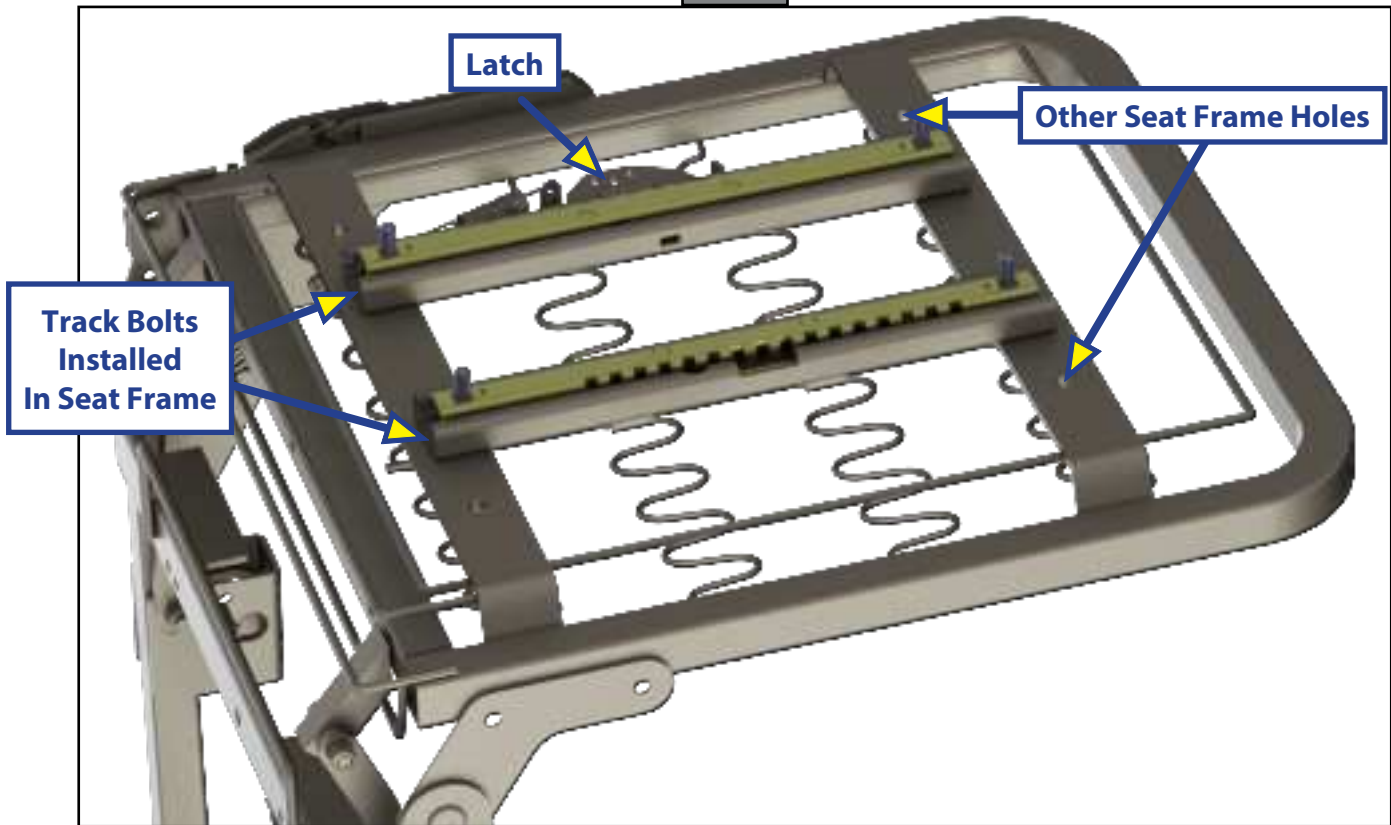
1. Turn over seat frame so the underside is accessible.
2. Insert slide track bolts into the appropriate seat frame holes (Fig. 1).

**NOTE:** The assembly's upper track should be placed against the frame, while the lower track should face the installer (Fig. 2).

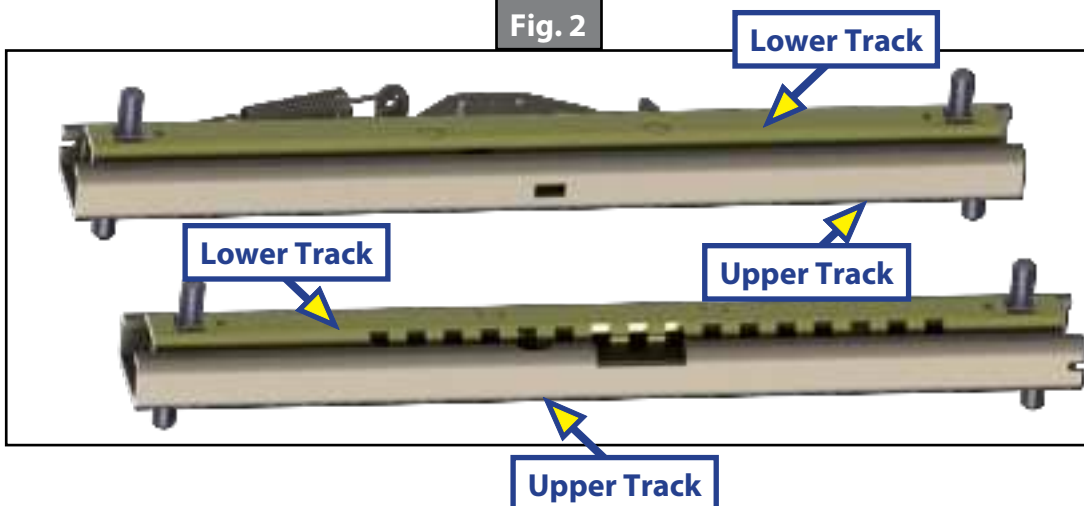
**NOTE:** Bolt length varies as to application and OEM need.

3. Place the track with the latch on the side of the seat where the handle will be located (Fig. 1).

**Fig. 1**



**Fig. 2**



4. Install a  $\frac{5}{16}$ " washer and flange nut on the four upper track bolts (Fig. 3) and finger-tighten the nuts.

**NOTE:** A washer to function as a spacer is required for every slide track fastener, including those on both upper and lower tracks. The spacer prevents the slide track from binding during operation.

Fig. 3



5. Install the X-frame alignment tool (Fig. 4) to keep slide tracks parallel and square to one another. Place tool over the four bolts on the lower tracks (Fig. 5).

**NOTE:** Keep alignment tool in place until installation and testing is completed.

6. Firmly tighten the four nuts on the upper track bolts (Fig. 3).

Fig. 4

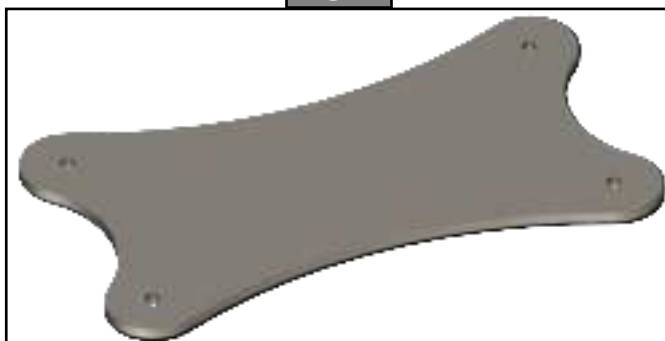
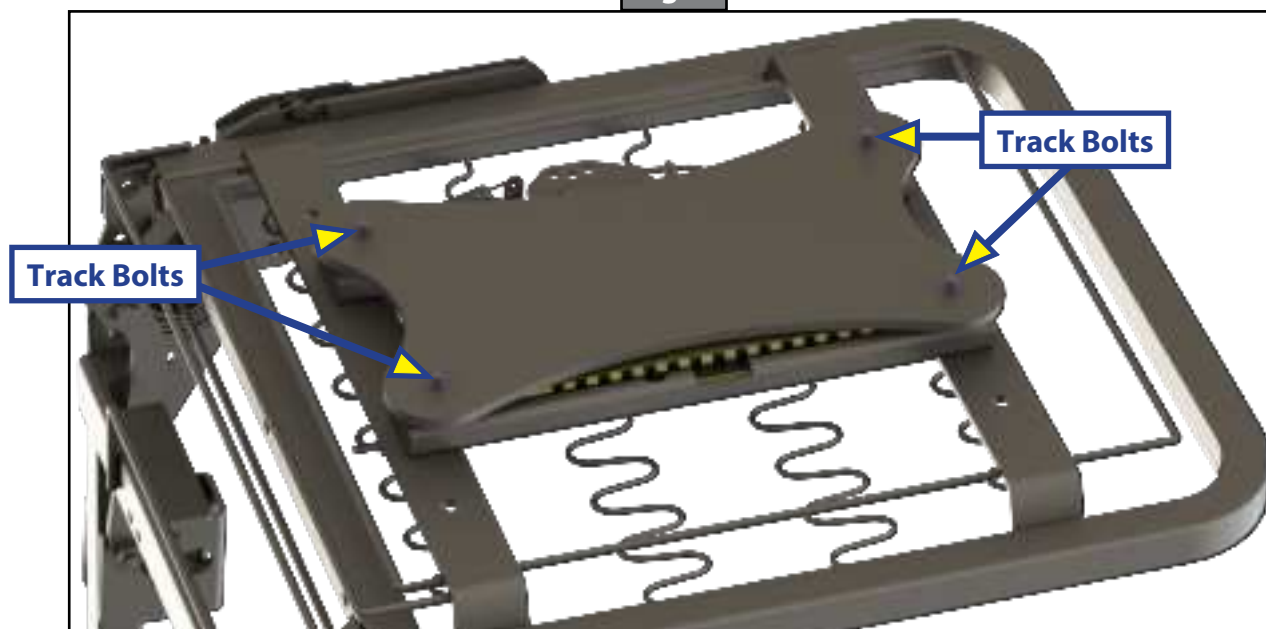
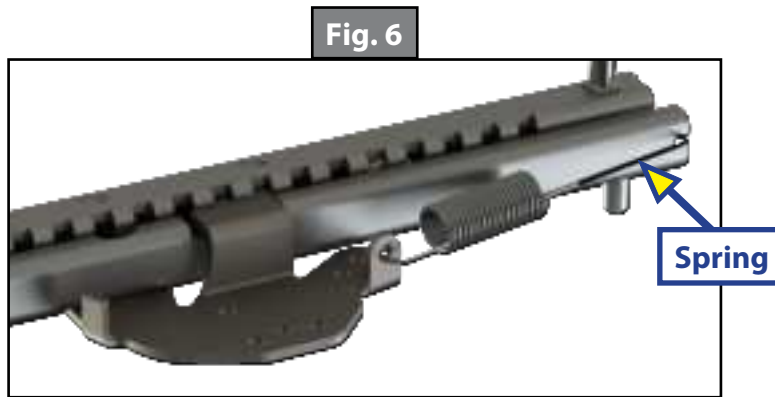


Fig. 5



7. Using needle-nose pliers, remove the spring from the latch (Fig. 6).

**NOTE:** Frame removed from latch image for clarity.



8. Test the operation of the slide tracks by repeatedly sliding them up and down.
9. Replace spring on the latch.
10. Remove X-frame alignment tool.



The contents of this manual are proprietary and copyright protected by Lippert. Lippert prohibits the copying or dissemination of portions of this manual unless prior written consent from an authorized Lippert representative has been provided. Any unauthorized use shall void any applicable warranty. The information contained in this manual is subject to change without notice and at the sole discretion of Lippert. Revised editions are available for free download from [lippert.com](http://lippert.com).

Please recycle all obsolete materials.

For all concerns or questions, please contact Lippert  
Ph: 432-LIPPERT (432-547-7378) | Web: [lippert.com](http://lippert.com) | Email: [customerservice@lci1.com](mailto:customerservice@lci1.com)