

VBELL 1

.....

Arenti

QUICK GUIDE

EN Wire-free Battery Powered Video Doorbell

FR Sonnette vidéo à piles sans fil

NL Draadloze video-deurbel op batterijen

ES Timbre con video sin cables a batería

PT Campainha de vídeo alimentada por bateria sem fio

DE Kabellose batteriebetriebene Video-Türklingel

IT Campanello video alimentato a batteria senza fili

RU Беспроводной видеодомофон с питанием от батареи

TU Telsiz Akülü Video Kapı Zili



Compatible with Amazon Alexa & Google Assistant

Quick start guide

1. Packing list
2. Product description
3. Installation
4. Product configuration
5. Legal notice

1. Packing list



Camera 1X



Power adaptor 1X



USB cable 1X



Chime 1X



Screws 3X



Screwdriver 1X



Warning sticker 1X



3M sticker 2X



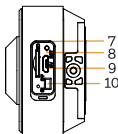
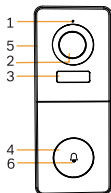
Quick guide 1X



Bracket 1X*

* The bracket is attached to the camera.

2. Product description



1. Microphone
2. Lens
3. PIR
4. Doorbell button
5. Speaker
6. LED indicator
7. SD card slot
8. Reset
9. DC5V USB
10. Device ON/OFF



Notice

To reset the device, press and hold the reset button for 5s.
The camera beeps when the operation is complete.

LED indicator of camera:

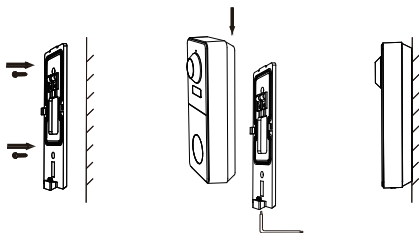
Flashing red light (slow)	Wait for network config
Flashing red light (fast)	Connecting the network
Fixed red light	Network is malfunctional
Fixed blue light	Camera is working correctly

LED indicator of chime:

Flashing red light	Wait for pairing
Fixed blue light	Succeed to pair

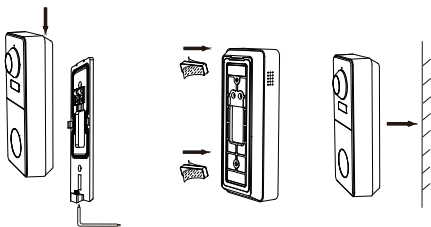
3. Installation

Installation with screws



1. Fix the bracket to the wall with the mounting screws.
2. Install the camera in the bracket and lock it with the screw.

Installation with 3M stickers



1. Lock the bracket to camera with the screw at the bottom.
2. Stick the adhesive tapes to the barcket.
3. Stick the other side of adhesive tapes to the wall.

4. Product configuration

Step 1 Turn on your camera.

Step 2 Connect your smartphone to the Wi-Fi network.

Step 3 Download Arenti app from the App Store or Google Play depending on your device.

Step 4 Launch the App and sign up for the first use.

Step 5 Follow the on-screen instructions to add your camera.

For more information, scan the QR code.



Notice

If you have multiple cameras, please follow step 5 again to add devices one by one.

To change Wi-Fi network, please restore the camera to factory settings and follow step 5 to add the camera.

Chime Pairing

1. Short press "⚙️" (within 2 seconds), the status light flashes red slowly and the chime will be in pairing mode.



During pairing mode, it will blink red

2. Press the doorbell button to pair, when the chime status light turns off, and the song will play automatically, the chime pairing is successful at this time.

Description:

1. The chime can connect to maximum eight doorbells.
2. When the chime is in pairing mode, press the "⚙️" again (within 2 seconds), the chime will automatically exit the pairing mode.
3. After adding the chime successfully, the volume will be adjusted to the maximum automatically. When it is at the minimum volume, it will return to the maximum volume after pressing "🔊".
4. Each press "🔊", will play the next song along with blinking blue light.

When playing ringtone, it will blink blue



Specifications

Sensor type	1/2.8" CMOS
Min. brightness	Color 0.1Lux@F2.0
	Black and white 0.01Lux@F2.0
Resolution	3 Mega pixels
Lens	3.2 mm F2.0
Shutter	1/15-1/10,000 per second
Infrared	High power LED with ICR
Infrared distance	5 meters
FOV	130°
Video compression	H.264
Bit rate	32Kbps - 2Mbps
Max resolution	2304 x 1296
Framerate	1-25 per second
Picture settings	Support HD/SD; support flip
Storage	SD card (Max 256GB)
Audio	Two-way audio
Protocols	HTTP, DHCP, DNS
WiFi standard	IEEE802.11b/g/n
Frequency	2.4 GHz - 2.4835 GHz
WiFi encryption	WPA-PSK/WPA2-PSK
Security	AES128
Working temperature	-20°C~50°C
Power	DC5V,1A
Consumption	4.5W MAX
Size(mm)	27.5x18x142
Battery	6700mAh
Standby consumption	200μA (average)
Work consumption	220mA (IR off)
Standby time	10 months
Working time	3 months (10 times wake up per day)
PIR Detection Rangle	7m (Max.)
PIR Detection Angle	100°

5. Legal notice

Support

www.arenti.com

Symbols

== Direct current (DC)



Don't throw batteries or out of order products with the household waste (garbage). The dangerous substances that they are likely to include may harm health or the environment. Make your retailer take back these products or use the selective collect of garbage proposed by your city.



Hereby, Arenti, declares that the radio equipment type 'VBell 1' is in compliance with the Directive 2014/53/EU

The full test of the EU declaration of conformity is available at the following Internet address:
www.arenti.com



For indoor use only

