



GPS Navigation User's Manual

English.....	1~ 30
Deutsch.....	31~65



Scan the QR code to get electronic manuals in different languages, namely English, Deutsch, Français, Español, Italiano, which you can view online or download and save.

Warning:

This device complies with Part 15 of the FCC Rules. Operation is subject to the following two conditions: (1) this device may not cause harmful interference, and (2) this device must accept any interference received, including interference that may cause undesired operation.

Changes or modifications not expressly approved by the party responsible for compliance could void the user's authority to operate the equipment.

NOTE: This equipment has been tested and found to comply with the limits for a Class B digital device, pursuant to Part 15 of the FCC Rules. These limits are designed to provide reasonable protection against harmful interference in a residential installation. This equipment generates uses and can radiate radio frequency energy and, if not installed and used in accordance with the instructions, may cause harmful interference to radio communications. However, there is no guarantee that interference will not occur in a particular installation. If this equipment does cause harmful interference to radio or television reception, which can be determined by turning the equipment off and on, the user is encouraged to try to correct the interference by one or more of the following measures:

- Reorient or relocate the receiving antenna.
- Increase the separation between the equipment and receiver.
- Connect the equipment into an outlet on a circuit different.
from that to which the receiver is connected.
- Consult the dealer or an experienced radio/TV technician for help.

NOTE: This device and its antenna(s) must not be co-located or operation in conjunction with any other antenna or transmitter

RF Exposure Statement

To maintain compliance with FCC' s RF Exposure guidelines, This equipment should be installed and operated with minimum distance of 20cm the radiator your body. This device and its antenna(s) must not be co-located or operation in conjunction with any other antenna or transmitter

Content

Foreword.....	2
Safety & Notice.....	2
Tips Attention.....	3
Frequently Asked Questions.....	3
Map Updates.....	6
1. Getting Started.....	8
1.1 Navigator.....	8
1.2 Power Supply and Charge.....	9
2. Navigator Menu.....	10
2.1 Main Menu.....	10
2.2 Function Introduction.....	10
2.3 Bluetooth(for Bluetooth Models Only).....	11
2.4 Software Settings.....	14
2.5 Navigation Path Settings.....	15
2.6 GPS Info.....	16
2.7 FM Function.....	17
3. Navigation Menu.....	18
3.1 Find Menu.....	19
3.2 Navigation Settings Menu.....	22
3.3 Sound and Warnings.....	24
3.4 Language Settings.....	25
3.5 Vehicle Settings.....	27
3.6 Visual Guidance Settings.....	28
3.7 Units Settings.....	29
3.8 Time Setting.....	30

Foreword

Thank you for choosing our product. This is the user manual for your reference. It is easy to use, and we recommend this manual to help you fully understand the functions and features.

If You Have Any Questions About GPS Navigation and update the latest Map, Please Contact us with shopping website or email. We have a professional service team to solve your problems. We Will Reply to You as soon as possible.

Safety & Notice

WARNING: Please pay attention to these guidelines, it's dangerous and may break the law, even the manufacturer will not undertake any responsibility to the user who does not follow with the following recommendations or improper to use the GPS navigation.

1. Do not use sharp objects to touch the screen.
2. Do not pile up on the equipment, don't press the screen hardly, otherwise may lead to a broken screen.
3. Keep the device away from the children.
4. Do not drop, knock, or shake the equipment from a high place. Rough handing can damage internal circuit board.
5. Do not use wet hands to touch the equipment when charging the battery, it will cause electric shock, injury to person or damage the equipment.

- 6.Keep equipment dry. Rainwater, humidity and equipment of all types of liquids may contain minerals that corrode electronic circuits.
- 7.Please dispose of batteries according to local regulations, please recycle when possible. Please do not dispose as household waste.

Tips Attention

- Do NOT connect the USB cable to PC to charge the device.USB cable for updating map data.
- Please use the original Car Charger to charge the navigation.
- GPS signal will only be connected in open or outside areas or in your vehicle and does not work well inside buildings. The GPS can only find your location and calculate your route with a signal.
- If the GPS navigation application will not run, please make sure to set the NAVI configuration first. Please look in the user guide under NAVI Path.
- Support FM transmitter, NOTICE that FM not mean FM radio, JUST for transferring the GPS sound to your car. Please do not mistaken.
- Please read the user manual and description carefully, try more times to use, some settings will be remembered,finally we found it is easy to use.

Frequently Asked Questions

(1)Q: What should I do if the machine does not turn on when received it?

A: Please use the original car charger to charge the

machine for a while and then turn it on again. Or please connect the USB cable with the 5V2A plug to charge the device. Do NOT connect the USB cable to PC to charge the device.

(2)Q: Why it can't receive the satellite signal?

A: GPS signal will only be connected in open or outside areas or in your vehicle and does not work well inside buildings. It takes about 5-20 minutes to collect stars for the first time, please be patient. The GPS can only find your location and calculate your route with a signal.

(3)Q: Why when I click Navigation Icon, it has nothing happen, can't enter the map?

A: Please check the GPS path, it may not be set. Navi Path setting Steps: Settings—NaviConfig—...—Resident Flash—US (or EU/AU) , set step by step, until it shows “.exe”, if still can't set, please contact us!

(4)Q: The map is too old, how can I update the map?

A: We preload the newest maps before shipping, usually, we provide maps update per year for customers, if you need update map, please contact us.

(5)Q: Why the map information is not the same as the actual road information?

A: As the map updates per year, there are some minor different between the map and actual road information, we suggest you update your map to the latest version. Note: Please refer to the actual road information.

(6)Q: How to change the vehicle mode?

A: When you want to select different vehicles, please follow the steps below: Navigation-Settings (Tool icon)-Route Settings-Vehicle, after you select, please exit the navigation, then enter it again.

(7)Q: How to use Postcode search?

A: When you use the GPS navigation to search destination, the postcode search is within "Find Address" (NOTE: If the postcode contains space, such as "G43 1E8", don't forget to enter a space, otherwise the search will not match.) [Menu--Navigation--Destination--Find Address--Select Country--Select City/Town--Enter Postcode].

(8)Q: Directions and voice alerts are not loud enough?

A: ①adjust volume, Volume setting steps: Navigation-Settings (Tool icon)-Sound and Warnings-Volume, to slide the round icon to full volume.

②FM settings. Turn on the FM setting, the car radio and the FM of the machine are on the same channel, the sound will come out of the radio, and the sound will be louder. The FM setting

must be in the off position if not use, or GPS sound will be muted.

③on noisy streets or highways, it is recommended to close the windows of the car and use the machine to avoid excessive external noise and cover the sound of the machine to cause a bad experience.

(9)Q: Why the battery does not last long time?

A: For better use and considering that the battery is fully charged more for emergency use, we recommend that it is better to plug in the car charger while driving.

(10)Q: What to do if the machine is stuck?

A: If the screen is stuck, please press and hold the “Reset” button on the back of the navigation.

Map Updates

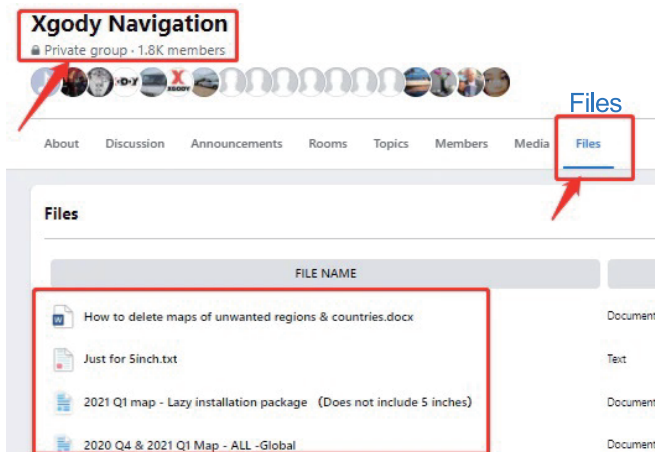
Please to go:www.xgody.com/pages/navigation-faq

Enter the website address into your browser's address bar or search.

If your browser cannot find or load into the site, try entering the address into Google search.

On the Navigation FAQ, and find the Question “How can I update map for free? how long can you support update?”.

- You follow our Facebook group to get the new maps link, XGODY-Navigation: **@XGODYcarstereo**



- Download Update Sat Nav Map For Free & New In xgody.com

Download Update Sat Nav Map For Free & New In xgody.com

<https://xgody.com/blogs/news/how-to-update-xgody-navigation-map>

- The device came up pre-installed with the latest map, you will not need to update right away.
- Normally the map is updated every six months.
- If the map is not updated, it means that the GPS map of the local department has not collected data.
- Please consult customer service staff for specific update times.

Access Video Tutorials

We have included some video tutorials for you to watch at your leisure. The videos will show how to use your device.

Visit the link to our YouTube channel to access all video tutorials:

www.youtube.com/@XGODY-Linking

1.Getting Started

1.1 Navigator

Here will introduce functions and features:



1.Power	Power ON/OFF
2.Earphone	To connect your earphone
3.TF card slot	To insert your TF card
4.AV-IN	Connect the rear view camera (Only for bluetooth machines)

5.mini USB	Connect the car charger to charge, connect the USB cable to update the map
6.Reset	Press to reset the table if it freezes or behaves
7.Microphone	Microphone
8.Speaker	Speaker

1.2 Power Supply and Charge

This machine adopts built-in, unchangeable Lithium battery. In normal condition (if the back light is not so bright), the actual supply hour may different due to the different using way. Some functions (like audio playing, video playing, bright back light) will consume power.

Please use car charger to fully charge when the navigator being used at the first time. The built-in battery is mainly used for eme-rgencies, please keep the navigation device connected to the car charger.

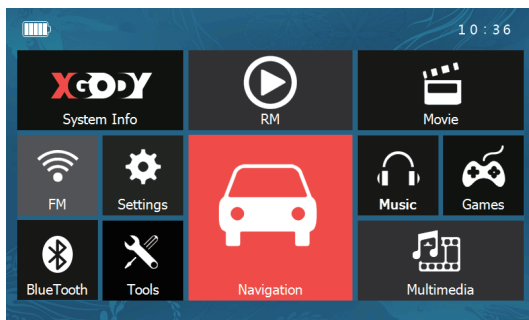


【Note】 Please insert the car charger after starting the car so as not to damage the machine or charger result from electricity collision.

2.Navigator Menu

2.1 Main Menu

Menu Page:



2.2 Function Introduction

RM	Play RM formats video files
Movie	Play ASF, AVI, WMV, 3GP, MP4 and FLV formats video files, support progress selection, pause, full screen play
FM	FM transmitter (76.0MHz -108MHz) Transfer the GPS sound to Car, not FM Radio
Settings	Volume, Backlight, Language, NaviConfig, Calibrate, USB, Date/Time

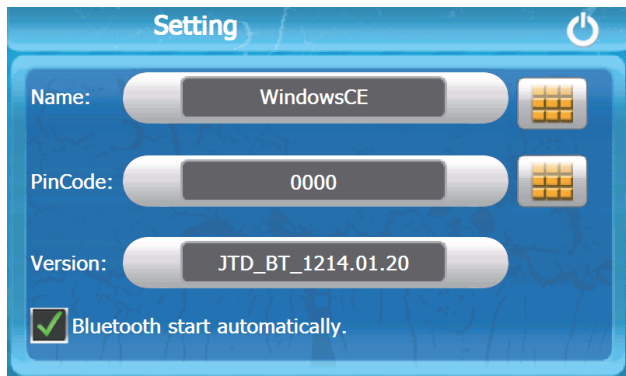
Navigation	Provide navigation service
Music	Support MP3 and WMA formats file formats, support random play, loop play and sequential play
Games	Support game
Bluetooth	This device can answer and make phone after connecting with mobile phone via Bluetooth (only available for devices with Bluetooth)
Tools	Calculator, Unit, Gps Info
Multimedia	EBook, FLASH

2.3 Bluetooth(for Bluetooth Models Only)

On the Bluetooth model, the BT function can be used to make and receive phone calls. **Tap the Bluetooth icon** on the home screen. Then. **tap on the settings icon**.



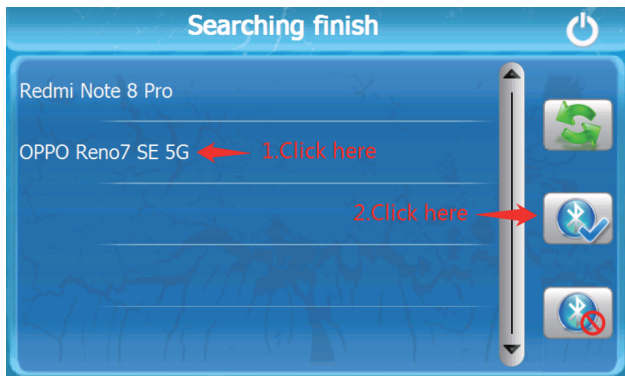
In settings make note of the device name and pin code that will be used to pair your phone.



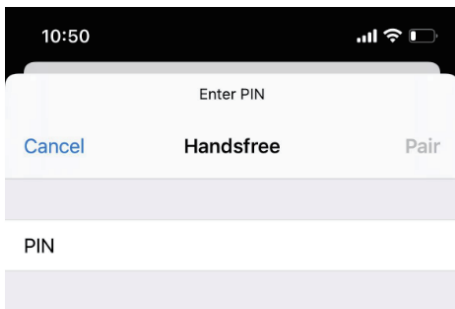
Press the off button on the top right of the screen to return to the previous screen.

Next, turn on Bluetooth settings on your phone, and search for the device name, in this example it is called Windows CE.

Another method is to click Bluetooth-Search to find the Bluetooth of your mobile phone, find the Bluetooth name of the mobile phone, and click to connect.



Select the device and enter the pin code to connect to the GPS device.



Your device will now be connected, phone contacts will be synced with the device. You can access your contacts in the phonebook section on Bluetooth.

If you are having troubles pairing your devices, try again after resetting by turning Bluetooth on and off a few times.