

尺寸：208*143 材质：157克双铜纸 规格：双面印

However, there is no guarantee that interference will not occur in a particular installation. If this equipment does cause harmful interference to radio or television reception, which can be determined by turning the equipment off and on, the user is encouraged to try to correct the interference by one or more of the following measures:

- Reorient or relocate the receiving antenna.
- Increase the separation between the equipment and receiver.
- Connect the equipment to an outlet on a circuit different from that to which the receiver is connected.
- Consult the dealer or an experienced radio/TV technician for help.

Certification Information

FCC Regulations
This device complies with Part 15 of the FCC Rules. Operation is subject to the following two conditions:
(1)This device may not cause harmful interference, and;
(2)This device must accept any interference received, including interference that may cause undesired operation.



Changes or modifications not expressly approved by the party responsible for compliance could void the user's authority to operate the equipment.

RF Exposure Information(SAR):
The FCC's SAR limit is 1.6 W/kg. The maximum SAR value when tested for body use is 0.99 W/kg. Testing was conducted at 0 mm distance, and the device meets RF exposure requirements.

CPC:
ASTM F963:
CP65:

Disclaimer and Limitation of Liability

Think Academy and its suppliers shall not be responsible for any damage or loss resulting from the use of this handbook, except as required by applicable law. Think Academy and its suppliers disclaim any liability for any loss or claims by third parties that may arise from the use of this software. In no event shall Think Academy and its suppliers be liable for any indirect, special, incidental, or consequential damages arising out of or in connection with the use or performance of the product, even if they have been advised of the possibility of such damages. Please ensure to back up important data on other media to prevent data loss.

Guangdong Hengqin Xingtong Technology Co., Ltd.
Room 1306, No. 8 Yanghuan Road, Hengqin New District, Zhuhai City, Guangdong Province
Email: service@thethinkacademy.com

Quick Reference Guide



Thinkpal Tablet Keyboard Case K1

Introduction

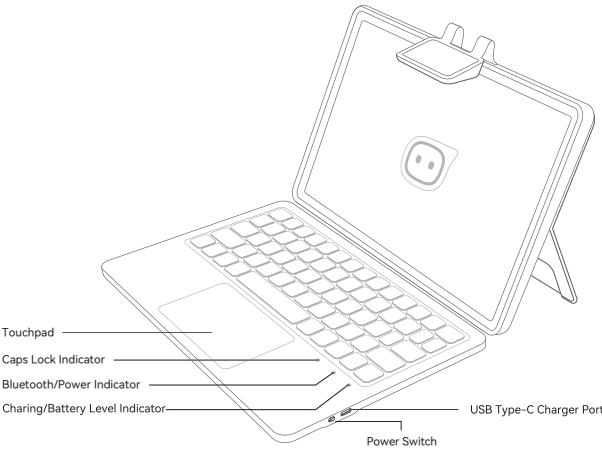
Thank you for choosing the Thinkpal Tablet Keyboard Case K1. To ensure optimal performance and safety, please read this reference guide carefully before operating the product. It is strongly recommended that you keep this reference guide for future reference.

In the Box

Tablet Keyboard Case, Quick Reference Guide.

About Your Product

Please refer to the steps in the figure below to use the tablet keyboard case for the support function. The support angle is approximately 65°±3°. The upper keyboard cover of the tablet keyboard case has a magnetic function that interacts with the screen. It supports automatic screen activation when opening the cover and screen deactivation when closing the keyboard cover.

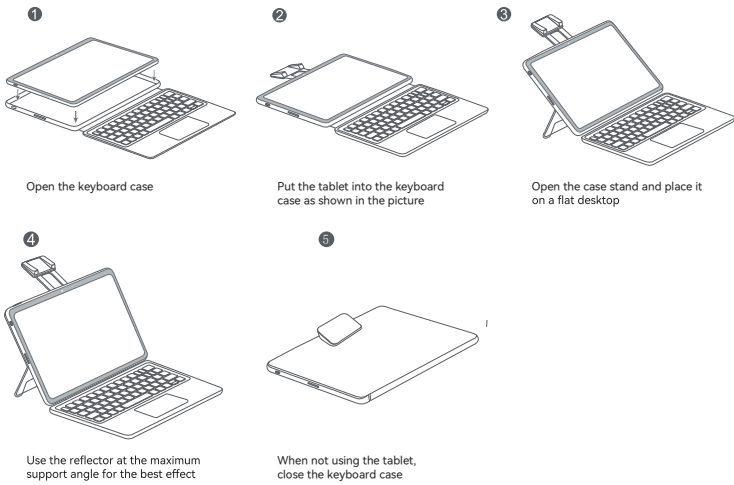


Product Specifications

1. Standard USB-C interface
2. Operating distance up to 10 meters
3. Operation voltage: 3.0-4.2V

4. Standby time: >550 days
5. Charge time: <4 hours
6. Uninterrupted working time: >180 hours
7. Lithium battery specification: 500mAh
8. Keying force: 60±10g
9. Keying life: 3 million strokes

Install



Safety Caution

1. Keep the item away from sharp objects.
2. Do not place heavy object on the keyboard.
3. Away from microwave items.
4. Do not force or distorted the keyboard.
5. Keep away from oil, chemical or other organic liquid.

Getting Started Guide

1. Power Switch



OFF/ON Slide Switch is located next to the charging port, which is situated on the side of the keyboard. Slide the switch to the ON or OFF position to control the device's power, turning it on or off as needed.

2.Steps of Pairing the Keyboard with Your Device

1. Turn the power switch to the ON position. The Bluetooth indicator (blue) will illuminate for one second, signaling that the keyboard is powering on. The Bluetooth indicator will then alternate between flashing blue and red, indicating that it has entered pairing mode.
2. Activate the Bluetooth search function on the main device and search for the pairing name.
3. Once you locate the "Thinkpal Tablet Keyboard Case K1", click on the pairing name to connect the keyboard.
4. If the connection is successful, the Bluetooth indicator (blue) will illuminate for five seconds before turning off.
5. If the connection fails, the Bluetooth indicator (red) will remain lit for thirty seconds before turning off. At this point, press and hold "Fn + [Esc]" to re-initiate pairing and enter pairing mode.

NOTE:
1. After the keyboard is paired with the main device, there is no need to pair it again. When you turn on the power switch, the keyboard will automatically connect to the main device.
2. When the Bluetooth connection is successful, press and hold the "Fn + [Esc]" to disconnect the keyboard from the device and re-enter pairing mode. At this point, you can switch between device connections.

3.Charge the Battery

Turn on the power switch; the Bluetooth indicator (blue) will illuminate for one second and then turn off to conserve power. Your keyboard remains powered on. If the battery level indicator continues to blink red, it means the battery is low, and you need to charge the keyboard using the steps below:
1. Connect the charger and data cable provided with the main device to the keyboard.
2. Plug the charger into a wall outlet.
3. The charging indicator will display a solid red light while charging; once fully charged, the right indicator will turn off.

NOTE:
1. When not in use for an extended period, it is advisable to turn off the keyboard to prolong battery life.
2. When the battery level indicator flashes, it is recommended to charge the keyboard for no less than 4 hours.

4. Energy-Saving Sleep Mode

The keyboard's long-lasting battery can last for several months with normal use. If left on and not in use, the keyboard will enter sleep mode. To wake it up, simply press any key and wait one second or two.

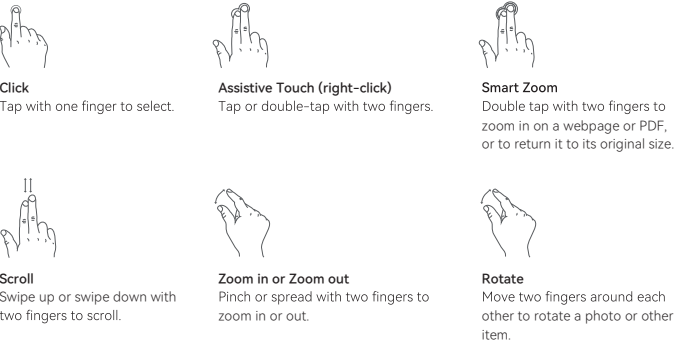
5. Caps Lock Indicator (White):

Caps Lock status light will remain illuminated.

Keyboard Shortcuts and Function Keys

1. Long press the Fn+C key to enter pairing mode. The Bluetooth keyboard can be paired through the system settings.
2. Press the Home key, the device system will return to the home screen.
3. When the device is in sleep mode, pressing any key on the keyboard will wake up the device and turn on the display.

Schematic Diagram of Touchpad Functions



Cleaning

Clean the keyboard with water, alcohol or alcohol based disinfectant.

Troubleshooting

1. Ensure that the power switch is turned on. The power switch is located on the side of the keyboard, next to the charging port.
2. Verify that the battery is charged.
3. Confirm that Bluetooth is enabled on the main device.
4. Ensure that the wireless keyboard is already paired with the main device.

This symbol on your tablet, the battery, and the accessories means that these products must be taken to collection points at the end of their life:
-Municipal waste disposal centers with specific bins for these types of equipment.
-Collection bins at points of sale.
They will then be recycled, preventing harmful substances from being disposed of in the environment, and allowing their components to be reused.



Regulatory Information

FCC Compliance Statement:
NOTE: The following statement applies to all FCC-approved products.Applicable products have the FCC logo on the product label and/ or an FCC ID in the format FCC ID: 2BLKHK1.This equipment has been tested and found to comply with the limits for a Class B digital device, pursuant to part 15 of the FCC Rules. These limits are designed to provide reasonable protection against harmful interference in a residential installation. This equipment generates, uses and can radiate radio frequency energy and, if not installed and used in accordance with the instructions, may cause harmful interference to radio communications.