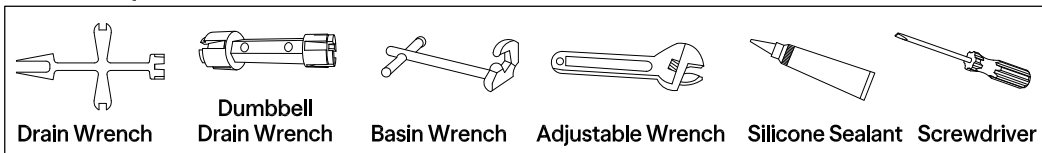
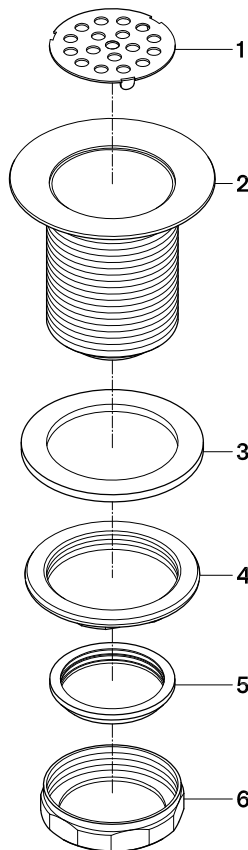


Tools Required



Installation Step:

1. Clean area around the sink drain hole and apply a bead of silicone based caulking to the underside of the drain flange and insert into drain hole from the top.
2. From below the sink slide rubber washer up onto the drain threads until it comes in contact with the sink.
3. Thread locknut by hand, make sure the drain is centered on the sink drain hole and tighten lock nut using a basin wrench, be careful not to overtighten especially if it is being installed on a porcelain or fireclay sink.
4. Secure the "P" trap to the drain using the provided compression nut and rubber gasket.



NOTICE

Failure to follow all directions may cause leaks
which may result in water damage

www.kingstonbrass.com

TOLL-FREE CUSTOMER SERVICE: 1-877-2-KBRASS
TECHNICAL SUPPORT E-mail: service@kingstonbrass.com
12775 Reservoir Street, Chino, CA 91710