

FINVIE

Refrigerator Water Filter

USER'S MANUAL



FIN-25

REPLACES FILTERS:

LG LT1000P

ADQ74793501

PART 1

FINVIE OVERVIEW

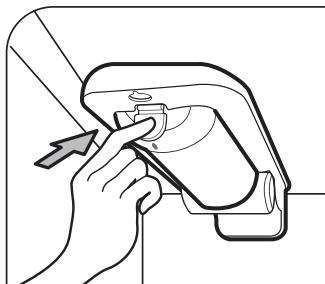
FINVIE is top quality brand of water filter, our manufacturer is one of only two companies' export filters have passed NSF certification, we have top production technology and professional machine, adopt the better materials into the filters for great filtration effect.

1. Adopt Sri Lanka High quality activated carbon, provide better effect of filtration and environment-friendly and resource-efficient.
2. Filter shell plastic is made of high purity polyethylene from Germany, lighter and stable.
3. The glue comes from LG in Korea, which ensures that the size of each honeycomb hole is uniform for ensure the filtering effect.

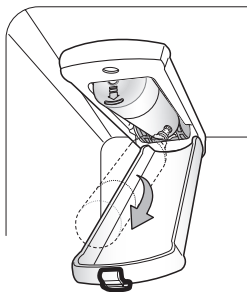
PART 2

INSTALLATION INSTRUCTIONS

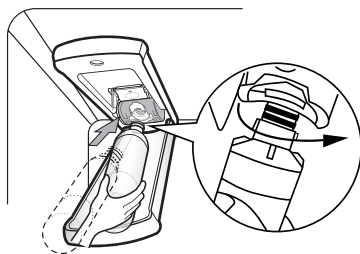
1. Please put down the top shelf and Press the push button to open the water filter cover.



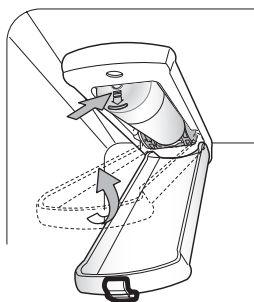
2. Rotate the filter down completely then pulling it out of the filter head, remove the old water filter.



3. Take out the new filter and remove the protective cover from the o-rings. With the water filter tabs in the horizontal position, push the new water filter into the filter head and turn to clockwise.



4. Rotate the water filter up into position and close the cover. The cover will click when closed correctly.



NOTE

Do not dispense the entire 2.5 gallon amount continuously. Press and release the dispenser pad for cycles of 30 seconds ON and 60 seconds OFF.

PART 3

WARNING!

To reduce the risk associated with choking, do not allow children under 3 years old to have access to small parts during the installation of this product.

NOTICE

To reduce the risk associated with property damage due to water leakage:

1. Read and follow use instructions before installation and use of this system.
2. Installation and use must comply with all state and local plumbing codes.
3. Do not install if water pressure exceeds 100 psi (6.8 bar). If your water pressure exceeds 60 psi (4.1 bar), you must install a pressurelimiting valve. Contact a plumbing professional if you are uncertain how to check your water pressure.
4. Water hammer conditions exist you must install a water hammer arrester. Contact a plumbing professional if you are uncertain how to check for this condition.

5. Do not install on hot water supply lines. The maximum operating water temperature of this filter system is 100° F.
6. Contact a plumbing professional if you are uncertain how to select/install/maintain a pressure regulating valve.
7. The disposable filter cartridge should be replaced every 3-6 months at the rated capacity, or sooner if a noticeable reduction in flow rate occurs.

Compatible Model:

LG LT1000P, LT1000PC, LT1000PCS, LT-1000PC, MDJ6484460I, ADQ747935, ADQ7479350I, ADQ74793502
Kenmore 46-9980 , 9980, 469980

Compatible LG Refrigerators:

The LG LT1000P Replacement Refrigerator Water Filter (part# ADQ747935) is compatible with the following select LG InstaView Door-in-Door & Side-By-Side Refrigerators:

LFCC22426S, LFCS28768S, LFXC22526S, LFXC22596S, LFXC24796D, LFXC24796S, LFXS26566M, LFXS26566S, LFXS26596M, LFXS26596S, LFXS26973D, LFXS26973S, LFXS28566, LFXS28566D, LFXS28566M, LFXS28566S, LFXS28596D, LFXS28596M, LFXS28596S, LFXS28968, LFXS28968D, LFXS28968S, LFXS30796D, LFXS30796S, LMXC23796D, LMXC23796M, LMXC23796S, LMXS28626, LMXS28626D

PART 4

FQAS

Q: Does it have NSF standards?

A: Yes, it has NSF 42 standards. Throughout China, only two companies' export filters have passed NSF certification. We are one of them, and we can provide a real certificate. You can cut the filter directly and you can see the internal structure and the extra-large area of coconut shell activated carbon.

Q: After installed, Sometimes the water output in the water/ice dispenser to be much slower than previous?

A: On the one hand, slow water flow is good for filtering out more impurities in water. The water flow is fast and helps bacteria and microorganisms break through the filter.

On the other hand, one should be mindful of any water main work which might be done in the street, as the particulates and sediment released when the pipes are disturbed can get into your filter through the water system. This may cause it to clog somewhat and affect the longevity of the filter.

Q: How long does it take to replace?

A: It usually is replaced every 3-6 months or 200 gallons. For the best filtration results, we recommend that it be replaced every 3 months. Because the microorganisms intercepted by water filtration will parasitize in the filter element, it will be better to replace the filter element in time. However, if you still have any questions, please do not hesitate to inform us and we will reply you within 10 hours.