

# HOW TO USE LEXIN-G16

USER GUIDE



Motorcycle Bluetooth Intercom

**LEXIN**





# Table of Contents

P01 [Download User Manual Online](#)

P02 [Watch Instruction Video Online](#)

P03 [Function Introduction](#)

P05 [Package Contents](#)

P06 [Installation Instructions](#)

P09 [General Operation Instructions](#)

P18 [Maintenance & Certification](#)



## Download User Manual Online

### English

★- For Online User Manual in English, Spanish, German, Italian, French, Japanese... Visit **www.lexin-moto.com**, Go to Support - User Manual, and select "G16".

---

### Français

★- Pour obtenir un mode d'emploi en Anglais, Espagnol, Allemand, Italien, Français Japonais en ligne... Accédez à **www.lexin-moto.com** et trouvez-les sur Support - User Manual, puis sélectionnez "G16".

---

### Italiano

★- Per il Manuale Utente Online in Inglese, Spagnolo, Tedesco, Italiano, Francese, Giapponese... Visita **www.lexin-moto.com**, vai su Support - User Manual, e seleziona "G16".

---

### Deutsch

★- Online Bedienungsanweisung auf Englisch, Spanisch, Deutsch, Italienisch, Französisch, Japanisch usw., besuchen Sie **www.lexin-moto.com** gehen Sie zur Unterstützung - Bedienungsanweisung, dann wählen Sie "G16".

---

### Español

★- Para el Manual del Usuario en Línea en Inglés, Español, Alemán, Italiano, Francés, Japonés... Visite **www.lexin-moto.com**, vaya al Soporte - Manual de Usuario, y seleccione "G16".



## Watch Instruction Video Online

### English

★★ - Subscribe to our Youtube channel **@lexinmoto**, and find “G16” Instruction videos.

---

### Français

★★ - Suivez notre chaîne Youtube **@lexinmoto**, Et trouvez les vidéos “G16” Instruction.

---

### Italiano

★★ - Iscriviti al nostro canale Youtube **@lexinmoto**, e trova i video di “G16” Instruction.

---

### Deutsch

★★ - Abonnieren Sie unseren YouTube-Kanal **@lexinmoto** und suchen Sie das Video “G16” Instruction.

---

### Español

★★ - Regístrese nuestro Youtube channel **@lexinmoto**, y encuentre videos “G16” Instruction. Finden Sie das Video “G16” Instruction.



## Function Introduction

Thank you for choosing the G16 Motorcycle 16-Way Bluetooth Conference Intercom.

- Bluetooth 5.0
- Hands-free calling
- Hands free headlamp
- Built-in CVC/DSP noise reduction
- Type C USB quick charge equipped
- Supports voice prompts, power voice announcement
- Supports universal pairing with most Bluetooth Intercom
- Support 1-16 G16 devices connection, the best intercom distance is 4.5 kilometers/2.8 miles.
- Connect to GPS Navigation
- Plays music and FM Radio
- Equip 2 kinds of mounting brackets
- Support Siri and other voice assistants

### **The G16 is compliant with Bluetooth Specification V5.0 supporting the following profiles:**

Headset Profile (HSP), Hands-Free Profile (HFP), and Advanced Audio Distribution Profile (A2DP). It supports universal pairing with almost all Bluetooth headsets on the market.

### **Speakers**

HD 40MM stereo helmet speakers and headset(s) included. These are designed for installation into most open face, modular, and full-face style helmets. Superior audio fidelity has been achieved with our high quality, non-ported, and ultra-slim helmet HD speakers. This headset also provides the industry's best combination of wind and ambient noise reduction with the included microphone(s), we use CVC and built-in DSP noise reduction.

### **Battery**

The G16 features an 800 mAh battery which can provide the intercom device with 15 hours of music or 15 hours of intercom talk with over one week of standby time.



**Function Priority:** (The G16 operates in the following order of priority)

- 1.Mobile phone
- 2.Intercom Talk
- 3.Music/FM Radio/GPS

**Note:** A lower-priority function is always interrupted by a higher-priority function. For example, stereo music can be interrupted by an intercom call, intercom talk can be interrupted by an incoming phone call.

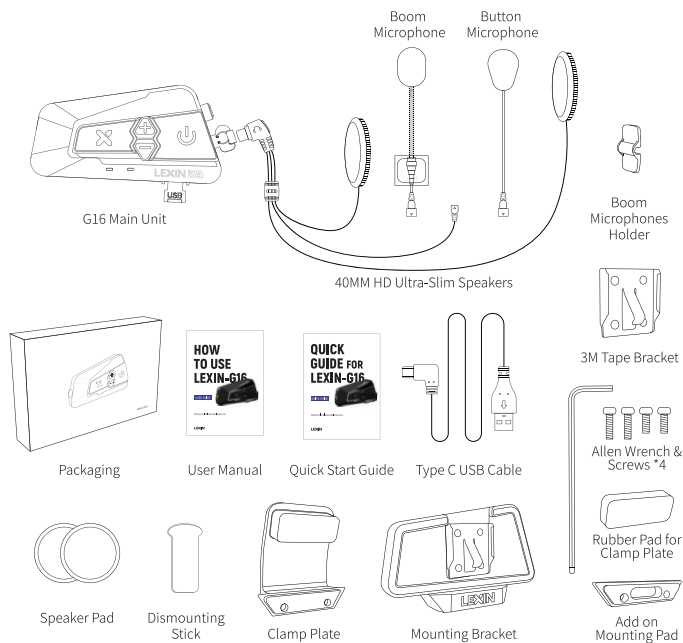
#### **WARNING**

PLEASE CHECK ALL LOCAL LAWS AND REGULATIONS REGARDING THE USE OF IN-HELMET SPEAKERS WHILE OPERATING MOTORIZED VEHICLES.



## Package Contents

- G16 Main Unit
- 40MM HD Ultra-Slim Speakers
- Boom/Button Microphones
- Boom Microphone Holder
- Mounting Bracket
- Clamp Plate
- Add on Mounting Pad
- 3M Tape Bracket
- User Manual/Quick Start Guide
- Type C USB Cable
- Speaker Pad
- Allen Wrench & Screws \*4
- Rubber Pad for Clamp Plate
- Dismounting Stick





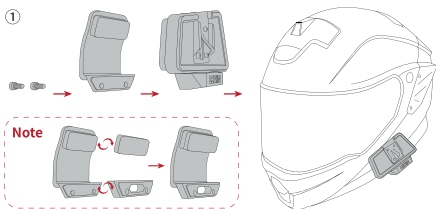
## Installation Instructions

### Installing Bracket for G16 to Helmet

#### ① With Screws

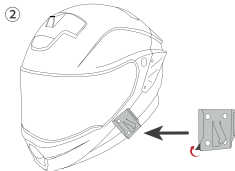
Mount the bracket between the internal padding and external shell of the helmet. Tighten the two screws between the bracket and Mounting Pad by using the included Allen wrench.

**Note:** Depending on the size and shape of your helmet, you may need to add an extra rubber pad which is between the clamp plate. You can find an extra rubber pads in the box. To increase the overall thickness,



attach another pad to the original rubber pad.

In the same way, we can increase the thickness of the other side of the clamp plate with the Add on Mounting Pad, and you need to use the longer screws to install it on helmet.



#### ② With Adhesive Pad

If you don't want to use clamp plate mounting bracket or you have some problems with using it, you can use the 3M tape bracket to adhere it onto the helmet. Just peel off the protective backing sheet of the 3M tape bracket and adhere the bracket onto the helmet. Press for 15s and allow the glue dry for 24 hours.

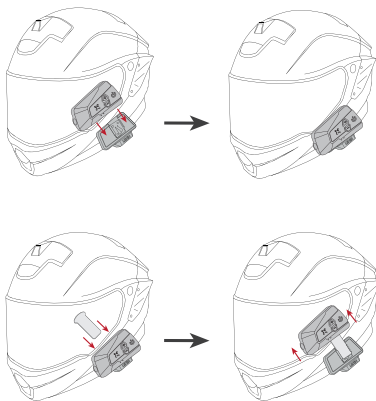
**Note:** Even though the 3M Tape bracket is provided for convenience, LEXIN recommends using the bracket mounting. The 3M Tape bracket is offered as an option that you may use at your own risk and responsibility, LEXIN does not assume any responsibility for use of it.



### Mounting the G16 Unit to Bracket

Mount the G16 main unit on the bracket. Slide the main unit down onto the bracket until it clicks firmly into the bottom portion of the bracket.

To remove the main unit from the bracket, use the Dismounting Stick to insert it between G16 unit and the mounting bracket, then push the G16 main unit up from the bracket.



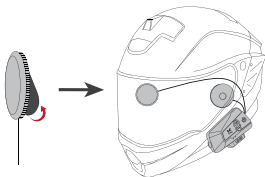
### Installing Speakers

**Note:** The speaker with the shorter wire is for the left ear and the speaker with the longer wire is for the right ear, this will enhance the FM radio reception as well.

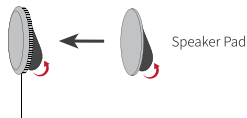
**Step 1:** Place the one half of the speakers velcro pad into the helmets inner padding.

**Step 2:** Push the speakers firmly against the velcro pads. If the helmet has deep ear pockets, you can use the provided spacers to place the speakers closer.

**Step 3:** Hide the wires between the helmet liner and shell.



**Note:** We equipped with extra speaker pads, there may be some helmets with deep speaker pocket, so you can add the extra speaker pads to increase the thickness of the speakers to make the speakers closer to you ears.

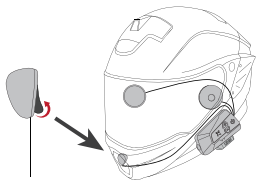


### Installing Microphone

**Note:** The button microphone and boom microphone can be interchanged between full face or open face helmet. Choosing between the two is based on your preference and what fits best in the helmet(s).

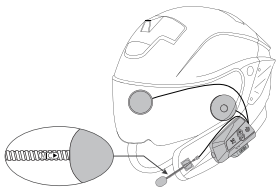
#### Full Face Helmet/Button Microphone

- Step 1:** Locate an area in the center of the mouth section of the helmet to install and adhere half of the microphone velcro pad.
- Step 2:** Attach the button microphone to the attached velcro.
- Step 3:** Connect it to the headphone connector from the left.



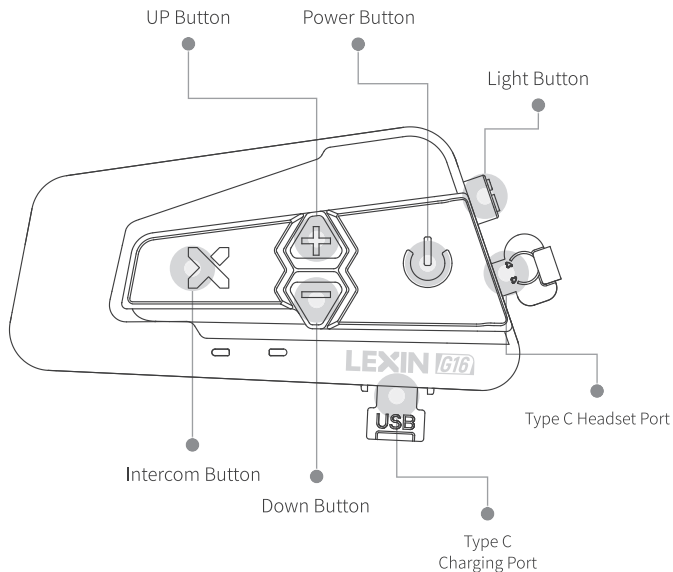
#### Open Face Helmet/Boom Microphone

- Step 1:** Adhere one half of the velcro pad to the base of the microphone and the other half to inside of the helmet under padding.
- Step 2:** Adjust the direction of the microphone so that the triangular mark on the microphone is pointing towards your mouth.
- Step 3:** Use the boom microphone holder for additional support to the microphone if necessary.





## General Operation Instructions



### Powering On/Off

**Power On:** Long press the Power Button and Intercom Button for about 1s to power on. The LED will blink blue only. Voice report “Power on” and the current battery life.

**Power Off:** Long press the Power Button and Intercom Button for about 1s to power off. The LED will blink red only. Voice prompt “Power off”.



## Battery

**Charging:** Plug the micro USB cable into Type C port to charge by any DC 5V power supply, such as mobile phone charger, computer, laptop or power bank, Etc. The LED turns **red** while charging, and then turns **blue** when the main unit is fully charged. It takes about 3 hours to be completely charged.

**Low Battery Alert:** The device will notify you when the battery life drops low (below 30%). It will remind you every 5 minutes with a voice alert until the device powers off. This indicates around 1-1.5h of use remains. It will automatic shutdown when the battery is below 20%.

**Battery Life Prompt:** Every time you turn on the unit, it will automatically report the current battery life.

While in standby mode, long press the Down Button for about 1s, the G16 device will prompt the current battery life.

**Note:** It will report one of five levels: 100%, 80%, 50%, 30%, LOW.

## Pairing G16 with Bluetooth Devices

**Note:** A single G16 can be connected with up to three different Bluetooth devices at once. It can automatically connect to your last paired device as long as Bluetooth is enabled or when the device is not connected and is in standby mode, click the Power Button to connect to the Bluetooth device.

### Pairing Phone

Step 1: While Powered off, long press the Power Button for about 5s until the LED light flash blue and red alternately to enter pairing mode;

Step 2: Go to Bluetooth settings on your phone. Select "LX-G16", Some mobile phone may need PIN. Enter "0000" for the PIN if needed;

Step 3: Please confirm in your phone if the pairing is complete;

**Note:** The LED will blink blue on G16 device which indicate the connection is complete.

### Pairing Bluetooth GPS Navigation

Step 1: While powered off, long press the Power Button for about 5s until the LED light flash blue and red alternately to enter pairing mode;

Step 2: Follow pairing instructions for your specific GPS Navigation to connect to G16;

**Note:** You will be able to listen to Bluetooth voice instructions from Bluetooth GPS navigation once paired.



### Volume and Music Controls

**Volume Up/Down:** Long Press the Volume Up or Down Button, and it will prompt both when volume maximum and minimum.

**Pause/Play:** Click the Power Button to pause a song, click the Power Button again to resume playing.

**Change Song:** Double click the Up Button for next song, double click the Volume Down Button for the previous song.

**Music Sharing:** A G16 device (A) that is playing music can share music to another G16 device (B). When device A is playing music, double click Power Button on device A to enter music sharing mode. Then make sure device B is in standby state, double click Power Button on device B to search and connect device A, it will play the same music automatically once connected.

**Stop Music Sharing:** To quit music sharing mode, double click Power Button on either G16 device.

### Phone Calls

**Answer Call:** Click the Power Button to answer when phone call is coming.

**Auto Answer:** Answer the incoming call automatically within 12s when phone call is coming.

**Preset On/Off Automatic Answering:** With power on state, long press the Up Button for about 5s, the blue light flashes 3 seconds, indicating that automatic answering is on, or the red light flashes 3 seconds, indicating that it is off.

**End Call:** Click the Power Button to end the call.

**Decline Call:** Double click the Power Button to reject the call.

**Redial:** When in standby mode, double click the Up Button, the last phone call will redial.

**Voice Dial:** While the device was paired with your phone, double click the Down Button to activate Siri or S-Voice. Simply speak the name from your phone list to dial.



## FM Radio

### On/Off:

Turn On FM Radio: Long press Power Button for about 1s to enter radio function.

Turn Off FM Radio: When in radio opening state, Long press Power Button for about 1s to end radio function.

### FM Radio Station Search:

Turn up: Double click the Down Button, the voice prompt will adjust the radio station upwards.

Turn down: Double click the Up Button, and the voice prompt will adjust the radio station downward.

**Store up to 6 FM Radio Stations:** In FM radio mode, when a favorite station is found, double click the Power Button to save it and there will be a tone to prompt. Support storing up to 6 FM radio stations. Once 6 stations have been saved, saving a new station will overwrite the oldest saved station. Click the Power Button to cycle through the saved station.

## Headlamp

### Turn On/Off

Activate or deactivate by clicking the Light Button.

### Emergency SOS Strobe

Long press the Light Button for about 6s to activate or deactivate strobe.

## Universal Pairing

### To enter pairing mode

Step 1: With power on state, long press the Intercom Button for about 1s until the LED begins flashing blue and red alternately;

Step 2: Follow your other Bluetooth device pairing instructions to enter pairing mode;

Step 3: Click the Intercom Button on G16 to search the other device and the LED light will flash blue and red quickly. After the pairing is complete, the LED light returns to the blue light flashing slowly;

Step 4: To initiate universal intercom, click the Up Button and Down Button together to initiate intercom talk;

Step 5: Click the Power Button to end the intercom talk.



### Intercom Connection

G16 Bluetooth headsets uses full-duplex Bluetooth intercom talk, pairing group internal intercom, divided into 4-way intercom mode and multi-way intercom mode, multi-way intercom mode can achieve up to 16 riders to be connected.

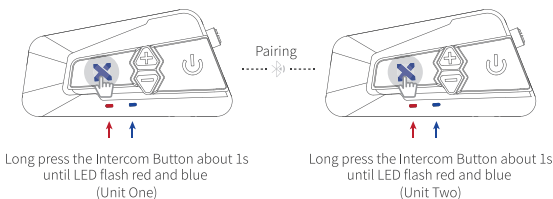
**Note:** Prior to pairing units for communications before riding, we strongly suggest that existing connections be cleared from unit. To clear existing connections, long press the Up and Down Button together for about 1s until the red LED flashes quickly, all previous connections will be cleared from the unit.

Every time you turn on the G16 device, the default is 4-way intercom mode, and to switch into the multi-way intercom mode which is for more than five riders (including five riders), in the standby state, you need to long press Power Button for about 8s, there will be a beep and the indicator light flashes red quickly at the same time.

There is no memory function for this operation, the default 4-way intercom mode is used every time you turn on the device, and you need to long press the Power Button for about 8s to switch it into multi-way intercom mode every time when you need it. For the 4-way intercom pairing method, please refer to the first four pairing operation methods of group intercom pairing.

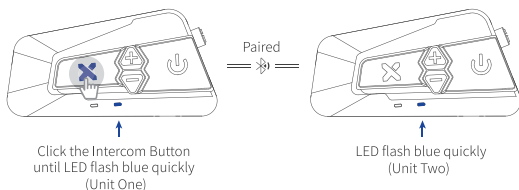
### Group Intercom Connection

**Step ① (2-Way Pairing) :** Use the Intercom Button to pair 2 G16 devices  
Power on two G16 units. Long press the Intercom Button on both two units about 1s. LED of both two units will flash red and blue alternately which indicate they enter pairing mode.



Click the Intercom Button on either unit to search and pair the other unit, the LED light flash blue quickly. Once pairing is complete, the LED will blink blue slowly on both two units.



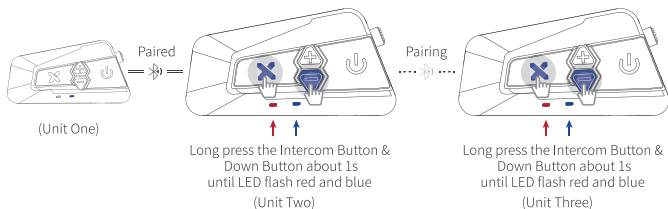


After pairing is complete, LED of both two units will flash blue slowly and voice prompt pairing completed.

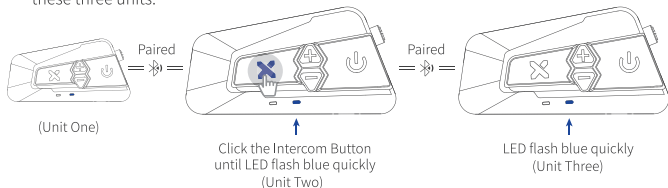
**Note:** If you only need to pair two G16 devices, you only need to complete **Step ①**, you can ignore the following steps and skip to Page 16 on how to start intercom talk.

**Step ② (3-Way Pairing) :** Use the Intercom Button and Down Button to pair the third G16 device.

Power on both the second G16 unit and the third G16 unit. Long press the Intercom Button and Down Button on both two units about 1s. The LED of both two units will flash red and blue alternately which indicate they enter pairing mode.



Click the Intercom Button on either unit to search and pair the other unit, the LED light flash blue quickly. Once pairing is complete, the LED will blink blue slowly on these three units.



After pairing is complete, LED of these three units will flash blue slowly and voice prompt pairing completed.

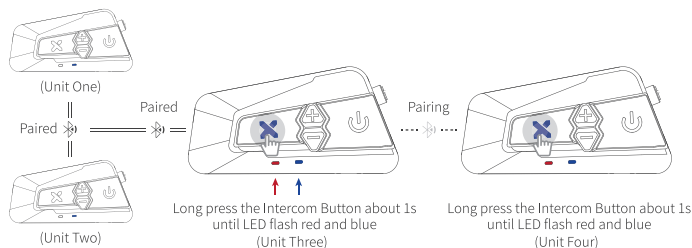


### Step③(Group Pairing): Pairing over 3 G16 units.

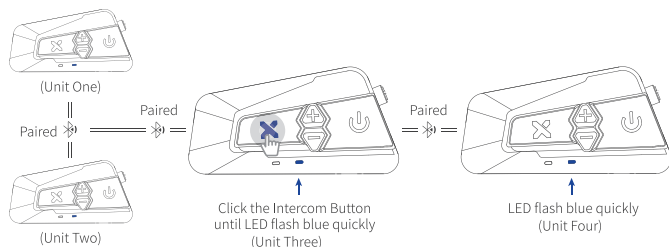
Repeat **Step ①** and **Step ②**.

**For example:** To add the fourth unit

You need to have the third G16 unit and the fourth G16 unit to repeat **Step ①**: Long press Intercom button about 1s on both unit to pair.



Click the Intercom Button on either unit to search and pair the other unit, the LED light flash blue quickly. Once pairing is complete, the LED will blink blue slowly on these four units.

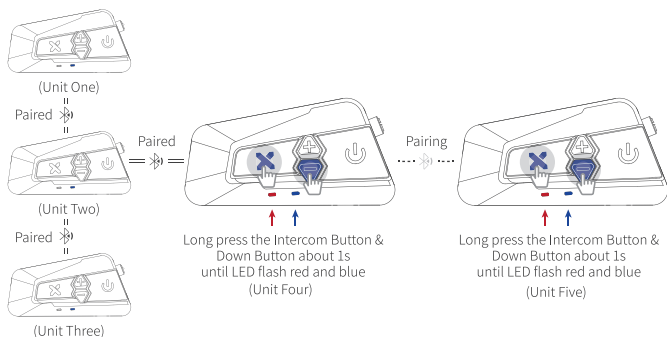


After pairing is complete, LED of these four units will flash blue slowly and voice prompt pairing completed.

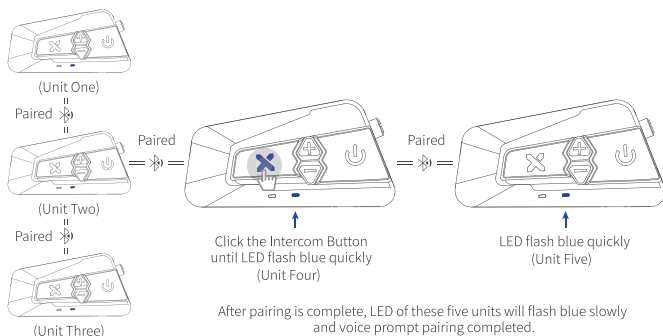


To add the fifth G16 unit:

the fourth G16 unit and the fifth G16 unit repeat **Step ②**: Long press the Intercom Button and Down Button about 1s to pair.

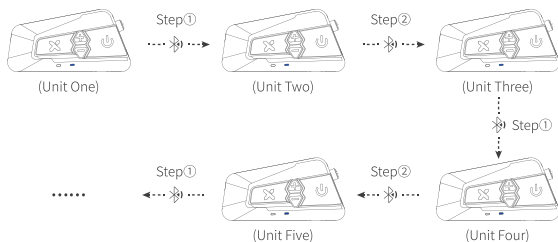


Click the Intercom Button on either unit to search and pair the other unit, the LED light flash blue quickly. Once pairing is complete, the LED will blink blue slowly on these five units.





To add more units to the group, simply repeat the above steps to pair one by one.



**Note:** Each G16 device can only be paired with two other G16 devices at the same time, that means, we pair the unit one after another in series to realize multiple group connections. For example, if unit three is paired with unit two and unit four, and it will not be able to pair with other devices.

**Start a Two Way Intercom Talk:** After completing the pairing, click the Intercom Button on one of the two units to start an intercom talk. When in intercom mode, the LED light will blink blue and red simultaneously. Click the Power Button to make the device temporarily disconnect the current intercom; Click the Intercom Button again to resume the intercom talk.

**Start an Group Intercom Talk:** After completing the multiple units pairing, click the Intercom Button on anyone of all paired units to start the group intercom talk. When in intercom mode, the LED light will blink blue and red simultaneously. Click the Power Button to make the device temporarily disconnect the current intercom; Click the Intercom Button again to resume the intercom talk.

**Join Group Intercom:** When the unit is in standby mode, click the Intercom Button to join the ongoing intercom group.

**Note:** The intercom talk in the group will be divided into 2 separated intercom groups from the disconnected unit if it is disconnected.

**Clear The Pairing:** Long press Up and Down Button at the same time for about 1s to clear the pairing, the red light will flash quickly.



## Maintenance & Certification

### **Maintenance and Care**

**The G16 should be treated with care and the following suggestions will help maintain your Warranty:**

- Do not use or store the device in dusty or dirty environments. Moving parts and electronic components can be damaged.
  - Do not store the device in high heat areas. High temperatures can shorten the life of electronic devices, damage batteries, and warp or melt certain plastics.
  - Do not store the device in cold temperature areas. When the device returns to its normal temperature, moisture can form inside the device and damage electronic circuit boards.
  - Do not attempt to open the G16 case.
  - Do not drop or knock the device. Rough handling can break internal circuit boards and fine mechanics.
  - Do not use harsh chemicals, cleaning solvents, or strong detergents to clean the device.
  - Do not paint the device. Paint can clog the moving parts and prevent proper operation.
- These suggestions apply equally to the headset main unit, speaker-microphone clamp unit, and power charger.

### **Warranty**

LEXIN warrants that this product shall conform to and perform in accordance with published technical specifications and the accompanying written materials, and shall be free of defects in materials and workmanship, for a period of one year from the date of purchase by the first consumer purchaser of the Product. The limited warranty extends only to the original consumer purchaser of the Product and is not assignable or transferable to any subsequent purchaser/end-user.

This warranty is limited to the repair or replacement, at LEXIN's discretion, of defective or non-conforming Product, and LEXIN shall not be responsible for the failure of the Product to perform specified functions, or any other non-conformance caused by or attributable to: (a) any misapplication or misuse of the Product; (b) failure of Customer to adhere to any of LEXIN's specifications or instructions; (c) neglect of, abuse of, or accident to, the Product; or (d) any associated or complementary equipment or software not furnished by LEXIN. Limited warranty service may be obtained by delivering the Product to LEXIN or to the international distributor it was purchased through and providing proof of purchase or receipt date. Customer agrees to insure the Product or assume the risk of loss or damage in transit, to prepay shipping charges to LEXIN, and to use the original shipping container or equivalent.



### Waivers and General Release

By using the Product, you will waive substantial legal rights including, the right to use. Please read the following carefully before using the device. By using the Product, you agree to this agreement and forfeit the right to pursue legal action.

By using the Product, you are irrevocably releasing, indemnifying from any liability, loss, claim and expense (including attorney's fees) and holding LEXIN harmless for any bodily injuries, harm or death as well as losses or damages in goods, to any vehicles including your own, or to any property or asset that belong to you or to third parties, any of which may result from using the Product under any circumstances or conditions and irrespective of jurisdiction.

You, your heirs, legal representatives, successors or assigns, hereby voluntarily and forever release, discharge, indemnify and hold harmless LEXIN from any and all litigation, claims, debts, demands, actions and liability which may arise, directly or indirectly, from using the Product for any distress, pain, suffering, discomfort, loss, injury, death, damages to or in respect to any person or property however caused, WHETHER ARISING FROM THE NEGLIGENCE OR OTHERWISE, and which may hereafter accrue to you on some future date as a result of said use, to the fullest extent permitted by law.

You fully understand and assume the risks in using the Product, including risk of negligent acts or omissions by others. All risks for operating the Product are assumed solely by the user of the Product.

You confirm that you are physically capable to use the Product and that you have no medical conditions or needs that may infringe upon your abilities to do so in a safe manner. You confirm that you are at least eighteen (18) years of age and that you have been advised of the risks associated with the use of the Product. You further confirm that you will not consume any alcohol that may affect your alertness or any mind-altering substance, and will not carry, use or consume these substances before or during the use of the Product.

You fully acknowledge our warnings and understand that:

- (a) Risks and dangers exist in using the Product while in traffic, including but not limited to injury or illness, strains, fractures, partial and/or total paralysis, death or other ailments that could cause serious disability;
- (b) These risks and dangers may be caused by the negligence of the manufacturers or its agents or any third party involved in designing or manufacturing the Product;
- (c) These risks and dangers may arise from foreseeable or unforeseeable causes.

You hereby assume all risks and dangers and all responsibility for any losses and/or damages, whether caused in whole or in part by the negligence or other conduct of



others, including LEXIN.

By using the Product, you confirm that you have read this release of liability and fully understand and accept its terms and conditions.

### **RF Exposure Information**

NOTE: This equipment has been tested and found to comply with the limits for a Class B digital device, pursuant to part 15 of the FCC Rules. These limits are designed to provide reasonable protection against harmful interference in a residential installation. This equipment generates uses and can radiate radio frequency energy and, if not installed and used in accordance with the instructions, may cause harmful interference to radio communications. However, there is no guarantee that interference will not occur in a particular installation. If this equipment does cause harmful interference to radio or television reception, which can be determined by turning the equipment off and on, the user is encouraged to try to correct the interference by one or more of the following measures:

- Reorient or relocate the receiving antenna.
  - Increase the separation between the equipment and receiver.
  - Connect the equipment into an outlet on a circuit different from that to which the receiver is connected.
  - Consult the dealer or an experienced radio/TV technician for help
- Changes or modifications not expressly approved by the party responsible for compliance could void the user's authority to operate the equipment.

This device complies with Part 15 of the FCC Rules. Operation is subject to the following two conditions:

- (1) this device may not cause harmful interference, and
- (2) this device must accept any interference received, including interference that may cause undesired operation.

This device contains licence-exempt transmitter(s)/receiver(s) that comply with Innovation, Science and Economic Development Canada's licence-exempt RSS(s). Operation is subject to the following two conditions:

- (1) This device may not cause interference.
- (2) This device must accept any interference, including interference that may cause undesired operation of the device.



L' émetteur/récepteur exempt de licence contenu dans le présent appareil est conforme aux CNR d' Innovation, Sciences et Développement économique Canada applicables aux appareils radio exempts de licence. L' exploitation est autorisée aux deux conditions suivantes :

- (1) L' appareil ne doit pas produire de brouillage;
- (2) L' appareil doit accepter tout brouillage radioélectrique subi, même si le brouillage est susceptible d' en compromettre le fonctionnement.



Lexin Electronics Inc  
1(800) 380 - 8248  
[www.lexin-moto.com](http://www.lexin-moto.com)

---

**Backed by 2-Year Warranty**  
**For technical support :**  
[tech@lexinmotorcycle.com](mailto:tech@lexinmotorcycle.com)

---

   @lexinmoto