

Start guide

TomTom 

English | Français

Deutsch | Nederlands

Español | Italiano | Português

3

X

X

English
Français

ENGLISH

Table of contents

Discover TomTom GO Discover	4
Setting a destination	6
Easy updating using Wi-Fi®	10
In-car installation	11
Connecting your phone	12
MyDrive Connect app	15
TomTom Road Trips	20
Questions and feedback	21

FRANÇAIS

Table des matières

Découvrez TomTom GO Discover	4
Configuration d'une destination	6
Mise à jour simple via Wi-Fi®	10
Installation dans le véhicule	11
Connexion de votre téléphone	12
Appli MyDrive Connect	15
TomTom Road Trips	20
Questions et commentaires	21

ENGLISH

Heres to new memories

FRANÇAIS

Plus que de la navigation

ENGLISH

TomTom navigation technology brings the full journey to drivers, riders, truckers, and campers. Start with advanced route planning. Get expert guidance, alerts, and updates along the way. Then take a look back via trip statistics and share your itinerary with friends, coworkers, and the TomTom Road Trips Community. Safer, simpler, and faster, on and beyond the road.

FRANÇAIS

Profitez de la navigation TomTom jusqu'à votre destination. Trouvez l'inspiration, créez votre parcours, puis partagez-le avec vos amis et avec la communauté de conducteurs de TomTom Road Trips. Plus sûr, plus simple et plus rapide, pendant votre trajet et même après.

ENGLISH

Getting to know your TomTom GO Discover

FRANÇAIS

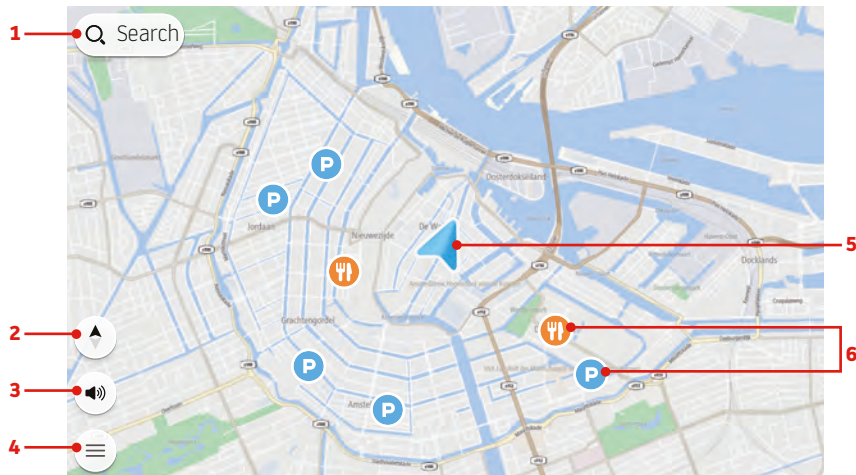
Présentation de votre TomTom GO Discover

ENGLISH

- 1 Search button.
- 2 Switch view button.
- 3 Sounds and Alerts button.
- 4 Main menu button.
- 5 Current location.
- 6 Points of interest and Favourites.

FRANÇAIS

- 1 Search button.
- 2 Switch view button.
- 3 Sounds and Alerts button.
- 4 Main menu button.
- 5 Current location.
- 6 Points of interest and Favourites.

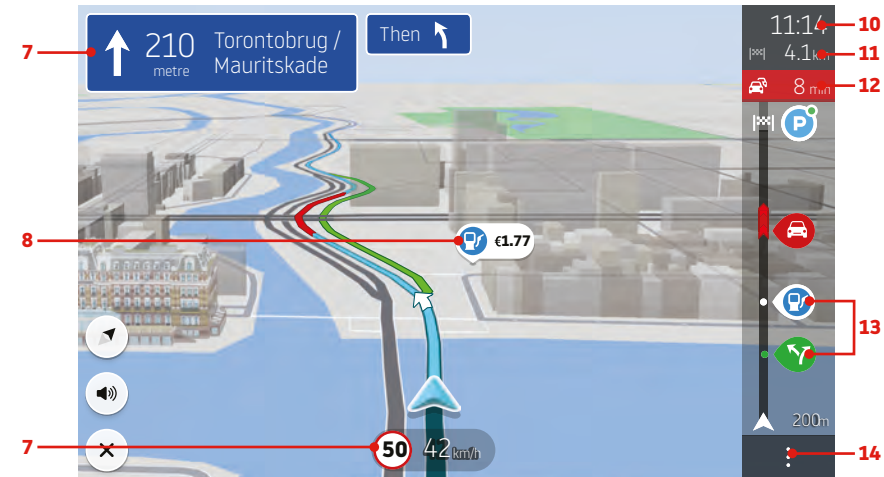


ENGLISH

- 7 Instruction panel.
- 8 Fuel station and price.
- 9 Speed limit and current speed.
- 10 Estimated time of arrival.
- 11 Distance / time to your destination.
- 12 Traffic delays.
- 13 Route highlights.
- 14 Route options button.

FRANÇAIS

- 7 Instruction panel.
- 8 Fuel station and price.
- 9 Speed limit and current speed.
- 10 Estimated time of arrival.
- 11 Distance / time to your destination.
- 12 Traffic delays.
- 13 Route highlights.
- 14 Route options button.



ENGLISH

Setting a destination

FRANÇAIS

Configuration d'une destination

1



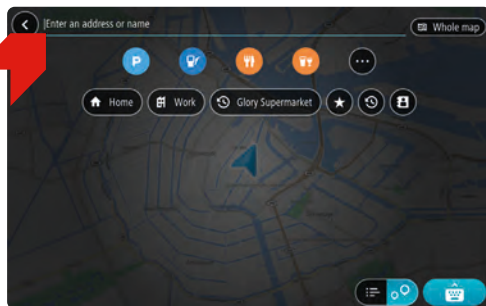
ENGLISH

Tap the Search button.

FRANÇAIS

Touchez le bouton Rechercher.

2



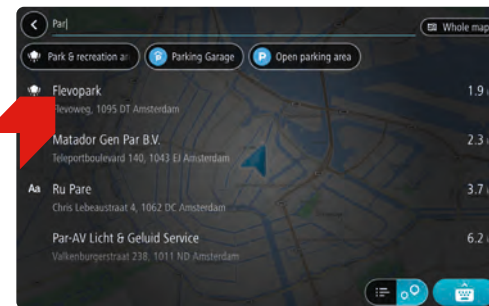
ENGLISH

Enter an address, the name of a place, or the type of place (eg. restaurant).

FRANÇAIS

Saisissez une adresse, le nom d'un lieu ou un type de lieu (par exemple : restaurant).

3



ENGLISH

Tap on a search result to select it.

FRANÇAIS

Touchez un résultat pour le sélectionner.

4



ENGLISH

Tap the Drive button to plan a route.

FRANÇAIS

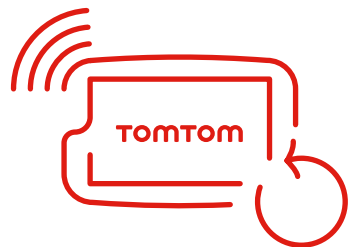
Touchez le bouton Aller pour planifier un parcours.

ENGLISH

Easy updating using Wi-Fi®

FRANÇAIS

Mise à jour simple via Wi-Fi®

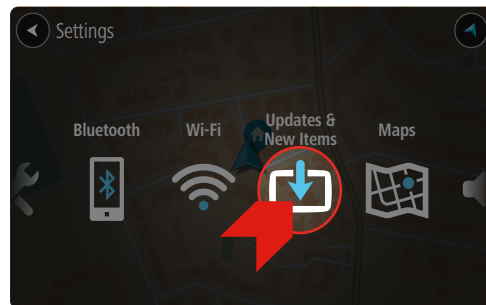


ENGLISH

Use Wi-Fi® to get the latest features, map updates, and QuickGPSfix for your GO Discover. No computer needed!

FRANÇAIS

Utilisez une connexion Wi-Fi® pour recevoir les dernières fonctionnalités, les mises à jour de carte et bénéficier de QuickGPSfix sur votre GO Discover. Plus besoin d'ordinateur !



ENGLISH

To get updates, open the main menu. Tap Settings, then tap Updates & New items. Follow the prompts to set up an internet connection and get the updates.

FRANÇAIS

Pour recevoir les mises à jour, ouvrez le menu principal. Touchez Paramètres, puis Mises à jour et nouveaux éléments. Suivez les instructions pour configurer une connexion Internet et recevoir les mises à jour.

ENGLISH

In-car installation

FRANÇAIS

Installation dans le véhicule



ENGLISH

- 1 Connect the USB cable to the mount and to your car's USB port.
- 2 Connect the charger to the power supply on your dashboard.
- 3 Push the mount firmly against your windshield and turn the base clockwise until you feel it lock.

FRANÇAIS

- 1 Connectez la fixation au port USB de votre voiture à l'aide du câble USB.
- 2 Branchez le chargeur à l'allume-cigare de votre tableau de bord.
- 3 Placez la fixation contre le pare-brise et exercez une pression pour la positionner, puis tournez la base dans le sens des aiguilles d'une montre jusqu'à enclenchement du verrouillage.

ENGLISH

- 4 Place your GO Supreme in the mount, making sure that it clicks into place. You can use a Dashboard Mount Disk (not included) to attach the mount to your dashboard.
- 5 On some of our larger devices there is an extra locking mechanism to the rear of the mount which may also need adjusting.

FRANÇAIS

- 4 Insérez votre GO Supreme dans la fixation. Un "clik" vous indique que l'appareil est bien en place. Vous pouvez utiliser un disque de fixation adhésif pour pare-brise (non inclus) pour coller la fixation sur votre pare-brise.
- 5 On some of our larger devices there is an extra locking mechanism to the rear of the mount which may also need adjusting.

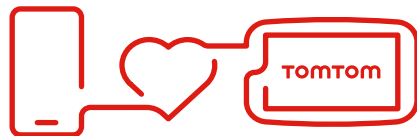
ENGLISH

Connecting your phone

FRANÇAIS

Connexion de votre téléphone

1



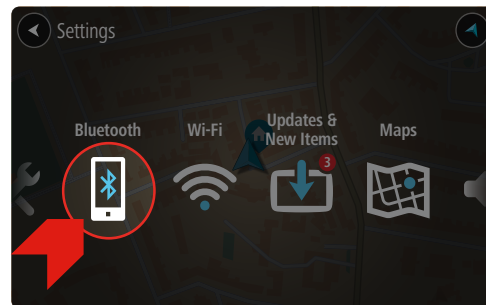
ENGLISH

Connect your phone to your TomTom GO Discover for traffic updates, fuel prices, parking availability and electric vehicle points of interest

FRANÇAIS

Connect your phone to your TomTom GO Discover for traffic updates, fuel prices, parking availability and electric vehicle points of interest

2

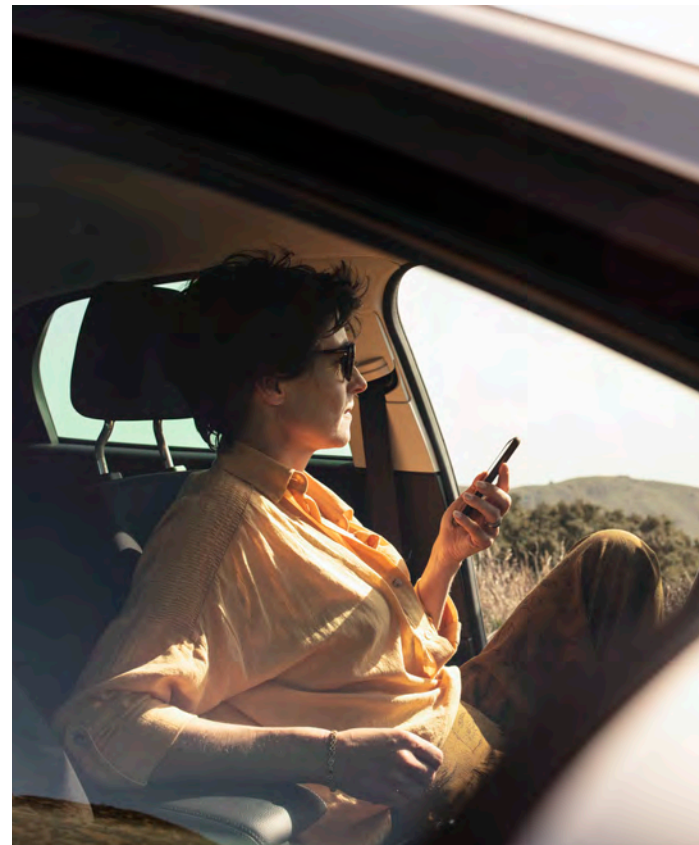


ENGLISH

To set up the connection to your phone, open the main menu, tap Settings, then tap the Bluetooth® icon.

FRANÇAIS

Pour configurer la connexion avec votre téléphone, ouvrez le menu principal, touchez Paramètres, puis l'icône Bluetooth®.



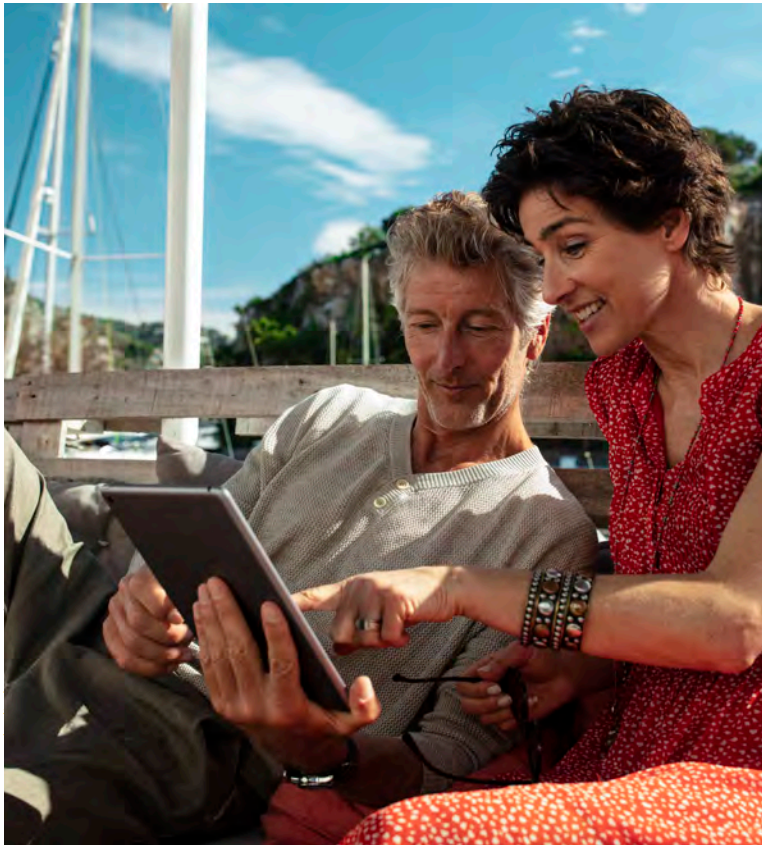
TomTom MyDrive

ENGLISH

Use TomTom MyDrive website or app to plan and edit your perfect drive. Find and book the best places to eat and stay with TripAdvisor reviews, and add them to your route. Sync them over Wi-Fi® to your device, then just drive.

FRANÇAIS

Use TomTom MyDrive website or app to plan and edit your perfect drive. Find and book the best places to eat and stay with TripAdvisor reviews, and add them to your route. Sync them over Wi-Fi® to your device, then just drive.



RoadTrips by TomTom

ENGLISH

Supercharge your drive. RoadTrips by TomTom brings you another world of driving and riding experiences just beyond your backyard. Sync your favorite day trip routes to your GPS sat nav and go. Visit roadtrips.tomtom.com

FRANÇAIS

Supercharge your drive. RoadTrips by TomTom brings you another world of driving and riding experiences just beyond your backyard. Sync your favorite day trip routes to your GPS sat nav and go. Visit roadtrips.tomtom.com

ENGLISH

Questions and feedback

FRANÇAIS

Questions et commentaires



ENGLISH

Visit tomtom.com/getstarted and tomtom.com/support to find tips, videos, FAQs, and the full User Manual.

FRANÇAIS

Rendez-vous sur tomtom.com/getstarted et tomtom.com/support pour obtenir des conseils, regarder des vidéos, ainsi que pour consulter la FAQ et le manuel d'utilisation.



ADDENDUM

Important Safety Notices and Warnings

Global Positioning System (GPS) and Global Navigation Satellite System (GLONASS)

The Global Positioning System (GPS) and Global Navigation Satellite System (GLONASS) systems are satellite-based systems that provide location and timing information around the globe. GPS is operated and controlled by the Government of the United States of America, which is solely responsible for its availability and accuracy. GLONASS is operated and controlled by the Government of Russia, which is solely responsible for its availability and accuracy. Changes in GPS or GLONASS availability and accuracy, or in environmental conditions, may impact the operation of this device. TomTom disclaims any liability for the availability and accuracy of GPS or GLONASS.

Safety messages

Important! Read before use!

Death or serious injury could result from failure or partial failure to follow these warnings and instructions. Failure to properly set up, use, and care for this device can increase the risk of serious injury or death, or damage to the device.

Use with care warning

It is your responsibility to use best judgment, due care and attention when using this device. Don't allow interaction with this device to distract you while driving. Minimise the time spent looking at the device screen while driving. You are responsible for observing laws that limit or prohibit the use of mobile phones or other electronic devices, for example, the requirement to use hands-free options for making calls when driving. Always obey applicable laws and road signs, especially those relating to your vehicle's dimensions, weight and payload type. TomTom does not guarantee the error-free operation of this device nor the accuracy of route suggestions provided and shall not be liable for any penalties arising from your failure to comply with applicable laws and regulations.

Notice for oversized/commercial vehicles

Devices without a truck or camper map installed will not provide appropriate routes for over-sized/commercial vehicles. If your vehicle is subject to weight, dimension, speed, route, or other restrictions on a public road then

you must only use a device that has a truck or camper map installed. Your vehicle specifications must be entered accurately on the device. Use this device as a navigation aid only. Do not follow navigation instructions which may put you or other road users in danger. TomTom accepts no liability for damages resulting from your failure to observe this notice.

Proper mounting

Do not mount the device in a way that may obstruct your view of the road or your ability to control the vehicle. Do not place the device in an area that may obstruct the deployment of an airbag or of any other safety feature of your vehicle.

Pacemakers

Pacemaker manufacturers recommend that a minimum of 15cm / 6 inches be maintained between a handheld wireless device and a pacemaker to avoid potential interference with the pacemaker. These recommendations are consistent with independent research and recommendations by Wireless Technology Research.

Guidelines for people with pacemakers:

- You should ALWAYS keep the device more than 15cm / 6 inches from your pacemaker.
- You should not carry the device in a breast pocket.

Other medical devices

Please consult your physician or the manufacturer of the medical device, to determine if the operation of your wireless product may interfere with the medical device.

Device care

- It is important to take care of your device:
- Do not open the casing of your device under any circumstances. Doing so may be dangerous and will invalidate the warranty.
- Wipe or dry the screen of your device using a soft cloth. Do not use any liquid cleaners.

Rating: DC5V, 1.2A

How TomTom uses your information

Information regarding the use of personal information can be found at: tomtom.com/privacy.

Environmental and Battery information

Your device

Do not disassemble, crush, bend, deform, puncture, or shred your device. Do not use it in a humid, wet and/or corrosive environment. Do not put, store or leave the device in a high temperature location, in direct sunlight, in or near a heat source, in a microwave oven or in a pressurised container, and do not expose it to temperatures over 50°C (122°F) or below -20°C (-4°F).

Avoid dropping the device. If the device is dropped and you suspect damage, please contact customer support. Use the device only with the chargers, mounts or USB cables provided. For TomTom approved replacements, go to tomtom.com.

Operating temperature

This device will remain fully operational within the temperature range 32°F / 0°C to 113°F / 45°C. Prolonged exposure to higher or lower temperatures can cause damage to your device and is therefore advised against. Temperatures: Standard operation: 32°F / 0°C to 113°F / 45°C; short period storage: -4°F / -20°C to 122°F / 50°C; long period storage: -4°F / -20°C to 95°F / 35°C.

Important: Before you switch on the device, let the device acclimatise to the standard operation temperature range for at least 1 hour. Do not use the device outside of this temperature range.

Device battery (Non-replaceable)

This product contains a lithium ion battery.

Do not modify or re-manufacture the battery. Do not attempt to insert foreign objects into the battery, or immerse or expose to water or other liquids. Do not expose the battery to fire, explosion or other hazard.

Do not short circuit a battery or allow metallic conductive objects to contact battery terminals.

Do not attempt to replace or remove the battery yourself unless the user manual clearly indicates that the battery is user replaceable. For TomTom GO Discover, a qualified professional should remove the battery. User replaceable batteries must only be used in systems for which they are specified.

Caution: Risk of explosion if the battery is replaced by an incorrect type.

If you have a problem with the battery, please contact TomTom Customer Support.

The stated battery life is the maximum possible battery life which is based on an average usage profile and can only be achieved under specific atmospheric conditions. To prolong the battery life, keep the device in a cool, dry place and follow the tips specified in this FAQ: tomtom.com/batterytips. Charging will not occur at temperatures below 32°F / 0°C or over 113°F / 45°C.

Failure to follow these guidelines may cause the battery to leak acid, become hot, explode or ignite and cause injury and/or damage. Do not attempt to pierce, open or disassemble the battery. If the battery leaks and you come into contact with the leaked fluids, rinse thoroughly with water and seek medical attention immediately.

Battery waste disposal

THE BATTERY CONTAINED IN THE PRODUCT MUST BE RECYCLED OR DISPOSED OF PROPERLY ACCORDING TO THE LOCAL LAWS AND REGULATIONS AND ALWAYS KEPT SEPARATE FROM HOUSEHOLD WASTE. BY DOING THIS YOU WILL HELP CONSERVE THE ENVIRONMENT.



WEEE -- e-waste disposal

In the EU/EEA, this product is marked with the wheelee bin symbol on its body and/or packaging as required by Directive 2012/19/EU (WEEE). This product shall not be treated as household waste or be disposed of as unsorted municipal waste. You can dispose of this product by returning it to the point of sale or bringing it to your local municipal collection point for recycling.

Outside of the EU/EEA, the wheelee bin symbol may not have the same meaning. More information about national recycling options can be requested from a responsible local authority. It is the responsibility of the end user to comply with local law when disposing of this product.



Triman logo



Certification for Australia



This product displays the Regulatory Compliance Mark (RCM) to show that it complies with relevant Australian regulations.

Warning for Australia

The user needs to switch off the device when exposed to areas with potentially explosive atmospheres such as petrol stations, chemical storage depots and blasting operations.

Certification for New Zealand

This product displays R-NZ to show it complies with relevant New Zealand regulations.

Customer support contact (Australia and New Zealand)

Australia: 1300 135 604

New Zealand: 0800 450 973

TomTom MyDrive app

This device is compatible with the TomTom MyDrive mobile application which may be downloaded from tomtom.com/mydrive-app. The use of the TomTom MyDrive mobile application on your smartphone and any integration with your product will require that your smartphone has a wireless data service plan provided by a third party wireless service carrier. The procurement of and all charges associated with such a connectivity plan are your responsibility. TomTom shall not be liable for any costs or expenses associated with such network connectivity plan (such as the data charges or possible tethering fees which may be imposed by your carrier). Any changes to the availability or reliability of the network connection may impact the operation of certain TomTom services which may be offered on this device.

Terms and Conditions: Limited warranty and EULA

Our terms and conditions, including our limited warranty and end user licence terms apply to this product. Visit tomtom.com/legal.

This document

Great care was taken in preparing this document. Constant product development may mean that some information is not entirely up to date. The information is subject to change without notice. TomTom shall not be liable for technical or editorial errors or omissions contained herein, nor for incidental or consequential damages resulting from the performance or use of this document. This document may not be copied without the prior written consent from TomTom N.V.

Model numbers

TomTom GO Discover: 4YB50, 4YB60, 4YB70

CE mark and Radio Equipment Directive for TomTom GO Discover



This device can be used in all EU Member States. The frequency bands and the maximum radio frequency emission power in which this device operates are as follows:

Model	Frequency band BT	Maximum radio frequency emission power	Frequency band WIFI 2.4G	Maximum radio frequency emission power	Frequency band WIFI 5G	Maximum radio frequency emission power
4YB50	2402-2480MHz	<10dB	2412-2472MHz	<20dB	5180-5825MHz	<20dB
4YB60	2402-2480MHz	<10dB	2412-2472MHz	<20dB	5180-5825MHz	<20dB
4YB70	2402-2480MHz	<10dB	2412-2472MHz	<20dB	5180-5825MHz	<20dB

Hereby, TomTom declares that the radio equipment type TomTom GO Discover GPS Navigation system is in compliance with Directive 2014/53/EU. The full text of the EU declaration of conformity is available at the following internet address: http://www.tomtom.com/en_gb/legal/declaration-of-conformity/

EU Specific Absorption Rate (SAR) compliance

THIS WIRELESS DEVICE MODEL MEETS GOVERNMENT REQUIREMENTS FOR EXPOSURE TO RADIO WAVES WHEN USED AS DIRECTED IN THIS SECTION

This GPS Navigation System is a radio transmitter and receiver. It is designed and manufactured not to exceed the emission limits for exposure to radio frequency (RF) energy set by the Council of the European Union. The SAR limit recommended by The Council of the European Union is 2.0W/kg averaged over 10 grams of tissue for the body (4.0 W/kg averaged over 10 grams of tissue for the extremities - hands, wrists, ankles and feet). Tests for SAR are conducted using standard operating positions specified by the EU council with the device transmitting at its highest certified power level in all tested frequency bands.

Accessories supplied with this device

Note: All device models are supplied with a Quick Start Guide. The accessories listed below are supplied in the box

- Car charger
- USB cable

Copyright notices

© 1992 - 2019 TomTom. All rights reserved. TomTom and the "two hands" logo are registered trademarks of TomTom N.V. or one of its subsidiaries.

The software included in this product contains copyrighted software that is licensed under the GPL. A copy of that licence can be viewed in the Licence section. You can obtain the complete corresponding source code from us for a period of three years after our last shipment of this product. For more information, visit tomtom.com/gpl or contact your local TomTom customer support team at tomtom.com/support. Upon request, we will send you a CD with the corresponding source code.

Bluetooth®

The Bluetooth® word mark and logos are registered trademarks owned by Bluetooth SIG, Inc. and any use of such marks by TomTom is under licence. Other trademarks and trade names are those of their respective owners. Wi-Fi® is a registered trademark of Wi-Fi Alliance®. Apple, iPhone, Mac and Siri are trademarks of Apple Inc. registered in the U.S. and other countries.

Google, Google Play, the Google Play logo, Android and other marks are trademarks of Google LLC.





15.105(b)

This equipment has been tested and found to comply with the limits for a Class B digital device, pursuant to part 15 of the FCC rules. These limits are designed to provide reasonable protection against harmful interference in a residential installation.

This equipment generates, uses and can radiate radio frequency energy and, if not installed and used in accordance with the instructions, may cause harmful interference to radio communications. However, there is no guarantee that interference will not occur in a particular installation. If this equipment does cause harmful interference to radio or television reception, which can be determined by turning the equipment off and on, the user is encouraged to try to correct the interference by one or more of the following measures:

- Reorient or relocate the receiving antenna.
- Increase the separation between the equipment and receiver.
- Connect the equipment into an outlet on a circuit different from that to which the receiver is connected.
- Consult the dealer or an experienced radio/TV technician for help.

15.21

You are cautioned that changes or modifications not expressly approved by the part responsible for compliance could void the user's authority to operate the equipment.

FCC RF Radiation Exposure Statement:

1. This Transmitter must not be co-located or operating in conjunction with any other antenna or transmitter.

This device contains licence-exempt transmitter(s)/receiver(s) that comply with Innovation, Science and Economic Development Canada's licence-exempt RSS(s). Operation is subject to the following two conditions:

1. This device may not cause interference, and
2. This device must accept any interference, including interference that may cause undesired operation of the device.

L'émetteur/récepteur exempt de licence contenu dans le présent appareil est conforme aux CNR d'Innovation, Sciences et Développement économique Canada applicables aux appareils radio exempts de licence. L'exploitation est autorisée aux deux conditions suivantes :

1. l'appareil ne doit pas produire de brouillage, et
2. l'utilisateur de l'appareil doit accepter tout brouillage radioélectrique subi, même si le brouillage est susceptible d'en compromettre le fonctionnement.

Caution: Exposure to Radio Frequency Radiation

1. To comply with the Canadian RF exposure compliance requirements, this device and its antenna must not be co-located or operating in conjunction with any other antenna or transmitter.

Attention: exposition au rayonnement radiofréquence

1. Pour se conformer aux exigences de conformité RF canadienne l'exposition, cet appareil et son antenne ne doivent pas être co-localisés ou fonctionnant en conjonction avec une autre antenne ou transmetteur.

TOMTOM 

Find accessories at
www.tomtom.com/sat-nav/accessories