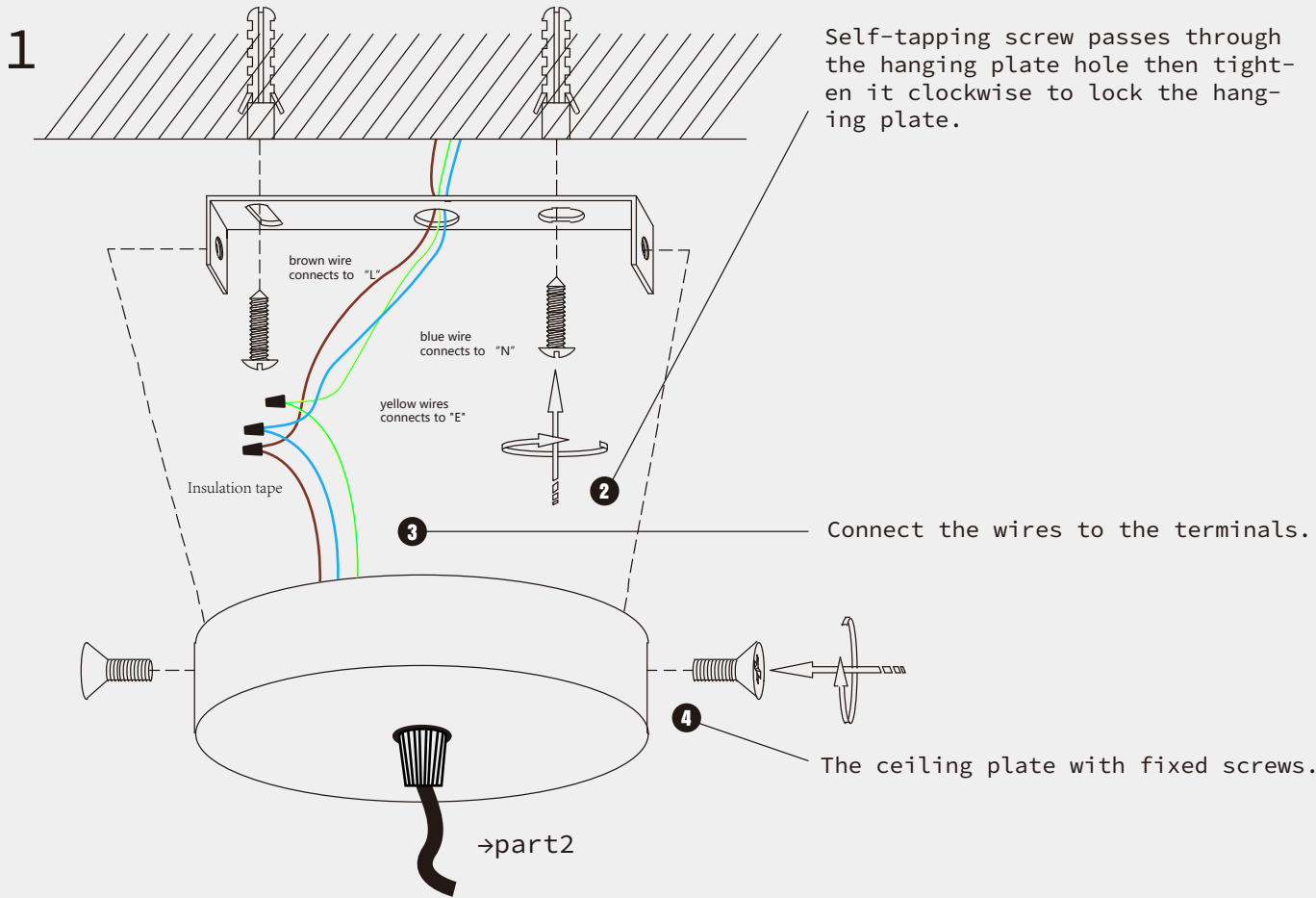
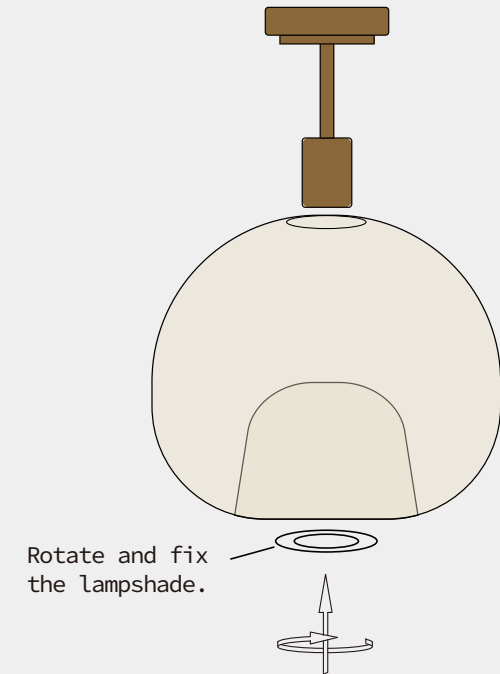


Vintage Bubble Glass Flush Mount Ceiling Light

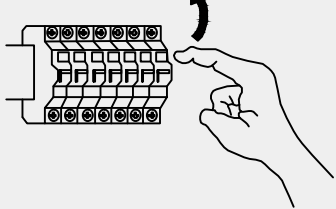
CL0153



2 Install lampshades from top to bottom.



3 Turn on the power. ON



THE LAMP INSTRUCTION



Maintenance	Precautions
1.Voltage:110-120V	Keep the lighting away from acidlc chemical solvents to avoid damage.
2.Please wear gloves when install.	
3.Don't install it on the moist ceiling.	Tip Please follow the instructions then install the parts in the correct order.
4.Turn off the power before cleaning out.	
5.Please wash with the sanitizer without corrosivity.	