

**RSC18**



## IMPORTANT!

It is essential that you read the instructions in this manual before assembling, operating, and maintaining the product. Subject to technical modifications.

Safety, performance, and dependability have been given top priority in the design of your swiftclean vacuum.

## INTENDED USE

The swiftclean vacuum is intended for the following purposes:

- Light-duty vacuuming of wet or dry surfaces
- Light-duty cleaning of upholstery

Use only the included cleaning solution. Do not use other chemicals as this may damage the internal parts of the product and void your warranty.

Do not use the product for any other purpose.

## SWIFTCLEAN VACUUM SAFETY WARNINGS

- This product is not intended for use by persons (including children) with reduced physical, sensory or mental capabilities, or lack of experience and knowledge, unless they have been given supervision or instruction concerning use of the product by a person responsible for their safety. Children should be supervised to ensure that they do not play with the product.
- The product is intended for household use only.
- Never vacuum materials such as hot coals, cigarette butts, matches, etc.
- Do not use the product without dust bowl or filter in place.
- Use extra care when using the product on stairs.
- Do not use the product to pick up hard objects such as nails, screws, coins, etc. Damage or injury could result.
- Always close the battery cover and lock it in place before use. Do not expose the battery pack to rain or wet conditions.
- Remove the battery when the product is not in use or when changing accessories.
- Rechargeable batteries are to be removed from the product before being charged.
- Exhausted batteries are to be removed from the product and safely disposed of.
- If the product is to be stored unused for a long period, the batteries should be removed.
- The supply terminals are not to be short-circuited.

## ADDITIONAL SAFETY WARNINGS

- Do not clean over electrical outlets located on the floor. Water may drip from the product after use and can puddle. To avoid damage, do not place the product on wood or laminate surfaces. If setting the product aside for more than a few minutes, place it on a towel or other absorbent material to catch any drips. Failure to follow these rules may cause serious injury or damage to property.
- Always hold the product at an angle with the nozzle facing down when vacuuming liquids or when the waste tank contains liquid waste. Positioning the product on its side or holding it with its nozzle facing up could

allow liquid to enter the motor or battery. Battery packs exposed to liquids can result in smoke or fire, serious personal injury or property damage.

- Apply the cleaning solution sparingly to complete the task. Excessive foaming may occur if too much cleaning solution is present.
- During use, make sure the product does not get submerged or doused in liquid, which could cause shock, unit failure, or personal injury.
- Never allow the amount of waste liquid to exceed the max fill line. Failure to follow this rule may allow liquid to enter the product, which could cause shock, property damage, or personal injury.
- If the waste tank contains liquid, do not turn the product upside down as it may enter the motor.

## ADDITIONAL BATTERY SAFETY WARNINGS

- To reduce the risk of fire, personal injury, and product damage due to a short circuit, never immerse your tool, battery pack or charger in fluid or allow a fluid to flow inside them. Corrosive or conductive fluids, such as seawater, certain industrial chemicals, and bleach or bleach-containing products, etc., can cause a short circuit.

## TRANSPORTING LITHIUM BATTERIES

Transport the battery in accordance with local and national provisions and regulations.

Follow all special requirements on packaging and labelling when transporting batteries by a third party. Ensure that no batteries can come in contact with other batteries or conductive materials while in transport by protecting exposed connectors with insulating, non-conductive caps or tape. Do not transport batteries that are cracked or leaking. Check with the forwarding company for further advice.

## MAINTENANCE

- Use only original accessories and spare parts. Should components need to be replaced which have not been described, please contact an authorised service centre. All repairs should be performed by an authorised service centre.
- Avoid using solvents when cleaning plastic parts. Most plastics are susceptible to various types of commercial solvents and may be damaged by their use. Use clean cloths to remove dirt, carbon dust, etc.
- Do not at any time let brake fluids, gasoline, petroleum-based products, penetrating oils, etc., come in contact with plastic parts. Chemicals can damage, weaken or destroy plastic which may result in serious personal injury.

## SYMBOLS



Safety Alert

V

Volts

W

Watts



Direct current



Regulatory Compliance Mark (RCM). Product meets applicable regulatory requirements.



Please read the instructions carefully before starting the product.

Do not dispose of waste batteries, waste electrical and electronic equipment as unsorted municipal waste.

Waste batteries and waste electrical and electronic equipment must be collected separately.

Waste batteries, waste accumulators, and light sources have to be removed from the equipment.

Check with your local authority or retailer for recycling advice and collection point.

According to local regulations, retailers may have an obligation to take back waste batteries and waste electrical and electronic equipment free of charge.

Your contribution to the reuse and recycling of waste batteries and waste electrical and electronic equipment helps to reduce the demand of raw materials.

Waste batteries, in particular containing lithium, and waste electrical and electronic equipment contain valuable and recyclable materials, which can adversely impact the environment and the human health if not disposed of in an environmentally compatible manner.

Delete personal data from waste equipment, if any.



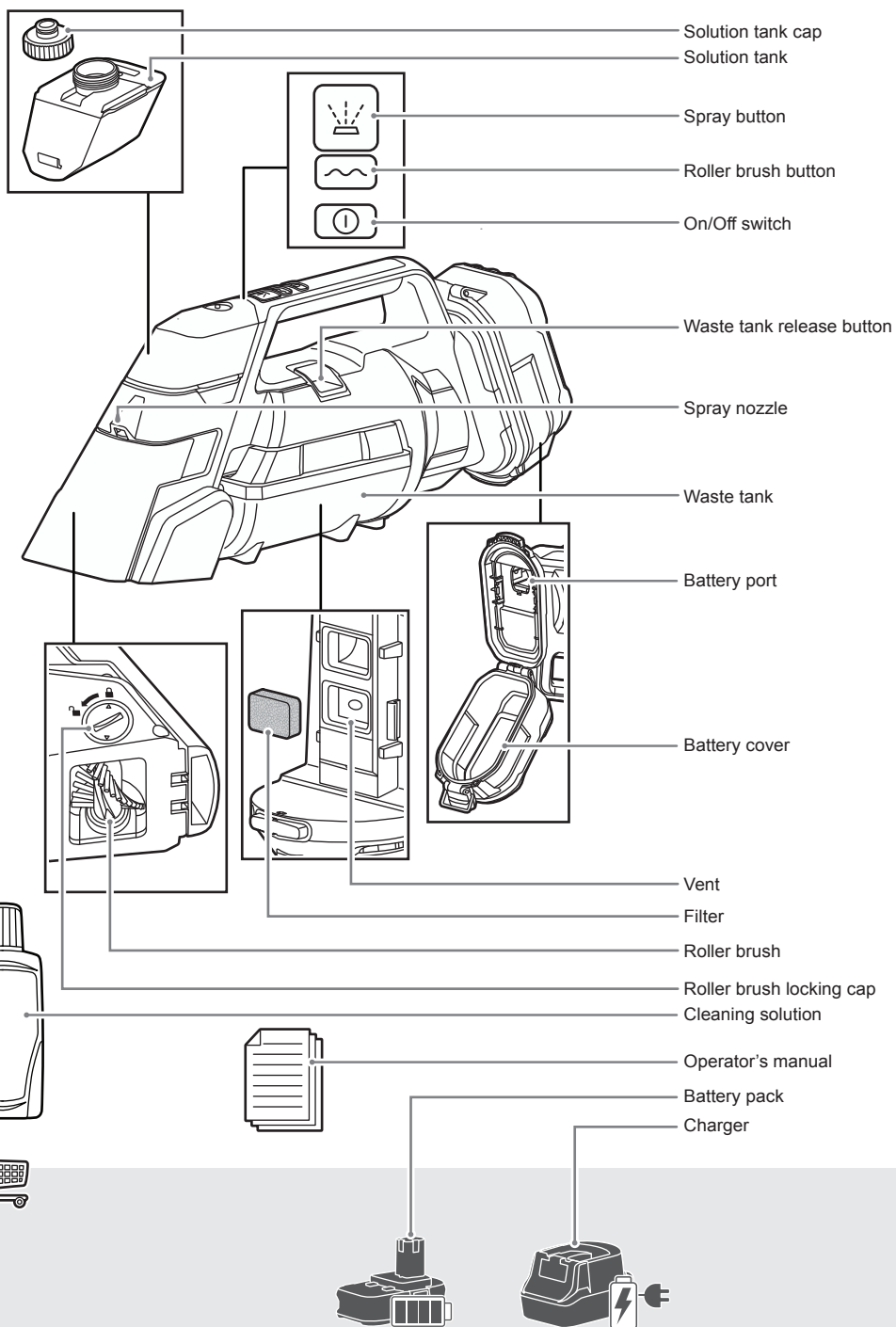
## SYMBOLS IN THIS MANUAL

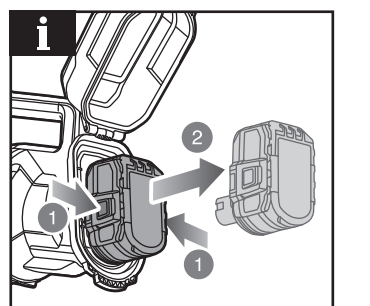
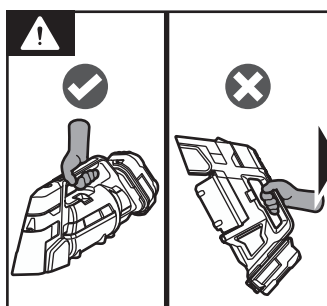
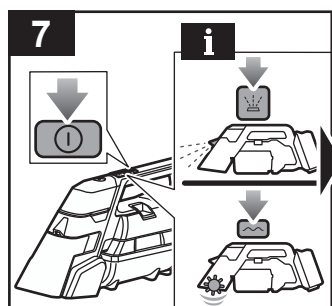
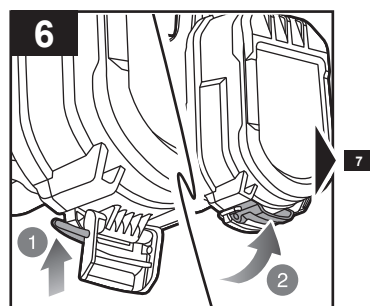
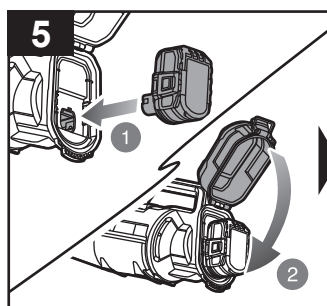
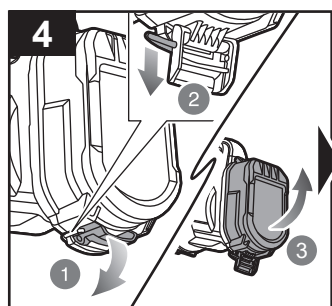
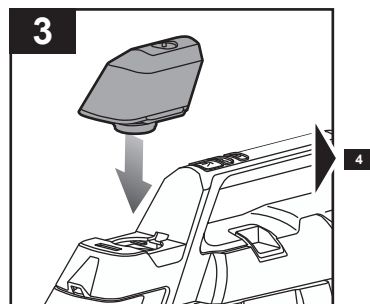
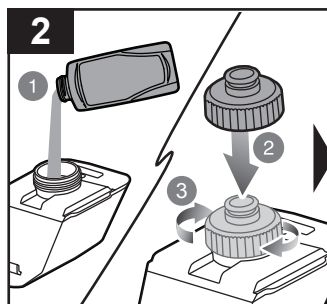
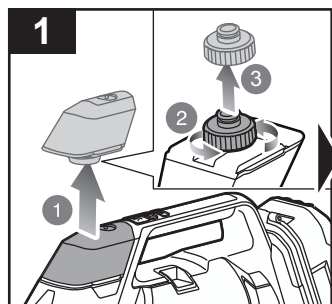


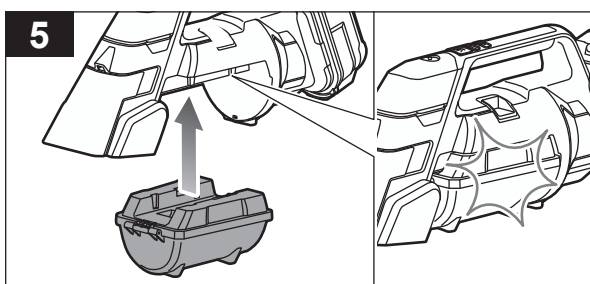
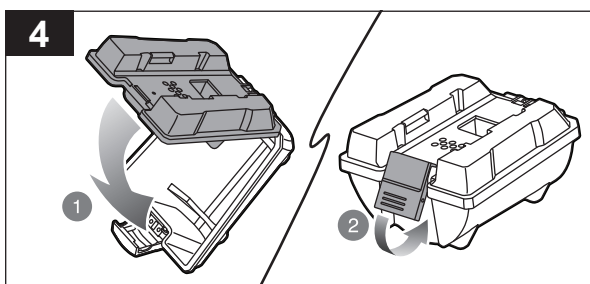
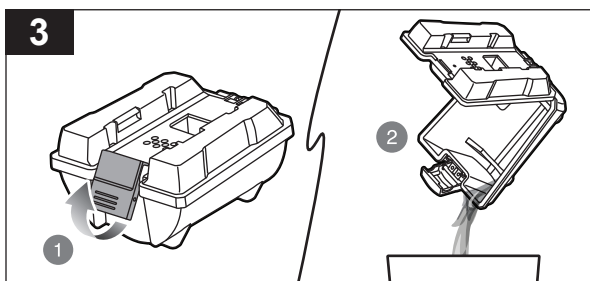
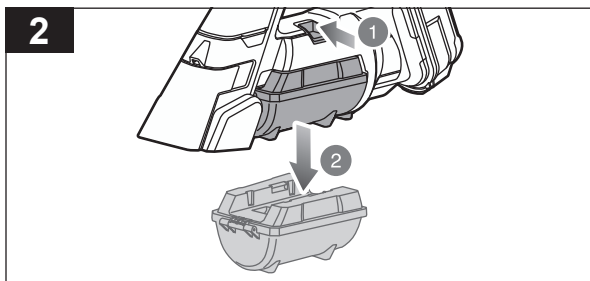
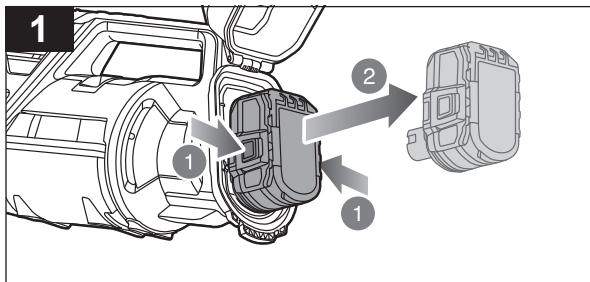
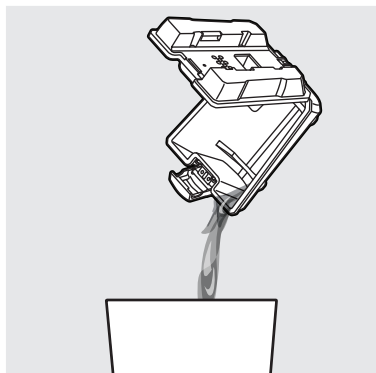
Note

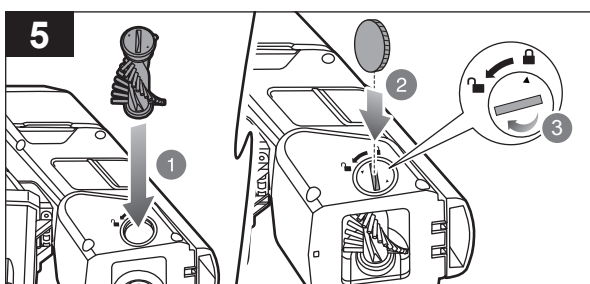
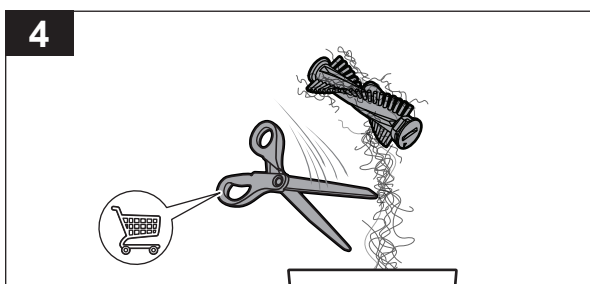
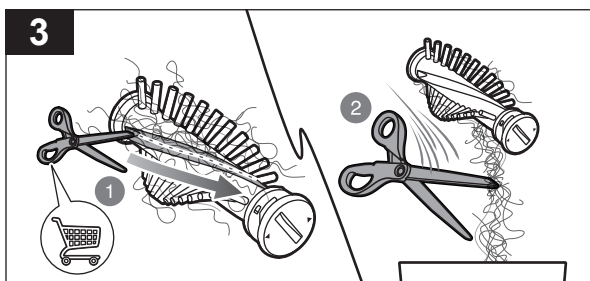
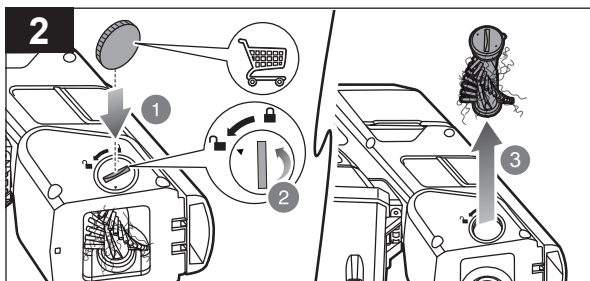
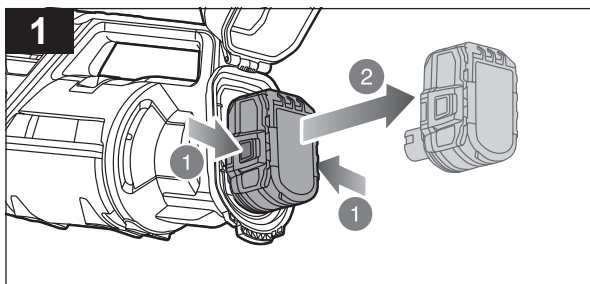
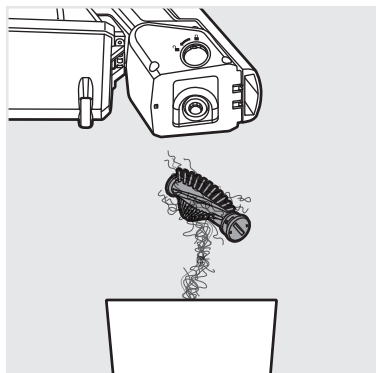


Parts or accessories sold separately

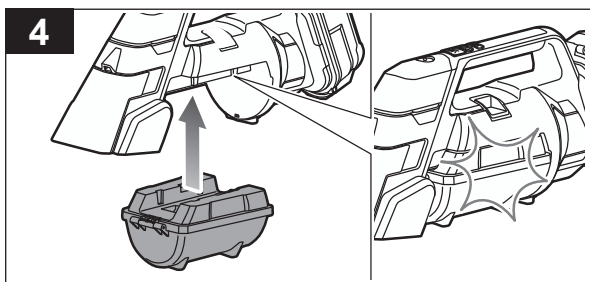
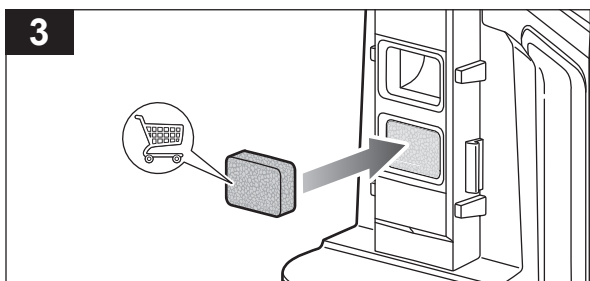
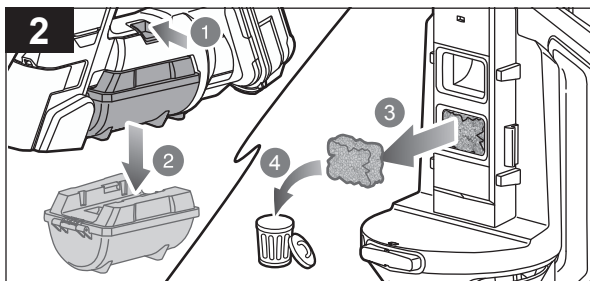
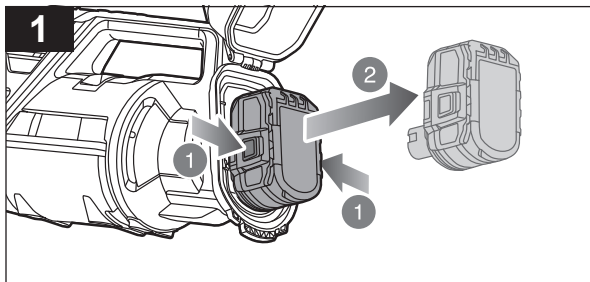
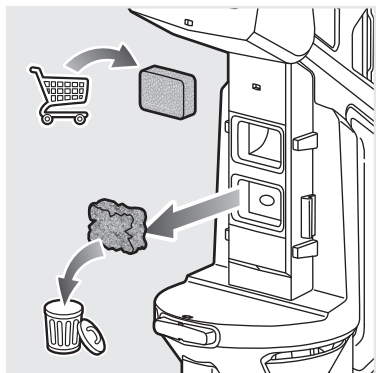




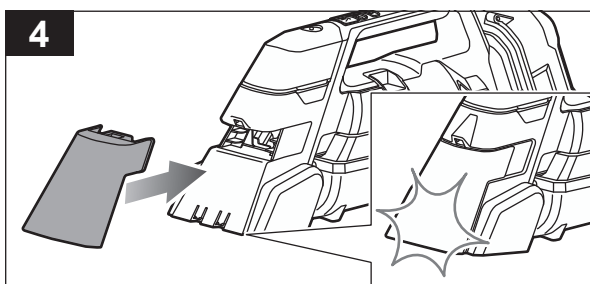
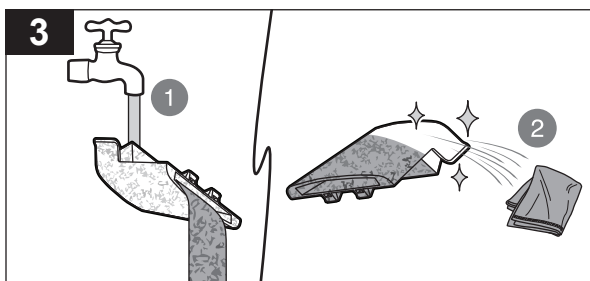
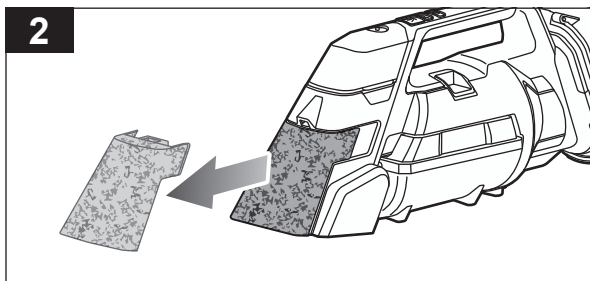
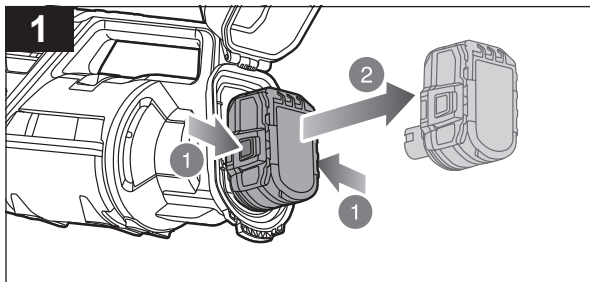
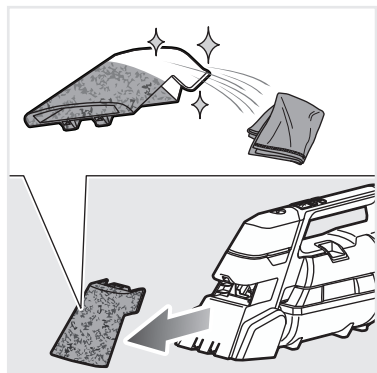













## PRODUCT SPECIFICATIONS

Swiftclean vacuum

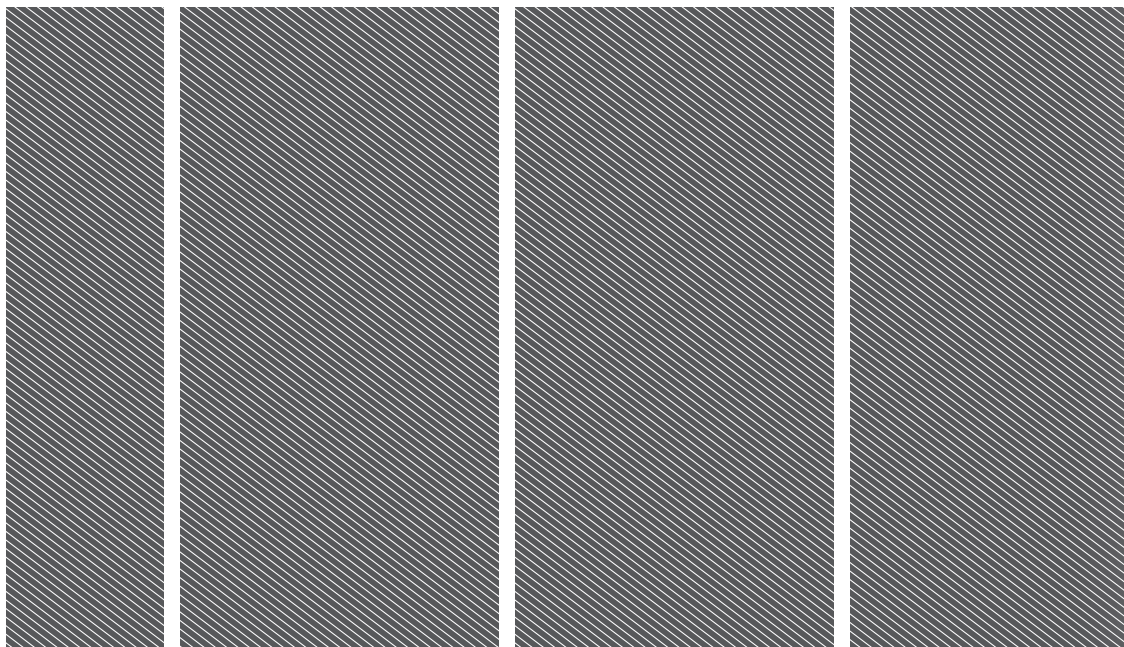
Model	RSC18
Voltage	18 V 
Air watts	13 AW
Suction	4.3 kPa
Air flow volume	480 L/min
Waste tank capacity	200 ml
Weight - excluding battery pack	2.5 kg
Replacement parts	
Filter	904059001

## BATTERY

Compatible battery pack (not included)

RB18L13	RB18L25	RB18L60A	RB1840X
RB18L15	RB18L25A	RB1815C	RB1850C
RB18L15A	RB18L40	RB1820C	RB1850X
RB18L15B	RB18L40A	RB1825C	RB1860X
RB18L20	RB18L50	RB1840C	
RB18L20A	RB18L50A		





Imported by:  
**Techtronic Industries Australia Pty Ltd**  
31 Gilby Road, Mount Waverley, VIC 3149  
Melbourne, Australia

**Techtronic Industries N.Z. Limited**  
Unit C, 70 Business Parade South,  
Highbrook, Auckland 2013, New Zealand

*RYOBI is a trade mark of Ryobi Limited, and is used under license.*

961075770-01

