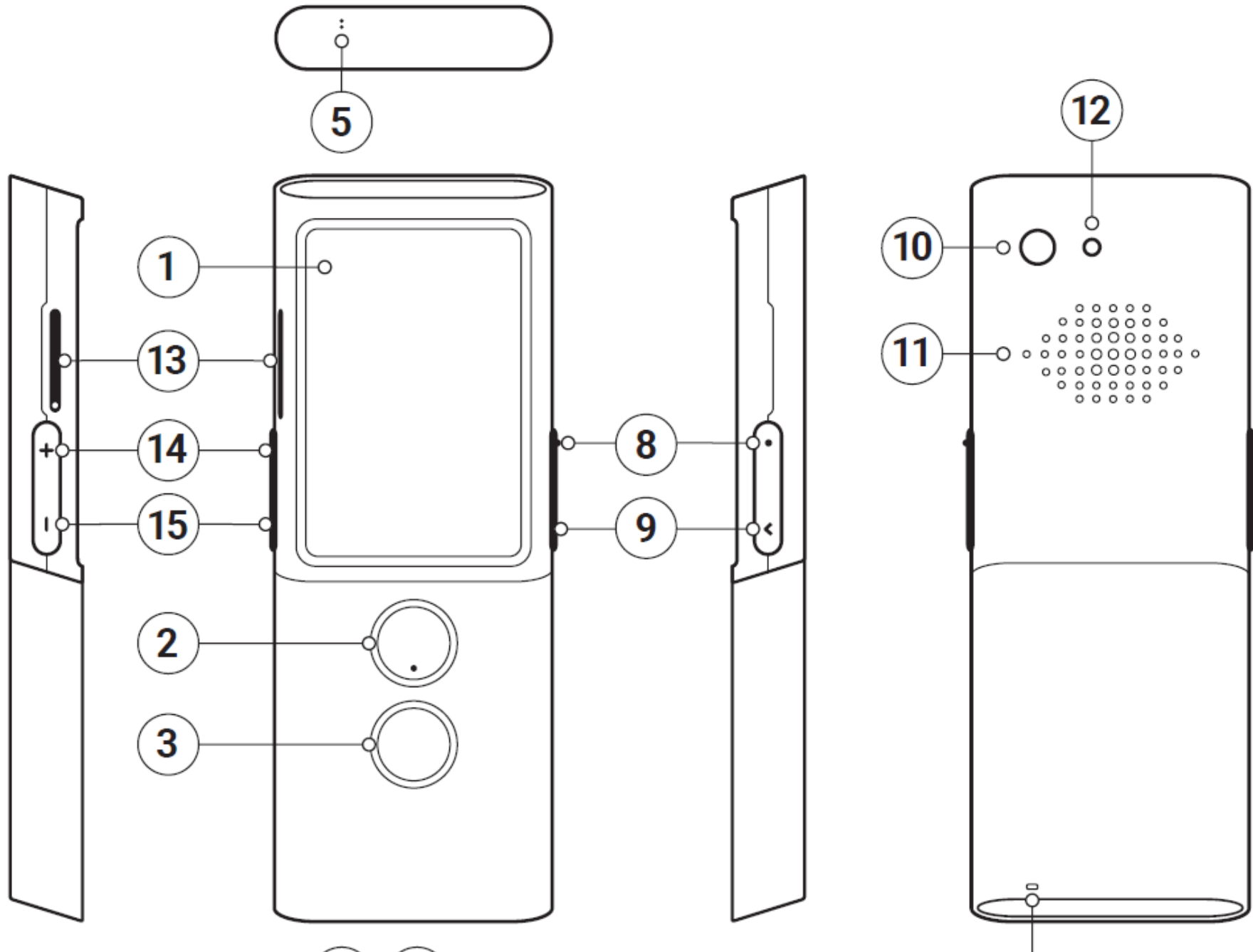
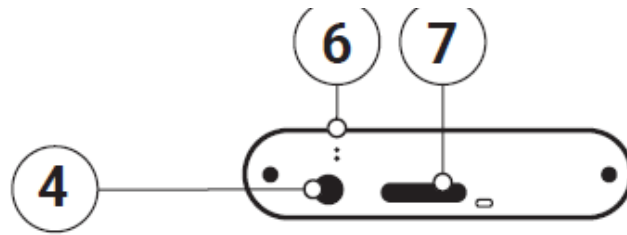


# Operation





1. Touchscreen
2. Speech recognition button 1
3. Speech recognition button 2
4. Headphones input
5. Microphone
6. Microphone
7. USB - C
8. Power button


9. Back
10. Camera
11. Loudspeaker
12. LED Flash
13. SIM card slot
14. Volume up
15. Volume down
16. Lanyard hole

## Function keys

### Power (8)

- Device turned off: hold this key for 3 seconds to turn on.
- Device working:
  - push this key to turn the screen off, push again to turn it on
  - push and hold the key for 2 seconds and tap “Power off” to turn the device off

### Volume

- Device working: push up or down to increase or decrease the volume.
- You will see this icon: 

### Back

- The back button allows you to return to the previous screen.

### Speech recognition buttons (2) & (3)

- The language buttons serve to enter text using the voice recognition function.

## Battery charging

- Plug the charger into an electric socket and the USB cable into the device in order to charge the battery.
- The battery indicator moves to charging mode.
- The battery is fully charged after about 4 hours.
- After the battery is charged, remove the charger and the USB cable.

**WARNING:** Charge the battery in a well-ventilated area between 14°F and 95°F (-10°C to +35°C). To charge the battery use the charger provided by the manufacturer. Using any other charger may damage the device.

## Handling during long periods of inactivity

### Storage

Before preparing the device for a long period of inactivity please do the following:

- Charge the battery to 50%
- Turn the device off
- Store the device in a cool and shaded place
- Try to turn on the device and charge up to 50% at least once a month

### Starting the device after a long period of inactivity

Turn the device on by pressing and holding the power button for about 3 seconds. If the device does not respond, connect the USB cable and plug it into the charger.

## Disposal of this product

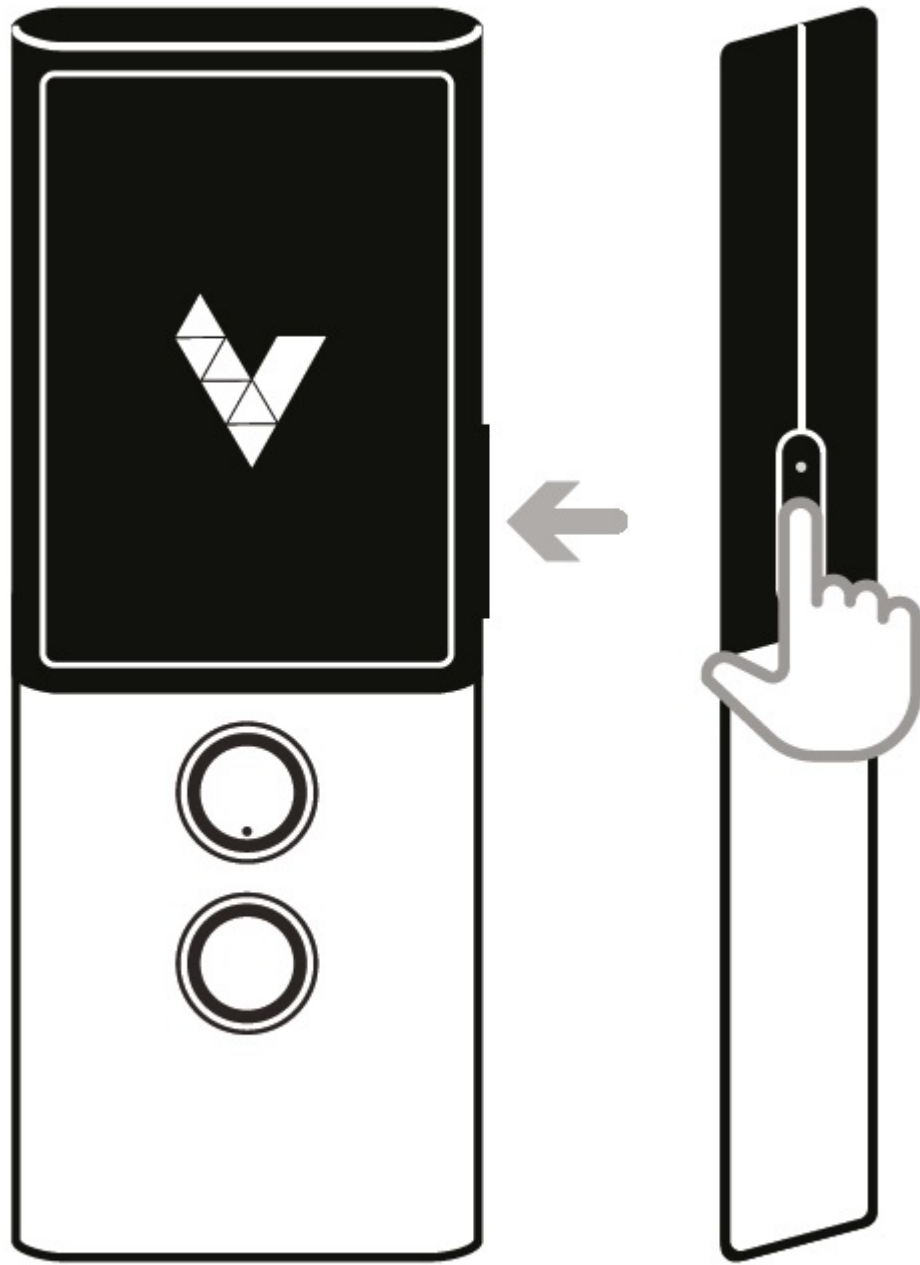
Please dispose of this product in accordance with local regulations.


## In-built SIM card

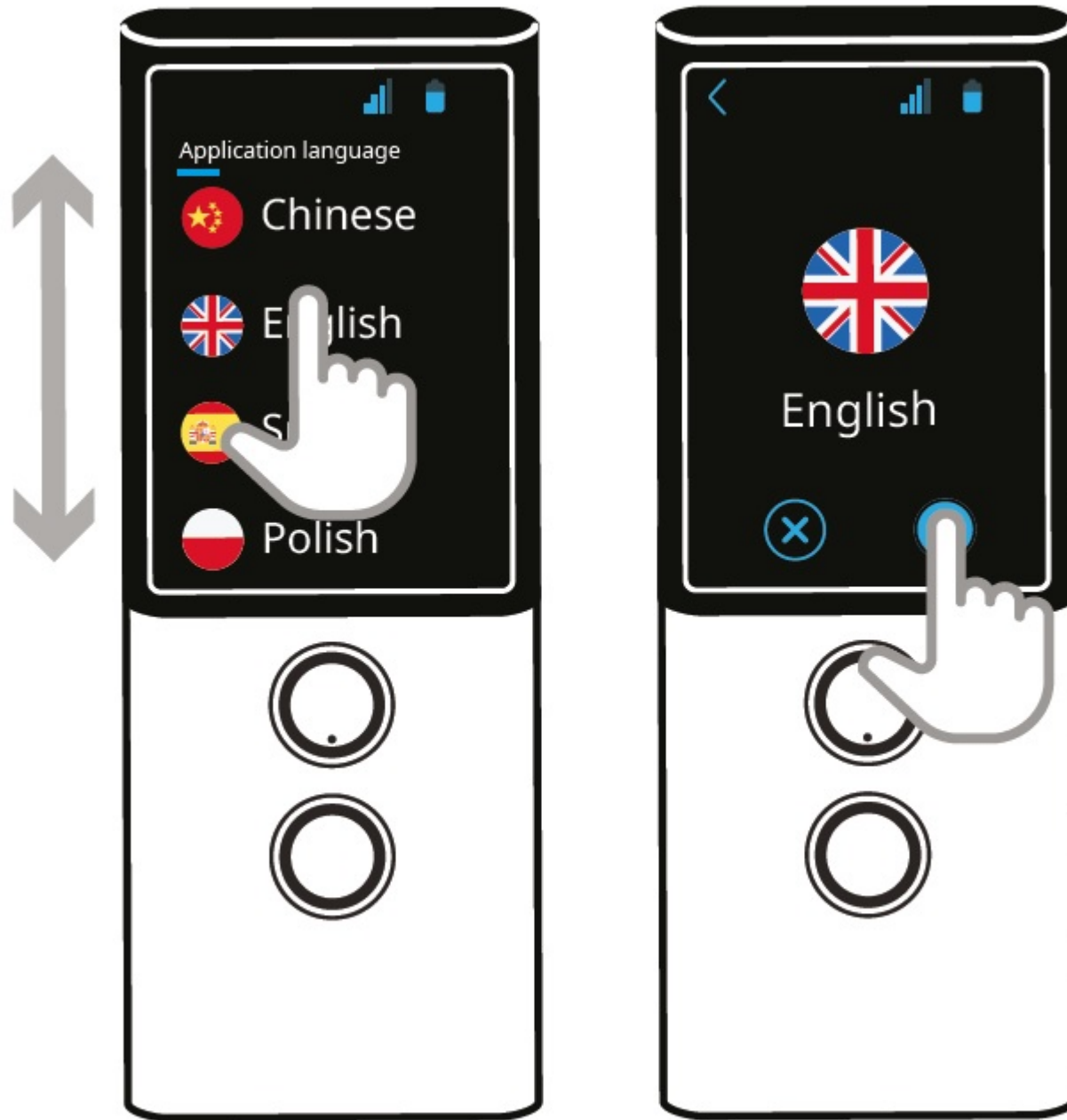
The device is equipped with an international SIM card that allows it to work without WiFi. The in-built SIM card doesn't require any contract.

## Initial start up

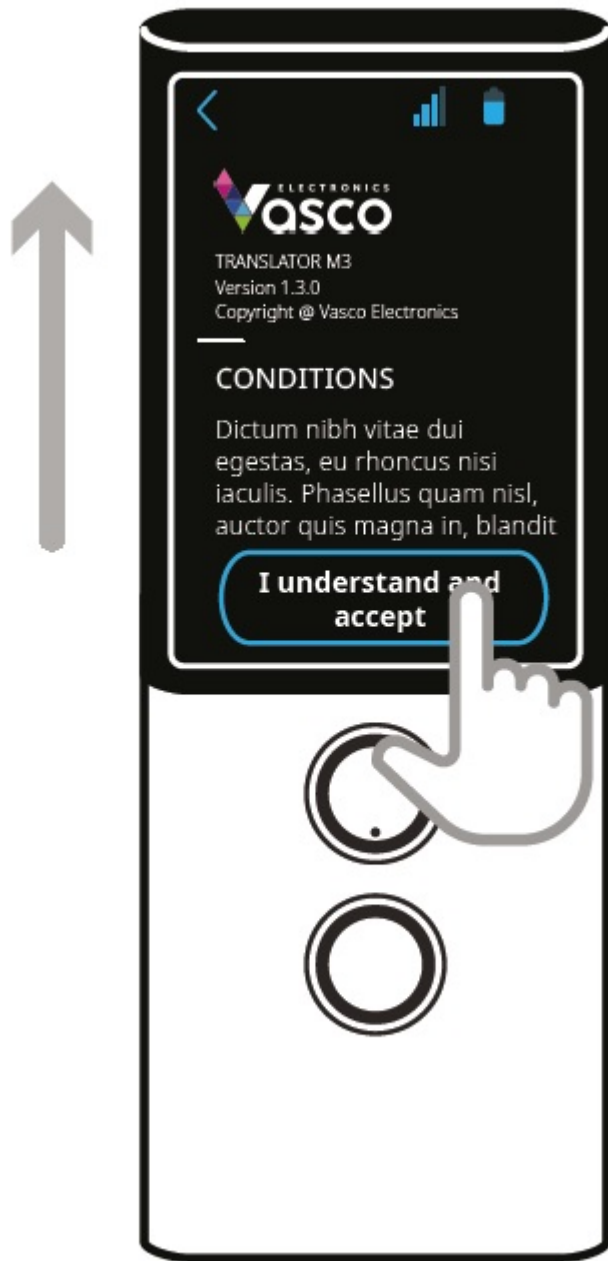
Press and hold the power button for about 3 seconds to turn the device on.



Select the display language and confirm by tapping: 



Read and accept the terms of service.



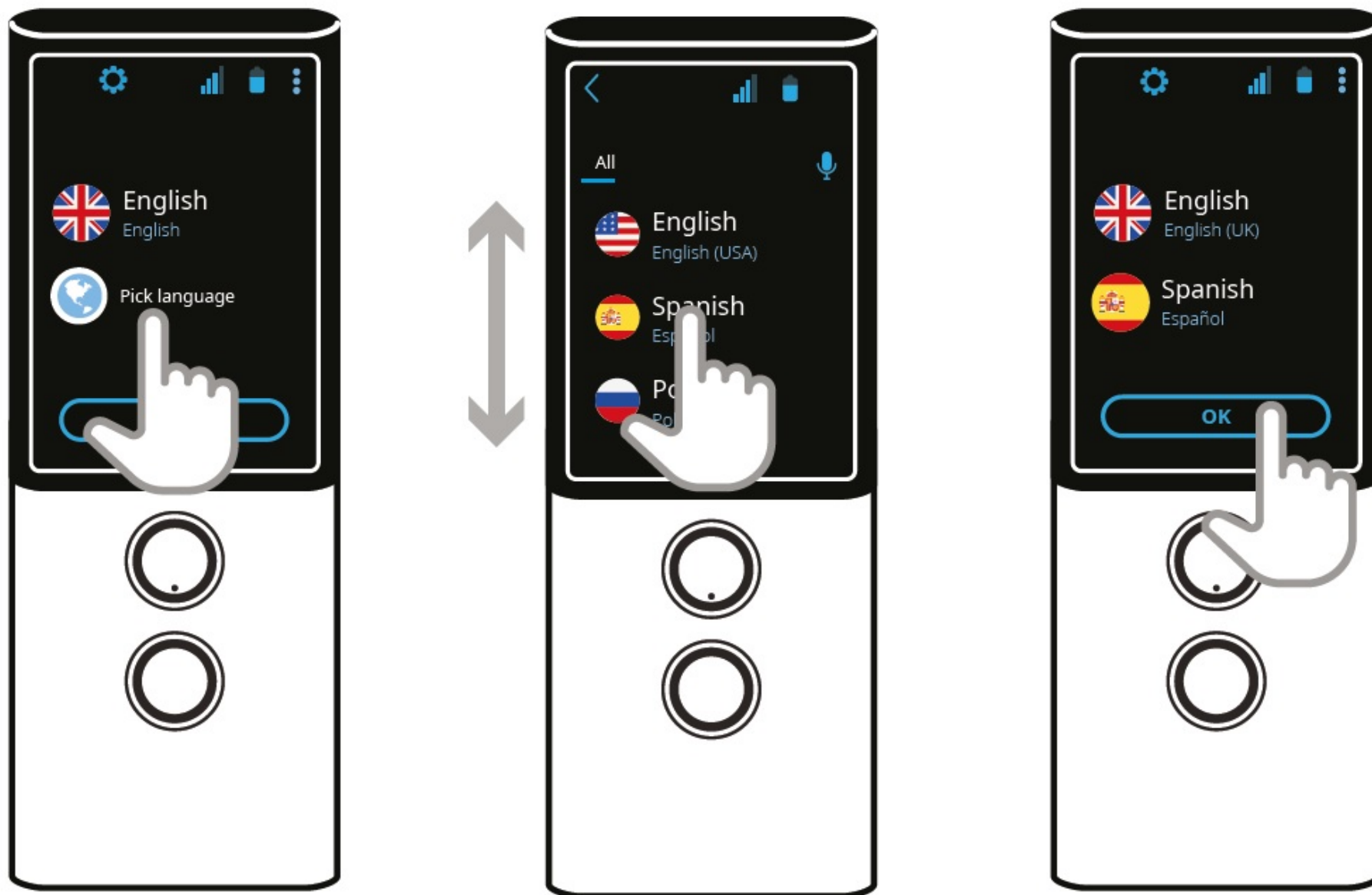
You will see the main screen of Vasco M3. The device is now ready to use.

## Translator

Vasco Translator M3 recognizes your voice and translates full sentences into supported foreign languages. The translator pronounces the translated text out loud. For the full list of supported languages consult the Vasco website. Vasco Translator M3 needs a GSM or WiFi network in order to translate. You can also launch Translator from the “Application menu”. This is the first app on the list.

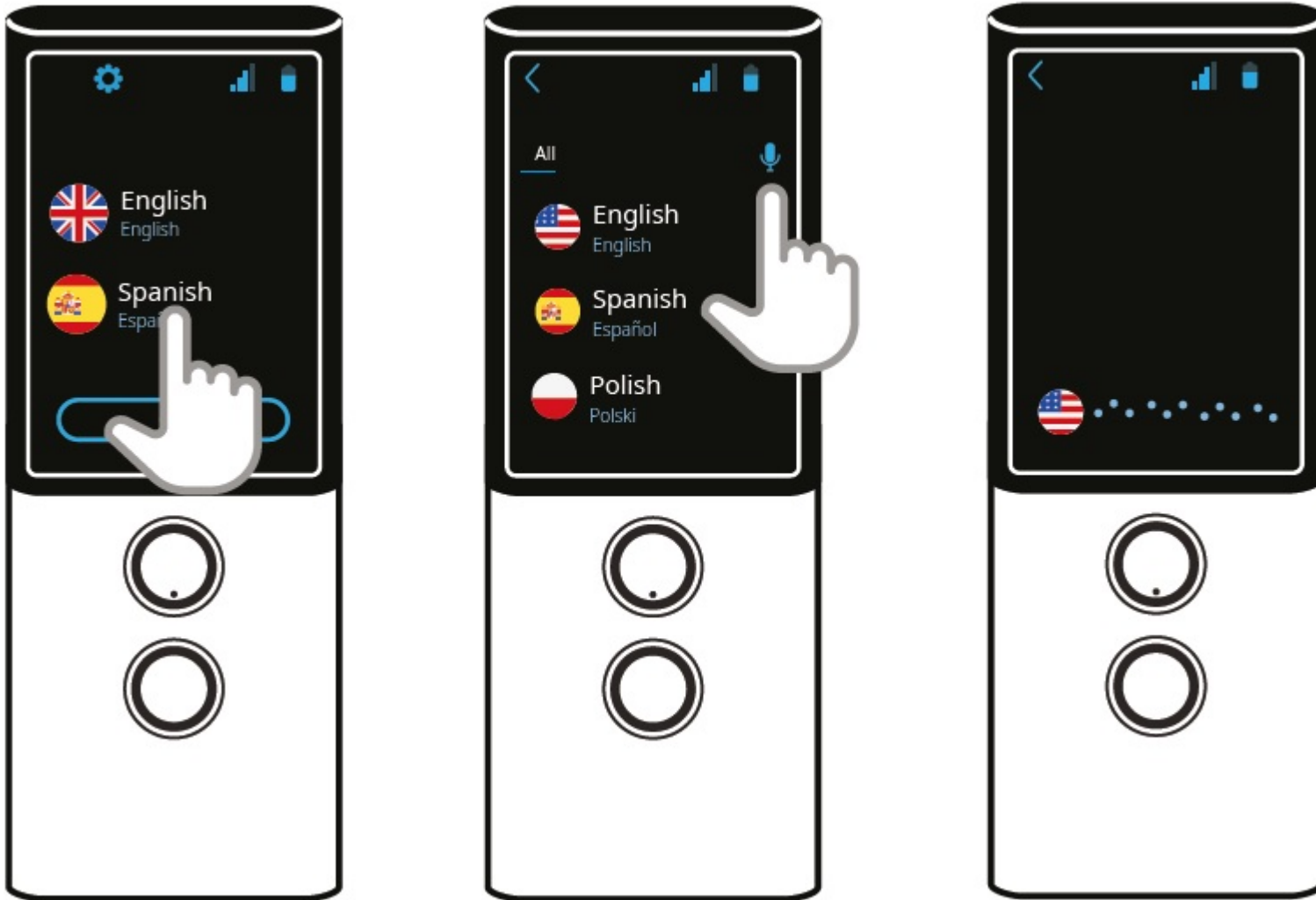
### Choosing the source and target languages



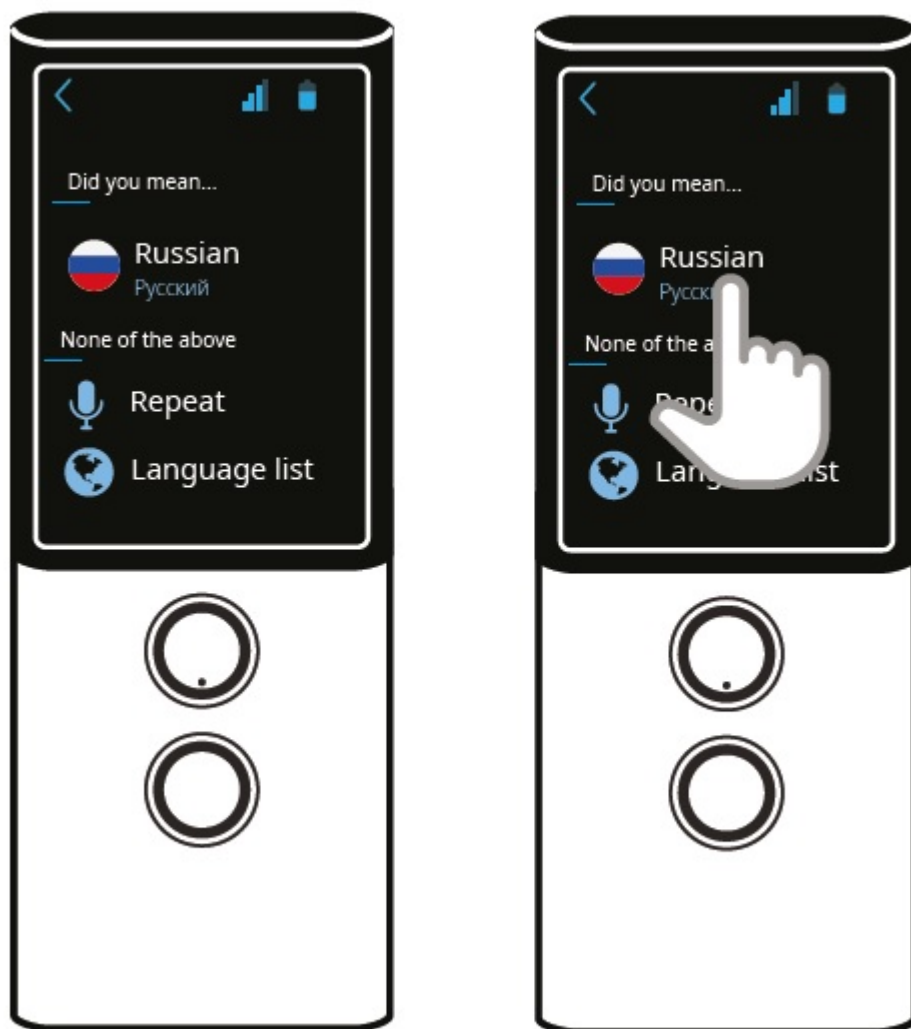




- Tap the flag symbol to see the list of available languages.
- Swipe up or down to find the language you need.
- Tap the name of the language to activate it.

You can also use voice recognition to select a language

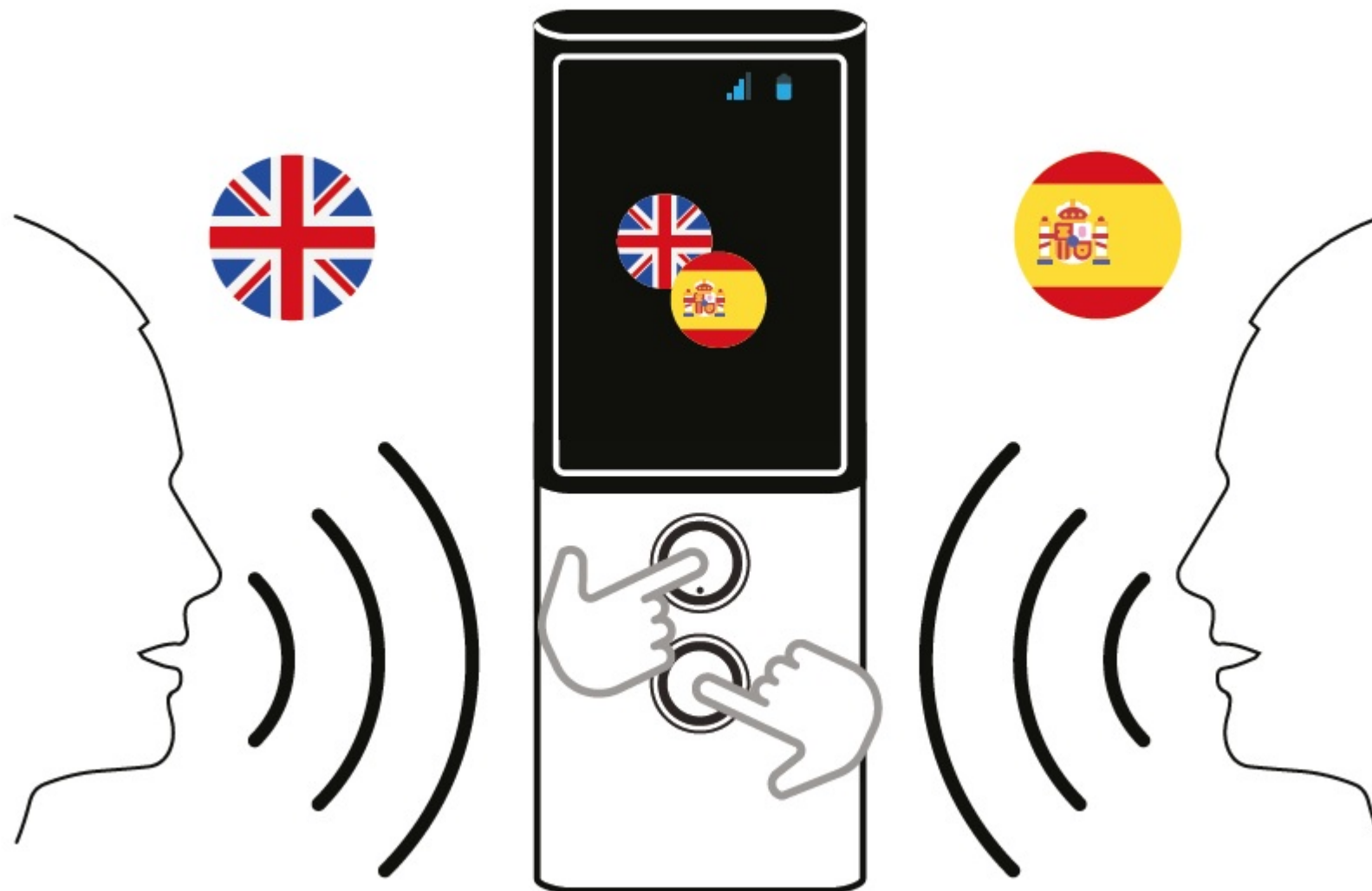


- Tap any flag.
- Tap the microphone button.
- Say the language name e.g. Russian.



- The language you are looking for will appear on the screen.
- Tap the flag to select it.
- Tap  to repeat.
- Tap  to return to the language list.

## Voice recognition





The buttons below the screen are used to enter text using the voice recognition function. In order to enter text for translation, press and hold the key or just press it once and, after hearing a beep, start speaking in a clear, even voice, from a distance of about one foot (30 cm).

When you finish, the translation is done automatically after 0.5 second.





Tap the text to playback.

**WARNING:** The quality of voice recognition may worsen in a loud environment.

- Tap  to get back to the previous screen.
- Tap  to enter the application settings.

## History

Tap “History” to enter the settings of the translation history.

- Remember - if the option is checked Vasco will remember the history of the translations. By confirming  you will delete the previous history entries.
- Share - this option allows you to share selected translations or your entire translation history. To share selected translations to an email address, tap this option, check the translations you want to share, tap “Share”, enter the email address and tap “Send”. If you want to share the whole history, tap this option, enter the email address and tap send.
- Clear - Tap this option and confirm by tapping  to delete all history entries.

## Speech

Tap “Speech” to enter the “Speech” settings.

- Automatic - Check this option to turn automatic speech translation on/off.
- Rate - Increase/decrease speech rate.

## Others

I’m in China - Check this option to use the English speech recognition in China.

## Pronunciation


The pronunciation starts automatically. Tap the text on the screen to listen to it again.

Pronunciation may not be available for some languages.

## Translation history

Previous translations appear in the main screen in chronological order. Swipe up or down to navigate between the translated sentences. Tap the text to playback. Tap and hold the line for about one second to delete it.

## Application menu

Tap  in the top right corner to enter the application menu.

Tap  the to return to the main screen.

## Translator

From the application menu  tap “Translator” to launch the application. ([See Chapter 2](#))

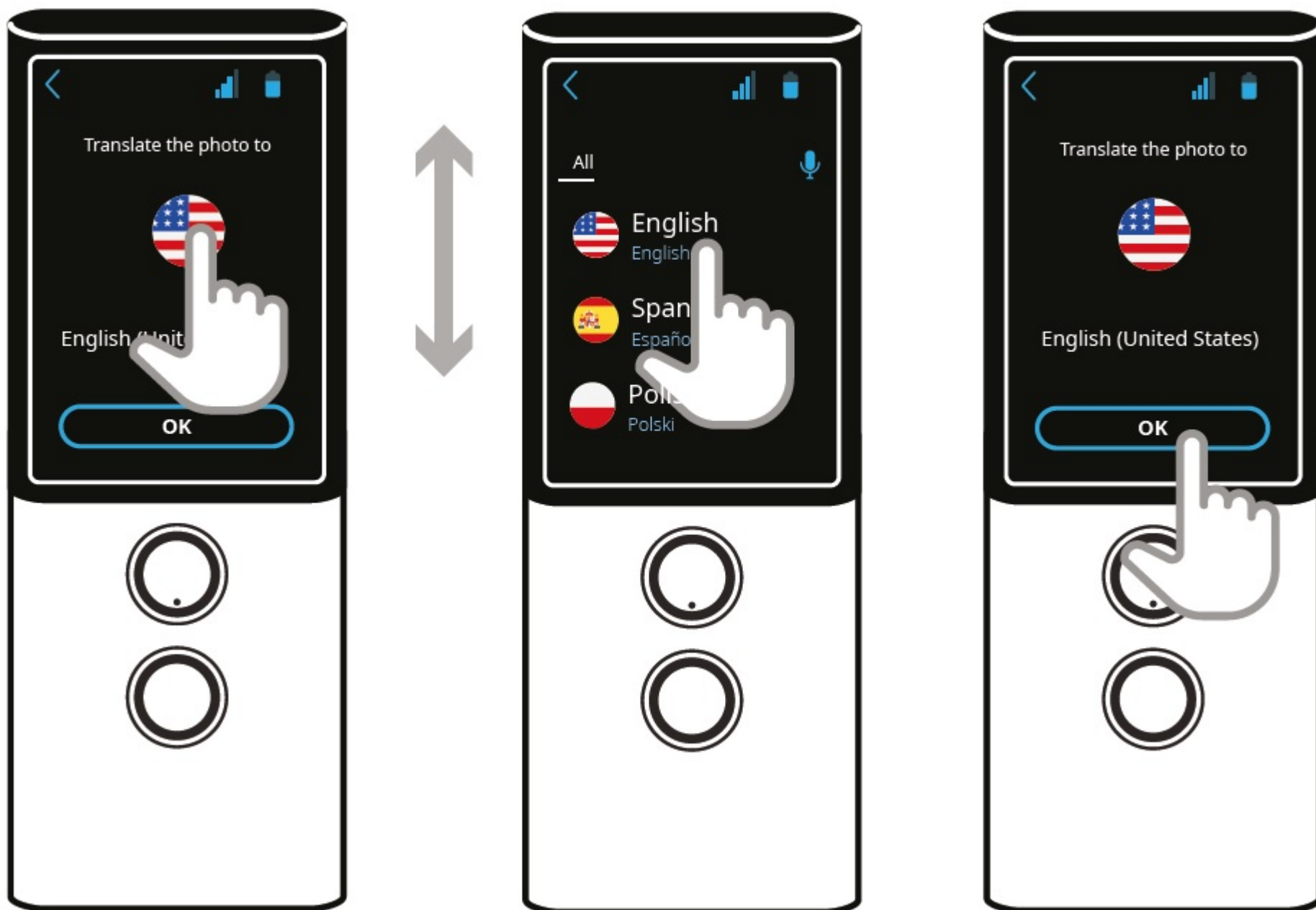
## Photo Translator

PhotoTranslator allows you to recognize text from pictures and translate it into a chosen language.

From the application menu  tap “Photo Translator” to launch the application.

Press a flag to select the language you want to translate the photo into.


Tap ok to confirm.



Point the camera at the subject.



All the text should be visible on the screen.

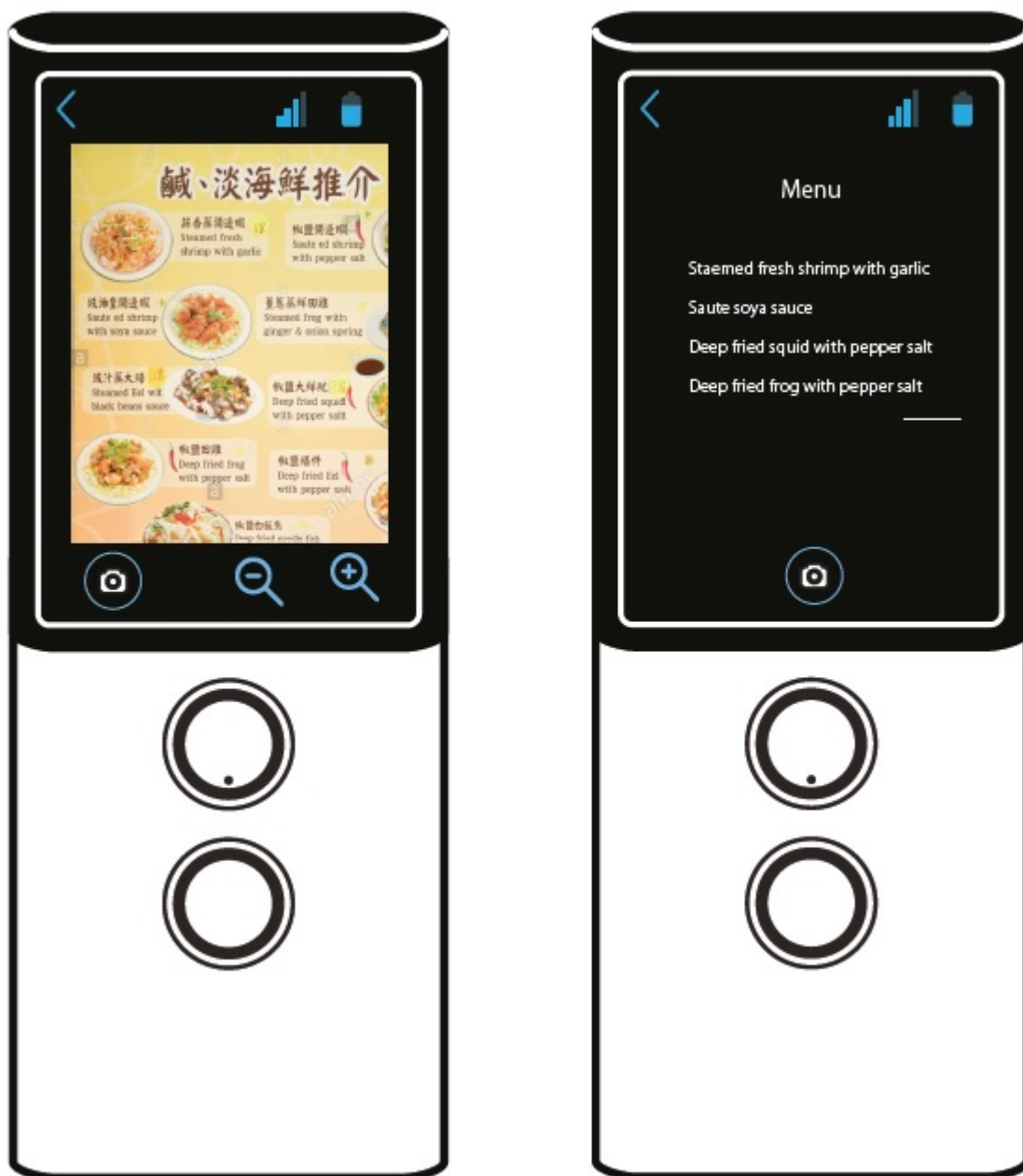
After the camera focuses automatically, touch the shutter icon .





If the photo is not sharp enough tap  to discard or tap  to confirm.


The text will be recognized after a few seconds.

Tap the screen to see the recognized text and the translation.



Press the "Back" button on the right edge of the device, below the on/off button to go back to the previous screen.

Zoom in or out by tapping   .

Tap  to take another photo.






Tap  to enter the camera settings. (Only for advanced users).

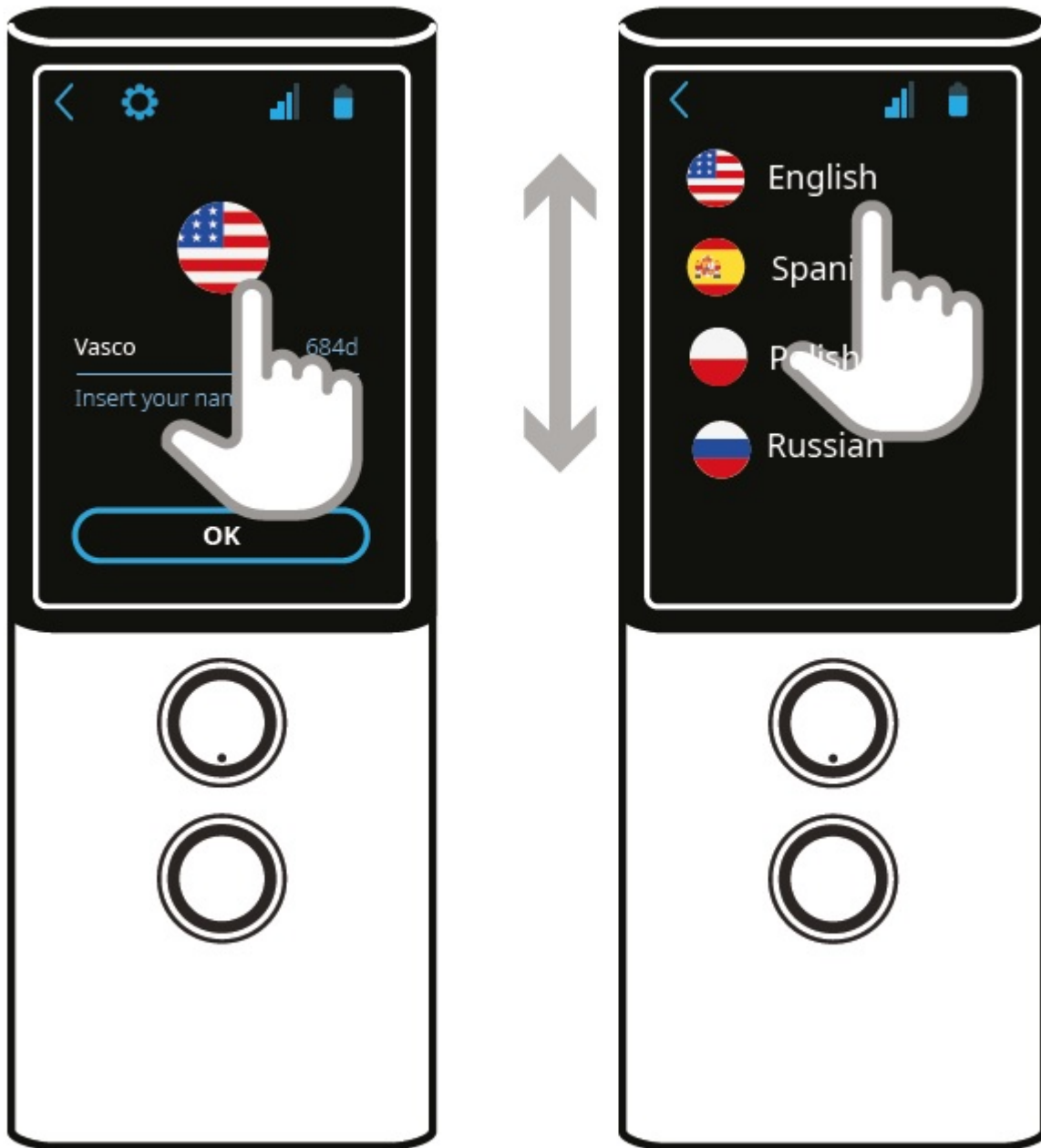
Tap  to turn the flash on/off or switch to auto flash mode.

## MultiTalk

This application allows you to translate multilingual conversations, e.g. meetings or conferences in a group of up to 100 people.

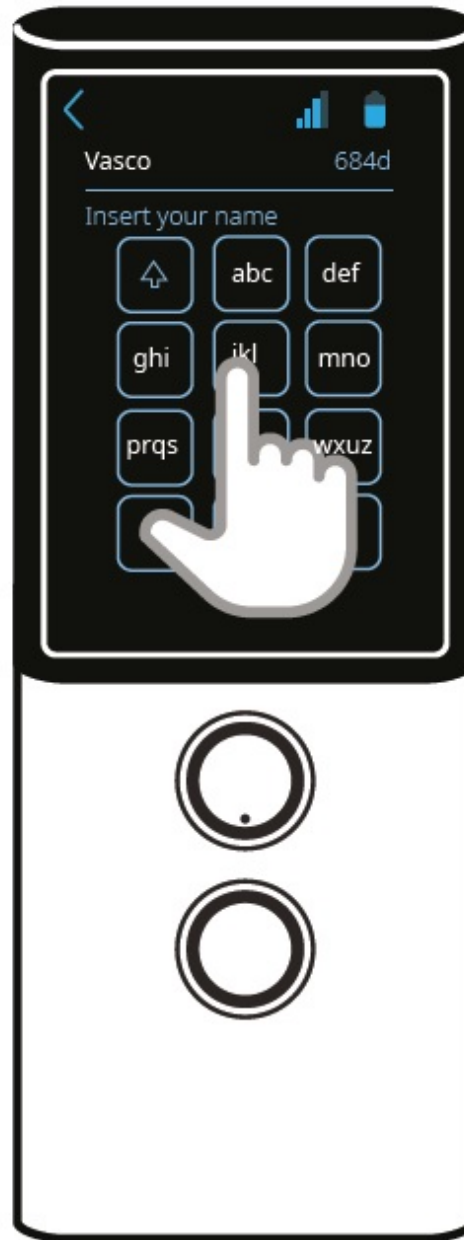
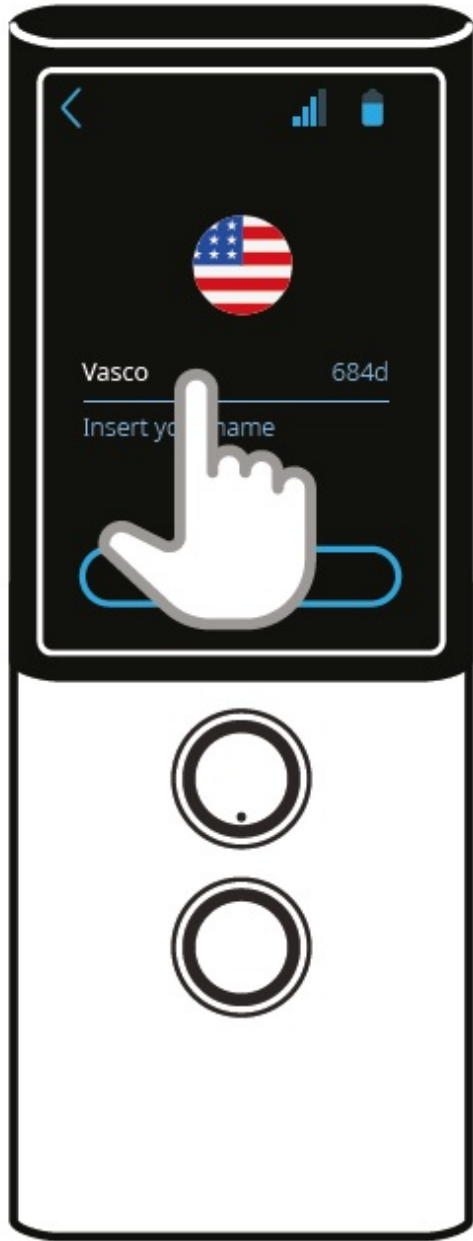
From the application menu  tap “MultiTalk” to launch the application.

### Create user profile



Tap the flag to select your language.

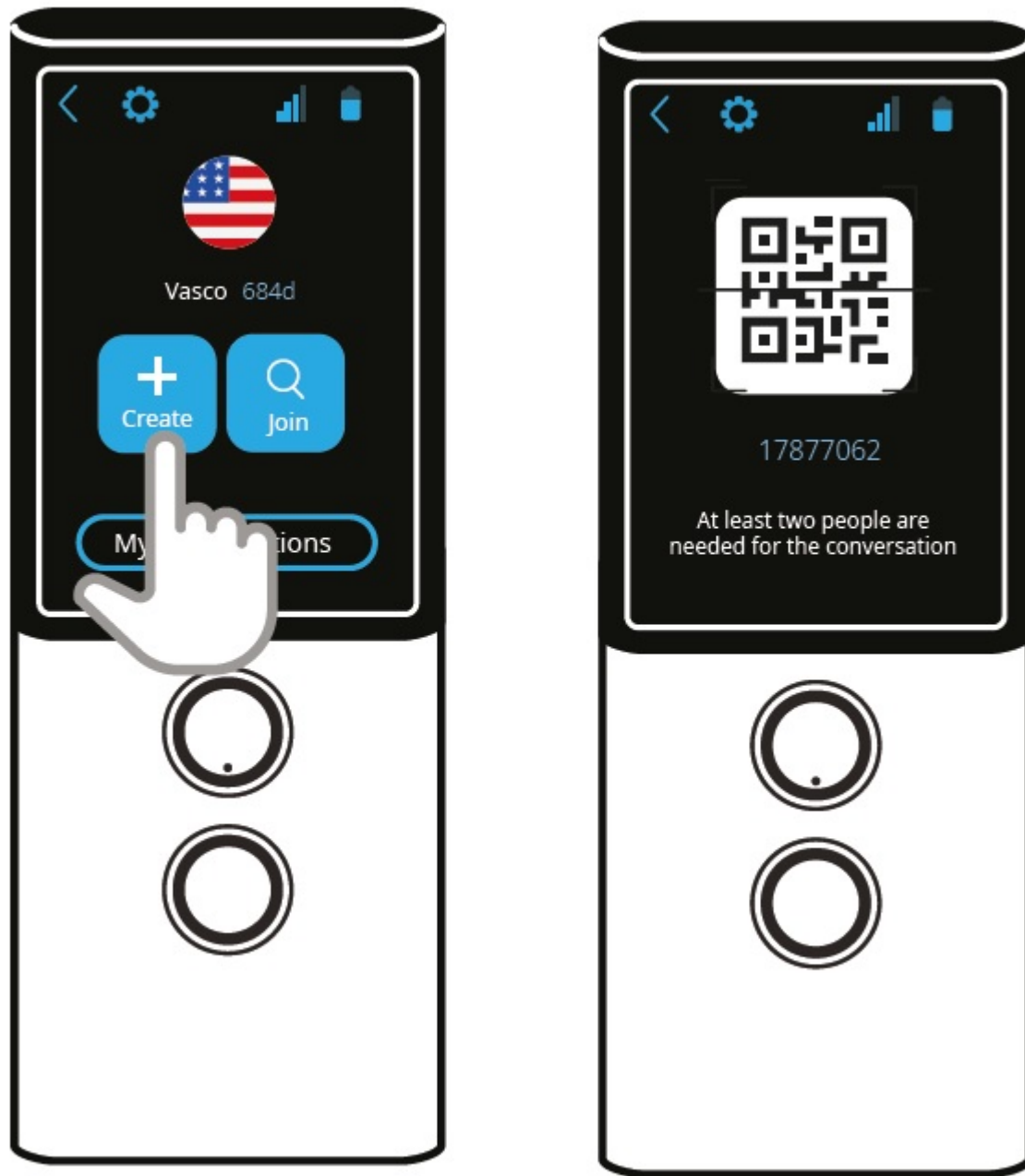
Tap the field below, enter your name and tap OK to confirm.



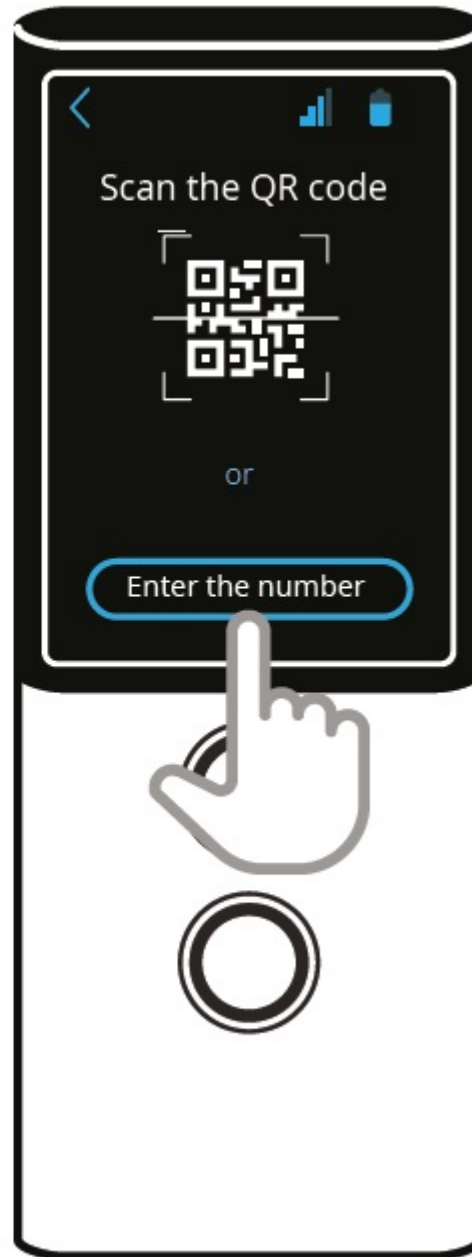
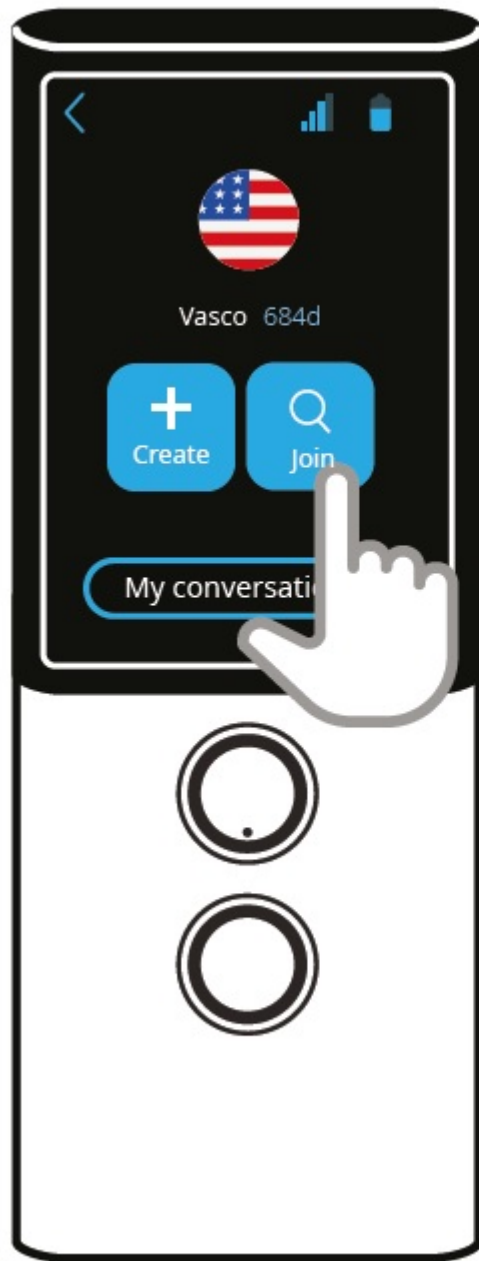


You can create your own conversation or join an existing one.

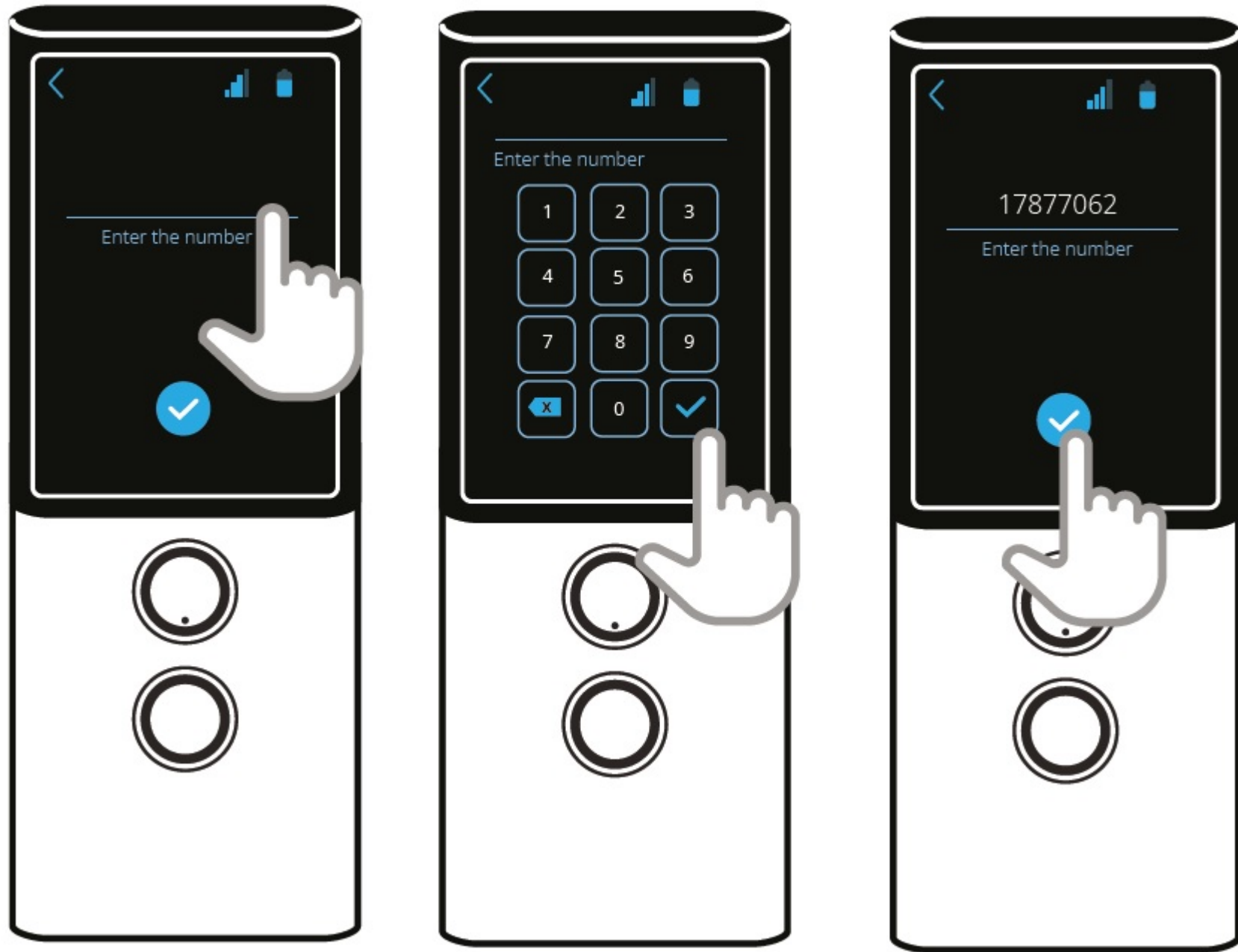
In order to create a new conversation, tap “Create” and share the QR code or its number with another user.



In order to join a conversation, tap “Join” and scan the QR code.

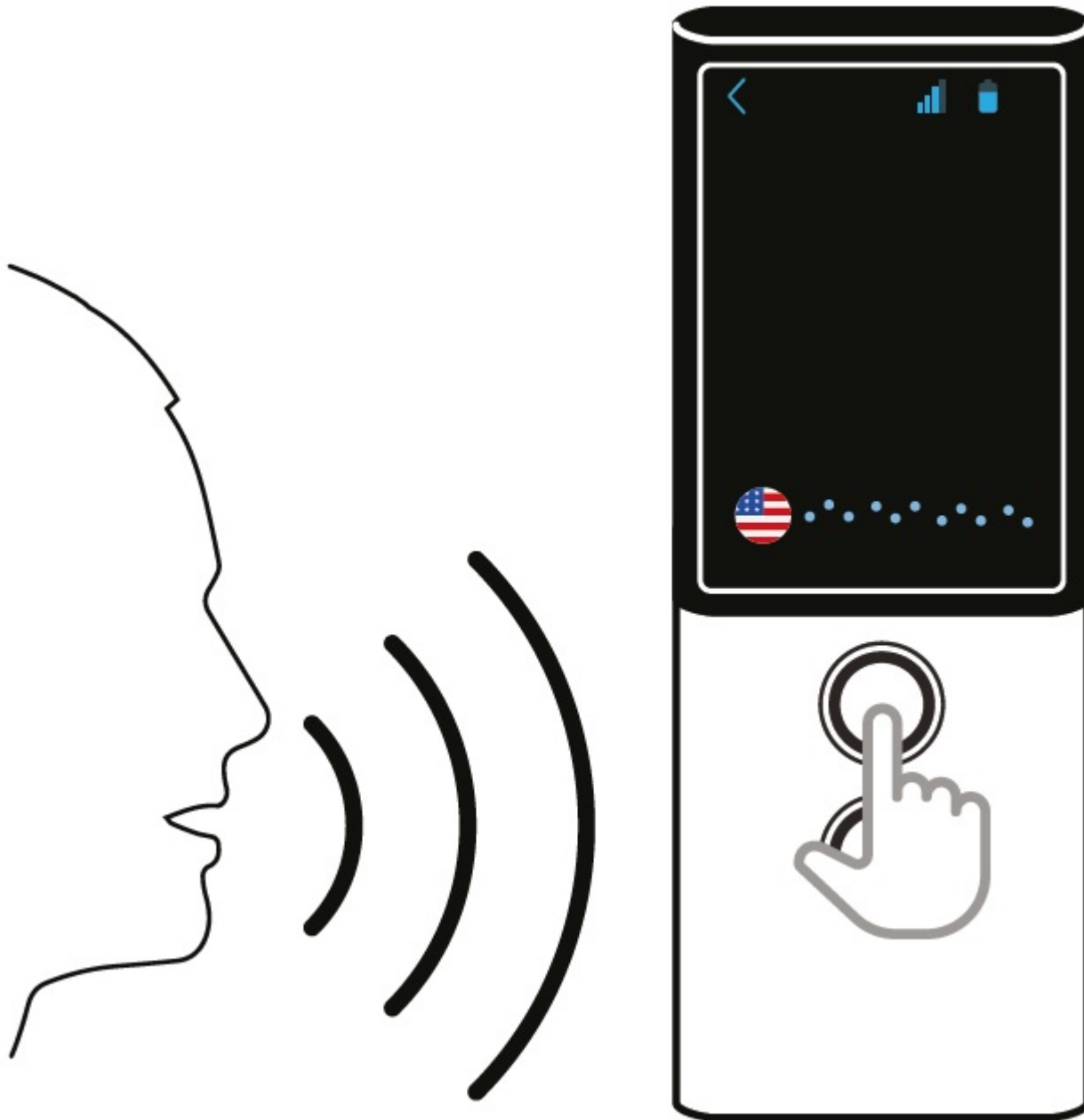


You can also join a conversation by entering its number.




Press  to confirm.

Then press and hold the "Speech Recognition" button and after the beep, say any sentence



## TranslaCall

TranslaCall is used to translate phone calls.

Tap “TranslaCall” from the application menu  to launch the application.

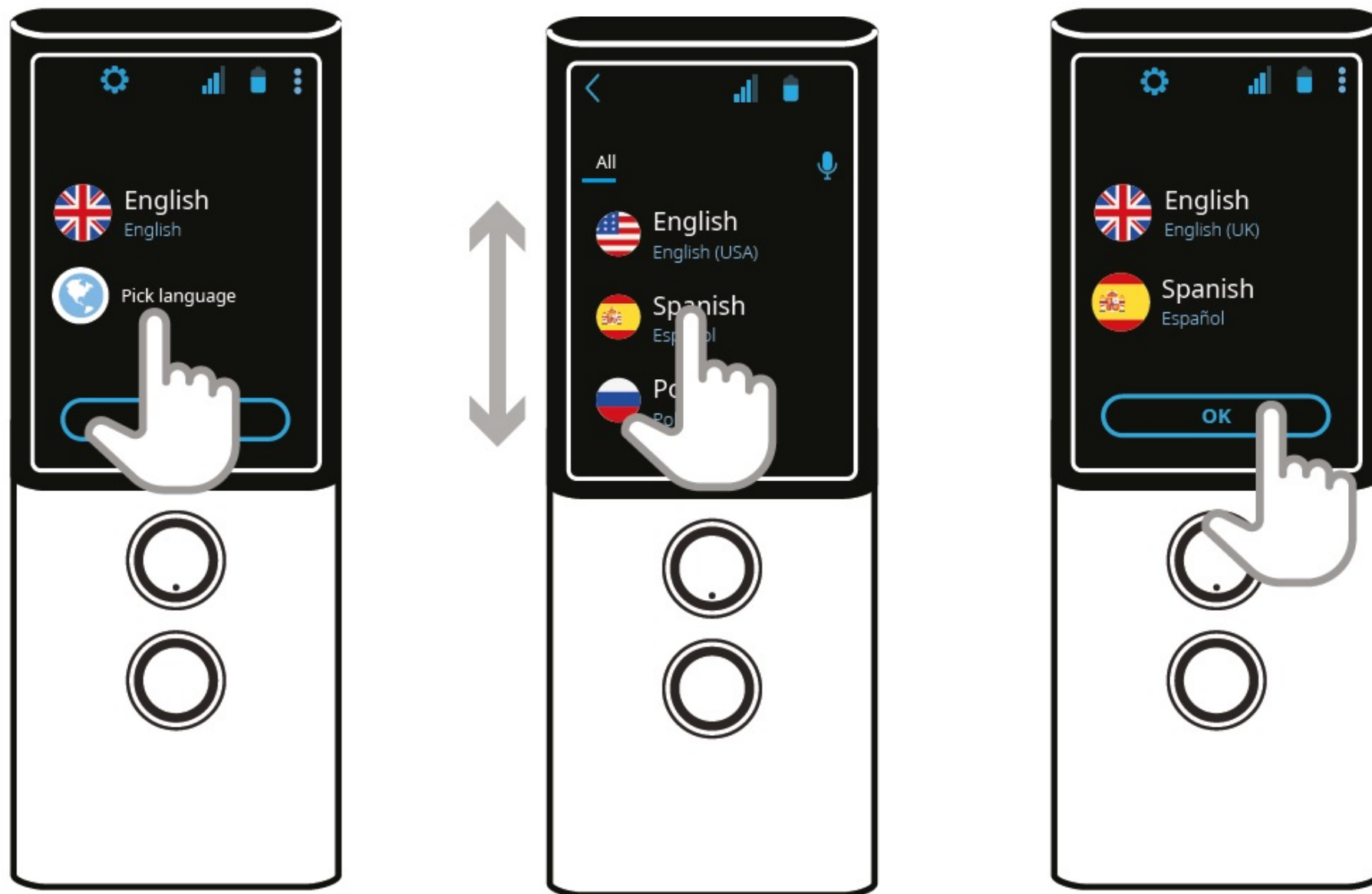
Set your language then set the language of the person at the other end of the phone and press OK.

In order to set your language tap the flag. The list of available languages is displayed.

Swipe up or down to find the language you need.

Tap the name of the language to activate it.

Follow the same steps in order to select the language of the person on the other end of the phone.

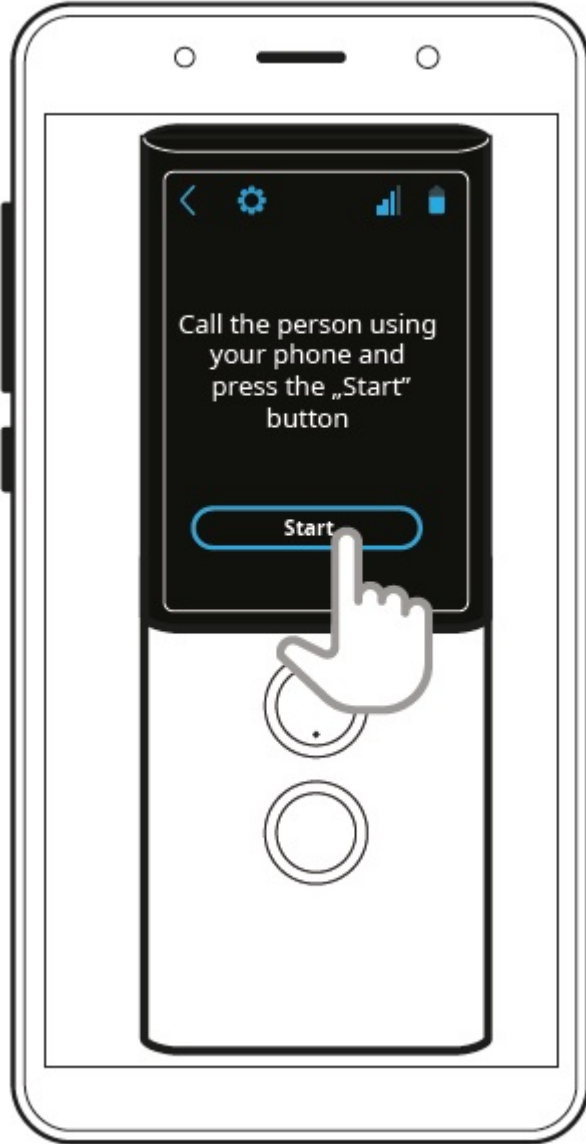


A short tutorial on how to use the application will appear on the screen.

Dial the number on your smartphone and wait for the connection.




Press "Start".



After the connection is established, turn on the loudspeaker on your phone.

Place the Vasco M3 on your phone as shown in the picture.



Press  to play the voice instruction.

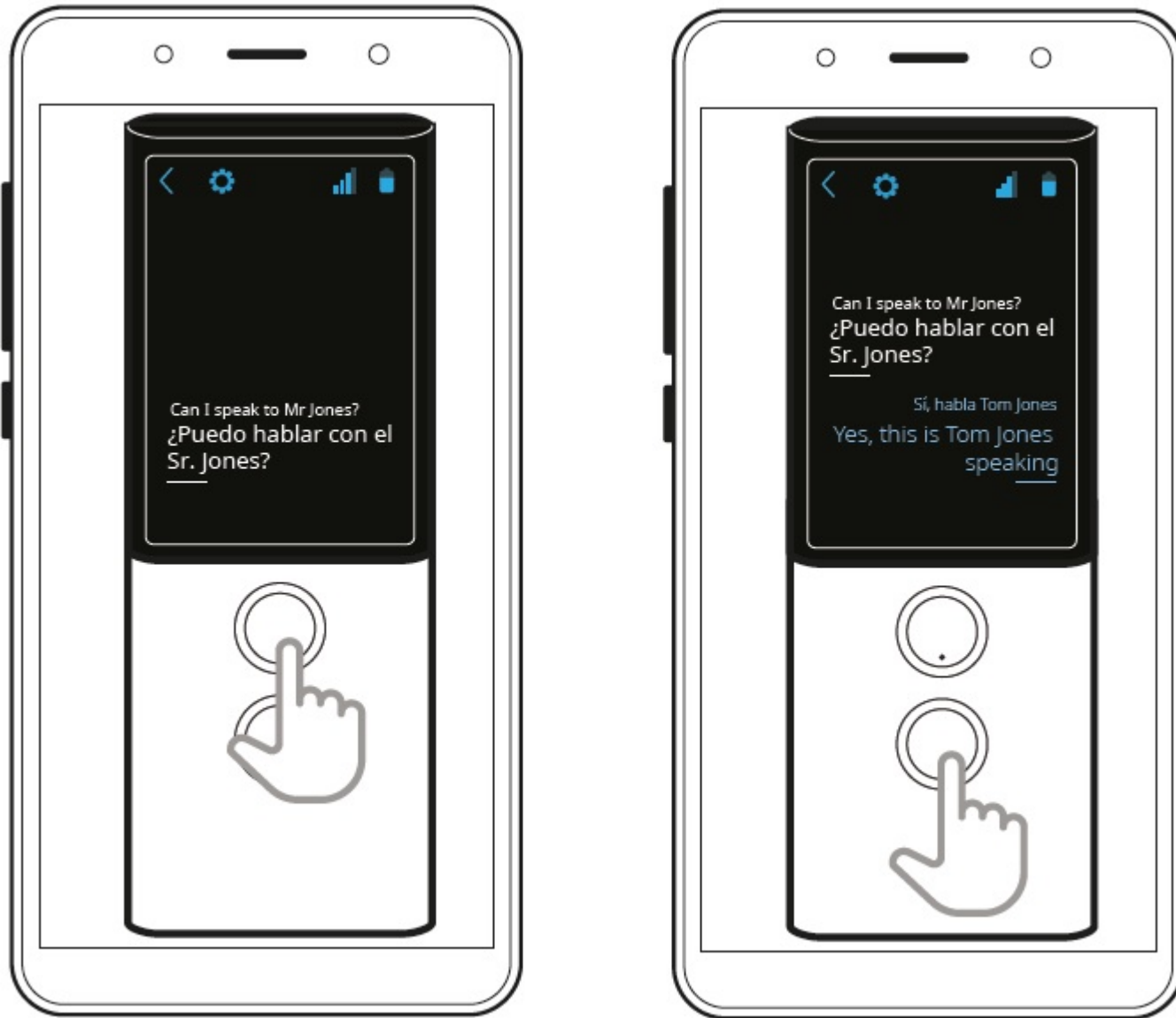
The person on the other end of the phone will hear this message:

*Hello,*

*The person who's calling you doesn't speak your language so, for your convenience, this call will be translated using Vasco Translator. By calling out your language name, you will be notified, when it's your turn to speak. Your sentences will be translated in real time.*

*Enjoy your conversation*

Press the speech recognition button that corresponds to your language and after hearing its name, start a conversation.

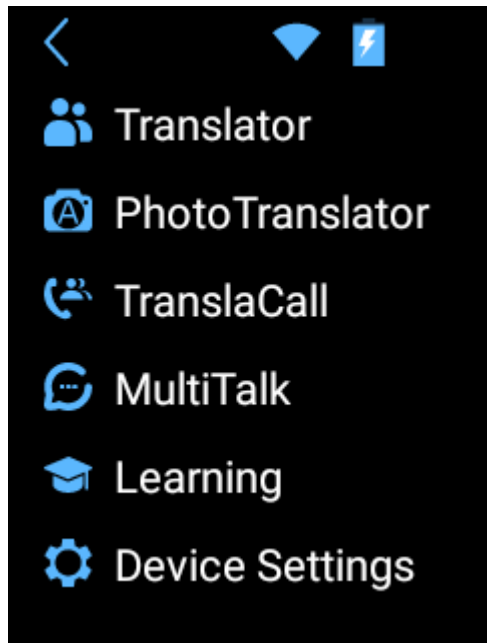


Do the same to translate the call on the other end of the phone.

## Learning

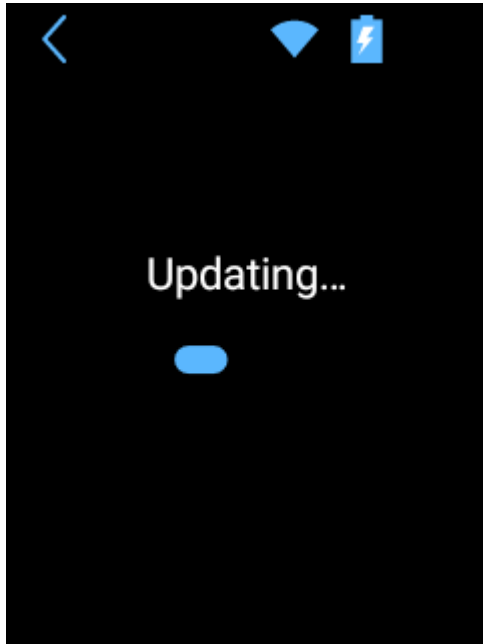
Learning - is an application that helps you memorize words and learn vocabulary.

From the application menu  tap “Learning” to launch the application.



**NOTE!** Connect to a WiFi network to update the vocabulary database.

Without a Wi-Fi connection, only basic content is available.

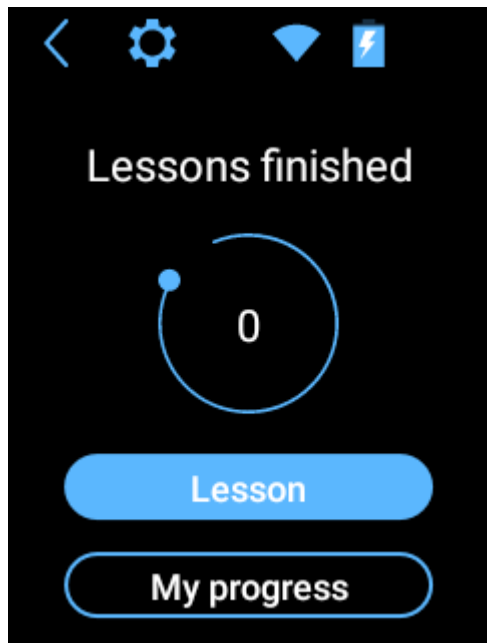


Select the language you want to learn.

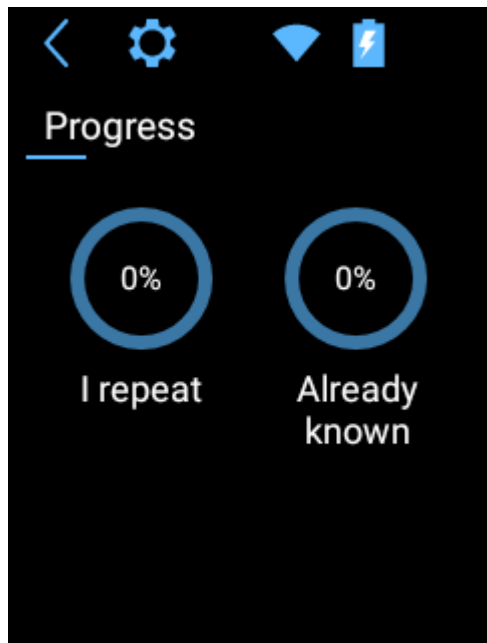
Scroll the list and tap the flag to select language.



The main screen shows the number of completed lessons.



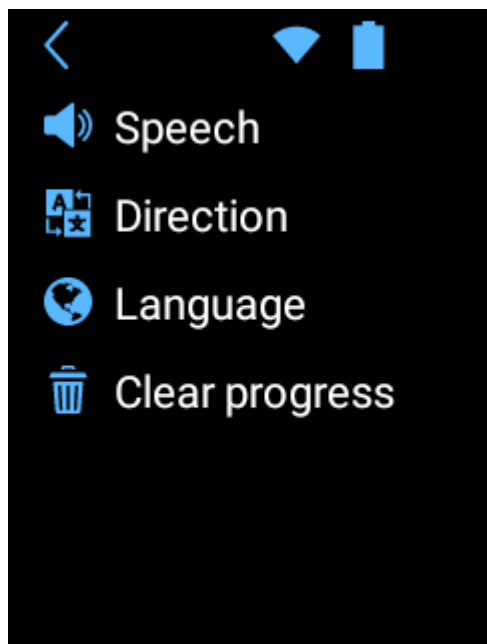
Tap My progress to display pie charts showing your progress and a list of already known words.




Tap **Lesson** to start learning.

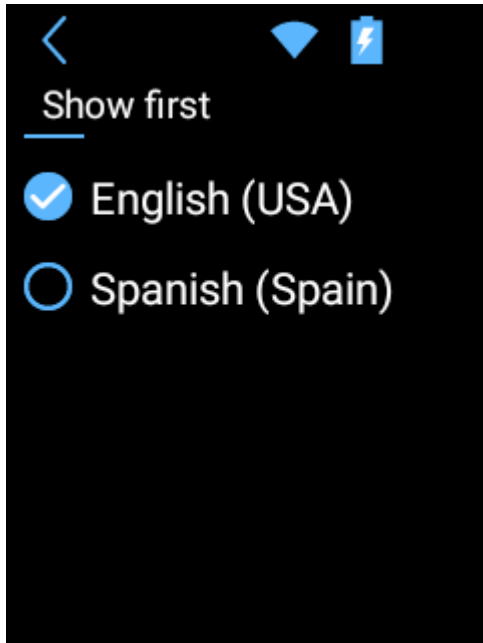
The words in your language appear first.

You can change the language order by tapping **Direction**  from the application settings .



Tap  to change the language order.



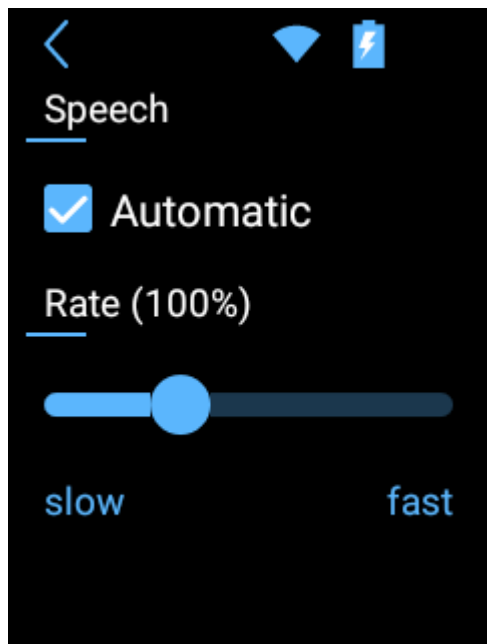


You can also change the speech rate by tapping “Speech”  from the application settings .

To disable / enable automatic pronunciation, tap .

Swipe right to speed up the pronunciation speed.

Swipe left to slow down.



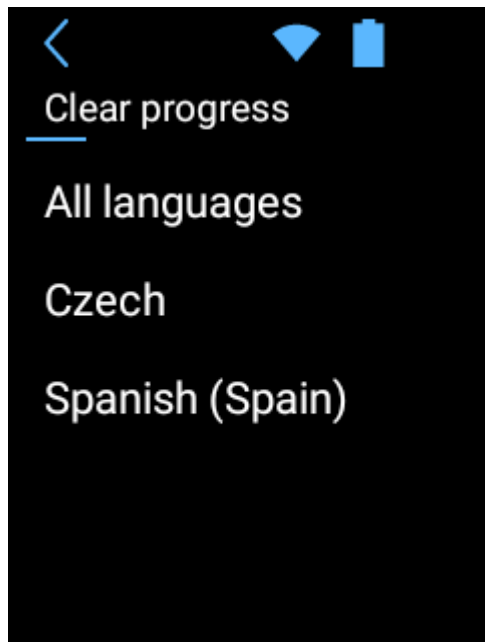
To change the language you want to learn, tap “**Language**” from the application settings .

Scroll the list and tap the flag to select the language.



Tap  “Clear progress” from the application settings  to delete learning progress.

You can clear progress for all languages or only for selected ones.

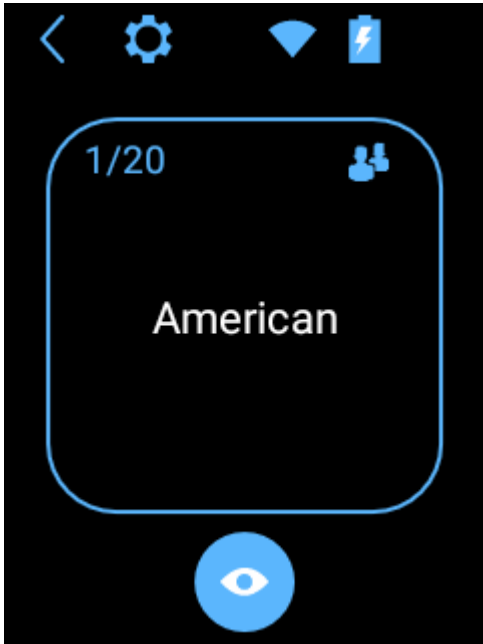



### Learning card

The upper left corner shows the total number of words in the lesson and the number of the current word.

The upper right corner of the learning shows the category icon.

The word to remember appears in the middle.




Tap  to display the word in the language you want to learn.




The device reads the word aloud automatically.

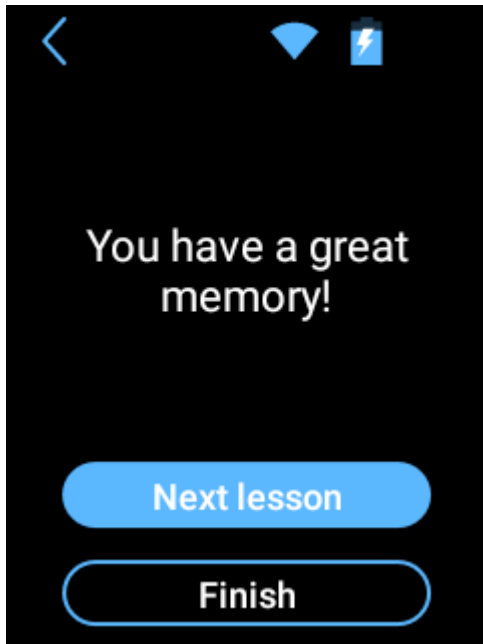
Tap the text on the screen to listen to it again.

**Note! Pronunciation may not be available for some languages.**


Tap  if you already know. This word will not appear in this lesson anymore

Tap  if you want to repeat.


When all the words are displayed, you can end the lesson or go to the next one.



You can now start a new lesson or stop learning.

Tap  to exit the application.

## Device settings


From the application menu  tap “Device Settings” to set up your WiFi connection, configure your SIM card, check for updates or change the application language, etc.

## WiFi configuration

Manage your WiFi networks here.

If you see “WiFi is disabled”, tap the  button. You will see the list of available networks.

Tap the name of the network to connect to it.

**Padlock**  – this icon means that the network is secured with a password.

If you have the password, tap the name of the network and enter the password. Then, tap “OK” and use the device. If you don’t know the password, contact the network provider.


**Signal**  – the green bars show the signal strength.

**Name** – tap the name of the network to connect to it.

**WARNING:** A network without a padlock means that this network is open. You don’t need any password to connect to it. Please note, that some open networks require additional actions to be taken such as logging in or accepting terms and conditions. It’s not possible to use this type of network with Vasco Translator M3.

## SIM configuration (only for advanced users)

**This menu is visible only for devices with a non-factory SIM card.**

- Mobile data - You can configure data roaming, preferred networks etc.
- Data roaming - allows you to connect to data services (It is strongly recommended to leave this option ON while using GSM).
- Preferred networks - This option allows you to select an operator manually.
- Preferred network type - This option allows you to set preferred network type.
- Enhanced 4G LTE Mode - Tap  to toggle this setting on or off
- Access Point Names - This option allows you to change APN Names.
- Network operators - This option allows you to choose network operators manually.
- APN Settings - allows you to change APN settings.

## Application language





Change the language for device menus.

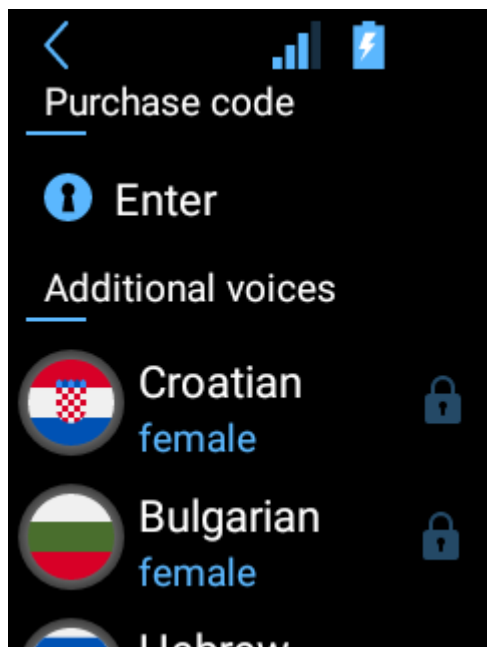
## Additional voices

This option lets you download and install extra voices for chosen languages (Bulgarian, Croatian and Hebrew).

Not all languages supported by your Vasco device come with pre-installed voices. If you bought an extra voice at the time of purchase of your Vasco Translator, you do not need to take any additional action. The voice will be pre-installed on your device before we ship it, and your translations will be read out loud automatically.

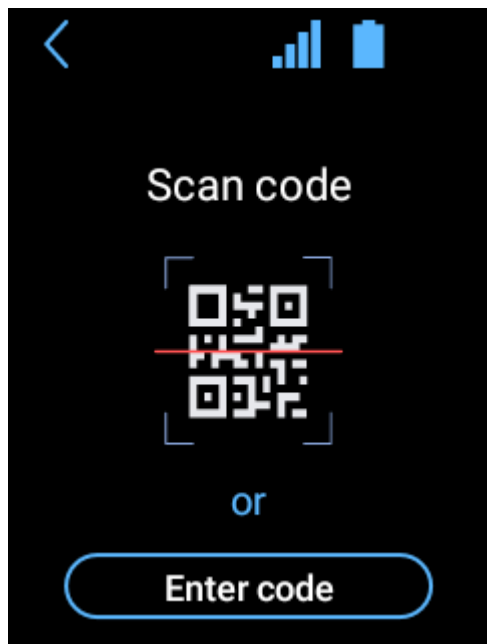
If you already have a Vasco Translator and wish to purchase an additional voice, visit the Vasco Electronics web store and add a chosen voice to the cart. After your payment has been processed, you will receive an email with an activation code and installation instructions.


To download and install the additional voice, go from the main menu  to device settings , choose “Additional voices” , and then press “Enter” .

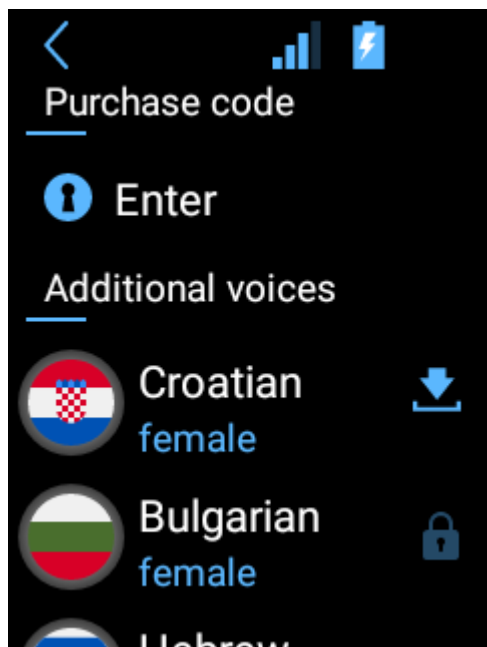


To enter the code using the camera, press “Scan code”.


To enter the code manually using the keyboard, press “Enter code”.




If you entered the code correctly, the voice will be activated and you will be able to download it. A voice that has been activated, but has not been downloaded yet, is marked with this symbol: .







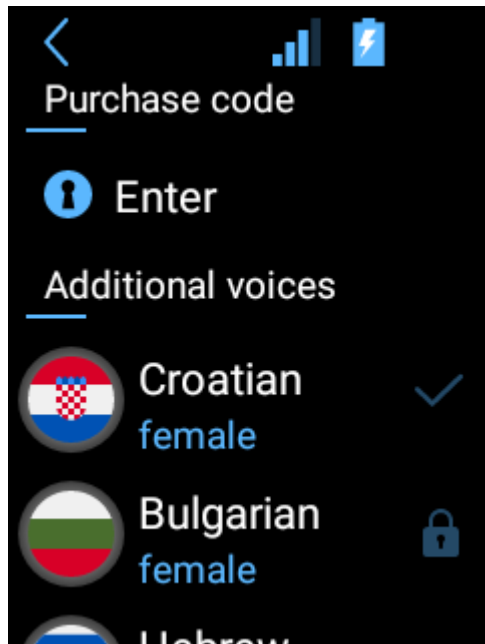
You need a Wi-Fi connection to download the voice. Press , to start downloading.

It can take around 15-20 minutes to download the extra voice, depending on the speed of your internet connection. You can still use your device during the downloading process, but you should not switch it off.

The icon  next to a language name indicates that the voice has been installed.

The icon  indicates that the downloading process has been interrupted. Check your Wi-Fi connection. The download will resume automatically after the connection has been established again.

Additional voices which are available in the web store, but have not been purchased yet, are marked with the padlock symbol:  .



### Check for updates

If a new version of the software is available, you will see information about it after tapping “Check for updates”. In order to update the device, download and install the application, tap “OK” and reboot the device. If there are no new updates you will see “No new updates”. If you see “Device not registered”, please contact the seller.

Tap “Details”

A WiFi connection is needed in order to download system updates.

## About device

You can see the version of the device and read the terms and conditions.

## Application settings

Within applications (Translator, Photo translator, TranslaCall, MultiTalk), tap  to enter application settings.

The number of options depends on the selected application.

### Share (in Translator history; TranslaCall history)

This option allows you to share your translations with other people.

- Selected conversations - Swipe Up and Down to navigate between the translated sentences. Select the translation. (You can pick more than one sentence). Tap “Share” and provide the email address. Tap “Send”. The translations will be saved as a PDF file and sent to the email address entered.
- Whole history - Tap this option and provide the email address if you want to share the whole translation history.

### History (Translator; TranslaCall)

- Save history - Check this option if you want the device to remember the translations history,
- Delete history - Tap this option if you want to delete all history entries.

### Speech (Translator; TranslaCall)

- Automatic - This option allows you to hear the translated text right after the translation.
- Speech rate - This option allows you to increase or decrease the speed of pronunciation. Swipe left to decrease or right to increase the speed.

## About application


Information about the software.


### Others (Translator)

- I’m in China - This option allows you to use English voice recognition in China.

## Status bar

Tap  to enter the current application settings.

Tap  to get back to the previous screen.

Tap  to enter the application menu.

### Battery status


Icon  shows current battery status.

Charging 

### WiFi


 Icon shows the strength of the WiFi signal.

 Icon means that the WiFi module is turned off.

 Icon means that WiFi is available and you're within its range, but the device is not connected.

### GSM

 Icon shows the strength of the GSM signal.

 Icon means that the SIM card is damaged or not installed.

### DATA

 Icon means that mobile data is disabled.

## Status bar panel

Swipe the screen down to display the status bar panel.



GSM



Icon shows the strength of the GSM signal.

### Battery status



Icon shows the current battery status.

### WiFi



Tap to enter the WiFi settings.



Tap to turn on/off the flashlight.

Swipe the screen up to hide the status bar panel.

## Specification

Display	240*320 QVGA 2.0" IPS
Processor	MT6737V/WM Quad-core CA53 1.1GHz
RAM	1 GB
ROM	16 GB
3G/4G Modem	Yes
Wi-Fi	Yes
Battery	1700 mAh
Size	49 x 125 x 13mm (1.9 x 4.9 x 0.5in)
Weight	88g (0.19lb)
Earphone output	Mini Jack

USB

Type-C