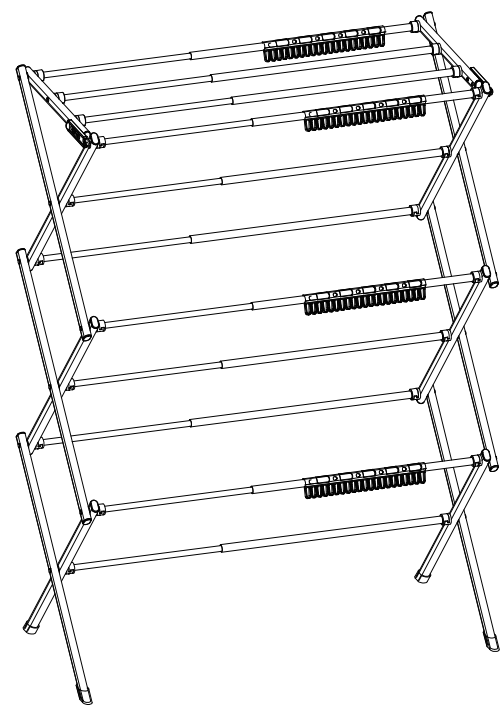


Jophaiipy

FOLDABLE TOWEL RACK



Please scan the code to watch the assembly video

DEAR CUSTOMER

Thank you for buying our company's products. Please read the instructions in this manual carefully and make sure the correct assembly is made in accordance with the component description.

Before Assembly

Please do not assemble in an uneven place to avoid contact with the edge of the pipeline to prevent scraping injury.
Check the availability of all components.
Follow the assembly instructions to ensure the correct assembly.
Put on gloves to protect your hand.

During Assembly

Make sure that the tube is completely assembled.
Please do not assemble in the tilt place

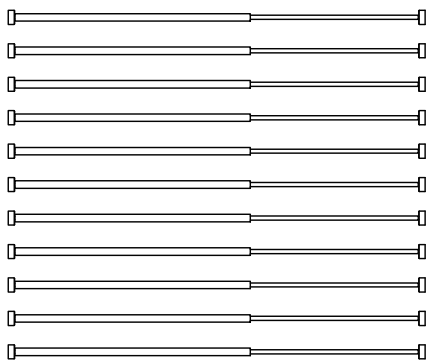
After Assembly

When using, please pay attention to keep the drying rack balanced
Don't use the drying rack at high temperature

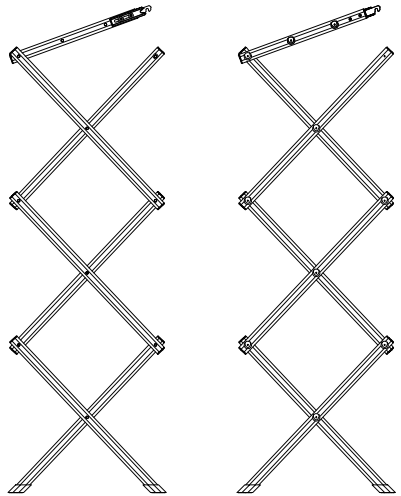
Maintenance

Clean the drying rack with soft sponges and water once a month.
Light -colored stains can be erased with dry fabrics, and stubborn stains can be erased with medium size. Acid or bleach may cause corrosion, make sure they do not contact the pipe.
The materials of our products are stainless steel pipes. The walls of the tube are thick and it is not easy to wear

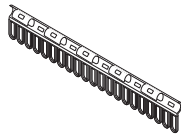
Easy Installation



① 11 × Pipes



② 2 × standing rack

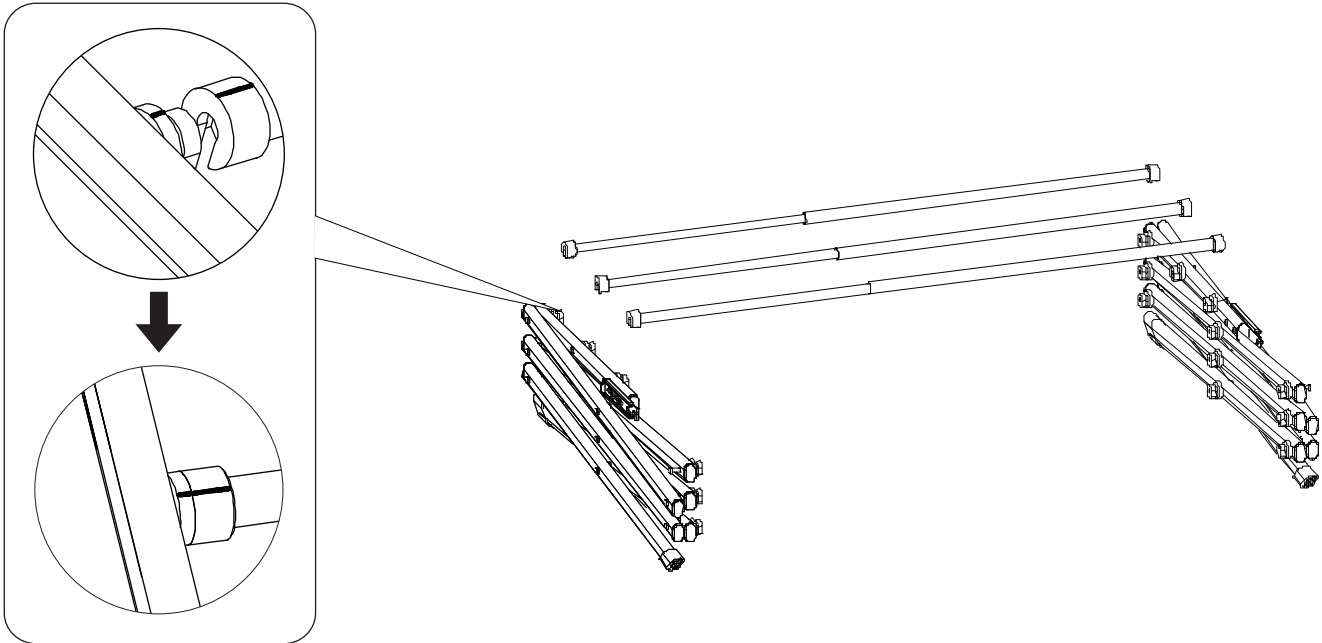


③ 4 × Clips

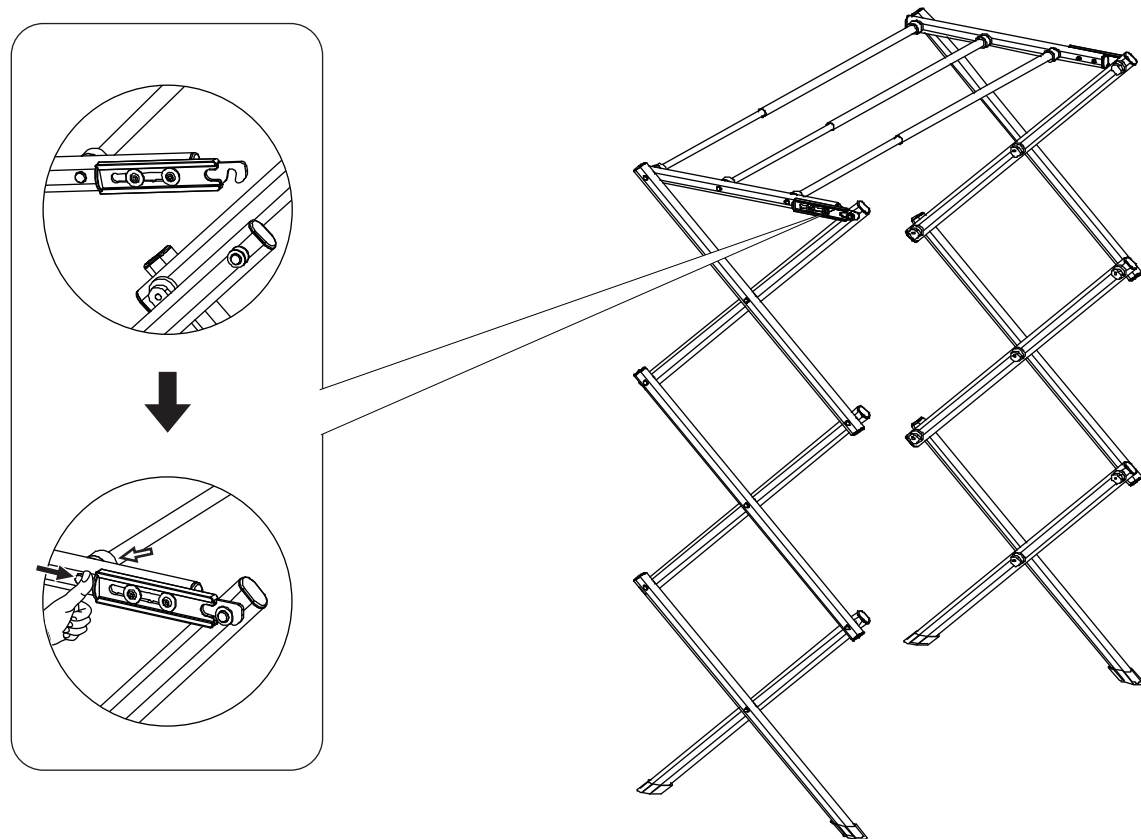
Please pay attention to the direction of the pipe.

1

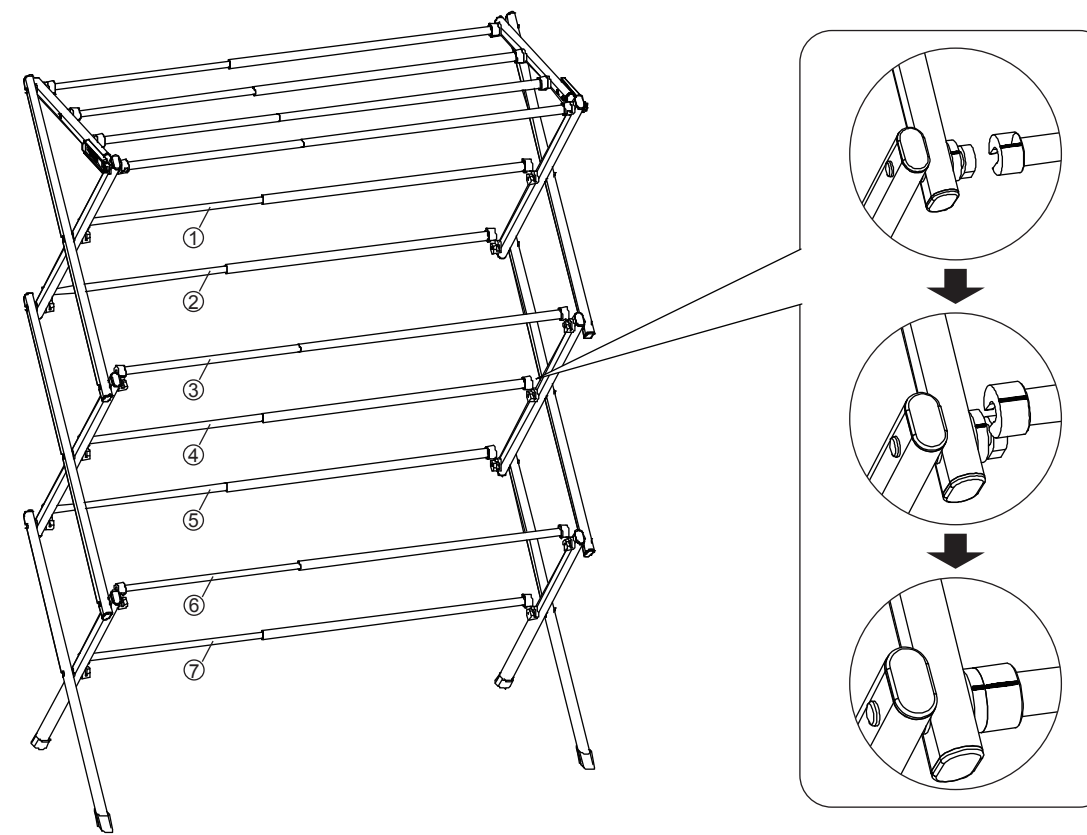
When installing, there is a line on the black knob assembly at one end of the tube (as shown in the picture), you need to align this line when buckling the tube into the groove, and apply vertical force to the inside, then you can easily put the The tube snaps into the groove.
In this way, the installation process can be labor-saving and damage to components can also be avoided.



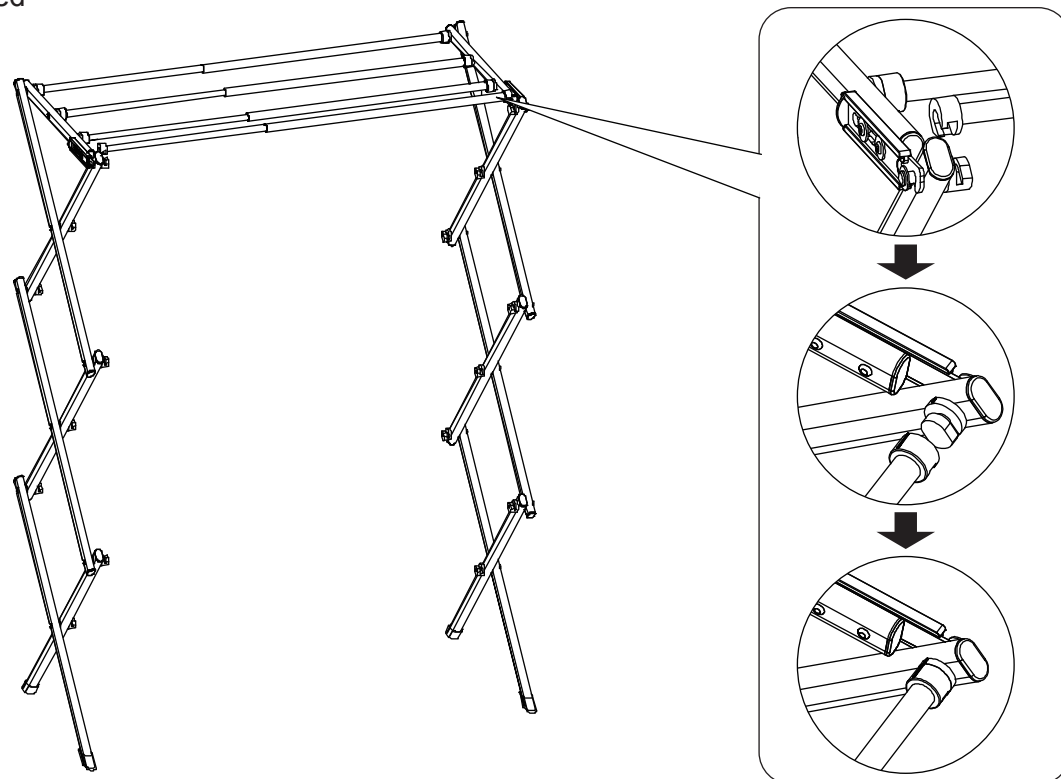
2 As shown in the figure, install the top tube on the bracket, and then press the button to lock.



4 Other 7 pipes can be installed in same way, there is a line on the black knob assembly at one end of the tube (as shown in the picture), you need to align this line when buckling the tube into the groove, and apply 45° force pressing into the groove, and apply 45° force pressing in the inside to easily put the The tube snaps into the groove



3 When installing, there is a line on the black knob assembly at one end of the tube (as shown in the picture), you need to align this line when buckling the tube into the groove, and apply 45° force pressing in the inside to easily put the The tube snaps into the groove. In this way, the installation process can be labor-saving and damage to components can also be avoided



5 Finished

